

SKETCH SHOWING ACCESSORY BUILDING AREA ON PROPOSED SEVERED LANDS

2015 Sarsfield Road, Sarsfield (ON)  
(Geographic Township of Cumberland)  
CITY OF OTTAWA

Surveyed by Annis, O'Sullivan, Vollebekk Ltd.

Scale 1 : 1000



Metric

DISTANCES SHOWN ON THIS PLAN ARE IN METRES AND CAN BE CONVERTED TO FEET BY DIVIDING BY 0.3048

Geographic Index

Part of Gore Lot  
and Part of Lot 10  
Concession 2 (Old Survey)  
(Geographic Township of Cumberland)  
City of Ottawa

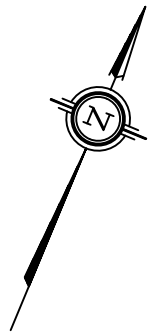
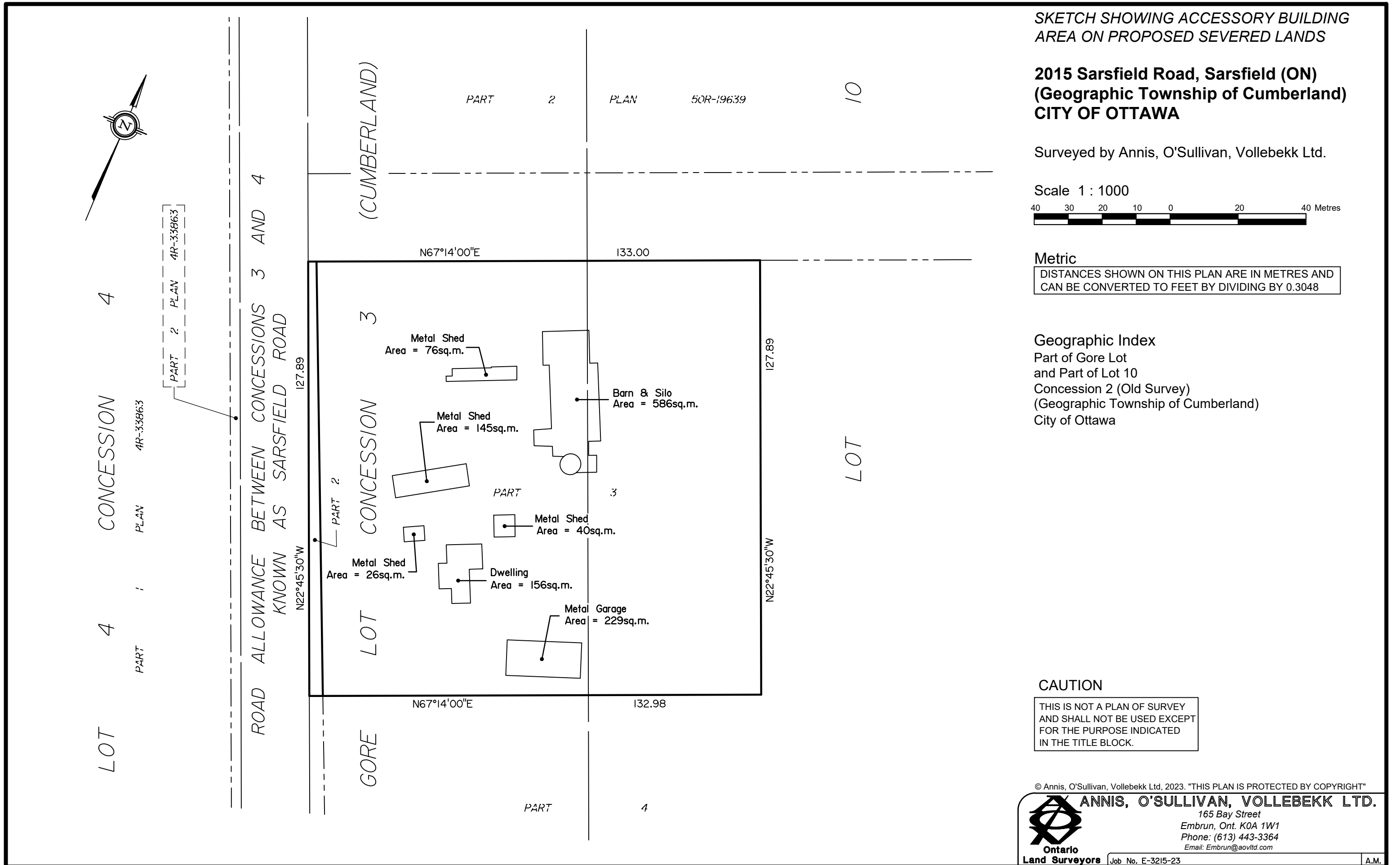
CAUTION

THIS IS NOT A PLAN OF SURVEY AND SHALL NOT BE USED EXCEPT FOR THE PURPOSE INDICATED IN THE TITLE BLOCK.

© Annis, O'Sullivan, Vollebekk Ltd, 2023. "THIS PLAN IS PROTECTED BY COPYRIGHT"

**ANNIS, O'SULLIVAN, VOLLEBEKK LTD.**  
165 Bay Street  
Embrun, Ont. K0A 1W1  
Phone: (613) 443-3364  
Email: Embrun@aovltd.com

Ontario  
Land Surveyors Job No. E-3215-23



LOT 4  
CONCESSION 4  
PART 2  
PLAN 4R-33863

PART 2 PLAN 4R-33863

ROAD ALLOWANCE BETWEEN CONCESSIONS 3 AND 4  
KNOWN AS SARSFIELD ROAD

(CUMBERLAND)

CONCESSION 3

GORE

PART 2 PLAN 50R-19639

N67°14'00"E 133.00

N22°45'30"W 127.89

N22°45'30"W 127.89

N67°14'00"E 132.98

PART 4

10

LOT