

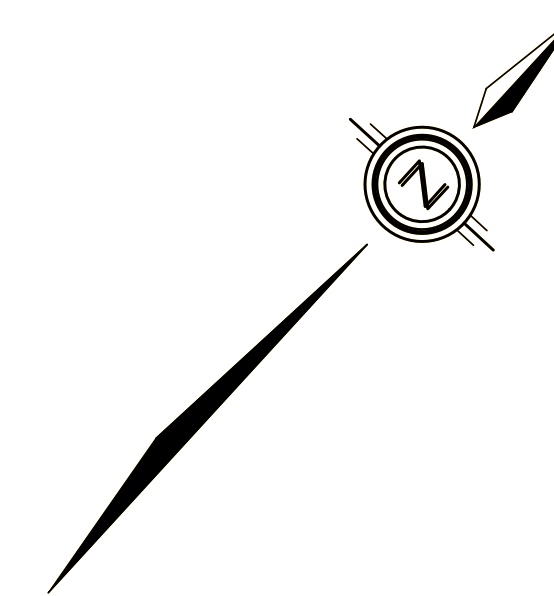
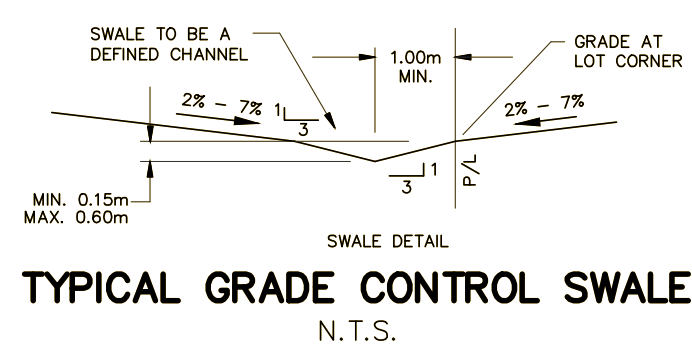
**NOTE:**  
A GEOTECHNICAL ENGINEER LICENSED IN THE PROVINCE OF ONTARIO IS TO INSPECT ALL SUBGRADE SURFACES FOR FOOTING AND PAVEMENT STRUCTURES PRIOR TO CONSTRUCTION

**NOTE:**  
ALL EXISTING POST & WIRE FENCE, CULVERTS, UTILITY WIRE / POLES, TREES, SHRUBS ETC. WITHIN LOTS, BLOCKS AND ROADS TO BE REMOVED, UNLESS OTHERWISE NOTED

**NOTE:** PERFORATED PIPE  
PERFORATED PIPE IS REQUIRED FOR SWALE SLOPE LESS THAN 1.5%. REFER TO CITY STD. S29, S30 FOR REAR YARD TRENCH AND PIPE DETAIL ONLY

**NOTE:**  
ALL SWALES SHALL BE 0.15m DEEP WITH 3:1 SIDE SLOPES UNLESS OTHERWISE INDICATED

**NOTE:**  
FOR CROSS SECTIONS REFER TO DRAWING No. 86 AND 87.



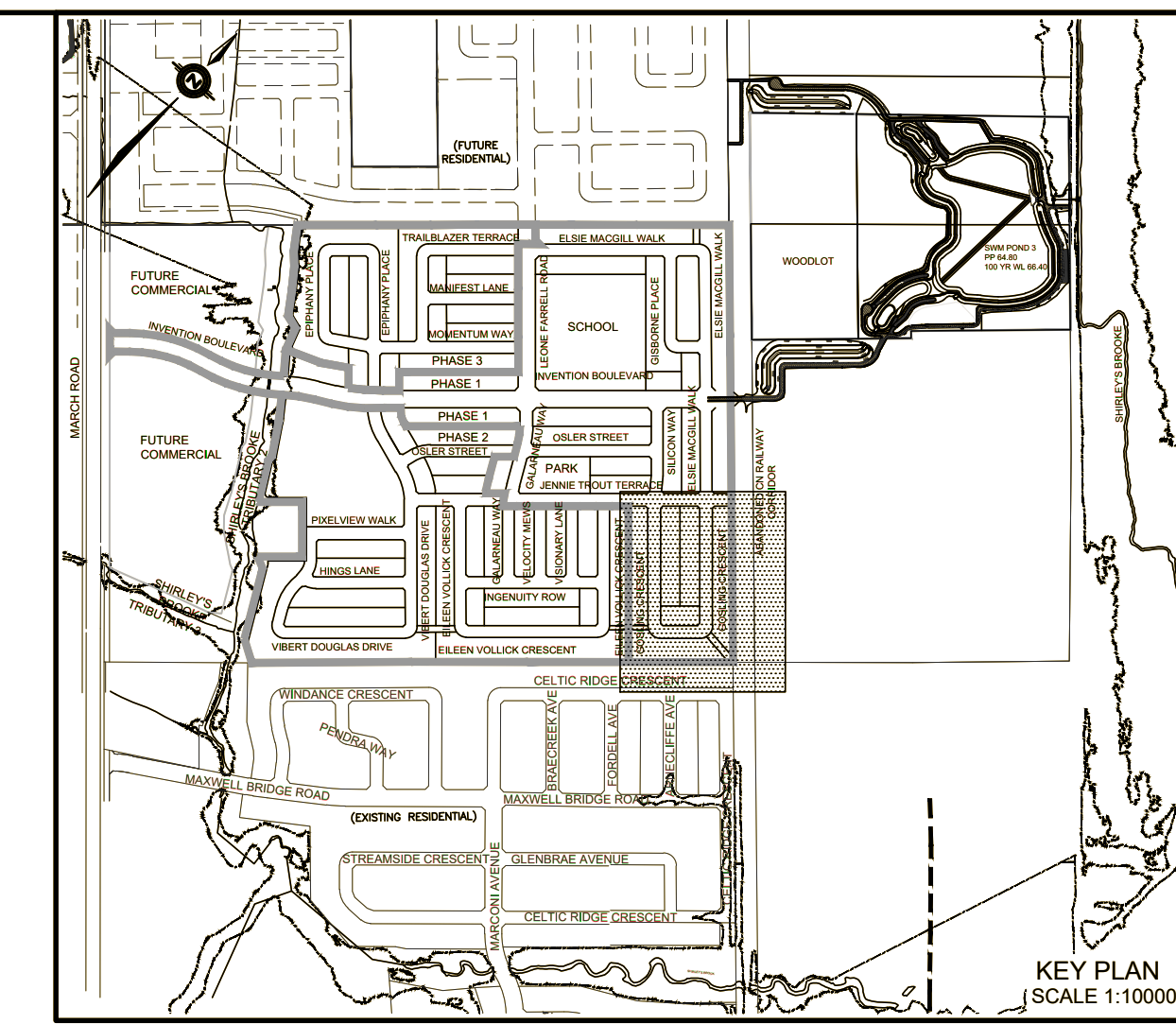
ANY DISTURBED AREA DURING CONSTRUCTION TO BE RESTORED TO THE ORIGINAL CONDITION OR BETTER TO THE SATISFACTION OF THE AUTHORITIES HAVING JURISDICTION

CONTRACTOR TO VERIFY THE PRECISE LOCATIONS AND INVERT ELEVATIONS OF EX. UNDERGROUND SERVICES AND EX. UTILITIES PRIOR TO STARTING CONSTRUCTION

PERMISSION REQUIRED FOR WORK ON ADJACENT LANDS

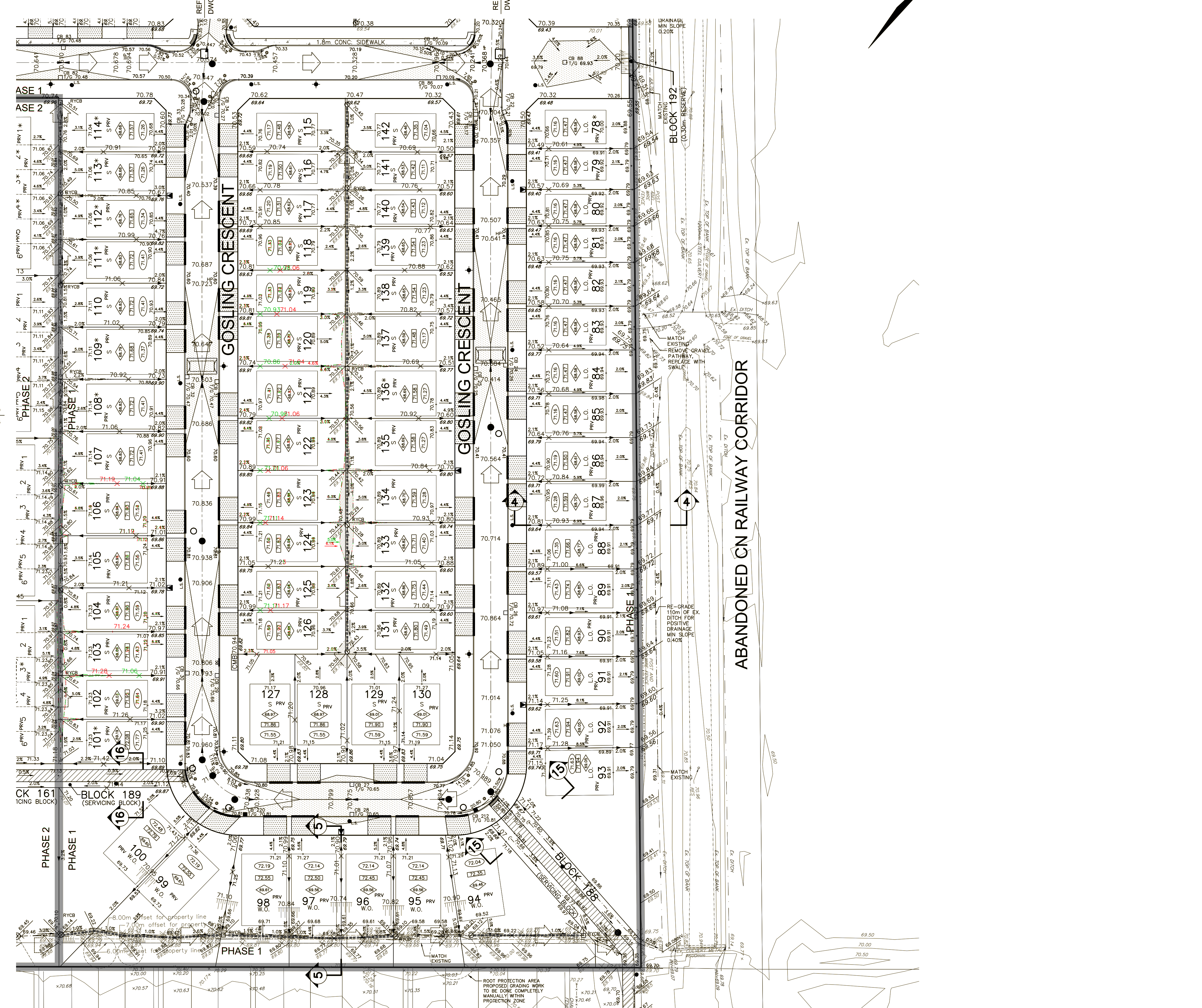
FOR LOTS REQUIRING AMENDED TOPSOIL REFER TO PATERSON GROUP MEMO P0454-MEMO-20 DATED AUGUST 9, 2022

REFER TO DWG No. 65



**LEGEND**

PROPOSED ELEVATION	103.45	OVERLAND FLOW DIRECTION	→
EXISTING ELEVATION	102.73	EXTERNAL OVERLAND FLOW DIRECTION	→
FUTURE ELEVATION	[93.000]	EMERGENCY OVERLAND FLOW DIRECTION	→
PROPOSED SWALE GRADE	1.5%	RETAINING WALL AND ELEVATIONS	T/W=103.10 B/W=102.44
HIGH POINT	102.16	CHAINLINK FENCE (1.5m UNLESS OTHERWISE NOTED)	—
STREET CATCHBASIN		VALVE & VB	—
STREET CATCHBASIN WITH CLOSED LID		VALVE & VC	—
CATCHBASIN MANHOLE		BUILDING ENVELOPE	—
TEE CATCHBASIN		TOP OF FOUNDATION (TOF)	—
ELBOW CATCHBASIN		FINISHED FLOOR ELEVATION (FFE)	—
HYDRANT, VALVE & VB		UNDERSIDE OF FOOTING ELEVATION (UST)	—
VALVE & VC		UNITS REQUIRING WATER PRESSURE REDUCING VALVES	PRV
NOISE BARRIER (3.0m UNLESS OTHERWISE NOTED)		WALKOUT UNITS	W.O.
DECORATIVE FENCE (SEE LANDSCAPE DWGS FOR DETAIL)		SLAB ON GRADE	—
CONSTRUCTION FENCE		UNIT THAT REQUIRES ENGINEERED PAD EXTENSION (REFER TO PATERSON MEMO P0454-MEMO-21 REVISION 6 DATED AUGUST 24, 2022)	—
PROPERTY BOUNDARY		CLAY SEAL (REFER TO GENERAL NOTES, No.18, ON DWG. No. 1, AND GEOTECHNICAL CONSULTANT'S SPECIFICATIONS)	—
REGULATORY LIMIT		HYDRO SWITCHGEAR	—
3:1 TERRACING MAXIMUM SLOPE		HYDRO TRANSFORMER	—
PONDING AREA WITH SPILLWAY ELEVATION (MAXIMUM 0.30m)		STREET LIGHT STANDARD	—
250# PVC PERFORATED PIPE (REFER TO CITY STD S29 FOR REAR YARD TRENCH AND PIPE DETAILS ONLY) (SUBIRAN APPLIED FOR SLOPE LESS THAN 1.5%)		TACTILE WALKING SURFACE INDICATOR (AS PER CITY OF OTTAWA STD. S06)	—
RAISED CROSSWALK (AS PER CITY OF OTTAWA STD. R15)		PREVIOUS PHASES / PHASES NOT PART OF CURRENT GRADING APPROVAL	—
FIRE WALL LOCATION - SEE ARCHITECTURAL DRAWINGS FOR DETAILS		UNITS REQUIRING WATER PRESSURE REDUCING VALVES	PRV
		PROPOSED COMMUNITY MAILBOX LOCATION	—



No.	BY	DATE	DESCRIPTION
28	S.N.M.	24-02-10	UPDATED PERIMETRIC ROAD DESIGN
26	S.N.C.	23-12-08	UPDATED SIDEWALK/BIKEWAY DESIGN
28	S.N.C.	23-10-06	UPDATED SIDEWALK/BIKEWAY DESIGN
28	S.N.M.	23-08-30	APPROVED SIDEWALK/BIKEWAY DESIGN
23	S.L.M.	23-08-23	APPROVED SIDEWALK/BIKEWAY DESIGN

**TOPOGRAPHIC INFORMATION**  
STANTEC GEOMATICS LIMITED PROJECT NUMBER 161613877-111 DATED MARCH 30, 2021.

**LEGAL INFORMATION**  
CALCULATED M-PLAN PROVIDED BY STANTEC GEOMATICS LTD, PROJECT NUMBER 161613877-132 PHASE 1, RECEIVED APRIL 11, 2022 & PHASE 2, RECEIVED SEPTEMBER 29, 2021

**BENCH MARK**  
ELEVATIONS ARE REFERRED TO THE CANADIAN GEODETIC VERTICAL DATUM (CGVD-1928:1978) AND ARE DERIVED FROM THE CAN-NET VRS NETWORK MONUMENT: OTTAWA ELEVATION = 95.23 METRES.

MINTO GROUP MINTO BROOKLINE PHASE 1 & 2

120 Iber Road Unit 103  
Stittville, Ontario, K2S 1E9  
Tel. (613) 836-0856  
Fax. (613) 836-7183  
www.DSEL.ca

**Ottawa CITY OF OTTAWA**

**GRADING PLAN**

© DSEL

DRAWN BY: G.G.G.	CHECKED BY: S.L.M.	PROJECT No.
DESIGNED BY: G.G.G.	CHECKED BY: S.L.M.	17-982
SCALE:		SHEET No.
		64

HORIZ. 1:500

CITY PLAN No. 18694  
CITY FILE No. D07-16-18-0032