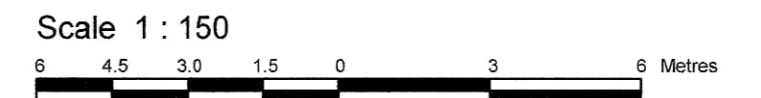


LOTS 559, 560 AND 561 AND PART OF LOTS 579, 580 AND 581 AND PART OF LANE (Closed by Judge's Order Inst. GL52533) REGISTERED PLAN 326 CITY OF OTTAWA Surveyed by Annis, O'Sullivan, Vollebek Ltd.



Metric DISTANCES SHOWN ON THIS PLAN ARE IN METRES AND CAN BE CONVERTED TO FEET BY DIVIDING BY 0.3048

Surveyor's Certificate

- I CERTIFY THAT: 1. This survey and plan are correct and in accordance with the Surveys Act, the Surveyors Act and the regulations made under them. 2. The survey was completed on the 11th day of October, 2023.

Date Oct 20, 2023 Signature T. Hartwick Ontario Land Surveyor

Notes & Legend

Table with 2 columns: Denotes and Description. Includes symbols for Survey Monument Planted, Survey Monument Found, Standard Iron Bar, Short Standard Iron Bar, Iron Bar, Witness, Measured, Annis, O'Sullivan, Vollebek Ltd., Registered Plan 326, various Plans (P2, P3, P4, P5, P6), Maintenance Holes (Storm Sewer, Sanitary, Bell, Traffic, Hydro, Unidentified), Valve Chamber (Watermain), Underground Storm Sewer, Underground Sanitary Sewer, Underground Water, Underground Power, Underground Gas, Underground Traffic, Underground Bell, Overhead Wires, Utility Pole, Anchor, Catch Basin, Light Standard, Top of Grate, Gas Meter, Handhole, Bollard, Sign, Chain Link Fence, Board Fence, Edge of Asphalt, Ministry Transportation of Ontario, Edge of Excavation, Air Conditioner, Diameter, Location of Elevations, Top of Concrete Curb Elevation, Traffic Light, Deciduous Tree.

Bearings are grid, derived from Can-Net 2016 Real Time Network GPS observations and are referenced to Specified Control Points 0191968005 and 01919680105, MTM Zone 9 (76°30' West Longitude) NAD-83 (original).

For bearing comparisons, a rotation of 0°35'20" counter-clockwise was applied to bearings on plan P2 and P3.

ELEVATION NOTES

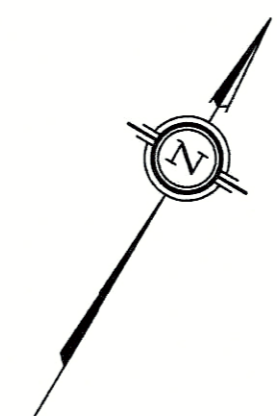
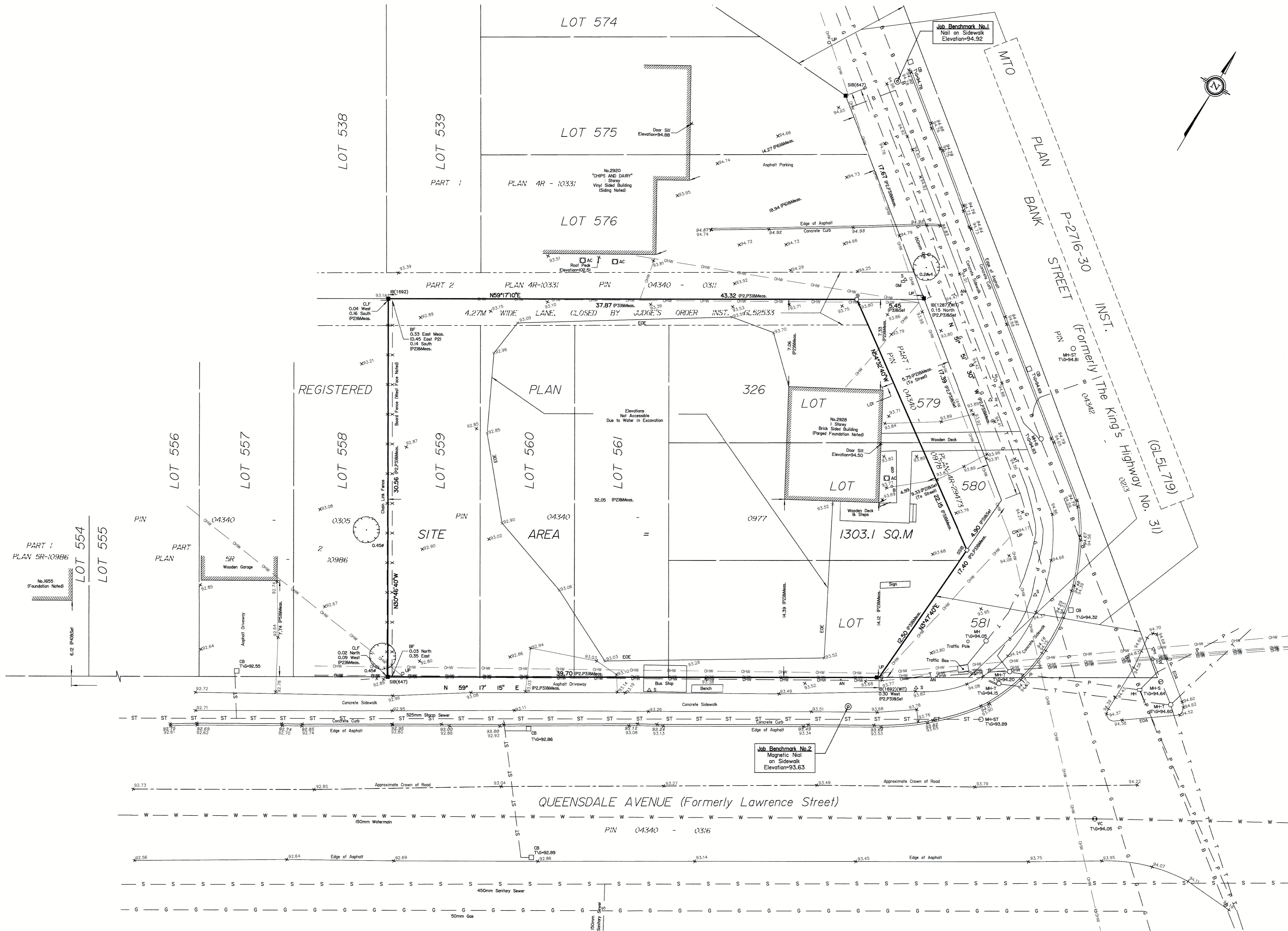
- 1. Elevations shown are geoidetic and are derived from NCC Monument No. 019680289, having an elevation of 87.147 metres, and are referred to the CGVD28 geoidetic datum. 2. It is the responsibility of the user of this information to verify that the job benchmark has not been altered or disturbed and that its relative elevation and description agrees with the information shown on this drawing.

UTILITY NOTES

- 1. This drawing cannot be accepted as acknowledging all of the utilities and it will be the responsibility of the user to contact the respective utility authorities for confirmation. 2. Only visible surface utilities were located. 3. A field location of underground plant by the pertinent utility authority is mandatory before any work involving breaking ground, probing, excavating etc. 4. Underground utility data derived from City of Ottawa utility sheet reference S-17-18-C.

ASSOCIATION OF ONTARIO LAND SURVEYORS PLAN SUBMISSION FORM V-60557 THIS PLAN IS NOT VALID UNLESS IT IS AN EMBOSSED ORIGINAL COPY ISSUED BY THE SURVEYOR In accordance with Regulation 1026, Section 29 (3).

ANNIS, O'SULLIVAN, VOLLEBEK LTD. 14 Concourse Gate, Suite 500 Nepean, Ont. K2E 7S6 Phone: (613) 727-0850 / Fax: (613) 727-1079 Email: info@anniso.com



Vertical text on the far left edge of the page.