

To: Tracey Scaramozzino, Planner III
City of Ottawa

From: Eric A. Bays
Stantec (Ottawa)

Project/File: 160410436

Date: February 29, 2024

**Reference: Zoning Confirmation Report
1034 McGarry Terrace**

The following Zoning Compliance Report has been prepared based on the Site Plan and supporting drawings prepared by Progressive Architects dated February 27, 2024 (revision 2).

1 Zoning Confirmation Report Checklist

A. Project Information			
Review Date:	29 February 2024	Official Plan Designation	Suburban Transect (Schedule A) Town Centre Hub (Schedule B6) Protected Major Transit Station Area (Schedule C1)
Municipal Address:	1034 McGarry Terrace	Legal Description:	Part 1 on 4R-33239 and Part 1 on 4R-31372, Part of Lot 15, Concession 2 (Rideau Front), Former Township of

Reference: 1034 McGarry Terrace

			Nepean, now City of Ottawa (PIN 04732-5799)
Scope of Work:	Mixed use development arranged in two towers of 35 and 26 storeys connected by an 11-storey link. Includes 592 dwelling units and 1120 m ² of at-grade retail space.		
Existing Zoning Code:	Mixed Use Centre Zone MC[2573]	By-law Number:	2008-250
Schedule 1/1A Area:	Schedule 1 & 1A: Area C (Suburban) Schedule 2A: Marketplace Station Schedule 402: Area B	Overlays Applicable:	None

B. Zoning Review				
Proposed Zone/Subzone:	Proposed modifications to Urban Exception [2573]			
Principal Land Use:	Apartment dwelling, high-rise Retail store			
Zoning Provisions	Required	Proposed		Compliant
Lot Width:	No minimum	72.31 m		✓
Lot Area:	No minimum	4,148 m ² †		✓
Front Yard Setback and Corner Side Yard Setback:	No minimum	Front:	0 m	✓
		Corner:	2.15 m	✓
Interior Side Yard Setback: Section 77	No minimum	2.0 m		✓
	Buildings that are 10 storeys and higher in Area B as shown on Schedule 402 are subject to: the minimum interior side and rear yard setback for a tower is 11.5 m	11.65 m		✓
	No minimum	10.15 m		✓

Reference: 1034 McGarry Terrace

Rear Yard Setback: Section 77	Buildings that are 10 storeys and higher in Area B as shown on Schedule 402 are subject to: the minimum interior side and rear yard setback for a tower is 11.5 m	5.9 m	×
Lot Coverage	No maximum	46%	✓
Floor Space Index (FSI)	None	N/A	✓
Building Height:	Minimum: 6.7 m*	Minimum: 7.5 m	✓
	Maximum: 57 m*	Maximum: 130 m	×
Accessory Buildings: (Section 55)	Same as permitted use	N/A	✓
Parking, Queuing, and Loading Provisions			
Parking Zone Calculation Rates:	Area X as per Section 101(5)(a)		
Required Parking Spaces Section 101			
Dwelling units in a mixed use building, all other cases:	0.5 per dwelling unit $(592) \times 0.5 = 296^*$	Standard size 459 Midsize 99	✓
Retail store:	1.25 per 100 m ² of gross floor area $1120 \times (1.25/100) = 14$	Compact 78 Barrier Free A 8	✓
Visitor Parking Spaces: Section 102	0.1 per dwelling unit and no visitor parking spaces are required for the first twelve dwelling units on a lot $(592) \times 0.2 = 118$	Barrier Free B 9 Total Parking Spaces 653	✓
Size of Space: Section 105 and 106	Any motor vehicle parking space must be:		✓

Reference: 1034 McGarry Terrace

	<p>(a) at least 2.6 m wide (b) not more than 3.1 m (c) at least 5.2 m long</p> <p>up to 50% of the parking spaces in a parking lot or parking garage may be reduced to a minimum of 4.6 m long and 2.4 m wide, provided that any such space:</p> <p>(a) is visibly identified as being for a compact car (b) is not a visitor parking space required under Section 102 (c) is not abutting or near a wall, column or similar surface that obstructs the opening of the doors of a parked vehicle or limits access to a parking space, in which case the minimum width is 2.6 m</p> <p>up to 5% of the parking spaces in a parking lot or parking garage may have a minimum width of 1.3 m and a minimum length of 3 m, provided any such space:</p> <p>(a) is not a required parking space under Section 101 (b) is not a required visitor parking space under Section 102</p>		
<p>Driveway Width: Section 107</p>	<p>for an apartment high-rise, the maximum permitted width for a double traffic lane that leads to:</p> <p>(ii) 20 or more parking spaces: 6.7 m</p>		✓
<p>Location of Parking: Section 109</p>	<p>in the MC Zone, no person may park a motor vehicle:</p>		✓

Reference: 1034 McGarry Terrace

	(a) in a required front yard (b) in a required corner side yard, or (c) in the extension of a required corner side yard into a rear yard.		
Landscape Provisions for Parking Lots: Section 110	All outdoor refuse collection and refuse loading areas contained within or accessed via a parking lot must be: (a) located at least 9.0 m from a lot line abutting a public street (b) located at least 3.0 m from any other lot line, and (c) screened from view by an opaque screen with a minimum height of 2.0 m.		✓
Bicycle Parking Rates Section 111			
Apartment dwelling, high rise:	0.50 per dwelling unit $592 \times 0.5 = 296$	301	✓
Retail store:	1 per 250 m ² of gross floor area $1120 \times (1/250) = 5$		✓
Amenity Areas Section 137			
Mixed use building with 9 or more dwelling units:	6 m ² per dwelling unit $592 \times 6 = 3,552 \text{ m}^2$	5,384 m ²	✓
Communal Amenity Area:	a minimum of 50% of the required total amenity area $3552 \times 50\% = 1,776 \text{ m}^2$	2,692 m ²	✓
Urban Exception [2573]			

Reference: 1034 McGarry Terrace

Building Height:	Minimum:	20 m	Minimum:	20 m	✓
	Maximum:	57 m	Maximum:	130 m	×
	only 50% of the building envelope must comply with the minimum building height		23% of building envelope less than 20 m in height		✓
Maximum Gross Floor Area:	total cumulative gross floor area for all uses on the lot: 28,270 m ²		Phase I (completed)	28,270 m ²	×
			Proposed	51,592 m ²	
		Total Proposed GFA		79,862 m ²	
	50% of the ground floor of a building containing dwelling units must be occupied by non-residential uses		58% of the ground floor occupied by non-residential uses		✓
Vehicle Parking:	No more than 12 parking spaces may be provided at grade		0 parking spaces provided at grade		✓
	Minimum parking spaces required for dwelling units in a mixed-use building: 0.5 spaces per dwelling unit 592 × 0.5 = 296		up to 521		✓

E. Comments/ Calculations
<p>All calculations provided in cells above, or within Planning Rationale (Stantec, February 29, 2024)</p> <p>* : provision modified by Urban Exception [2573]</p> <p>† : current lot area of 5,194 m² will be reduced to 4,148 m² upon transfer of the McGarry Terrace extension lands to the City.</p>

Reference: 1034 McGarry Terrace

2 Zoning Confirmation Report Draft List of Requested Relief

By-law Requirement Applicable Section	Required	Proposed
Minimum Tower Setback from an Interior Lot Line: Section 77(4)(c)	11.5 m	5.9 m
Maximum Building Height: Urban Exception [2573]	57 m	130 m
Maximum Cumulative Gross Floor Area: Urban Exception [2573]	28,270 m ²	79,862 m ²

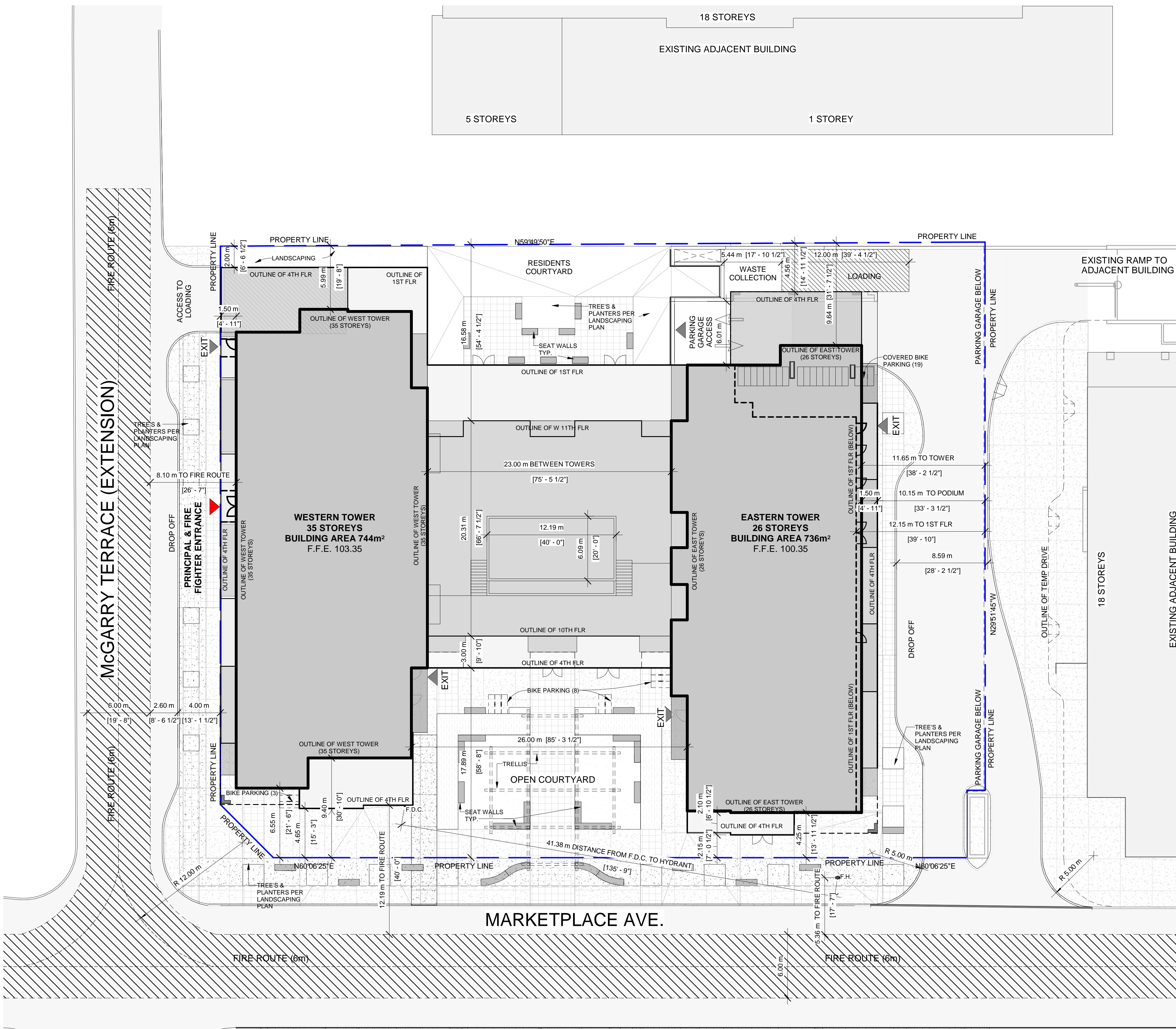
Should you have any questions or require additional information please contact the undersigned.

Respectfully,

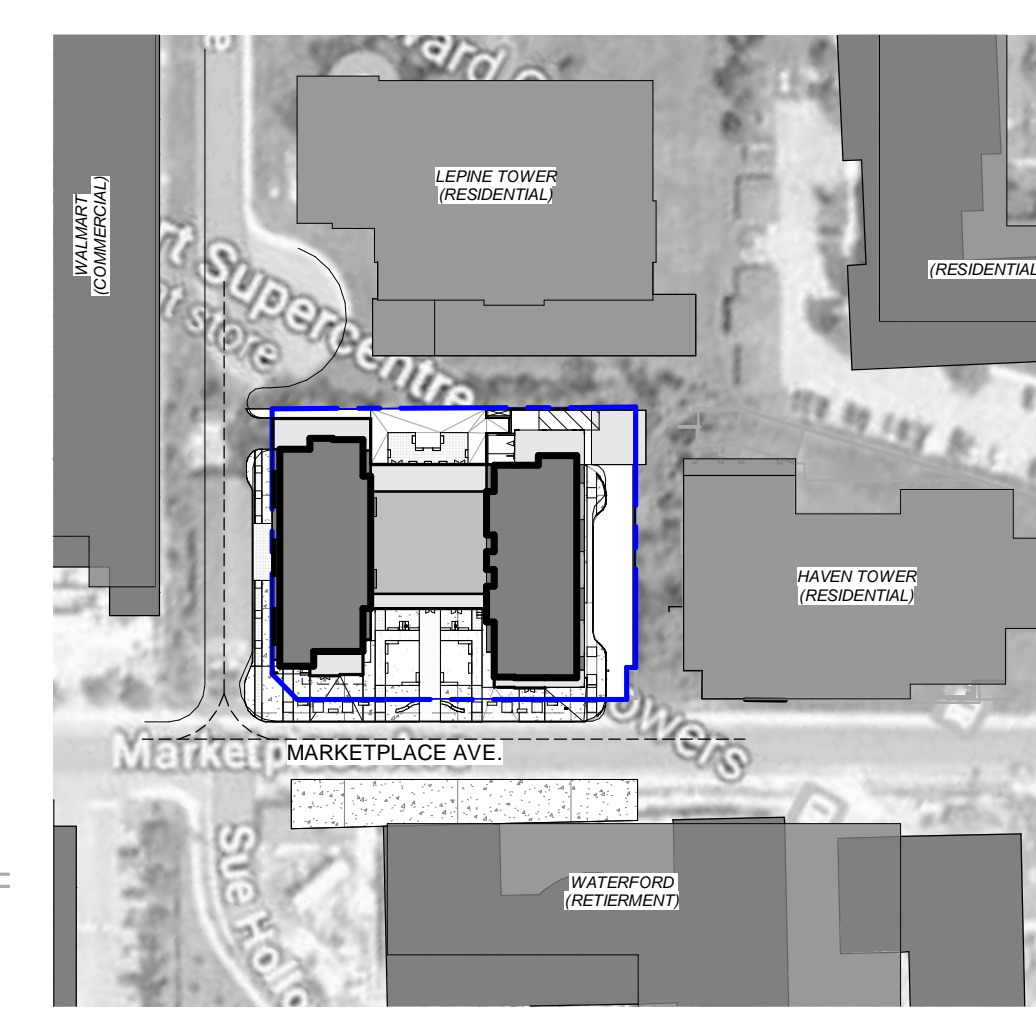
STANTEC CONSULTING LTD.

Eric A. Bays RPP, MCIP
Senior Urban Planner
Phone: (613) 724-4080
eric.bays@stantec.com

Attachment: Architectural Site Plan (A101, Progressive, 27 February 2024, revision 2)
P1 Parking Plan (A001, Progressive, 27 February 2024, revision 2)



1 ARCHITECTURAL SITE PLAN
1 : 200



2 KEYPLAN
1 : 1500

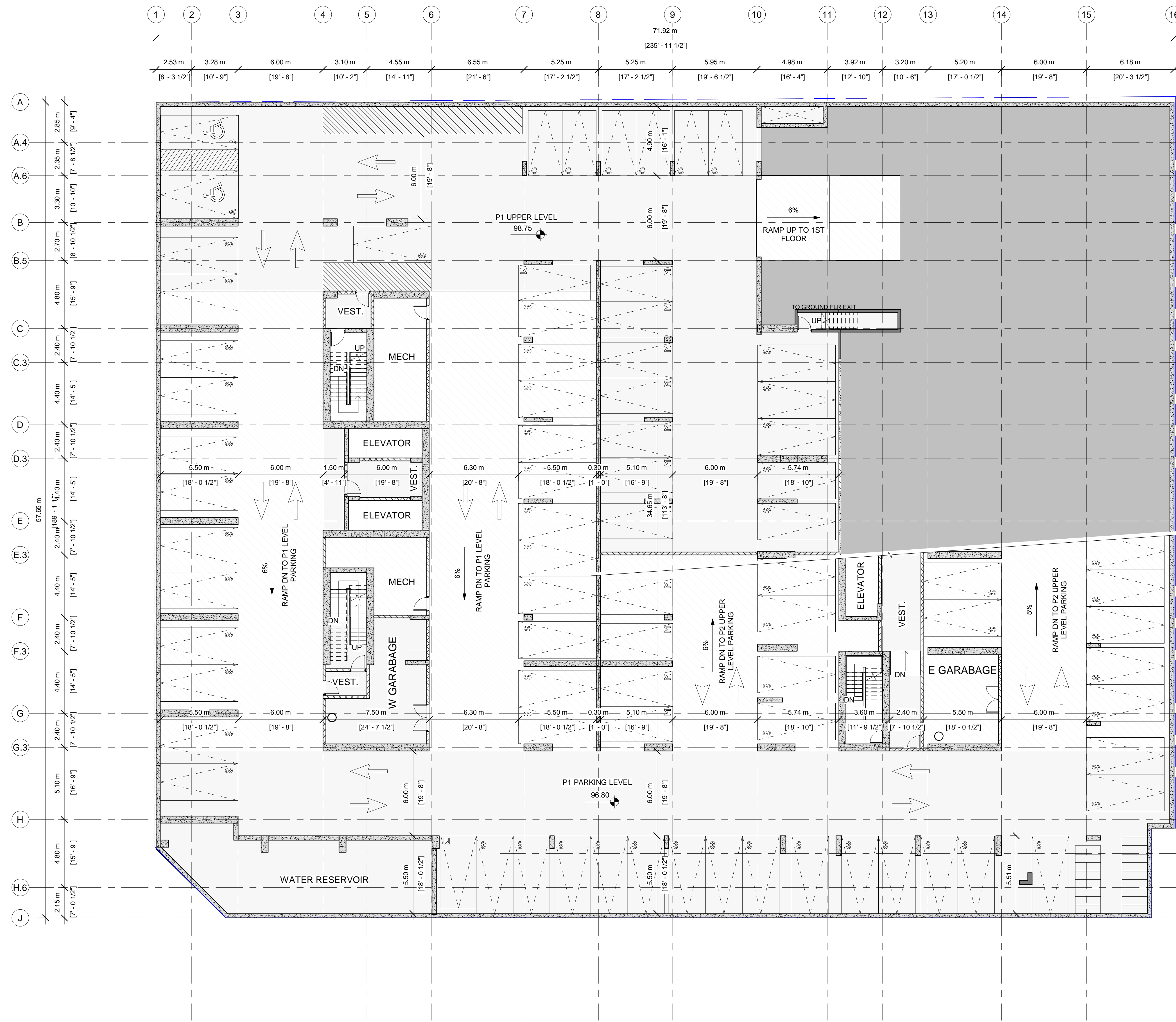
TOTAL UNIT COUNT			
LEVELS	PER FLR	# OF LEVELS	TOTAL
PODIUM & LINK			
2ND- 4TH FLR	25 UNITS	3 LEVELS	75 UNITS
5TH- 9TH FLR	24 UNITS	5 LEVELS	120 UNITS
10TH & 11TH FLR	17 UNITS	2 LEVELS	34 UNITS
WEST TOWER			
12TH FLR	7 UNITS	1 LEVEL	7 UNITS
13TH- 35TH FLR	9 UNITS	23 LEVELS	207 UNITS
EAST TOWER			
12TH FLR	9 UNITS	1 LEVELS	9 UNITS
13TH- 26TH FLR	10 UNITS	14 LEVELS	140 UNITS
			TOTAL 592 UNITS

UNIT TYPE COUNT				
UNIT TYPE	2ND-11TH FLR	WEST TOWER	EAST TOWER	TOTAL
STUDIO	--	46	--	46 (7.8%)
1 BED	143	72	75	290 (49%)
2 BED	76	94	74	244 (41.2%)
3 BED	10	2	--	12 (2%)
TOTAL	229	214	149	592 UNITS

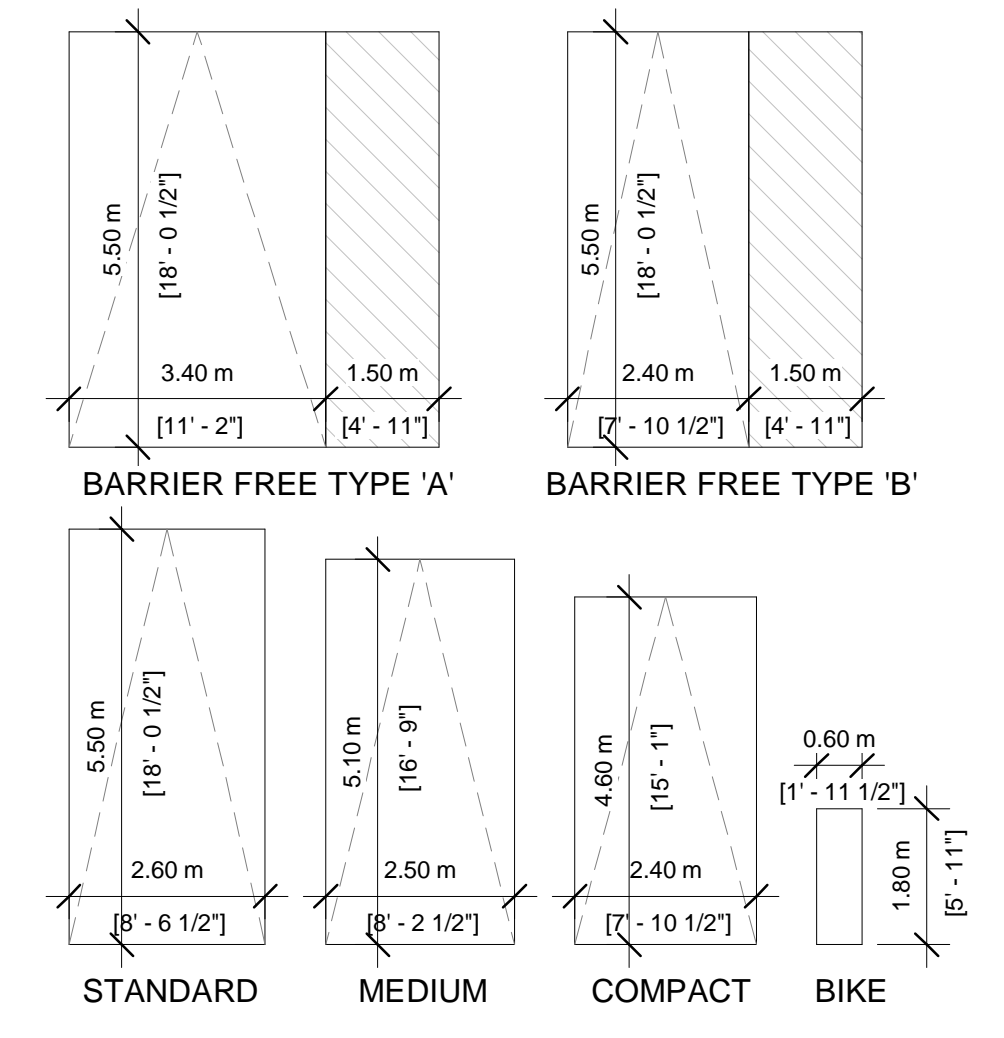
BUILDABLE AREA			
LEVELS	PER FLR	# OF FLRS	TOTAL
PARKING			
P1 PARKING	3033 m²	1 FLRS	3033 m²
P2-P6 PARKING	4128 m²	5 FLRS	20640 m²
P6 LOWER LEVEL	2007 m²	1 FLRS	2007 m²
TOTAL BELOW GRADE 25680 m²			
PODIUM			
1ST FLR	2289 m²	1 FLR	2289 m²
2ND- 4TH FLR	2261 m²	3 FLRS	6783 m²
5TH- 9TH FLR	1942 m²	5 FLRS	9710 m²
10TH & 11TH FLR	1957 m²	2 FLRS	3914 m²
TOWERS			
12TH-35TH FLR WEST	744 m²	24 FLRS	17856 m²
12TH-26TH FLR EAST	736 m²	15 FLRS	11040 m²
			TOTAL ABOVE GRADE 51592 m²

OVERALL PARKING COUNT	
457	PARKING STANDARD 2.6x5.5
98	PARKING MIDSIZE 2.5x5.1
81	PARKING COMPACT 2.4x4.6
8	BF TYPE B PARKING
9	BF TYPE A PARKING
653	

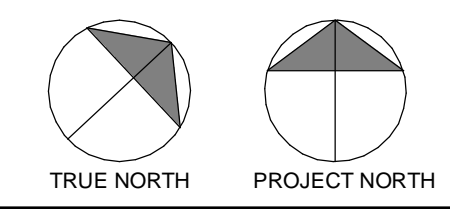
CITY OF OTTAWA ZONING BYLAW 2008-250			
MC2573 MIXED-USE CENTRE ZONE			
PROPOSED APARTMENT DWELLING, HIGH RISE			
PROPOSED USES:			
APARTMENT DWELLING, HIGH RISE (592 UNITS)			
RETAIL STORE: 1120M² G.F.A.			
LOT AREA: 5194.06M²			
LOT FRONTAGE: 70.41M			
LOT DEPTH: 57.55M			
ZONING PROVISION	REQUIRED	PROVIDED	COMPLIANT
MIXED-USE CENTRE ZONE MC2573			
LOT AREA (MIN.)	NO MINIMUM	4,148m²	✓
LOT WIDTH (MIN.)	NO MINIMUM	72.3m	✓
FRONT YARD & CORNER YARD SETBACK (MIN.)	NO MINIMUM	0m, 2.15m	✓/✓
INTERIOR SIDE YARD SETBACK (MIN.)	NO MINIMUM	2.0m	✓
REAR YARD SETBACK (MIN.)	NO MINIMUM	10.15m	✓
FLOOR SPACE INDEX (MAX.)	NO MAXIMUM	17.9 FSI	✓
BUILDING HEIGHT (MIN.)	20 M'†	7.5 m	✓
BUILDING HEIGHT (MAX.)	57 M*	130 m	X
GROSS FLOOR AREA (MAX.)	28,270 M²	67,000 M² (WEST TOWERS 38,730M² + EAST TOWERS 28,270M²)	X
LANDSCAPED AREA (MIN.)	NO MINIMUM	1155 M²	✓
PROVISION FOR HIGH RISE BUILDING (SECTION 7) (AREA B ON SCHEDULE 4#2)			
INTERIOR SIDE YARD (MIN.) PORTION OF A BUILDING THAT ARE 10 STOREYS OR TALLER:	11.5 m	5.9 m & 11.65 m	X/✓
PARKING PROVISIONS (SECTION 10) (AREA C ON SCHEDULE 1A) (320M FROM EXISTING RAPID TRANSIT ON SCHEDULE 2A)			
RESIDENTIAL:			
MINIMUM PARKING SPACES REQUIRED FOR DWELLING UNITS IN A MIXED-USE BUILDING: 0.5 PER DWELLING UNIT:	592 UNITS x 0.5 = 296 SPACES*	523 SPACES	✓
RETAIL STORE (N79): 1.25 SPACES PER 100 M² G.F.A. LESS 200 M²:	(1120 M² - 200) x 0.0125 = 11.5 SPACES	12 SPACES	✓
RESIDENTIAL VISITOR PARKING: 0.3 SPACES PER DWELLING UNIT:	592 UNITS x 0.2 = 118.4 (118) SPACES*	118 SPACES	✓
TOTAL VEHICLE PARKING SPACES:	426 SPACES	653 SPACES	✓
BICYCLE PARKING (SECTION 11)			
RESIDENTIAL:			
DWELLING UNIT IN THE SAME BUILDING AS A NON-RESIDENTIAL USE: 0.5 SPACES PER DWELLING UNIT:	592 UNITS x 0.5 = 296 SPACES	296 SPACES	✓
RETAIL STORE (R): 1 SPACE PER 250 M² G.F.A.	1120 X 0.004 = 4.5 (5) SPACES	5 SPACES	✓
TOTAL BICYCLE PARKING SPACES:	301 SPACES	301 SPACES	✓
AMENITY AREA (SECTION 13) (MIXED USE BUILDING WITH NINE OR MORE DWELLING UNITS)			
RESIDENTIAL:			
6 M² PER DWELLING UNIT AND 10% OF THE GROSS FLOOR AREA OF EACH ROOMING UNIT:	592 UNITS x 6 = 3552 M²	5385 M²	✓
COMMUNAL AMENITY AREA: MINIMUM OF 50% OF THE REQUIRED TOTAL:	3552 X 50% = 1776 M²	2692 M²	✓
OTHER PROVISIONS			
50% OF THE GROUND FLOOR OF A BUILDING CONTAINING DWELLING UNITS MUST BE OCCUPIED BY NON-RESIDENTIAL USES			
NO MORE THAN 12 PARKING SPACES MAY BE PROVIDED AT GRADE			
NOTES:			
* PROVISION OF URBAN EXCEPTION 2573			
† ONLY 50% OF THE BUILDING ENVELOPE MUST COMPLY WITH THE MINIMUM BUILDING HEIGHT			
‡ COMMUNAL AMENITY AREA INCLUDES PUBLICLY ACCESSIBLE FORECOURT			



P1 PARKING LEVEL	
VEHICULAR PARKING:	
STANDARD	51 SPACES
MIDSIZE	18 SPACES
COMPACT	6 SPACES
TYPE 'A' BARRIER FREE	1 SPACES
TYPE 'B' BARRIER FREE	1 SPACES
TOTAL PARKING	77 TOTAL
BIKE PARKING:	
TOTAL PARKING	17 TOTAL



1 P1 PARKING PLAN
1 : 150



ALL DRAWINGS, SPECIFICATIONS AND OTHER RELATED DOCUMENTS ARE THE COPYRIGHT PROPERTY OF THE CONSULTANT AND SHALL BE RETURNED UPON REQUEST. REPRODUCTION OF DRAWINGS AND RELATED DOCUMENTS, IN WHOLE OR IN PART, IS FORBIDDEN WITHOUT THE WRITTEN PERMISSION OF THE CONSULTANT. THE CONTRACTOR SHALL CHECK AND VERIFY ALL PERTINENT DIMENSIONS AND REPORT ANY DISCREPANCIES TO THE CONSULTANT BEFORE PROCEEDING WITH THE WORK. THIS DRAWING SHALL NOT BE USED FOR CONSTRUCTION UNLESS IT IS COUNTERSIGNED BY THE CONSULTANT. THIS DRAWING IS NOT TO BE SCALED. USE FIGURED DIMENSIONS ONLY.



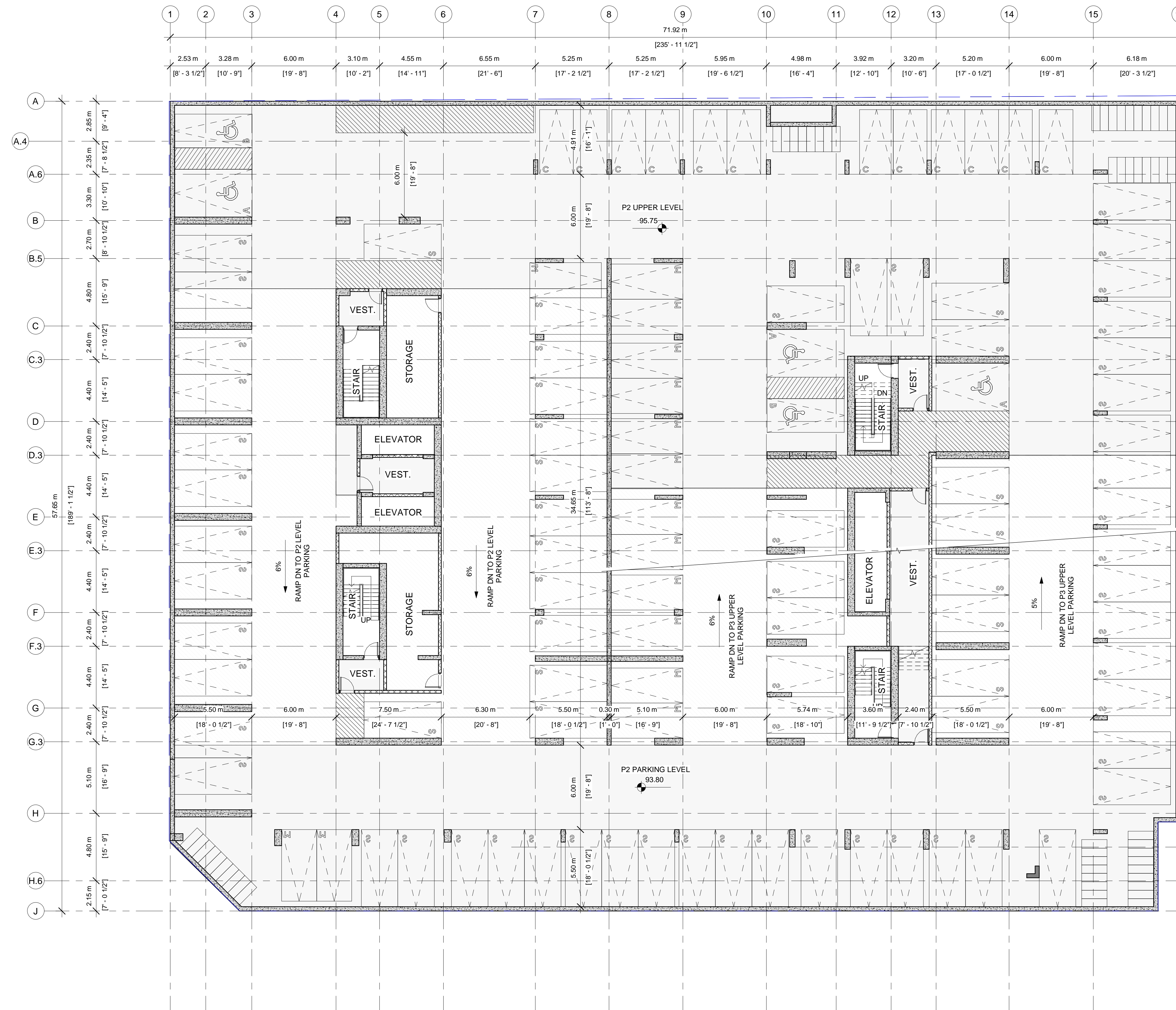
8		16	
7		15	
6		14	
5		13	
4		12	
3		11	
2	FEB 27.24	PHASE 2 PRE-CONSULT.	10
1	DEC 21.23	RE-ZONING	9
rev.	date	issued for	rev. date issued for

project:
MARKETPLACE WEST
address: 1034 MCGARRY TERRACE, OTTAWA ON

sheet name:
P1 PARKING PLAN

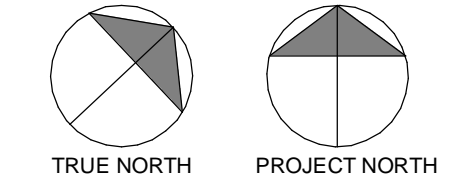
project no.:
22-0039

sheet no.:
A101

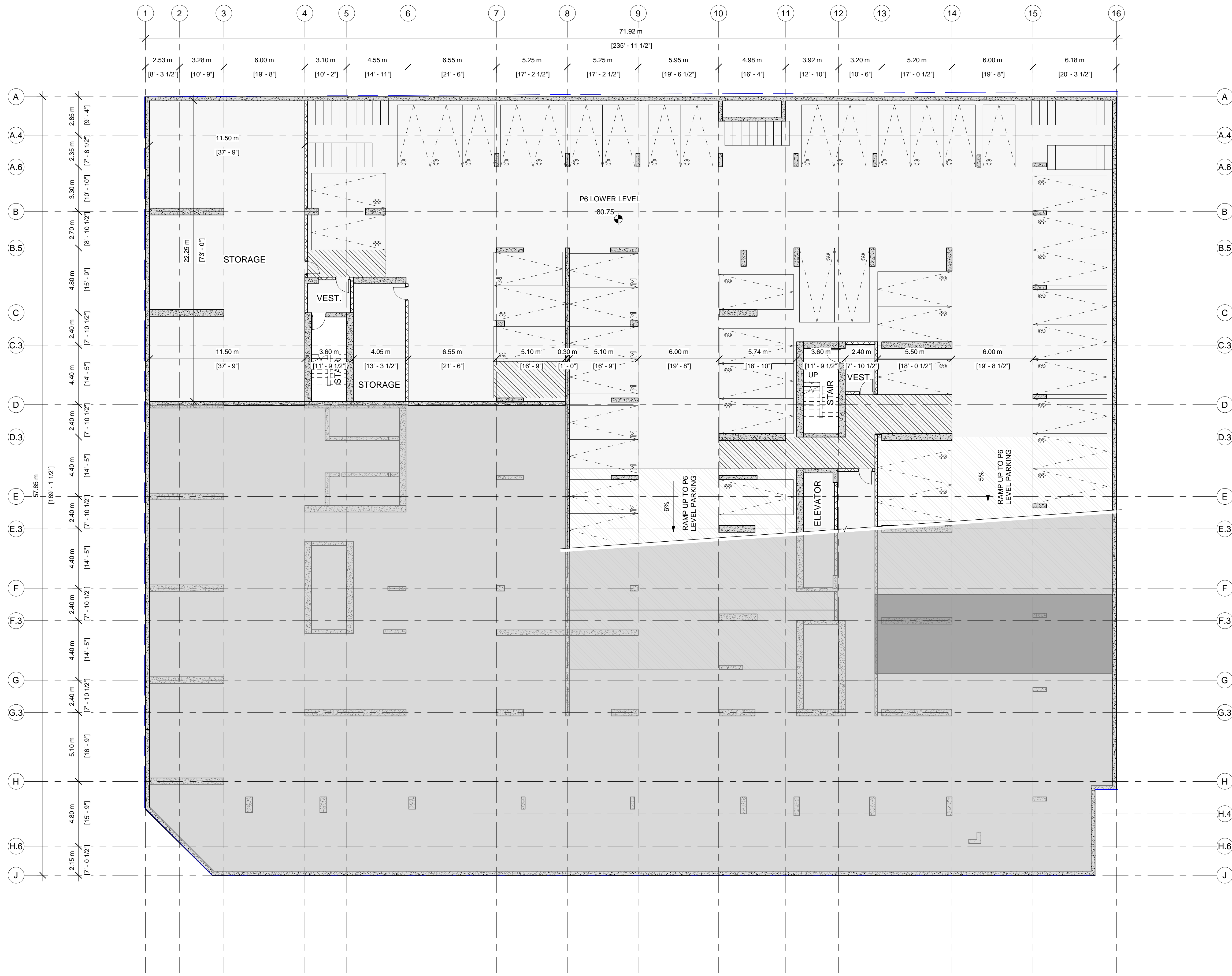


P2 PARKING LEVEL	
VEHICULAR PARKING:	
STANDARD.....	76 SPACES
MIDSIZE.....	15 SPACES
COMPACT.....	12 SPACES
TYPE A BARRIER FREE.....	3 SPACES
TYPE B BARRIER FREE.....	2 SPACES
TOTAL PARKING.....	108 TOTAL
BIKE PARKING:	
TOTAL PARKING.....	53 TOTAL

1 P2 PARKING (TYP P2-P6 LEVELS)
1 : 150

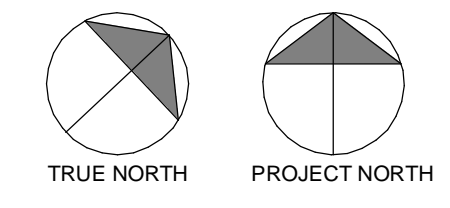


8		16	
7		15	
6		14	
5		13	
4		12	
3		11	
2	FEB 27.24	PHASE 2 PRE-CONSULT.	10
1	DEC 21.23	RE-ZONING	9
rev.	date	issued for	rev. date issued for



P6 LOWER LEVEL PARKING	
VEHICULAR PARKING:	
STANDARD.....	25 SPACES
MIDSIZE.....	9 SPACES
COMPACT.....	15 SPACES
TOTAL PARKING.....	49 TOTAL
BIKE PARKING:	
TOTAL PARKING.....	44 TOTAL

1 P6 LOWER LEVEL
1:150



8		16	
7		15	
6		14	
5		13	
4		12	
3		11	
2	FEB 27.24	PHASE 2 PRE-CONSULT.	10
1	DEC 21.23	RE-ZONING	9
rev.	date	issued for	rev. date issued for