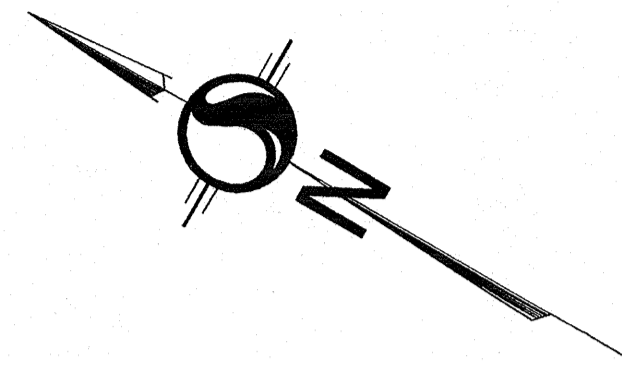


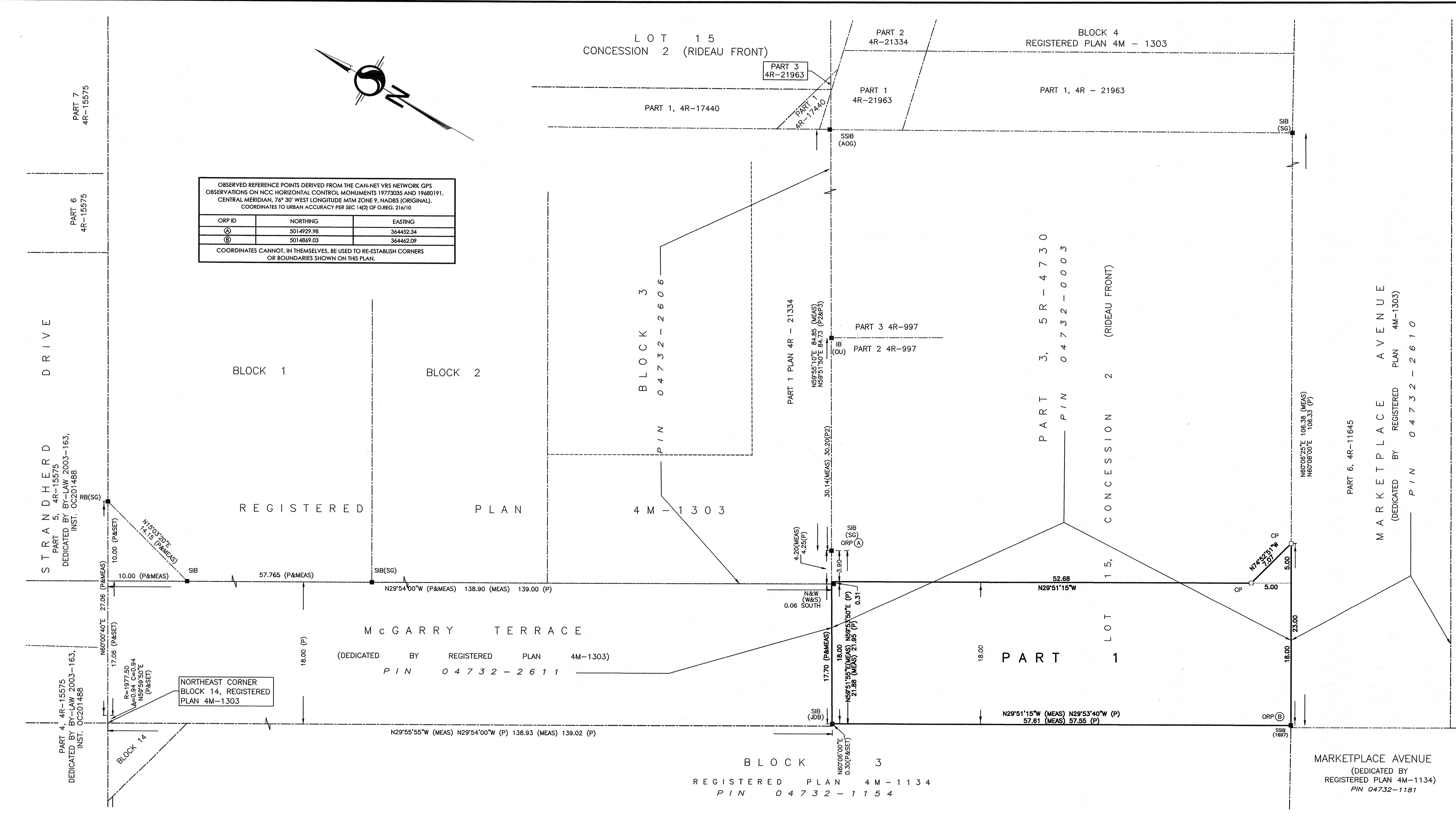
13 September 2018 8:51 AM



OBSERVED REFERENCE POINTS DERIVED FROM THE CAN-NET VRS NETWORK GPS OBSERVATIONS ON NCC HORIZONTAL CONTROL MONUMENTS 19773035 AND 19680191, CENTRAL MERIDIAN, 76° 30' WEST LONGITUDE MTM ZONE 9, NAD83 (ORIGINAL), COORDINATES TO URBAN ACCURACY PER SEC 14(2) OF O.REG. 216/10

ORP ID	NORTHING	EASTING
Ⓐ	5014929.98	364452.34
Ⓑ	5014869.03	364462.09

COORDINATES CANNOT, IN THEMSELVES, BE USED TO RE-ESTABLISH CORNERS OR BOUNDARIES SHOWN ON THIS PLAN.



I REQUIRE THIS PLAN TO BE DEPOSITED UNDER THE LAND TITLES ACT.

DATE: Sept 13/18

T. HARTWICK
ONTARIO LAND SURVEYOR

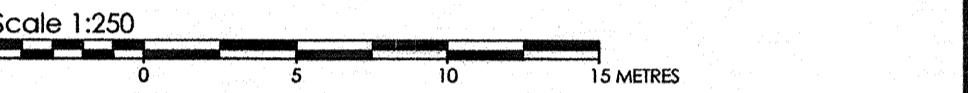
PLAN 4R-31372
RECEIVED AND DEPOSITED
DATE: Sept 13/18

D. Bowdeman
REPRESENTATIVE FOR THE LAND REGISTRAR FOR THE LAND TITLES DIVISION OF OTTAWA-CARLETON No. 4

SCHEDULE			
PART	LOT	CONCESSION	PIN
1	PART OF 15	2 (RIDEAU FRONT)	PART OF 04732-0003
AREA			
1	PART OF 15	2 (RIDEAU FRONT)	PART OF 04732-0003
1049 m²			

PART 1 COMPRISES PART OF PIN 04732-0003

PLAN OF SURVEY OF
**PART OF LOT 15
CONCESSION 2 (RIDEAU FRONT)**
(GEOGRAPHIC TOWNSHIP OF NEPEAN)
CITY OF OTTAWA



METRIC CONVERSION
DISTANCES AND COORDINATES SHOWN ON THIS PLAN ARE IN METRES AND CAN BE CONVERTED TO FEET BY DIVIDING BY 0.3048

GRID SCALE CONVERSION
DISTANCES ARE GROUND AND CAN BE CONVERTED TO GRID BY MULTIPLYING BY THE COMBINED SCALE FACTOR OF 0.9999934.

BEARING NOTE
BEARINGS ARE GRID, DERIVED FROM THE CAN-NET VRS NETWORK GPS OBSERVATIONS ON NCC HORIZONTAL CONTROL MONUMENTS 19773035 AND 19680191, CENTRAL MERIDIAN, 76° 30' WEST LONGITUDE MTM ZONE 9, NAD83 (ORIGINAL).

19773035 N:5006060.42 E:324888.04
19680191 N:5033554.26 E:388064.94

LEGEND

■	DENOTES	FOUND MONUMENTS
□		SET MONUMENTS
IB		IRON BAR
IB#		ROUND IRON BAR
SIB		STANDARD IRON BAR
SSIB		SHORT STANDARD IRON BAR
CC		CUT CROSS
CP		CONCRETE PIN
WIT		WITNESS
PI#		PROPERTY IDENTIFICATION NUMBER
MEAS		MEASURED
PROP		PROPORTIONED
OU		ORIGIN UNKNOWN
SG		STANTEC GEOMATICS LTD.
ORP		OBSERVED REFERENCE POINT
P		4M-1303
AOG		ANNIS, O'SULLIVAN, VOLLEBEKK LTD.
1697		J.P. SHIPMAN O.L.S.
RB		ROCK BAR
P2		PLAN SR-4419
P3		PLAN SR-4730
JDB		J.D. BARNES LTD.

SURVEYOR'S CERTIFICATE

I CERTIFY THAT:

- THIS SURVEY AND PLAN ARE CORRECT AND IN ACCORDANCE WITH THE SURVEYS ACT, THE SURVEYORS ACT AND THE LAND TITLES ACT AND THE REGULATIONS MADE UNDER THEM.
- THE SURVEY WAS COMPLETED ON THE 5th DAY OF SEPTEMBER, 2018.

DATE: Sept 13/18

T. HARTWICK
ONTARIO LAND SURVEYOR

Stantec Geomatics Ltd.

CANADA LANDS SURVEYORS
ONTARIO LAND SURVEYORS
1331 CLYDE AVENUE, SUITE 400
OTTAWA, ONTARIO, K3C 3K4
TEL: 613.722.4420 FAX: 613.722.2799
stantec.com