

The intended plot size of the plan is 610 mm in width by 457 mm in height when plotted at a scale of 1:750.

Metric
 DISTANCES AND COORDINATES SHOWN ON THIS PLAN ARE IN METRES AND CAN BE CONVERTED TO FEET BY DIVIDING BY 0.3048.

Surveyor's Certificate

I CERTIFY THAT:
 1. This survey and plan are correct and in accordance with the Surveys Act, the Surveyors Act and the Land Titles Act and the regulations made under them.
 2. The survey was completed on the __ day of _____, 2024.

MMM DD YYYY Date EMMETT KETCHUM
 Ontario Land Surveyor

This Plan of Survey relates to AOLS Plan Submission Form number XXX

**PLAN OF SURVEY OF
 PART OF LOT 17
 CONCESSION 4 (Rideau Front)
 GEOGRAPHIC TOWNSHIP OF
 NEPEAN
 CITY OF OTTAWA**
 Surveyed by Annis, O'Sullivan, Vollebakk Ltd.

PRELIMINARY

Area sqm	SCHEDULE			
	PART	PART OF LOT	CONCESSION	PART OF PIN
7202	1	17	4 (RIDEAU FRONT)	004467 - 0027
434	2			

Notes & Legend

- Denotes Survey Monument Planted
- " Survey Monument Found
- SIB " Standard Iron Bar
- SSIB " Short Standard Iron Bar
- IB " Iron Bar
- Meas. " Measured
- C/ " Calculated Per
- W " Well Cap
- UP " Utility Pole
- AN " Anchor
- OHW " Overhead Wires
- (P1) " Plan 4R-10384
- (P2) " Plan 4R-26129
- (P1) " Plan 4R-11854

Distances shown on this plan are ground distances and can be converted to grid distances by multiplying by the combined scale factor of 0.999938.

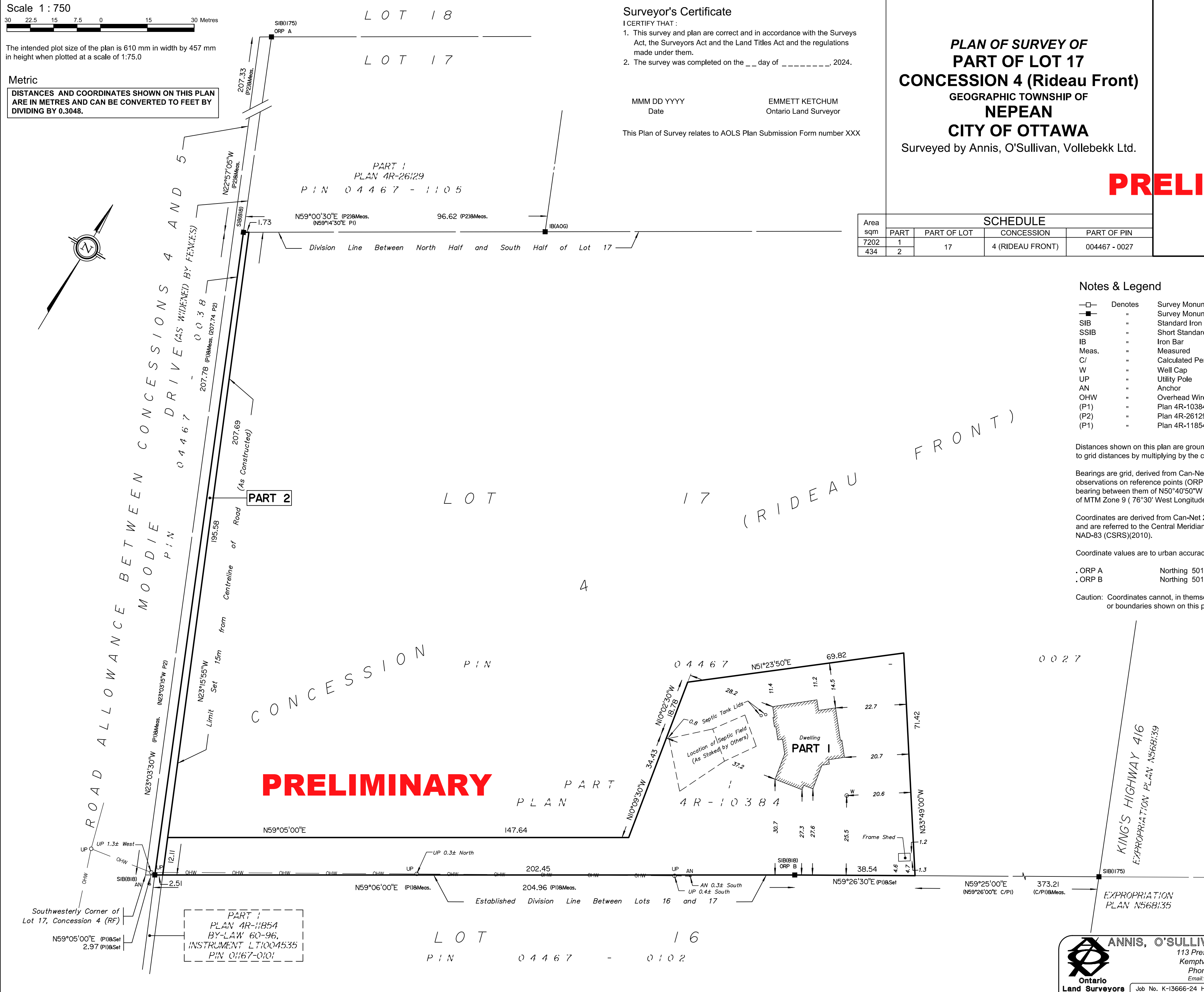
Bearings are grid, derived from Can-Net 2016 Real Time Network GPS observations on reference points (ORP A and ORP B), shown hereon, having a bearing between them of N50°40'50"W and are referenced to the Central Meridian of MTM Zone 9 (76°30' West Longitude) NAD-83 (CSRS)(2010).

Coordinates are derived from Can-Net 2016 Real Time Network GPS observations and are referred to the Central Meridian of MTM Zone 9 (76°30' West Longitude) NAD-83 (CSRS)(2010).

Coordinate values are to urban accuracy in accordance with O. Reg. 216/10.

. ORP A Northing 5013457.92 Easting 360023.76
 . ORP B Northing 5013181.07 Easting 360361.76

Caution: Coordinates cannot, in themselves, be used to re-establish corners or boundaries shown on this plan.



PRELIMINARY

ANNIS, O'SULLIVAN, VOLLEBEKK LTD.
 113 Prescott Street, Box 1340
 Kemptville, Ontario K0G 1J0
 Phone: (613) 258-1717
 Email: Kemptville@aovltd.com

Ontario Land Surveyors