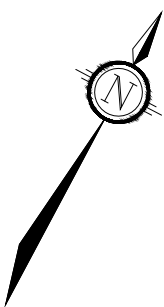
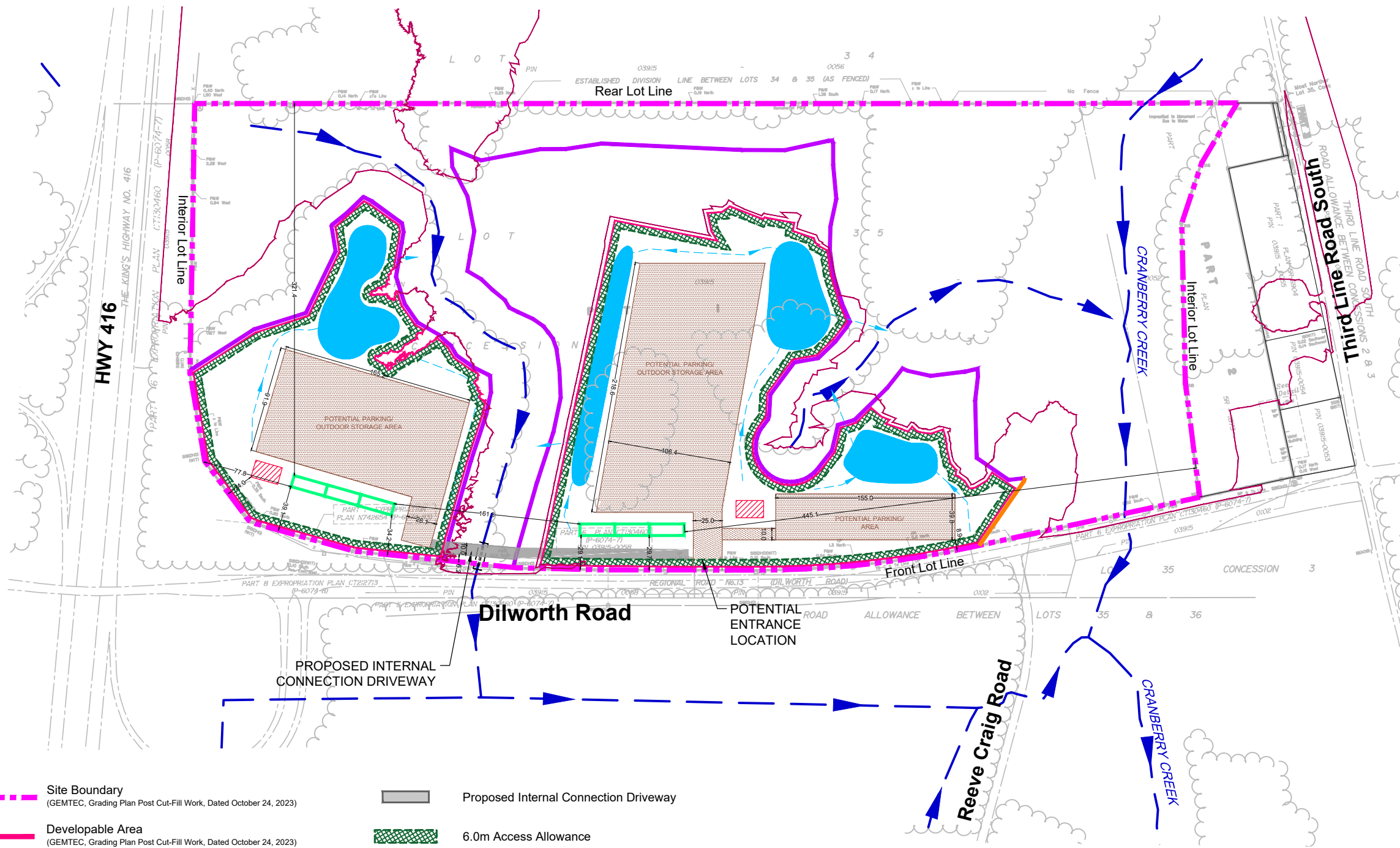


MA\2023\123081\CAD_Existing\123081-CP1.dwg, CP, Oct 31, 2025 - 4:14pm, wsl:oss



LEGEND

- | | | | |
|--|---|--|---|
| | Site Boundary
(GEMTEC, Grading Plan Post Cut-Fill Work, Dated October 24, 2023) | | Proposed Internal Connection Driveway |
| | Developable Area
(GEMTEC, Grading Plan Post Cut-Fill Work, Dated October 24, 2023) | | 6.0m Access Allowance |
| | 30m Setback (From Local Wetland/Watercourse)
(GEMTEC, Grading Plan Post Cut-Fill Work, Dated October 24, 2023) | | potential parking/
outdoor storage area |
| | 50m Setback (From Provincially Significant Wetland)
(GEMTEC, Grading Plan Post Cut-Fill Work, Dated October 24, 2023) | | potential storm pond area |
| | Proposed Floodline
(GEMTEC, Grading Plan Post Cut-Fill Work, Dated October 24, 2023) | | potential footprint for building
occupancies |
| | Watercourse
(GEMTEC, Grading Plan Post Cut-Fill Work, Dated October 24, 2023) | | potential septic system area |
| | Treeline
(GEMTEC, Grading Plan Post Cut-Fill Work, Dated October 24, 2023) | | potential swale to storm pond area |

NOVATECH

Engineers, Planners & Landscape Architects
Suite 200, 240 Michael Cowpland Drive
Ottawa, Ontario, Canada K2M 1P6

Telephone (613) 254-9643
Facsimile (613) 254-5867
Website www.novatech-eng.com

2095 DILWORTH ROAD

CONCEPT PLAN

SCALE 1 : 4000

DATE	JOB	FIGURE
OCT 2025	123081	CP1