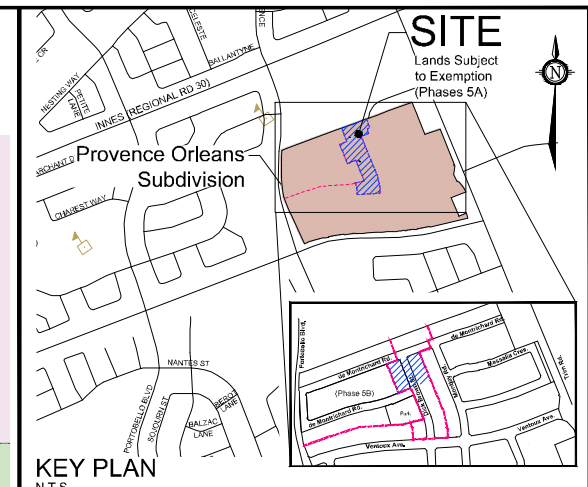


LEGEND

- Minimum Zoning Setback
- Sanitary Manhole
- Storm Manhole
- Hydrant
- Road Catchbasin
- Hydro Transformer
- Service Location (Wtr, San & Stm)
- GLB NAP Communications Vault
- CMB Community Mailbox
- Joint Utility Trench (JUT)
- Proposed Street Tree Location



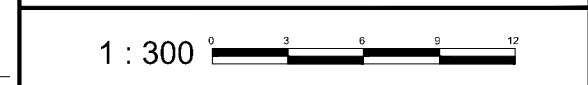
KEY PLAN
N.T.S.

CONCEPTUAL LANDSCAPE PLAN

PROVENCE ORLEANS SUBDIVISION - PHASE 5A

PART LOT 2, CON 9
Geographic Township of Cumberland
CITY OF OTTAWA

- NOTES:**
1. 27' unit footprint based on preliminary product design & are shown for demonstration purposes. Actual units may vary.
 2. Soil Volume Assumptions:
 - 1m soil depth
 - 1m JUT depth
 3. Site is located in sensitive marine clay soils (Geotechnical Report PG4278-1, Rev.5, September 22, 2022 BY Patterson Group).
 4. Services located under driveway where it permits planting of additional tree.



No.	REVISION	DATE	BY
6.	ISSUED FOR CITY REVIEW	JULY 30/24	TJM
5.	REVISED PER COMMENTS	MAY 07/24	TJM
4.	REVISED PER COMMENTS	APR 05/24	RT
3.	REVISED PER COMMENTS	MAR 04/24	TJM
2.	JUT ADDED	FEB 16/24	TJM
1.	ISSUED FOR CITY REVIEW	JAN 15/24	TJM

Engineers, Planners & Landscape Architects
Suite 200, 240 Michael Cowland Drive
Ottawa, Ontario, Canada G2M 1P5
Telephone: (613) 254-9643
Facsimile: (613) 254-5967
Website: www.novatech-eng.com

ISSUED
MAY 2024

PROJECT No.
117155

DRAWING No.
117155-PH5A-LP

M:\2017\117155\CAD\Planning\Site Plans\117155-PH5A-LP.dwg, LP, Jul 18, 2024 - 4:51pm, mleat

