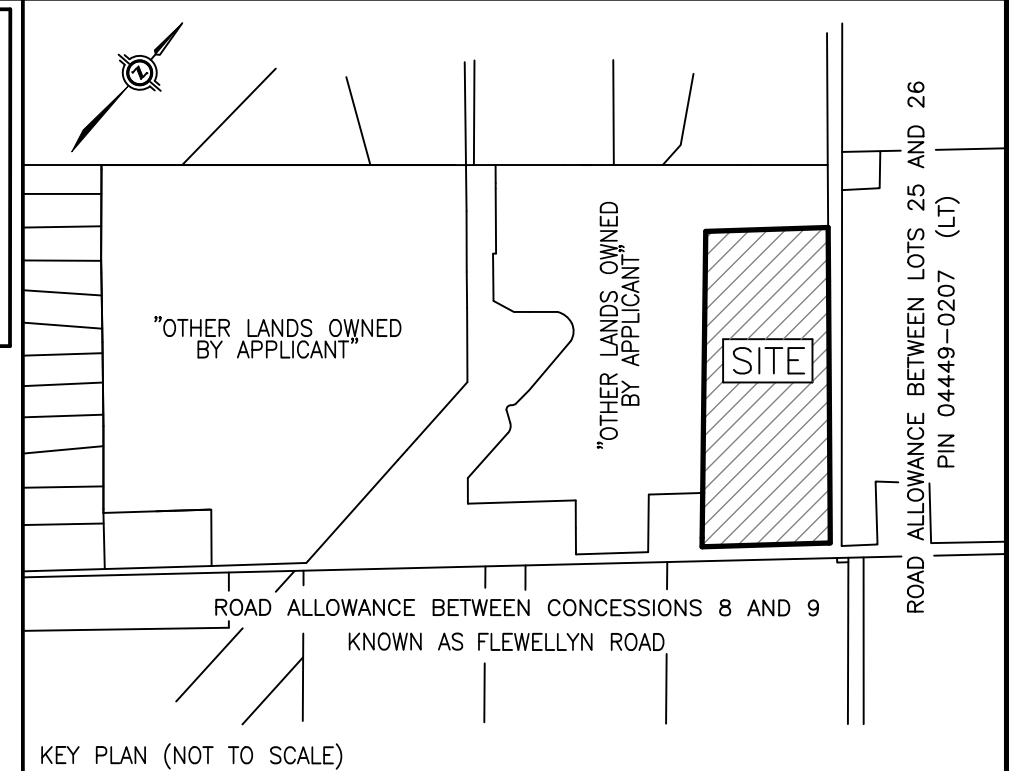


SUBJECT TO THE CONDITIONS, IF ANY, SET FORTH IN OUR LETTER DATED.....THIS DRAFT PLAN IS APPROVED BY THE CITY OF OTTAWA UNDER SECTION 51 OF THE PLANNING ACT THIS DAY OF 2025.

--- ALLISON HAMLIN, M.C.P., R.P.P., ACTING MANAGER
DEVELOPMENT REVIEW-WEST
PLANNING, DEVELOPMENT AND BUILDING SERVICES DEPARTMENT - CITY OF OTTAWA



KEY PLAN (NOT TO SCALE)

DRAFT PLAN OF SUBDIVISION OF
PART OF LOT 25
CONCESSION 9
GEOGRAPHIC TOWNSHIP OF GOULBOURN
NOW IN THE
CITY OF OTTAWA
SCALE: 1 : 1000
J.D. BARNES LIMITED
© COPYRIGHT 2025

METRIC DISTANCES AND/OR COORDINATES SHOWN ON THIS PLAN ARE IN METRES AND CAN BE CONVERTED TO FEET BY DIVIDING BY 0.3048.

NOTES
ALL DISTANCES ON CURVES ARE ARC DISTANCES UNLESS OTHERWISE SPECIFIED

ADDITIONAL INFORMATION
As required under section 51(17) of the Planning Act R.S.O. 2001

(a)(b)(c)(d)(e)(f)(g)(h) and (i) - As shown on this Plan.
(j) - As shown on this Draft and Key Plan
(k) - Land to be used in accordance with the Schedule of Land Use.
(l)(m) - Full Municipal Services
(n) - See Soils Report

SURVEYOR'S CERTIFICATE
I HEREBY CERTIFY THAT THE BOUNDARIES OF THE LAND TO BE SUBDIVIDED ARE CORRECTLY SHOWN.

--- MAY 26, 2025 ---
DATE SHAWN LEROUX
ONTARIO LAND SURVEYOR

SCHEDULE OF LAND USE		
LAND USE	BLOCK(S)	AREA (sq. m)
SINGLE DETACHED	BLOCKS 1 TO 16, BOTH INCLUSIVE	29,201.5
STANDARD TOWNHOUSE	BLOCKS 17 TO 29, BOTH INCLUSIVE	45,326.6
VISTA	BLOCK 30	252.0
PARK	BLOCK 31	4,118.3
SWM POND	BLOCK 32	20,922.4
ROAD WIDENING	BLOCK 33	1,794.1
NATURAL HERITAGE	BLOCK 34	3,164.0
UTILITY CORRIDOR	BLOCK 35	2,283.7
STREETS	STREETS 1 TO 9, BOTH INCLUSIVE	43,430.9
TOTAL:		150,493.4

OWNER'S CERTIFICATE
CAVAN (STITTSVILLE SOUTH) INC., BEING A REGISTERED OWNER OF THE SUBJECT LANDS HEREBY AUTHORIZES J.D. BARNES LIMITED TO PREPARE AND SUBMIT THIS DRAFT PLAN OF SUBDIVISION FOR APPROVAL.

--- DATE ---
FRANK CAIRO
PRESIDENT
(I HAVE THE AUTHORITY TO BIND THE CORPORATION)
CAVAN (STITTSVILLE SOUTH) INC.

J.D. BARNES SURVEYING
LIMITED MAPPING GIS
LAND INFORMATION SPECIALISTS
45 STACE DRIVE, SUITE 100, KANATA, ON K2A 2A9
T: (613) 751-7244 F: (613) 254-8659 www.jdbarnes.com

DRAWN BY: JM CHECKED BY: SL DATED: 5/28/2025
FILE: G:\23-10-060\00\Drawing\Draft Plan East\Ver B\23-10-060-00_DP.dwg