

Key Plan

LEGEND

PLANTING

DECIDUOUS STREET TREE

LARGE DECIDUOUS TREE

CONIFEROUS TREE

SEEDING

EXISTING VEGETATION

SLOPED GRASS (MAX. 25%)

SURFACING

C.I.P. CONCRETE

C.I.P. CONCRETE - SPLASH PAD

ASPHALT PAVING

ENGINEERED WOOD FIBER

SAND PLAY

STONEDUST PAVING

AMENITIES

ACCESSIBLE BENCH

WASTE RECEPTACLE

PICNIC TABLE

SHADE STRUCTURE

PING-PONG TABLE

PARK SIGN

GRADING

EXISTING GRADES

PRELIMINARY GRADES

| PROPOSED TREE CANOPY PROJECTIONS | | | |
|--|--|--|---|
| TREE TYPE/SIZE | CROWN AREA PER TREE STANDARD RANGE (m ²) | CROWN AREA PER TREE USED FOR CALC. (m ²) | SITE CANOPY COVER |
| LARGE (86) | 135-250* | 192 | CANOPY (W. OVERLAP): 11,180m ² |
| CONIFER (46) | 45-96* | 70 | |
| EXISTING TREE CANOPY TO BE PROTECTED | | | |
| EXISTING TREE CANOPY, m ² CALCULATION BASED ON SURVEYED DBH AND AERIAL IMAGERY | | | CANOPY (W. OVERLAP): 4,640m ² |
| *RANGE OF CROWN AREAS IS IN ACCORDANCE WITH PROPOSED TREES SPECIES | | | SITE: 30,000m ² |
| **CROWN AREAS ARE ACCORDING TO THE AVERAGE MATURE CANOPY SIZE OF THE RESPECTIVE SPECIES. CANOPY SIZING HAS BEEN DETERMINED IN REFERENCE TO VARIOUS ARBORICULTURAL AND BOTANICAL SOURCES, SUCH AS: ONTARIO MINISTRY OF NATURAL RESOURCES & FORESTRY (OMNRF); US FOREST SERVICE; FARRAR, J.L. TREES IN CANADA, UNIVERSITY OF GUELPH ABORETUM, VARIOUS PUBLICATIONS | | | |
| DISCLAIMER: WHILE EVERY EFFORT WILL BE MADE TO PROVIDE THE FEATURES SHOWN ON THIS PLAN, SOME REVISIONS MAY BE NECESSARY DURING DETAILED DESIGN, TENDERING AND CONSTRUCTION. | | | TOTAL PERCENT COVER (EXCLUDING EXISTING TREES RETAINED): 37.27% |



LEGEND

--- PROPERTY LINE

PLANTING

- DECIDUOUS STREET TREE
- LARGE DECIDUOUS TREE
- CONIFEROUS TREE
- SEEDING

SURFACING

- C.I.P CONCRETE
- ASPHALT PAVING
- ENGINEERED WOOD FIBER

AMENITIES

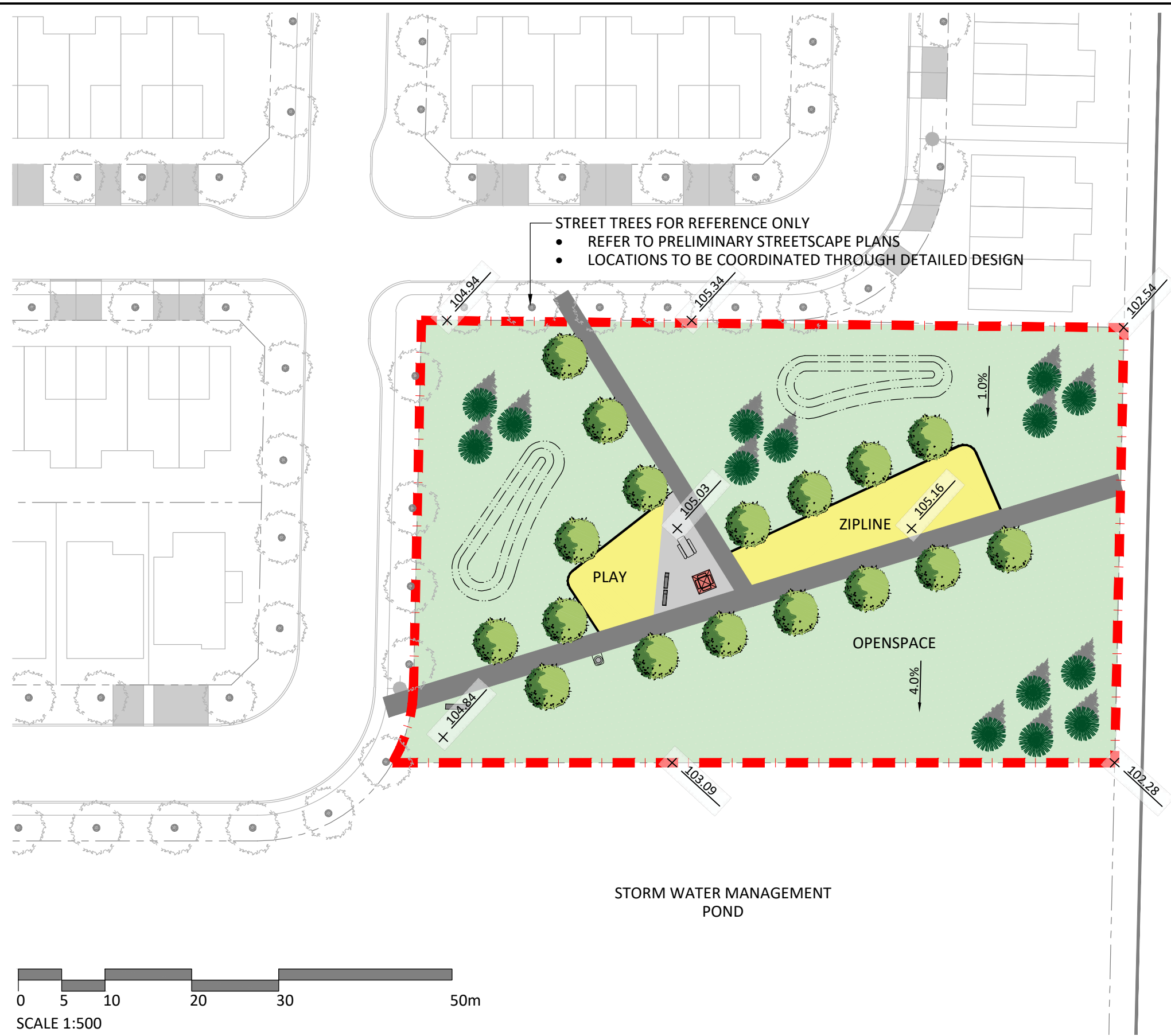
- ACCESSIBLE BENCH
- WASTE RECEPTACLE
- PICNIC TABLE
- PARK SIGN
- UMBRELLA TABLE

GRADING

- + 89.90 EX EXISTING GRADES
- + 89.90 PRELIMINARY GRADES

| PROPOSED TREE CANOPY PROJECTIONS | | | |
|--|---|---|------------------------------|
| TREE TYPE/SIZE | CROWN AREA PER TREE STANDARD RANGE (m²) | CROWN AREA PER TREE USED FOR CALC. (m²) | SITE CANOPY COVER |
| LARGE (24) | 135-250* | 192 | CANOPY (W. OVERLAP): 2,972m² |
| CONIFER (13) | 45-96* | 70 | |
| *RANGE OF CROWN AREAS IS IN ACCORDANCE WITH PROPOSED TREES SPECIES | | | SITE: 4,105m² |
| **CROWN AREAS ARE ACCORDING TO THE AVERAGE MATURE CANOPY SIZE OF THE RESPECTIVE SPECIES. CANOPY SIZING HAS BEEN DETERMINED IN REFERENCE TO VARIOUS ARBORICULTURAL AND BOTANICAL SOURCES, SUCH AS: ONTARIO MINISTRY OF NATURAL RESOURCES & FORESTRY (OMNRF); US FOREST SERVICE; FARRAR, J.L. TREES IN CANADA, UNIVERSITY OF GUELPH ABORETUM, VARIOUS PUBLICATIONS | | | TOTAL PERCENT COVER: 72.40% |

DISCLAIMER: WHILE EVERY EFFORT WILL BE MADE TO PROVIDE THE FEATURES SHOWN ON THIS PLAN, SOME REVISIONS MAY BE NECESSARY DURING DETAILED DESIGN, TENDERING AND CONSTRUCTION.



LEGEND

--- PROPERTY LINE

PLANTING

- DECIDUOUS STREET TREE
- LARGE DECIDUOUS TREE
- CONIFEROUS TREE
- SEEDING

SURFACING

- C.I.P CONCRETE
- ASPHALT PAVING
- ENGINEERED WOOD FIBER

AMENITIES

- ACCESSIBLE BENCH
- WASTE RECEPTACLE
- PICNIC TABLE
- PARK SIGN
- UMBRELLA TABLE

GRADING

- + 89.90 EX EXISTING GRADES
- + 89.90 PRELIMINARY GRADES

| PROPOSED TREE CANOPY PROJECTIONS | | | |
|--|---|---|------------------------------|
| TREE TYPE/SIZE | CROWN AREA PER TREE STANDARD RANGE (m²) | CROWN AREA PER TREE USED FOR CALC. (m²) | SITE CANOPY COVER |
| LARGE (17) | 135-250* | 192 | CANOPY (W. OVERLAP): 2,644m² |
| CONIFER (14) | 45-96* | 70 | |
| *RANGE OF CROWN AREAS IS IN ACCORDANCE WITH PROPOSED TREES SPECIES | | | SITE: 4,105m² |
| **CROWN AREAS ARE ACCORDING TO THE AVERAGE MATURE CANOPY SIZE OF THE RESPECTIVE SPECIES. CANOPY SIZING HAS BEEN DETERMINED IN REFERENCE TO VARIOUS ARBORICULTURAL AND BOTANICAL SOURCES, SUCH AS: ONTARIO MINISTRY OF NATURAL RESOURCES & FORESTRY (OMNRF); US FOREST SERVICE: FARRAR, J.L. TREES IN CANADA, UNIVERSITY OF GUELPH ABORETUM, VARIOUS PUBLICATIONS | | | TOTAL PERCENT COVER: 64.41% |

DISCLAIMER: WHILE EVERY EFFORT WILL BE MADE TO PROVIDE THE FEATURES SHOWN ON THIS PLAN, SOME REVISIONS MAY BE NECESSARY DURING DETAILED DESIGN, TENDERING AND CONSTRUCTION.

| | | |
|----------|--------------------------|----------|
| 5 | Issued for Resubmission | 25-10-31 |
| 4 | Issued for Client Review | 25-01-02 |
| 3 | Issued for Resubmission | 25-03-21 |
| 2 | Issued for Client Review | 25-02-12 |
| 1 | Issued for Client Review | 25-01-16 |
| No. | Description | Date |
| Revision | | |

