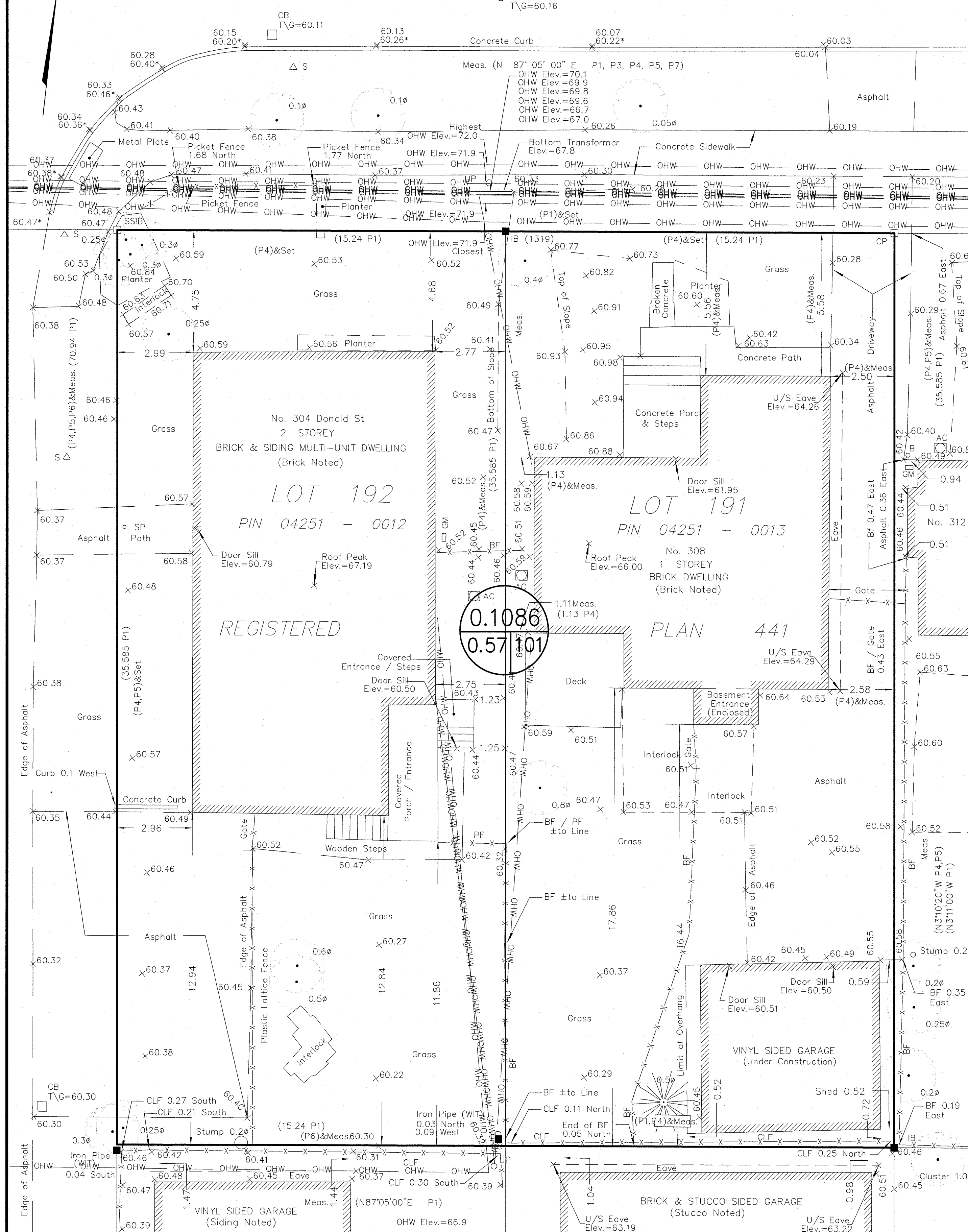


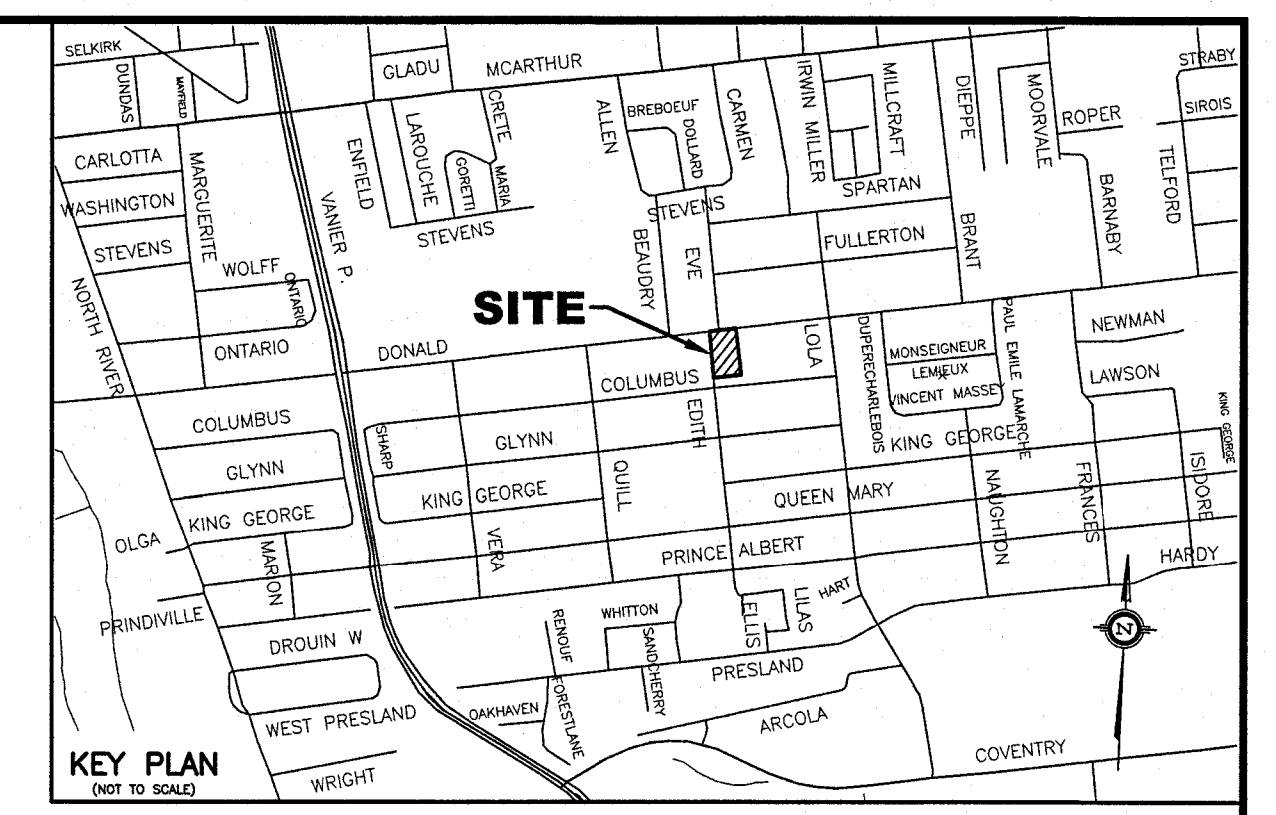
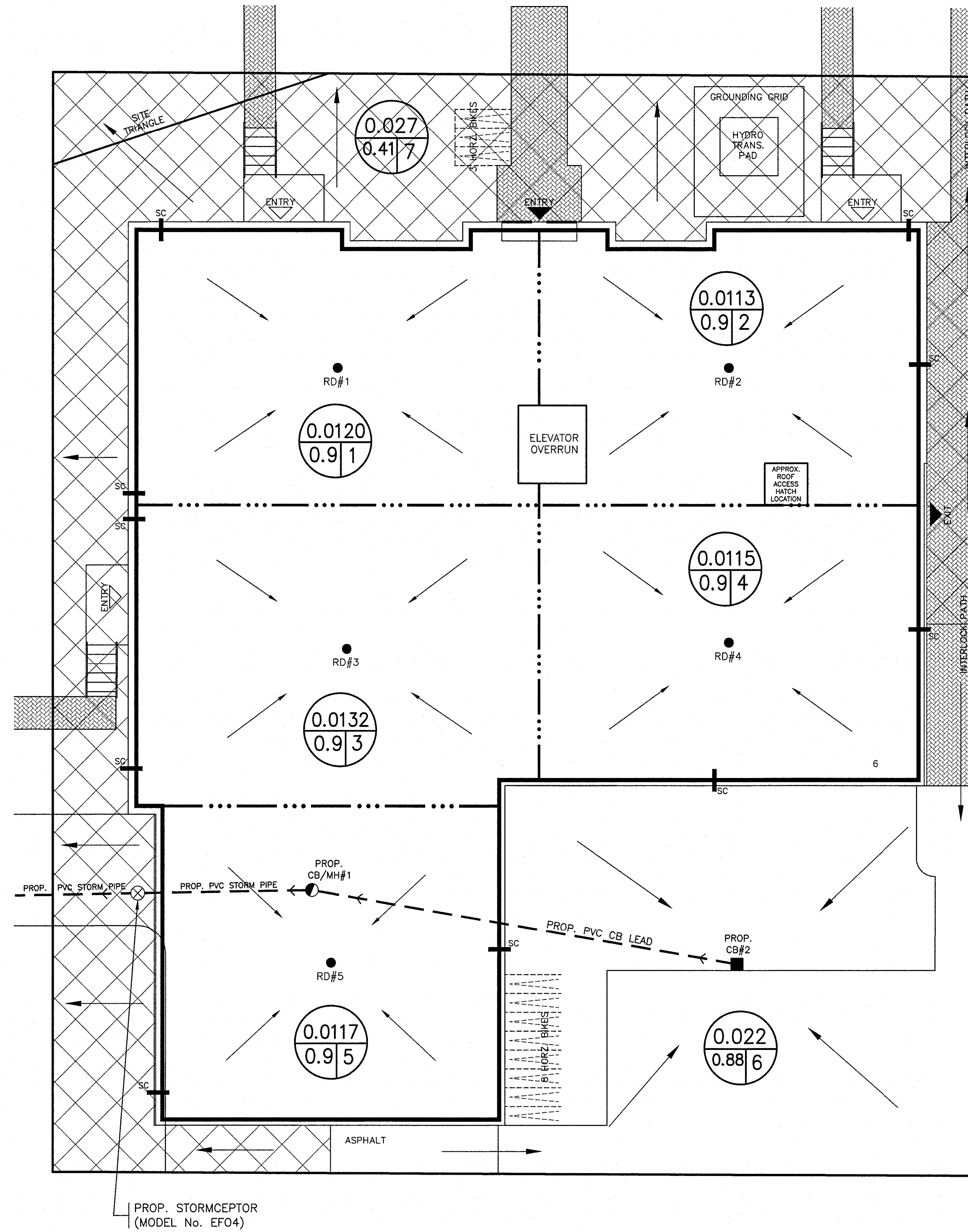
PRE - DEVELOPMENT STORM DRAINAGE AREA

DONALD STREET



POST DEVELOPMENT STORM DRAINAGE AREA

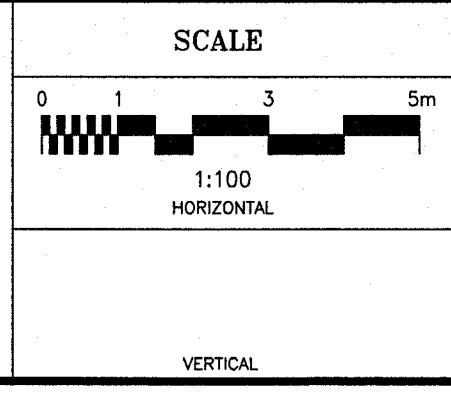
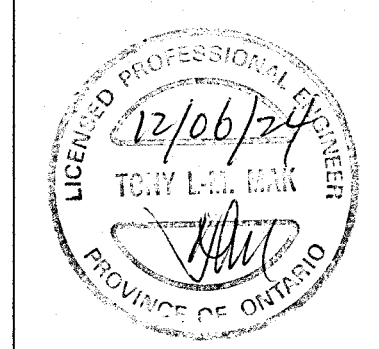
DONALD STREET



- LEGEND**
- RD#1 PROPOSED ROOF DRAIN NUMBER AND LOCATION
 - SC PROPOSED ROOF SCUPPER LOCATION
 - PROPOSED HIGH RIDGE LINE
 - 0.03 / 0.91 DRAINAGE AREA IN HECTARES / DRAINAGE NODE NUMBER
 - COEFFICIENT OF RUNOFF
 - ▨ UN-CONTROLLED DRAINAGE AREA
 - ▩ CONTROLLED DRAINAGE AREA

- NOTES**
- NODE #1, NODE #2, NODE #3, NODE #4 AND NODE #5 REPRESENTS BUILDING ROOF AREA (SWM CONTROLLED AREA) AND NODE #6 REPRESENTS REAR YARD CONTROLLED DRAINAGE AREA
 - NODE #7 REPRESENTS UNCONTROLLED DRAINAGE AREA
 - NODE #101 REPRESENTS PRE-DEVELOPMENT DATA.

No.	REVISION	DATE	BY
1	REVISIONS AS PER CITY'S REVIEW COMMENTS OF NOV. 6, 2024 AND ARCHITECTS REVISED SITE PLAN PROVIDED ON NOV. 26, 2024 AND DEC. 4, 2024	12/06/24	TLM



DESIGN	T.L.M.
CHECKED	T.L.M.
DRAWN BY	P.M.
CHECKED	T.L.M.
APPROVED	T.L.M.

PROJECT
304-308 DONALD STREET
 LOTS 191 AND 192
 REGISTERED PLAN 441
 CITY OF OTTAWA

DRAWING TITLE
STORM DRAINAGE AREA PLAN

<p>T.L. MAK ENGINEERING CONSULTANTS LTD. CONSULTING ENGINEERS</p>	
PROJECT No.	DATE
824-63	APRIL 2024
DRAWING No.	
D-1	

D07-12-24-0088
#19153