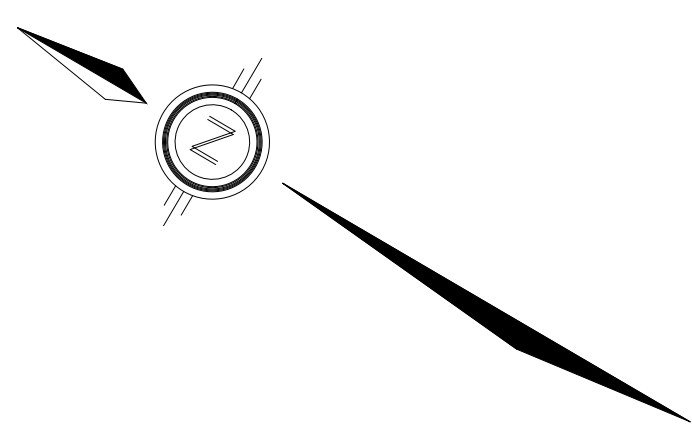
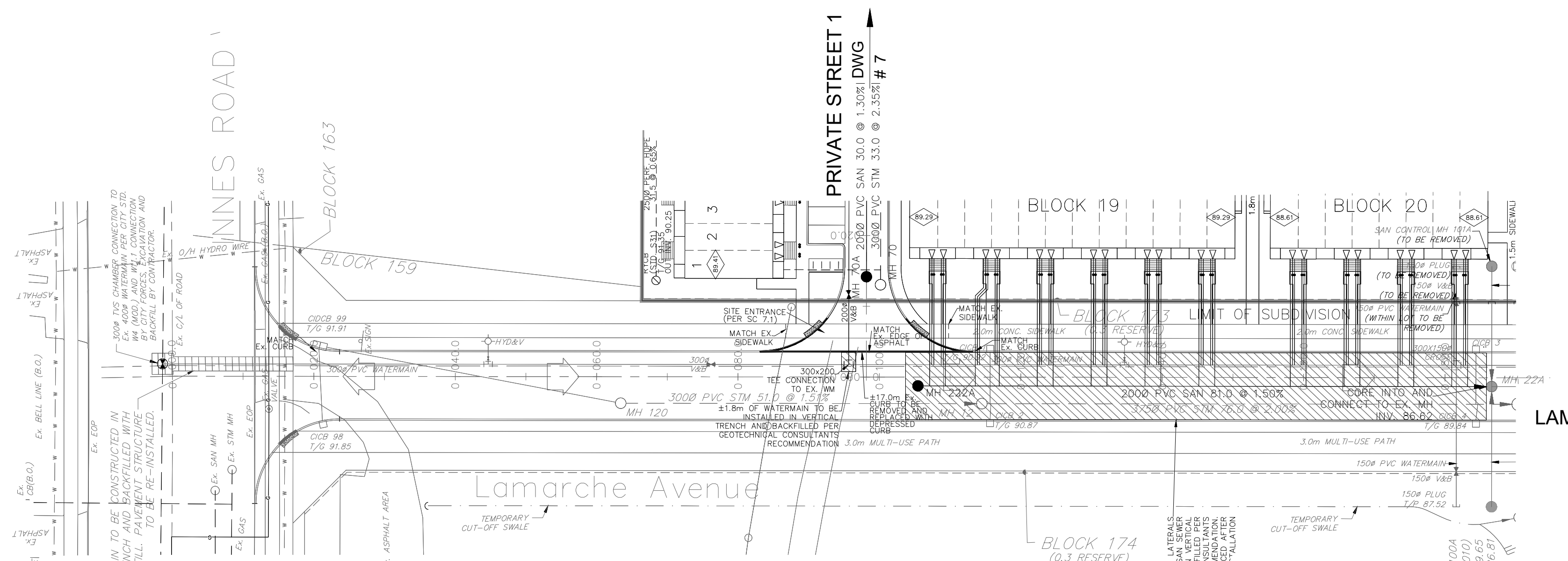


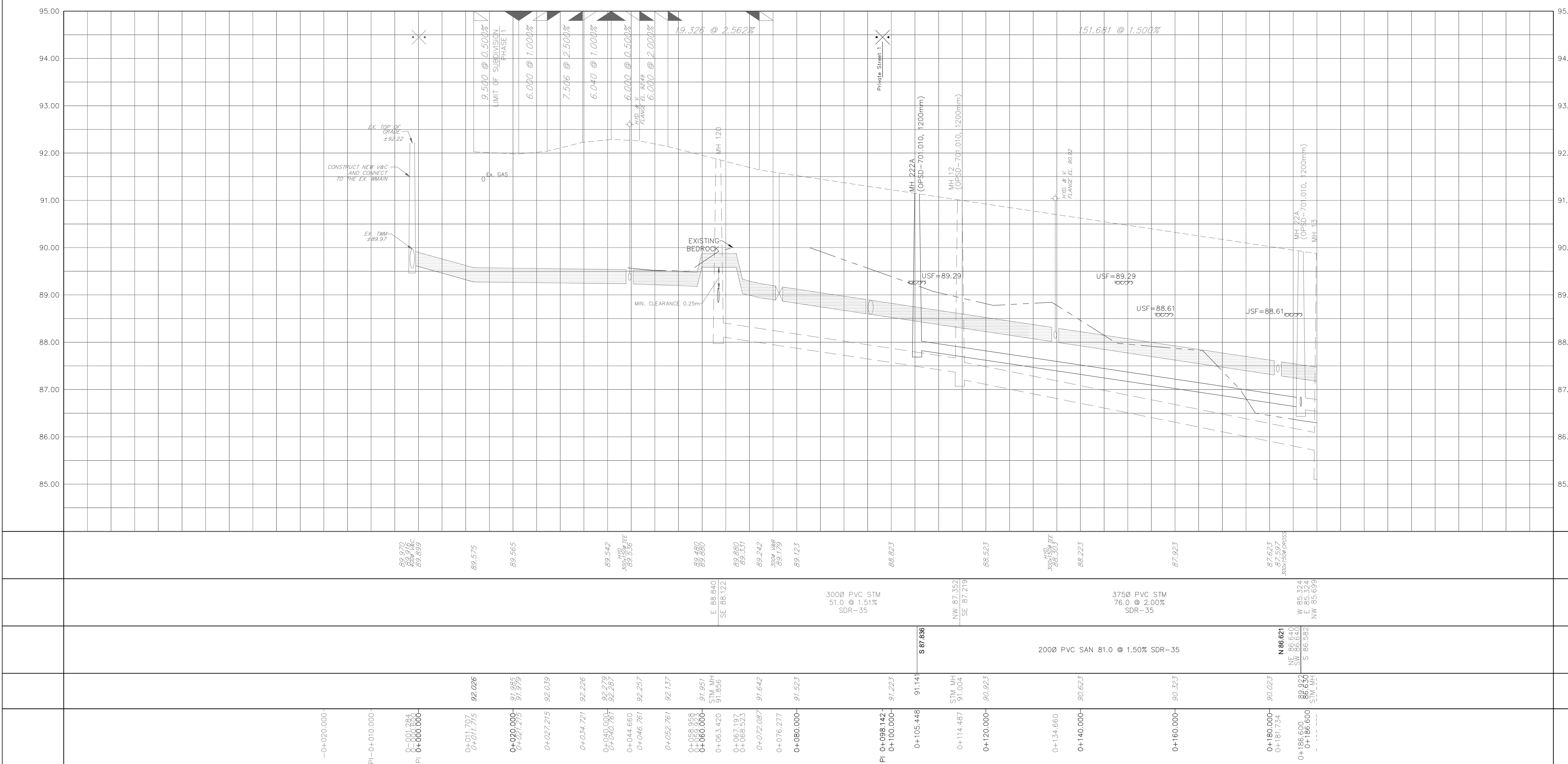
NOTES:

1. ANY DISTURBED AREA DURING CONSTRUCTION TO BE RESTORED TO THE ORIGINAL CONDITION OR BETTER TO THE SATISFACTION OF THE AUTHORITIES HAVING JURISDICTION.
2. CONTRACTOR TO VERIFY THE PRECISE LOCATIONS AND INVERT ELEVATIONS OF EX. UNDERGROUND SERVICES AND EX. UTILITIES PRIOR TO STARTING CONSTRUCTION.
3. ALL EXISTING TREES, SHRUBS ETC. WITHIN LOTS, BLOCKS AND ROADS TO BE REMOVED, UNLESS OTHERWISE NOTED.
4. PERMISSION REQUIRED FOR WORK ON ADJACENT LANDS.
5. FOR WATERMAIN STUBS, 2.4m MIN. COVER TO BE PROVIDED.
6. ANY DISTURBED MATERIAL ENCOUNTERED BELOW THE SUBGRADE LEVEL WITHIN A BUILDING FOOTPRINT TO BE SUB-EXCAVATED AND BACKFILLED WITH COMPACTED ENGINEERED FILL AS PER GEOTECHNICAL ENGINEERS RECOMMENDATION.
7. FOR CATCHBASIN DATA, REFER TO DWG. No. 2 FOR DETAILS.
8. ALL DWELLINGS TO BE PROVIDED WITH PRESSURE REDUCING VALVES UNLESS OTHERWISE NOTED.



LEGEND

CROSS	BIKE RACK	AS PER GEOTECHNICAL REPORT
45° BEND	EARTHEN (DWG. 3 FOR DETAILS)	CONCEPTUAL WELL LOCATION
LATERAL	STREET LIGHT STANDARD	TOP OF FOUNDATION ELEVATION
HYDRANT, VALVE & VB	CONCRETE SIDEWALK	FINISHED FLOOR ELEVATION
TEE	CURB & RECESSED CURB	UNDERSIDE OF FOOTING ELEVATION
VALVE & VC	ASPHALT SIDEWALK	NUMBER OF RISERS
VALVE & VB	CHAINLINK FENCE (1.5m UNLESS OTHERWISE NOTED)	UNITS REQUIRING PRESSURE
22.5° BEND	NOISE BARRIER (2.2m)	REDUCING VALVES
REDUCER	WOODEN POST AND RAIL FENCE	WALKOUT UNITS
CAP	CONSTRUCTION FENCE	SLAB ON GRADE
SANITARY MAINTENANCE HOLE	POST AND RAIL FENCE	OVERLAND FLOW DIRECTION
CAP	PHASING LIMITS	EXTERNAL OVERLAND FLOW DIRECTION
STREET CATCHBASIN & LEAD	PROPERTY BOUNDARY	EMERGENCY OVERLAND FLOW DIRECTION
INTERCONNECTED CATCHBASIN/ MAINTENANCE HOLE	BOREHOLE (BH)	TACTILE WALKING SURFACE INDICATOR (AS PER CITY OF OTTAWA STD. SC6, SC7, SC7.1, SC7.2, SC7.3)
CATCH BASIN & LEADS	TEST PIT (TP)	PREVIOUS PHASES
TEE CATCHBASIN	AUGER HOLE (AH)	
PERFORATED PIPE	MONITORING WELL LOCATION	
ELBOW CATCHBASIN	CONCEPTUAL WELL LOCATION	
DITCH AND CULVERT	TOP OF FOUNDATION ELEVATION	
36.0m-250# INFILTRATION TRENCH (TYP.), SEE DETAIL ON DRAWING 4.	FINISHED FLOOR ELEVATION	
HYDRO TRANSFORMER	UNDERSIDE OF FOOTING ELEVATION	
RETAINING WALL (SEE NOTES ON DWG. 1 AND STRUCTURAL DWG'S FOR DETAIL)	NUMBER OF RISERS	
	UNITS REQUIRING PRESSURE	
	REDUCING VALVES	
	WALKOUT UNITS	
	SLAB ON GRADE	
	OVERLAND FLOW DIRECTION	
	EXTERNAL OVERLAND FLOW DIRECTION	
	EMERGENCY OVERLAND FLOW DIRECTION	
	TACTILE WALKING SURFACE INDICATOR (AS PER CITY OF OTTAWA STD. SC6, SC7, SC7.1, SC7.2, SC7.3)	
	PREVIOUS PHASES	



NOT FOR CONSTRUCTION

TOPOGRAPHIC INFORMATION
 TOPOGRAPHIC INFORMATION PROVIDED BY J.D. BARNES LIMITED
 PROJECT No. 16-10-116-00, SURVEYS DATED NOVEMBER 30, 2017.
 PROJECT No. 16-10-116-00_PH2, SURVEYS DATED SEPTEMBER 27, 2019.
 PROJECT No. 22-10-030-01, SURVEYS DATED JUNE 21, 2023.

SITE PLAN INFORMATION
 SITE PLAN PROVIDED BY Q4 ARCHITECTS, DATED ON AUGUST 6, 2024.

ELEVATION NOTE
 ELEVATIONS ARE GEODETIC AND ARE DERIVED FROM SITE BENCHMARK NCC CONTROL POINT 001196530229.
ELEVATION = 86.12 m

No.	BY	DATE	DESCRIPTION
1	S.L.M.	2024-08-30	1st SUBMISSION

CITY OF OTTAWA

LAMARCHE AVENUE

PROJECT No. 24-1403

L. L. MERRICK
 LICENSED PROFESSIONAL ENGINEER
 100186523
 2024-08-30
 PROVINCE OF ONTARIO

CAIVAN (ORLEANS VILLAGE 2) LTD.

ORLEANS VILLAGE PHASE 4

DSEL

120 Ibor Road, Unit 103
 Stittsville, ON K2S 1E9
 Tel: (613) 836-0856
 Fax: (613) 836-7183
 www.DSEL.ca

LAMARCHE AVENUE

STA. 0+10.000 TO STA. 0+190.000

DRAWN BY:	C.P.B.	CHECKED BY:	S.L.M.	SHEET NO.
DESIGNED BY:	C.P.B.	CHECKED BY:	S.L.M.	17 OF 25
SCALE:	1:500	DATE:	AUGUST 2024	

CITY PLAN No. ###
 CITY FILE No. ###