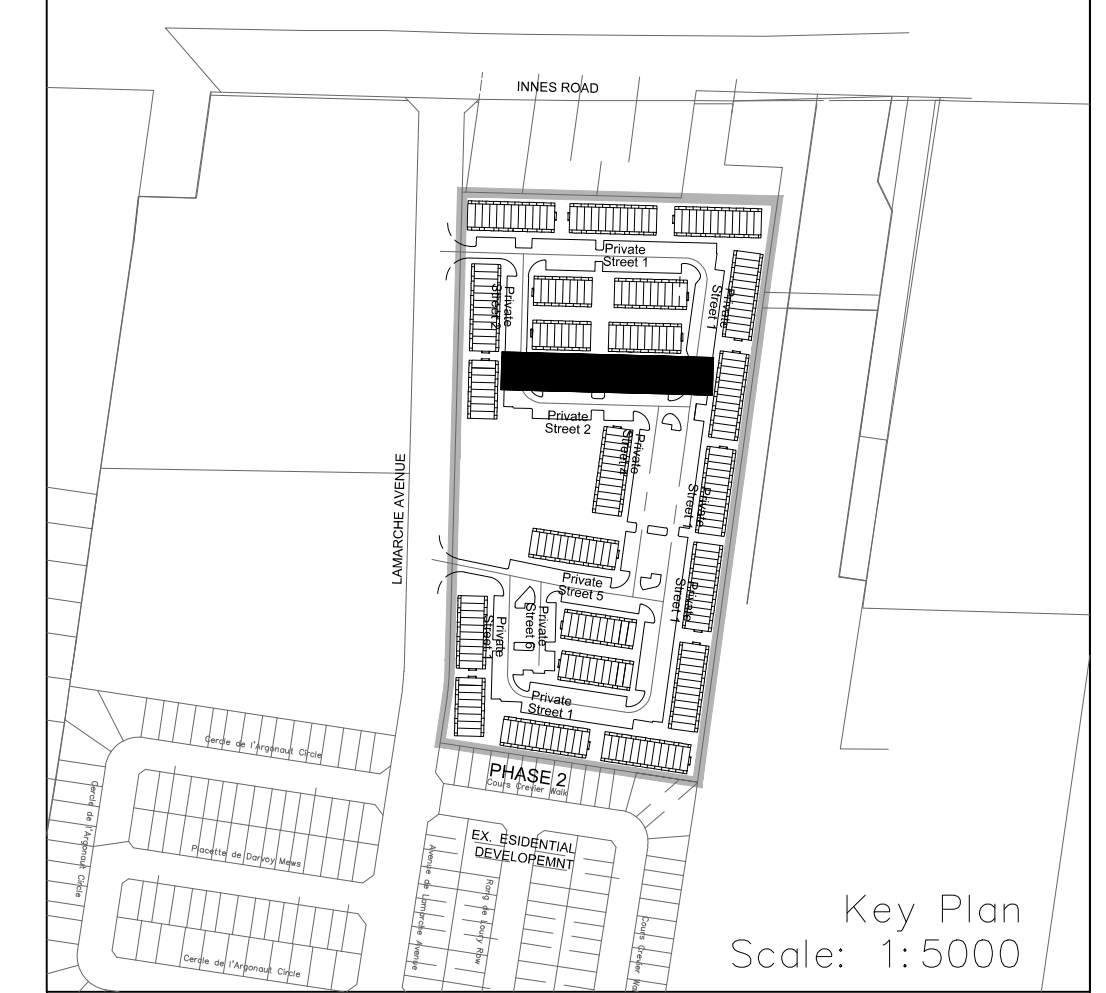
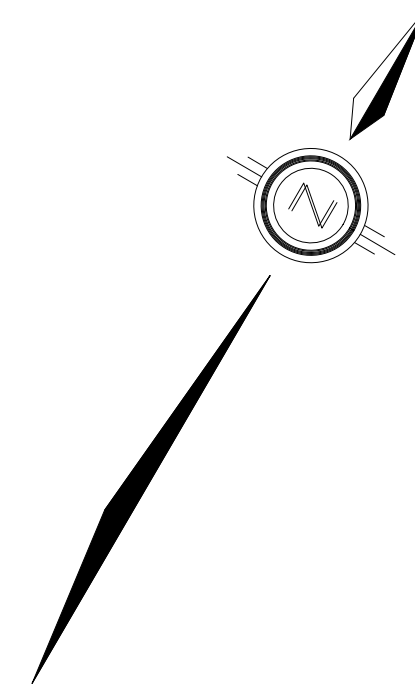
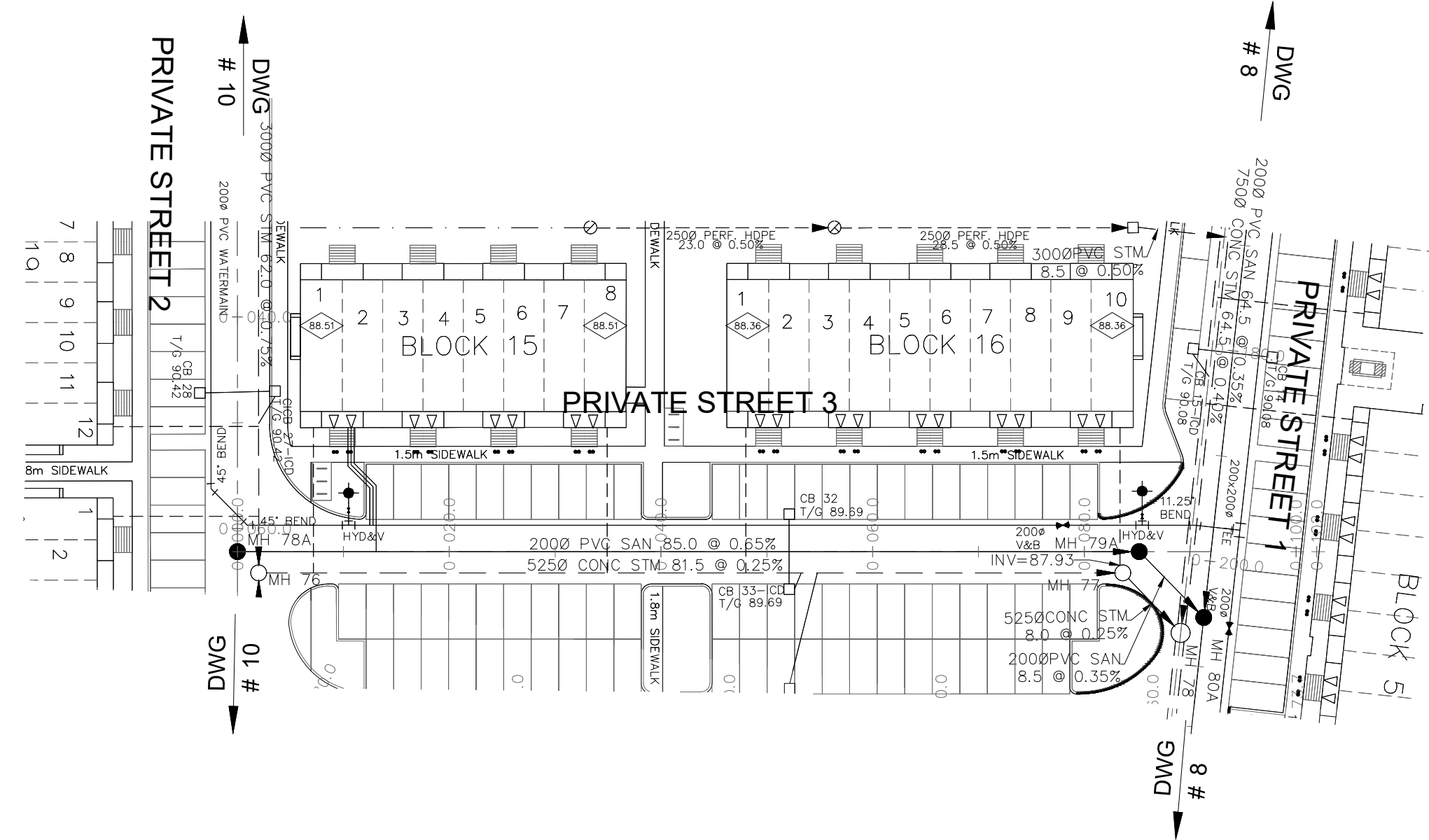


**NOTES:**

1. ANY DISTURBED AREA DURING CONSTRUCTION TO BE RESTORED TO THE ORIGINAL CONDITION OR BETTER TO THE SATISFACTION OF THE AUTHORITIES HAVING JURISDICTION.
2. CONTRACTOR TO VERIFY THE PRECISE LOCATIONS AND INVERT ELEVATIONS OF EX. UNDERGROUND SERVICES AND EX. UTILITIES PRIOR TO STARTING CONSTRUCTION.
3. ALL EXISTING TREES, SHRUBS ETC. WITHIN LOTS, BLOCKS AND ROADS TO BE REMOVED, UNLESS OTHERWISE NOTED.
4. PERMISSION REQUIRED FOR WORK ON ADJACENT LANDS.
5. FOR WATERMAIN STUBS, 2.4m MIN. COVER TO BE PROVIDED.
6. ANY DISTURBED MATERIAL ENCOUNTERED BELOW THE SUBGRADE LEVEL WITHIN A BUILDING FOOTPRINT TO BE SUB-EXCAVATED AND BACKFILLED WITH COMPACTED ENGINEERED FILL AS PER GEOTECHNICAL ENGINEERS RECOMMENDATION.
7. FOR CATCHBASIN DATA, REFER TO DWG. No. 2 FOR DETAILS.
8. ALL DWELLINGS TO BE PROVIDED WITH PRESSURE REDUCING VALVES UNLESS OTHERWISE NOTED.



**LEGEND**

CROSS	BIKE RACK	EARTHEN (DWG. 3 FOR DETAILS)
45° BEND	STREET LIGHT STANDARD	CONCRETE SIDEWALK
LATERAL	CURB & RECESSED CURB	ASPHALT SIDEWALK
HYDRANT, VALVE & VB	CHAINLINK FENCE (1.5m UNLESS OTHERWISE NOTED)	WOODEN POST AND RAIL FENCE
TEE	NOISE BARRIER (2.2m)	CONSTRUCTION FENCE
VALVE & VC	WOODEN POST AND RAIL FENCE	POST AND RAIL FENCE
VALVE & VB	CONSTRUCTION FENCE	PHASING LIMITS
22.5° BEND	PROPERTY BOUNDARY	BOREHOLE (BH)
11.25° BEND	TEST PIT (TP)	AUGER HOLE (AH)
REDUCER	MONITORING WELL LOCATION	CONCEPTUAL WELL LOCATION
CAP	TOP OF FOUNDATION ELEVATION	FINISHED FLOOR ELEVATION
SANITARY MAINTENANCE HOLE	UNDERSIDE OF FOOTING ELEVATION	NUMBER OF RISERS
CAP	UNITS REQUIRING PRESSURE REDUCING VALVES	WALK-OUT UNITS
STREET CATCHBASIN & LEAD	SLAB ON GRADE	OVERLAND FLOW DIRECTION
INLET CATCHBASIN WITH CLOSED LID & LEAD	EXTERNAL OVERLAND FLOW DIRECTION	EMERGENCY OVERLAND FLOW DIRECTION
STORM MAINTENANCE HOLE	AS PER CITY OF OTTAWA STD. SC6, SC7, SC7.1, SC7.2, SC7.3	PREVIOUS PHASES
CURB INLET CATCHBASIN & LEAD	PREVIOUS PHASES	
CATCHBASIN/ MAINTENANCE HOLE INTERCONNECTED		
CATCH BASIN & LEADS		
CAP		
CURB STOP		
SINGLE SERVICE LOCATION (ST, SAN & WM)		
TEE CATCHBASIN		
PERFORATED PIPE		
ELBOW CATCHBASIN		
DITCH AND CULVERT		
36.0m-250# INFILTRATION TRENCH (TYP.), SEE DETAIL ON DRAWING 4.		
HYDRO TRANSFORMER		
RETAINING WALL (SEE NOTES ON DWG. 1 AND STRUCTURAL DWG'S FOR DETAIL)		


**NOT FOR CONSTRUCTION**

**TOPOGRAPHIC INFORMATION**  
 TOPOGRAPHIC INFORMATION PROVIDED BY J.D. BARNES LIMITED  
 PROJECT No. 16-10-116-00, SURVEYS DATED NOVEMBER 30, 2017.  
 PROJECT No. 16-10-116-00\_P12, SURVEYS DATED SEPTEMBER 27, 2019.  
 PROJECT No. 22-10-030-01, SURVEYS DATED JUNE 21, 2023.

**SITE PLAN INFORMATION**  
 SITE PLAN PROVIDED BY Q4 ARCHITECTS, DATED ON AUGUST 6, 2024.

**ELEVATION NOTE**  
 ELEVATIONS ARE GEODETIC AND ARE DERIVED FROM SITE BENCHMARK NCC CONTROL POINT 001196530229.  
**ELEVATION = 86.12 m**

1	S.L.M.	2024-08-30	1st SUBMISSION
No.	BY	DATE	DESCRIPTION



**CITY OF OTTAWA**



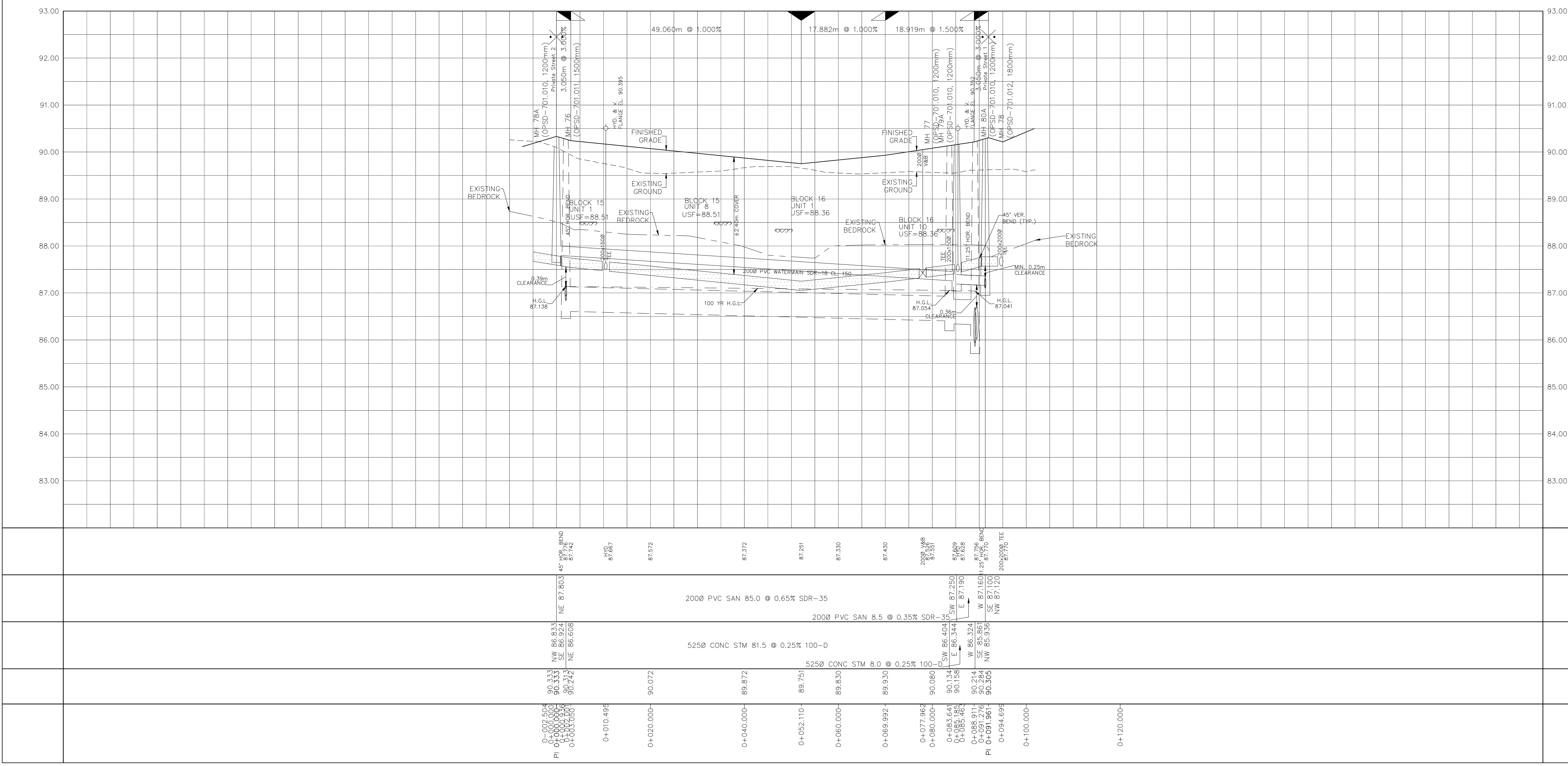
PROJECT No. 24-1403

**CAIVAN (ORLEANS VILLAGE 2) LTD.**      **ORLEANS VILLAGE PHASE 4**



**Private Street 3**      © DSEL  
 STA. 0+10.000 TO STA. 0+101.961

DRAWN BY: C.P.B.	CHECKED BY: S.L.M.	SHEET No.
DESIGNED BY: C.P.B.	CHECKED BY: S.L.M.	11 OF 25
SCALE: 1:500	DATE: AUGUST 2024	



CITY PLAN No. ####      CITY FILE No. ####