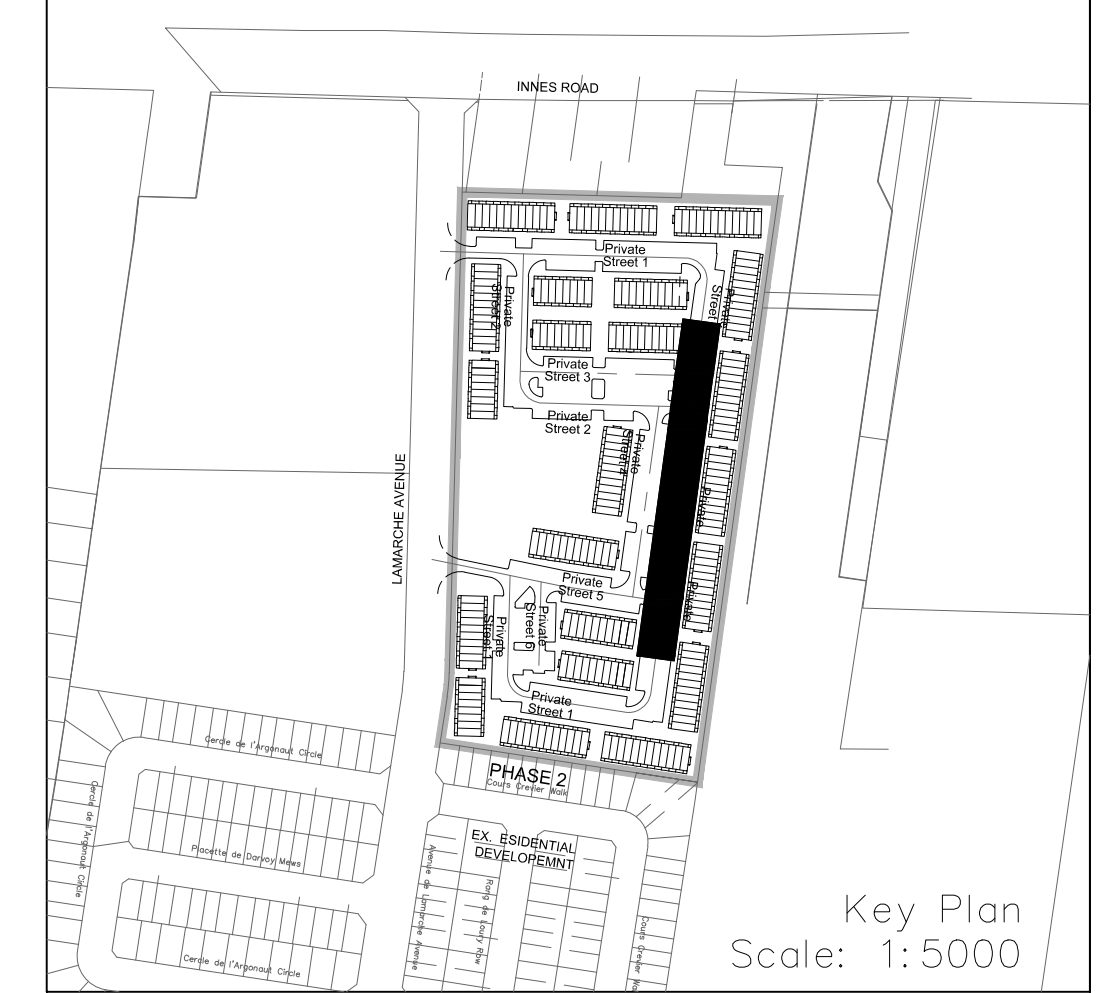
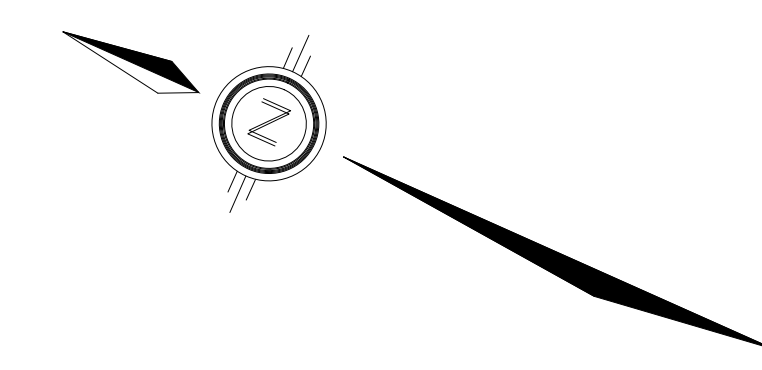
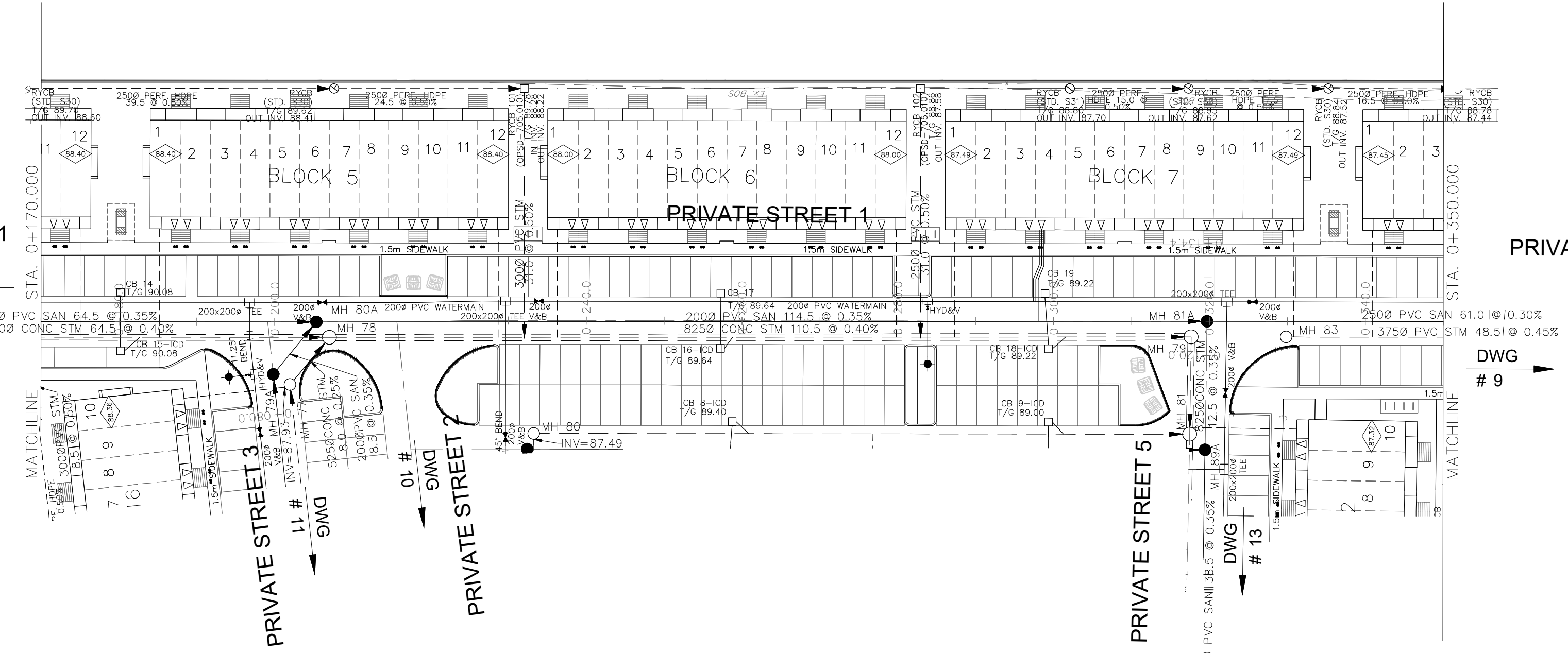


NOTES:

1. ANY DISTURBED AREA DURING CONSTRUCTION TO BE RESTORED TO THE ORIGINAL CONDITION OR BETTER TO THE SATISFACTION OF THE AUTHORITIES HAVING JURISDICTION. CONTRACTOR TO VERIFY THE PRECISE LOCATIONS AND INVERT ELEVATIONS OF EX. UNDERGROUND SERVICES AND EX. UTILITIES PRIOR TO STARTING CONSTRUCTION.
2. ALL EXISTING TREES, SHRUBS ETC. WITHIN LOTS, BLOCKS AND ROADS TO BE REMOVED, UNLESS OTHERWISE NOTED.
3. PERMISSION REQUIRED FOR WORK ON ADJACENT LANDS.
4. FOR WATERMAIN STUBS, 2.4m MIN. COVER TO BE PROVIDED.
5. ANY DISTURBED MATERIAL ENCOUNTERED BELOW THE SUBGRADE LEVEL WITHIN A BUILDING FOOTPRINT TO BE SUB-EXCAVATED AND BACKFILLED WITH COMPACTED ENGINEERED FILL AS PER GEOTECHNICAL ENGINEERS RECOMMENDATION.
6. FOR CATCHBASIN DATA, REFER TO DWG. No. 2 FOR DETAILS.
7. ALL DWELLINGS TO BE PROVIDED WITH PRESSURE REDUCING VALVES UNLESS OTHERWISE NOTED.

PRIVATE STREET 1
DWG # 7

PRIVATE STREET 1
DWG # 9



LEGEND

CROSS	BIKE RACK	CONCRETE SIDEWALK	CONSTRUCTION FENCE
45° BEND	EARTHIN (DWG. 3 FOR DETAILS)	CURB & RECESSED CURB	POST AND RAIL FENCE
LATERAL	STREET LIGHT STANDARD	ASPHALT SIDEWALK	PHASING LIMITS
HYDRANT, VALVE & VB	CONCRETE SIDEWALK	CHALKLINE FENCE (1.5m UNLESS OTHERWISE NOTED)	PROPERTY BOUNDARY
TEE	CURB & RECESSED CURB	NOISE BARRIER (2.2m)	BOREHOLE (BH)
VALVE & VC	ASPHALT SIDEWALK	WOODEN POST AND RAIL FENCE	TEST PIT (TP)
VALVE & VB	CHALKLINE FENCE (1.5m UNLESS OTHERWISE NOTED)	CONSTRUCTION FENCE	AUGER HOLE (AH)
22.5° BEND	NOISE BARRIER (2.2m)	POST AND RAIL FENCE	MONITORING WELL LOCATION
11.25° BEND	WOODEN POST AND RAIL FENCE	CONSTRUCTION FENCE	CONCEPTUAL WELL LOCATION
REDUCER	CONSTRUCTION FENCE	PROPERTY BOUNDARY	TOP OF FOUNDATION ELEVATION
CAP	PROPERTY BOUNDARY	BOREHOLE (BH)	FINISHED FLOOR ELEVATION
SANITARY MAINTENANCE HOLE	BOREHOLE (BH)	TEST PIT (TP)	UNDERSIDE OF FOOTING ELEVATION
STREET CATCHBASIN & LEAD	TEST PIT (TP)	AUGER HOLE (AH)	NUMBER OF RISERS
INTERCONNECTED CATCHBASIN/ MAINTENANCE HOLE	AUGER HOLE (AH)	MONITORING WELL LOCATION	UNITS REQUIRING PRESSURE
CATCH BASIN & LEADS	MONITORING WELL LOCATION	CONCEPTUAL WELL LOCATION	REDUCING VALVES
INTERCONNECTED CATCH BASIN & LEADS	CONCEPTUAL WELL LOCATION	TOP OF FOUNDATION ELEVATION	WALK-OUT UNITS
CAP	TOP OF FOUNDATION ELEVATION	FINISHED FLOOR ELEVATION	SLAB ON GRADE
CURB STOP	FINISHED FLOOR ELEVATION	UNDERSIDE OF FOOTING ELEVATION	OVERLAND FLOW DIRECTION
SINGLE SERVICE LOCATION (ST, SAN & WM)	UNDERSIDE OF FOOTING ELEVATION	NUMBER OF RISERS	EXTERNAL OVERLAND FLOW DIRECTION
TEE CATCHBASIN	NUMBER OF RISERS	UNITS REQUIRING PRESSURE	EMERGENCY OVERLAND FLOW DIRECTION
PERFORATED PIPE	UNITS REQUIRING PRESSURE	REDUCING VALVES	TACTILE WALKING SURFACE INDICATOR
ELBOW CATCHBASIN	REDUCING VALVES	WALK-OUT UNITS	(AS PER CITY OF OTTAWA STD. SC6, SC7, SC7.1, SC7.2, SC7.3)
DITCH AND CULVERT	WALK-OUT UNITS	SLAB ON GRADE	PREVIOUS PHASES
36.0m-250# INFILTRATION TRENCH (TYP.), SEE DETAIL ON DRAWING 4.	SLAB ON GRADE	OVERLAND FLOW DIRECTION	EXISTING SANITARY MAINTENANCE HOLE
HYDRO TRANSFORMER	OVERLAND FLOW DIRECTION	EXTERNAL OVERLAND FLOW DIRECTION	EXISTING STORM MAINTENANCE HOLE
RETAINING WALL (SEE NOTES ON DWG. 1 AND STRUCTURAL DWG'S FOR DETAIL)	EXTERNAL OVERLAND FLOW DIRECTION	EMERGENCY OVERLAND FLOW DIRECTION	GROUNDWATER LEVEL PER PATERSON GROUP DWG. P0009-10

NOT FOR CONSTRUCTION

TOPOGRAPHIC INFORMATION
 TOPOGRAPHIC INFORMATION PROVIDED BY J.D. BARNES LIMITED
 PROJECT No. 16-10-116-00, SURVEYS DATED NOVEMBER 30, 2017.
 PROJECT No. 16-10-116-00_PH2, SURVEYS DATED SEPTEMBER 27, 2019.
 PROJECT No. 22-10-030-01, SURVEYS DATED JUNE 21, 2023.

SITE PLAN INFORMATION
 SITE PLAN PROVIDED BY Q4 ARCHITECTS, DATED ON AUGUST 6, 2024.

ELEVATION NOTE
 ELEVATIONS ARE GEODETIC AND ARE DERIVED FROM SITE BENCHMARK NCC CONTROL POINT 001196530229.
 ELEVATION = 86.12 m

No.	BY	DATE	DESCRIPTION
1	S.L.M.	2024-08-30	1st SUBMISSION



CITY OF OTTAWA



PROJECT No. 24-1403

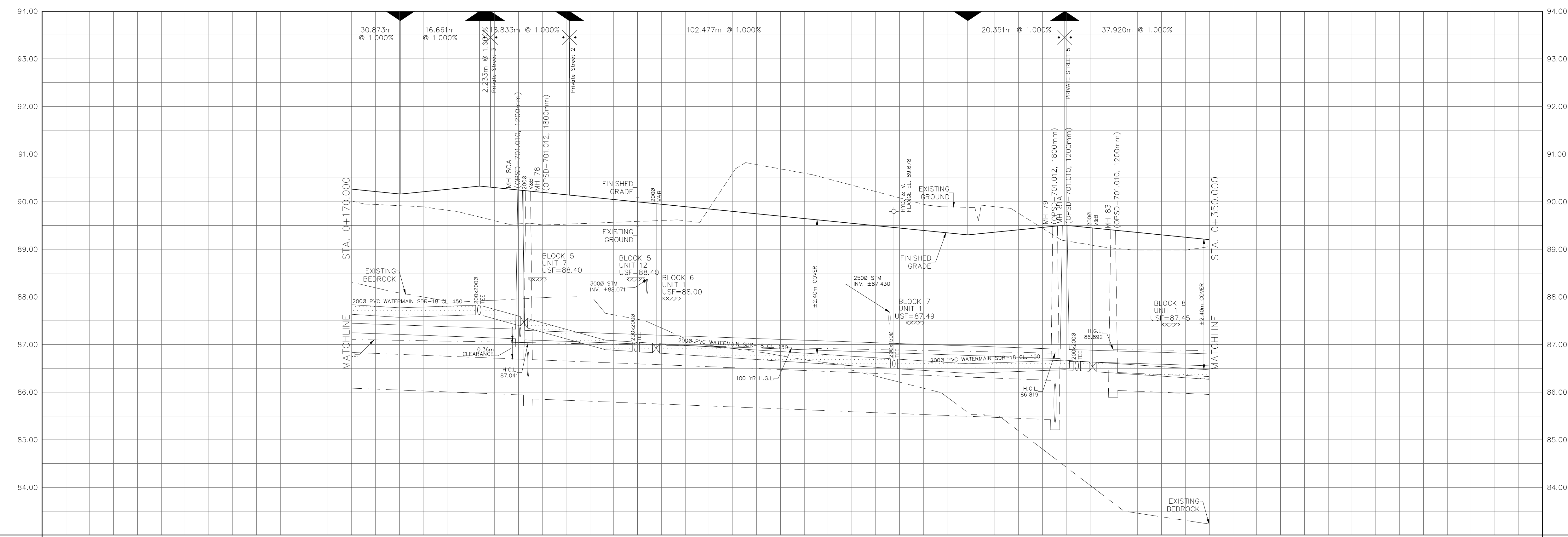
CAIVAN (ORLEANS VILLAGE 2) LTD. ORLEANS VILLAGE PHASE 4



120 Iber Road, Unit 103
 Stittsville, ON K2S 1E9
 Tel: (613) 836-0856
 Fax: (613) 836-7183
 www.DSEL.ca

Private Street 1 © DSEL
 STA. 0+170.000 TO STA. 0+350.000

DRAWN BY: C.P.B.	CHECKED BY: S.L.M.	SHEET NO.
DESIGNED BY: C.P.B.	CHECKED BY: S.L.M.	8 OF 25
SCALE: 1:500	DATE: AUGUST 2024	



87.71	2000 PVC SAN 64.5 @ 0.35% SDR-35	87.738	2000 PVC SAN 114.5 @ 0.35% SDR-35	88.052	2500 PVC SAN 61.0 @ 0.30% SDR-35	88.335
90.327	7500 CONC STM 64.5 @ 0.40% 100-D	90.256	8250 CONC STM 110.5 @ 0.40% 100-D	89.496	3750 PVC STM 48.5 @ 0.45% SDR-35	89.303
90.139		89.696		89.496		89.303
90.119		89.696		89.496		89.303
90.096		89.696		89.496		89.303
90.072		89.696		89.496		89.303
90.030		89.696		89.496		89.303
89.896		89.696		89.496		89.303
89.696		89.696		89.496		89.303
89.496		89.696		89.496		89.303
89.303		89.696		89.496		89.303
89.163		89.696		89.496		89.303

CITY PLAN No. ###

CITY FILE No. ###