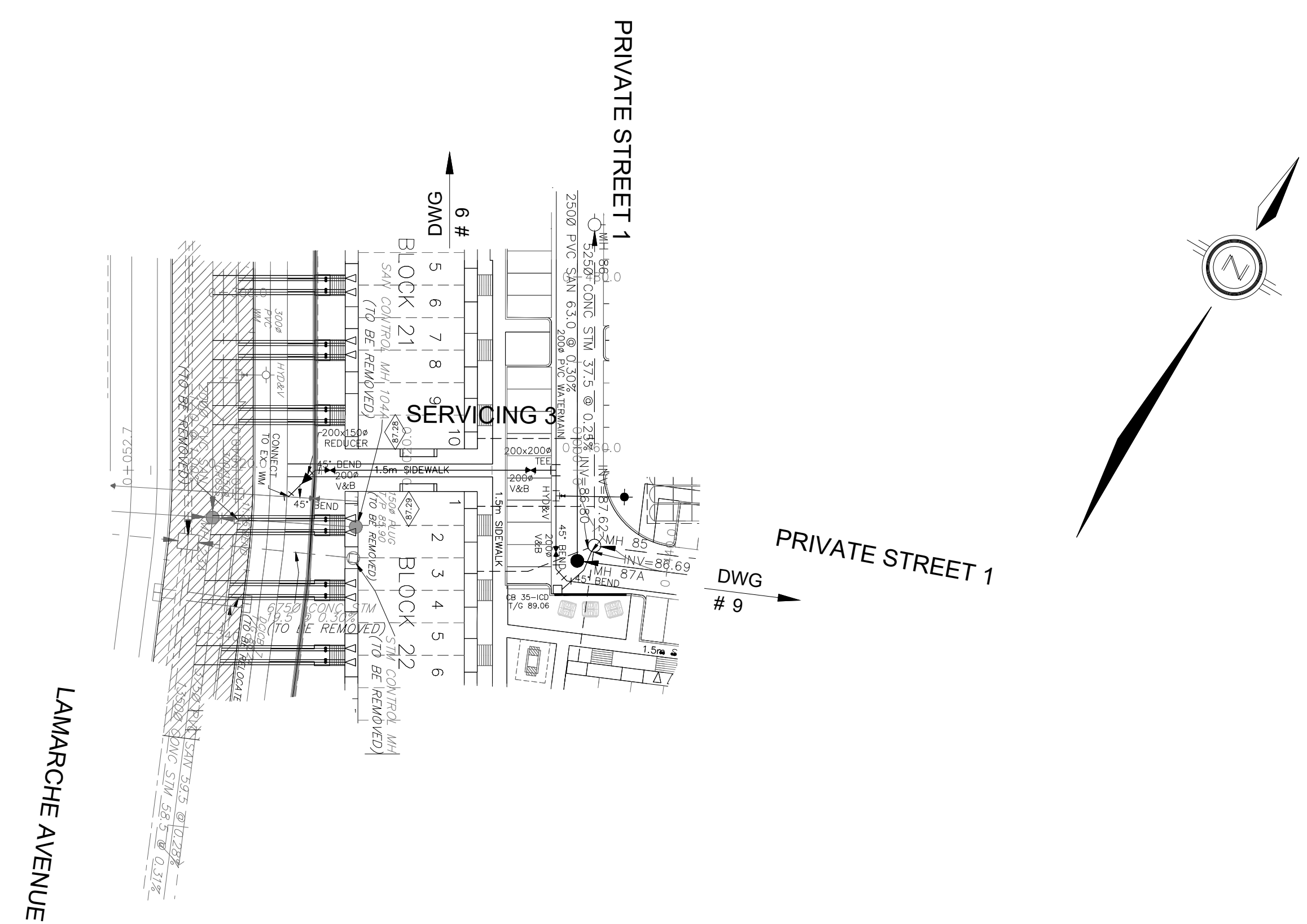


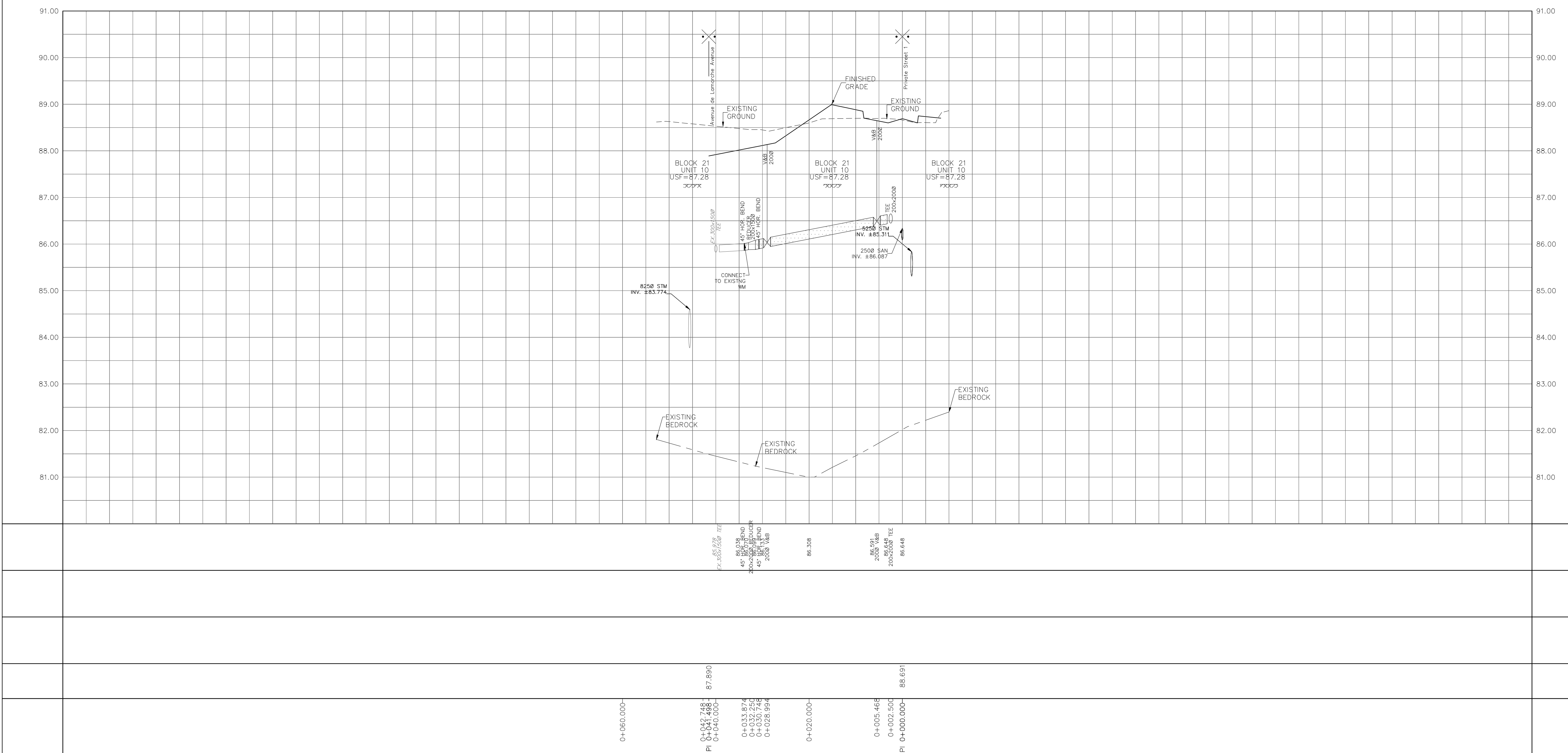
NOTES:

1. ANY DISTURBED AREA DURING CONSTRUCTION TO BE RESTORED TO THE ORIGINAL CONDITION OR BETTER TO THE SATISFACTION OF THE AUTHORITIES HAVING JURISDICTION.
2. CONTRACTOR TO VERIFY THE PRECISE LOCATIONS AND INVERT ELEVATIONS OF EX. UNDERGROUND SERVICES AND EX. UTILITIES PRIOR TO STARTING CONSTRUCTION.
3. ALL EXISTING TREES, SHRUBS ETC. WITHIN LOTS, BLOCKS AND ROADS TO BE REMOVED, UNLESS OTHERWISE NOTED.
4. PERMISSION REQUIRED FOR WORK ON ADJACENT LANDS.
5. FOR WATERMAIN STUBS, 2.4m MIN. COVER TO BE PROVIDED.
6. ANY DISTURBED MATERIAL ENCOUNTERED BELOW THE SUBGRADE LEVEL WITHIN A BUILDING FOOTPRINT TO BE SUB-EXCAVATED AND BACKFILLED WITH COMPACTED ENGINEERED FILL AS PER GEOTECHNICAL ENGINEERS RECOMMENDATION.
7. FOR CATCHBASIN DATA, REFER TO DWG. No. 2 FOR DETAILS.
8. ALL DWELLINGS TO BE PROVIDED WITH PRESSURE REDUCING VALVES UNLESS OTHERWISE NOTED.



LEGEND

CROSS	BIKE RACK	EARTHEN (DWG. 3 FOR DETAILS)
45° BEND	STREET LIGHT STANDARD	CONCRETE SIDEWALK
LATERAL	CURB & RECESSED CURB	ASPHALT SIDEWALK
HYDRANT, VALVE & VB	CHAINLINK FENCE (1.5m UNLESS OTHERWISE NOTED)	NOISE BARRIER (2.2m)
TEE	WOODEN POST AND RAIL FENCE	CONSTRUCTION FENCE
VALVE & VC	POST AND RAIL FENCE	PROPERTY BOUNDARY
VALVE & VB	PHASING LIMITS	PROPERTY BOUNDARY BOREHOLE (BH)
22.5° BEND	PHASING LIMITS	TEST PIT (TP)
11.25° BEND	PHASING LIMITS	AUGER HOLE (AH)
REDUCER	PHASING LIMITS	MONITORING WELL LOCATION
CAP	PHASING LIMITS	CONCEPTUAL WELL LOCATION
SANITARY MAINTENANCE HOLE	PHASING LIMITS	TOP OF FOUNDATION ELEVATION
CAP	PHASING LIMITS	FINISHED FLOOR ELEVATION
STREET CATCHBASIN & LEAD	PHASING LIMITS	UNDERSIDE OF FOOTING ELEVATION
STREET CATCHBASIN WITH CLOSED LID & LEAD	PHASING LIMITS	NUMBER OF RISERS
STORM MAINTENANCE HOLE	PHASING LIMITS	UNITS REQUIRING PRESSURE REDUCING VALVES
CURB INLET CATCHBASIN & LEAD	PHASING LIMITS	WALK-OUT UNITS
CATCHBASIN/ MAINTENANCE HOLE INTERCONNECTED	PHASING LIMITS	SLAB ON GRADE
CATCH BASIN & LEADS	PHASING LIMITS	OVERLAND FLOW DIRECTION
CAP	PHASING LIMITS	EXTERNAL OVERLAND FLOW DIRECTION
CURB STOP	PHASING LIMITS	EMERGENCY OVERLAND FLOW DIRECTION
SINGLE SERVICE LOCATION (ST, SAN & WM)	PHASING LIMITS	TACTILE WALKING SURFACE INDICATOR (AS PER CITY OF OTTAWA STD. SC6, SC7, SC7.1, SC7.2, SC7.3)
TEE CATCHBASIN	PHASING LIMITS	PREVIOUS PHASES
PERFORATED PIPE	PHASING LIMITS	EXISTING SANITARY MAINTENANCE HOLE
ELBOW CATCHBASIN	PHASING LIMITS	EXISTING STORM MAINTENANCE HOLE
DITCH AND CULVERT	PHASING LIMITS	GROUNDWATER LEVEL PER PATTERSON GROUP DWG. PG0006-10
36.0m-250# INFILTRATION TRENCH (TYP.), SEE DETAIL ON DRAWING 4.	PHASING LIMITS	
HYDRO TRANSFORMER	PHASING LIMITS	
RETAINING WALL (SEE NOTES ON DWG. 1 AND STRUCTURAL DWG'S FOR DETAIL)	PHASING LIMITS	



NOT FOR CONSTRUCTION

TOPOGRAPHIC INFORMATION
 TOPOGRAPHIC INFORMATION PROVIDED BY J.D. BARNES LIMITED
 PROJECT No. 16-10-116-00, SURVEYS DATED NOVEMBER 30, 2017.
 PROJECT No. 16-10-116-00_PH2, SURVEYS DATED SEPTEMBER 27, 2019.
 PROJECT No. 22-10-030-01, SURVEYS DATED JUNE 21, 2023.

SITE PLAN INFORMATION
 SITE PLAN PROVIDED BY Q4 ARCHITECTS, DATED ON AUGUST 6, 2024.

ELEVATION NOTE
 ELEVATIONS ARE GEODETIC AND ARE DERIVED FROM SITE BENCHMARK NCC CONTROL POINT 001196530229.
ELEVATION = 86.12 m

1	S.L.M.	2024-08-30	1st SUBMISSION
---	--------	------------	----------------

CITY OF OTTAWA

PROJECT No. 24-1403

L. L. MERRICK
 LICENSED PROFESSIONAL ENGINEER
 100186523
 2024-08-30
 PROVINCE OF ONTARIO

CAIVAN (ORLEANS VILLAGE 2) LTD.
 ORLEANS VILLAGE PHASE 4

DSEL

120 Iber Road, Unit 103
 Stittsville, ON K2S 1E9
 Tel: (613) 836-0856
 Fax: (613) 836-7153
 www.DSEL.ca

SERVICING 3
 STA. 0+10.000 TO STA. 0+52.748

DRAWN BY:	C.P.B.	CHECKED BY:	S.L.M.	SHEET No.
DESIGNED BY:	C.P.B.	CHECKED BY:	S.L.M.	16 OF 25
SCALE:	1:500	DATE:	AUGUST 2024	

CITY PLAN No. ###
 CITY FILE No. ###