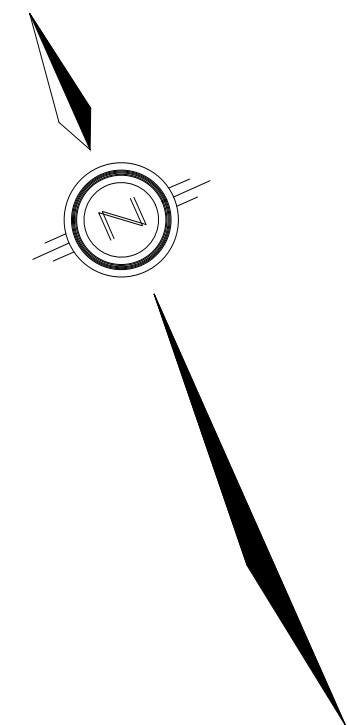
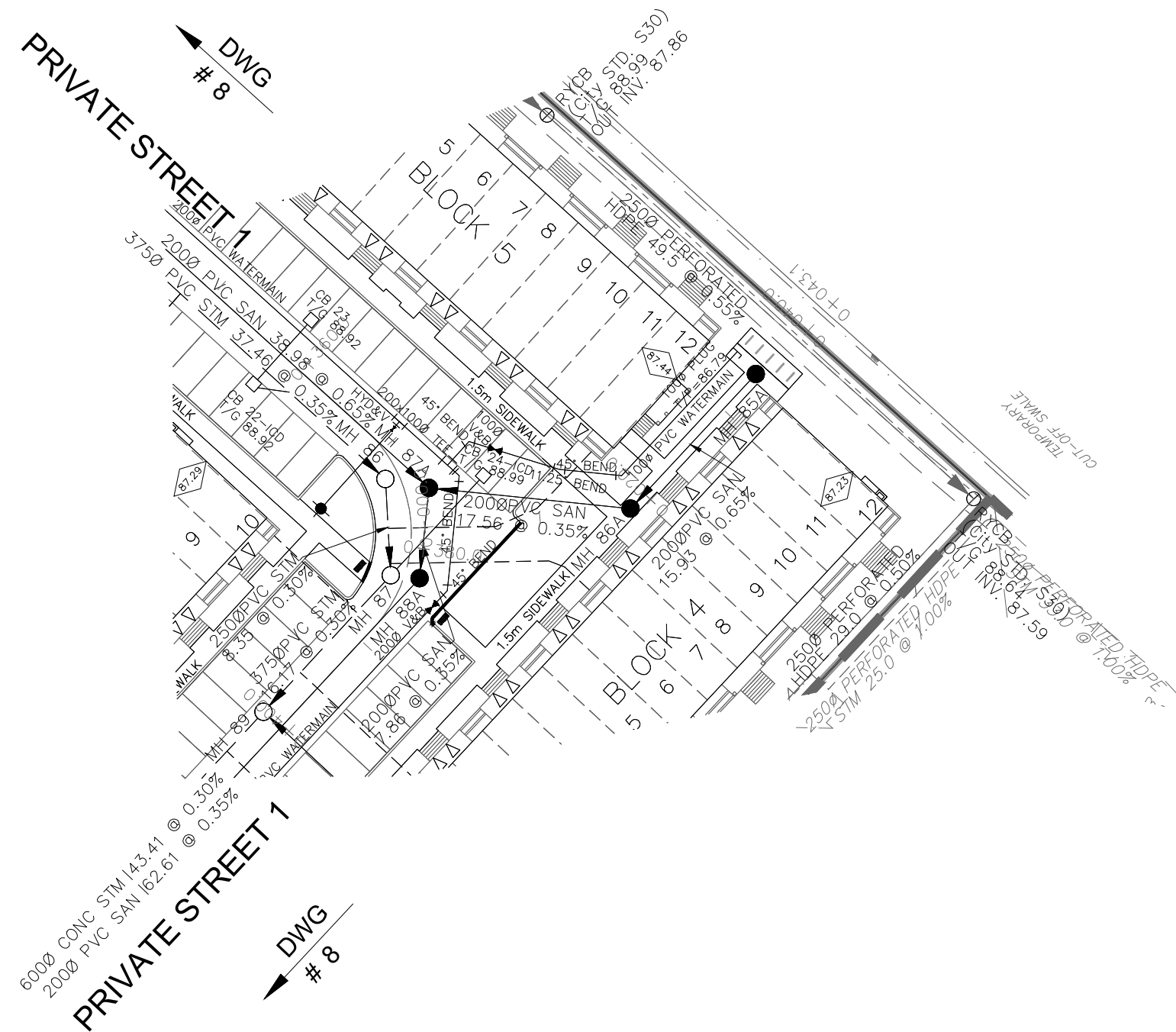


1. ANY DISTURBED AREA DURING CONSTRUCTION TO BE RESTORED TO ORIGINAL CONDITION OR BETTER TO THE SATISFACTION OF THE AUTHORITIES HAVING JURISDICTION OVER THE AREA. REFER TO THE LOCATIONS AND INVERT ELEVATIONS OF E. UNDERGROUND SERVICES AND UTILITIES PRIOR TO STARTING CONSTRUCTION
2. ALL EXISTING TREES, SHRUBS ETC. WITHIN LOTS, BLOCKS AND ROADS TO BE REMOVED, UNLESS OTHERWISE NOTED
3. PERMISSION REQUIRED FOR WORK ON ADJACENT LANDS
4. FORTALMAD BE PROVIDED, 2.4m MIN. COVER TO BE STUDS
5. ANY DISTURBED MATERIAL ENCOUNTERED BEING SUBGRADE LEVEL WITHIN A BUILDING FOOTPRINT TO BE SUB-EXCAVATED AND BACKFILLED WITH UNDISTURBED MATERIAL AS PER GEOLOGICAL ENGINEERS RECOMMENDATION
6. FOR CATCH-BASEIN DATA, REFER TO DWG. No. 2 FOR DETAILS
7. ALL DWELLINGS TO BE PROVIDED WITH REDUCING VALVES UNLESS OTHERWISE NOTED.



LEGEND

CROSS
45° BEND
LATERAL
INVERT, VALVE & VB
TEE
VALVE & VB
22.5° BEND
11.25° BEND
REDUCER
CAP

BIKE BACK
EARTH/BN (DWG. 3 FOR DETAILS)
STREET LIGHT STANDARD
CONCRETE SIDEWALK
CURB OR DEPRESSIONED CURB
ASPHALT SIDEWALK
CHAINLINK FENCE (1.5m UNLESS OTHERWISE NOTED)
NOISE BARRIER (2.2m)
WOODEN POST
AND RAIL FENCE
CONSTRUCTION FENCE
POST AND RAIL FENCE
PHASING LIMITS
PROPERTY BOUNDARY
BORROWHOLE (BH)
TEST PIT (TP)
ALTER HOLE (AH)
MONITORING WELL LOCATION
CONCEPTUAL WELL LOCATION

AS PER GEOTECHNICAL REPORT

6	TOP OF FOUNDATION ELEVATION
1.00	FINISHED FLOOR ELEVATION
1.00	UNDERSIDE OF FOOTING ELEVATION
2.00	NUMBER OF RISERS
2.00	REDUCED PRESSURE
2.00	REDUCING VALVES
2.00	SLAB ON GRADE
2.00	OVERLAND FLOW DIRECTION
2.00	EXTERNAL OVERLAND FLOW DIRECTION
2.00	INTERNAL OVERLAND FLOW DIRECTION
2.00	TACTILE WALKING SURFACE INDICATOR (AS PER CITY OF OTTAWA STD. SCS, SGT, SGT1, SGT2, SGT3)
2.00	PREVIOUS RPS
2.00	EXISTING SANITARY MAINTENANCE HOLE
2.00	EXISTING STORM MAINTENANCE HOLE
2.00	GROUNDWATER LEVEL PER PATERNOSTER G.W. LOG PG0306-10

10/20/04

HYDRO TRANSFORMER

RETAINING WALL (SEE NOTES ON DWG. 1 AND STRUCTURAL DWG'S FOR DETAILS)

TOPOGRAPHIC INFORMATION

TOPOGRAPHIC INFORMATION PROVIDED BY J.D. BARNES LIMITED
PROJECT No. 16-10-116-00. SURVEYS DATED NOVEMBER 30, 2017.
PROJECT No. 16-10-116-00_PH2. SURVEYS DATED SEPTEMBER 27, 2019.
PROJECT No. 22-10-030-01. SURVEYS DATED JUNE 21, 2023.

SITE PLAN PROVIDED BY Q4 ARCHITECTS, DATED ON MARCH 20, 2025.

ELEVATIONS ARE GEODETIC AND ARE DERIVED FROM SITE BENCHMARK NCC
CONTROL POINT 001196530229.
ELEVATION = 86.12 m


2	S.L.M	2025-04-02	DRAFT – ISSUED FOR ZONING BY-LAW AMENDMENT
1	S.L.M	2024-08-30	1st SUBMISSION
No.	BY	DATE	DESCRIPTION



**CAIVAN
(ORLEANS
VILLAGE 2)
LTD.**

ORLEANS VILLAGE

PHASE 4



120 IBER Road, Unit 103
 Stittsville, ON K2S 1E9
 Tel. (613) 836-0858
 Fax. (613) 836-7183
www.DSEL.ca

SERVICING 2

© DSEL

STA. 0+/-10.000 TO STA. 0+50.184

DRAWN BY: C.P.B.	CHECKED BY: S.L.M.	SHEET NO.
DESIGNED BY: C.P.B.	CHECKED BY: S.L.M.	<div style="font-size: 2em; font-weight: bold;">13</div> <div style="font-size: 1.5em; font-weight: bold;">OF</div> <div style="font-size: 2em; font-weight: bold;">25</div>
SCALE: 1:500	DATE: AUGUST 2024	