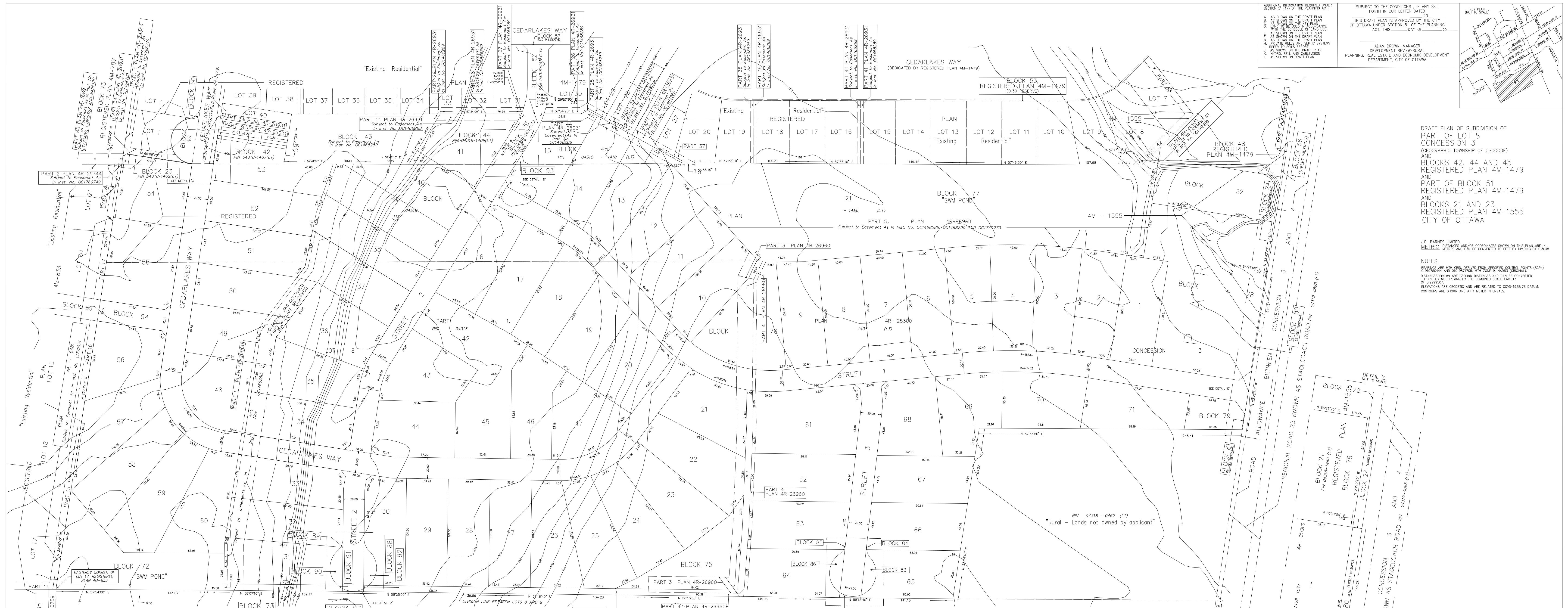


ADDITIONAL INFORMATION REQUIRED UNDER SECTION 117 OF THE PLANNING ACT:  
 THIS DRAFT PLAN IS APPROVED BY THE CITY OF OTTAWA UNDER SECTION 51 OF THE PLANNING ACT, THIS \_\_\_\_\_ DAY OF \_\_\_\_\_, 20\_\_.

ADAM BROWN, MANAGER  
 DEVELOPMENT, REAL ESTATE AND ECONOMIC DEVELOPMENT  
 DEPARTMENT, CITY OF OTTAWA

DATE: \_\_\_\_\_  
 OFFICIAL: \_\_\_\_\_



DRAFT PLAN OF SUBDIVISION OF  
 PART OF LOT 8  
 CONCESSION 3  
 (GEOGRAPHIC TOWNSHIP OF OSSINGTON)  
 AND  
 BLOCKS 42, 44 AND 45  
 REGISTERED PLAN 4M-1479  
 AND  
 PART OF BLOCK 51  
 REGISTERED PLAN 4M-1479  
 AND  
 BLOCKS 21 AND 23  
 REGISTERED PLAN 4M-1555  
 CITY OF OTTAWA

J.D. BARNES LIMITED  
 DISTANCES AND/OR COORDINATES SHOWN ON THIS PLAN ARE IN METRIC UNITS AND CAN BE CONVERTED TO FEET BY DIVIDING BY 0.3048

NOTES  
 1. DIMENSIONS ARE GIVEN UNLESS OTHERWISE SPECIFIED.  
 2. DISTANCES ARE GIVEN IN METERS AND CAN BE CONVERTED TO FEET BY MULTIPLYING BY THE CONVERSION FACTOR 3.28084.  
 3. ELEVATIONS ARE GEODETIC AND ARE RELATED TO CGVD-1928 DATUM.  
 4. CONTOURS ARE SHOWN AT 1-METER INTERVALS.

LOT 9  
REGISTERED PLAN 4M-1285  
PART 1, PLAN 4R-20759

LOT 18  
REGISTERED PLAN 4M-833  
PART 1, PLAN 4R-20759

LOT 19  
REGISTERED PLAN 4M-833  
PART 1, PLAN 4R-20759

LOT 17  
REGISTERED PLAN 4M-833  
PART 1, PLAN 4R-20759

LOT 14  
REGISTERED PLAN 4M-833  
PART 1, PLAN 4R-20759

LOT 9 CONCESSION 3  
PART 1, PLAN SR-3549  
PIN 04318-0463 (L1)

LOT 10 CONCESSION 3  
PART 1, PLAN SR-3549  
PIN 04318-0463 (L1)

LOT 11 CONCESSION 3  
PART 1, PLAN SR-3549  
PIN 04318-0463 (L1)

LOT 12 CONCESSION 3  
PART 1, PLAN SR-3549  
PIN 04318-0463 (L1)

LOT 13 CONCESSION 3  
PART 1, PLAN SR-3549  
PIN 04318-0463 (L1)

LOT 14 CONCESSION 3  
PART 1, PLAN SR-3549  
PIN 04318-0463 (L1)

LOT 15 CONCESSION 3  
PART 1, PLAN SR-3549  
PIN 04318-0463 (L1)

LOT 16 CONCESSION 3  
PART 1, PLAN SR-3549  
PIN 04318-0463 (L1)

LOT 17 CONCESSION 3  
PART 1, PLAN SR-3549  
PIN 04318-0463 (L1)

LOT 18 CONCESSION 3  
PART 1, PLAN SR-3549  
PIN 04318-0463 (L1)

LOT 19 CONCESSION 3  
PART 1, PLAN SR-3549  
PIN 04318-0463 (L1)

LOT 20 CONCESSION 3  
PART 1, PLAN SR-3549  
PIN 04318-0463 (L1)

LOT 21 CONCESSION 3  
PART 1, PLAN SR-3549  
PIN 04318-0463 (L1)

LOT 22 CONCESSION 3  
PART 1, PLAN SR-3549  
PIN 04318-0463 (L1)

LOT 23 CONCESSION 3  
PART 1, PLAN SR-3549  
PIN 04318-0463 (L1)

LOT 24 CONCESSION 3  
PART 1, PLAN SR-3549  
PIN 04318-0463 (L1)

LOT 25 CONCESSION 3  
PART 1, PLAN SR-3549  
PIN 04318-0463 (L1)

LOT 26 CONCESSION 3  
PART 1, PLAN SR-3549  
PIN 04318-0463 (L1)

LOT 27 CONCESSION 3  
PART 1, PLAN SR-3549  
PIN 04318-0463 (L1)

LOT 28 CONCESSION 3  
PART 1, PLAN SR-3549  
PIN 04318-0463 (L1)

LOT 29 CONCESSION 3  
PART 1, PLAN SR-3549  
PIN 04318-0463 (L1)

LOT 30 CONCESSION 3  
PART 1, PLAN SR-3549  
PIN 04318-0463 (L1)

LOT 31 CONCESSION 3  
PART 1, PLAN SR-3549  
PIN 04318-0463 (L1)

LOT 32 CONCESSION 3  
PART 1, PLAN SR-3549  
PIN 04318-0463 (L1)

LOT 33 CONCESSION 3  
PART 1, PLAN SR-3549  
PIN 04318-0463 (L1)

LOT 34 CONCESSION 3  
PART 1, PLAN SR-3549  
PIN 04318-0463 (L1)

LOT 35 CONCESSION 3  
PART 1, PLAN SR-3549  
PIN 04318-0463 (L1)

LOT 36 CONCESSION 3  
PART 1, PLAN SR-3549  
PIN 04318-0463 (L1)

LOT 37 CONCESSION 3  
PART 1, PLAN SR-3549  
PIN 04318-0463 (L1)

LOT 38 CONCESSION 3  
PART 1, PLAN SR-3549  
PIN 04318-0463 (L1)

LOT 39 CONCESSION 3  
PART 1, PLAN SR-3549  
PIN 04318-0463 (L1)

LOT 40 CONCESSION 3  
PART 1, PLAN SR-3549  
PIN 04318-0463 (L1)

LOT 41 CONCESSION 3  
PART 1, PLAN SR-3549  
PIN 04318-0463 (L1)

LOT 42 CONCESSION 3  
PART 1, PLAN SR-3549  
PIN 04318-0463 (L1)

LOT 43 CONCESSION 3  
PART 1, PLAN SR-3549  
PIN 04318-0463 (L1)

LOT 44 CONCESSION 3  
PART 1, PLAN SR-3549  
PIN 04318-0463 (L1)

LOT 45 CONCESSION 3  
PART 1, PLAN SR-3549  
PIN 04318-0463 (L1)

LOT 46 CONCESSION 3  
PART 1, PLAN SR-3549  
PIN 04318-0463 (L1)

LOT 47 CONCESSION 3  
PART 1, PLAN SR-3549  
PIN 04318-0463 (L1)

LOT 48 CONCESSION 3  
PART 1, PLAN SR-3549  
PIN 04318-0463 (L1)

LOT 49 CONCESSION 3  
PART 1, PLAN SR-3549  
PIN 04318-0463 (L1)

LOT 50 CONCESSION 3  
PART 1, PLAN SR-3549  
PIN 04318-0463 (L1)

LOT 51 CONCESSION 3  
PART 1, PLAN SR-3549  
PIN 04318-0463 (L1)

LOT 52 CONCESSION 3  
PART 1, PLAN SR-3549  
PIN 04318-0463 (L1)

LOT 53 CONCESSION 3  
PART 1, PLAN SR-3549  
PIN 04318-0463 (L1)

LOT 54 CONCESSION 3  
PART 1, PLAN SR-3549  
PIN 04318-0463 (L1)

LOT 55 CONCESSION 3  
PART 1, PLAN SR-3549  
PIN 04318-0463 (L1)

LOT 56 CONCESSION 3  
PART 1, PLAN SR-3549  
PIN 04318-0463 (L1)

LOT 57 CONCESSION 3  
PART 1, PLAN SR-3549  
PIN 04318-0463 (L1)

LOT 58 CONCESSION 3  
PART 1, PLAN SR-3549  
PIN 04318-0463 (L1)

LOT 59 CONCESSION 3  
PART 1, PLAN SR-3549  
PIN 04318-0463 (L1)

LOT 60 CONCESSION 3  
PART 1, PLAN SR-3549  
PIN 04318-0463 (L1)

LOT 61 CONCESSION 3  
PART 1, PLAN SR-3549  
PIN 04318-0463 (L1)

LOT 62 CONCESSION 3  
PART 1, PLAN SR-3549  
PIN 04318-0463 (L1)

LOT 63 CONCESSION 3  
PART 1, PLAN SR-3549  
PIN 04318-0463 (L1)

LOT 64 CONCESSION 3  
PART 1, PLAN SR-3549  
PIN 04318-0463 (L1)

LOT 65 CONCESSION 3  
PART 1, PLAN SR-3549  
PIN 04318-0463 (L1)

LOT 66 CONCESSION 3  
PART 1, PLAN SR-3549  
PIN 04318-0463 (L1)

LOT 67 CONCESSION 3  
PART 1, PLAN SR-3549  
PIN 04318-0463 (L1)

LOT 68 CONCESSION 3  
PART 1, PLAN SR-3549  
PIN 04318-0463 (L1)

LOT 69 CONCESSION 3  
PART 1, PLAN SR-3549  
PIN 04318-0463 (L1)

LOT 70 CONCESSION 3  
PART 1, PLAN SR-3549  
PIN 04318-0463 (L1)

LOT 71 CONCESSION 3  
PART 1, PLAN SR-3549  
PIN 04318-0463 (L1)

LOT 72 CONCESSION 3  
PART 1, PLAN SR-3549  
PIN 04318-0463 (L1)

LOT 73 CONCESSION 3  
PART 1, PLAN SR-3549  
PIN 04318-0463 (L1)

LOT 74 CONCESSION 3  
PART 1, PLAN SR-3549  
PIN 04318-0463 (L1)

LOT 75 CONCESSION 3  
PART 1, PLAN SR-3549  
PIN 04318-0463 (L1)

LOT 76 CONCESSION 3  
PART 1, PLAN SR-3549  
PIN 04318-0463 (L1)

LOT 77 CONCESSION 3  
PART 1, PLAN SR-3549  
PIN 04318-0463 (L1)

LOT 78 CONCESSION 3  
PART 1, PLAN SR-3549  
PIN 04318-0463 (L1)

LOT 79 CONCESSION 3  
PART 1, PLAN SR-3549  
PIN 04318-0463 (L1)

LOT 80 CONCESSION 3  
PART 1, PLAN SR-3549  
PIN 04318-0463 (L1)

LOT 81 CONCESSION 3  
PART 1, PLAN SR-3549  
PIN 04318-0463 (L1)

LOT 82 CONCESSION 3  
PART 1, PLAN SR-3549  
PIN 04318-0463 (L1)

LOT 83 CONCESSION 3  
PART 1, PLAN SR-3549  
PIN 04318-0463 (L1)

LOT 84 CONCESSION 3  
PART 1, PLAN SR-3549  
PIN 04318-0463 (L1)

LOT 85 CONCESSION 3  
PART 1, PLAN SR-3549  
PIN 04318-0463 (L1)

LOT 86 CONCESSION 3  
PART 1, PLAN SR-3549  
PIN 04318-0463 (L1)

LOT 87 CONCESSION 3  
PART 1, PLAN SR-3549  
PIN 04318-0463 (L1)

LOT 88 CONCESSION 3  
PART 1, PLAN SR-3549  
PIN 04318-0463 (L1)

LOT 89 CONCESSION 3  
PART 1, PLAN SR-3549  
PIN 04318-0463 (L1)

LOT 90 CONCESSION 3  
PART 1, PLAN SR-3549  
PIN 04318-0463 (L1)

LOT 91 CONCESSION 3  
PART 1, PLAN SR-3549  
PIN 04318-0463 (L1)

LOT 92 CONCESSION 3  
PART 1, PLAN SR-3549  
PIN 04318-0463 (L1)

LOT 93 CONCESSION 3  
PART 1, PLAN SR-3549  
PIN 04318-0463 (L1)

LOT 94 CONCESSION 3  
PART 1, PLAN SR-3549  
PIN 04318-0463 (L1)

LOT 1 CONCESSION 3  
PART 1, PLAN SR-3549  
PIN 04318-0463 (L1)

LOT 2 CONCESSION 3  
PART 1, PLAN SR-3549  
PIN 04318-0463 (L1)

LOT 3 CONCESSION 3  
PART 1, PLAN SR-3549  
PIN 04318-0463 (L1)

LOT 4 CONCESSION 3  
PART 1, PLAN SR-3549  
PIN 04318-0463 (L1)

LOT 5 CONCESSION 3  
PART 1, PLAN SR-3549  
PIN 04318-0463 (L1)

LOT 6 CONCESSION 3  
PART 1, PLAN SR-3549  
PIN 04318-0463 (L1)

LOT 7 CONCESSION 3  
PART 1, PLAN SR-3549  
PIN 04318-0463 (L1)

LOT 8 CONCESSION 3  
PART 1, PLAN SR-3549  
PIN 04318-0463 (L1)

REGISTERED PLAN 4M-1555  
PART 1, PLAN SR-3549  
PIN 04318-0463 (L1)

REGISTERED PLAN 4M-1479  
PART 1, PLAN SR-3549  
PIN 04318-0463 (L1)

REGISTERED PLAN 4M-1555  
PART 1, PLAN SR-3549  
PIN 04318-0463 (L1)

REGISTERED PLAN 4M-1555  
PART 1, PLAN SR-3549  
PIN 04318-0463 (L1)

LAND USE	LOTS/BLOCK(S)	AREA (sq. m)
RESIDENTIAL	1 TO 71 (INCLUSIVE), AND 93	296942.5
PARK	78	15386.3
DRAINAGE	73 AND 74	3342.7
OPEN SPACE	76 AND 79	7055.9
SWM POND	72, 75 AND 77	46118.6
STREET WIDENING	80 AND 81	94.1
RESERVE BLOCK	82 AND 87	61.7
TURNING CIRCLE	83 TO 86 (INCLUSIVE), 88 TO 92 (INCLUSIVE)	1,374.1
FUTURE STREET	94	1,360.5
STREETS	1 TO 3 (INCLUSIVE), AND CEDARLAKES WAY	43549.7

OWNER'S CERTIFICATE  
 I HEREBY CERTIFY THAT THE REGISTERED OWNERS OF THE SUBJECT LANDS HAVE AUTHORIZED J.D. BARNES LIMITED TO PREPARE AND SUBMIT THIS DRAFT PLAN OF SUBDIVISION FOR APPROVAL.

DATE: \_\_\_\_\_  
 OFFICIAL: \_\_\_\_\_

OWNER'S CERTIFICATE  
 I HEREBY CERTIFY THAT THE REGISTERED OWNERS OF THE SUBJECT LANDS HAVE AUTHORIZED J.D. BARNES LIMITED TO PREPARE AND SUBMIT THIS DRAFT PLAN OF SUBDIVISION FOR APPROVAL.

DATE: \_\_\_\_\_  
 OFFICIAL: \_\_\_\_\_

SURVEYOR'S CERTIFICATE  
 THE BOUNDARIES OF THE LANDS TO BE SUBDIVIDED AS SHOWN ON THIS PLAN AND THEIR RELATIONSHIP TO THE ADJOINING LANDS ARE ACCURATELY AND CORRECTLY SHOWN.

DATE: \_\_\_\_\_  
 OFFICIAL: \_\_\_\_\_

DATE: 07/08/24