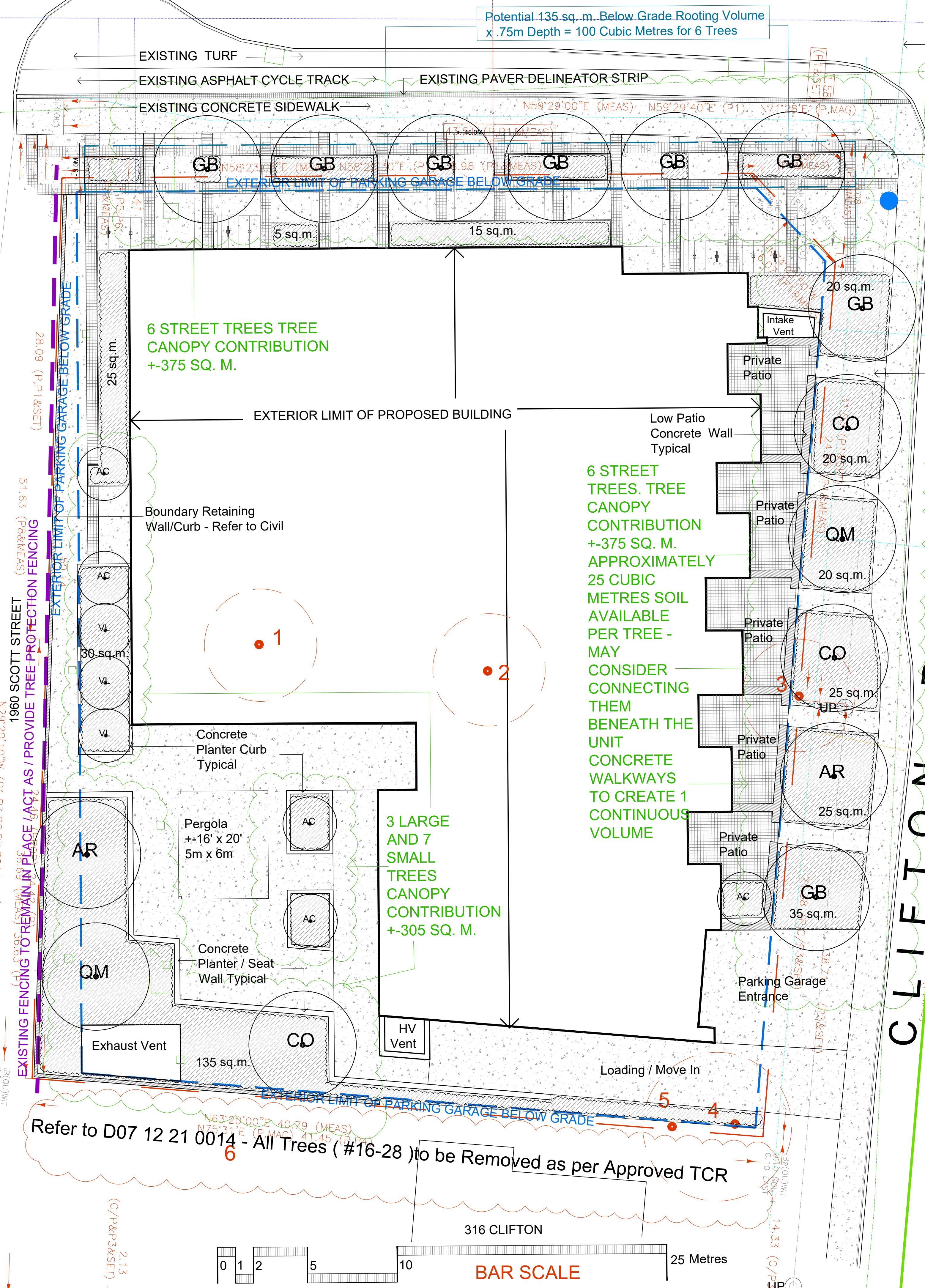


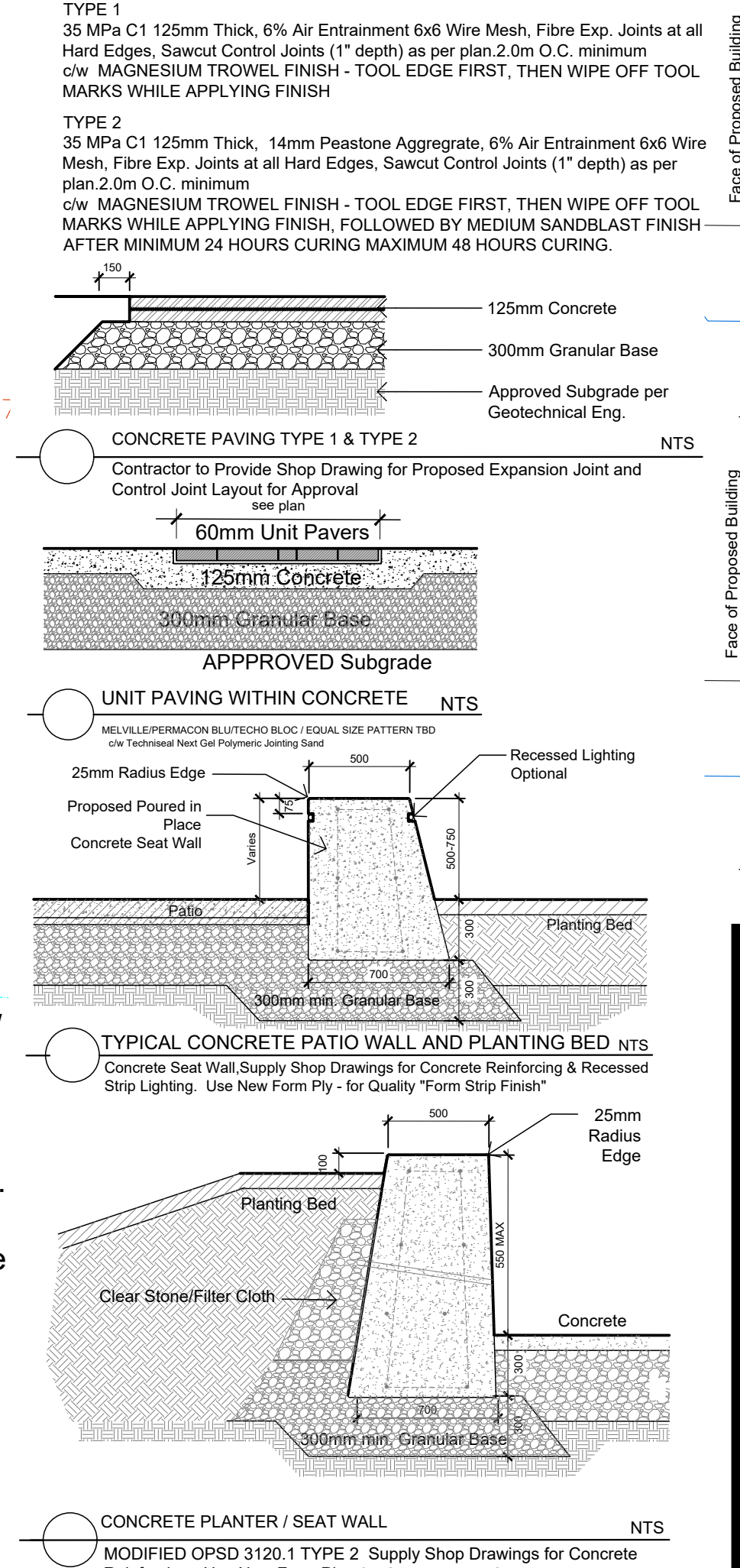
# SCOTT STREET



Utility Pole / Overhead Wires Crossing Scott Street To Remain

Utility Poles / Overhead Wires to be Removed along Clifton. New Hydro Service to be buried - Location TBD

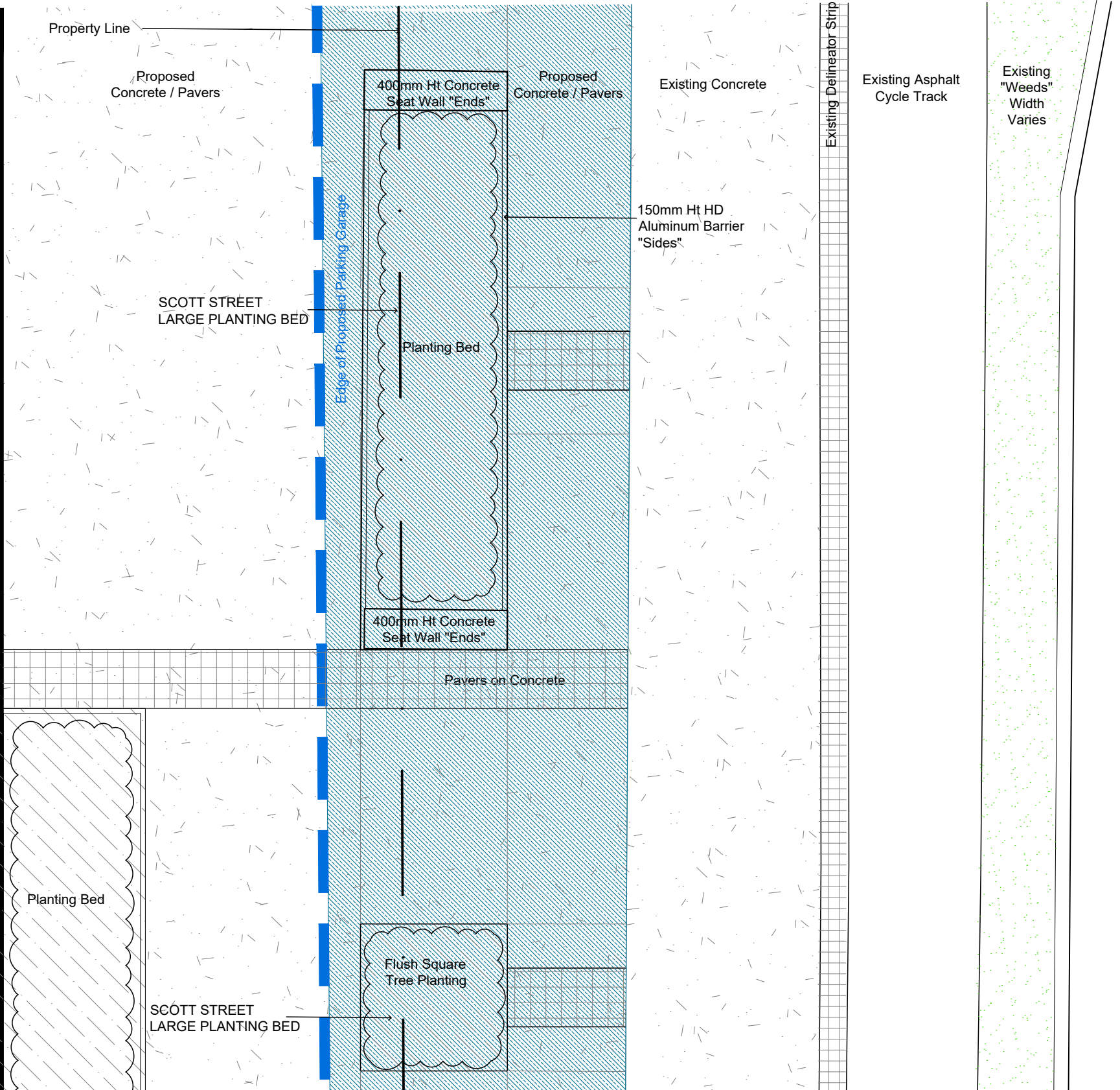
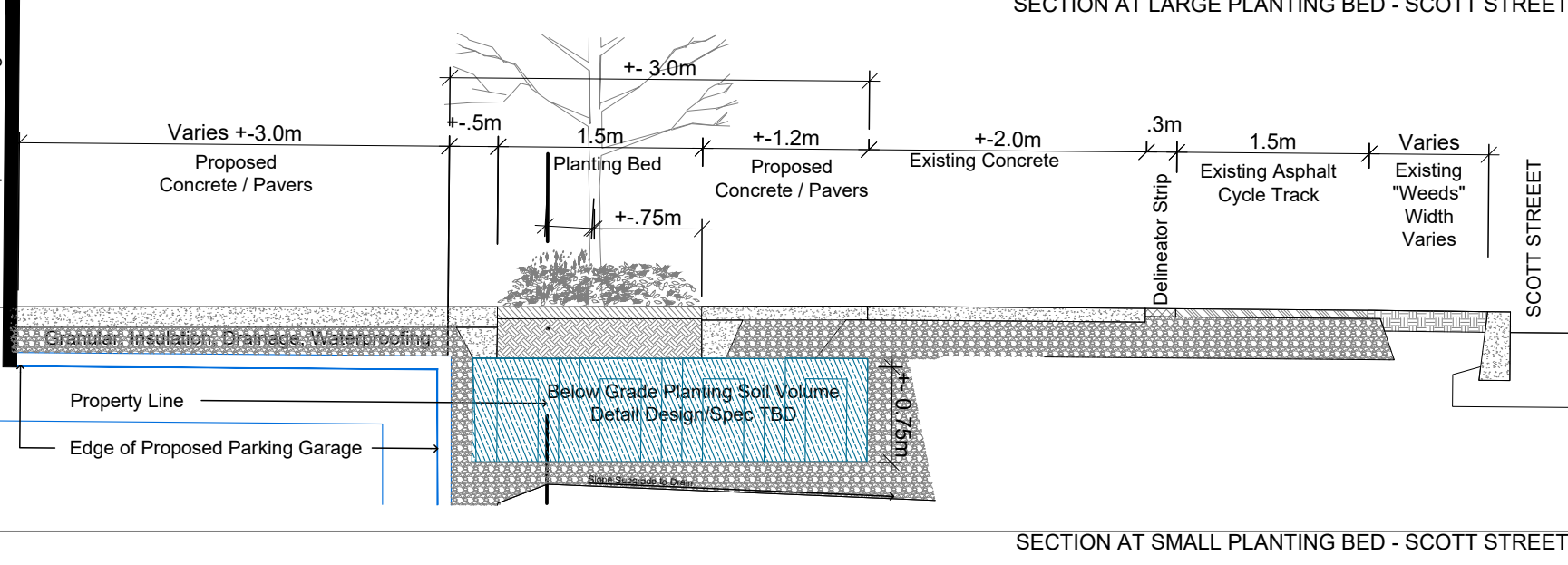
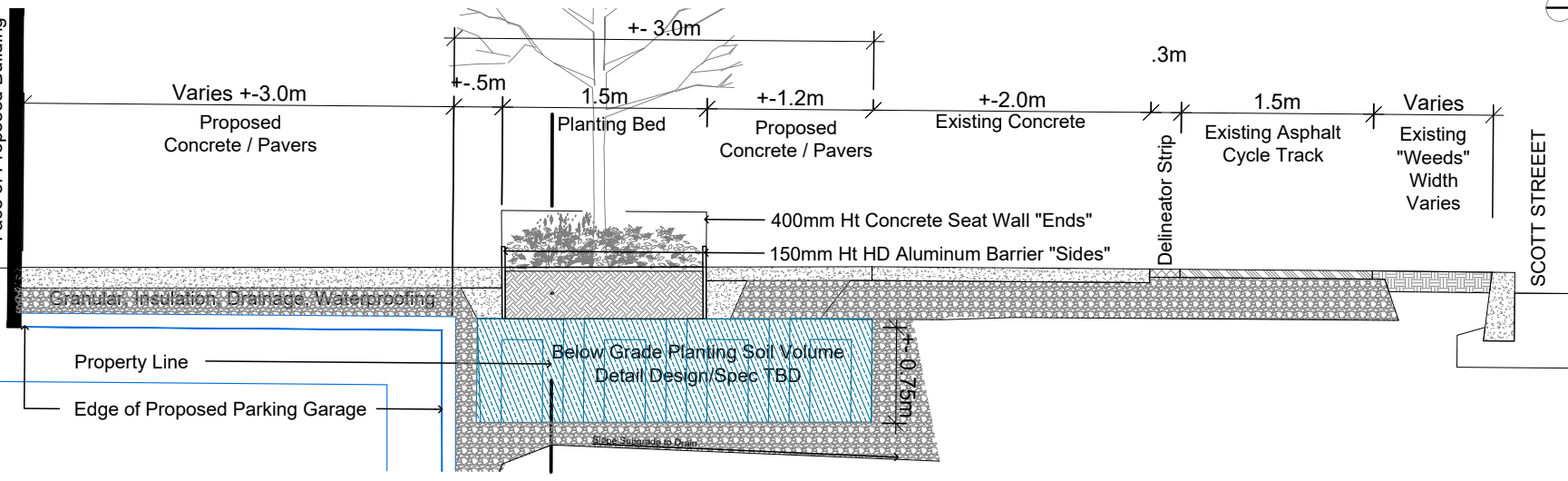
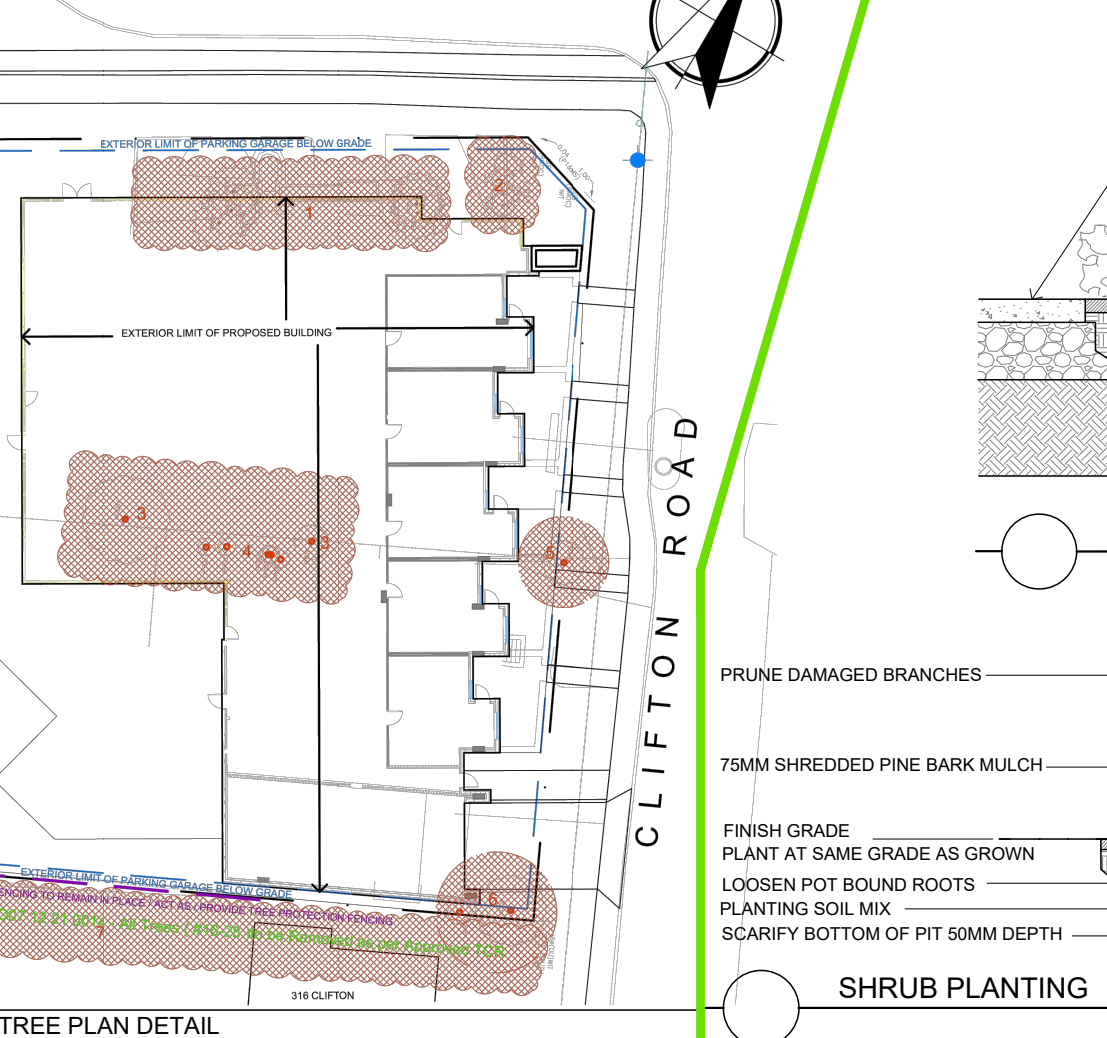
CLIFTON ROAD



**Ottawa TREE PROTECTION SPECIFICATION**

DATE: MARCH 2021  
ISSUED BY: 1 of 1

TRF #	VARIETY	COMMON NAME	DESCRIPTION	OWNER/SHR #	CONDITION	REMARKS/REMOVAL	OTHER REMARKS
1	Thuja occidentalis	White Cedar	Multiple Clumps 0-15cm	Private	Good	REMOVE	
2	Juniperus virginiana	Eastern Red Cedar	Multiple 0-15cm	Private	EXCELLENT	REMOVE	
3	Acer negundo	Manitoba Maple	2 Trees - 120cm and 90cm	Private	POOR	REMOVE	
4	Acer saccharum	Sugar Maple	5 Trees @ 30cm each	Private	Good	REMOVE	
5	Acer saccharum	Sugar Maple	60cm Heavily Hydro Pruned	Private	POOR	REMOVE	
6	Refer to TCR D07 12 21 0014	Refer to TCR D07 12 21 0014	2 Trees - 90cm and 30cm	Private	D07 12 21 0014	Refer to TCR D07 12 21 0014	Refer to TCR D07 12 21 0014
7	Refer to TCR D07 12 21 0014	Refer to TCR D07 12 21 0014	Neighbours	D07 12 21 0014	D07 12 21 0014	Refer to TCR D07 12 21 0014	Refer to TCR D07 12 21 0014

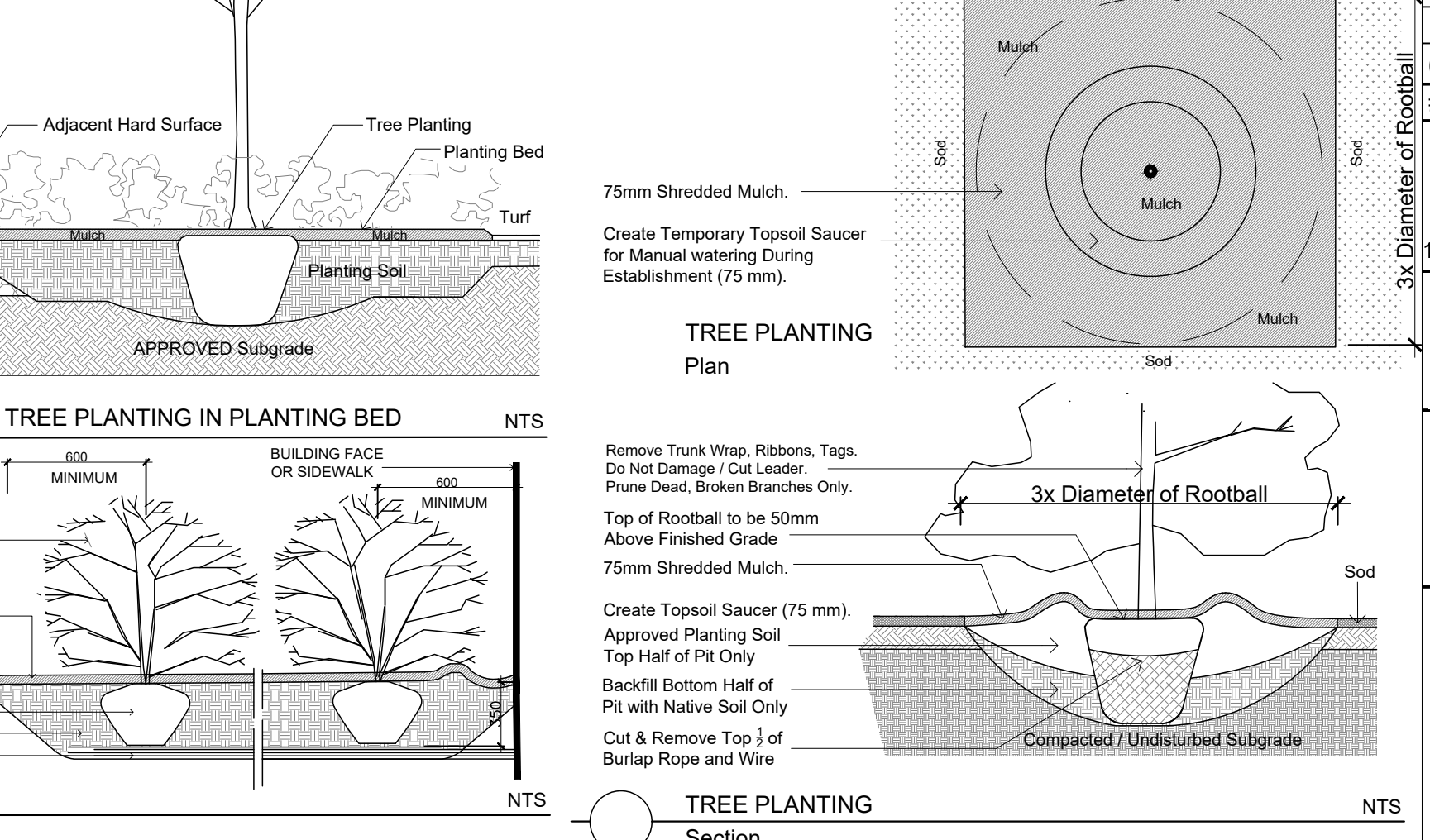


**TREE SCHEDULE 1950 SCOTT STREET**

CODE	QUANTITY	BOTANICAL NAME	COMMON NAME	I&B SPECIMEN	SPREAD	NATIVE
AC	5	0	Amelanchier canadensis	Tree Serviceberry	50mm cal 5M	NATIVE
AR	1	1	Acer rubrum	Red Maple	60mm cal 12M	NATIVE
CO	1	2	Celtis occidentalis	Common Hackberry	60mm cal 18M	NATIVE
GB	0	8	Ginkgo biloba	Maidenhair Tree	60mm cal 12M	NATIVE
QM	1	1	Quercus macrocarpa	Bur Oak	60mm cal 20M	NATIVE
VL	3	0	Viburnum lentago	Nannyberry	50mm cal 3M	NATIVE
<b>TOTALS</b>	<b>11</b>	<b>12</b>				

**SHRUBS 1950 SCOTT STREET - 375 SQ. M + SCOTT STREET ROW BEDS**

Code	Qty.	Botanical Name	Common Name	Size	Condition	NATIVE
HK	225	Hypericum kalmianum	Kalm St. John's Wort	30cm	Pot	NATIVE
HP	175	Hypericum prolificum	Shrubby St. John's Wort	40cm	Pot	NATIVE
RP	75	Rosa palustris	Swamp Rose	50cm	Pot	NATIVE
SA	150	Spiraea alba	Meadowsweet	60cm	Pot	NATIVE



Drawing Remains the Property of Copyright Reserved by GJA INC. Do Not Use or Reproduce Without Approval of Gino J. Aiello.

PLANTING MIX TO BE APPROVED BY LANDSCAPE ARCHITECT | PLANT MATERIAL TO MEET CNLA STANDARDS/BE APPROVED BY LANDSCAPE ARCHITECT PRIOR TO PLANTING ALL MATERIALS & WORK TO BE MAINTAINED UNTIL FINAL ACCEPTANCE. INCLUDE 1 YEAR WARRANTY FROM DATE OF FINAL ACCEPTANCE | REFER TO CIVIL ENGINEER'S DRAWING FOR ELEVATIONS / GRADING |

The Landscape Plan is to be read in conjunction with the grading, servicing, site and survey plan. All trees to be preserved on or directly adjacent to the site will be protected | Plant material are to be installed a minimum of 3.0m away from any part of any hydro transformer, 3.0m corridor between a fire hydrant and the curb, a 2.5m radius beside or behind a fire hydrant, 2.0m from any servicing/utility line or structure |



**HAUSER**  
LIFE PLANNING

**LEGEND**

**LANDSCAPE REMOVALS**  
Existing Tree to Remove  
LANDSCAPE PROPOSED

Deciduous Tree  
Scott Street Small Planting Bed  
Scott Street Large Planting Bed  
Typical Planting Bed  
Concrete  
Precast Pavers  
Concrete Seat Wall  
Anchor to Concrete  
SITE / ARCHITECTURE  
Parking Garage Below  
Fire Hydrant  
FD Siamese Connection  
Light Standard  
Hydro/Utility Pole

**BELOW GRADE SERVICES REFER TO CIVIL/CUP**  
WTR - U/G Water Service  
STM - U/G Storm Service  
SAN - U/G Sanitary Service  
GAS - U/G Gas Service  
BC - U/G TelCo Service  
H - U/G Hydro Service  
C - U/G Cable Service

**GRANITE PRIVATE EQUITY LIMITED PARTNERSHIP**  
16 Concourse Gate, Suite 200 Ottawa, ON K2E 7S8

**GJA INC.**  
GINO J. AIELLO | LANDSCAPE ARCHITECT  
GJAL.COM | 613 286 5130 | GINO@GJAL.COM

**MULTI UNIT RESIDENTIAL DEVELOPMENT**  
1950 SCOTT STREET

**Landscape Plan / TCR**

Scale: 1:125

**2** ZBLA 2024 09 24  
**1** SPC SUBMISSION 1 2024 07 31  
**0** REVIEW/COORDINATION 2024 06 00  
**#** Revision Date

**PROPERTY OWNER**  
Granite Private Equity Limited Partnership  
16 Concourse Gate, Suite 200 Ottawa, ON K2E 7S8

**ARCHITECT:** GINO J. AIELLO | LANDSCAPE ARCHITECT  
**CIVIL:** NOVATECH NOVATECH-ENG.COM  
**LANDSCAPE ARCHITECT:** GJA INC. GJAL.COM  
**SURVEYOR:** STANTEC GEOMATICS STANTEC.COM