



**The
Conservancy**
BARRHAVEN • OTTAWA

CONSERVANCY EAST

LANDSCAPE DESIGN BRIEF | Revised AUGUST 2024

CAIVAN
COMMUNITIES

NAK ■
design strategies



TABLE OF CONTENTS

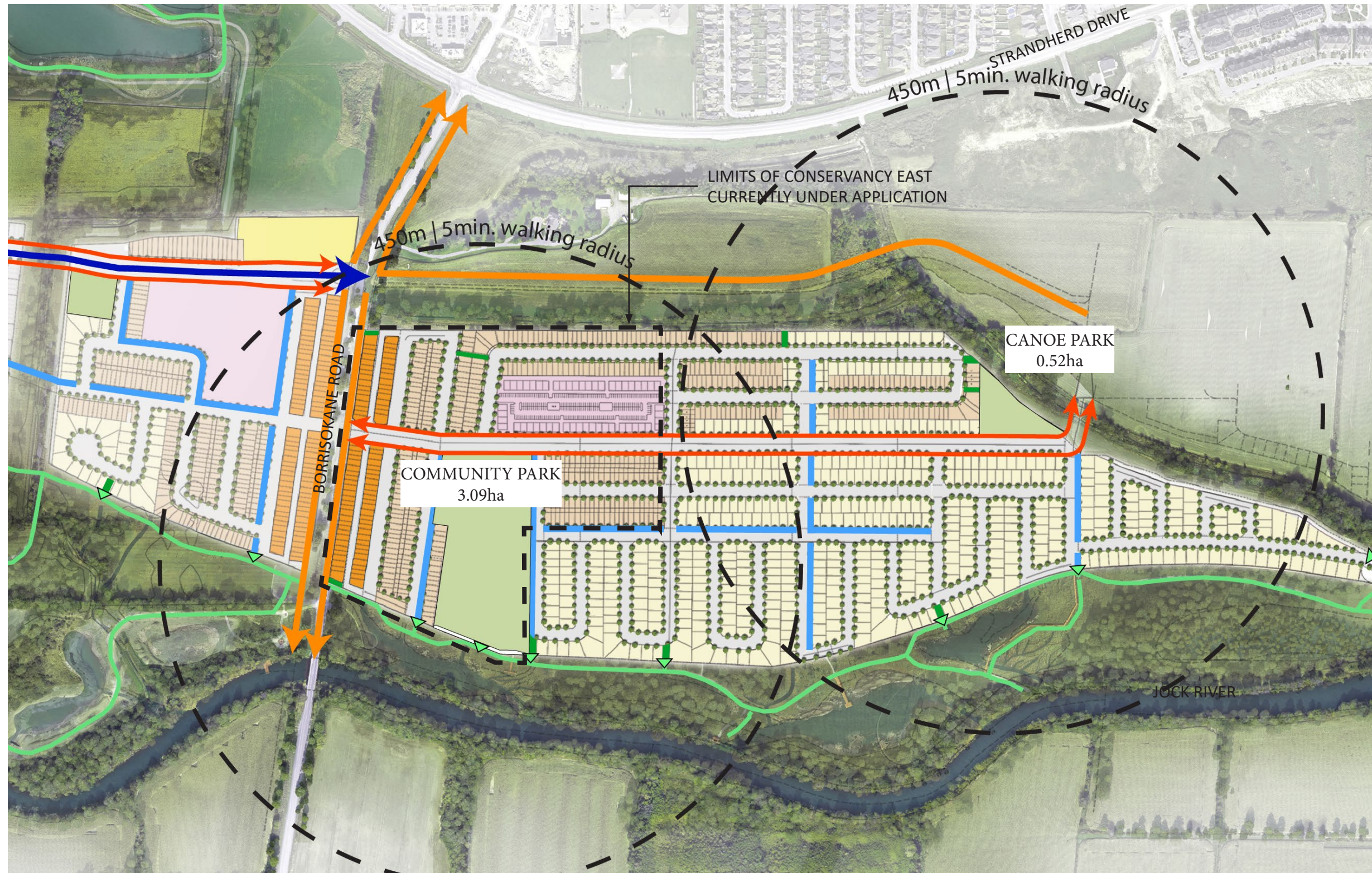
Community Master Plan.....3
Active Mobility and Open Space4
Community Park.....5
Canoe Park6
Soil Volume Calculations7



COMMUNITY MASTER PLAN



ACTIVE MOBILITY & OPEN SPACE



LEGEND

- BRT Alignment
- Cycle Track / Sidewalk
- Multi-Use Pathway
- Sidewalk
- Walkway Block
- Recreational Trails
- ▼ Trail Access Points

- 18.9 m Rear-Lane TH
- Stacked Condo
- 19.6' Standard Townhouse

NOTE:
 Conservancy Lands west of Borriskane Road shown for active transportation and connectivity context only.

Disclaimer:
 Canoe Park is not within the Limits of Conservancy East currently under application, it is shown for connectivity context only.

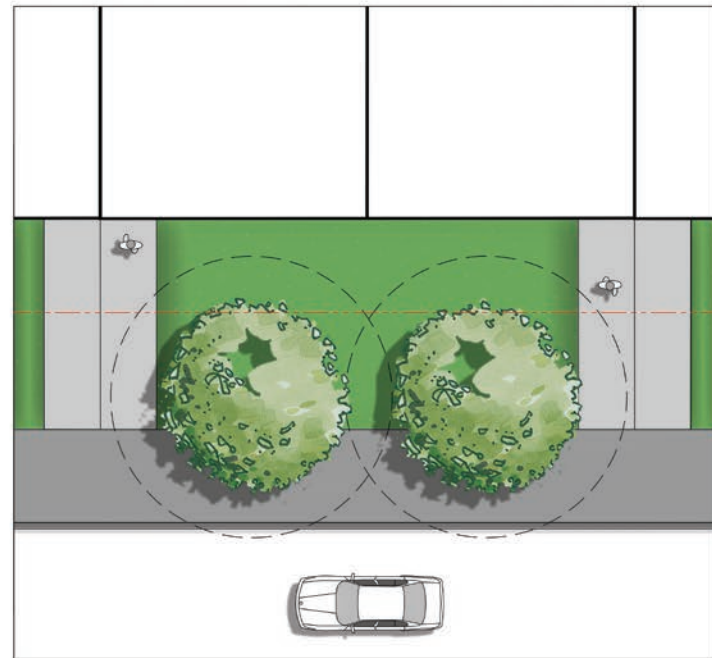


DISCLAIMER: WHILE EVERY EFFORT WILL BE MADE TO PROVIDE THE FEATURES SHOWN ON THIS PLAN, SOME REVISIONS MAY BE NECESSARY DURING DETAILED DESIGN, TENDERING AND CONSTRUCTION.

CANOE PARK 0.50ha



SOIL VOLUME CALCULATION



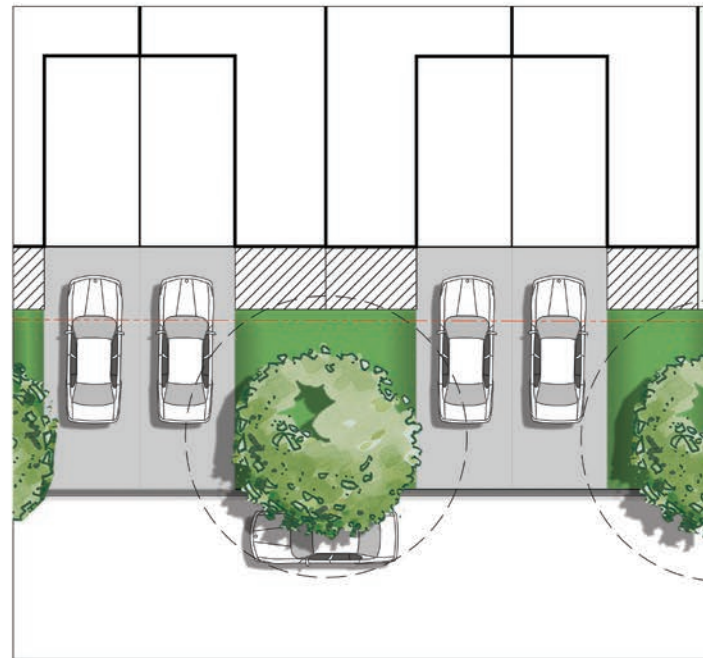
STACKED

Stacked Soil Volume:

- Length: 13.2m
- Width: 6.7m
- Depth: 1.5m

Less utility trenches (42m³)

Soil Volume = 91.2m³



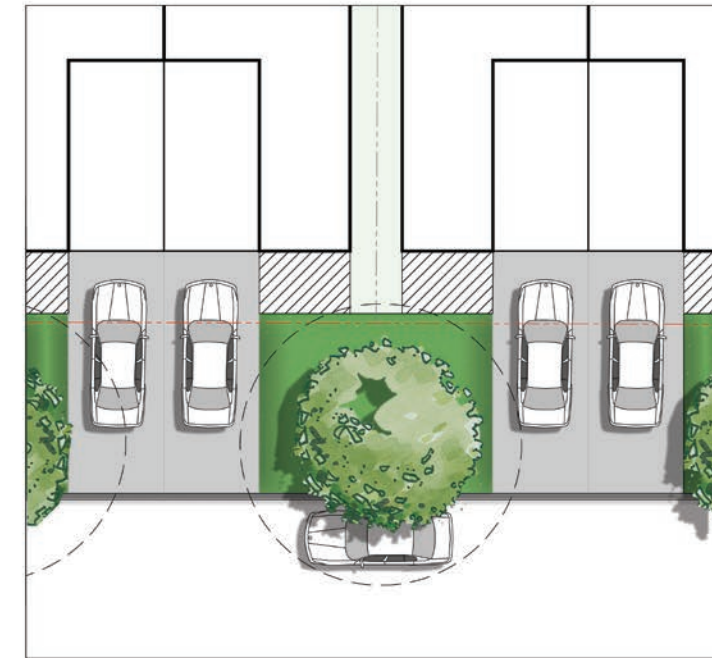
STANDARD TOWNHOUSE CONDITION 1

Detached Soil Volume:

- Length: 5.8m
- Width: 6.0m
- Depth: 1.5m

Less utility trenches (9m³)

Soil Volume = 42.45m³



STANDARD TOWNHOUSE CONDITION 2

Detached Soil Volume:

- Length: 5.8m
- Width: 7.6m
- Depth: 1.5m

Less utility trenches (11.4m³)

Soil Volume = 53.5m³

* 4.5m setback from tree to foundation must be provided for small to medium sized trees.

* Small trees must be provided with 25m³ soil volume.

* Medium trees must be provided with 30m³ soil volume.