

TOPOGRAPHIC SURVEY OF
PART OF LOT 21
CONCESSION 2 (OTTAWA FRONT)
GEOGRAPHIC TOWNSHIP OF GLOUCESTER
CITY OF OTTAWA

SCALE 1:1,500
0 5 10 20 30 metres
FAIRHALL, MOFFATT & WOODLAND LIMITED
OWNED LAND SURVEYORS

ELEVATION NOTES
1. ELEVATIONS SHOWN HEREIN ARE REFERRED TO GEODETIC DATUM
2. ELEVATIONS FOR MANHOLE COVERS AND CATCH BASINS HAVE TO
BE INDEPENDENTLY CONFIRMED BEFORE THEY CAN BE ACCEPTED
3. THE RESPONSIBILITY OF THE USER OF THIS INFORMATION TO
VERIFY THAT THE JOB REQUIREMENTS HAVE NOT BEEN ALTERED OR
AGREE WITH THE INFORMATION SHOWN ON THIS DRAWING.

UTILITY NOTES
1. THE SURVEYOR HAS CONDUCTED VISUAL INSPECTIONS OF
UNDERGROUND UTILITIES AND IT WILL BE THE RESPONSIBILITY
OF THE USER OF THIS INFORMATION TO VERIFY THE LOCATION,
DEPTH AND TYPE OF UTILITIES.
2. UNDERGROUND UTILITIES AS REPORTED ON THIS DRAWING, SUCH AS STORM
AND SANITARY SEWERS AND WATERMANS ARE NOT BASED ON AN ACTUAL FIELD
LOCATION SURVEY. THE LOCATION OF UTILITIES SHOWN ON THIS DRAWING
DATA OBTAINED FROM THE FOLLOWING SOURCES:
a) CITY OF OTTAWA
b) FROM A RECORD DATED OCTOBER 17/04, 2023
c) FROM A RECORD DATED OCTOBER 17/04, 2023
d) FROM A RECORD DATED OCTOBER 17/04, 2023
3. BEFORE ANY WORK INVOLVING PROBING, EXCAVATING, ETC., A FIELD
LOCATION SURVEY SHOULD BE CONDUCTED TO VERIFY THE LOCATION,
DEPTH AND TYPE OF UTILITIES.
4. AUTHORITY IS MANDATORY.

NOTES
1. BEARINGS AND DISTANCES REFERRED TO THE WESTERN LIMIT OF BLAIR PLACE
AND THE EASTERN LIMIT OF THE QUEENSWAY ARE BASED ON THE
2. THE SURVEY REPRESENTED BY THIS PLAN WAS COMPLETED ON OCT. 18, 2023.

LEGEND
SURVEY MONUMENT SET
STANDARD IRON BAR
SUT (SILVER) IRON BAR
CONCRETE PIN
WOODEN PIN
METAL
SET
DIA. (DIAMETER)
RADIUS
PROPERTY CENTER NUMBER
PIN
SANITARY SYSTEM MANHOLE
L-1 (L-1)
L-2 (L-2)
L-3 (L-3)
L-4 (L-4)
L-5 (L-5)
L-6 (L-6)
L-7 (L-7)
L-8 (L-8)
L-9 (L-9)
L-10 (L-10)
L-11 (L-11)
L-12 (L-12)
L-13 (L-13)
L-14 (L-14)
L-15 (L-15)
L-16 (L-16)
L-17 (L-17)
L-18 (L-18)
L-19 (L-19)
L-20 (L-20)
L-21 (L-21)
L-22 (L-22)
L-23 (L-23)
L-24 (L-24)
L-25 (L-25)
L-26 (L-26)
L-27 (L-27)
L-28 (L-28)
L-29 (L-29)
L-30 (L-30)
L-31 (L-31)
L-32 (L-32)
L-33 (L-33)
L-34 (L-34)
L-35 (L-35)
L-36 (L-36)
L-37 (L-37)
L-38 (L-38)
L-39 (L-39)
L-40 (L-40)
L-41 (L-41)
L-42 (L-42)
L-43 (L-43)
L-44 (L-44)
L-45 (L-45)
L-46 (L-46)
L-47 (L-47)
L-48 (L-48)
L-49 (L-49)
L-50 (L-50)
L-51 (L-51)
L-52 (L-52)
L-53 (L-53)
L-54 (L-54)
L-55 (L-55)
L-56 (L-56)
L-57 (L-57)
L-58 (L-58)
L-59 (L-59)
L-60 (L-60)
L-61 (L-61)
L-62 (L-62)
L-63 (L-63)
L-64 (L-64)
L-65 (L-65)
L-66 (L-66)
L-67 (L-67)
L-68 (L-68)
L-69 (L-69)
L-70 (L-70)
L-71 (L-71)
L-72 (L-72)
L-73 (L-73)
L-74 (L-74)
L-75 (L-75)
L-76 (L-76)
L-77 (L-77)
L-78 (L-78)
L-79 (L-79)
L-80 (L-80)
L-81 (L-81)
L-82 (L-82)
L-83 (L-83)
L-84 (L-84)
L-85 (L-85)
L-86 (L-86)
L-87 (L-87)
L-88 (L-88)
L-89 (L-89)
L-90 (L-90)
L-91 (L-91)
L-92 (L-92)
L-93 (L-93)
L-94 (L-94)
L-95 (L-95)
L-96 (L-96)
L-97 (L-97)
L-98 (L-98)
L-99 (L-99)
L-100 (L-100)

SUBMITTER'S CERTIFICATE
I CERTIFY THAT:
1. THE SURVEY WAS CONDUCTED IN ACCORDANCE WITH THE
REGULATIONS OF THE SURVEY ACT AND THE REGULATIONS MADE UNDER THEREIN.
2. THE SURVEY WAS COMPLETED ON OCTOBER 18, 2023.
DATE: _____
SIGNATURE: _____
NAME: JOHN H. CUTLER
ONTARIO LAND SURVEYOR

PROFESSIONAL SEAL
FAIRHALL, MOFFATT & WOODLAND LIMITED
OWNED LAND SURVEYORS
1000 SHEPPARD AVENUE EAST, SUITE 100
SCARBOROUGH, ONTARIO M1S 1T6
TEL: (416) 291-8888
WWW.FMW.LTD.CA

PROFESSIONAL SEAL
FAIRHALL, MOFFATT & WOODLAND LIMITED
OWNED LAND SURVEYORS
1000 SHEPPARD AVENUE EAST, SUITE 100
SCARBOROUGH, ONTARIO M1S 1T6
TEL: (416) 291-8888
WWW.FMW.LTD.CA

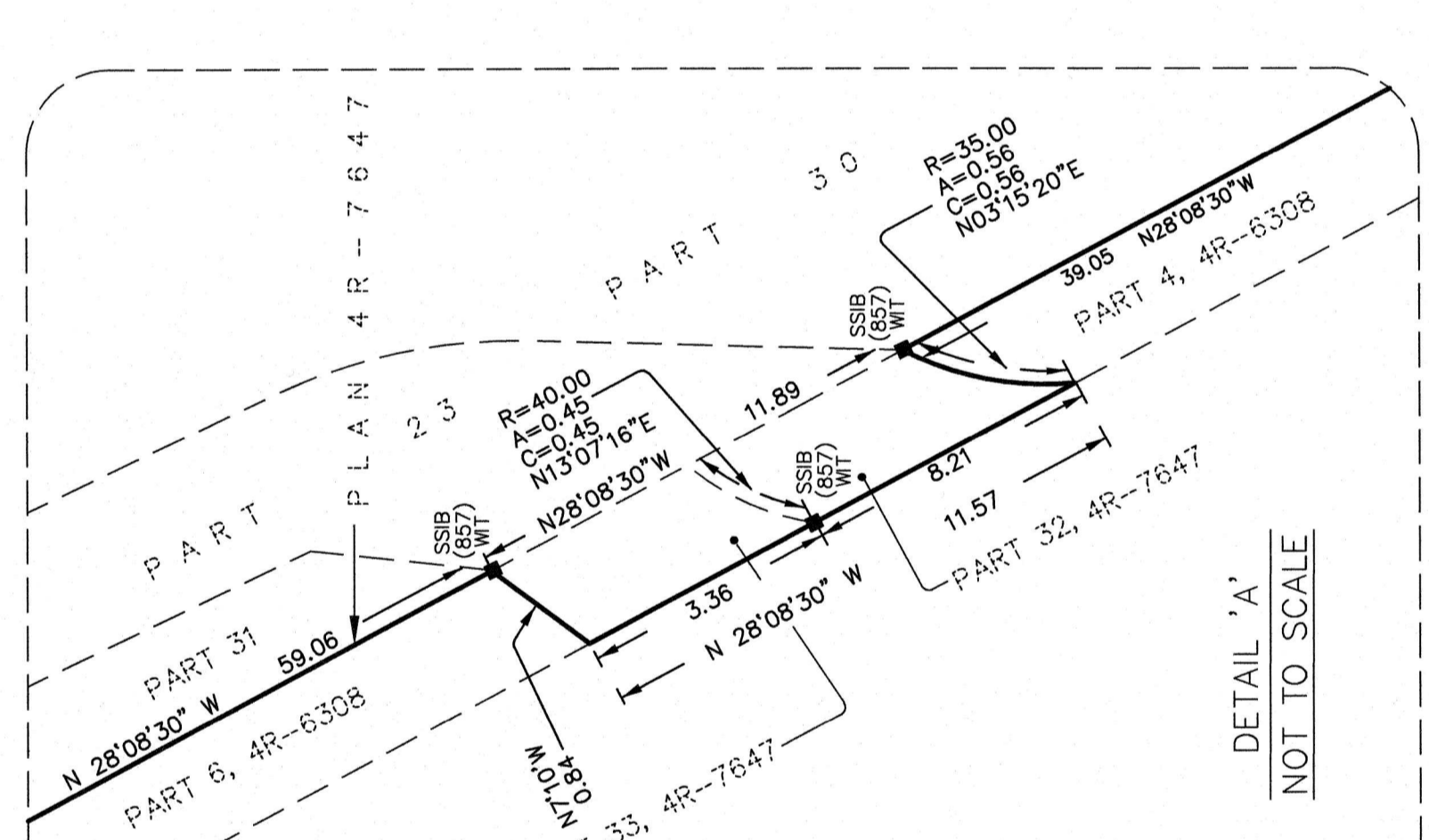
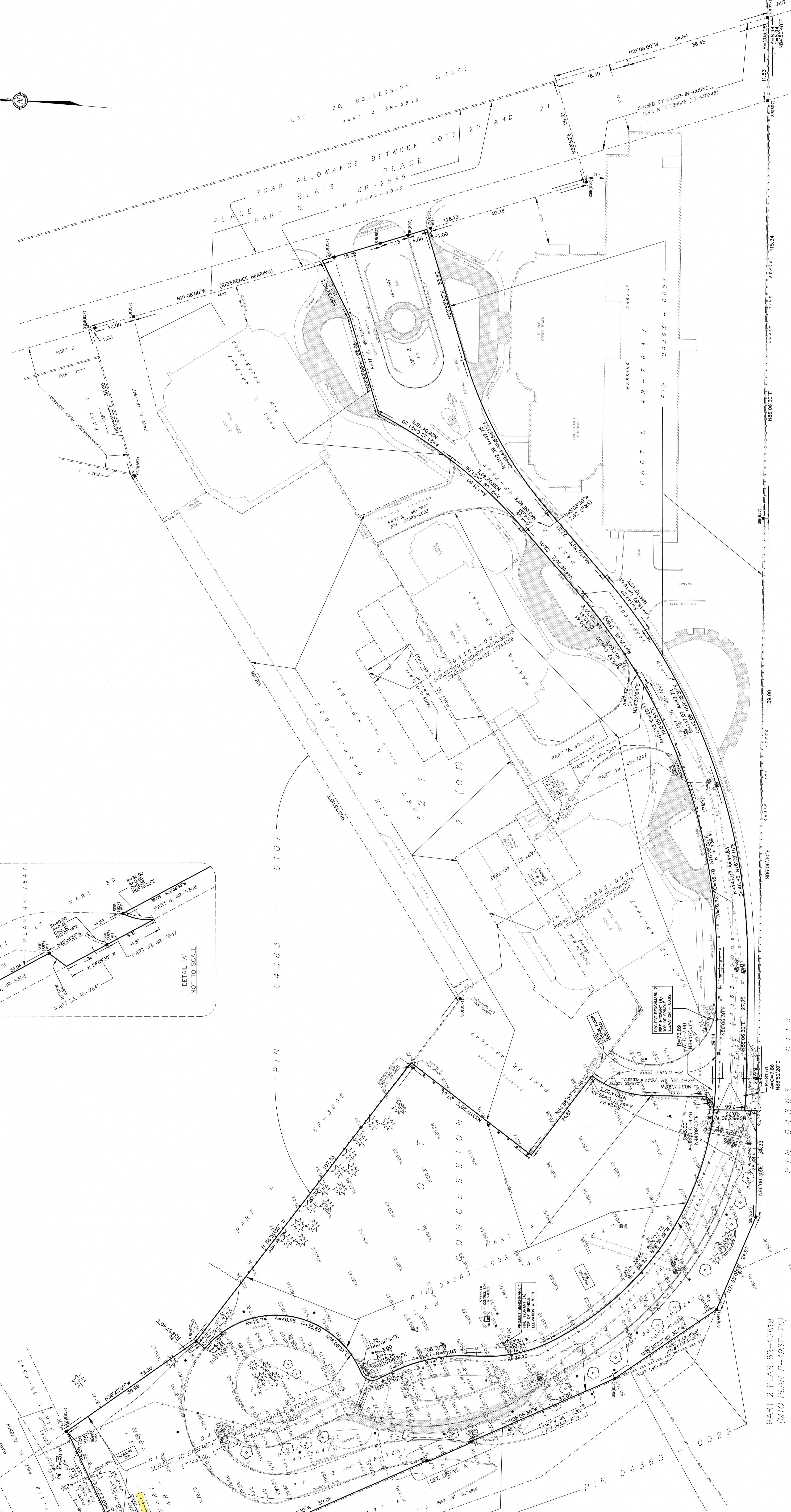
PROFESSIONAL SEAL
FAIRHALL, MOFFATT & WOODLAND LIMITED
OWNED LAND SURVEYORS
1000 SHEPPARD AVENUE EAST, SUITE 100
SCARBOROUGH, ONTARIO M1S 1T6
TEL: (416) 291-8888
WWW.FMW.LTD.CA

PROFESSIONAL SEAL
FAIRHALL, MOFFATT & WOODLAND LIMITED
OWNED LAND SURVEYORS
1000 SHEPPARD AVENUE EAST, SUITE 100
SCARBOROUGH, ONTARIO M1S 1T6
TEL: (416) 291-8888
WWW.FMW.LTD.CA

PROFESSIONAL SEAL
FAIRHALL, MOFFATT & WOODLAND LIMITED
OWNED LAND SURVEYORS
1000 SHEPPARD AVENUE EAST, SUITE 100
SCARBOROUGH, ONTARIO M1S 1T6
TEL: (416) 291-8888
WWW.FMW.LTD.CA

PROFESSIONAL SEAL
FAIRHALL, MOFFATT & WOODLAND LIMITED
OWNED LAND SURVEYORS
1000 SHEPPARD AVENUE EAST, SUITE 100
SCARBOROUGH, ONTARIO M1S 1T6
TEL: (416) 291-8888
WWW.FMW.LTD.CA

PROFESSIONAL SEAL
FAIRHALL, MOFFATT & WOODLAND LIMITED
OWNED LAND SURVEYORS
1000 SHEPPARD AVENUE EAST, SUITE 100
SCARBOROUGH, ONTARIO M1S 1T6
TEL: (416) 291-8888
WWW.FMW.LTD.CA



METRIC
DISTANCES AND ELEVATIONS SHOWN ON THIS PLAN ARE IN METRES
AND CAN BE CONVERTED TO FEET BY DIVIDING BY 0.3048

© COPYRIGHT 2023. REPRODUCTION, ALTERATION OR
DISTRIBUTION OF THIS PLAN WITHOUT THE WRITTEN CONSENT
OF FAIRHALL, MOFFATT & WOODLAND LIMITED IS PROHIBITED.