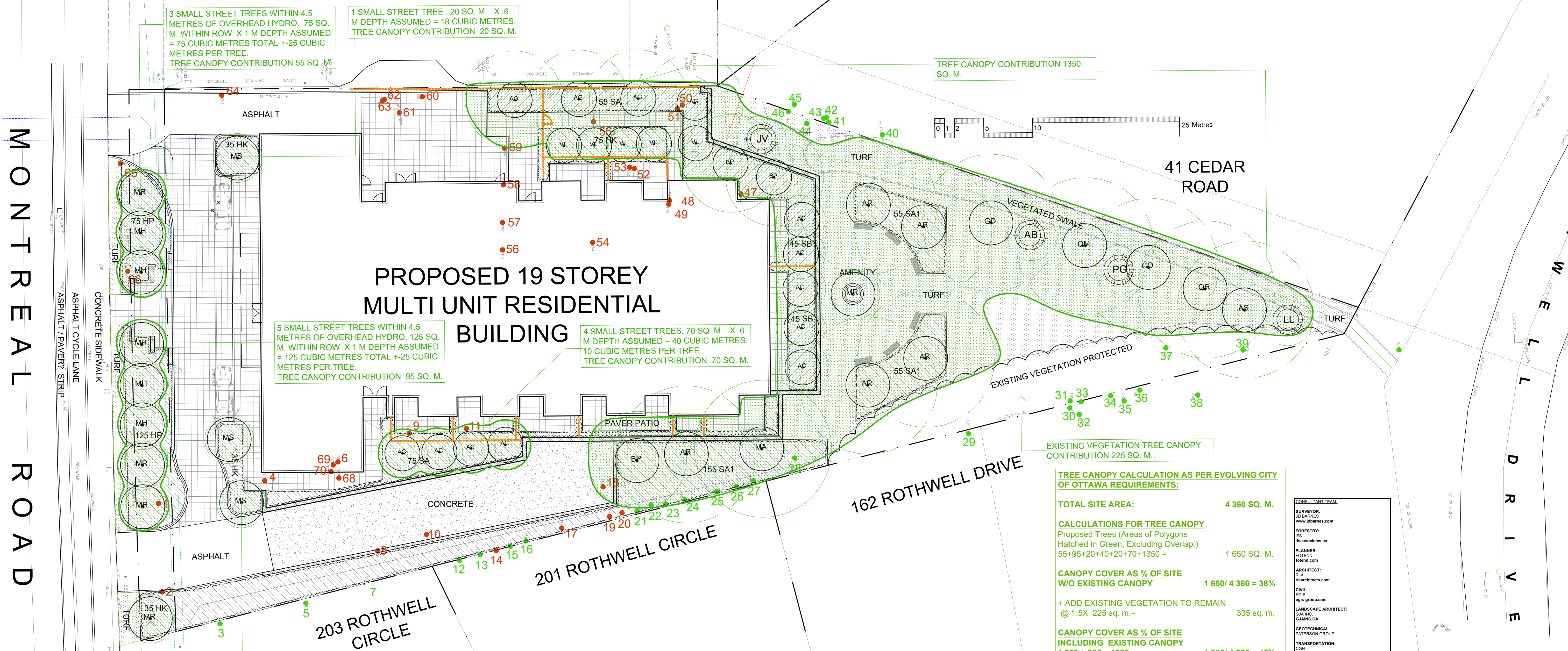


MONTREAL ROAD

Drawing Remains the Property of / Copyright Reserved by / Do Not Use or Reproduce Without Approval of Gino J. Aiello Landscape Architect / GJA INC.
 Use For Construction If Identified Contractor is Responsible for Verification of Site Locations of all Utilities. Report any Discrepancies Between Site and Drawing Immediately to GJA INC. Do NOT Proceed Until Clarified.



3 SMALL STREET TREES WITHIN 4.5 METRES OF OVERHEAD HYDRO. 75 SQ. M. WITHIN ROW X 1 M DEPTH ASSUMED = 75 CUBIC METRES TOTAL +25 CUBIC METRES PER TREE. TREE CANOPY CONTRIBUTION 55 SQ. M.

1 SMALL STREET TREE .20 SQ. M. X 6 M DEPTH ASSUMED = 18 CUBIC METRES. TREE CANOPY CONTRIBUTION 20 SQ. M.

TREE CANOPY CONTRIBUTION 1350 SQ. M.

5 SMALL STREET TREES WITHIN 4.5 METRES OF OVERHEAD HYDRO. 125 SQ. M. WITHIN ROW X 1 M DEPTH ASSUMED = 125 CUBIC METRES TOTAL +25 CUBIC METRES PER TREE. TREE CANOPY CONTRIBUTION 95 SQ. M.

4 SMALL STREET TREES. 70 SQ. M. X 6 M DEPTH ASSUMED = 40 CUBIC METRES. 10 CUBIC METRES PER TREE. TREE CANOPY CONTRIBUTION 70 SQ. M.

2 SMALL STREET TREES. 20 SQ. M. X 6 M DEPTH ASSUMED = 18 CUBIC METRES. 9 CUBIC METRES PER TREE. TREE CANOPY CONTRIBUTION 40 SQ. M.

1 SMALL STREET TREE WITHIN 4.5 METRES OF OVERHEAD HYDRO. 30 SQ. M. WITHIN ROW X 1 M DEPTH ASSUMED = 30 CUBIC METRES. TREE CANOPY CONTRIBUTION 20 SQ. M.

****ADDITIONAL LANDSCAPE PLAN NOTES****
 LANDSCAPING ON CITY OF OTTAWA PROPERTY TO BE TO CITY OF OTTAWA DETAILS / STANDARDS. L1-L6, L17
 TREES ON CITY OF OTTAWA PROPERTY TO CARRY A 2 YEAR WARRANTY. REFER TO SITE PLAN FOR LOCATIONS AND DIMENSIONS OF BUILDING, ROADS, PARKING, CURBS, SETBACKS, EASEMENTS, LEGAL DESCRIPTION EXISTING AND PROPOSED SITE. SERVICING IS SHOWN ON THE LANDSCAPE PLAN TO PROVIDE AN AWARENESS TO REVIEWERS AND CONTRACTORS OF THEIR INTENDED LOCATION AND SEPARATION OF TREES/SERVICES/PROPOSED LANDSCAPING. DETERMINE AS BUILT LOCATIONS OF SERVICES PRIOR TO PLANTING AND ADJUST ACCORDINGLY TO RESPECT REQUIRED SETBACKS

TURF AREAS TO BE SOD C/W 150MM DEPTH TOPSOIL ON APPROVED SUBGRADE | SOD TO BE #1 GRADE TURFGRASS NURSERY SOD per NSGA - Fine Fescue/Kentucky Bluegrass Sod | PLANTING MIX TO BE APPROVED BY LANDSCAPE ARCHITECT | PLANT MATERIAL TO MEET CNLA STANDARDS/BE APPROVED BY LANDSCAPE ARCHITECT PRIOR TO PLANTING | ALL MATERIALS & WORK TO BE MAINTAINED UNTIL FINAL ACCEPTANCE. (MOWING TURF, WEEDING BEDS, WATERING TURF & PLANTS) & INCLUDE 1 YEAR WARRANTY FROM DATE OF FINAL ACCEPTANCE | PROVIDE WATERING OF ALL PLANT MATERIAL AS REQUIRED FOR PROPER ESTABLISHMENT, UNTIL END OF WARRANTY PERIOD | REFER TO CIVIL ENGINEER'S DRAWING FOR ELEVATIONS / GRADING |
 The Landscape Plan is to be read in conjunction with the grading, servicing, site and survey plan | Bare root material to be planted in season only | All plant material locations to be staked on site by the landscape contractor and checked by the landscape architect prior to planting | All trees to be preserved on or directly adjacent to the site will be protected | Plant material are to be installed a minimum of 3.0m away from any part of any hydro transformer, 3.0m corridor between a fire hydrant and the curb, a 2.5m radius beside or behind a fire hydrant, 2.0m from any servicing/utility line or structure |

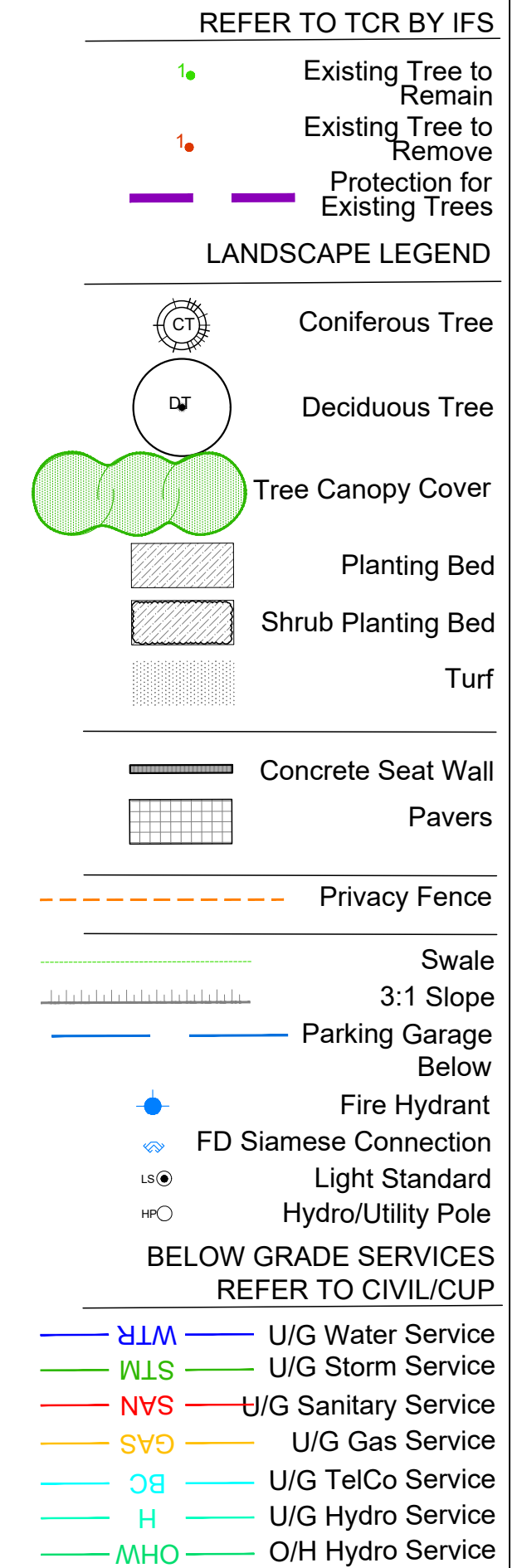
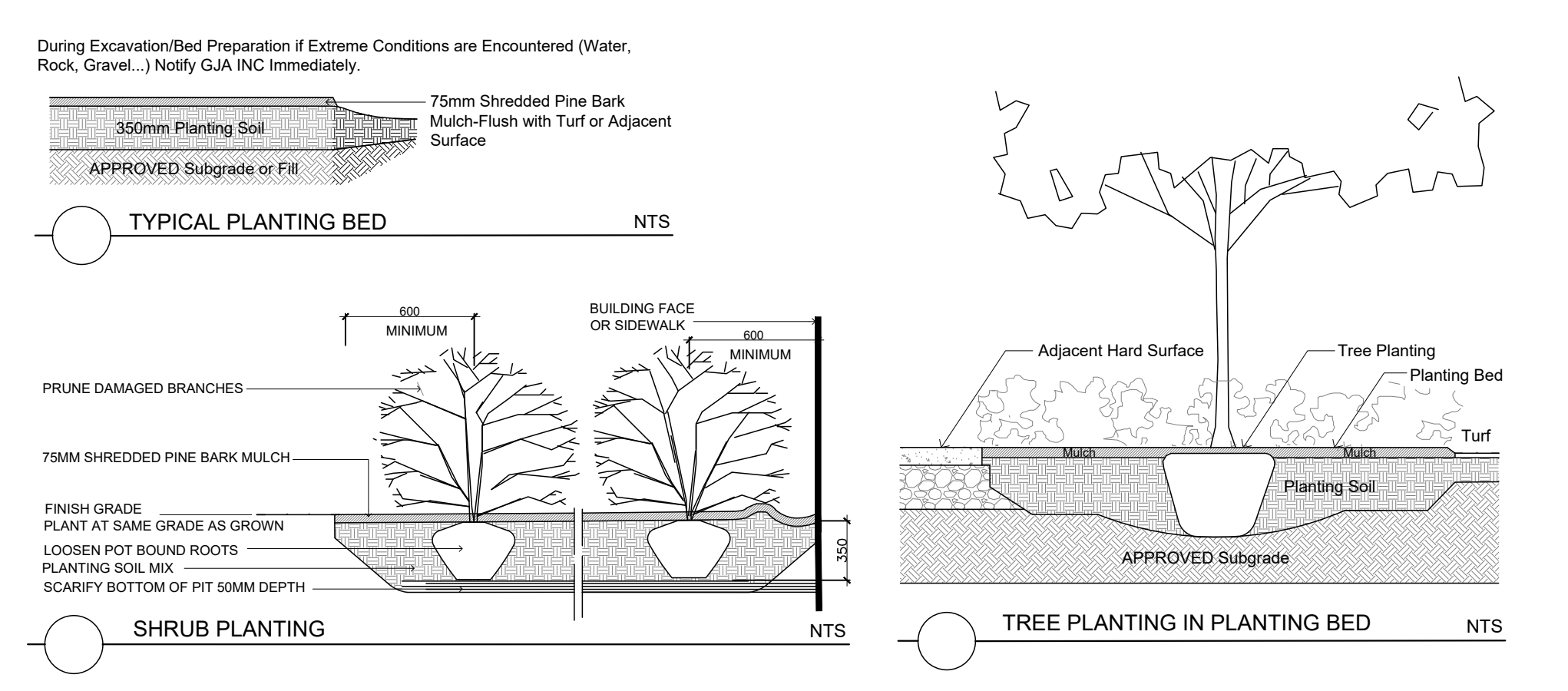
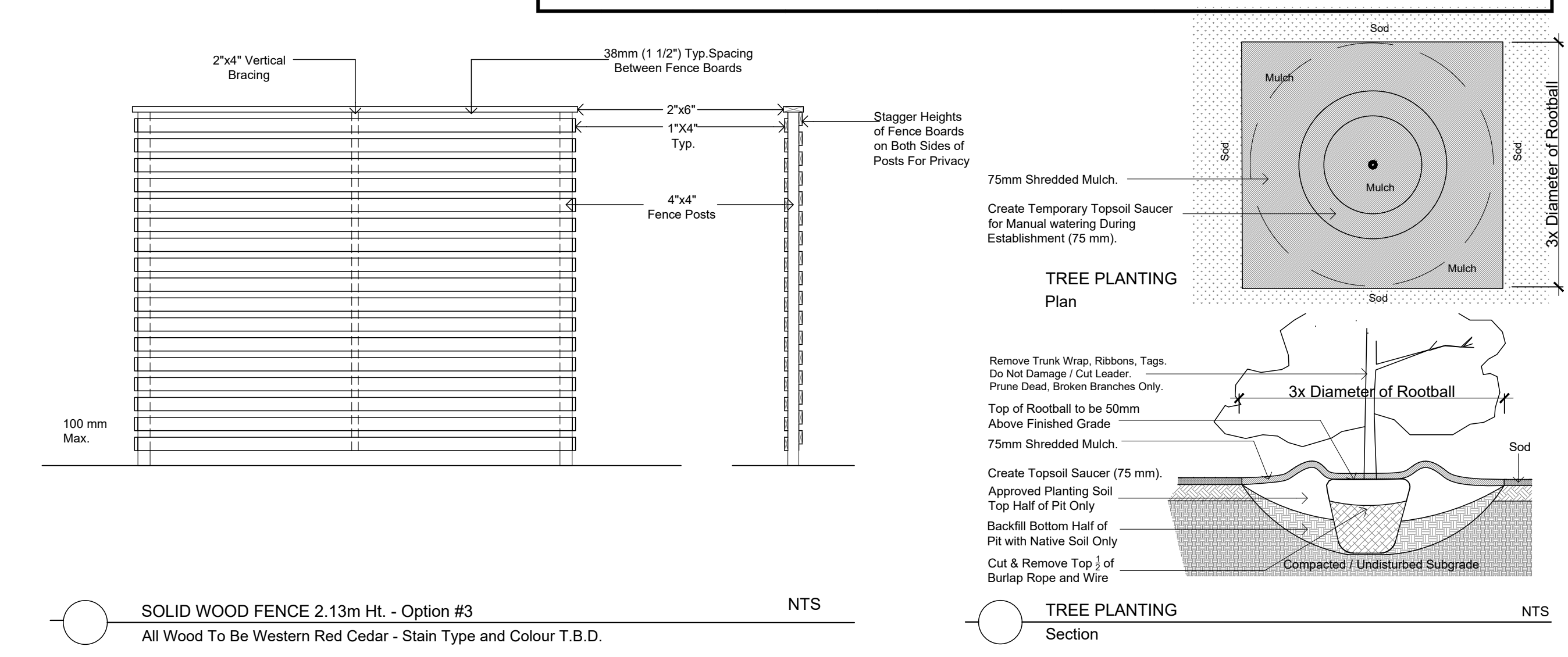
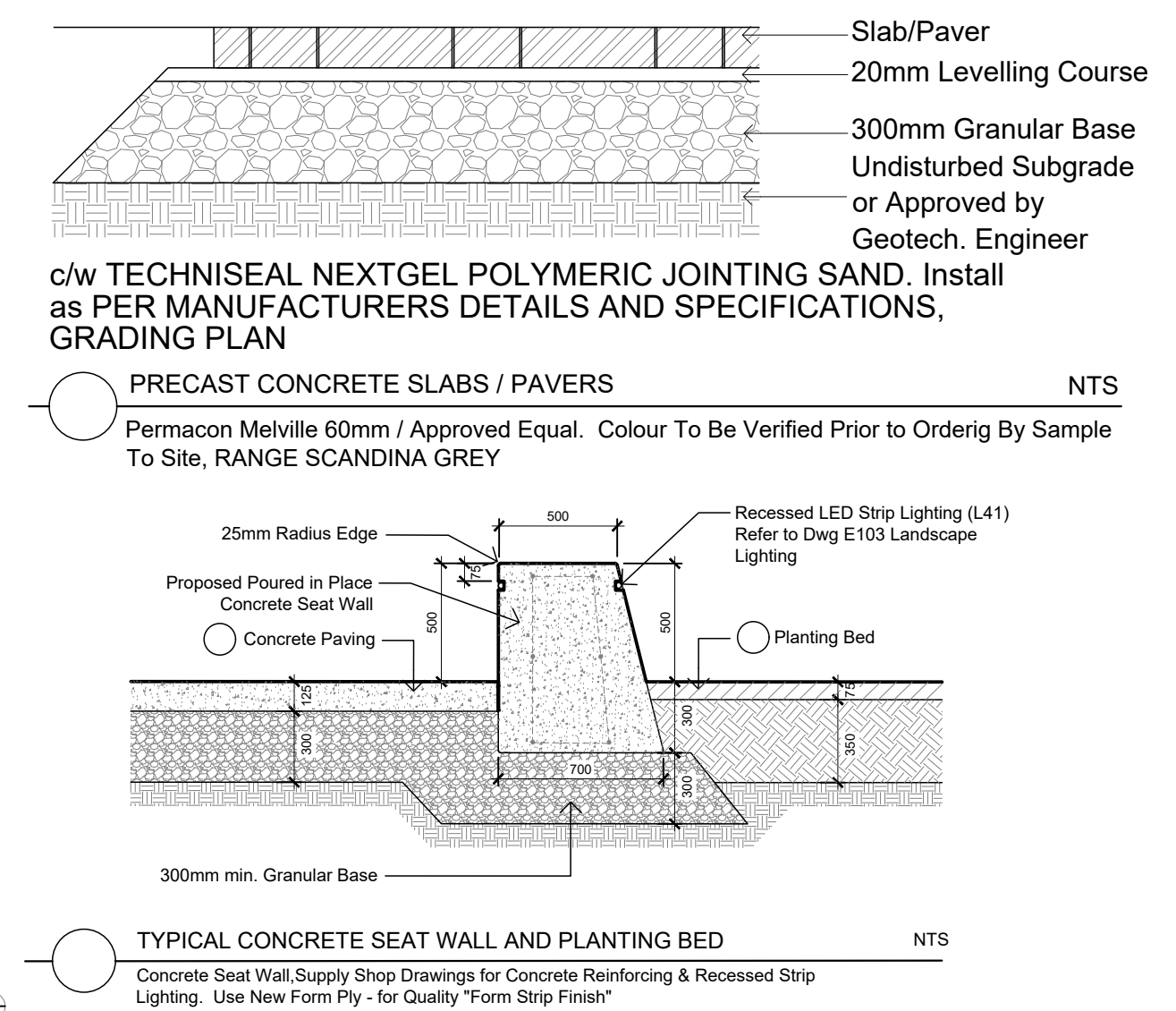
Code	Qty.	Botanical Name	Common Name	Size	Condition	NATIVE
HK	150	Hypericum kalmianum	Kalm St. John's Wort	30cm Ht.	Pot	YES
HP	200	Hypericum prolificum	Shrubby St. John's Wort	40cm Ht.	Pot	YES
SA1	275	Symphoricarpos albus	Snowberry	50cm Ht.	Pot	YES
SA	150	Spiraea alba	Meadowsweet	50cm Ht.	Pot	YES
SB	100	Spiraea bumalda 'Dart's Red'	Dart's Red Spirea	40cm Ht.	Pot	

Additional Material not Quantified on L1 from above and all Items Below to be Located on Site by GJA INC.

Code	Qty.	Botanical Name	Common Name	Condition
AU	75	Arctostaphylos Uva Ursi	Bearberry	30cm spr Pot YES
GM	125	Geranium macrorrhizum	Bigroot Geranium	9cm Pot
GR	125	Geranium psilostemon 'Gerwat'	Rozanne Geranium	9cm Pot
PM	35	Pinus mugo var. pumilio	Mugho Pine	30cm spr Pot
TCm	35	Taxus cuspidata 'Monlooo'	Emerald Spreader Yew	30cm spr Pot
PV	95	Panicum virgatum	Switch Grass	10CM POT YES

TREE SCHEDULE 1815 MONTREAL ROAD MULTI UNIT RESIDENTIAL

CODE	QUANTITY	BOTANICAL NAME	COMMON NAME	B&B SPECIMEN	NATIVE TO CANADA	FORECASTED SPREAD as per City of Ottawa Forestry	Canopy Cover Contribution/Tree in Square Metres	
	PRIVATE	PUBLIC				DIAMETER	RADIUS	
AC	9	0	Amelanchier canadensis	Tree Serviceberry	YES	3.0m	1.5m	7.0 sq. m.
AR	5	0	Acer rubrum	Red Maple	YES	10.0m	5.0m	78.5 sq. m.
AS	1	0	Acer saccharum	Sugar Maple	YES	14.0m	7.0m	154.0 sq. m.
AG	5	0	Aesculus glabra	Ohio Buckeye	YES	10.0m	5.0m	78.5 sq. m.
BP	3	0	Betula papyrifera	Paper Birch	YES	10.0m	5.0m	78.5 sq. m.
CO	1	0	Celtis occidentalis	Common Hackberry	YES	14.0m	7.0m	154.0 sq. m.
GD	1	0	Gymnocladus dioicus	Kentucky Coffee Tree	YES	14.0m	7.0m	154.0 sq. m.
MA	1	0	Magnolia acuminata	Cucumber Magnolia	YES	14.0m	7.0m	154.0 sq. m.
MH	0	5	Malus 'Harvest Gold'	Harvest Gold Crabapple		3.0m	1.5m	7.0 sq. m.
MR	1	4	Malus 'Red Splendor'	Red Splendor Crabapple		5.0m	2.5m	20.0 sq. m.
MS	3	0	Malus 'Sutyzan'	Sugar Tyme Crabapple		3.0m	1.5m	7.0 sq. m.
QM	1	0	Quercus macrocarpa	Bur Oak	YES	14.0m	7.0m	154.0 sq. m.
QR	1	0	Quercus rubra	Red Oak	YES	14.0m	7.0m	154.0 sq. m.
TA	1	0	Tilia americana	Basswood	YES	14.0m	7.0m	154.0 sq. m.
VL	5	0	Viburnum lentago	Nannyberry	YES	3.0m	1.5m	7.0 sq. m.
TOTALS	29	9						
AB	1	0	Abies balsamea	Balsam Fir	YES	5.0m	2.5m	20.0 sq. m.
JV	1	0	Juniperus virginiana	Eastern Red Cedar	YES	3.0m	1.5m	7.0 sq. m.
LL	1	0	Larix laricina	Eastern Larch / Tamarack	YES	5.0m	2.5m	20.0 sq. m.
PS	1	0	Pinus strobus	White Pine	YES	10.0m	5.0m	78.5 sq. m.



1	MUNICIPAL REVIEW	2024 12 16
0	REVISION/COORDINATION	2024 11 00
#	Revision	Date

PROPERTY OWNER
 14193679 CANADA INC.
 1815 MONTREAL ROAD
 DEVELOPMENTS LP
 1606 Prolix Drive Ottawa K4A 1T5

GJA INC.
 GINO J. AIELLO | LANDSCAPE ARCHITECT
 GJAL.COM | 613 286 5130 | GINO@GJAL.COM
 1155 BURNHAMTHORPE RD UNIT #11 | OTTAWA ONTARIO | K1T 5Z2

19 Storey Multi Unit Residential
 1815 Montreal Road Ottawa

Landscape Plan
 L1
 Scale: 1:200
 CITY PLANNING FILE #