

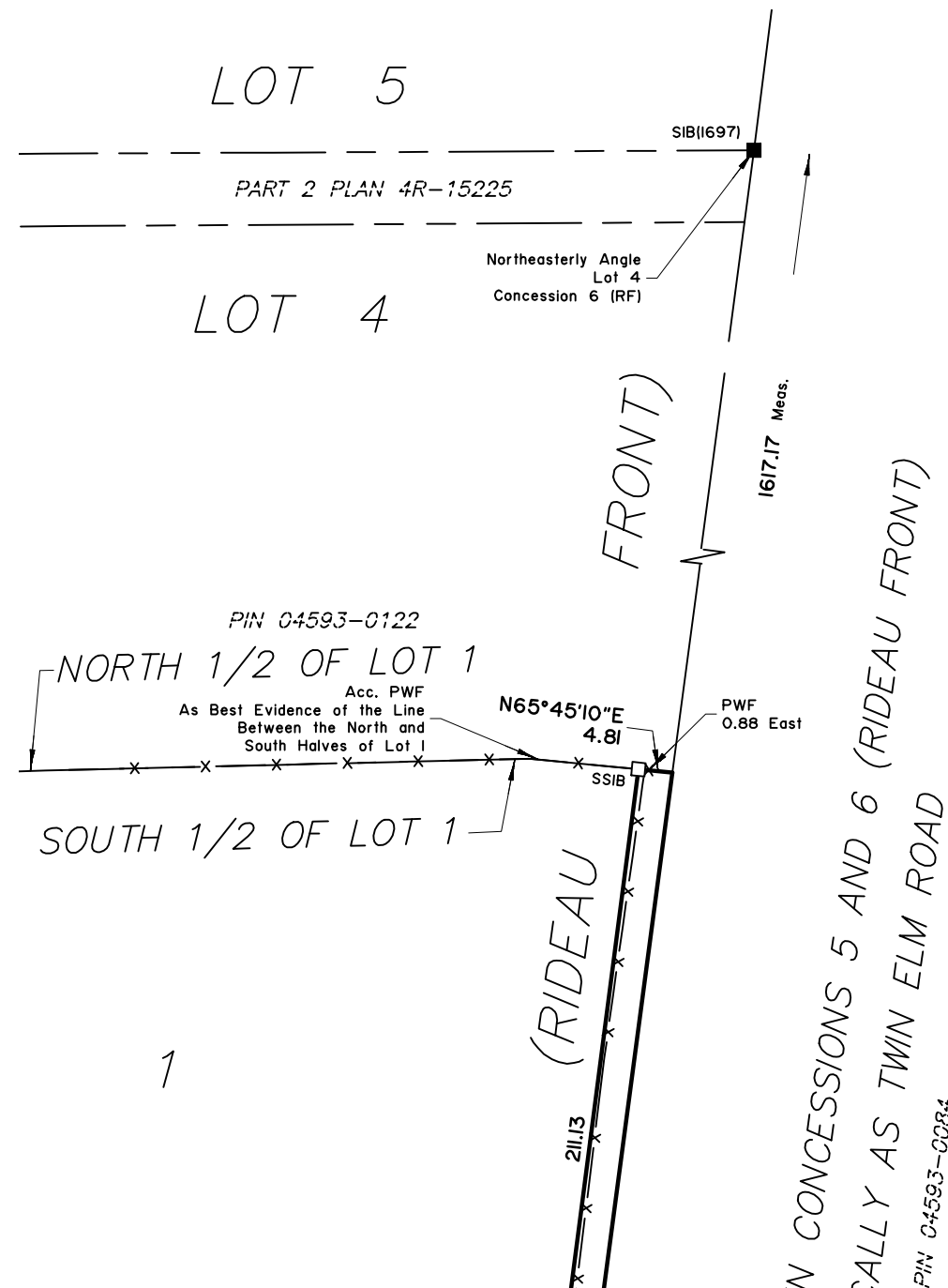
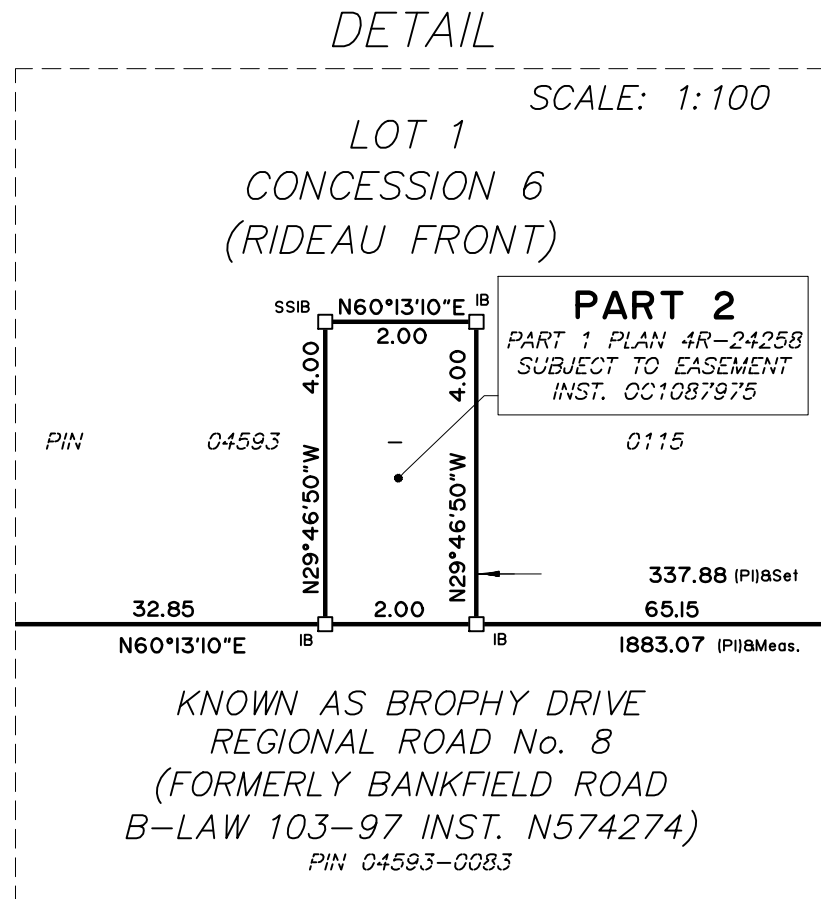
CO-ORDINATE NOTES

CO-ORDINATES ARE DERIVED FROM PPP (PRECISE POINT POSITIONING) GPS OBSERVATIONS AND WERE TRANSFORMED FROM UTM ZONE 18 (CSRS)(2010) TO MTM ZONE 9 (CSRS)(2010) USING THE GOVERNMENT OF CANADA TRX COORDINATE TRANSFORMATION TOOL.

COORDINATES ARE TO URBAN ACCURACY PER SECTION 14(2) OF O.REG 216/10.

COORDINATES CANNOT, IN THEMSELVES, BE USED TO RE-ESTABLISH CORNERS OR BOUNDARIES SHOWN ON THIS PLAN.

POINT ID	NORTHING	EASTING
A	5004744.76	359089.91
B	5005834.85	360992.16



PLAN 4R-36624

Received and deposited

January 16<sup>th</sup>, 2025

Mary Beth Ouellette

Representative for the  
Land Registrar for the  
Land Titles Division of  
Ottawa-carleton (No.4)

SCHEDULE

PART	LOT	CONCESSION	PIN
1			
2	PART OF 1	6 (RIDEAU FRONT)	PART OF 04593-0115
3			

PART 2 IS SUBJECT TO EASEMENT INST. OC1087975

PLAN OF SURVEY OF  
PART OF LOT 1  
CONCESSION 6 (RIDEAU FRONT)  
GEOGRAPHIC TOWNSHIP OF NEPEAN  
CITY OF OTTAWA

MONUMENT-URSO SURVEYING LTD.

SCALE 1 : 1000



The intended plot size of the plan is 610 mm in width by 457 mm in height when plotted at a scale of 1:1000.

METRIC

DISTANCES AND COORDINATES SHOWN ON THIS PLAN ARE IN METRES AND CAN BE CONVERTED TO FEET BY DIVIDING BY 0.3048.

SURVEYOR'S CERTIFICATE

I CERTIFY THAT :

- THIS SURVEY AND PLAN ARE CORRECT AND IN ACCORDANCE WITH THE SURVEYS ACT, THE SURVEYORS ACT, THE LAND TITLES ACT AND THE REGULATIONS MADE UNDER THEM.
- THE SURVEY WAS COMPLETED ON DECEMBER 13th, 2024.

January 13th, 2025  
DATE

COEL STOREY  
ONTARIO LAND SURVEYOR

This plan of survey relates to AOLS Plan Submission Form Number V-93128

LEGEND

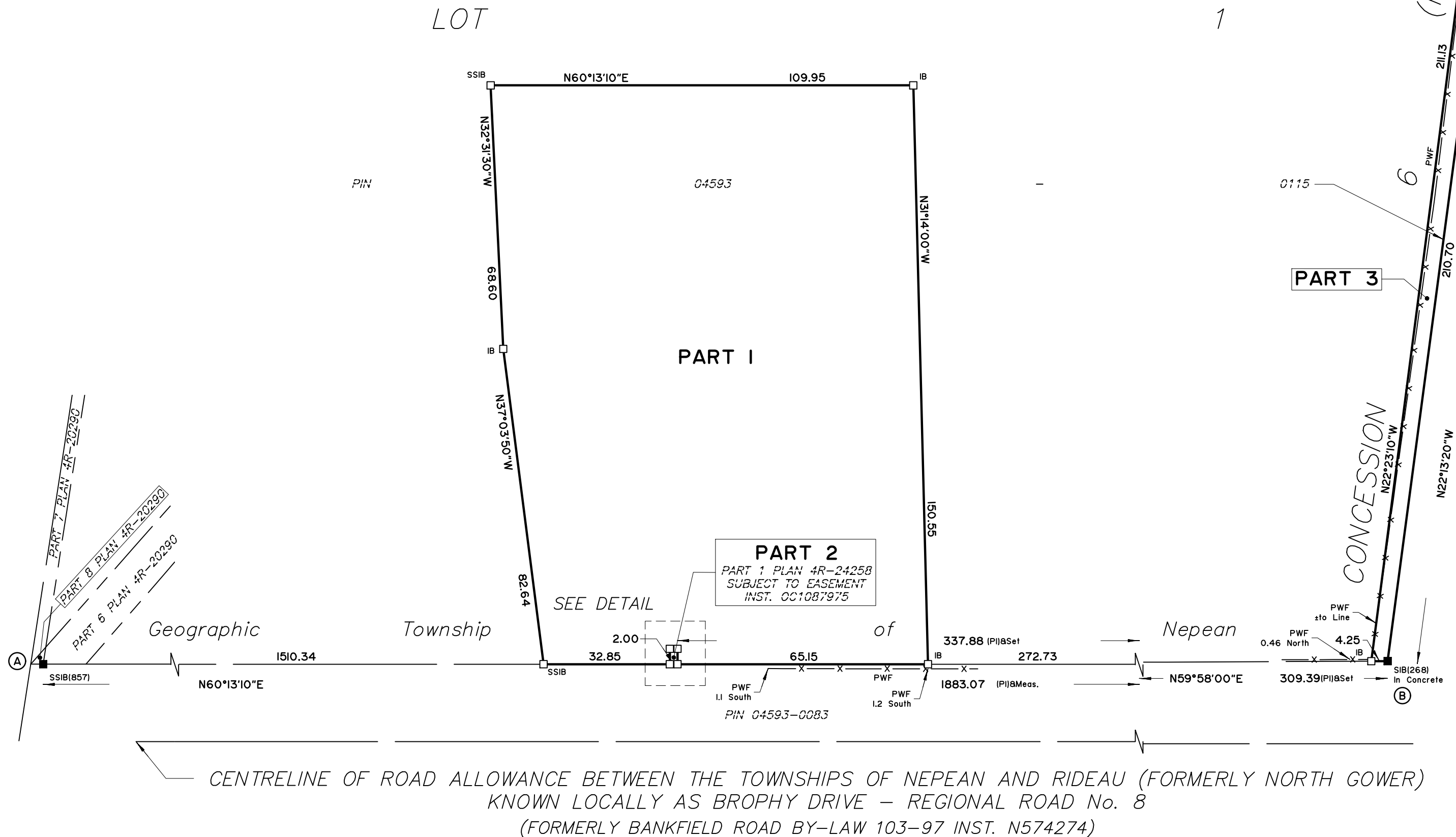
■	DENOTES	FOUND SURVEY MONUMENT
□	"	PLANTED SURVEY MONUMENT
IB	"	IRON BAR
SIB	"	STANDARD IRON BAR
SSIB	"	SHORT STANDARD IRON BAR
PB	"	PLASTIC BAR
IBØ	"	ROUND IRON BAR
(WIT)	"	WITNESS
ACC.	"	ACCEPTED
MEAS. (1476)	"	MEASURED
(P1)	"	MONUMENT-URSO SURVEYING LTD. PLAN 4R-24258
PWF	"	POST AND WIRE FENCE

BEARING NOTES

BEARINGS ARE MTM GRID, DERIVED FROM RTK (REAL-TIME KINEMATIC) GPS OBSERVATIONS AND ARE REFERRED TO THE CENTRAL MERIDIAN (76°30' WEST LONGITUDE) OF MTM ZONE 9 NAD83 (CSRS) (2010.0).

FOR BEARING COMPARISONS, A ROTATION OF 00°12'00" CLOCKWISE WAS APPLIED TO (P1) TO CONVERT TO GRID BEARINGS.

DISTANCES ON THIS PLAN ARE HORIZONTAL GROUND DISTANCES AND CAN BE CONVERTED TO GRID DISTANCES BY MULTIPLYING BY THE AVERAGE COMBINED SCALE FACTOR OF 0.999904



Monument-Urso Surveying Ltd.  
Ontario Land Surveyors | Canada Land Surveyors  
1755 WOODWARD DRIVE  
OTTAWA, ON K2C 0P9  
536 C FOURTH LINE EAST  
SAULT STE. MARIE ON, P6A 6J8  
TEL: (613) 800-1583  
TEL: (705) 254-7851  
FAX: (705) 254-5571

DRAWN: CS	FIELD: AC/RH	FILE No:
PROCESSED: CS	CHECKED: CS	24-0202 59408BrophyDr R.D1