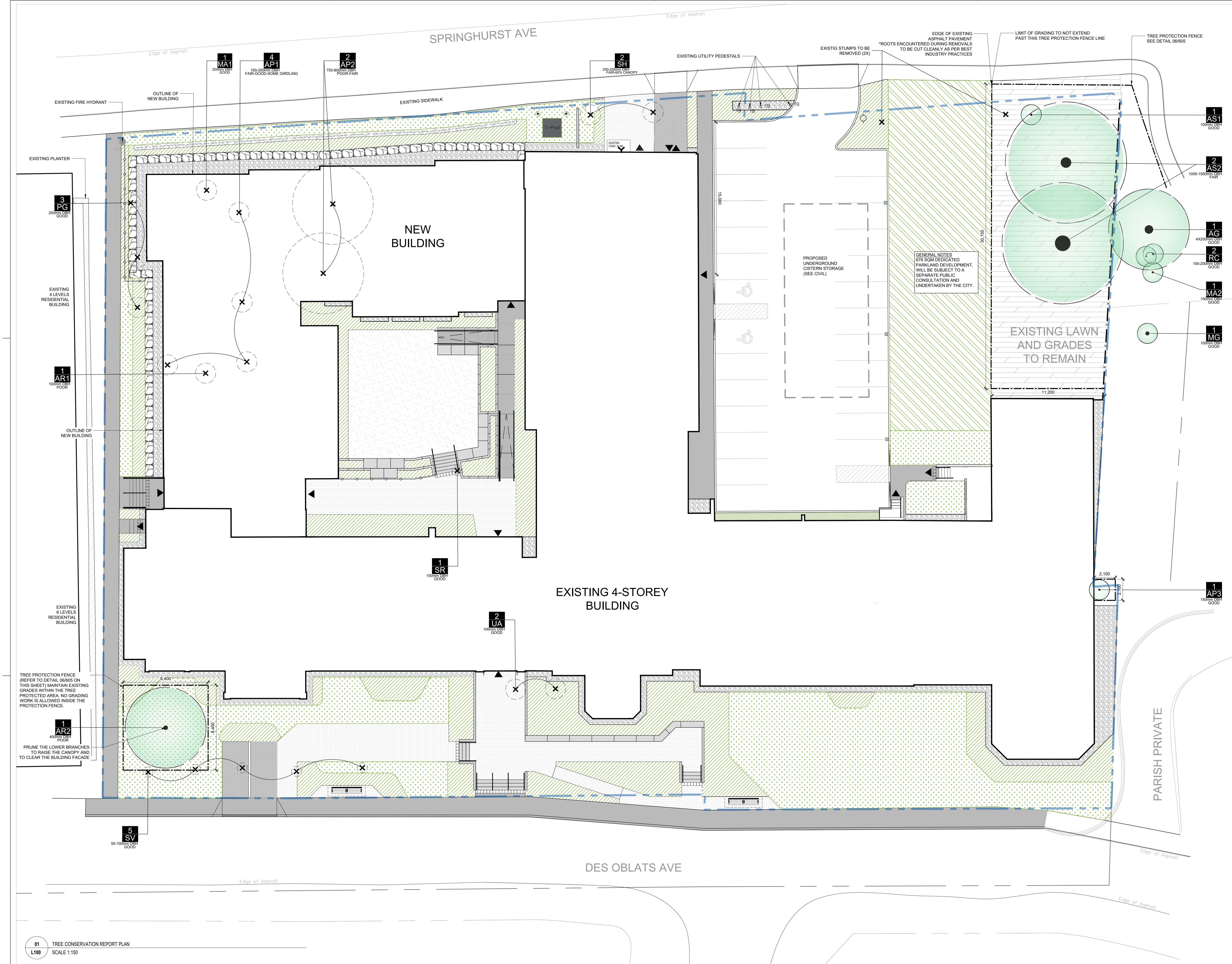


File Path: \\bushdesk\Docs\724\0353 - 15-17 Des Oblats Ottawa\24-0353_Oblats_AR_Building.knw v24.knt



EXISTING TREE LIST

KEY	QTY	BOTANICAL NAME	COMMON NAME	SIZE	CONDITION	REMARKS	OWNERSHIP
DECIDUOUS TREES							
AG	1	Acer ginnala	Amur Maple	4X200mm DBH	Good	To remain	102 Springhurst Ave
AP1	4	Acer platanoides	Norway Maple	100-200mm DBH	Fair-Good-some girdling	To be remove	15 Oblats Ave
AP2	2	Acer platanoides	Norway Maple	750-800mm DBH	Poor-Fair	To be remove	15 Oblats Ave
AP3	1	Acer platanoides	Norway Maple	150mm DBH	Good	To remain	102 Springhurst Ave
AR1	1	Acer rubrum	Red Maple	100mm DBH	Poor	To be remove	15 Oblats Ave
AR2	1	Acer rubrum	Red Maple	400mm DBH	Poor	To remain	15 Oblats Ave
AS1	1	Acer saccharinum 'Laciniata'	Cutleaf Silver Maple	100mm DBH	Good	To remain	15 Oblats Ave
AS2	2	Acer saccharinum 'Laciniata'	Cutleaf Silver Maple	1000-1500mm DBH	Fair	To remain	15 Oblats Ave
MA1	1	Malus spp.	Crabapple	200mm DBH	Good	To be remove	15 Oblats Ave
MA2	1	Malus spp.	Crabapple	150mm DBH	Good	To remain	102 Springhurst Ave
MG	1	Magnolia spp.	Magnolia	100mm DBH	Good	To remain	102 Springhurst Ave
RC	2	Rhamnus cathartica	Common Buckthorn	100-200 DBH	Good	To remain	102 Springhurst Ave
SH	2	Sorbus x hybrida	Oakleaf Mountain Ash	200-250mm DBH	Fair-60% canopy	To be remove	15 Oblats Ave
SR	1	Syringa reticulata	Japanese Tree Lilac	100mm DBH	Good	To be remove	15 Oblats Ave
SV	5	Syringa vulgaris	Common Purple Lilac	50-100mm DBH	Good	To be remove	15 Oblats Ave
UA	2	Ulmus americana	American Elm	100mm DBH	Good	To be remove	15 Oblats Ave
CONIFEROUS TREES							
PG	3	Picea glauca	White Spruce	200mm DBH	Good	To be remove	15 Oblats Ave

GENERAL NOTES:

- THE CONTRACTOR IS RESPONSIBLE FOR FAMILIARIZING THEMSELVES WITH LIMITS OF CONSTRUCTION PRIOR TO THE COMMENCEMENT OF ANY WORK ON THE SITE. THE CONTRACTOR IS TO CONTACT CONTRACT ADMINISTRATOR IN UNCERTAINTY.
- THE CONTRACTOR IS RESPONSIBLE FOR LOCATION AND STAKING OF ALL UTILITIES PRIOR TO WORK COMMENCING ON THE SITE. CONTRACTOR SHALL LOCATE PLANT MATERIAL IN ACCORDANCE WITH UTILITY STREET REQUIREMENTS.
- CONTRACTOR IS RESPONSIBLE FOR DAMAGE TO ALL UNDERGROUND SERVICES INCLUDING LIGHT STANDARDS AND ELECTRICAL LINES.
- IT IS THE RESPONSIBILITY OF THE CONTRACTOR TO CALL A PRIVATE LOCATING COMPANY AND PAY ALL COSTS RELATING TO ALL SERVICES NOT STAKED OUT BY GAS, HYDRO, BELL, AND CABLE.
- THE CONTRACTOR SHALL VISIT THE SITE TO CONFIRM SITE CONDITIONS PRIOR TO SUBMITTING BIDS.
- THE CONTRACTOR SHALL REMOVE ALL DEBRIS, GARBAGE AND SURPLUS MATERIALS FROM THE SITE AT THE END OF EACH DAY. THE SITE IS TO BE KEPT CLEAN.
- UPON FINAL COMPLETION OF THE PROJECT, ALL WORKMANSHIP AND MATERIALS ARE TO BE GUARANTEED FOR ONE (1) FULL YEAR, UNLESS NOTED OTHERWISE. ALL WORKMANSHIP IS TO BE COMPLETED TO THE STANDARDS OF THE ONTARIO LANDSCAPE CONTRACTORS ASSOCIATION.
- ALL CONSTRUCTION TO BE CARRIED OUT IN ACCORDANCE WITH THE MOST CURRENT DESIGN STANDARDS, CRITERIA, AND SPECIFICATIONS FORM THE ONTARIO BUILDING CODE, THE ONTARIO PROVINCIAL STANDARDS DETAIL, THE ONTARIO PROVINCIAL STANDARD SPECIFICATION AND LANDSCAPE ONTARIO.
- CONTRACTOR TO ENSURE PROPER DEPTH OF EXCAVATIONS TO ACCOMMODATE HARD SURFACE AND LANDSCAPING AS SPECIFIED ON THESE DRAWINGS.
- TREE PRESERVATION AND ADJACENT TO BE REVIEWED WITH CONTRACTOR PRIOR TO START OF CONSTRUCTION.

ENVIRONMENTAL NOTES

- THE CONTRACTOR SHALL ADHERE TO SPECIAL PROVISION REQUIREMENTS FOR THE MANAGEMENT OF ON-SITE MATERIAL AS PER THE DRAWINGS AND SPECIAL PROVISIONS OF THIS CONTRACT.
- THE CONTRACTOR SHALL ENSURE THAT ALL REASONABLE MEASURES ARE TAKEN TO LIMIT GROUND DISTURBANCE CAUSED BY HEAVY EQUIPMENT, GRADE, AND THAT EROSION AND SEDIMENT CONTROLS WILL BE INSTITUTED ON DISTURBED AREAS. NO SUBSURFACE GROUND DISTURBING EQUIPMENT SHALL BE USED BY CONSTRUCTION FORCES EXCEPT ON ACCESS ROADS.
- ALL CONSTRUCTION ACTIVITIES WITHIN THE LIMIT OF CONSTRUCTION SHALL BE EXECUTED IN SUCH A MANNER SO AS TO PREVENT THE ENTRY OF CHEMICALS, PETROLEUM PRODUCTS, DEBRIS, RUBBLE, CONCRETE OR OTHER DILUTED SUBSTANCES INTO LANDSCAPE AREAS.
- THE CONTRACTOR WILL BE RESPONSIBLE FOR DAILY INSPECTION, CLEANUP, AND PROPER LABELING, STORAGE, AND DISPOSAL OF ALL REFUSE AND DEBRIS PRODUCED BY OPERATIONS AND EMPLOYEES. SUITABLE REFUSE COLLECTING FACILITIES WILL BE REQUIRED. ONLY THOSE DISPOSAL AREAS DESIGNATED BY THE OWNER, CONTRACT ADMINISTRATOR SHALL BE USED. DISPOSAL CONTAINERS SUCH AS DUMPSTERS OR ROLL-OFF CONTAINERS SHALL BE OBTAINED FROM A PROPER WASTE DISPOSAL CONTRACTOR.
- CONTRACTOR SHALL VISIT SITE PRIOR TO THE START OF CONSTRUCTION AND PHOTOGRAPH EXISTING CONDITIONS. CONTRACTOR TO NOTE ANY OVERHANGING BRANCHES THAT WILL REQUIRE PRUNING TO PERMIT VEHICULAR ACCESS AND ADVISE LANDSCAPE ARCHITECT/CONTRACT ADMINISTRATOR. ALL PRUNING SHALL BE AS PER CURRENT BS (INTERNATIONAL SOCIETY OF ARBORICULTURE) STANDARDS.

SITE PREPARATION

- THE CONTRACTOR SHALL ENSURE POSITIVE DRAINAGE OF ALL AREAS WITHIN THE LIMIT OF THE CONTRACT.
- CONTRACTOR TO WORK WITHIN GUIDELINES FOR THE CITY'S NOISE BY-LAWS.
- ANY REFUSE, GARBAGE, OR OTHER DEBRIS ON SITE MUST BE REMOVED AND DISPOSED OF OFF-SITE AT THE EXPENSE OF THE CONTRACTOR.
- AREAS TO BE SODDED SHALL BE BACKFILLED WITH NATIVE SUITABLE SOIL TO 150MM BELOW FINISHED GRADE TO ALLOW FOR TOPSOIL INSTALLATION.
- ABSOLUTELY NO STORAGE OF EQUIPMENT OR MATERIALS OUTSIDE OF CONSTRUCTION FENCING.

SEDIMENTATION CONTROL

- CONTRACTOR SHALL BE RESPONSIBLE FOR MAINTAINING ALL SEDIMENTATION CONTROL DEVICES IN GOOD WORKING ORDER AT ALL TIMES. CONTRACTOR SHALL INSPECT SUCH DEVICES DAILY, AND AFTER EACH RAINFALL EVENT.

UNDERGROUND SERVICES AND UTILITIES

- UTILITIES MUST BE LOCATED BY THE UTILITY COMPANIES BEFORE CONSTRUCTION BEGINS. CONTRACTOR IS RESPONSIBLE FOR ANY DAMAGES WHICH OCCUR TO EXISTING SERVICES DURING CONSTRUCTION.
- CONTRACTOR IS RESPONSIBLE FOR LOCATING ALL EXISTING UTILITIES ON THE SITE.
- CONTRACTOR MUST CHECK & VERIFY ALL DIMENSIONS AND CONDITIONS ON THE JOB, REPORTING ALL DISCREPANCIES TO THE CONTRACT ADMINISTRATOR BEFORE PROCEEDING WITH THE WORK.
- CONTRACTOR IS RESPONSIBLE FOR ANY DAMAGE CAUSED TO EXISTING SERVICES WHEN EXCAVATING.

CLIENT

FORUM ASSET MANAGEMENT

EAST PODIUM, 2ND FLOOR
151 BAY STREET
TORONTO, ON, M5J 2T3

T. 416-947-0289
www.forumam.com

ARCHITECTURE

lemay
Lemay CO Inc
SUITE 401
60 ADELAIDE ST E
TORONTO, ON M5C 3E4

T. 647-254-3185
www.lemay.com

STRUCTURAL

D+M Structural Engineering

110
333 Preston Street
Ottawa, ON K1S 2N4

T. 613-651-8490
www.dms-engineers.ca

LANDSCAPE

Lemay

3500
Saint-Jacques Street
Ottawa, ON K2B 1H2

T. 614-622-5101
www.lemay.com

CIVIL

300
2611 Queenview Drive
Ottawa, ON K2B 1H2

T. 613-829-2800
www.weggroup.com

MECHANICAL & ELECTRICAL

Jain Sustainability

2nd Floor
7405 East Dufferin Crescent
Mississauga, ON L4N 0P8

T. 905-265-3900
www.jainsustainability.com

CONTRACTOR

3500
Saint-Jacques Street
Ottawa, ON K2B 1H2

T. 613-829-2800
www.weggroup.com

SURVEYOR

Ardis, O'Sullivan, Volkovsk Ltd.

Suite 500
14 Concourse Gate
Nepean, ON K2E 7S6

T. 613-727-8850
www.ardis.com

NOTES

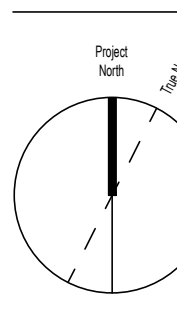
- CONTRACTOR TO CHECK AND VERIFY ALL DIMENSIONS PRIOR TO COMMENCING WORK.
- CONTRACTOR TO COMPLY WITH ALL BUILDING CODES, REGULATIONS, AND ORDINANCES OF AUTHORITIES HAVING JURISDICTION.
- THIS DRAWING IS NOT TO BE USED FOR CONSTRUCTION UNLESS STAMPED ISSUED FOR CONSTRUCTION BY LEMAY ARCHITECTURE AND DESIGN LTD.
- DO NOT SCALE DRAWING.
- THIS DRAWING MAY NOT BE COPIED, ALTERED, OR DISTRIBUTED IN WHOLE OR IN PART WITHOUT WRITTEN PERMISSION. COPYRIGHT © LEMAY ARCHITECTURE AND DESIGN LTD.
- REPORT ANY ERRORS AND OMISSIONS TO THE CONSULTANT IMMEDIATELY BEFORE COMMENCING WORK.
- DEVIATIONS FROM THE CONTRACT DOCUMENTS WITHOUT WRITTEN APPROVAL FROM CONSULTANT ARE SUBJECT TO CORRECTIONS AT CONTRACTOR EXPENSE.
- DIMENSIONS ARE IN METRIC (MM) UNLESS NOTED OTHERWISE.

LEGEND

- LIMIT OF PROPERTY
- ✕ EXISTING TREE TO BE REMOVED
- EXISTING TREE TO REMAIN AND PROTECT
- - - NEW METAL CHAINLINK
- - - NEW METAL GUARDRAIL
- - - NEW METAL HAND RAIL
- - - NEW FENCING FOR TREE PROTECTION SEE L-400-06
- NEW PLANTING BED
- NEW SODDED AREAS
- NEW SEEDED AREA (PARKLAND)
- NEW CRUSHED STONE PAVEMENT, SEE L-400-01
- NEW PRECAST CONCRETE PAVERS (PEDESTRIAN), SEE L-400-02
- NEW PRECAST CONCRETE PAVERS (VEHICULAR), SEE L-400-03
- NEW PEA STONE SURFACE, SEE L-400-08
- NEW PRECAST CONCRETE STAIRS / WALL / SEAT WALLS
- NEW POURED IN PLACE CONCRETE PAVEMENT
- ▲ BUILDING ACCESS OR EGRESS

ISSUE

#	DATE	DESCRIPTION
1	2024-09-08	ISSUED FOR SPA RESUBMISSION
2	2024-09-13	ISSUED FOR CLASS C ESTIMATE
3	2024-12-20	ISSUED FOR 50% CD
4	2025-03-07	ISSUED FOR BUILDING PERMIT
5	2025-05-02	ISSUED FOR TENDER REVIEW
6	2025-06-16	REISSUED FOR BUILDING PERMIT
7	2025-09-26	ISSUED FOR CONSOLIDATION
8	2025-11-28	ISSUED FOR VE
9	2025-12-02	ISSUED FOR VE REVISED



PROJECT NUMBER & PROJECT NAME
24-0353 - 15(17) OBLATS AVENUE, OTTAWA

SHEET NAME
TREE CONSERVATION REPORT

DATE / TIME STAMP
12/02/2025 11:46:52 AM

APPROVED BY

MYLENE CARREAU

CHECKED BY

MYLENE CARREAU

DRAWN BY

TAN AU CA NGUYEN

SCALE

SHEET NUMBER

L.100

SHEET SIZE - ARCH E (914 X1219.2mm) (36"X48")

#18946

