

Drawing:

- All dimensions are in millimeters unless otherwise noted.
- This drawing is not to be scaled.
- Drawings refer to precast structure only.
- All tolerances shall be to CSA 23.4-16 Clause 12.

Stone Strong Blocks - Concrete and Reinforcing

Concrete:

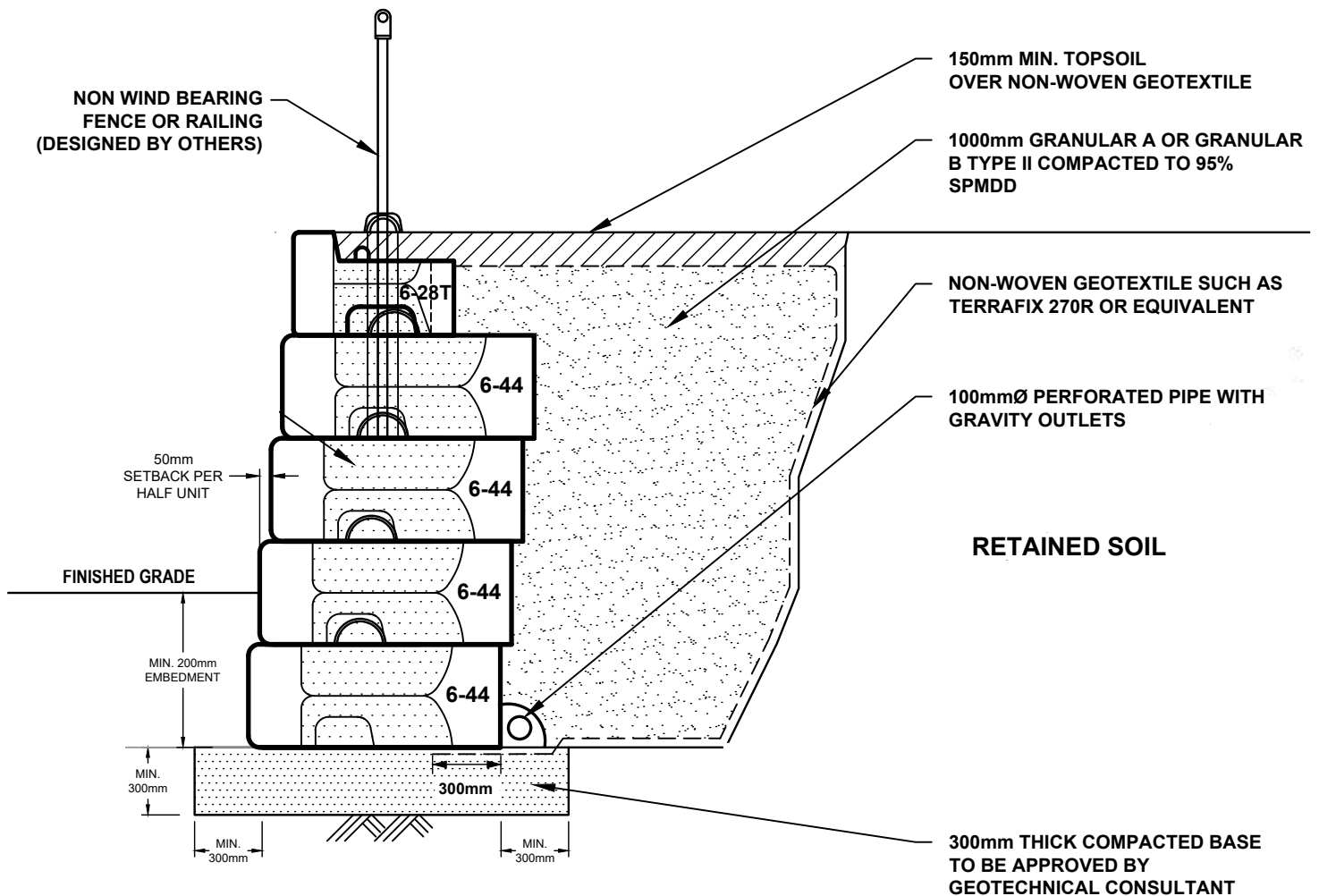
- Concrete strength: 40MPa @ 28 days.
- Air Content: 5-8%.
- Class of Exposure: C1.
- Stripping strength: 15MPa.

Reinforcing:

- Reinforcing Steel shall be CAN/CSA G30.18M Grade 400W.
- Welding of steel reinforcement to conform to CSA W186.
- No changes to steel reinforcement or Lift Anchors without Engineers approval.
- Secure Lift Anchors or Loops prior to concrete pour.

4		
3		
2		
1		
#:		DATE

Typical Stone Strong Retaining Wall - Vertical



Drawing:

- All dimensions are in millimeters unless otherwise noted.
- This drawing is not to be scaled.
- Drawings refer to precast structure only.
- All tolerances shall be to CSA 23.4-16 Clause 12.

Stone Strong Blocks - Concrete and Reinforcing

Concrete:

- Concrete strength: 40MPa @ 28 days.
- Air Content: 5-8%.
- Class of Exposure: C1.
- Stripping strength: 15MPa.

Reinforcing:

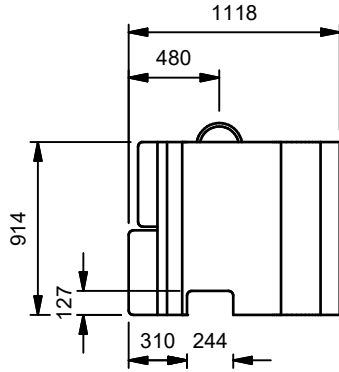
- Reinforcing Steel shall be CAN/CSA G30.18M Grade 400W.
- Welding of steel reinforcement to conform to CSA W186.
- No changes to steel reinforcement or Lift Anchors without Engineers approval.
- Secure Lift Anchors or Loops prior to concrete pour.

4		
3		
2		
1		
#:		DATE

Typical Stone Strong Retaining Wall - Step Back

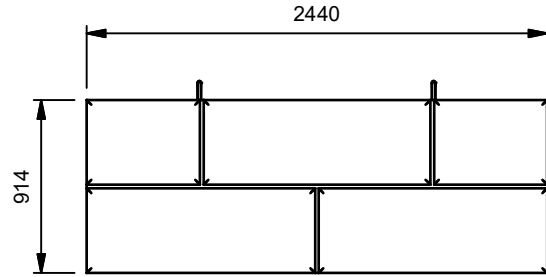
STENCIL

MCON OTT
CSA A23.4
24-44
yyyy/mm/dd



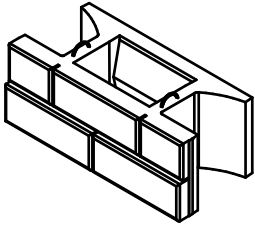
SIDE-DIMENSIONS

SCALE: 1:40



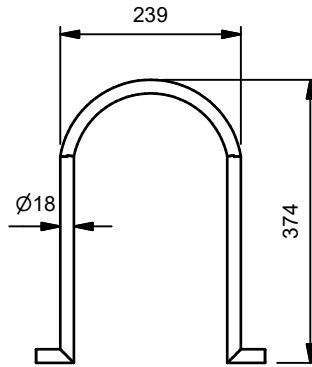
FRONT-DIMENSIONS

SCALE: 1:40



ISOMETRIC VIEW

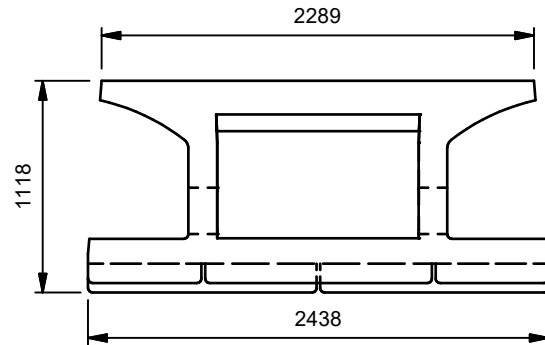
SCALE: 1:75



18mm LIFTING LOOP

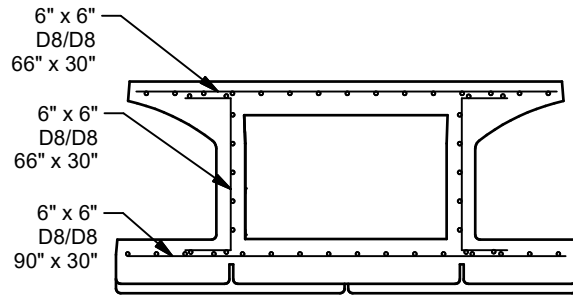
(Part# CSSA10-18)

SCALE: 1:10



PLAN-DIMENSIONS

SCALE: 1:40



PLAN-REINFORCEMENT

SCALE: 1:40

Drawing:

-All dimensions are in millimeters unless otherwise noted.
-This drawing is not to be scaled.
-Drawings refer to precast structure only.
-All tolerances shall be to CSA 23.4-16 Clause 12.

Concrete:

-Concrete strength: 40MPa @ 28 days.
-Air Content: 5-8%.
-Class of Exposure: C1.
-Stripping strength: 15MPa.

Clear Cover

-Minimum 50mm

Reinforcing:

-Reinforcing Steel shall be CAN/CSA G30.18M Grade 400W.
-Welding of steel reinforcement to conform to CSA W186.
-No changes to steel reinforcement or Lift Anchors without Engineers approval.
-Secure Lift Anchors or Loops prior to concrete pour.

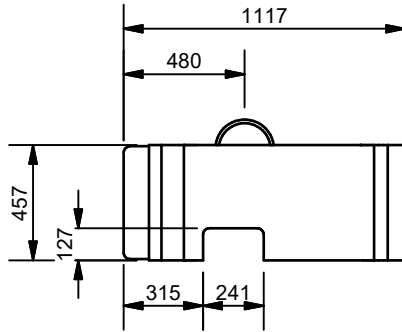
4		
3		
2	VOL., MASS, PRODUCT CODE UPDATED	SEPT. 19, 2022
1	INITIAL ISSUE (2021)	JAN. 29, 2021
#:	REVISION	DATE

24-44 SF BLOCK

2438L x 914H x 1118W

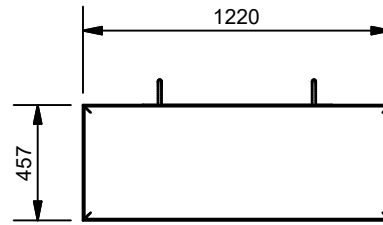
Mass: 2,683 kg	Code: SS2444
Volume: 1.166 m ³	DWG #: 7.13
DWG By: C.H.	APPD By: B.M.
Path: N:\Products\Stone Strong	

STENCIL
MCON OTT
CSA A23.4
06-44
yyyy/mm/dd



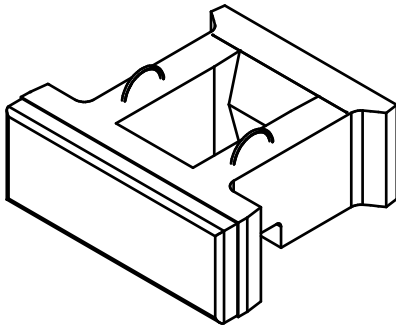
SIDE-DIMENSIONS

SCALE: 1:30



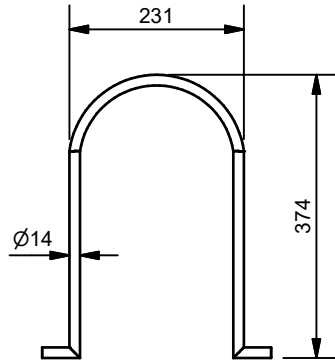
FRONT-DIMENSIONS

SCALE: 1:30



ISOMETRIC VIEW

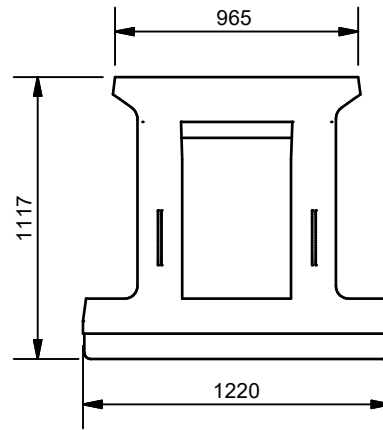
SCALE: 1:30



14mm LIFTING LOOP

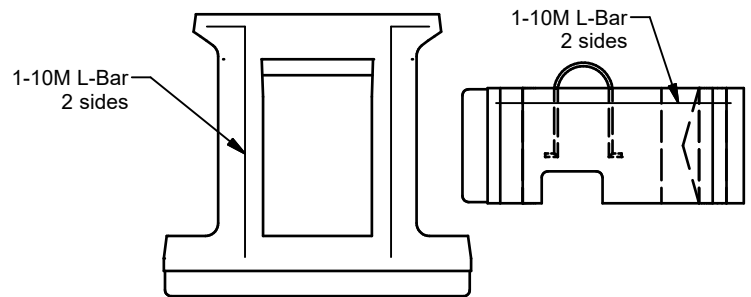
(Part# CSSA10-14)

SCALE: 1:10



PLAN-DIMENSIONS

SCALE: 1:30



PLAN AND SIDE-REINFORCEMENT

SCALE: 1:30

Drawing:

-All dimensions are in millimeters unless otherwise noted.
-This drawing is not to be scaled.
-Drawings refer to precast structure only.
-All tolerances shall be to CSA 23.4-16 Clause 12.

Concrete:

-Concrete strength: 40MPa @ 28 days.
-Air Content: 5-8%.
-Class of Exposure: C1.
-Stripping strength: 15MPa.

Clear Cover

-Minimum 50mm

Reinforcing:

-Reinforcing Steel shall be CAN/CSA G30.18M Grade 400W.
-Welding of steel reinforcement to conform to CSA W186.
-No changes to steel reinforcement or Lift Anchors without Engineers approval.
-Secure Lift Anchors or Loops prior to concrete pour.

4		
3		
2	VOL., MASS, M CON CODE UPDATED	SEPT. 19, 2022
1	INITIAL ISSUE (2021)	JAN. 27, 2021
#:	REVISION	DATE

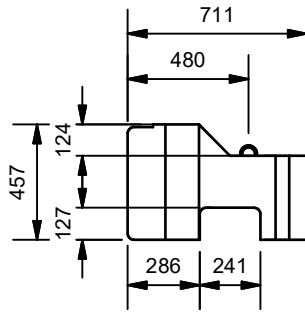
6 SF BLOCK

1220L x 457H x 1117W

Mass: 720 kg	Code: SS0644
Volume: 0.313 m ³	DWG #: 7.8
DWG By: C.H.	APPD By: B.M.
Path: N:\Products\Stone Strong	

STENCIL

MCON OTT
CSA A23.4
06-28T
yyyy/mm/dd



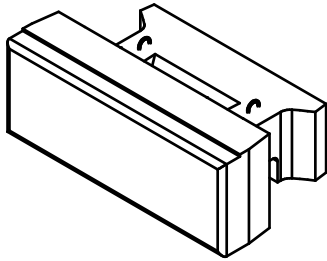
SIDE-DIMENSIONS

SCALE: 1:30



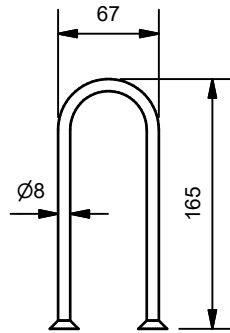
FRONT-DIMENSIONS

SCALE: 1:30



ISOMETRIC VIEW

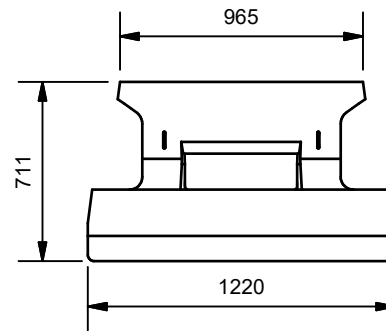
SCALE: 1:30



6.5" LIFTING LOOP

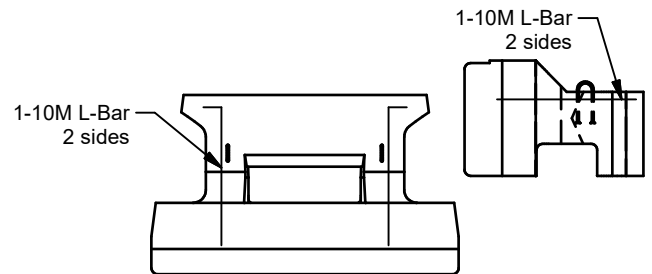
(Part# LRA516612G)

SCALE: 1:5



PLAN-DIMENSIONS

SCALE: 1:30



PLAN AND SIDE-REINFORCEMENT

SCALE: 1:30

Drawing:

- All dimensions are in millimeters unless otherwise noted.
- This drawing is not to be scaled.
- Drawings refer to precast structure only.
- All tolerances shall be to CSA 23.4-16 Clause 12.

Concrete:

- Concrete strength: 40MPa @ 28 days.
- Air Content: 5-8%.
- Class of Exposure: C1.
- Stripping strength: 15MPa.

Clear Cover

- Minimum 50mm

Reinforcing:

- Reinforcing Steel shall be CAN/CSA G30.18M Grade 400W.
- Welding of steel reinforcement to conform to CSA W186.
- No changes to steel reinforcement or Lift Anchors without Engineers approval.
- Secure Lift Anchors or Loops prior to concrete pour.

4		
3		
2	VOL., MASS, M CON CODE UPDATED	SEPT. 19, 2022
1	INITIAL ISSUE (2021)	JAN. 27, 2021
#:	REVISION	DATE

6 SF BLOCK - TOP BLOCK

1220L x 457H x 711W

Mass: 545 kg	Code: SS0628T
Volume: 0.237 m ³	DWG #: 7.7
DWG By: C.H.	APPD By: B.M.
Path: N:\Products\Stone Strong	