

PART 2
 PLAN 5R-4255
 P.I.N. 04538-0050

P.I.N. 04538-0053

CONCESSION
 P.I.N. 04538-0047

PART 1
 PLAN 5R-4255
 P.I.N. 04538-0047

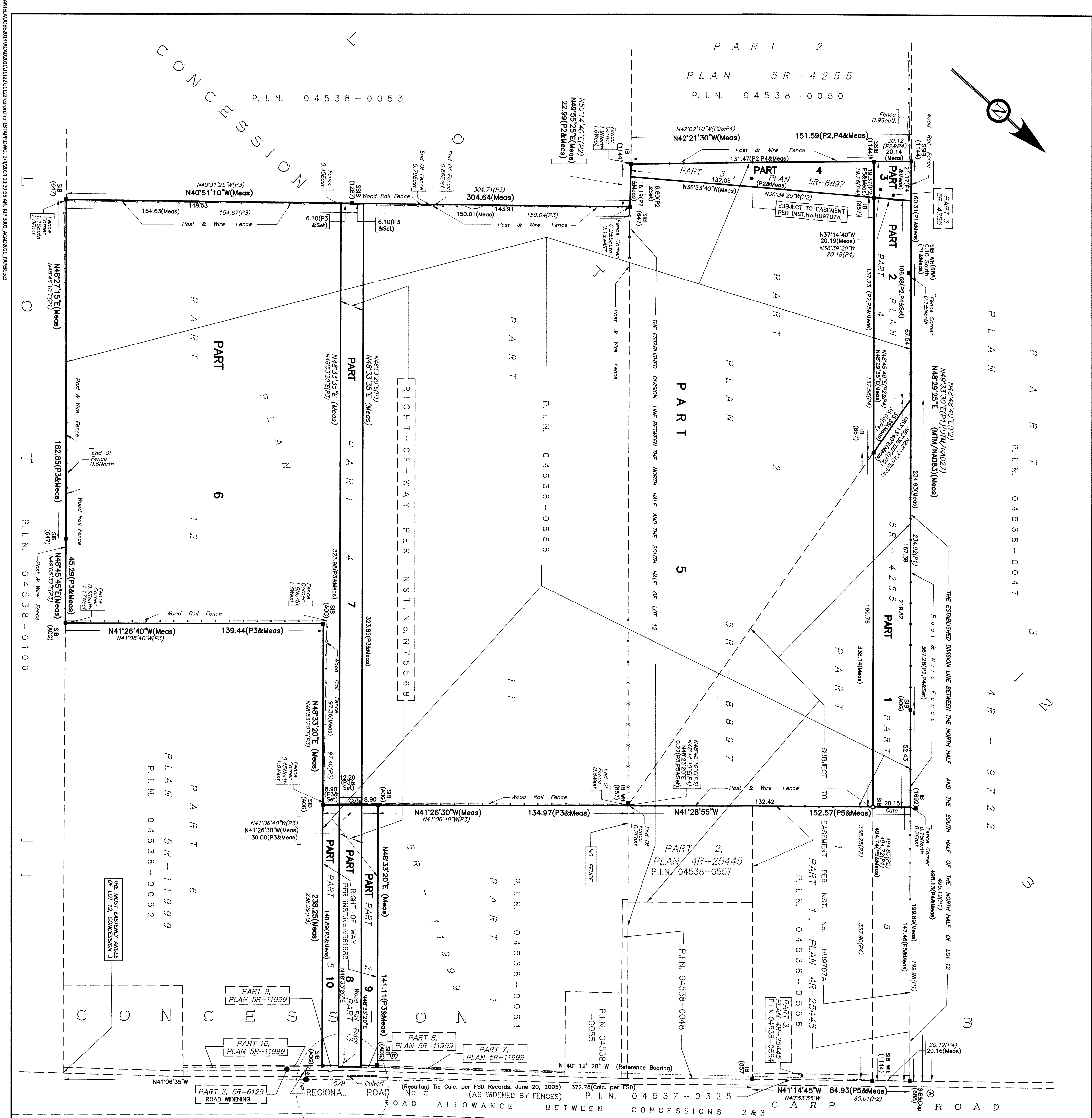
PART 5
 PLAN 5R-4255
 P.I.N. 04538-0058

PART 6
 PLAN 5R-4255
 P.I.N. 04538-0100

PART 8
 PLAN 5R-11999
 P.I.N. 04538-0052

PART 1
 PLAN 4R-25445
 P.I.N. 04538-0555

PART 3
 PLAN 5R-4255
 P.I.N. 04538-0551



NOTICE OF APPLICATION No. 00

I REQUIRE THIS PLAN TO BE DEPOSITED UNDER THE LAND TITLES ACT.

DATE: JANUARY 14, 2014

REGISTERED FOR THE LAND TITLES DIVISION OF THE OTTAWA-CARLETON No. 4

DATE:2014

RECEIVED AND DEPOSITED

PLAN 4R-

SCHEDULE

PART	LOT	CONCESSION	PLAN
1,2,3,4,5,6	12	3	04538-0559
7,8,9,10	12	3	04538-0559

PLAN OF SURVEY OF
 PART OF LOT 12
 CONCESSION 3
 Geographic Township of HUNTLEY
 City of OTTAWA
 FARLEY SMITH & DENIS SURVEYING LTD
 2014

SCALE 1:1000

METRIC NOTE
 DISTANCES AND CO-ORDINATES SHOWN ON THIS PLAN ARE IN METRES AND CAN BE CONVERTED TO FEET BY DIVIDING BY 0.3048.

BEARING NOTE

BEARINGS ARE GRID AND ARE DERIVED FROM REFERENCE POINTS (A) AND (B) BY REAL-TIME NETWORK OBSERVATIONS AND ARE REFERRED TO THE CENTRAL MERIDIAN 76°30' W LONGITUDE, NAD 1983 (ORIGINAL).

DISTANCES ARE GRID AND CAN BE CONVERTED TO GRID BY MULTIPLYING BY A COMBINED SCALE FACTOR OF 0.999995.

CO-ORDINATES WERE DERIVED FROM REAL-TIME NETWORK OBSERVATIONS (SMARTNET) NAD 1983 (ORIGINAL).

POINT ID	NORTHING	EASTING
(A)	5020238.132	343475.480
(B)	5020018.420	343681.184

CO-ORDINATES ARE NAD 1983 (ORIGINAL) TO UTM. ACCURACY PER SEC. 14 (2) OF OREG. 216/10 AND CANNOT, IN THESE CASES, BE USED TO RE-ESTABLISH CORNERS OR BOUNDARIES SHOWN ON THIS PLAN.

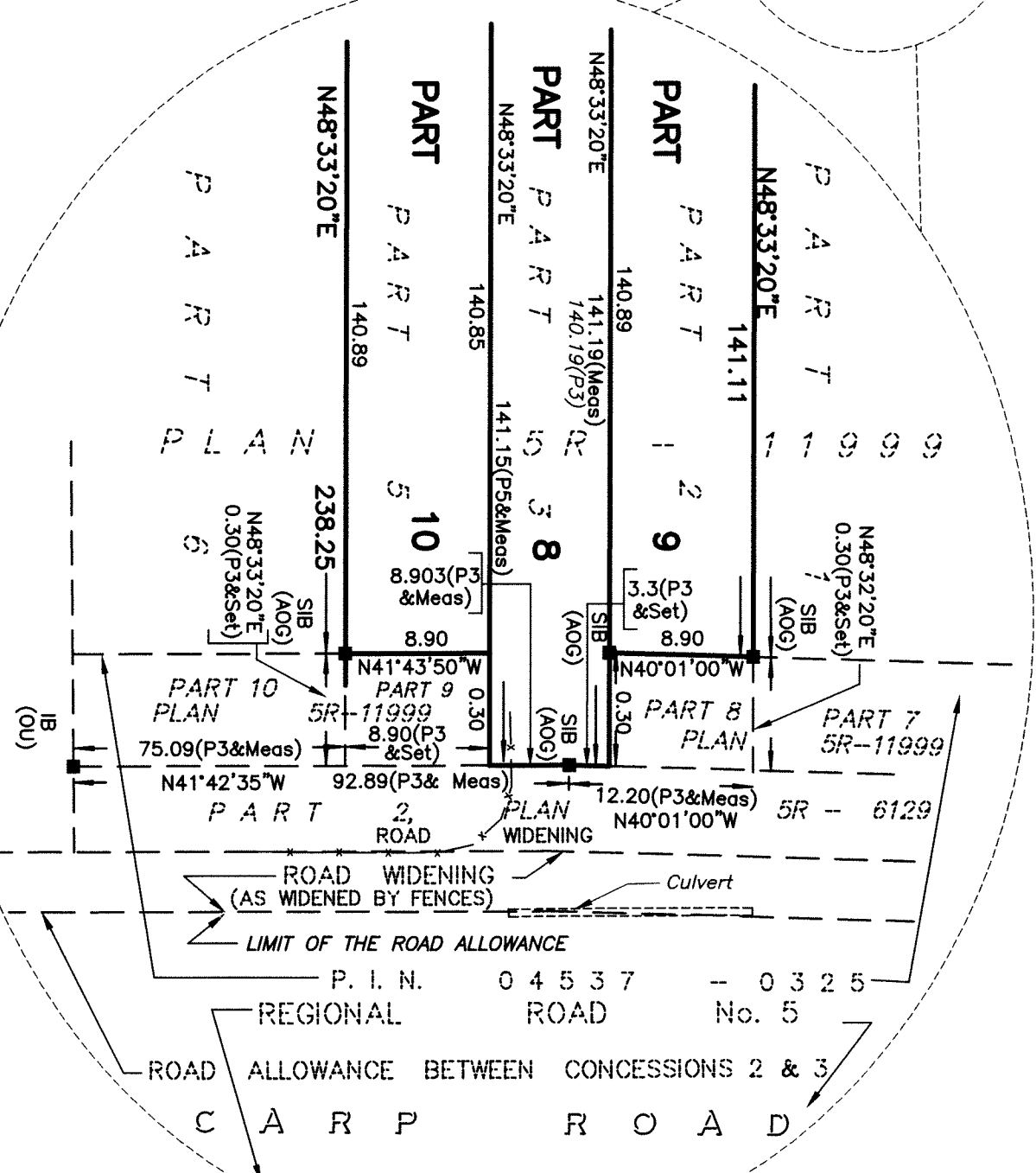
SURVEYOR'S CERTIFICATE

I CERTIFY THAT:
 1. THIS SURVEY AND PLAN ARE CORRECT AND IN ACCORDANCE WITH THE SURVEY ACT AND THE REGULATIONS MADE UNDER THEM.
 2. THE SURVEY WAS COMPLETED ON THE 27th day of January 2014.

DATE: JANUARY 27, 2014

Denise Farley
 DENISE FARLEY
 ONTARIO LAND SURVEYOR

NOTE
 ALL FENCES SHOWN ON THIS PLAN ARE OVER 10 YEARS OLD.



FARLEY, SMITH & DENIS SURVEYING LTD.
 ONTARIO LAND SURVEYORS
 CANADA LAND SURVEYORS

190 COLLAIRIE ROAD, OTTAWA, ONTARIO, K2E 7J5 TEL: (613) 727-8226 FAX: (613) 727-1823