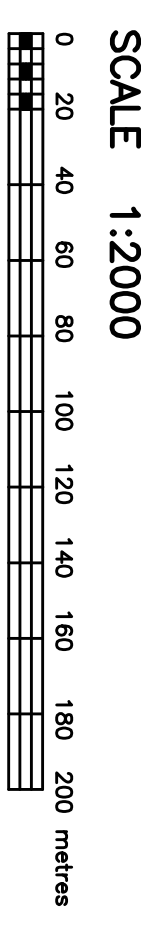


DRAFT PLAN OF COMMON ELEMENT CONDOMINIUM OF  
**BLOCKS 13 & 14**  
**REGISTERED PLAN 4M-XXXX**  
**CITY OF OTTAWA**  
**FARLEY SMITH & DENIS SURVEYING LTD**  
**2014**



**METRIC NOTE**  
 DISTANCES SHOWN ON THIS PLAN ARE IN METRES AND CAN BE CONVERTED TO FEET BY DIVIDING BY 0.3048.

**ELEVATION NOTE**  
 ELEVATIONS ARE GEODETIC.

**ADDITIONAL INFORMATION**

(a)	SEE PLAN
(b)	SEE PLAN
(c)	SEE PLAN
(d)	SEE PLAN
(e)	SEE PLAN
(f)	SEE PLAN
(g)	SEE PLAN
(h)	SEE PLAN
(i)	SEE PLAN
(j)	SEE PLAN
(k)	SEE PLAN
(l)	SEE PLAN

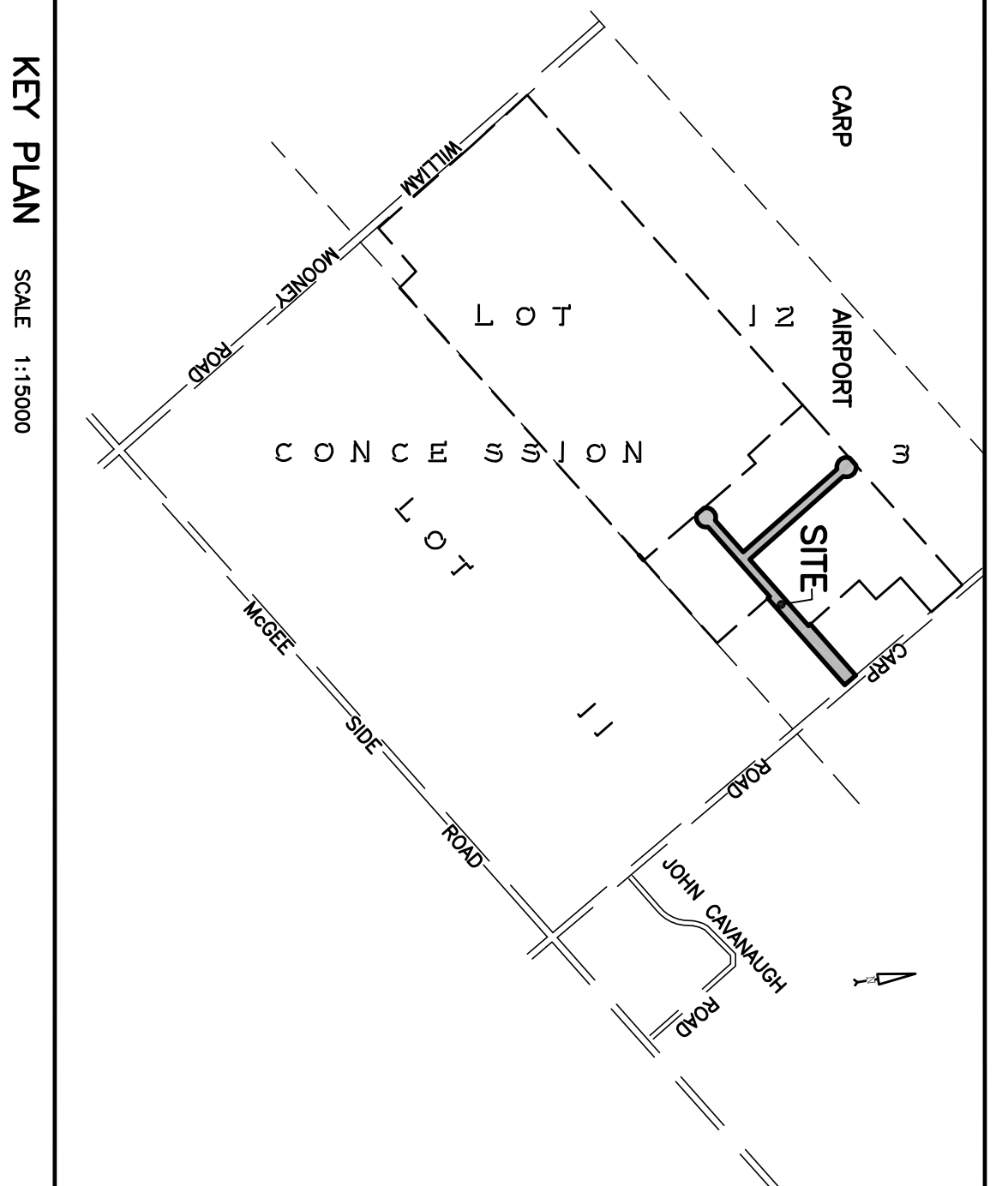
LEGEND

x-x-x	FENCE
o/h	UTILITY POLE
o/n	OVERHEAD WIRES
c	DENOTES CENTRELINE OF ROAD
r	DENOTES ROAD WIDTH
a	DENOTES ROAD LENGTH

**APPLICATION** .....

SUBJECT TO THE CONDITIONS, IF ANY, SET FORTH IN OUR LETTER DATED ..... 2014, THIS DRAFT PLAN IS APPROVED BY THE CITY OF OTTAWA, UNDER SECTION 51 OF THE PLANNING ACT THIS ..... DAY OF ..... 2014.

.....  
 DERRICK MOODIE, MANAGER  
 DEVELOPMENT REVIEW, RURAL SERVICES  
 PLANNING AND GROWTH MANAGEMENT DEPARTMENT  
 CITY OF OTTAWA



**SURVEYOR'S CERTIFICATE**

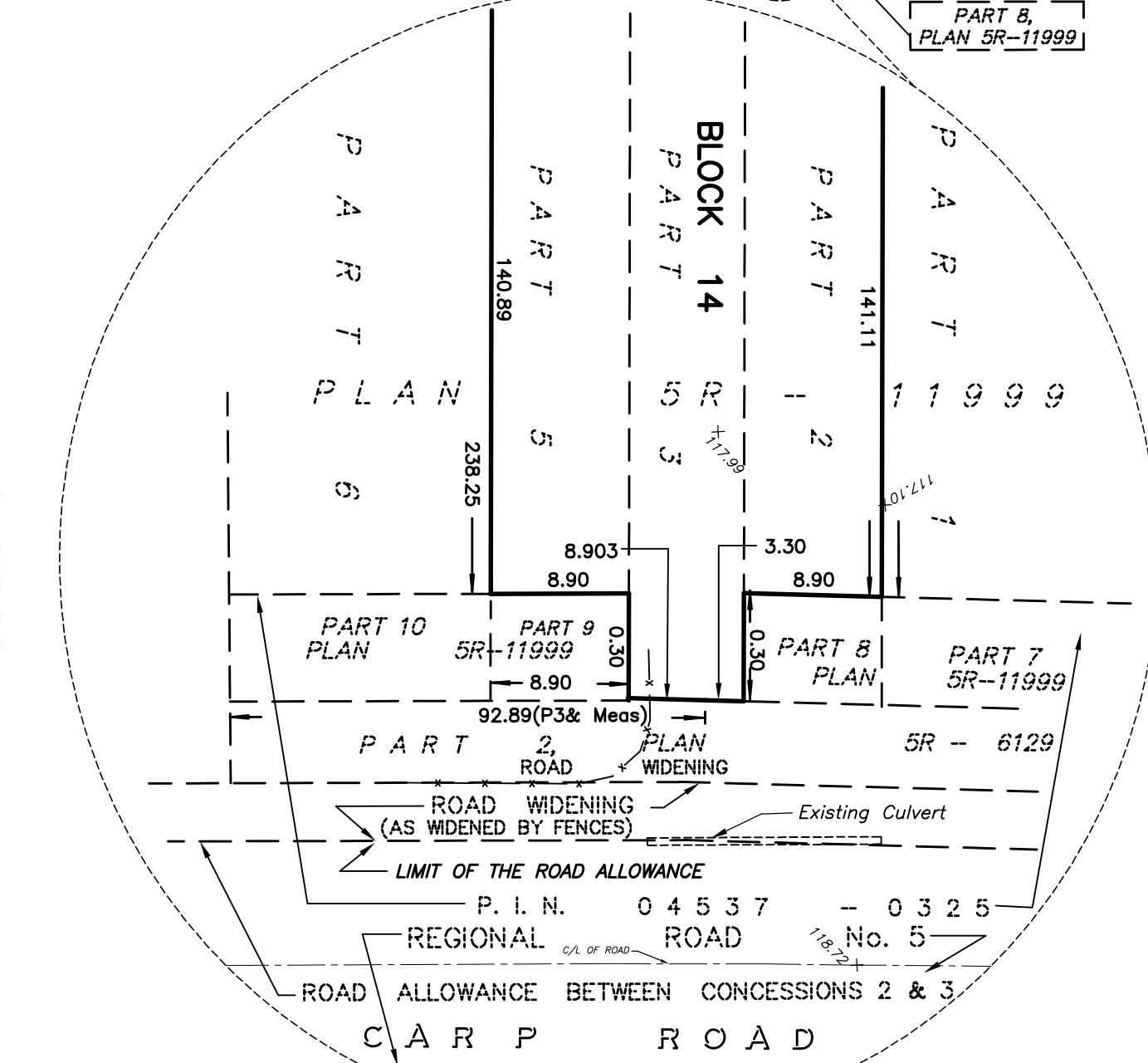
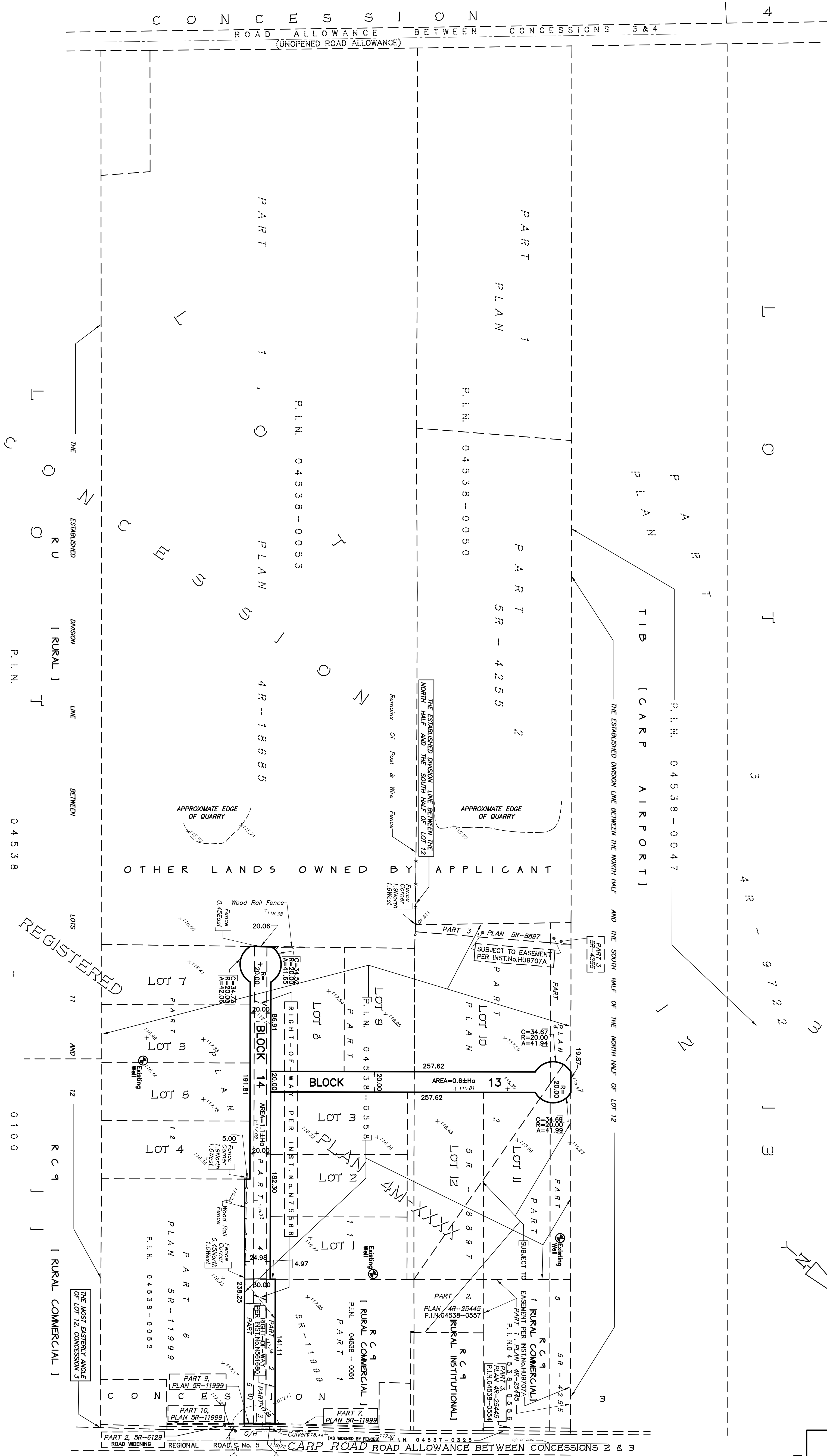
I HEREBY CERTIFY THAT:  
 1. THE BOUNDARIES OF THE LANDS TO BE SUBDIVIDED AND THEIR RELATIONSHIP TO ADJOINING LANDS ARE ACCURATELY AND CORRECTLY SHOWN.  
 DATE: AUGUST 18, 2014

.....  
 RONALD DENIS  
 ONTARIO LAND SURVEYOR

**OWNER'S CERTIFICATE**

I HEREBY AUTHORIZE FARLEY SMITH & DENIS SURVEYING LTD. TO SUBMIT THIS DRAFT PLAN OF CONDOMINIUM ON MY BEHALF.  
 DATE: AUGUST 18, 2014

.....  
 GREG LEBLANC  
 .....  
 SALLIE STOREY



**FARLEY, SMITH & DENIS SURVEYING LTD.**  
 ONTARIO LAND SURVEYORS  
 CANADA LANDS SURVEYORS

190 COLONNADE ROAD, OTTAWA, ONTARIO K2Z 7J5 TEL: (613) 727-8226 FAX: (613) 727-1823

FILE NO.: J-1122

23-030 FILE(S) JPM (0207) 1122 CARP ROAD V122-CARP ROAD-SRFT PLAN OF COMMON ELEMENT CONDOMINIUM.dwg August-18-14 8:48:49 AM