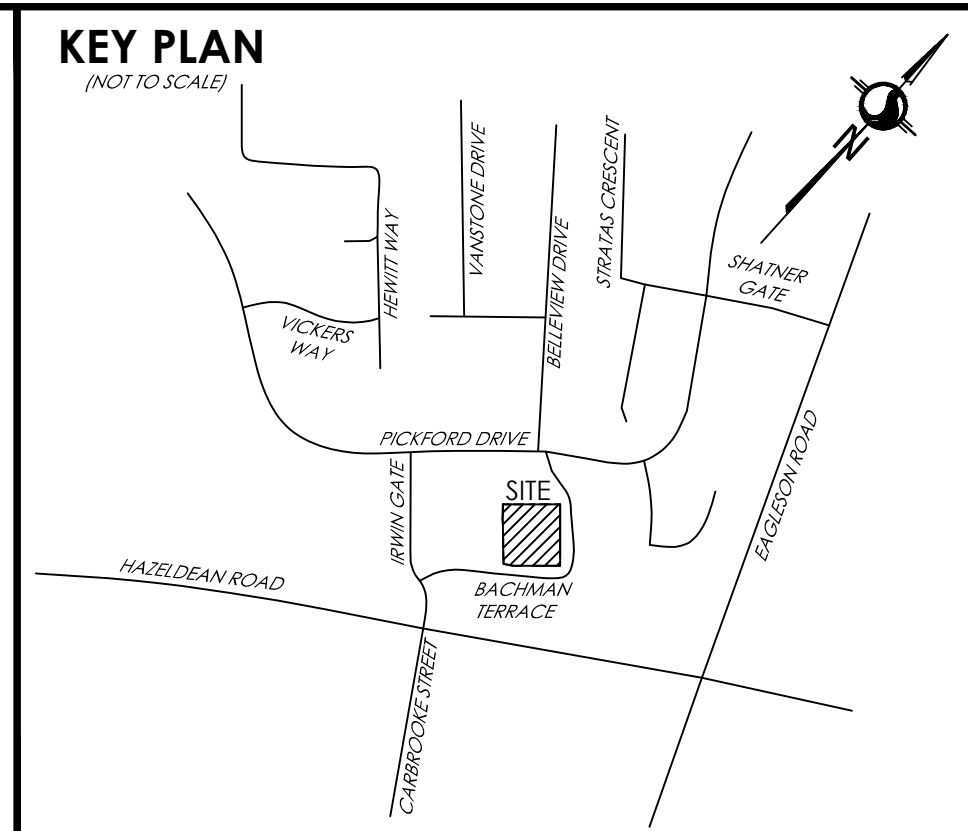


PIN 04493 - 0001

EXISTING PARK  
(CITY OF OTTAWA)

SUBJECT TO THE CONDITIONS, IF ANY, SET FORTH IN OUR LETTER DATED \_\_\_\_\_ 20\_\_\_\_ THIS DRAFT PLAN IS APPROVED BY THE CITY OF OTTAWA UNDER SECTION 51 OF THE PLANNING ACT. THIS \_\_\_\_\_ DAY OF \_\_\_\_\_, 20\_\_\_\_.

\_\_\_\_\_ DERRICK MOODIE, MANAGER  
DEVELOPMENT REVIEW-WEST  
PLANNING, INFRASTRUCTURE AND ECONOMIC DEVELOPMENT DEPARTMENT, CITY OF OTTAWA



**DRAFT PLAN OF CONDOMINIUM  
PART OF LOT 33  
CONCESSION 12**  
CITY OF OTTAWA  
Stantec Geomatics Ltd.



**METRIC CONVERSION**  
DISTANCES AND COORDINATES SHOWN ON THIS PLAN ARE IN METRES AND CAN BE CONVERTED TO FEET BY DIVIDING BY 0.3048

**ADDITIONAL INFORMATION REQUIRED UNDER SECTION 51 OF THE PLANNING ACT.**

- (A)-AS SHOWN ON DRAFT PLAN
- (B)-AS SHOWN ON DRAFT PLAN
- (C)-AS SHOWN ON DRAFT AND KEY PLANS
- (D)-COMMON ELEMENT CONDOMINIUM
- (E)-AS SHOWN ON DRAFT PLAN
- (F)-AS SHOWN ON DRAFT PLAN
- (G)-AS SHOWN ON DRAFT PLAN
- (H)-CITY OF OTTAWA
- (I)-SEE SOIL REPORT
- (J)-AS SHOWN ON DRAFT PLAN
- (K)-ALL SERVICES AVAILABLE
- (L)-SUBJECT TO EASEMENTS PER INST. NO.'S OC2087854, OC2142951 & OC2322454

**OWNER'S CERTIFICATE**  
I HEREBY AUTHORISE STANTEC GEOMATICS LTD. TO SUBMIT THIS DRAFT PLAN OF SUBDIVISION ON MY BEHALF

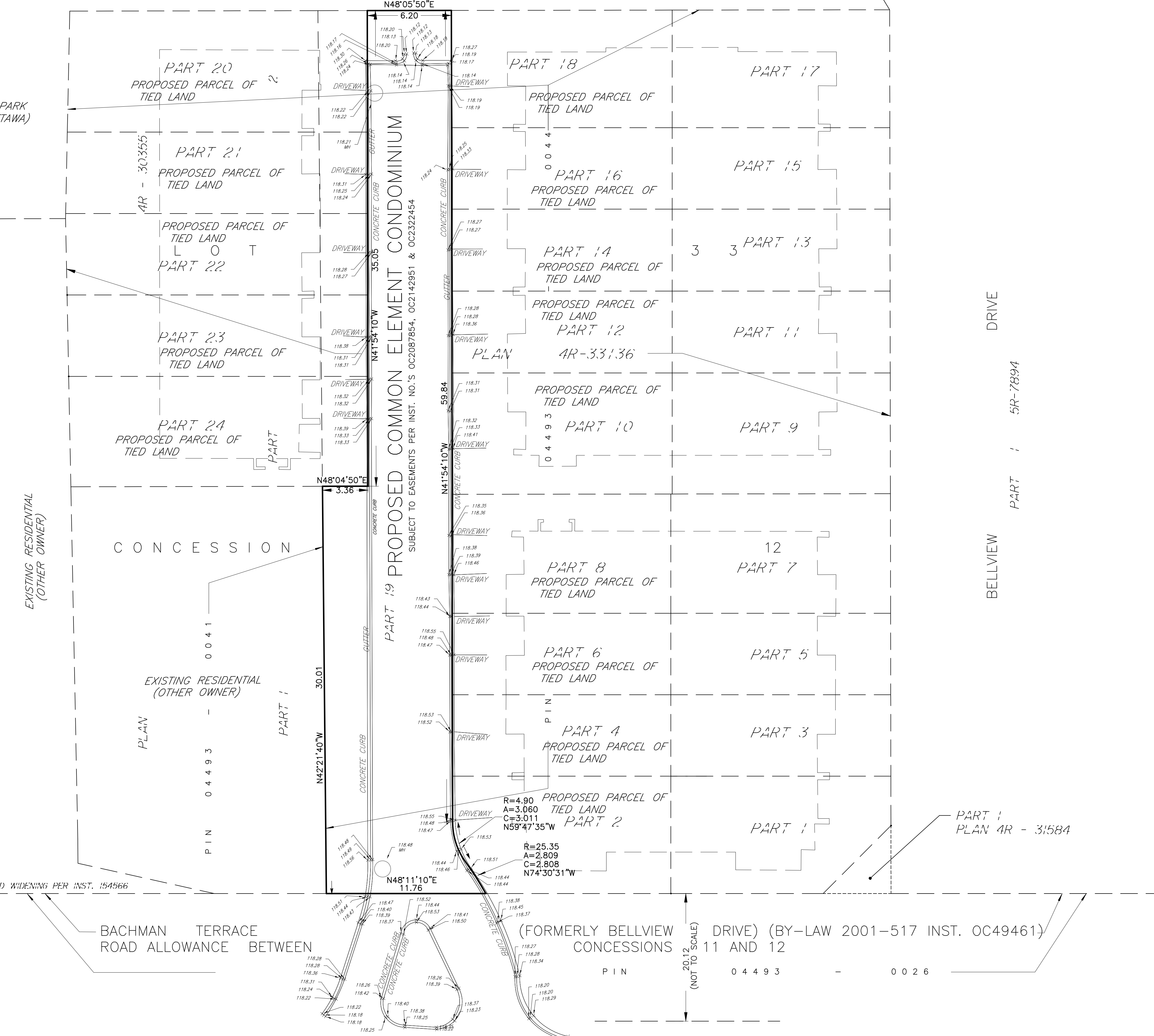
DATE \_\_\_\_\_ JAMIE XIONG  
FES DEVELOPMENT INC.  
I HAVE THE AUTHORITY TO BIND THE CORPORATION

**SURVEYOR'S CERTIFICATE**  
I HEREBY CERTIFY THAT THE BOUNDARIES OF THE SUBJECT LANDS AND THEIR RELATIONSHIP TO ADJOINING LANDS HAVE BEEN ACCURATELY AND CORRECTLY SHOWN.

DATE \_\_\_\_\_ BRIAN J. WEBSTER  
ONTARIO LAND SURVEYOR

**Stantec**  
CANADA AND ONTARIO LAND SURVEYORS  
1331 CLYDE AVENUE, SUITE 400  
OTTAWA, ONTARIO, K2C 3G4  
TEL: (613) 722-4420 FAX: (613) 722-2799  
stantec.com

DRAWN: ZF CHECKED: CT DATE: 11/01/2021 PROJECT NO.: 161614067-140



PIN 04493 - 0026