

LEGEND:

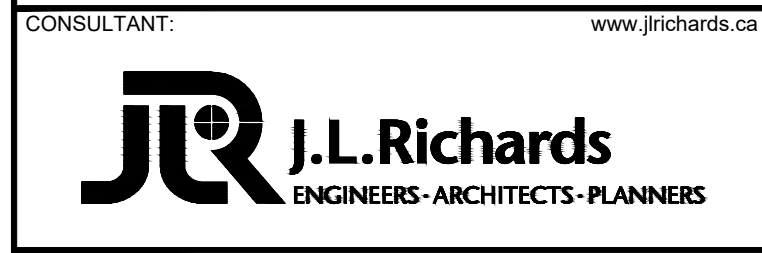
- - - STREET LIGHT CABLES
- ▬ CONCRETE ENCASED DUCT
- 2H, 1B, 1C, 1SL DENOTES NUMBER OF DUCTS
- ⊗ 5W LED STREET LIGHT
- ↑ GROUND ROD

PRELIMINARY DESIGN
 THESE DOCUMENTS ARE NOT COMPLETE IN ALL DETAILS AND MAY BE SUBJECT TO CHANGE AS DESIGN DEVELOPMENT AND CODE REVIEW IS ADVANCED.

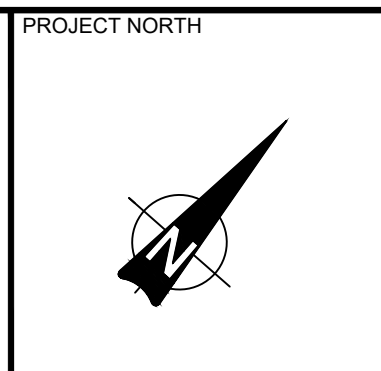
01	ISSUED TO CITY FOR REVIEW FIRST ENGINEERING SUBMISSION	19/07/22
No.	ISSUE / REVISION	DDMMYY

This drawing is copyright protected and may not be reproduced or used for purposes other than execution of the described work without the express written consent of J.L. Richards & Associates Limited.

VERIFY SHEET SIZE AND SCALES. BAR TO THE RIGHT IS 25mm IF THIS IS A FULL SIZE DRAWING.
 SCALE: AS INDICATED



CONSULTANT:



PROJECT: **ARCADIA STAGE 6**
 450 HUNTMAR DRIVE

DRAWING: **ELECTRICAL PLAN LIGHTING LAYOUT**

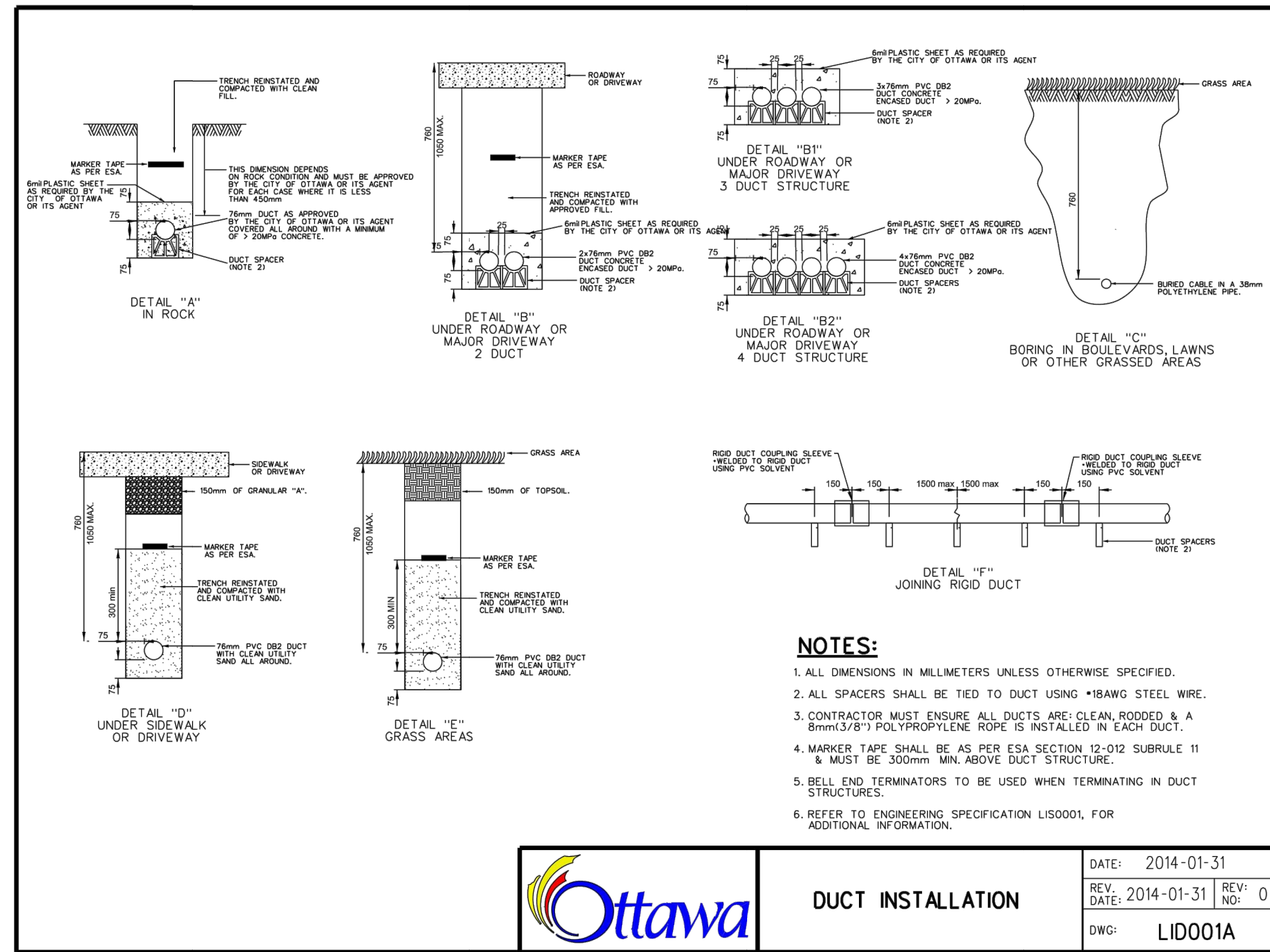
DESIGN: OS	DRAWING #:
DRAWN: OS	E01
CHECKED: RH	
JLR #: 26299-006	

GENERAL NOTES:

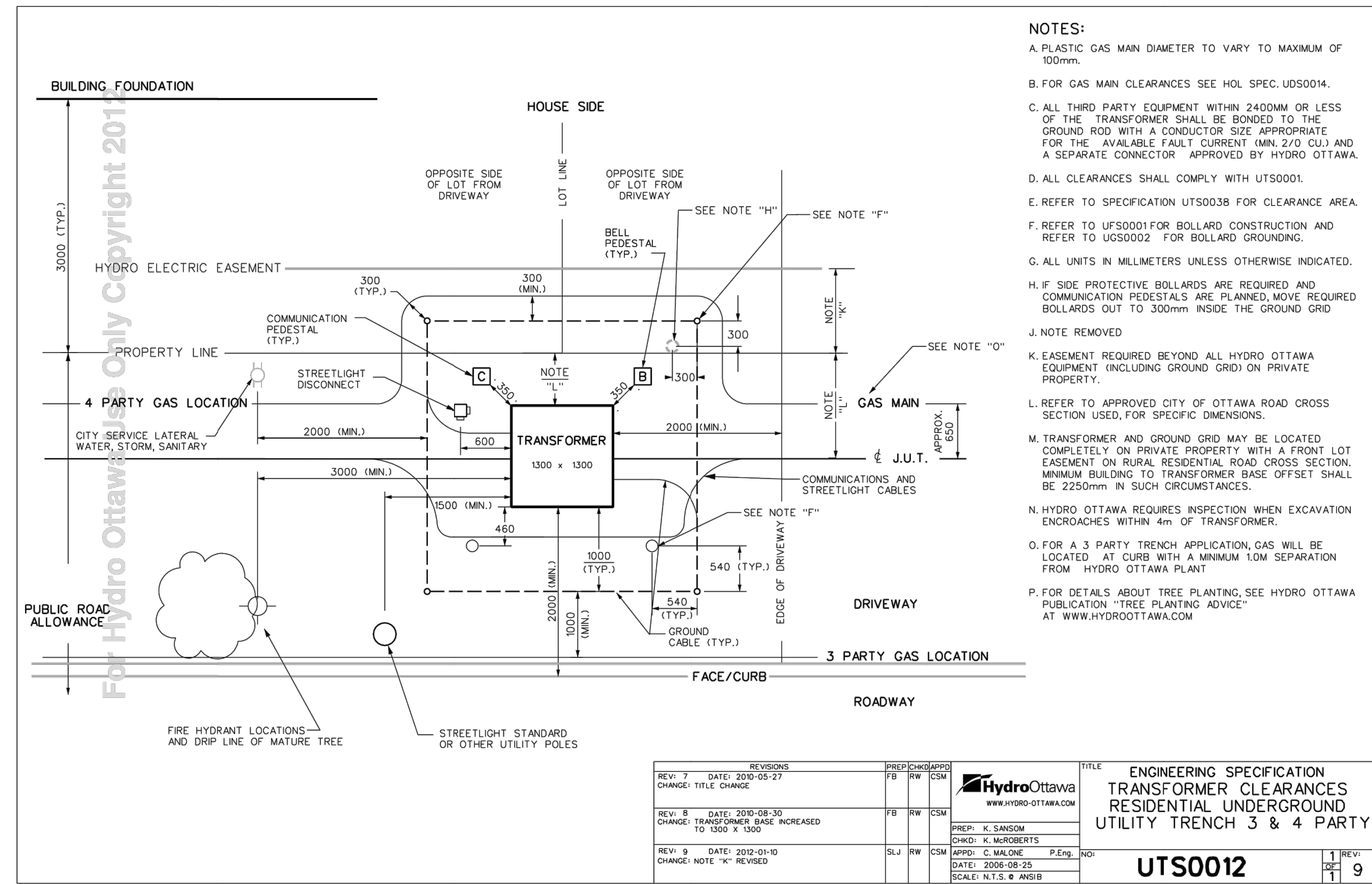
- ALL STREETLIGHT MATERIALS AND INSTALLATIONS MUST COMPLY WITH CITY OF OTTAWA STANDARDS AND SPECIFICATIONS, INCLUDING BUT NOT LIMITED TO DETAILS ON DRAWING E02.
- ROADWAY CLASSIFICATION: COUNTRY GLENWAY IS CLASSIFIED AS A COLLECTOR, ALL OTHER ROADS WITHIN SCOPE ARE CLASSIFIED AS LOCAL.
- EXACT LOCATION OF LIGHTING CONDUITS TO BE AS PER DETAILS ON DRAWINGS IN "D" SERIES (D1).
- ALL ELECTRICAL DRAWINGS SHOULD BE READ IN CONJUNCTION WITH JLR COMPOSITE UTILITY PLANS ON DRAWINGS IN "U" SERIES (U1).
- ALL LIGHTING POLES SHOULD BE INSTALLED WITH MINIMUM CLEARANCE:
 - 1.5m FROM DRIVEWAY
 - 1.0m TO CATCH BASIN LEADS
 - 2.0m (MINIMUM) TO HYDRANT

File Location: V:\2000\026299-006 - Arcadia Stage 02-Design\5-Electrical\CAD For Visual\26299-006_LIGHTING_LAYOUT.dwg

PLOT DATE: July 18, 2022 1:52:54 PM

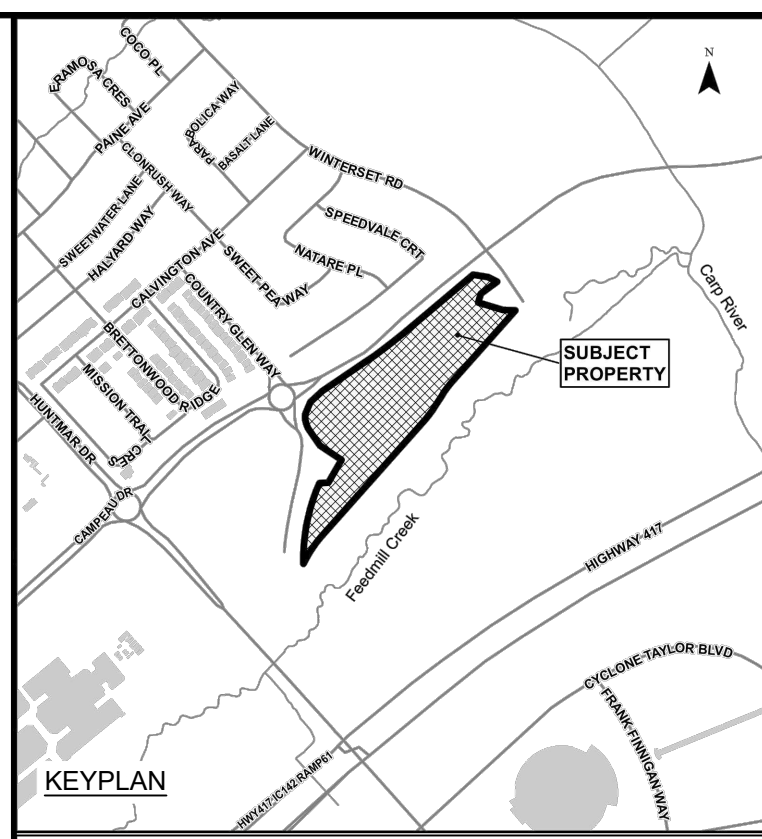


Ottawa DUCT INSTALLATION DATE: 2014-01-31 REV: 0 DWG: LID001A



HydroOttawa ENGINEERING SPECIFICATION TRANSFORMER CLEARANCES RESIDENTIAL UNDERGROUND UTILITY TRENCH 3 & 4 PARTY **UTS0012**

REV	DATE	DESCRIPTION	BY	CHK
REV 7	2010-05-27	CHANGE FILE CHANGE	JB	RW CSK
REV 8	2010-08-30	TRANSFORMER BASE INCREASED TO 1500 x 1500	JB	RW CSK
REV 9	2010-01-10	CHANGE NOTE "K" REVISED	BLJ	RW CSK



LEGEND:

- STREET LIGHT CABLES
- CONCRETE ENCASED DUCT
- 2H, 1B, 1C, 1SL DENOTES NUMBER OF DUCTS
- 5W LED STREET LIGHT
- GROUND ROD

PRELIMINARY DESIGN

THESE DOCUMENTS ARE NOT COMPLETE IN ALL DETAILS AND MAY BE SUBJECT TO CHANGE AS DESIGN DEVELOPMENT AND CODE REVIEW IS ADVANCED.

01	ISSUED TO CITY FOR REVIEW FIRST ENGINEERING SUBMISSION	19/07/22
No.	ISSUE / REVISION	DD/MM/YY

This drawing is copyright protected and may not be reproduced or used for purposes other than execution of the described work without the express written consent of J.L. Richards & Associates Limited.

VERIFY SHEET SIZE AND SCALES. BAR TO THE RIGHT IS 25mm IF THIS IS A FULL SIZE DRAWING.

SCALE: N.T.S.

CLIENT: **minto Communities**

CONSULTANT: **JLR J.L. Richards ENGINEERS - ARCHITECTS - PLANNERS**

CONSULTANT: **R.E. HUNT LIMITED** (PROFESSIONAL STAMP)

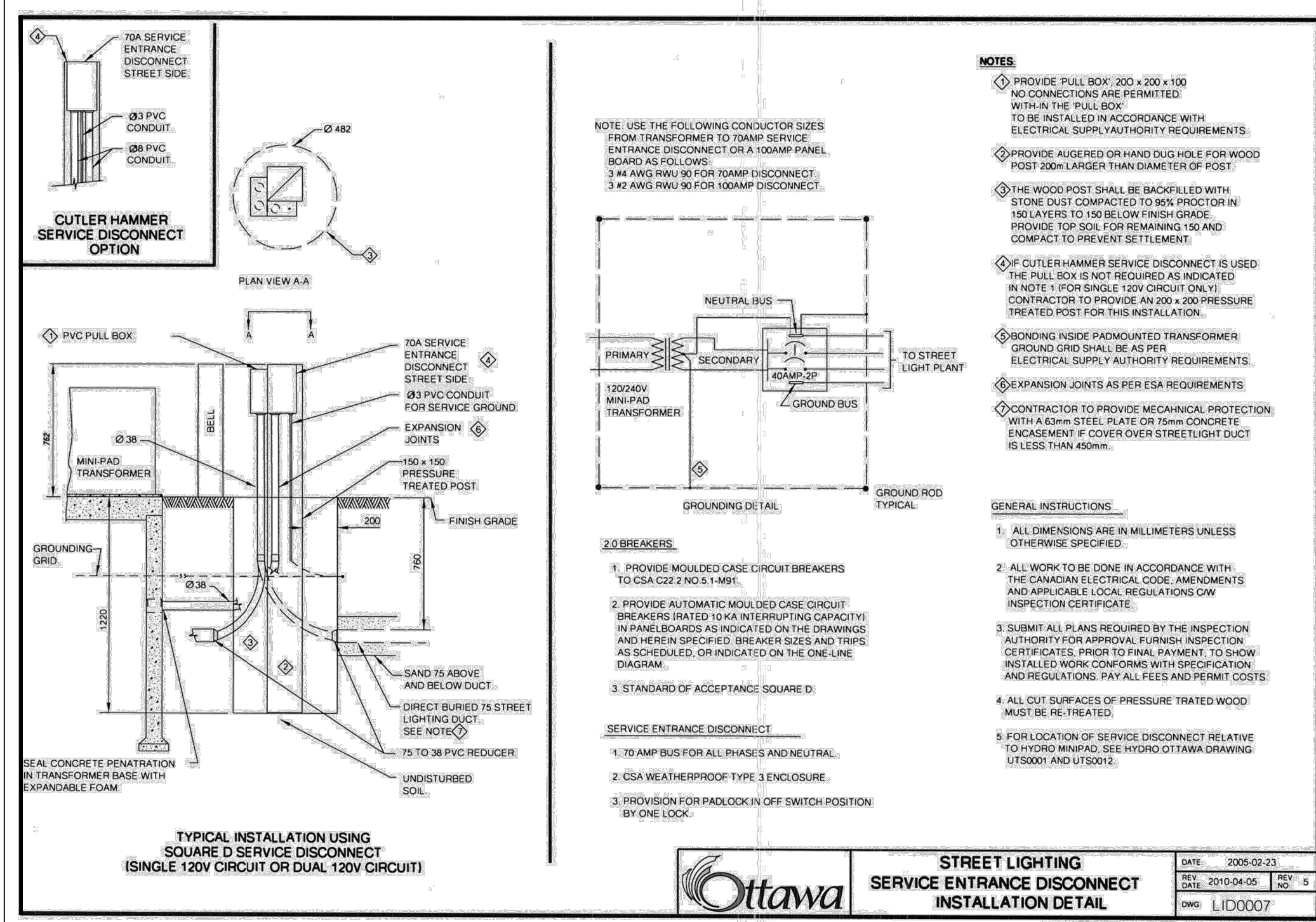
PROJECT: **ARCADIA STAGE 6**

450 HUNTMAR DRIVE

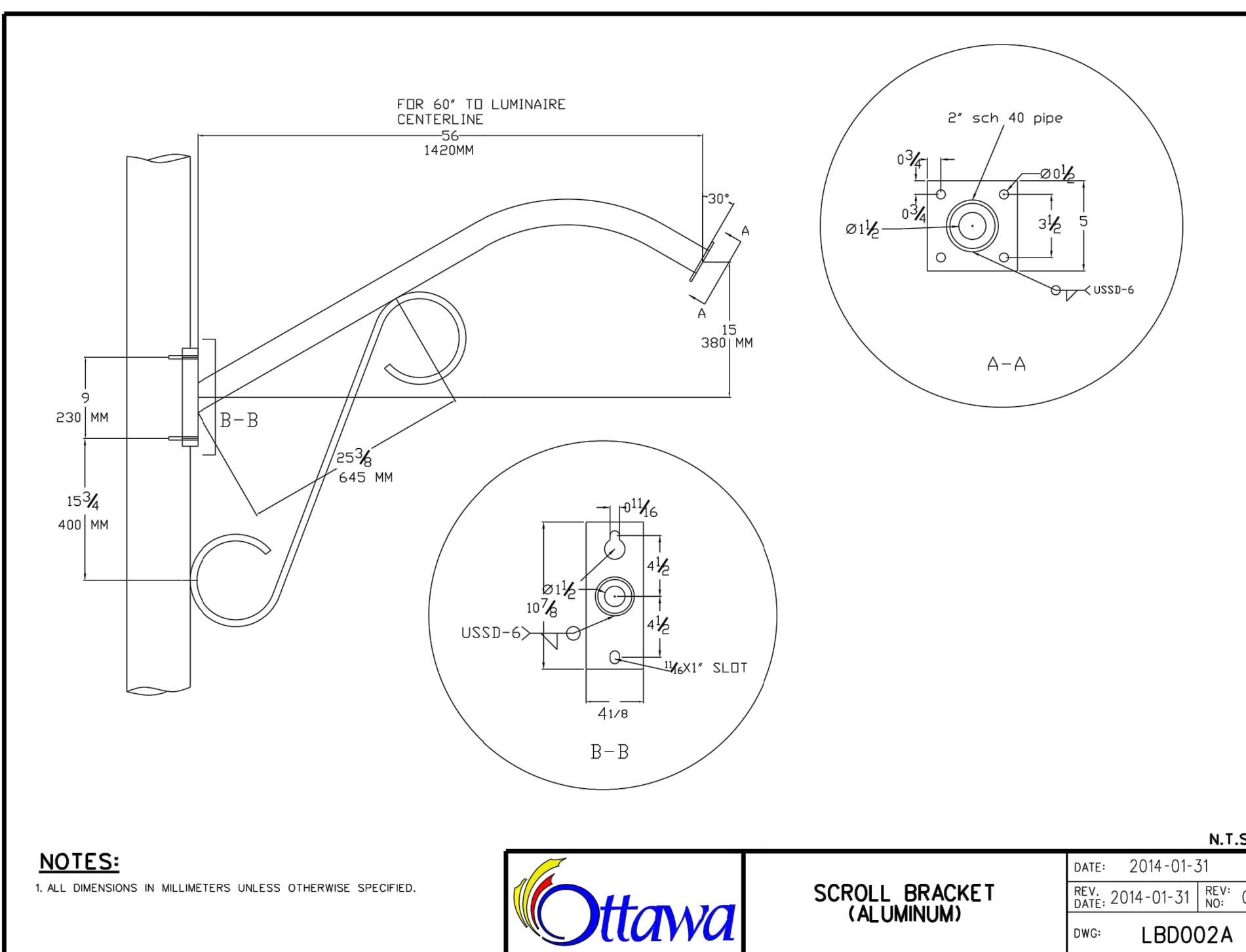
DRAWING: **ELECTRICAL DETAILS**

DESIGN: OS
DRAWN: OS
CHECKED: RH
JLR #: 26299-006

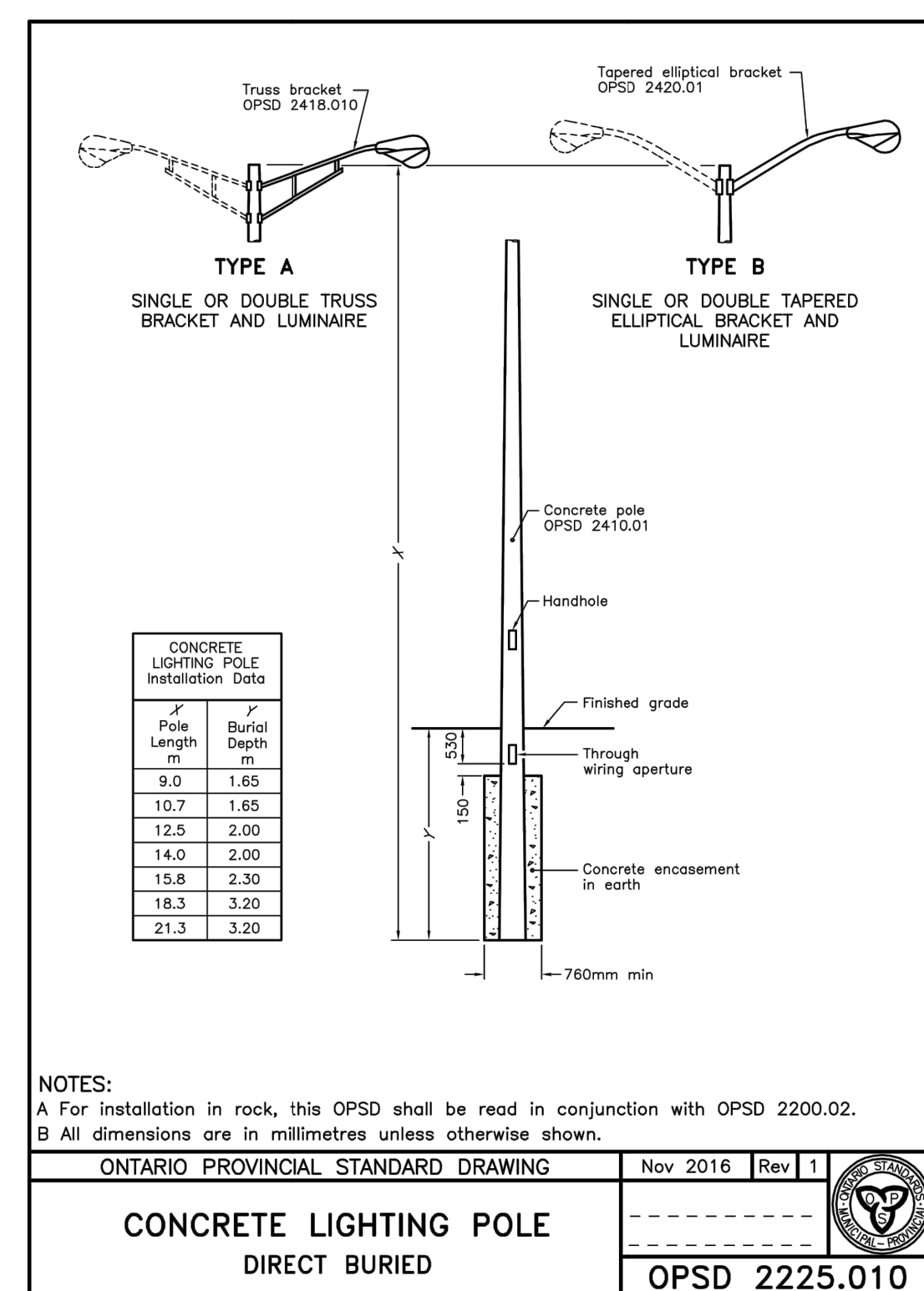
DRAWING #: **E02**



Ottawa STREET LIGHTING SERVICE ENTRANCE DISCONNECT INSTALLATION DETAIL DATE: 2009-03-23 REV: 2010-04-06 REV: 4 DWG: LID0007



Ottawa SCROLL BRACKET (ALUMINUM) DATE: 2014-01-31 REV: 2014-01-31 REV: 0 DWG: LBD002A



ONTARIO PROVINCIAL STANDARD DRAWING Nov 2016 Rev 1

CONCRETE LIGHTING POLE DIRECT BURIED

OPSD 2225.010

File Location: V:\2000\026299-006 - Arcadia Stage 02-Designs-Electrical\AutoCAD For Visual\26299-006 ELECTRICAL DETAILS.dwg

PLOT DATE: July 18, 2022 1:53:05 PM

Statistics							Targets	
Description	Symbol	Avg	Min	Avg/Min	Type	CLASSIFICATION	Avg	Avg/Min
I - STREET 1 / STREET 2 NORTH	+	8.2 lux	2.5 lux	3.3:1	INTERSECTION	LOCAL	8.0 lux	6.0:1
I - STREET 1 / STREET 2 SOUTH	+	10.0 lux	2.4 lux	4.2:1	INTERSECTION	LOCAL	8.0 lux	6.0:1
I - STREET 1 / STREET 3	+	10.4 lux	4.6 lux	2.3:1	INTERSECTION	LOCAL	8.0 lux	6.0:1
I - STREET 1 / STREET 4	+	8.6 lux	3.0 lux	2.9:1	INTERSECTION	LOCAL	8.0 lux	6.0:1
I - STREET 1 / STREET 5	+	8.8 lux	4.1 lux	2.1:1	INTERSECTION	LOCAL	8.0 lux	6.0:1
I - STREET 1 / STREET 6	+	8.9 lux	3.3 lux	2.7:1	INTERSECTION	LOCAL	8.0 lux	6.0:1
I - STREET 2 / STREET 3	+	8.9 lux	3.6 lux	2.5:1	INTERSECTION	LOCAL	8.0 lux	6.0:1
I - STREET 2 / STREET 4	+	8.5 lux	4.5 lux	1.9:1	INTERSECTION	LOCAL	8.0 lux	6.0:1
STREET 1 - ENTRANCE	+	7.1 lux	1.9 lux	3.7:1	ROAD	LOCAL	4.0 lux	6.0:1
STREET 3	+	8.0 lux	2.5 lux	3.2:1	ROAD	LOCAL	4.0 lux	6.0:1
STREET 5	+	7.2 lux	2.2 lux	3.3:1	ROAD	LOCAL	4.0 lux	6.0:1
STREET 6	+	8.9 lux	3.9 lux	2.3:1	ROAD	LOCAL	4.0 lux	6.0:1

FIXTURE AND POLE SCHEDULE:

TYPE:	FIXTURE:	POLE:
Y A	L40U LED PENDANT LUMINAIRE 55W LED - ROADWAY LUMINAIRE - 3000K L40U-STM-55W48LED3K-G2-C-LE2	MADISON CONCRETE OCTAGONAL POLE 9.1m MANUFACTURED BY USI MA-300-B-2-BE-60-F-OTT WITH 1.4m BRACKET

NOTE:
ALL LUMINAIRES ARE TO BE COMPLETE WITH LUMEN IQ ADAPTIVE NODE A440 PHOTOCCELL. CONTRACTOR TO INSTALL CONTROL NODE ADDITIONAL IDENTIFICATION STICKER ON DRAWINGS AT EACH STREET LIGHT POLE LOCATION. COORDINATE WITH CITY OF OTTAWA STREET LIGHT PROJECT COORDINATOR.

NOTES:

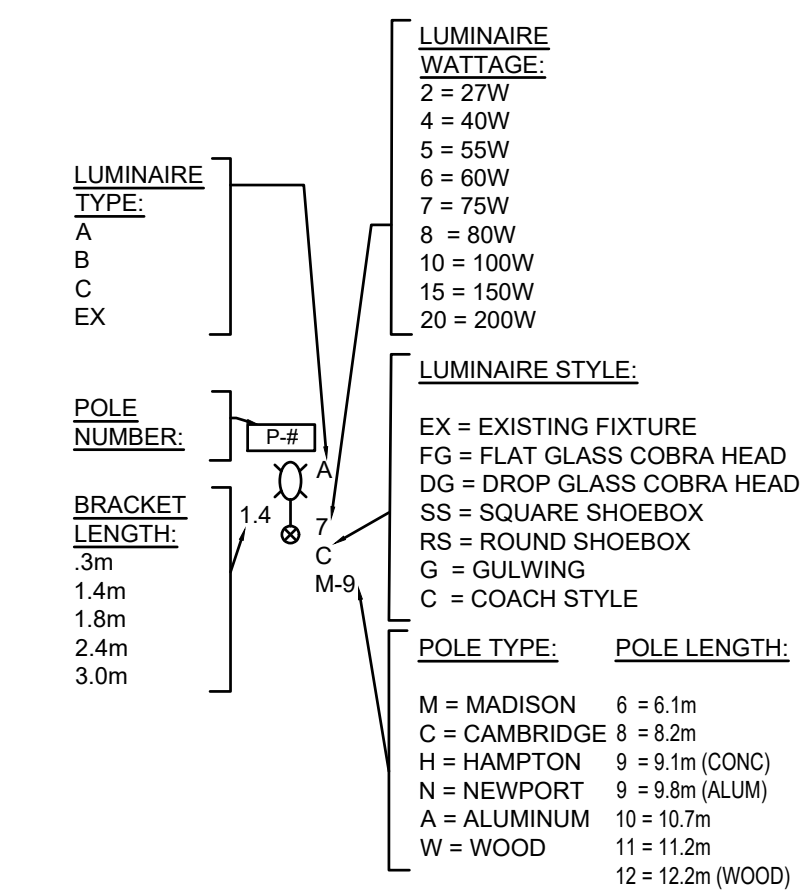
- ALL FIXTURE POLES TO HAVE INTEGRAL FUSING AND PHOTO CELL.
- UNLESS NOTED OTHERWISE ALL UNDERGROUND WIRING TO BE MINIMUM #8 TWJ OR RWJ TYPE, SIZED SO THAT MAXIMUM VOLTAGE DROP AT THE END OF THE CIRCUIT DOES NOT EXCEED 5% OF SUPPLY VOLTAGE. GROUNDING WIRING (LAST POLE AND EVERY FIFTH POLE) #8 AWG CU RWJ CONDUCTOR SHOULD BE USED.
- ALL ROADS CROSSING ARE TO BE CONCRETE ENCASED AS PER CITY OF OTTAWA SPECIFICATION, c/w SPARE DUCT.
- ALL DIRECT BURIED CONDUIT TO BE INSTALLED AS PER CITY OF OTTAWA AND HYDRO OTTAWA SPECIFICATIONS.
- ALL DIRECT BURIED CONDUIT TO BE MINIMUM 75mm PVC TYPE DB2 CONDUIT, REFER TO CITY OF OTTAWA SPECIFICATION LD0001A AND HYDRO OTTAWA UDS0014.
- PROVIDE GROUND RODS AS SHOWN ON ELECTRICAL WIRING DRAWING.
- ALL EMPTY CONDUIT TO BE c/w NYLON PULL STRING.

WORK IN PROGRESS

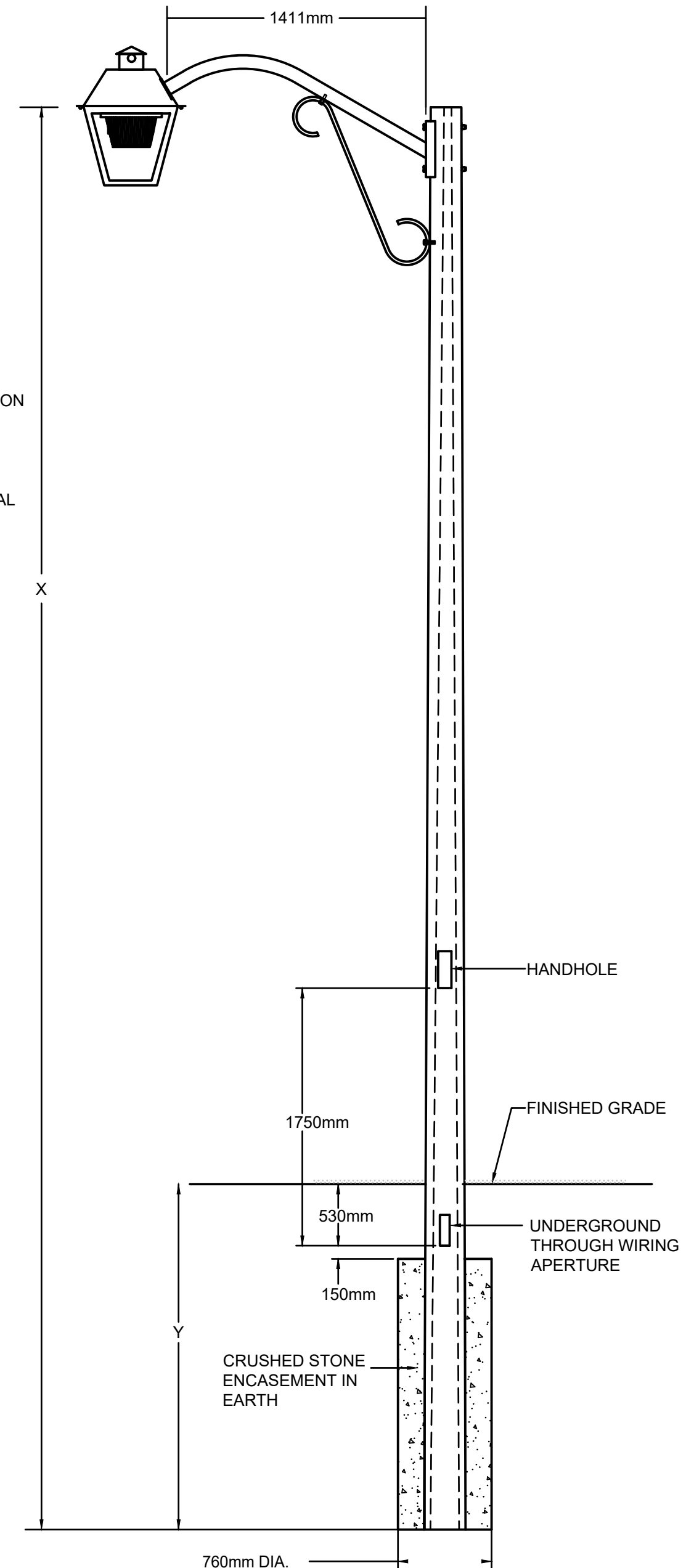
1 WIRING DIAGRAM
E03 SCALE: N.T.S.

GENERAL NOTES:

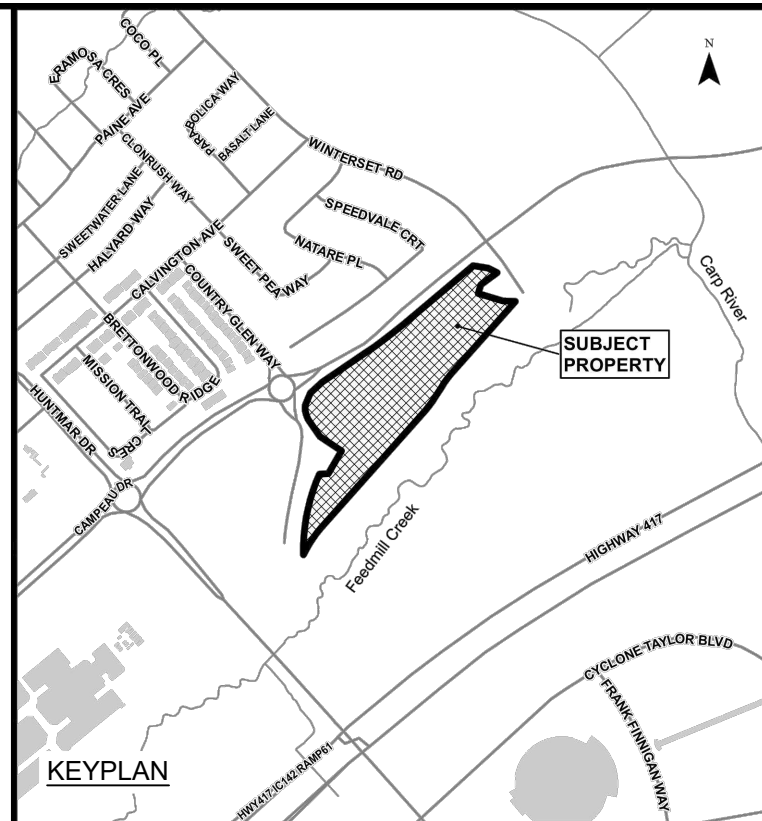
- ALL STREETLIGHT MATERIALS AND INSTALLATIONS MUST COMPLY WITH CITY OF OTTAWA STANDARDS AND SPECIFICATIONS.



2 LUMINAIRE DETAIL
E03 SCALE: N.T.S.



3 CONCRETE STREET LIGHT POLE DETAIL
E03 SCALE: N.T.S.



LEGEND:

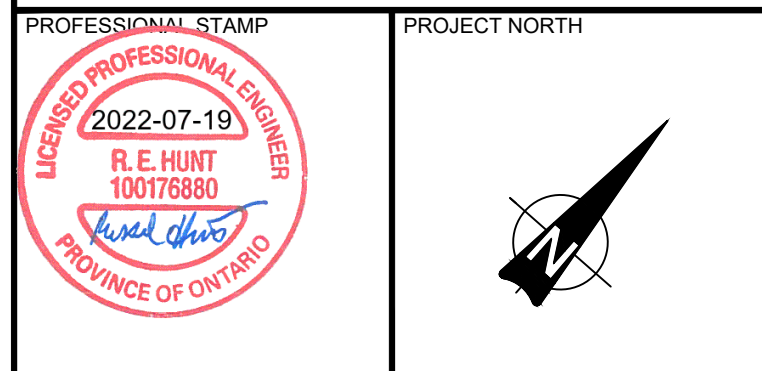
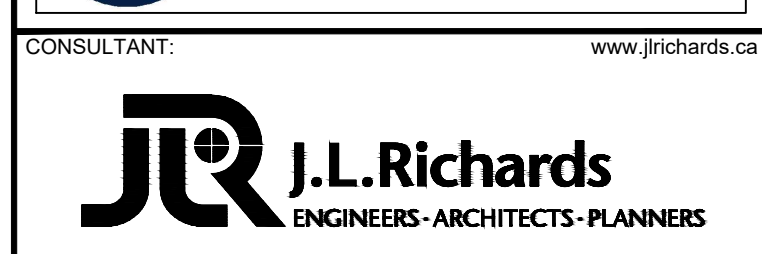
	STREET LIGHT CABLES
	CONCRETE ENCASED DUCT
	2H, 1B, 1C, 1SL DENOTES NUMBER OF DUCTS
	55W LED STREET LIGHT
	GROUND ROD

PRELIMINARY DESIGN
THESE DOCUMENTS ARE NOT COMPLETE IN ALL DETAILS AND MAY BE SUBJECT TO CHANGE AS DESIGN DEVELOPMENT AND CODE REVIEW IS ADVANCED.

01	ISSUED TO CITY FOR REVIEW FIRST ENGINEERING SUBMISSION	19/07/22
No.	ISSUE / REVISION	DD/MM/YY

This drawing is copyright protected and may not be reproduced or used for purposes other than execution of the described work without the express written consent of J.L. Richards & Associates Limited.

VERIFY SHEET SIZE AND SCALES. BAR TO THE RIGHT IS 25mm IF THIS IS A FULL SIZE DRAWING.
SCALE: N.T.S.



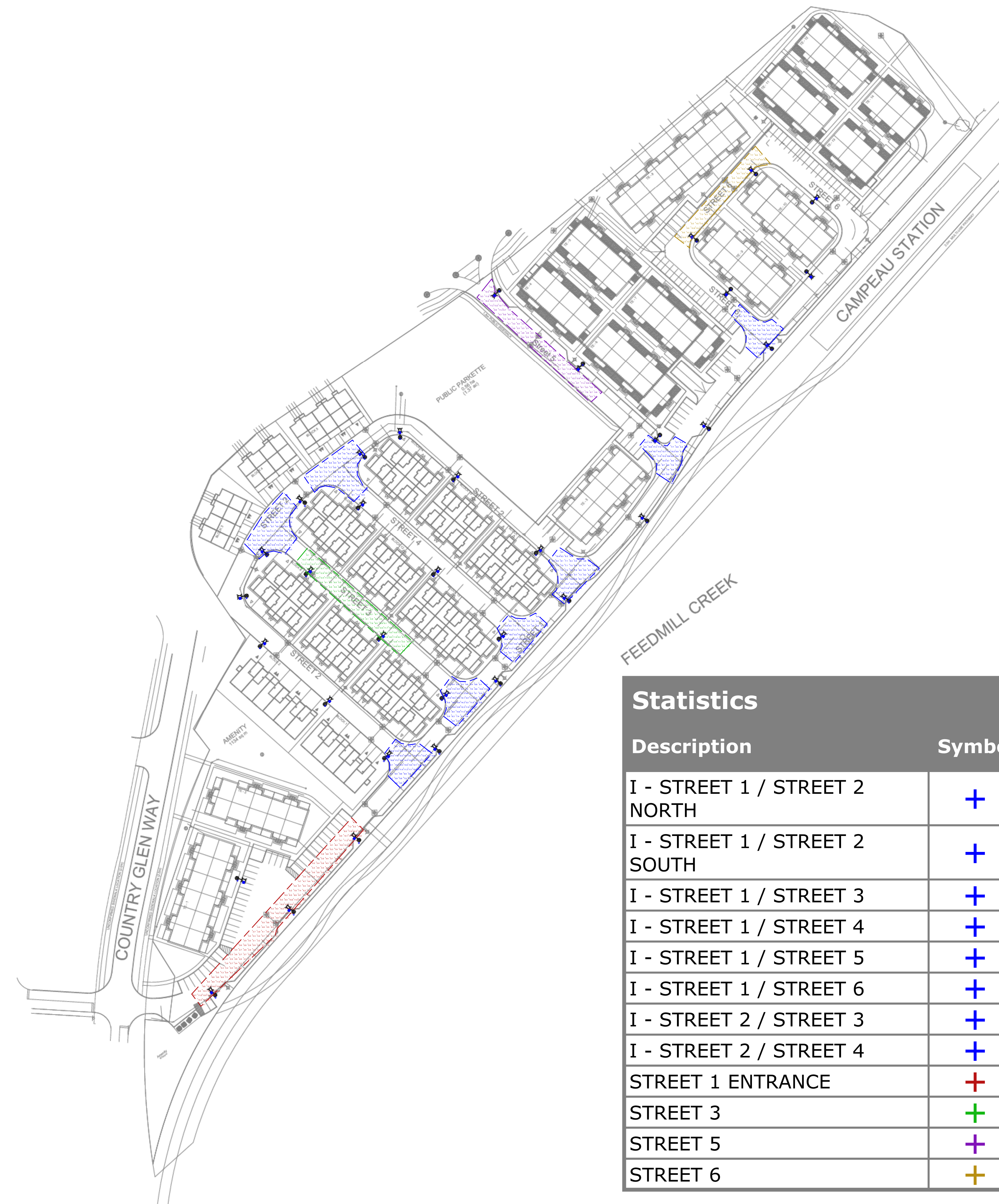
PROJECT: ARCADIA STAGE 6
450 HUNTMAR DRIVE

DRAWING: ELECTRICAL WIRING DIAGRAM & LIGHTING STATISTICS

DESIGN: OS	DRAWING #:
DRAWN: OS	E03
CHECKED: RH	
JLR #: 26299-006	



Schedule												
Symbol	Label	Quantity	Manufacturer	Catalog Number	Description	Lamp	Number Lamps	Filename	Lumens Per Lamp	Light Loss Factor	Wattage	
□	A	34	SIGNIFY Lumec	L40U-STM-55W48LED3K-G2-C-LE2	L40U Pendant, 48 LED's, 3000K CCT, TYPE LE2 OPTIC, CLEAR GLOBE	(3) LEDgine ARRAY(S) DRIVEN AT 350mA	1	L40U-STM-55W48LED3K-G2-C-LE2.IES	4710	0.9	55.1	



Statistics

Description	Symbol	Avg	Max	Min	Max/Min	Avg/Min
I - STREET 1 / STREET 2 NORTH	+	8.2 lux	19.0 lux	2.5 lux	7.6:1	3.3:1
I - STREET 1 / STREET 2 SOUTH	+	10.0 lux	19.3 lux	2.4 lux	8.0:1	4.2:1
I - STREET 1 / STREET 3	+	10.4 lux	20.6 lux	4.6 lux	4.5:1	2.3:1
I - STREET 1 / STREET 4	+	8.6 lux	20.8 lux	3.0 lux	6.9:1	2.9:1
I - STREET 1 / STREET 5	+	8.8 lux	18.5 lux	4.1 lux	4.5:1	2.1:1
I - STREET 1 / STREET 6	+	8.9 lux	20.2 lux	3.3 lux	6.1:1	2.7:1
I - STREET 2 / STREET 3	+	8.9 lux	20.8 lux	3.6 lux	5.8:1	2.5:1
I - STREET 2 / STREET 4	+	8.5 lux	19.8 lux	4.5 lux	4.4:1	1.9:1
STREET 1 ENTRANCE	+	7.1 lux	19.7 lux	1.9 lux	10.4:1	3.7:1
STREET 3	+	8.0 lux	21.3 lux	2.5 lux	8.5:1	3.2:1
STREET 5	+	7.2 lux	20.2 lux	2.2 lux	9.2:1	3.3:1
STREET 6	+	8.9 lux	20.3 lux	3.9 lux	5.2:1	2.3:1

26299-006
ARCADIA STAGE 6
2022-07-18

Designer
OS
Date
2022-07-18
Scale
Not to Scale
Drawing No.
Summary