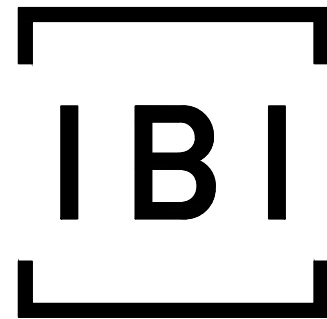
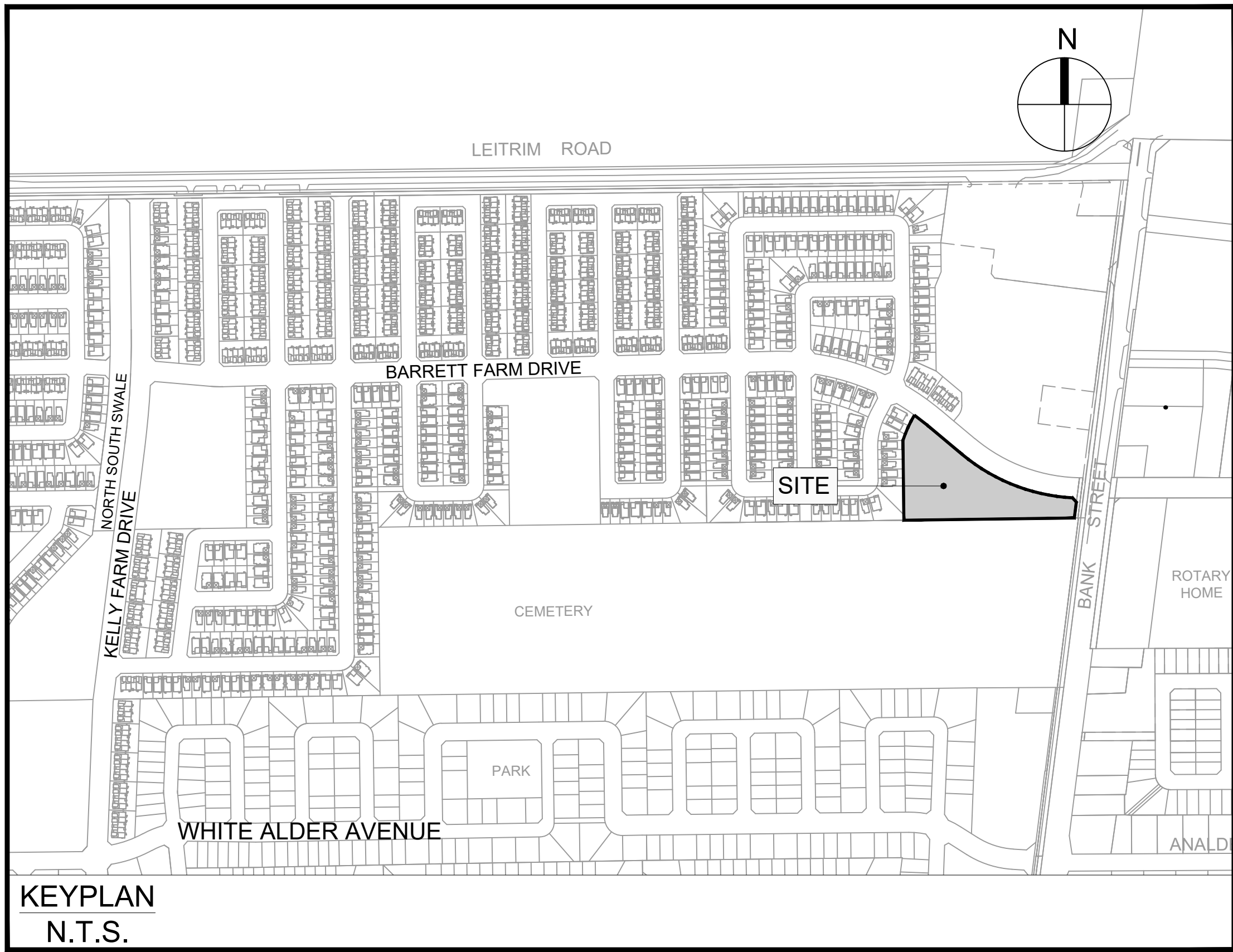


BARRETT BLOCK 178



IBI GROUP
 400 – 333 Preston Street
 Ottawa ON K1S 5N4 Canada
 tel 613 225 1311 fax 613 225 9868
 ibigroup.com

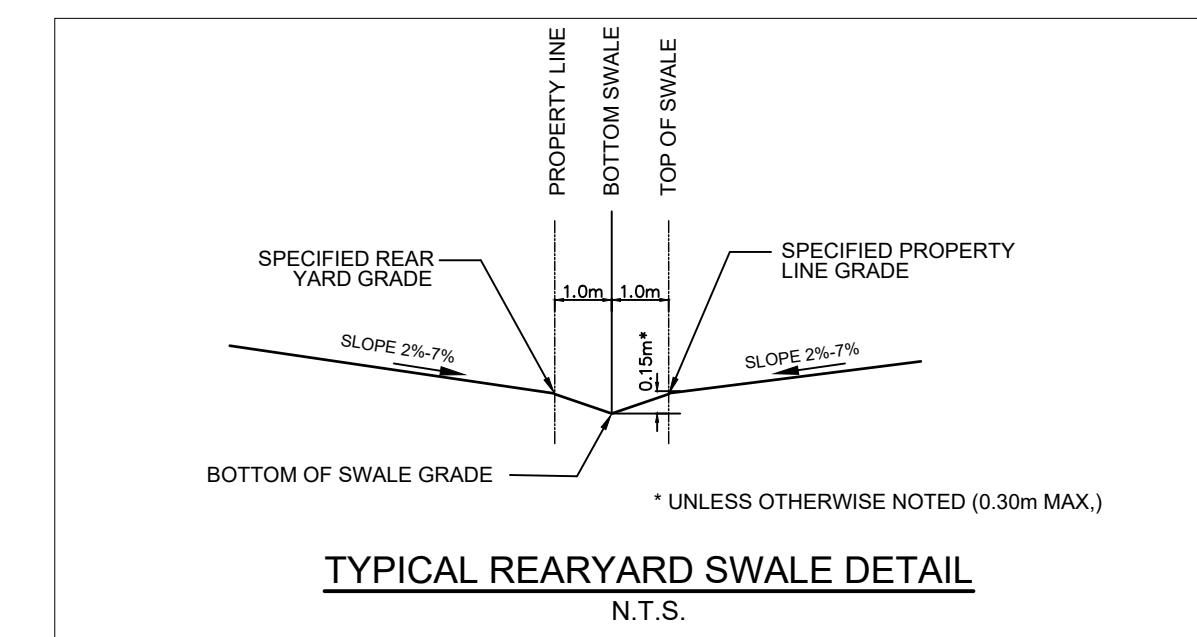
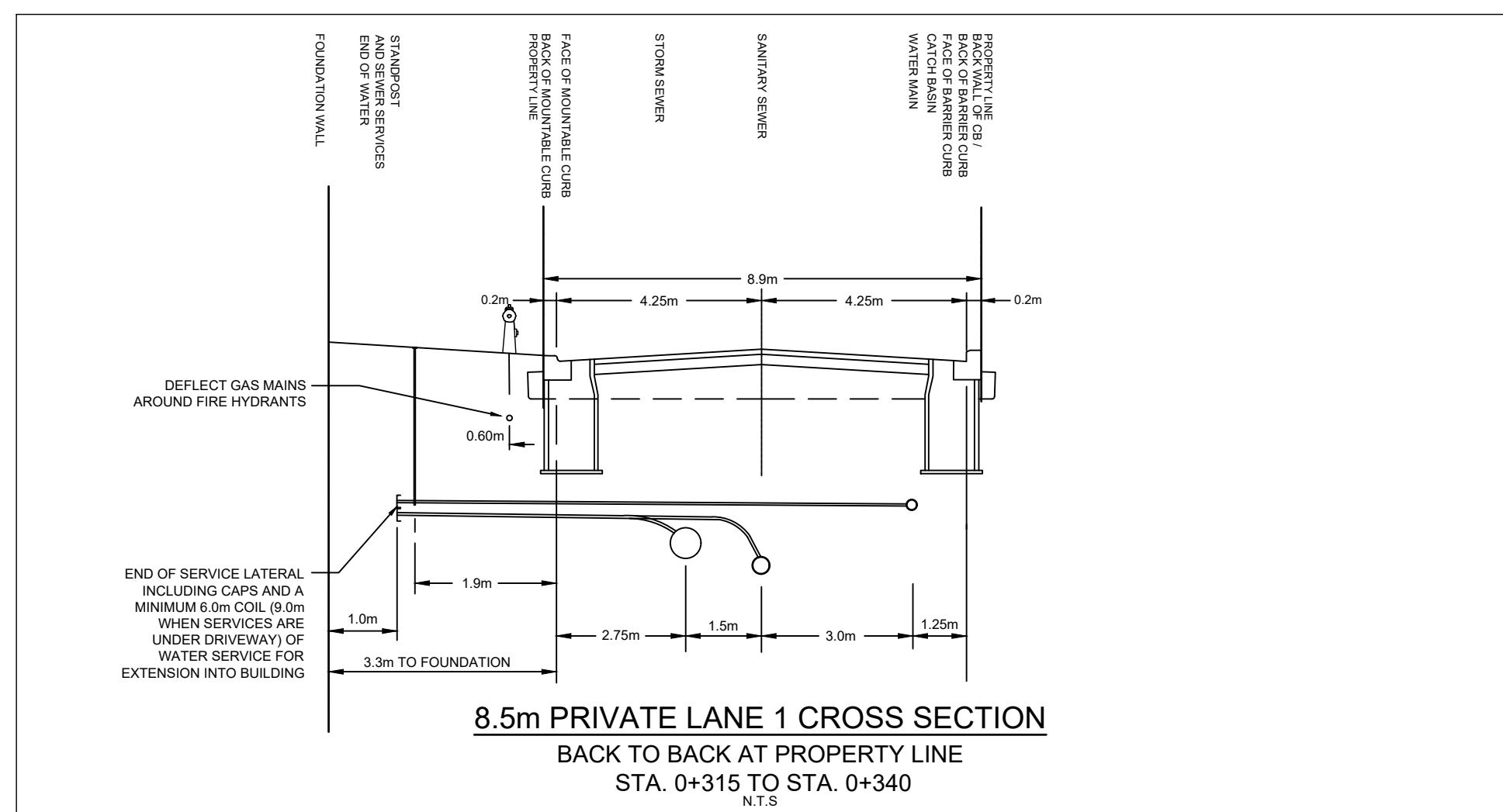
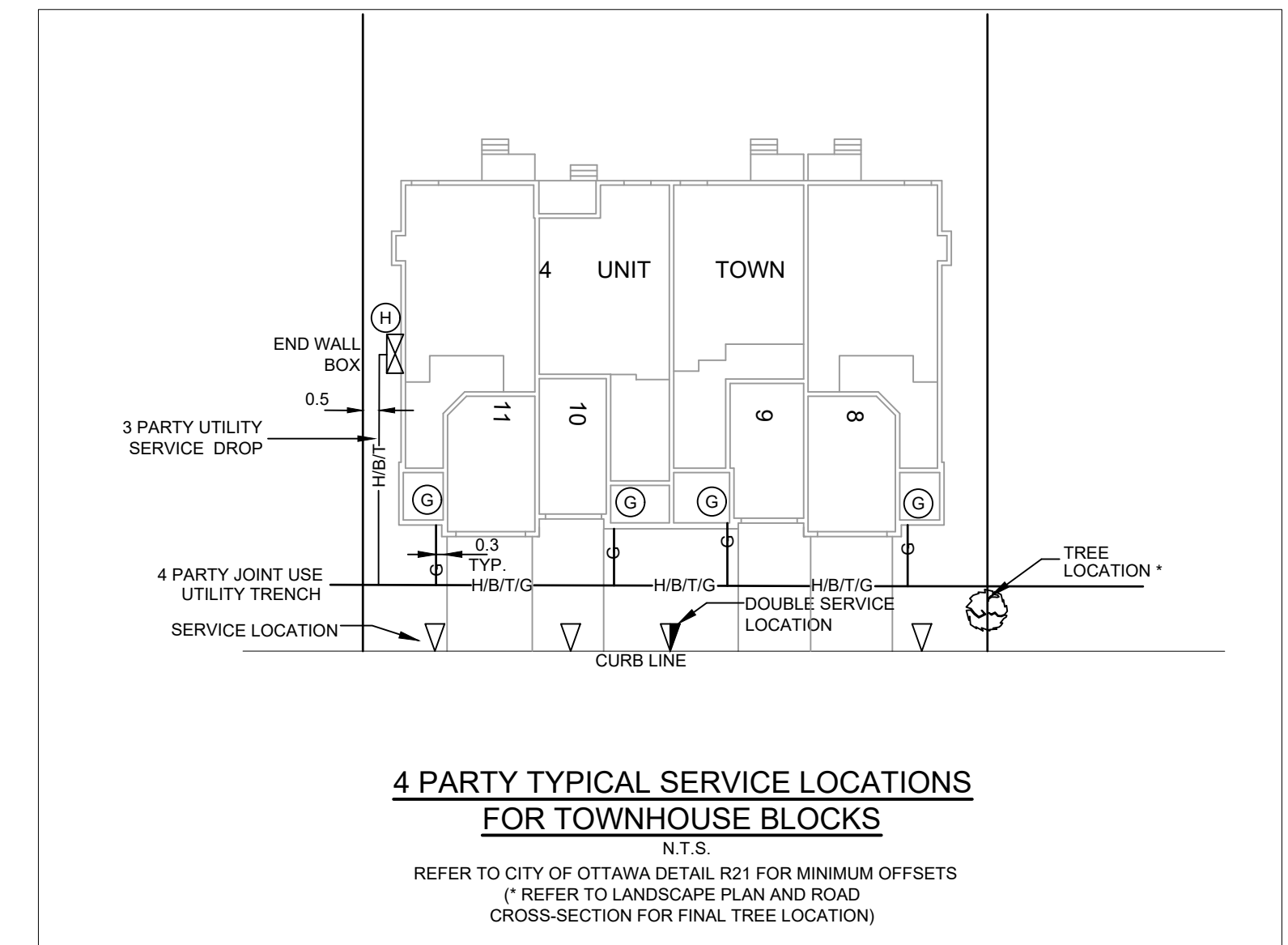
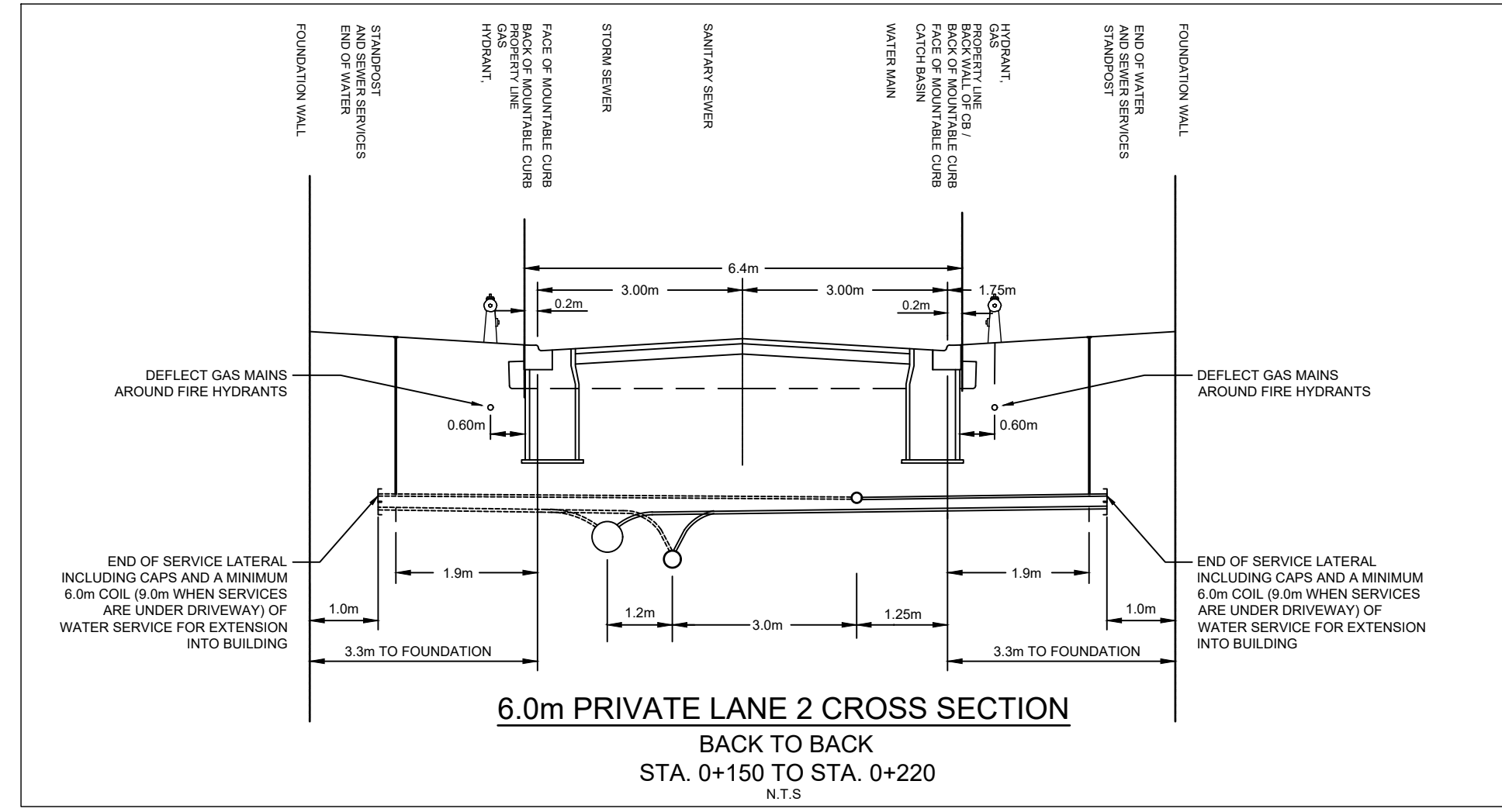
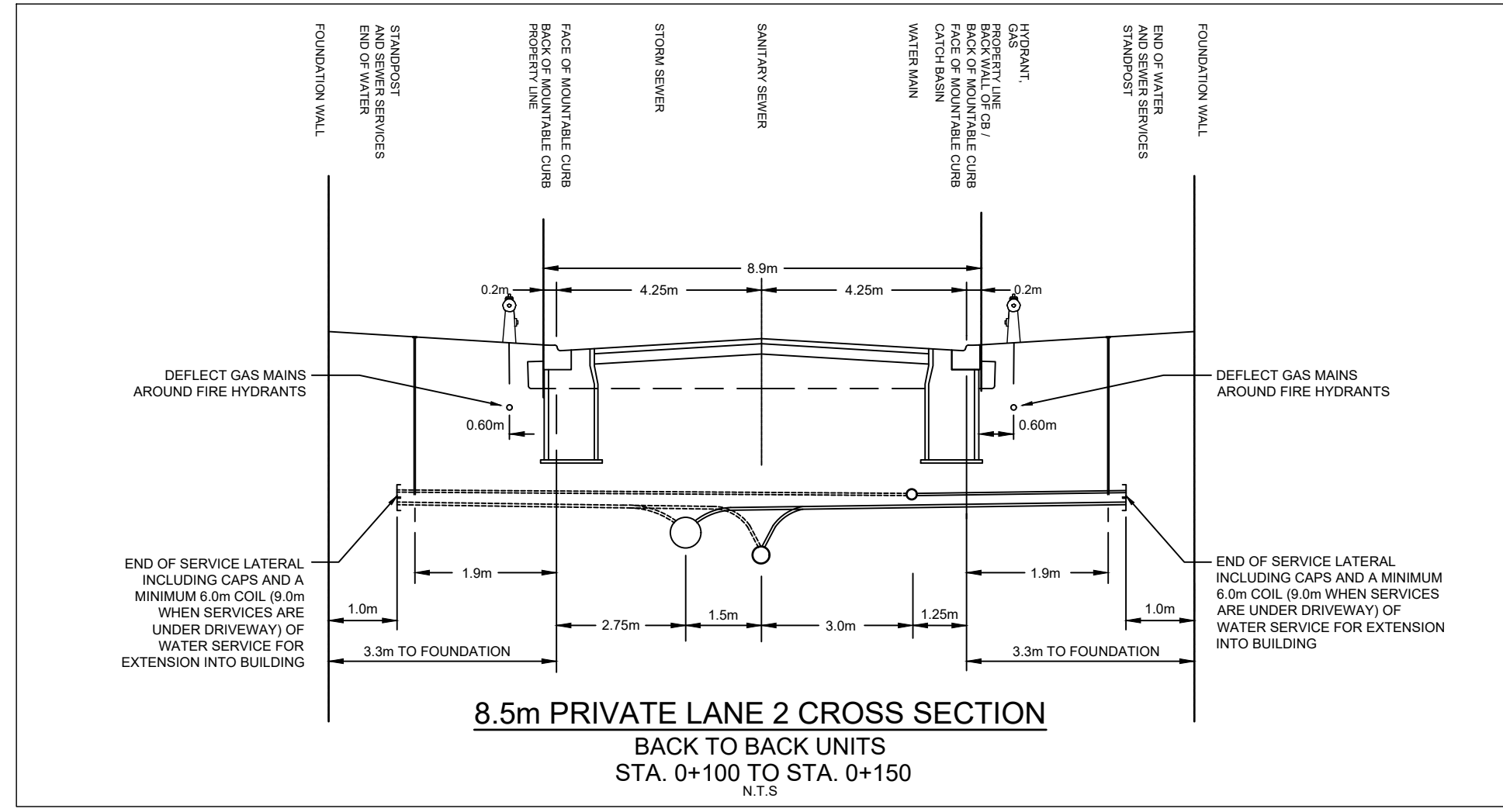
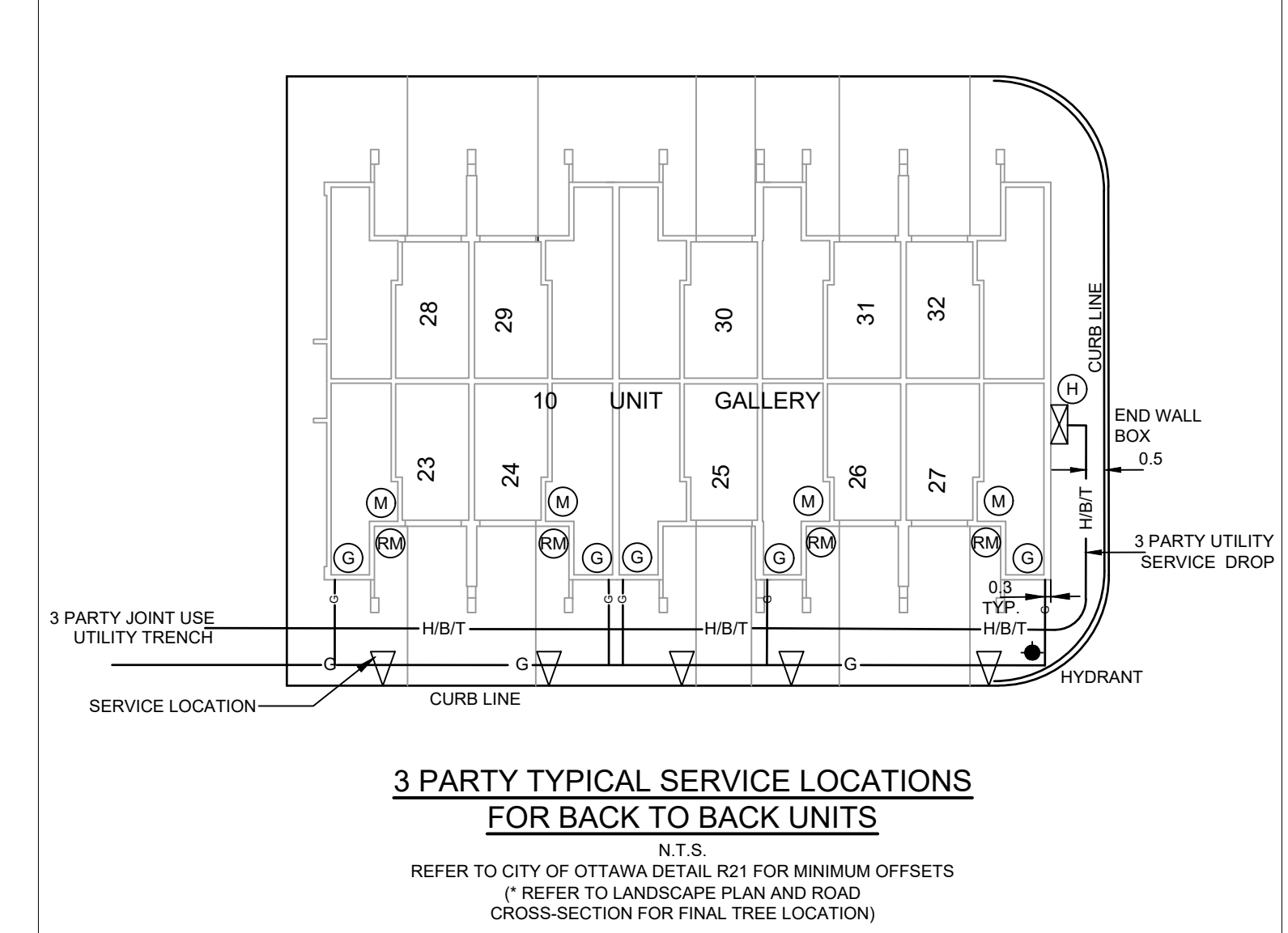
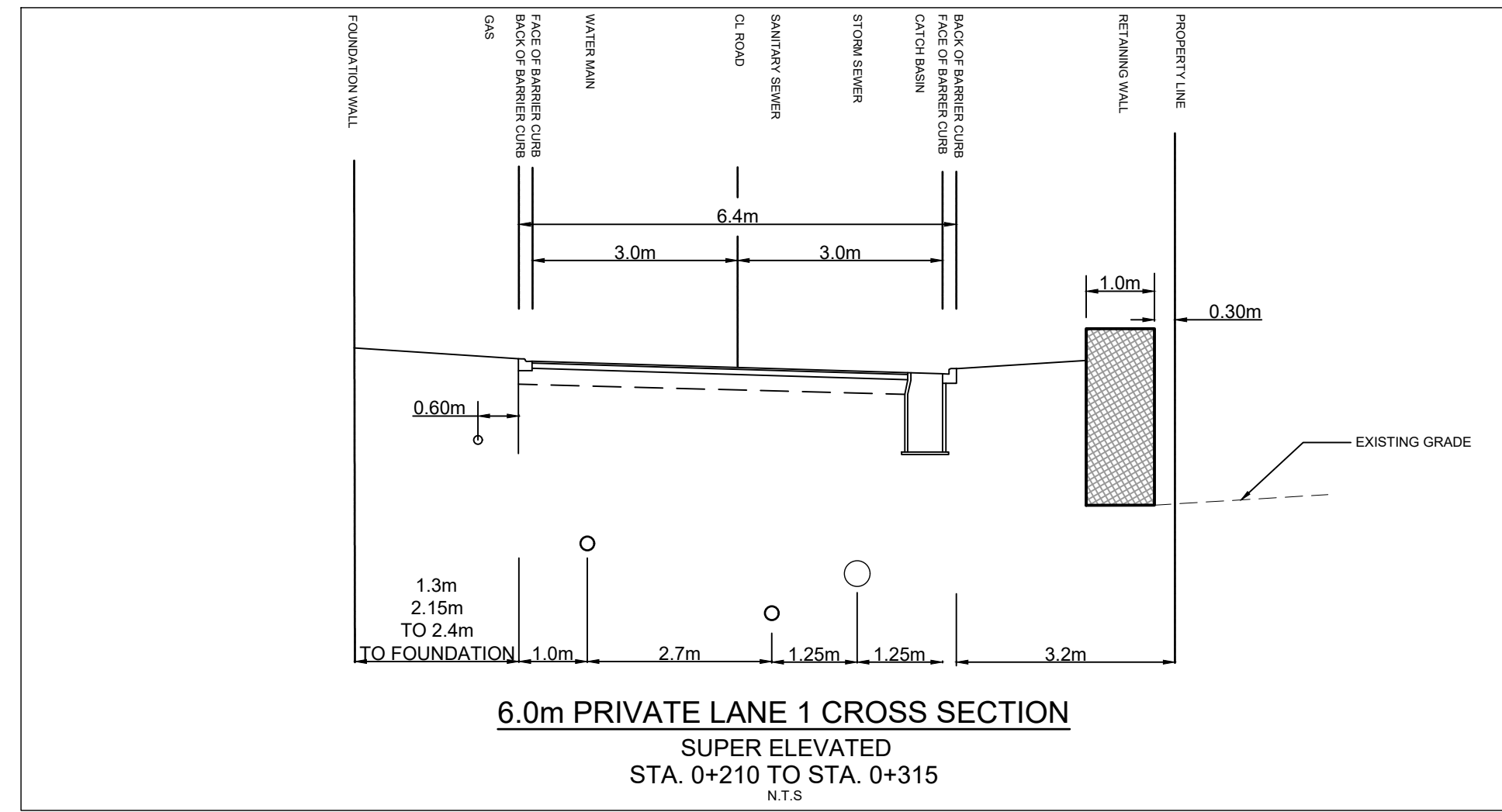
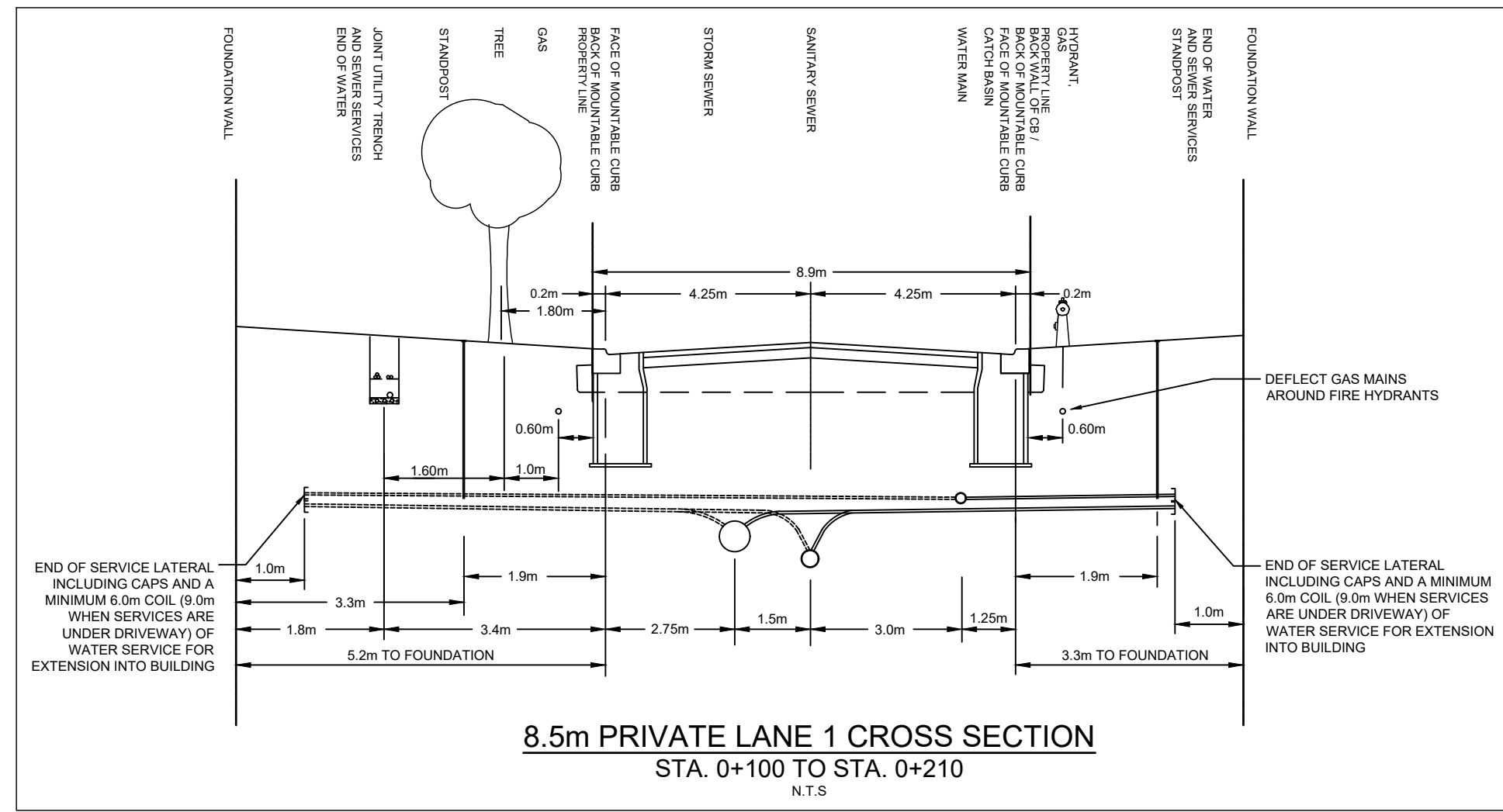


Sheet List Table	
Sheet Number	Sheet Title
000	COVER
001	GENERAL PLAN
010	NOTES LEGEND CB DATA
011	STREET SECTIONS
100	PRIVATE LANE 1
101	PRIVATE LANE 2
200	GRADING PLAN
400	SANITARY DRAINAGE AREA PLAN
500	STORM DRAINAGE AREA PLAN
600	PONDING PLAN
900	SEDIMENT AND EROSION CONTROL PLAN

BARRETT CO-TENANCY

CITY OF OTTAWA

CONTRACT NO. 135925



CLIENT
BARRETT CO-TENANCY

COPYRIGHT
 This drawing has been prepared solely for the intended use. This any reproduction or distribution for any purpose other than authorized by IBI Group is forbidden. When dimensions shall have precedence over scaled dimensions. Contractors shall verify and be responsible for all dimensions and conditions on the job, and IBI Group shall be informed of any variations from the dimensions and conditions shown on the drawing. Shop drawings shall be submitted to IBI Group for general confirmation before proceeding with fabrication.

IBI Group Professional Services (Canada) Inc.
 is a member of the IBI Group of companies.

ISSUES		
No.	DESCRIPTION	DATE
1	SUBMISSION NO. 1 FOR CITY REVIEW	2022-05-10
2		
3		
4		
5		
6		
7		
8		

SEE 010, 011, 012 FOR NOTES, LEGEND, CB TABLE, STREET SECTIONS AND DETAILS.

KEY PLAN LETRIM ROAD
 RELLY FARM DRIVE
 BARRETT FARM DRIVE
 RANK STREET
 KEY PLAN
 N.T.S.

CONSULTANTS

SEAL

IBI GROUP
 Suite 400 - 333 Preston Street
 Ottawa ON K1S 5N4 Canada
 Tel: 613 225 1311 / 613 241 3300 Fax: 613 225 9868
 ibigroup.com

PROJECT
BARRETT BLOCK 178

PROJECT NO:
 135925

DRAWN BY: M.M. **CHECKED BY:** A.C.

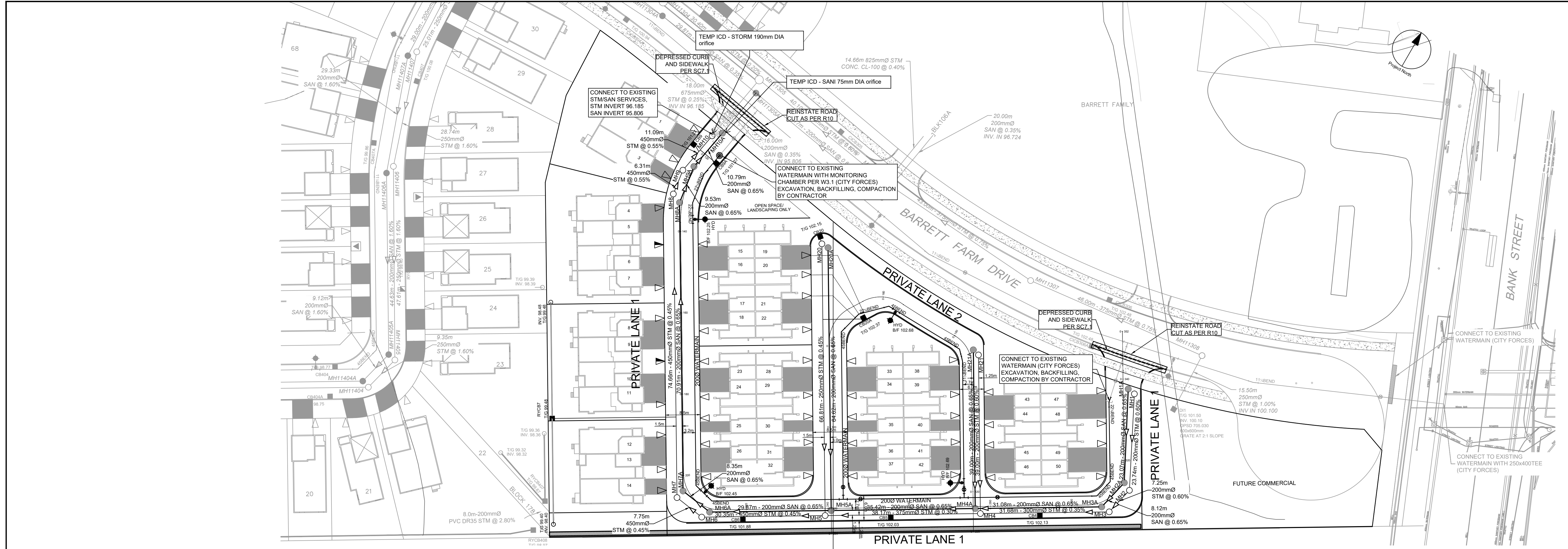
PROJECT MGR: R.M. **APPROVED BY:** J.I.M.

SHEET TITLE
STREET SECTIONS

SHEET NUMBER **011** **ISSUE** **1**

CITY FILE No. D07-
 CITY PLAN No. xxxxx

File Location: \\135925_013_Design\04_Civil\Sheet\011 STREET SECTIONS.dwg Last Saved: May 5, 2022, by rmmine Plotted: Tuesday, May 10, 2022 11:28:18 AM by Marisa Milne



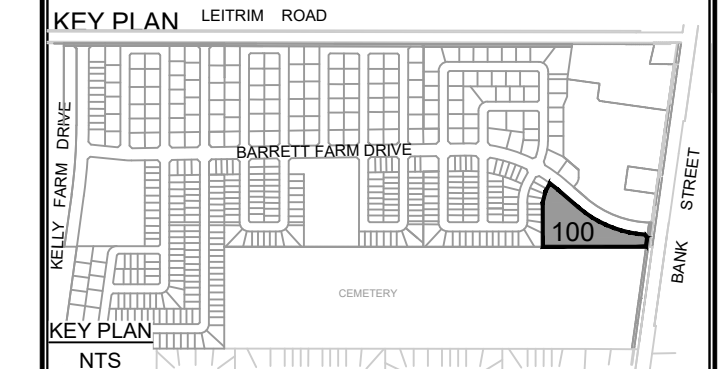
CLIENT
BARRETT CO-TENANCY

COPYRIGHT
This drawing has been prepared solely for the intended use. Any reproduction or distribution for any purpose other than authorized by IBI Group is forbidden. Written dimensions shall have precedence over scaled dimensions. Contractors shall verify and be responsible for all dimensions and conditions on the job, and IBI Group shall be informed of any variations from the dimensions and conditions shown on the drawing. Shop drawings shall be submitted to IBI Group for general concurrence before proceeding with fabrication.
IBI Group Professional Services (Canada) Inc.
is a member of the IBI Group of companies.

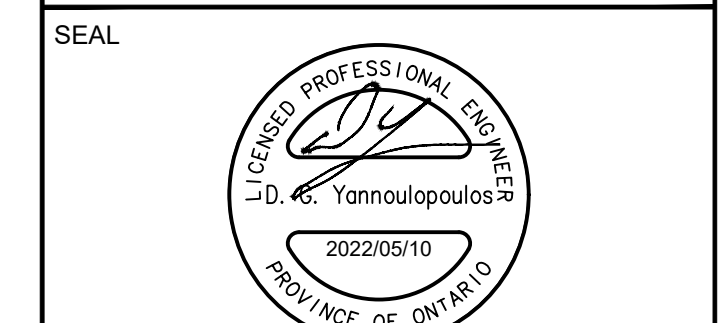
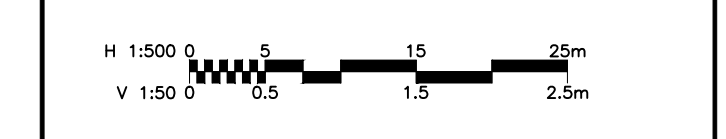
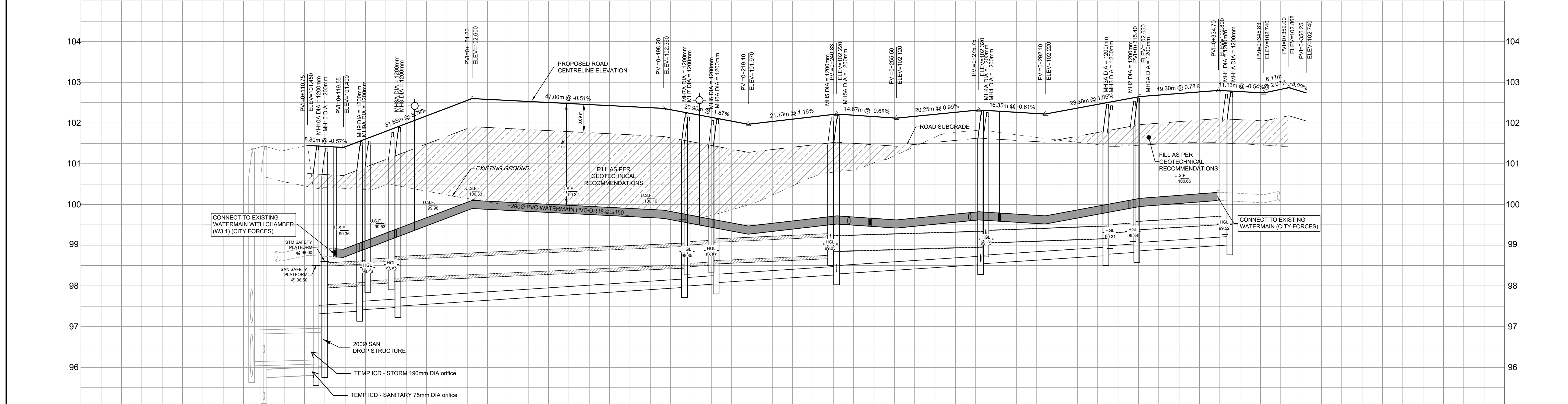
ISSUES

No.	DESCRIPTION	DATE
1	SUBMISSION NO.1 FOR CITY REVIEW	2022-05-10
2		
3		
4		
5		
6		
7		
8		

SEE 010, 011, 012 FOR NOTES, LEGEND, CB TABLE, STREET SECTIONS AND DETAILS.



CONSULTANTS



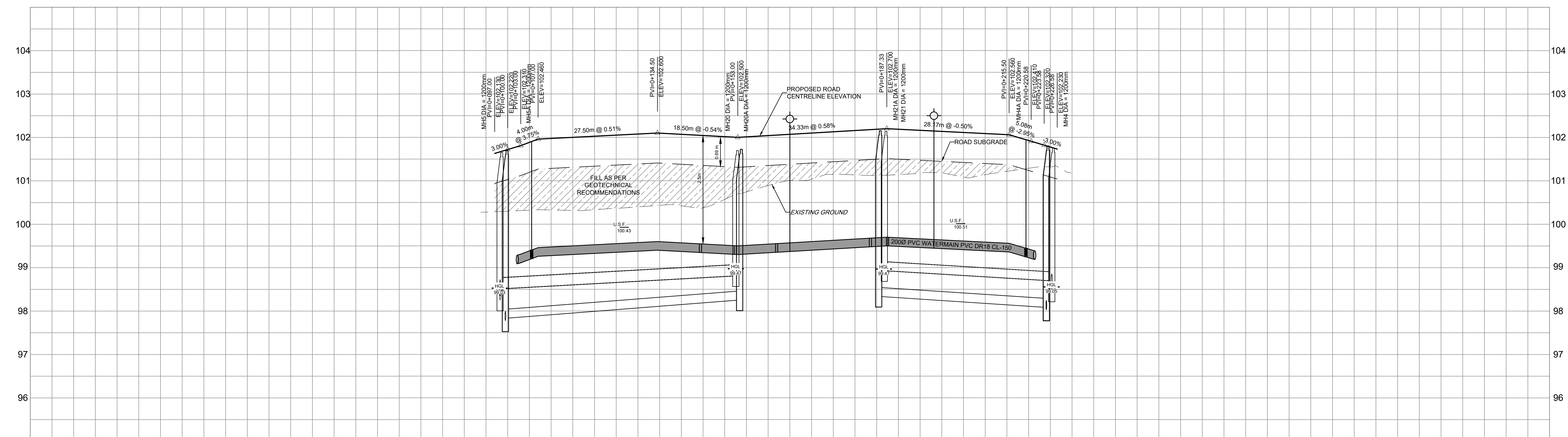
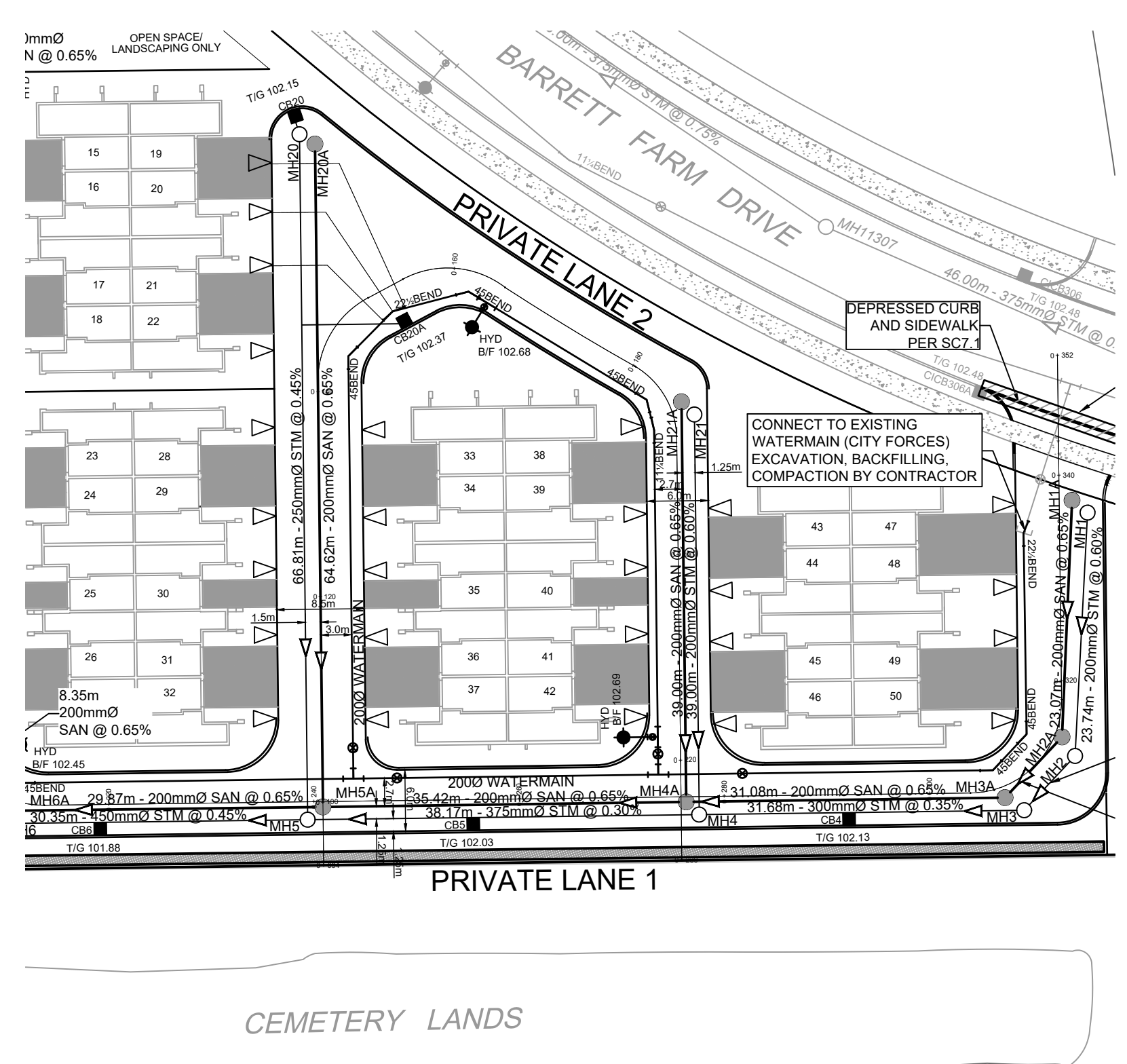
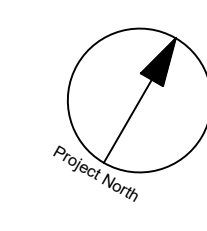
ROAD GRADE	TOP OF WATERMAIN	STM SEWER INVERT	SAN SEWER INVERT	STATION	ROAD GRADE	TOP OF WATERMAIN	STM SEWER INVERT	SAN SEWER INVERT	STATION
101.450	98.812	11.05m 450mmØ CONC. CL 100-D STM @ 0.55%	10.79m 200mmØ PVC DR-35 SAN @ 0.65%	0+100	102.453	99.853	7.75m 450mmØ CONC. CL 100-D STM @ 0.45%	70.91m - 200mmØ PVC DR-35 SAN @ 0.65%	0+180
101.450	98.812	11.05m 450mmØ CONC. CL 100-D STM @ 0.55%	10.79m 200mmØ PVC DR-35 SAN @ 0.65%	0+120	102.453	99.853	7.75m 450mmØ CONC. CL 100-D STM @ 0.45%	70.91m - 200mmØ PVC DR-35 SAN @ 0.65%	0+180
101.450	98.812	11.05m 450mmØ CONC. CL 100-D STM @ 0.55%	10.79m 200mmØ PVC DR-35 SAN @ 0.65%	0+140	102.453	99.853	7.75m 450mmØ CONC. CL 100-D STM @ 0.45%	70.91m - 200mmØ PVC DR-35 SAN @ 0.65%	0+180
101.450	98.812	11.05m 450mmØ CONC. CL 100-D STM @ 0.55%	10.79m 200mmØ PVC DR-35 SAN @ 0.65%	0+160	102.453	99.853	7.75m 450mmØ CONC. CL 100-D STM @ 0.45%	70.91m - 200mmØ PVC DR-35 SAN @ 0.65%	0+180
101.450	98.812	11.05m 450mmØ CONC. CL 100-D STM @ 0.55%	10.79m 200mmØ PVC DR-35 SAN @ 0.65%	0+180	102.453	99.853	7.75m 450mmØ CONC. CL 100-D STM @ 0.45%	70.91m - 200mmØ PVC DR-35 SAN @ 0.65%	0+180
101.450	98.812	11.05m 450mmØ CONC. CL 100-D STM @ 0.55%	10.79m 200mmØ PVC DR-35 SAN @ 0.65%	0+200	102.453	99.853	7.75m 450mmØ CONC. CL 100-D STM @ 0.45%	70.91m - 200mmØ PVC DR-35 SAN @ 0.65%	0+180
101.450	98.812	11.05m 450mmØ CONC. CL 100-D STM @ 0.55%	10.79m 200mmØ PVC DR-35 SAN @ 0.65%	0+220	102.453	99.853	7.75m 450mmØ CONC. CL 100-D STM @ 0.45%	70.91m - 200mmØ PVC DR-35 SAN @ 0.65%	0+180
101.450	98.812	11.05m 450mmØ CONC. CL 100-D STM @ 0.55%	10.79m 200mmØ PVC DR-35 SAN @ 0.65%	0+240	102.453	99.853	7.75m 450mmØ CONC. CL 100-D STM @ 0.45%	70.91m - 200mmØ PVC DR-35 SAN @ 0.65%	0+180
101.450	98.812	11.05m 450mmØ CONC. CL 100-D STM @ 0.55%	10.79m 200mmØ PVC DR-35 SAN @ 0.65%	0+260	102.453	99.853	7.75m 450mmØ CONC. CL 100-D STM @ 0.45%	70.91m - 200mmØ PVC DR-35 SAN @ 0.65%	0+180
101.450	98.812	11.05m 450mmØ CONC. CL 100-D STM @ 0.55%	10.79m 200mmØ PVC DR-35 SAN @ 0.65%	0+280	102.453	99.853	7.75m 450mmØ CONC. CL 100-D STM @ 0.45%	70.91m - 200mmØ PVC DR-35 SAN @ 0.65%	0+180
101.450	98.812	11.05m 450mmØ CONC. CL 100-D STM @ 0.55%	10.79m 200mmØ PVC DR-35 SAN @ 0.65%	0+300	102.453	99.853	7.75m 450mmØ CONC. CL 100-D STM @ 0.45%	70.91m - 200mmØ PVC DR-35 SAN @ 0.65%	0+180
101.450	98.812	11.05m 450mmØ CONC. CL 100-D STM @ 0.55%	10.79m 200mmØ PVC DR-35 SAN @ 0.65%	0+320	102.453	99.853	7.75m 450mmØ CONC. CL 100-D STM @ 0.45%	70.91m - 200mmØ PVC DR-35 SAN @ 0.65%	0+180
101.450	98.812	11.05m 450mmØ CONC. CL 100-D STM @ 0.55%	10.79m 200mmØ PVC DR-35 SAN @ 0.65%	0+340	102.453	99.853	7.75m 450mmØ CONC. CL 100-D STM @ 0.45%	70.91m - 200mmØ PVC DR-35 SAN @ 0.65%	0+180
101.450	98.812	11.05m 450mmØ CONC. CL 100-D STM @ 0.55%	10.79m 200mmØ PVC DR-35 SAN @ 0.65%	0+360	102.453	99.853	7.75m 450mmØ CONC. CL 100-D STM @ 0.45%	70.91m - 200mmØ PVC DR-35 SAN @ 0.65%	0+180

PROJECT
BARRETT BLOCK 178

PROJECT NO: 135925
DRAWN BY: M.M.
PROJECT MGR: R.M.
SHEET TITLE: PRIVATE LANE 1

CHECKED BY: A.C.
APPROVED BY: J.I.M.

SHEET NUMBER: 100
ISSUE: 1



ROAD GRADE		102.130 102.220 102.310 102.460	102.526	102.600	102.570	102.500	102.541	102.657	102.700	102.637	102.560	102.470 102.470 102.320 102.230	ROAD GRADE
TOP OF WATERMAIN		99.816 99.860	100.026	100.100	100.070	100.000	100.041	100.157	100.200	100.137	100.060	99.827 99.868 99.868	TOP OF WATERMAIN
STM SEWER INVERT		98.755SW 98.844NE 98.725SE 99.075NW	66.81m - 250mmØ PVC DR-35 STM @ 0.45%				99.314SE		99.432SE	39.00m 200mmØ PVC DR-35 STM @ 0.60%			STM SEWER INVERT
SAN SEWER INVERT		98.755SW 98.844NE 98.725SE 98.335NW	64.62m - 200mmØ PVC DR-35 SAN @ 0.65%				98.717SE		98.840SE	39.00m 200mmØ PVC DR-35 SAN @ 0.65%			SAN SEWER INVERT
STATION		0+080	0+100	0+120	0+140	0+160	0+180	0+200	0+220	0+240			STATION

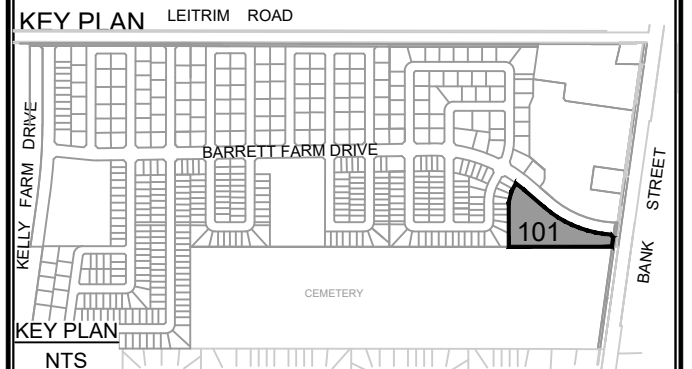
CLIENT
**BARRETT
CO-TENANCY**

COPYRIGHT
This drawing has been prepared solely for the intended use. This any reproduction or distribution for any purpose other than authorized by IBI Group is forbidden. Written dimensions shall have precedence over scaled dimensions. Contractors shall verify and be responsible for all dimensions and conditions on the job, and IBI Group shall be informed of any variations from the dimensions and conditions shown on the drawing. Shop drawings shall be submitted to IBI Group for general concurrence before proceeding with fabrication.
IBI Group Professional Services (Canada) Inc.
is a member of the IBI Group of companies.

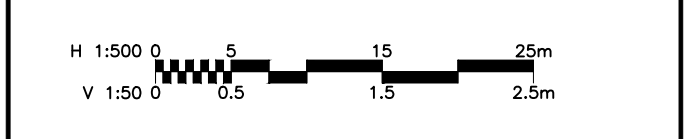
ISSUES

No.	DESCRIPTION	DATE
1	SUBMISSION NO.1 FOR CITY REVIEW	2022-05-10
2		
3		
4		
5		
6		
7		
8		

SEE 010, 011, 012 FOR NOTES, LEGEND, CB TABLE, STREET SECTIONS AND DETAILS



CONSULTANTS



SEAL

IBI GROUP
Suite 400 - 333 Preston Street
Ottawa ON K1S 5N4 Canada
tel 613 225 1311 / 613 241 3300 fax 613 225 9868
ibigroup.com

PROJECT
BARRETT BLOCK 178

PROJECT NO:
135925

DRAWN BY:
M.M.

CHECKED BY:
A.C.

PROJECT MGR:
R.M.

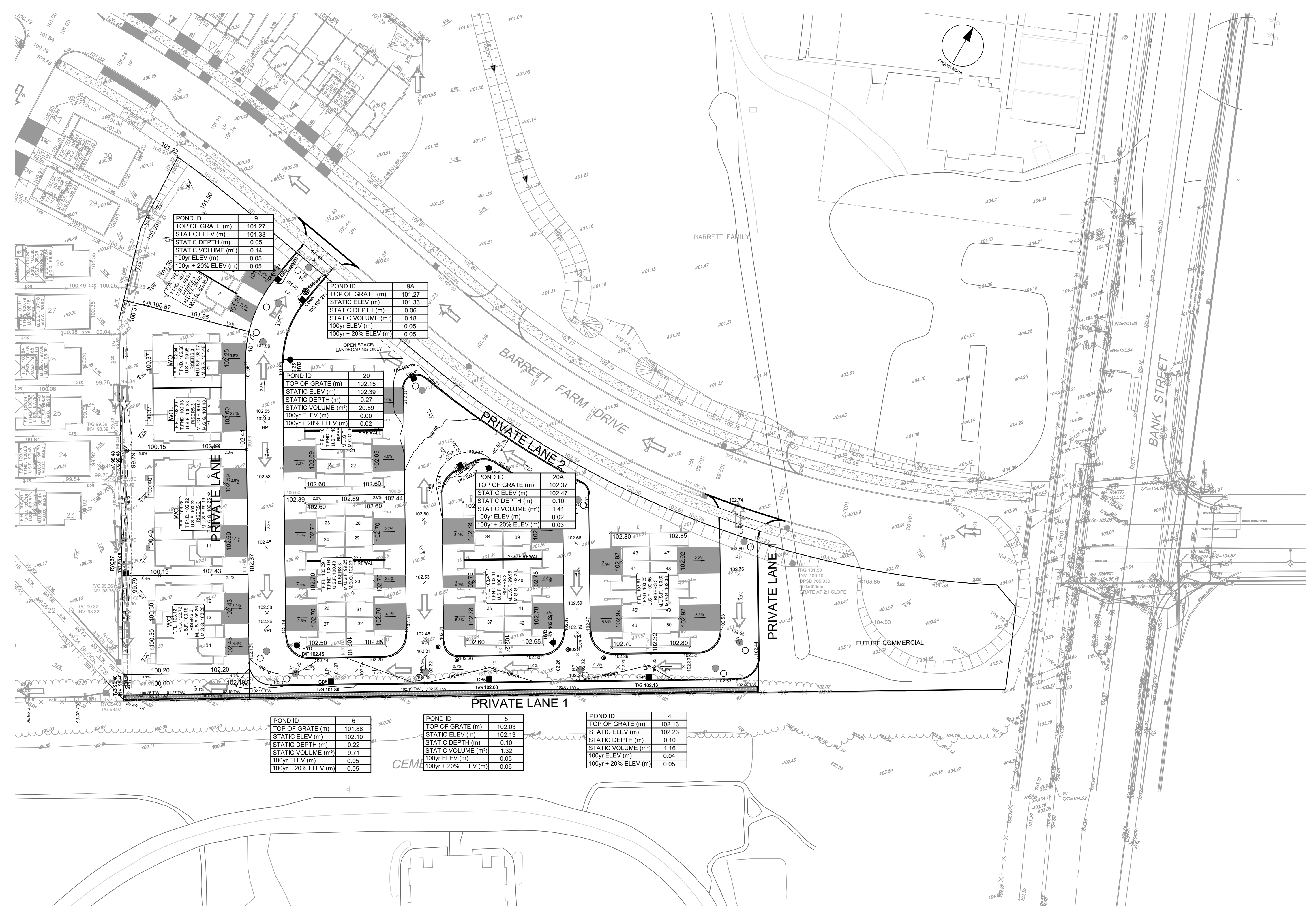
APPROVED BY:
J.I.M.

SHEET TITLE
PRIVATE LANE 2

SHEET NUMBER
101

ISSUE
1

CITY FILE No. D07-135925-101-1
SCALE CHECK
File Location: \\135925_Barrett\101\STREET NO.2.dwg Last Saved: May 6, 2022, 11:29:01 AM by Harian Mhine
Printed: Tuesday, May 10, 2022, 11:29:01 AM by Harian Mhine



POND ID	9
TOP OF GRATE (m)	101.27
STATIC ELEV (m)	101.33
STATIC DEPTH (m)	0.06
STATIC VOLUME (m³)	0.14
100yr ELEV (m)	0.05
100yr + 20% ELEV (m)	0.05

POND ID	9A
TOP OF GRATE (m)	101.27
STATIC ELEV (m)	101.33
STATIC DEPTH (m)	0.06
STATIC VOLUME (m³)	0.18
100yr ELEV (m)	0.05
100yr + 20% ELEV (m)	0.05

POND ID	20
TOP OF GRATE (m)	102.15
STATIC ELEV (m)	102.39
STATIC DEPTH (m)	0.27
STATIC VOLUME (m³)	20.59
100yr ELEV (m)	0.00
100yr + 20% ELEV (m)	0.02

POND ID	20A
TOP OF GRATE (m)	102.37
STATIC ELEV (m)	102.47
STATIC DEPTH (m)	0.10
STATIC VOLUME (m³)	1.41
100yr ELEV (m)	0.02
100yr + 20% ELEV (m)	0.03

POND ID	6
TOP OF GRATE (m)	101.88
STATIC ELEV (m)	102.10
STATIC DEPTH (m)	0.22
STATIC VOLUME (m³)	9.71
100yr ELEV (m)	0.05
100yr + 20% ELEV (m)	0.05

POND ID	5
TOP OF GRATE (m)	102.03
STATIC ELEV (m)	102.13
STATIC DEPTH (m)	0.10
STATIC VOLUME (m³)	1.32
100yr ELEV (m)	0.05
100yr + 20% ELEV (m)	0.06

POND ID	4
TOP OF GRATE (m)	102.13
STATIC ELEV (m)	102.23
STATIC DEPTH (m)	0.10
STATIC VOLUME (m³)	1.16
100yr ELEV (m)	0.04
100yr + 20% ELEV (m)	0.05

CLIENT
BARRETT CO-TENANCY

COPYRIGHT
This drawing has been prepared solely for the intended use. Any reproduction or distribution for any purpose other than authorized by IBI Group is forbidden. When dimensions shall have precedence over scaled dimensions. Contractors shall verify and be responsible for all dimensions and conditions on the job, and IBI Group shall be informed of any variations from the dimensions and conditions shown on the drawing. Shop drawings shall be submitted to IBI Group for general concurrence before proceeding with fabrication.
IBI Group Professional Services (Canada) Inc.
is a member of the IBI Group of companies.

ISSUES

No.	DESCRIPTION	DATE
1	SUBMISSION NO. 1 FOR CITY REVIEW	2022-05-10
2		
3		
4		
5		
6		
7		
8		

SEE 010, 011, 012 FOR NOTES, LEGEND, CB TABLE, STREET SECTIONS AND DETAILS.

KEY PLAN LEITRIM ROAD

KEY PLAN BARRETT FARM DRIVE

KEY PLAN BANK STREET

CONSULTANTS

SCALE 1:500

SEAL

IBI GROUP
Suite 400 - 333 Preston Street
Ottawa ON K1S 5N4 Canada
tel 613 225 1311 / 613 241 3300 fax 613 225 9868
bigroup.com

PROJECT
BARRETT BLOCK 178

PROJECT NO:
135925

DRAWN BY: **M.M.** CHECKED BY: **A.C.**

PROJECT MGR: **R.M.** APPROVED BY: **J.I.M.**

SHEET TITLE
PONDING PLAN

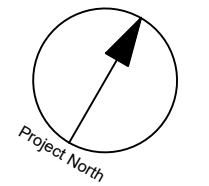
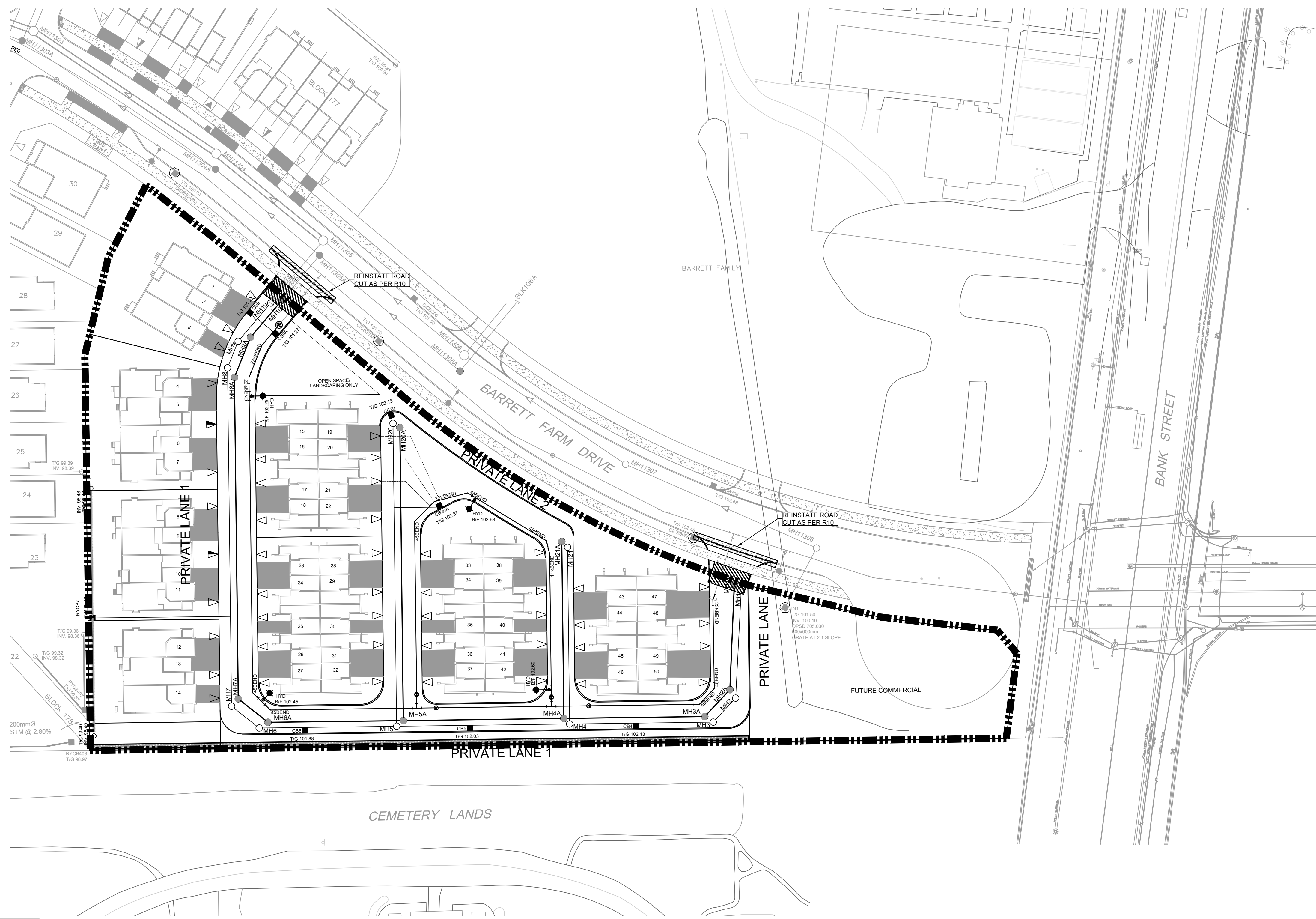
SHEET NUMBER **600** ISSUE **1**

CITY PLAN No. xxxxx

CITY FILE No. D07-

SCALE CHECK

File Location: J:\135925_Barrett\03_Design\04_Civil\Sheet\600_PONDING PLAN.dwg Last Saved: May 8, 2022, by rmmine Plotted: Tuesday, May 10, 2022 11:30:19 AM by Minam Mine



CLIENT
BARRETT CO-TENANCY

COPYRIGHT
This drawing has been prepared solely for the intended use, thus any reproduction or distribution for any purpose other than authorized by IBI Group is forbidden. Written dimensions shall have precedence over scaled dimensions. Contractors shall verify and be responsible for all dimensions and conditions on the job, and IBI Group shall be informed of any variations from the dimensions and conditions shown on the drawing. Shop drawings shall be submitted to IBI Group for general concurrence before proceeding with fabrication.
IBI Group Professional Services (Canada) Inc.
is a member of the IBI Group of companies.

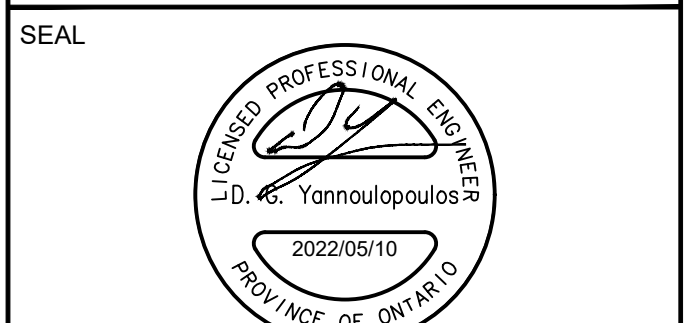
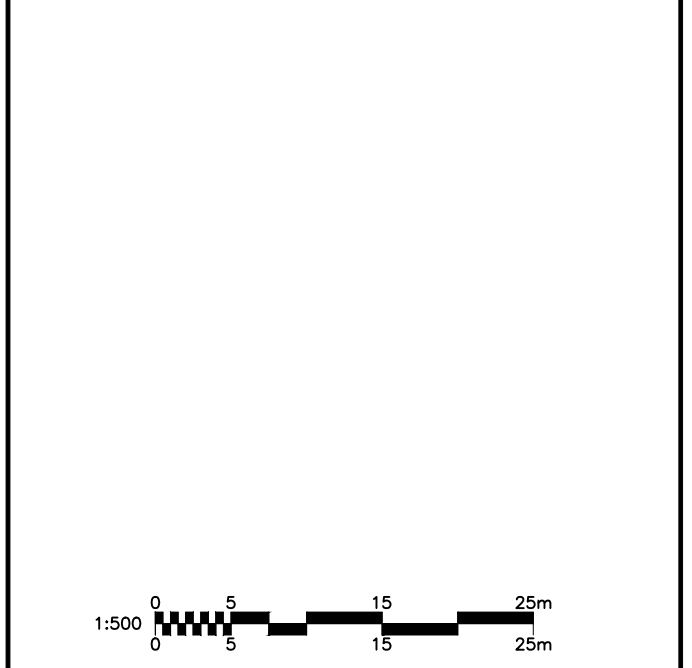
ISSUES

No.	DESCRIPTION	DATE
1	SUBMISSION NO. 1 FOR CITY REVIEW	2022-05-10
2		
3		
4		
5		
6		
7		
8		

SEE 010, 011, 012 FOR NOTES, LEGEND, CB TABLE, STREET SECTIONS AND DETAILS



CONSULTANTS



PROJECT
BARRETT BLOCK 178

PROJECT NO:
135925

DRAWN BY:
M.M.

CHECKED BY:
A.C.

PROJECT MGR:
R.M.

APPROVED BY:
J.I.M.

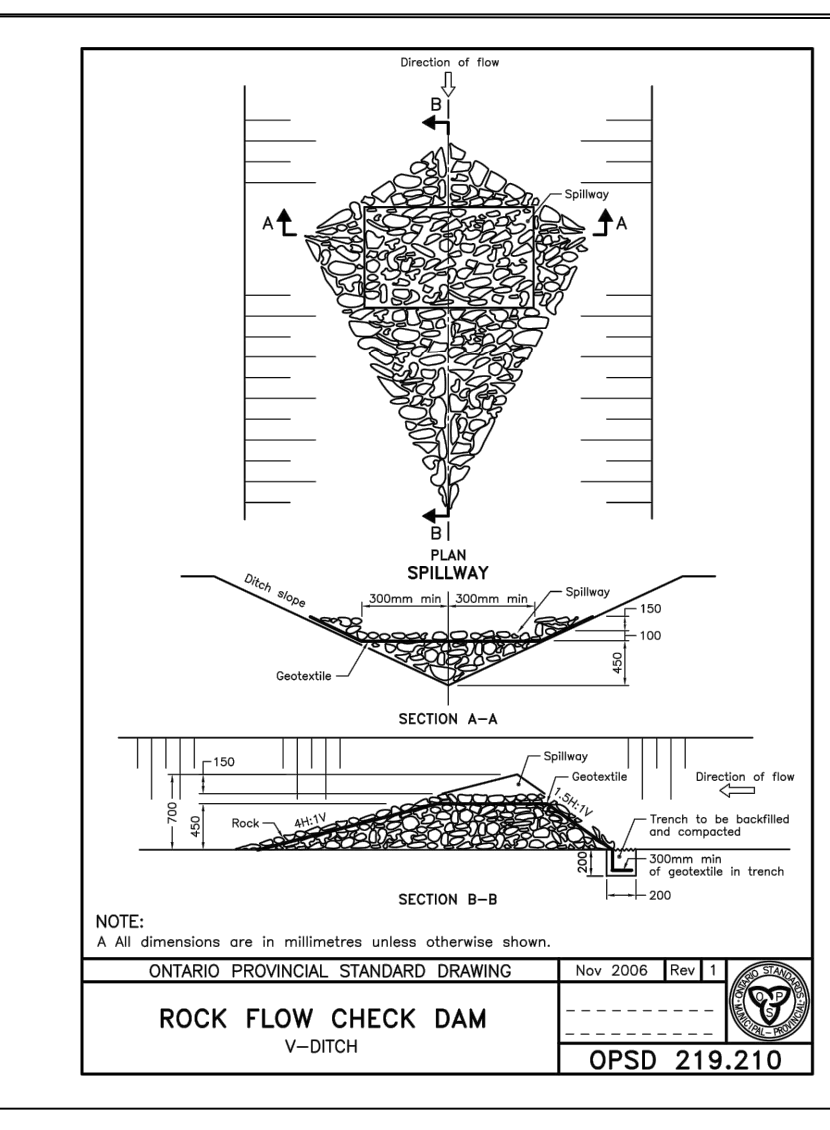
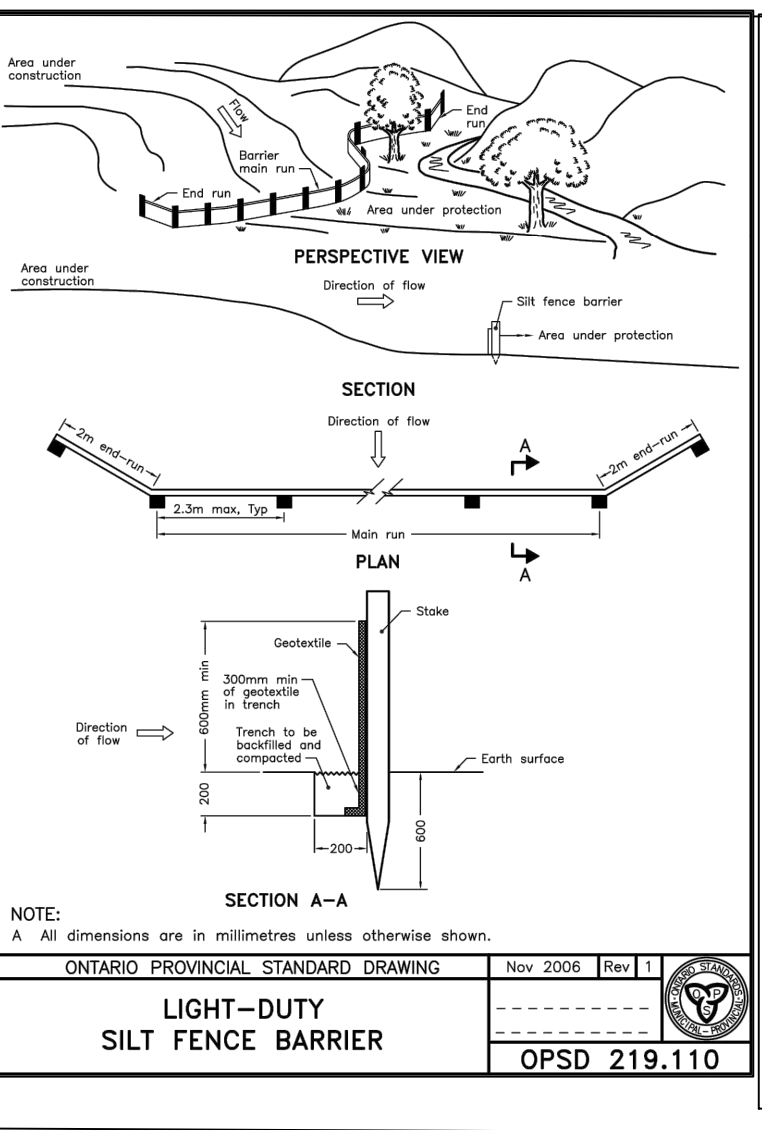
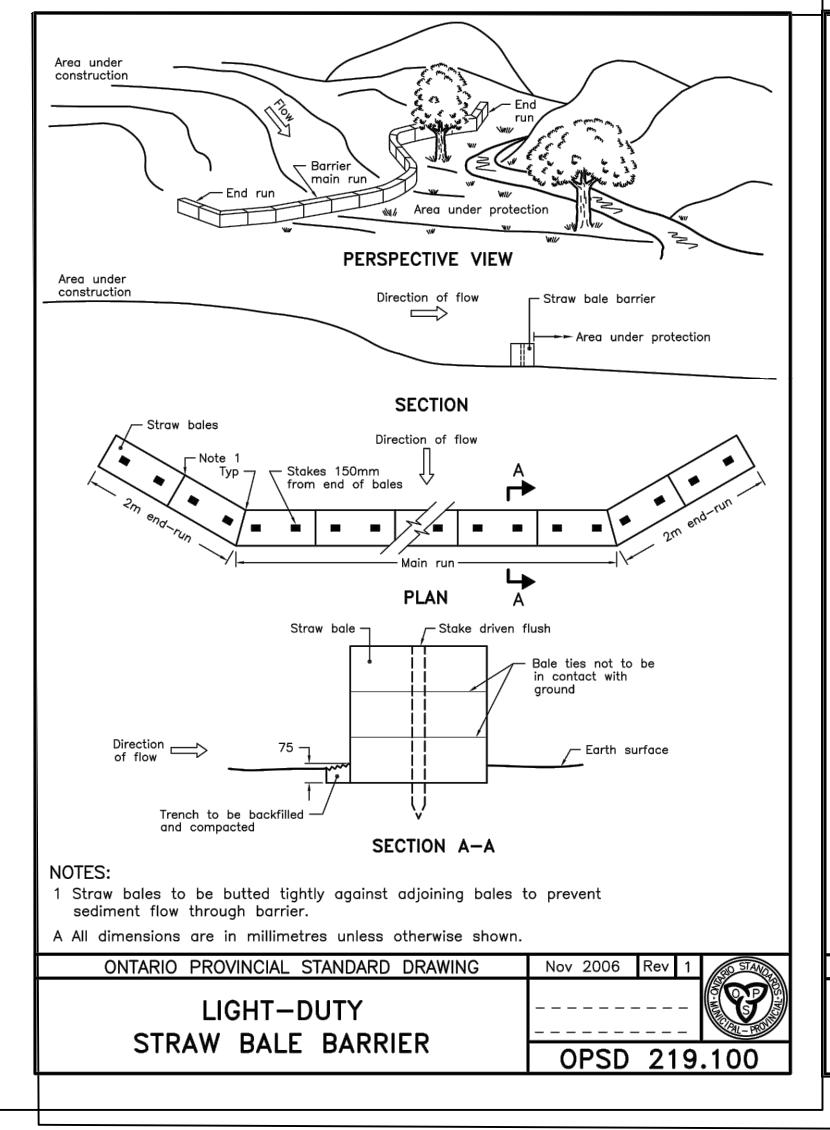
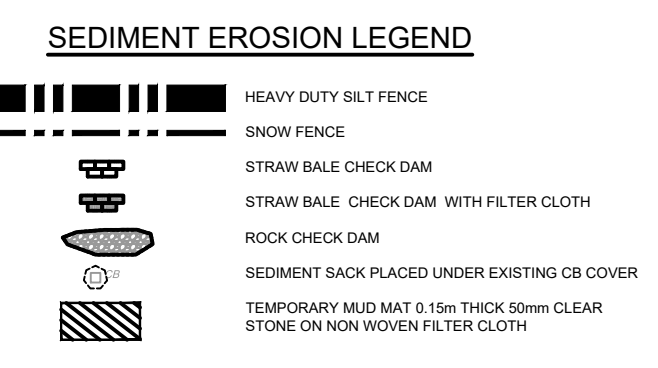
SHEET TITLE
SEDIMENT AND EROSION CONTROL PLAN

SHEET NUMBER
900

ISSUE
1

NOTES:

- SILT FENCE TO BE ERECTED PRIOR TO EARTH WORKS BEING COMMENCED. SILT FENCE TO BE MAINTAINED UNTIL VEGETATION IS ESTABLISHED OR UNTIL START OF SUBSEQUENT PHASE.
- STRAW BALE SEDIMENT TRAPS TO BE CONSTRUCTED IN EXISTING ROAD SIDE DITCHES. TRAPS TO REMAIN AND BE MAINTAINED UNTIL VEGETATION IS ESTABLISHED.
- SILT SACK TO BE PLACED AND MAINTAINED UNDER COVER OF ALL CATCHBASINS. GEOTEXTILE SILT SACK IN STREET C&B TO REMAIN UNTIL ALL CURBS ARE CONSTRUCTED. GEOTEXTILE FABRIC IN RYCBs TO REMAIN UNTIL VEGETATION IS ESTABLISHED. ALL CATCHBASINS TO BE REGULARLY INSPECTED AND CLEANED, AS NECESSARY, UNTIL SOD AND CURBS ARE CONSTRUCTED.
- CONTRACTOR TO PROVIDE DETAILS ON LOCATION(S) AND DESIGN OF DEWATERING TRAP(S) PRIOR TO COMMENCING WORK. CONTRACTOR ALSO RESPONSIBLE FOR MAINTAINING TRAP(S) AND ADJUSTING SIZE(S) IF DEEMED REQUIRED BY THE ENGINEER DURING CONSTRUCTION.
- CONTRACTOR TO PROTECT EXISTING CATCHBASINS WITH FILTER CLOTH UNDER THE COVERS TO TRAP SEDIMENTATION. REFER TO IDENTIFIED STRUCTURES.
- IF DEEMED NECESSARY BY CITY INSPECTOR, LOCATION OF MUD MATS TO BE DETERMINED IN THE FIELD.
- CONTRACTOR IS RESPONSIBLE FOR THE INSTALLATION, INSPECTION, MAINTENANCE AND REMOVAL OF ALL CONTROL MEASURES.
- THIS PLAN IS A "LIVING DOCUMENT" WHICH MAY BE REVISED IN THE EVENT THE CONTROL MEASURES ARE INSUFFICIENT.



CITY FILE No. D07-1135925-Barrett.indd7.0_Production7.03_Design\04_Civil\Sheet\900 SEDIMENT AND EROSION CONTROL PLAN.dwg Last Saved: May 5, 2022, by rmmhse Printed: Tuesday, May 10, 2022 11:30:37 AM by Marian Milne