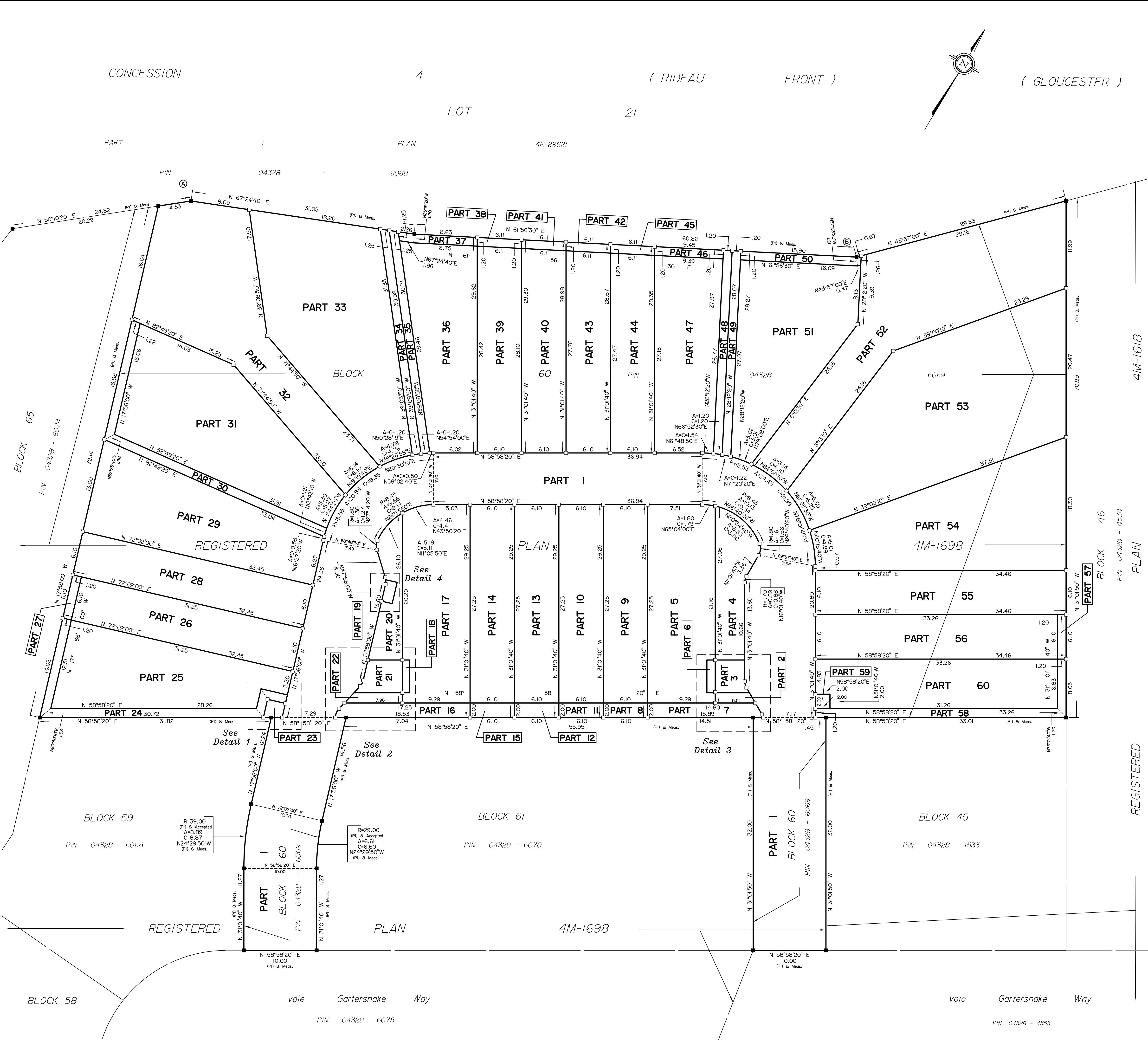
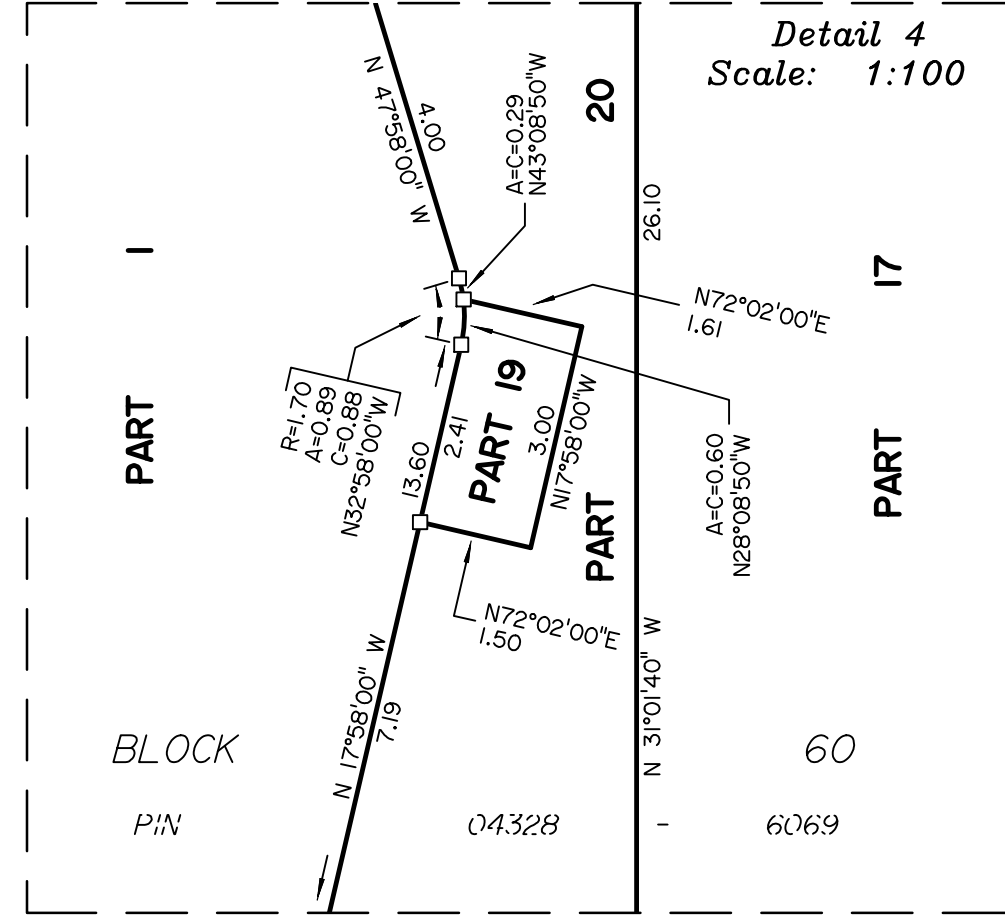
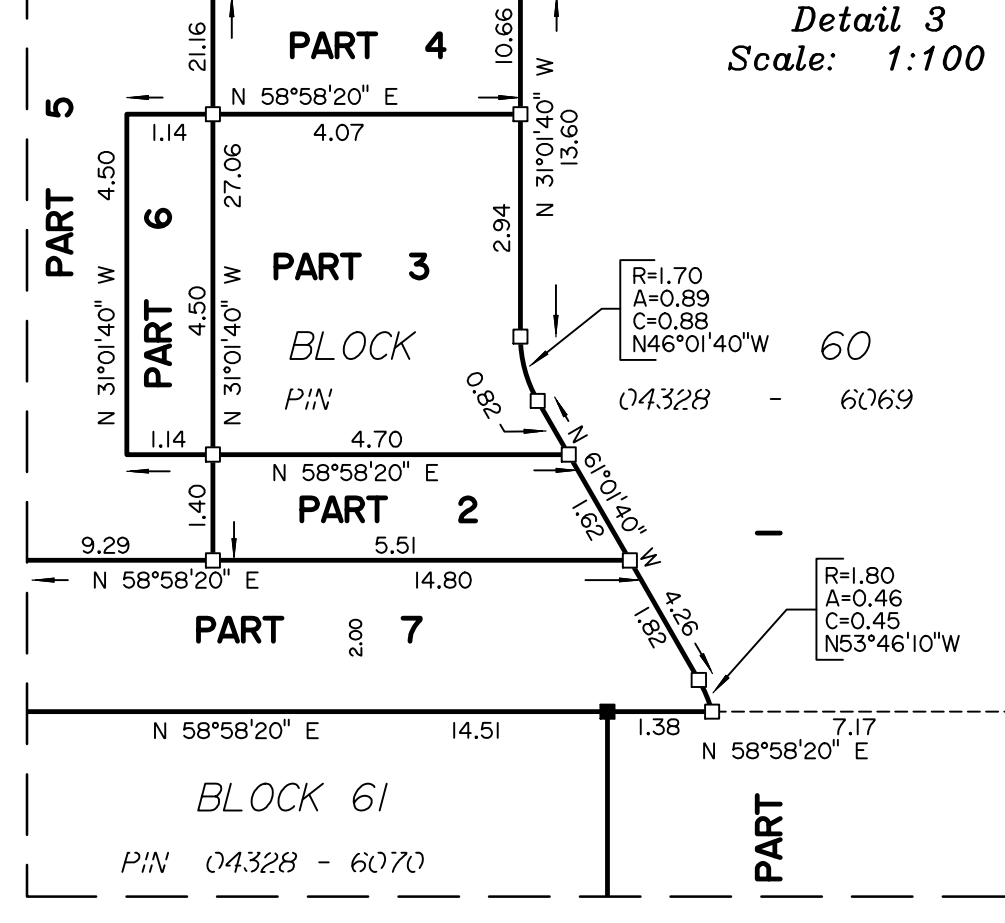
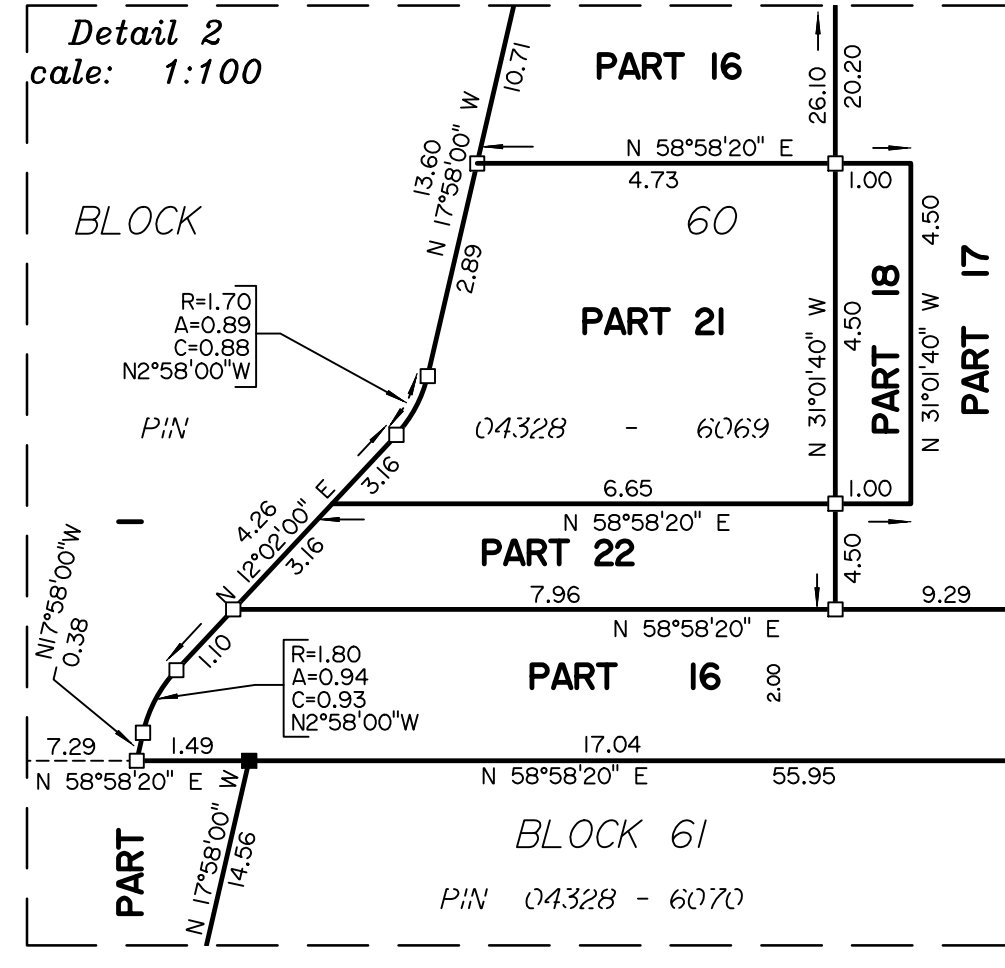
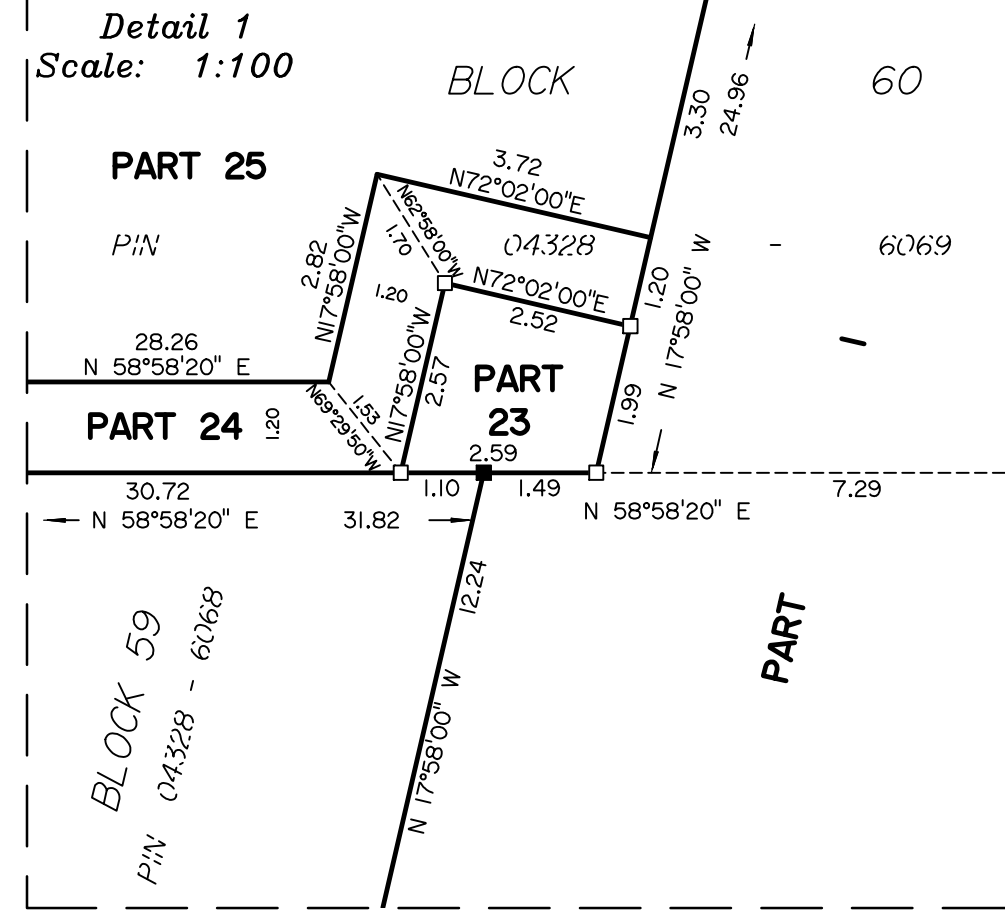


REVISION SCHEDULE			
NO.	REVISION	DATE	BY
5	REVISED TRANSFORMER PARTS	DEC. 7, 2022	N
4	???	???	??
3	REVISIONS	JUNE 21, 2022	N
2	chk plan	May. 12, 2022	FP
1	PLAN PREPARED	APR. 21, 2022	N



I REQUIRE THIS PLAN TO BE DEPOSITED UNDER THE LAND TITLES ACT.
DATE: _____

PLAN 4R-
RECEIVED AND DEPOSITED
DATE: _____

T. HARTWICK
ONTARIO LAND SURVEYOR

REPRESENTATIVE FOR THE
LAND REGISTRAR FOR THE
LAND TITLES DIVISION OF
OTTAWA-CARLETON NO. 4.

SCHEDULE			
PART	BLOCK	PLAN	PIN
1-60 (INCLUSIVE)	ALL OF 60	4M-1698	ALL OF 04328-6069

**PLAN OF SURVEY OF
BLOCK 60
REGISTERED PLAN 4M-1698
CITY OF OTTAWA**
Surveyed by Annis, O'Sullivan, Vollebek Ltd.
Scale 1 : 250

Metric
DISTANCES AND COORDINATES SHOWN ON THIS PLAN ARE IN METRES AND CAN BE CONVERTED TO FEET BY DIVIDING BY 0.3048.

Surveyor's Certificate
I CERTIFY THAT:
1. This survey and plan are correct and in accordance with the Surveys Act, the Surveyors Act and the Land Titles Act and the regulations made under them.
2. The survey was completed on the ___ day of _____, 2022.

Date: _____
T. Hartwick
Ontario Land Surveyor

This plan relates to AOLS Plan Submission form number: V-40678

Notes & Legend

□	Denotes	Survey Monument Planted
■	Denotes	Survey Monument Found
SIB	Standard Iron Bar	
SSIB	Short Standard Iron Bar	
IB	Iron Bar	
(WIT)	Witness	
(AOG)	Annis, O'Sullivan, Vollebek Ltd.	
Meas.	Measured	
(P1)	Registered Plan 4M-1698	

Distances shown on this plan are ground distances and can be converted to grid distances by multiplying by the combined scale factor of 0.99996.

Bearings are grid, derived from Can-Net 2016 Real Time Network GPS observations on reference points A and B, shown hereon, having a bearing of N63°47'24"E and are referenced to Specified Control Points 01919760735 and 01919871649, MTM Zone 9 (76°30' West Longitude) NAD-83 (original).

Coordinates are derived from Can-Net 2016 Real Time Network GPS observations referenced to Specified Control Points 01919760735 and 01919871649, MTM Zone 9 (76°30' West Longitude) NAD-83 (original).

Coordinate values are to urban accuracy in accordance with O. Reg. 216/10.

.01919760735	Northing	5026903.34	Easting	376968.72
.01919871649	Northing	5007189.87	Easting	372435.05
.Point A	Northing	5018784.39	Easting	375096.98
.Point B	Northing	5018824.93	Easting	375179.33

Caution: Coordinates cannot, in themselves, be used to re-establish corners or boundaries shown on this plan.