

SKETCH TO ILLUSTRATE

**LOT 37,
PART OF LOTS 36 And 38
(South Nepean Street)
And
LOTS 37, 38 And
PART OF LOT 39
(North Lisgar Street)
REGISTERED PLAN 2996
CITY OF OTTAWA**

Prepared by Annis, O'Sullivan, Vollebek Ltd.
Field Work Completed April 19, 2011



Metric dimensions shown on this plan in metres and can be converted to feet by dividing by 0.3048

April 21/2011
Edward M. Lincowski
Ontario Land Surveyor

Notes & Legend

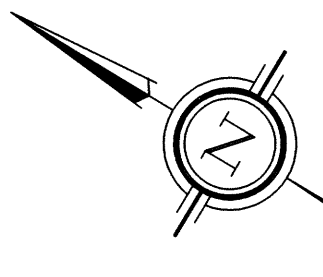
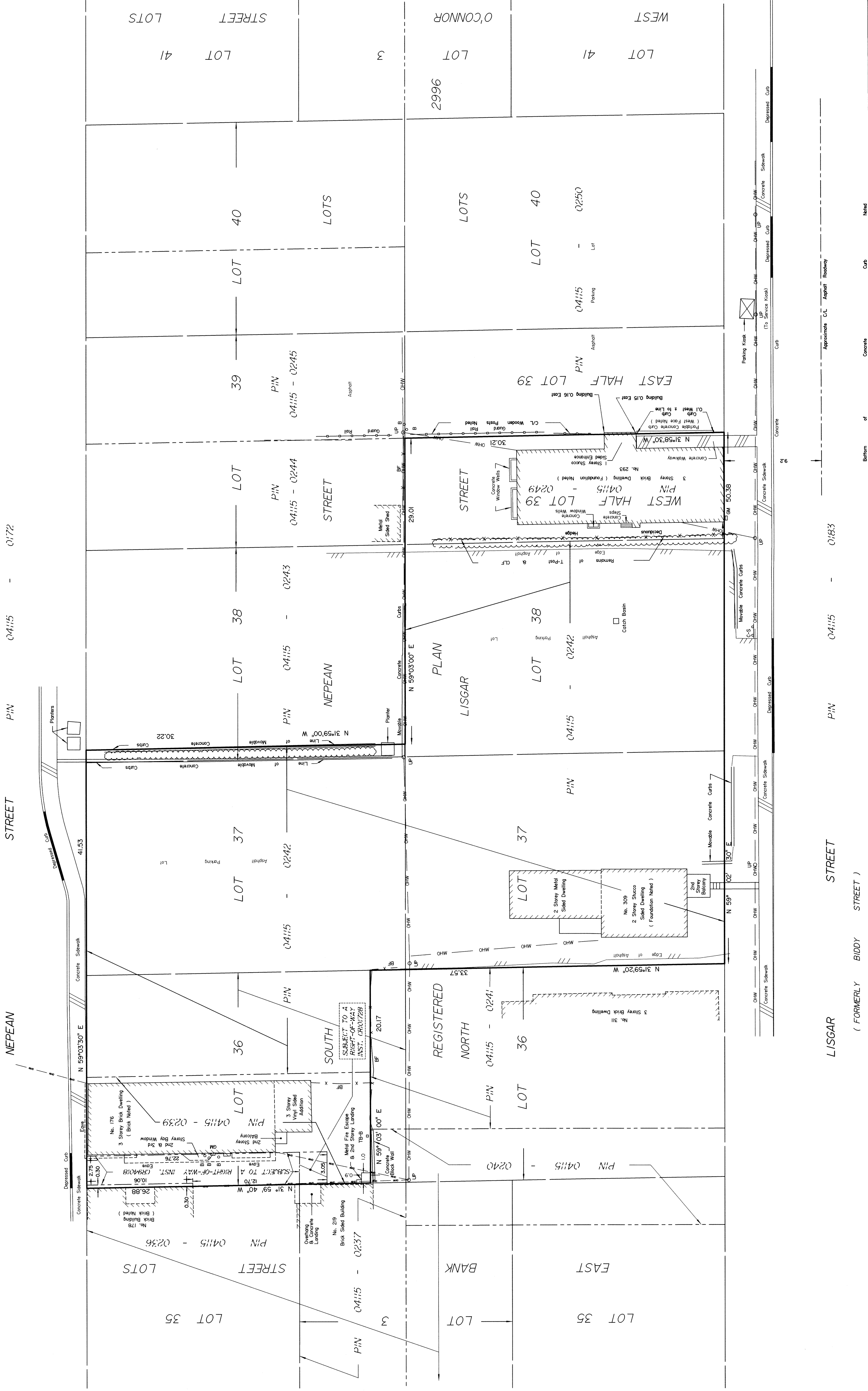
- Gas Meter
- Bell Terminal Box
- Bollard
- Commercial Sign
- Board Fence
- Centreline
- Utility Pole
- Anchor
- Overhead Wires
- Property Line

SEE INST. CR94018 FOR RIGHT-OF-WAY LIMITATIONS.

SITE AREA = 2710.0 m²

BOUNDARY INFORMATION COMPILED FROM REGISTRY
OFFICE RECORDS, OFFICE RECORDS AND FIELD SURVEY.

© Annis, O'Sullivan, Vollebek Ltd. 2011. THIS PLAN IS PROTECTED BY COPYRIGHT.
ANNIS, O'SULLIVAN, VOLLEBEK LTD.
14 Oronoque Avenue, Suite 100
Ottawa, Ontario, Canada K2E 7S8
Phone: (613) 727-0650 / Fax: (613) 727-1079
Email: info@annis-osullivan.com



(FORMERLY BIDDY STREET)