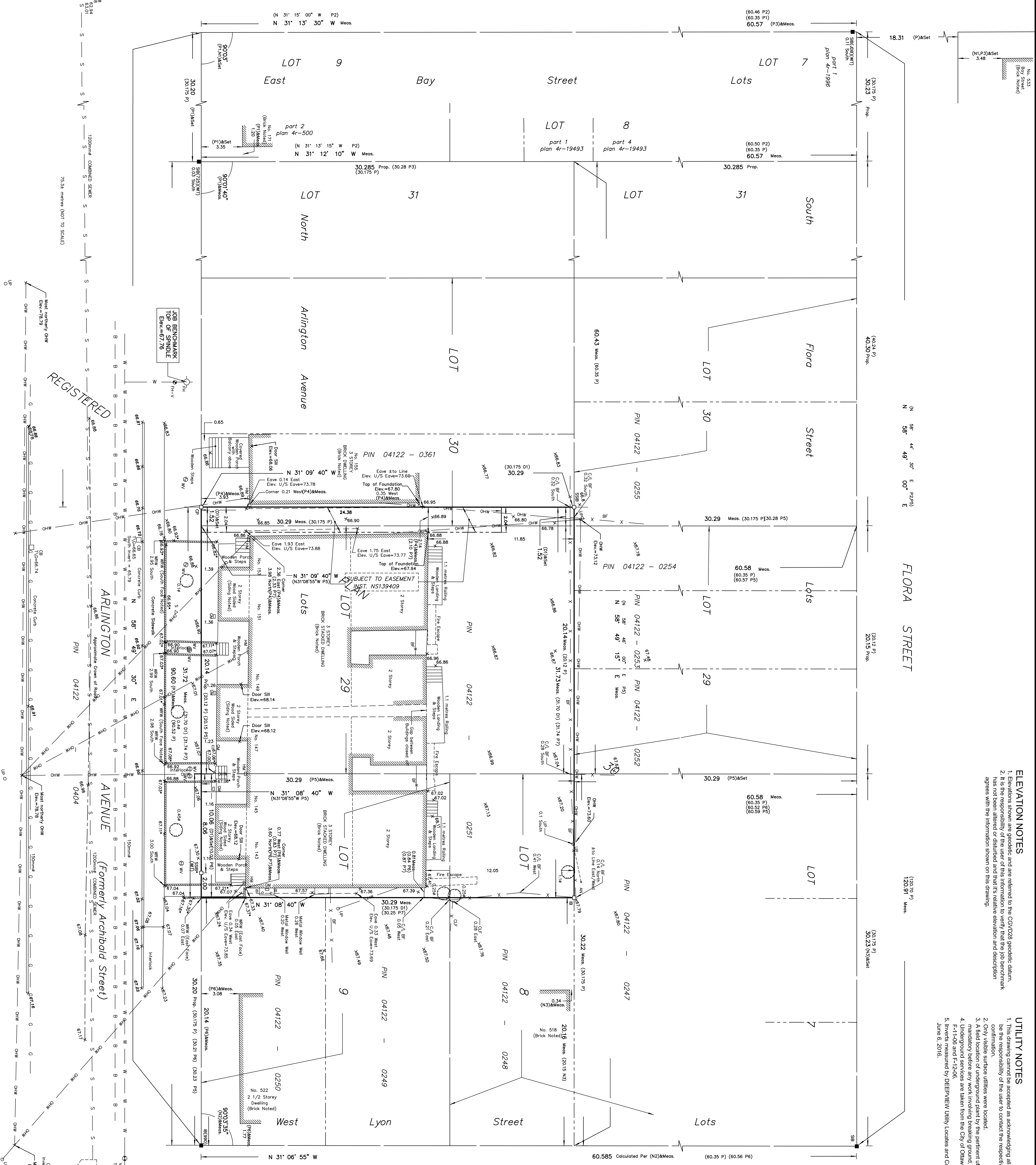
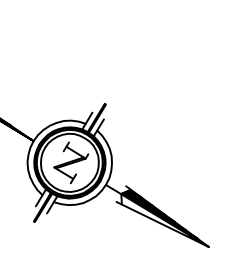


BAY STREET
(Formerly Ashburnham Street)



ELEVATION NOTES

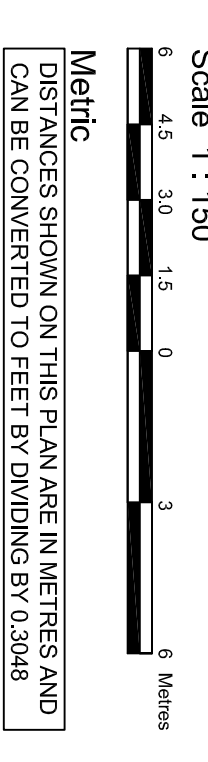
1. Elevations shown are geoidic and are referred to the CGVD28 geoidic datum.
2. It is the responsibility of the user of this information to verify that the job benchmark has not been altered or disturbed and that it's relative elevation and description agrees with the information shown on this drawing.

UTILITY NOTES

1. This drawing cannot be accepted as acknowledging all of the utilities and it will be the responsibility of the user to contact the respective utility authorities for confirmation.
2. Only visible surface utilities were located.
3. A field location of underground part by the pertinent utility authority is required.
4. Underlying structures are shown from the City of Ottawa Engineering Drawings F-1-06 and F-1-2-06.
5. Levels measured by DEEVIEW Utility Locates and Concrete Stamping on June 5, 2016.

TOPOGRAPHICAL PLAN OF SURVEY OF LOT 29 and PART OF LOT 30 (North Arlington Avenue) PART OF LOTS 8 and 9 (West Lyon Street) REGISTERED PLAN 30 CITY OF OTTAWA

Surveyed by Annis, O'Sullivan, Vollebæk Ltd.
Amended June 7, 2016



Surveyor's Certificate

I CERTIFY THAT:

1. This survey and plan are correct and in accordance with the Survey Act, the Surveyors Act and the Land Titles Act and the regulations made under them.
2. The survey was completed on the 18th day of February, 2016.

Date: _____
Andrew J. Broxham
Ontario Land Surveyor

Notes & Legend

- Demolish
- Survey Monument Painted
- Survey Monument Found
- Standard Iron Bar
- Short Standard Iron Bar
- Iron Bar
- Concrete Pin
- Survey Monument 0.3 metres Long
- Witness
- Measured
- Proportioned
- (AOC) Annis, O'Sullivan, Vollebæk Ltd.
- (P) Registered Plan 30
- (P1) Plan 48-000
- (P2) Plan 48-19493
- (P3) (857) Plan & Field Notes November 29, 1978
- (P4) (725) Plan August 27, 1980
- (P5) (1287) Plan February 8, 1989
- (P6) (647) Plan & Field Notes August 9, 1976
- (N1) (720) Field Notes September 28, 1958 (Ref. 58-30)
- (N2) (AOC) Field Notes July 31, 1968 (Ref. 30-10)
- (N3) (AOC) Field Notes June 14, 1968 (Ref. 30-44)
- (D1) Deed Inst. NS139409
- (OH) Fire Hydrant
- (MH) Maintenance Hole (Sanitary)
- (V) Valve Chamber (Watermain)
- (B) Box
- (S) Sign
- (U) Underground Sanitary Sewer
- (W) Underground Water
- (C) Underground Cell
- (G) Underground Gas
- (OW) Overhead Wires
- (M) Manhole
- (H) Hydro Meter
- (A) Anchor
- (CB) Catch Basin
- (C/L) Contingency
- (T/G) Top of Grade
- (CL) Chain Link Fence
- (BR) Board Fence
- (RW) Retaining Wall
- (D) Diaphragm
- (E) Elevation
- (L) Location of Elevations
- (T) Top of Concrete Curb Elevation
- (P) Property Line
- (D) Deciduous Tree
- (U/S) Underside
- (W) Water Valve
- (H-V) Fire Hydrant Valve

Topographic data was collected under Winter Conditions. Snow cover and ice preclude determining location and elevation of some topographical data that is otherwise visible.

Benches are pin and are referred to the Central Meridian of NAD 83 (Original).

SITE AREA = 960.9 m²

ASSOCIATION OF ONTARIO LAND SURVEYORS
1965553

ANNIS, O'SULLIVAN, VOLLEBAEK LTD.
14 Concession Drive, Suite 500
Phon: (613) 759-7259 / 721-4079
Fax: (613) 759-7259

© Annis, O'Sullivan, Vollebæk Ltd. 2016. THIS PLAN IS PROTECTED BY COPYRIGHT.
THIS PLAN AND ALL RIGHTS THEREIN ARE RESERVED.
THIS PLAN IS A PROFESSIONAL DOCUMENT.
REGULATED BY THE PROFESSION OF ENGINEERS AND ARCHITECTS OF ONTARIO.