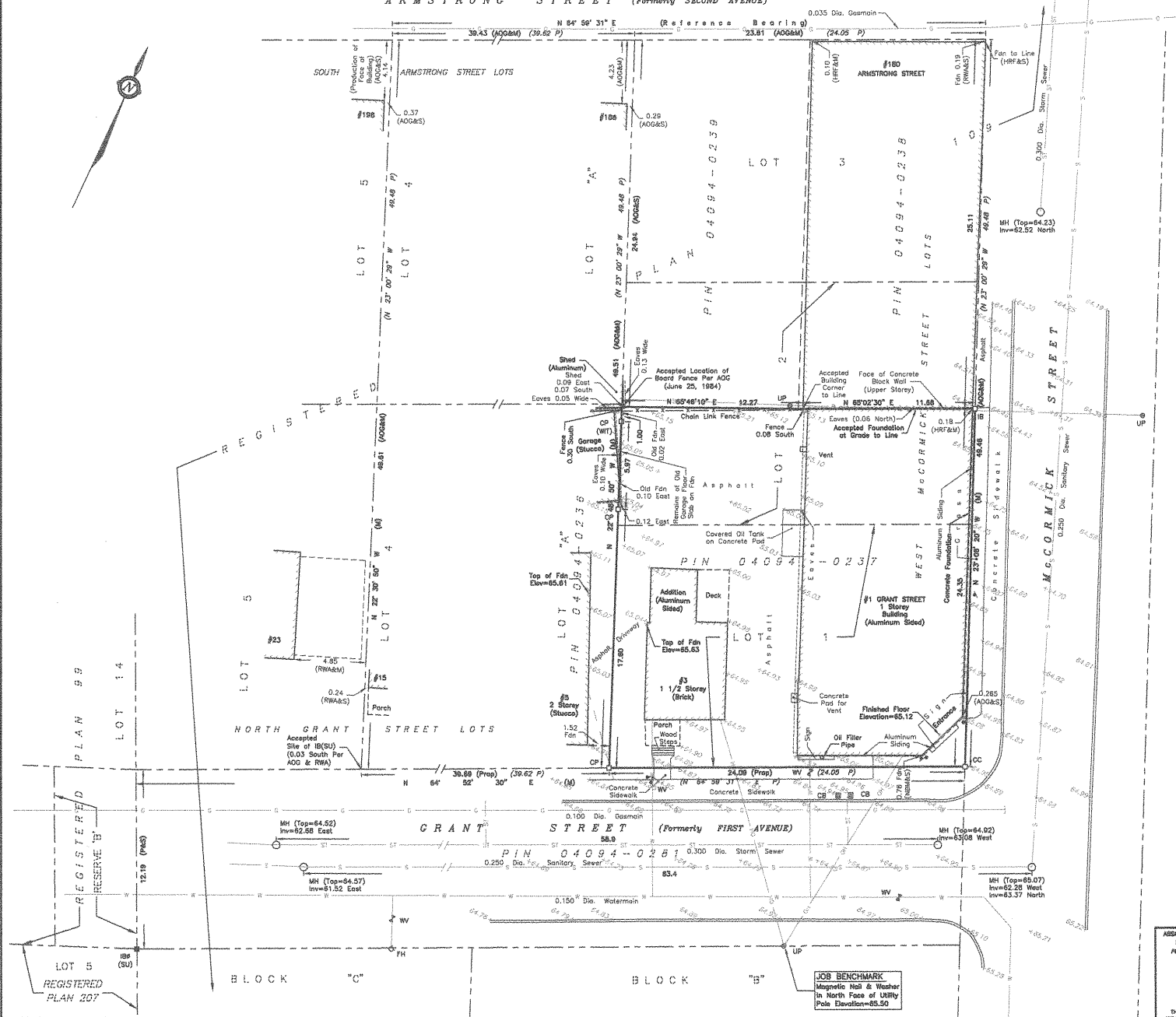


METRIC
DISTANCES AND ELEVATIONS SHOWN ON THIS PLAN ARE IN METRES
AND CAN BE CONVERTED TO FEET BY DIVIDING BY 0.3048

ARMSTRONG STREET (Formerly SECOND AVENUE)



**PLAN OF TOPOGRAPHIC SURVEY OF
LOT 1 and PART OF LOT 2
REGISTERED PLAN 109
CITY OF OTTAWA**

SCALE 1 : 150
0 1 2 5 10 15 metres

FAIRHALL, MOFFATT & WOODLAND LIMITED
ONTARIO LAND SURVEYORS

- ELEVATION NOTES**
- ELEVATIONS SHOWN HEREON ARE REFERRED TO GEODETIC DATA.
 - ELEVATIONS FOR MANHOLE COVERS AND CATCH BASINS HAVE TO BE INDEPENDENTLY CONFIRMED BEFORE THEY CAN BE ACCEPTED FOR FINAL DESIGN OR CONSTRUCTION PURPOSES.
 - IT IS THE RESPONSIBILITY OF THE USER OF THIS INFORMATION TO VERIFY THAT THE JOB BENCHMARK HAS NOT BEEN ALTERED OR DISTURBED AND THAT ITS RELATIVE ELEVATION AND DESCRIPTION AGREE WITH THE INFORMATION SHOWN ON THIS DRAWING.

- UTILITY NOTES**
- THIS DRAWING CANNOT BE ACCEPTED AS ACKNOWLEDGING ALL OF THE UNDERGROUND UTILITIES AND IT WILL BE THE RESPONSIBILITY OF THE USER TO CONTACT THE RESPECTIVE UTILITY AUTHORITIES FOR CONFIRMATION OR LOCATION.
 - UNDERGROUND UTILITIES, AS REPORTED ON THIS DRAWING, ARE NOT BASED ON AN ACTUAL 'FIELD LOCATE' BY THE RESPECTIVE UTILITY AGENCIES BUT HAVE BEEN COMPILED FROM DATA OBTAINED FROM THE FOLLOWING SOURCES:
a) CITY OF OTTAWA PUBLIC UTILITIES REGISTRY
 - BEFORE ANY WORK INVOLVING PROBING, EXCAVATING, ETC., A FIELD LOCATION OF UNDERGROUND PLANT BY THE PERTINENT UTILITY AGENCY IS MANDATORY.

NOTE
BEARINGS HEREON ARE ASTROMONIC AND ARE REFERRED TO THE SOUTHERLY LIMIT OF ARMSTRONG STREET AS SHOWN ON REGISTERED PLAN 109, HAVING A BEARING OF N 84° 56' 31" E.

LEGEND

□	- SURVEY MONUMENT SET	⊙ UP	- UTILITY POLE
⊙	- SURVEY MONUMENT FOUND	⊙	- BOLLARD
⊖	- STANDARD IRON BAR	⊖	- SIGN
⊖	- SHORT STANDARD IRON BAR	⊖	- WATERMAIN
⊖	- IRON BAR	⊖	- OVERHEAD UTILITY WIRES
⊖	- ROUND	⊖	- GAS MAIN
⊖	- CUT CROSS	⊖	- STORM SEWER
⊖	- CONCRETE PIN	⊖	- SANITARY SEWER
(P)	- REGISTERED PLAN 109	⊖	- OVERHEAD HYDRO
(M)	- MEASURED	⊖	- OVERHEAD BELL
(S)	- SET	⊖	- CURB
(PROP)	- PROPORTIONED		
(ADG)	- ANNIS, O'BULLMAN, VOLLEBECK LTD., O.L.S. LOT 5 - MARCH 28, 1984 & LOT 'A' - JAN. 25, 1984		
(HRF)	- H. R. FARLEY, O.L.S. (SURVEY 180 ARMSTRONG STREET DATED JAN. 22, 1982)		
(H&M)	- N. S. MacROSTIE, O.L.S., FEB 09, 1946		
(RWA)	- R. W. ARNETT, O.L.S. (REF. 1-109 & 4-109)		
(WIT)	- WITNESS		
DA	- DIAMETER		
FDN	- FOUNDATION		
INV	- INVERT		
PN	- PROPERTY IDENTIFIER NUMBER		
CB	- CATCH BASIN		
MH	- MANHOLE		
PH	- PIRE HYDRANT		
WV	- WATER VALVE		

SURVEYOR'S CERTIFICATE

- I CERTIFY THAT:
1. THIS SURVEY AND PLAN ARE CORRECT AND IN ACCORDANCE WITH THE SURVEYS ACT, THE SURVEYORS ACT, THE LAND TITLES ACT AND THE REGULATIONS MADE UNDER THEM.
- THE SURVEY WAS COMPLETED ON JULY 11, 2013.

ASSOCIATION OF ONTARIO LAND SURVEYORS PLAN Submission Form 1882361	Aug. 06, 2013 DATE	DAVID W. WOODLAND ONTARIO LAND SURVEYOR
 <small>THIS PLAN IS NOT VALID UNLESS IT IS AN UNCORRECTED ORIGINAL COPY ISSUED BY THE SURVEYOR. IT IS VOID IF REPRODUCED OR ALTERED IN ANY MANNER.</small>	JOB No. 530000	
	F589286, M 5029437 REFERENCE No. 7 - 109	S:\WORK\300000000\2013-08-08\TP3005.DWG (nj)

© COPYRIGHT 2013. REPRODUCTION, ALTERATION OR DISTRIBUTION OF THIS PLAN WITHOUT THE WRITTEN CONSENT OF FAIRHALL, MOFFATT & WOODLAND LIMITED IS PROHIBITED.