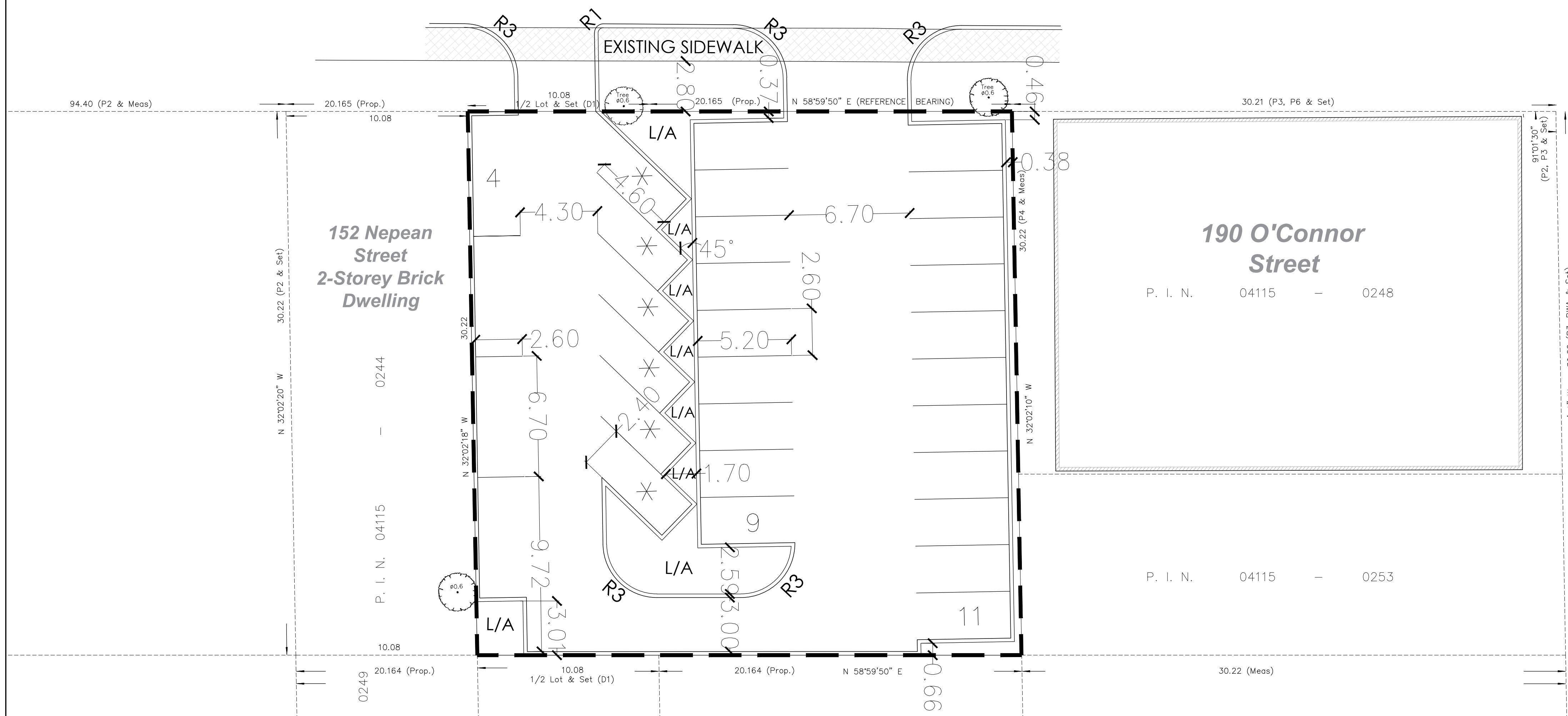


P. I. N. 04115 - 0172

NEPEAN STREET

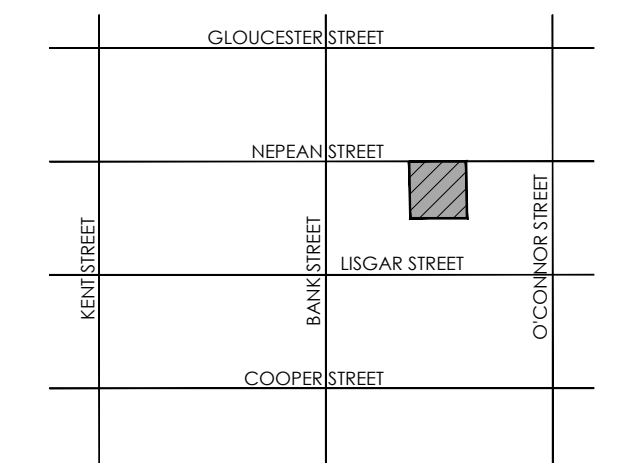


PARKING

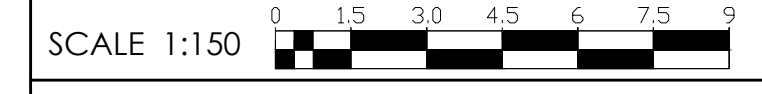
AREA (m²)	
SITE AREA	913.43 m ²
PARKING SPACES	30
ZONING CATEGORY	R5B(482)F(3.0)

SECTION	ZONE PROVISION	REQUIRED	PROPOSED
103(Table)	MINIMUM COMMERCIAL VEHICLE PARKING (1 space/100m ²)	43 spaces	30 spaces*
106(1)	PARKING SPACE SIZE (m)	2.6m x 5.2m	2.6m x 5.2m
106(3)(a)	MIN. REDUCED PARKING SPACE SIZE (m)	2.4m x 4.6m	2.4m x 4.6m
113A(Table)	LOADING SPACE REQUIREMENT (1 space/1000-9999m ²)	1 space	0 spaces*
107	DRIVEWAY WIDTH		
	SINGLE (m)	3m	4.3m
	DOUBLE (m)	6m	6.7m
107(Table)	AISLE WIDTH (m)	6.7m (71-90°)	4.3m*
		4.3m (41-59°)	4.3m
110(Table)	LANDSCAPE BUFFER		
	ABUTTING THE STREET (m)	3m	0m*
	NOT ABUTTING STREET (m)	1.5m	0m*
110	LANDSCAPE AREA (15% of the parking lot area)	137m ²	86m ² (9%)*

* SUBJECT TO ZONING AMENDMENT



KEY MAP
N.T.S.



LEGEND

- L/A LANDSCAPED AREA
- ⊙ EXISTING TREE TO BE RETAINED
- * SMALL CAR SPACE
- BARRIER CURBS (0.2m)

19/05/21	Draft parking plan	EC
DATE	REVISION	BY

GENERAL NOTES
 1. DO NOT SCALE DRAWINGS FOR PRINT.
 2. THIS DRAWING IS THE EXCLUSIVE PROPERTY OF KORSIK URBAN PLANNING AND GLENVIEW HOMES. COPYRIGHT RESERVED.

PROJECT TEAM

SITE PLAN DESIGN: KORSIK Urban Planning	CIVIL ENGINEERING: MAINTOSH PERRY	ENVIRONMENTAL: MCGOUR & ASSOCIATES
PLANNING: FOTENN		

NEPEAN STREET PARKING

142-148 NEPEAN STREET
 PART OF LOTS 39 AND 40
 (SOUTH NEPEAN STREET)
 REGISTERED PLAN 2996
 CITY OF OTTAWA

TITLE:	NEPEAN STREET PARKING	
DATE:	May 19, 2021	DRAWN BY: EC
FILE NO.:		CHECKED BY:
JOB NO.:	GLENVIEW HOMES	
		DRAWING NO. A