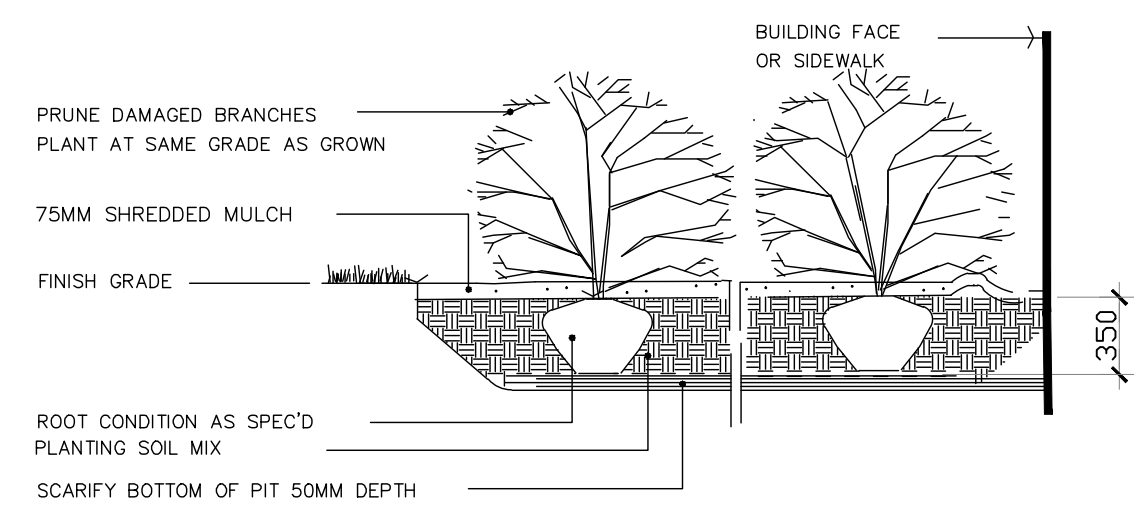
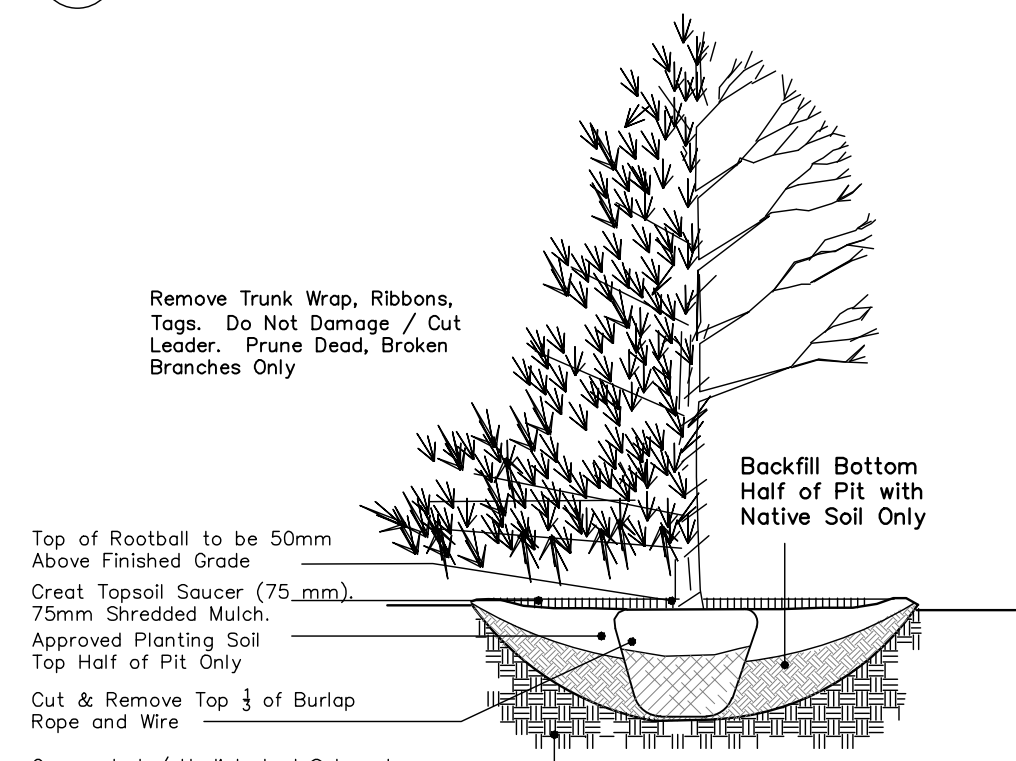


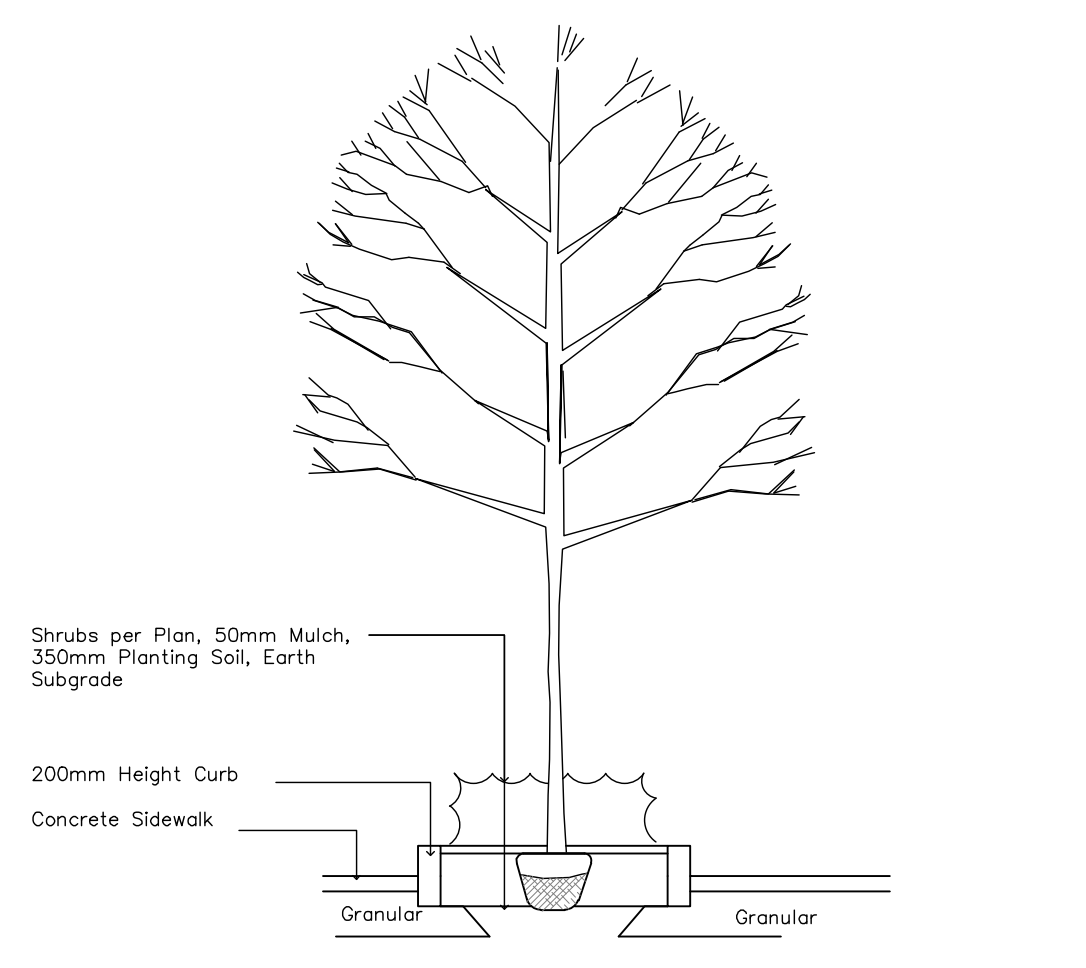
Drawing Remains the Property of Gino J. Aiello Landscape Architect. Copyright Reserved by Gino J. Aiello Landscape Architect. Do Not Use or Reproduce Without Approval of Gino J. Aiello. Do Not Use For Construction Unless Signed By Landscape Architect. Contractor is Responsible for Verification of Site Locations of all Utilities. Report any Discrepancies Between Site and Drawing Immediately to Gino J. Aiello.



1 TYPICAL SHRUB PLANTING NTS



2 TYPICAL TREE PLANTING NTS

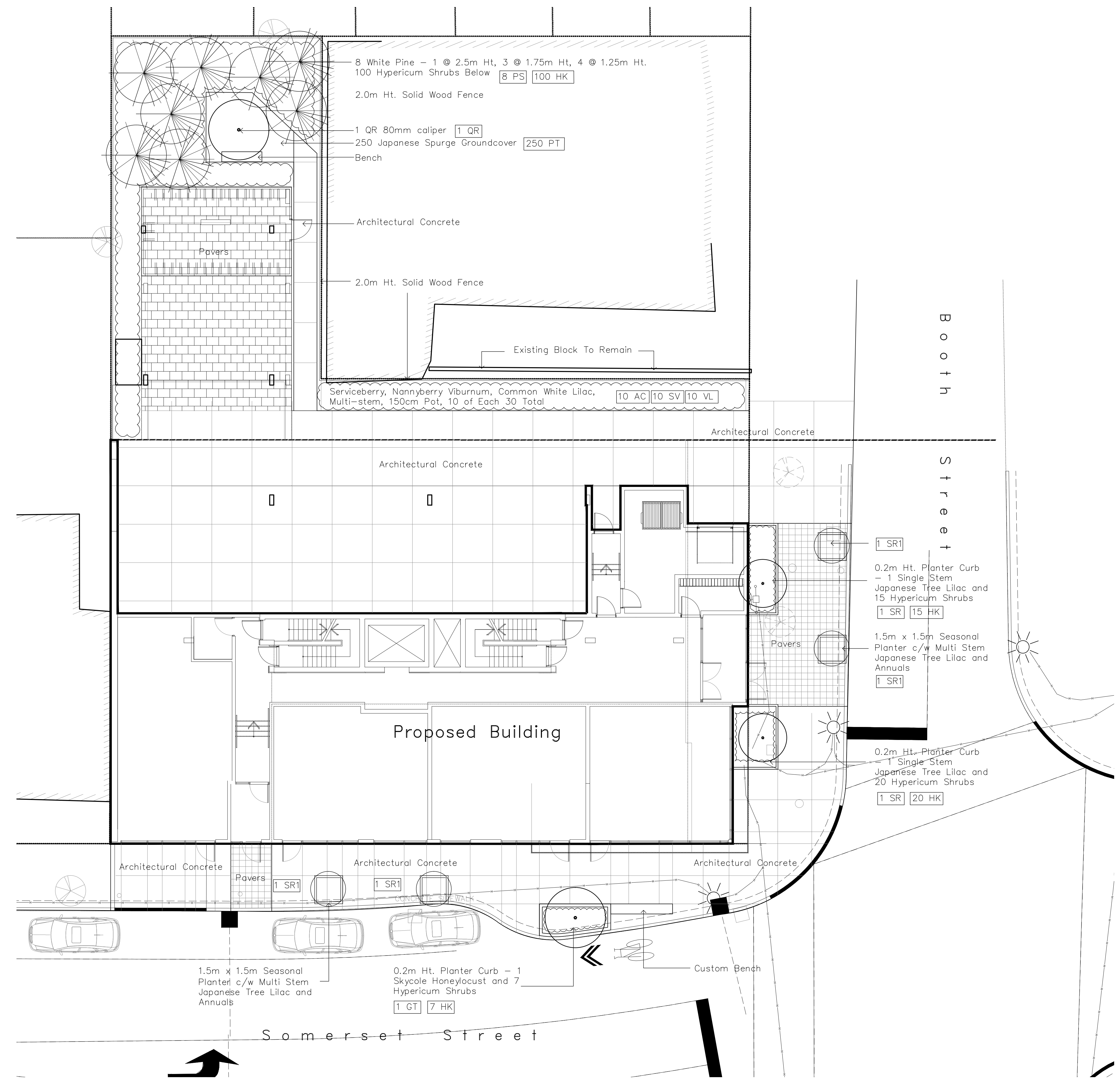


3 TYPICAL TREE PLANTING BOULEVARD NTS

Warranty	Code	Qty.	Botanical Name	Common Name	Size	Cond.
2yr	GT	1	<i>Cedrela triacanthos</i> "Skycote"	Skycote Honeylocust	60mm cal	B + B Specimen
2yr	SR	2	<i>Syringa reticulata</i> "Ivory Silk"	Ivory Silk Tree Lilac	50mm cal	B + B Specimen
2yr	QR	1	<i>Quercus rubra</i>	Red Oak	80 mm cal	B + B Specimen
2yr	PS	1	<i>Pinus strobus</i>	White Pine	2.5m ht.	B & B
2yr	PS	3	<i>Pinus strobus</i>	White Pine	1.75m ht.	B & B
2yr	PS	4	<i>Pinus strobus</i>	White Pine	1.25m ht.	B & B

Code	Qty.	Botanical Name	Common Name	Size	Cond.
AC	10	<i>Amelanchier canadensis</i>	Serviceberry	120cm ht.	Pot
HK	142	<i>Hypericum kalmianum</i>	St. John's Wort	40cm ht.	Pot
SR1	4	<i>Syringa reticulata</i> Ivory Silk	Ivory Silk Lilac	150cm ht	Pot
SV	10	<i>Syringa vulgaris</i> ALBA	White Common Lilac	120cm ht	Pot
VL	10	<i>Viburnum lentago</i>	Nannyberry	120cm ht.	Pot

Code	Qty.	Botanical Name	Common Name	Size	Cond.
PT	250	<i>Pachysandra terminalis</i>	Japanese Spurge	9cm Pot	



No.	Revision	Date
4	For Site Plan Control	August 24 2011
3	For Coordination	August 12 2011
2	FOR REVIEW	August 8 2011
1	FOR REVIEW	July 19 2011

Owner

Consultant
Gino J. Aiello landscape architect www.gjala.com
 gino@gjala.com (613) 852 1343
 50 Camelot Drive, Nepean, Ontario K2G 5X8

Project
Somerset at Booth
 288 Booth Street, OTTAWA

Drawing
Landscape Plan

Drawn By: GJA Sheet Number
 Design By: GJA
 Date: June 2011
 Scale: 1:100

L1