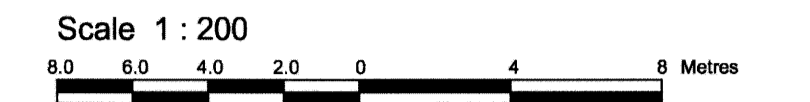
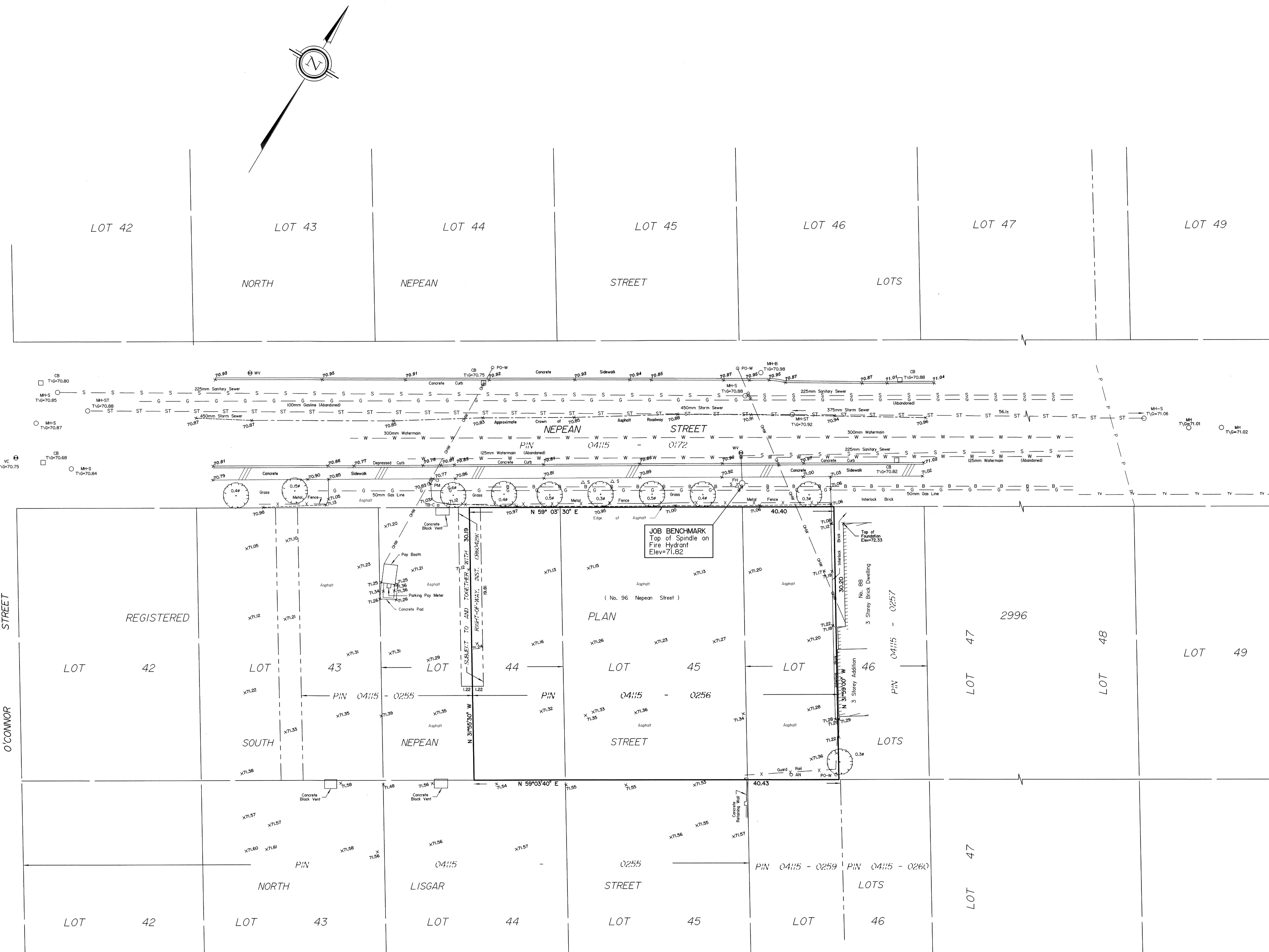


**TOPOGRAPHICAL PLAN OF
LOT 45 And
PART OF LOTS 44 And 46
(South Side Nepean Street)
REGISTERED PLAN 2996
CITY OF OTTAWA**
Prepared by Annis, O'Sullivan, Vollebakk Ltd.
Field Work Completed September 6, 2011



Metric
DISTANCES SHOWN ON THIS PLAN ARE IN METRES AND
CAN BE CONVERTED TO FEET BY DIVIDING BY 0.3048

Date: September 8, 2011
Signature: Edward M. Lancaster, O.L.S.



Notes & Legend

Symbol	Denotes	Deciduous Tree
(Circle with cross)	Denotes	Deciduous Tree
(Star)		Coniferous Tree
(Circle with dot)		Fire Hydrant
(Circle with cross)		Water Valve
(Circle with dot)		Maintenance Hole (Sanitary)
(Circle with cross)		Maintenance Hole (Storm Sewer)
(Circle with dot)		Maintenance Hole (Bell Telephone)
(Circle with cross)		Catch Basin
(Circle with dot)		Maintenance Hole (Unidentified)
(Circle with cross)		Valve Chamber (Watermain)
(Circle with dot)		Underground Storm Sewer
(Circle with cross)		Underground Sanitary Sewer
(Circle with dot)		Underground Water
(Circle with cross)		Underground Power
(Circle with dot)		Underground Gas
(Circle with cross)		Underground Bell
(Circle with dot)		Overhead Wires
(Triangle)		Sign
(Square)		Parking Meter
(Circle with cross)		Cable Terminal Box
(Circle with dot)		Wood Pole
(Circle with cross)		Anchor
(Circle with dot)		Diameter
(Circle with cross)		Location of Elevations
(Circle with dot)		Top of Concrete Curb Elevations
(Circle with cross)		Top of Grate
(Circle with dot)		Property Line

Bearings are astronomic, derived from the northerly limit of Nepean Street, shown to be N 59°03'30" E on a plan by (AOS), dated January 31, 2011.

SITE AREA = 1220.0 sqm

BOUNDARY INFORMATION COMPILED FROM FIELD SURVEY, REGISTRY OFFICE SEARCH AND OFFICE RECORDS.

ELEVATION NOTES
1. Elevations shown are referred to geodetic datum.
2. It is the responsibility of the user of this information to verify that the job benchmark has not been altered or disturbed and that it's relative elevation and description agrees with the information shown on this drawing.

UTILITY NOTES
1. This drawing cannot be accepted as acknowledging all of the utilities and it will be the responsibility of the user to contact the respective utility authorities for confirmation.
2. Only visible surface utilities were located.
3. Underground utility services shown on this plan are derived from City of Ottawa Department of Public Works and Services Branch utility drawings, reference E-12-04 and E-12-05.
4. A field location of underground plant by the pertinent utility authority is mandatory before any work involving breaking ground, probing, excavating etc.