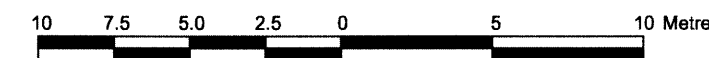


TOPOGRAPHICAL PLAN OF

LOTS 1,2,3 and 4
WEST SIDE
BREEZEHILL AVENUE NORTH
BLOCK J
REGISTERED PLAN 73
CITY OF OTTAWA

Prepared by Annis, O'Sullivan, Vollebakk Ltd.
Field Work Completed on April 19, 2011

Scale 1 : 250



Metric

DISTANCES SHOWN ON THIS PLAN ARE IN METRES AND CAN BE CONVERTED TO FEET BY DIVIDING BY 0.3048

Notes & Legend

Denotes	
+ 65.00	Location of Elevations
+ 65.00	Location of Bottom of Curb Elevations
○ MH-ST	Maintenance Hole (Storm Sewer)
○ MH-S	Maintenance Hole (Sanitary)
○ MH-B	Maintenance Hole (Bell)
○ UP	Utility Pole
□ CB	Catch Basin
○ FH	Fire Hydrant
CLF	Chain Link Fence
T/G	Top of Grate
— ST —	Underground Storm Sewer
— S —	Underground Sanitary Sewer
— W —	Underground Water
— P —	Underground Power
— B —	Underground Bell
—	Property Line

SITE AREA = 2416 m²

BOUNDARY INFORMATION COMPILED FROM OFFICE RECORDS,
REGISTRY SEARCH AND FIELD SURVEY

ELEVATION NOTES

- Elevations shown are referred to geodetic datum.
- It is the responsibility of the user of this information to verify that the job benchmark has not been altered or disturbed and that its relative elevation and description agrees with the information shown on this drawing.

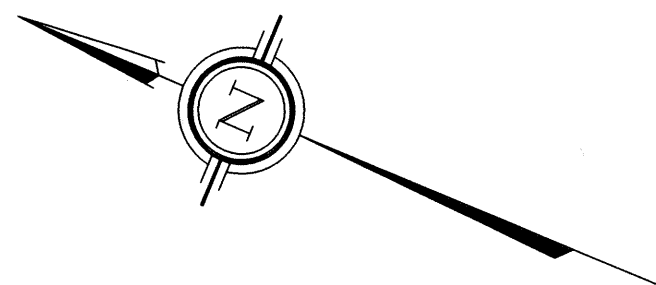
UTILITY NOTES

- This drawing cannot be accepted as acknowledging all of the utilities and it will be the responsibility of the user to contact the respective utility authorities for confirmation.
- Only visible surface utilities were located.
- A field location of underground plant by the pertinent utility authority is mandatory before any work involving breaking ground, probing, excavating etc.

© Annis, O'Sullivan, Vollebakk Ltd, 2011. "THIS PLAN IS PROTECTED BY COPYRIGHT"

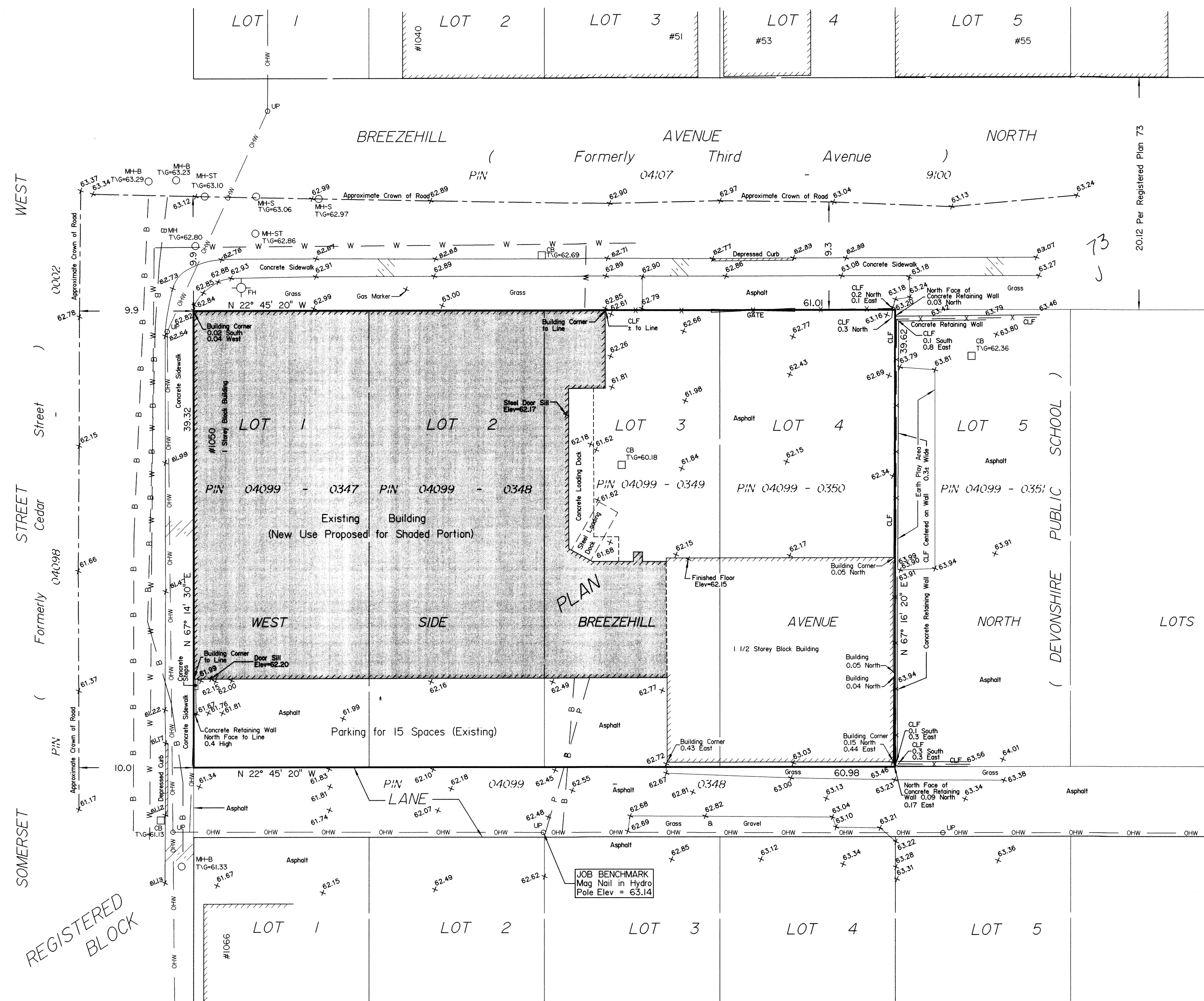
ANNIS, O'SULLIVAN, VOLLEBEKK LTD.
14 Concourse Gate, Suite 500
Nepean, Ont. K2E 7S6
Phone: (613) 727-0850 / Fax: (613) 727-1079
Email: Nepean@avvlltd.com

Ontario
Land Surveyors



1050 Somerset Street West Current Zoning: TM(126)H(15)
Current Parking #15 spaces (off Lane)

ADD: Light Industrial Use as a permitted use to the portion of the existing building that is high-lighted.



REGISTERED BLOCK