

1. Copyright of this drawing is reserved by the Architect. The drawing is to be used only for the project and site for which it was prepared. It may not be reproduced in whole or in part without prior written permission of the Architect.

2. These Contract Documents are the property of the Architect. The Architect bears no responsibility for the interpretation of these documents. The Architect will provide clarifications, identification or supplementary information regarding the intent of the Contract Documents. The Architect will review Shop Drawings submitted by the Contractor for design coordination only.

3. Drawings are not to be scaled for construction. The Contractor is to work and report and discrepancies with the Contract Documents to the Architect before commencing any work.

4. Positions of exposed finishes for mechanical or electrical devices, fittings and fixtures are indicated on architectural drawings. The location shown on the architectural drawing governs over the mechanical and electrical drawings. Shop drawings of such devices will be scaled as indicated by the Architect.

5. These drawings are not to be used for construction unless noted below as "Issued for Construction".

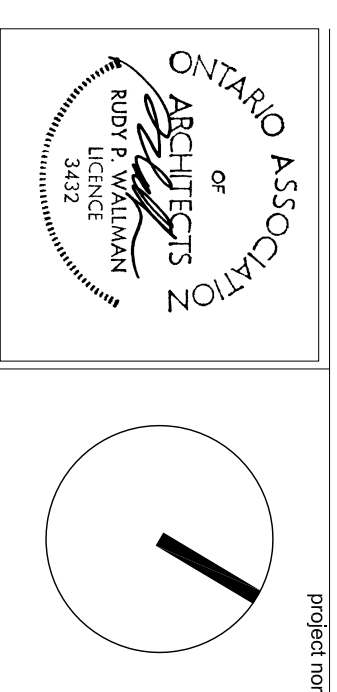
6. All work is to be carried out in conformance with the Code and Bylaws of the applicable governing jurisdiction.

7. The Architect of these plans and specifications gives no warranty or representation as to the accuracy of the information provided by others, or representatives when bidding and it all times ensure that they can properly construct the work represented by these plans.

No.	Revisions	Date (YYYY/MM/DD)
01	SITE PLAN APPLICATION	2017/07/27
02	PERMIT APPLICATION	2017/08/01
03	SITE PLAN APPLICATION	2018/05/16



**WALLMAN ARCHITECTS**  
 30 Dundas Street, Suite 202  
 Toronto, Ontario M5V 2C3  
 T 416 340 1870  
 F 416 340 1871  
 info@wallmanarchitects.com



488 RICHMOND ROAD  
 OTTAWA, ONTARIO

MINTO COMMUNITIES INC.

2004-181 KENT ST. OTTAWA, ON K1P 0B8

SOUTH ELEVATION

project number: XX-SS

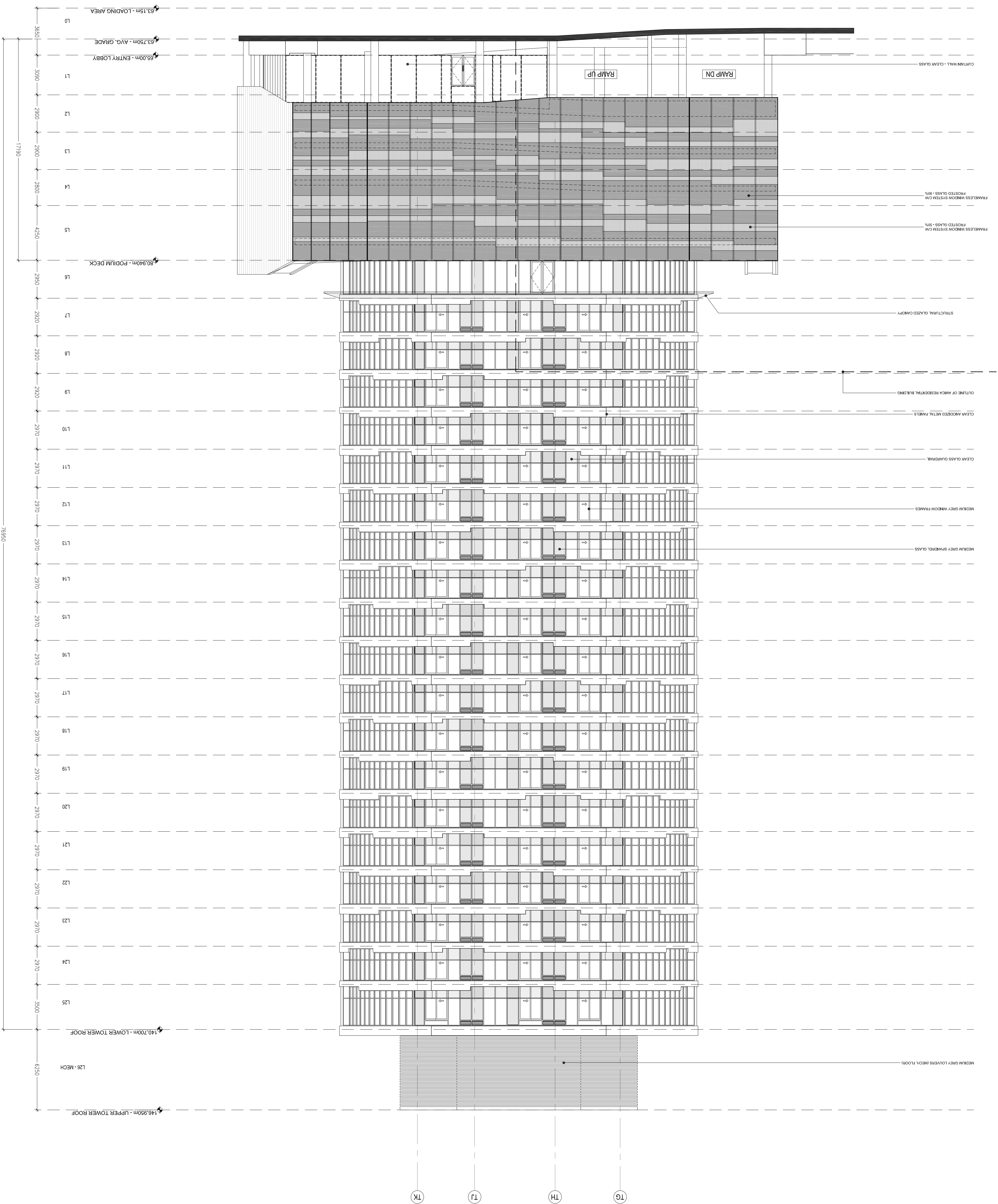
date: 2018.05.16

scale: 1:200 @ ARCH.D

drawn by: [blank]

sheet: [blank]

A3-00



1. Copyright of this drawing is reserved by the Architect. The drawing is to be used only for the project and site for which it was prepared. It may not be reproduced in whole or in part without prior written permission of the Architect.

2. These Contract Documents are the property of the Architect. The Architect bears no responsibility for the interpretation of these documents by the Contractor. The Contractor shall be responsible for providing adequate identification of supplementary information regarding the intent of the Contract Documents. The Architect will review Shop Drawings submitted by the Contractor for design coordination only.

3. Drawings are not to be scaled for construction. The Contractor is to work and report and discrepancies with the Contract Documents to the Architect before commencing any work.

4. Positions of exposed finishes for mechanical or electrical devices, fittings and fixtures are indicated on architectural drawings. The location shown on the architectural drawing governs over the mechanical and electrical drawings. Shop drawings of such devices shall be scaled as indicated by the Architect.

5. These drawings are not to be used for construction unless noted below as "Issued for Construction".

6. All work is to be carried out in conformance with the Code and Bylaws of the Authority having jurisdiction.

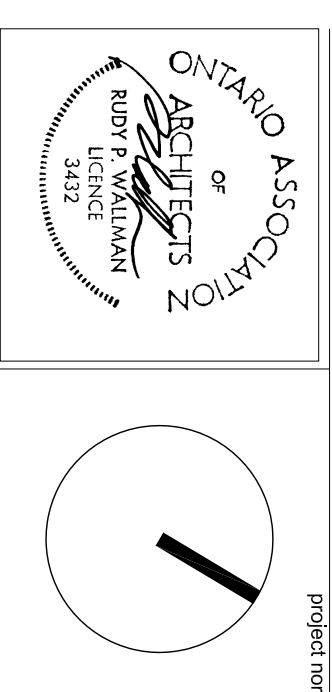
7. The Architect of these plans and specifications gives no warranty or representation as to the accuracy of the information provided. All contractors or subcontractors must satisfy themselves when bidding and at all times ensure that they can properly construct the work represented by these plans.

No.	Revisions	Date (YYYY/MM/DD)
01	SITE PLAN APPLICATION	2017/07/27
02	SITE PLAN APPLICATION	2017/08/24
03	SITE PLAN APPLICATION	2018/05/16



**WALLMAN ARCHITECTS**

30 Dundas Street, Suite 202  
Toronto, Ontario M5V 2C3  
T 416 340 1870  
F 416 340 1871  
info@wallmanarchitects.com



485 RICHMOND ROAD  
OTTAWA, ONTARIO

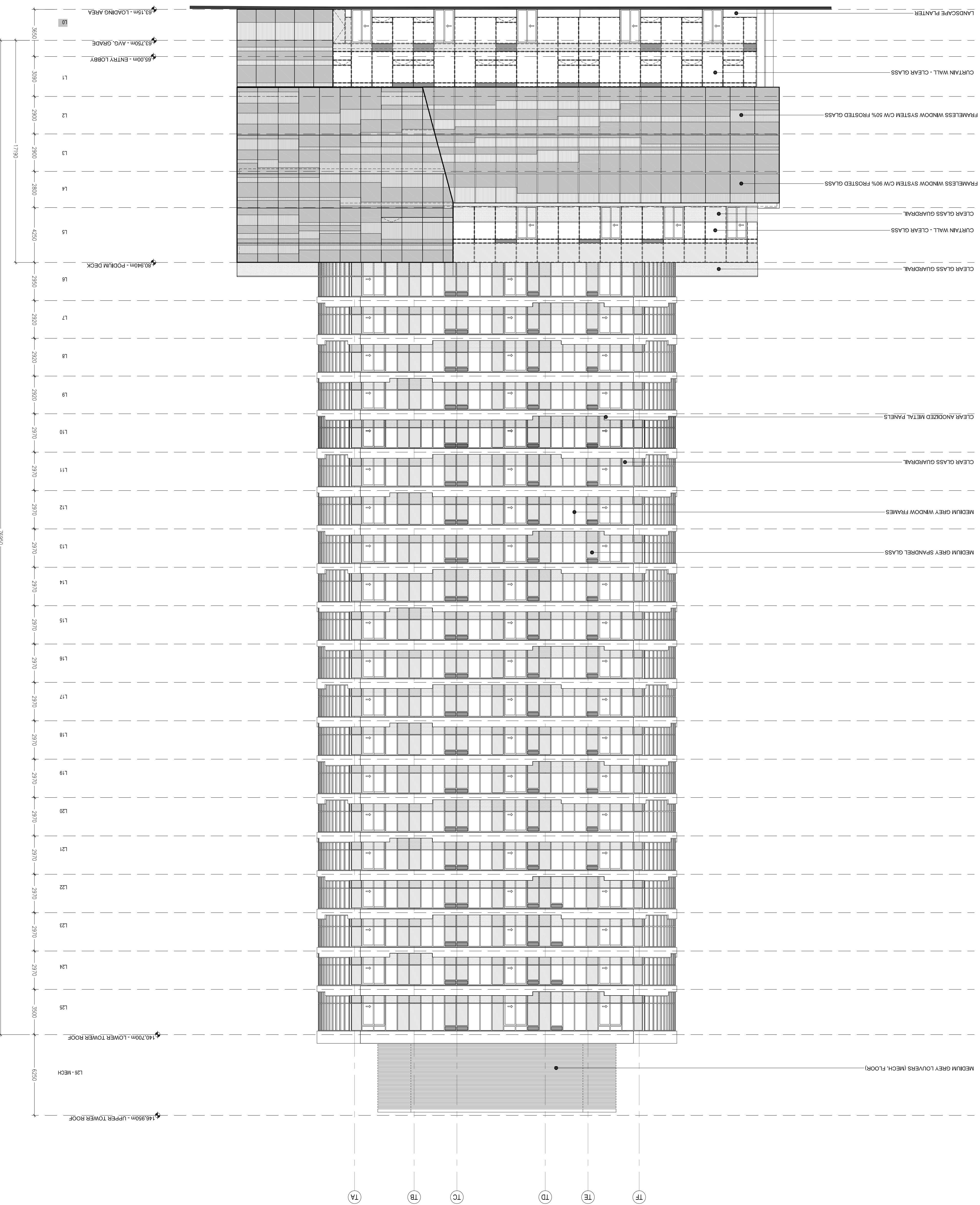
MINTO COMMUNITIES INC.

2004-180 KENT ST. OTTAWA, ON K1P 0B8

**NORTH ELEVATION**

project number	date
XX-SS	2018.05.16
1:200 @ ARCH.D	drawn by
	sheet

**A3-01**



1. Copyright of this drawing is reserved by the Architect. The drawing is to be used only for the project and site for which it was prepared. It may not be reproduced in whole or in part without prior written permission of the Architect.

2. These Contract Documents are the property of the Architect. The Architect bears no responsibility for the interpretation of these documents. The Architect will provide clarifications, identification or supplementary information regarding the intent of the Contract Documents. The Architect will review Shop Drawings submitted by the Contractor for design coordination only.

3. Drawings are not to be scaled for construction. The Contractor is to work and report and discrepancies with the Contract Documents to the Architect before commencing any work.

4. Finishes of exposed finishes for mechanical or electrical service, fitting and fixtures are indicated on architectural drawings. The location shown on the architectural drawing governs over the mechanical and electrical drawings. Shop drawings shall be scaled as indicated by the Architect.

5. These drawings are not to be used for construction unless noted below as "Issued for Construction".

6. All work is to be carried out in conformance with the Code and Bylaws of the applicable governing jurisdiction.

7. The Architect of these plans and specifications gives no warranty or representation as to the accuracy of the information provided by third parties when bidding and all times ensure that they can properly construct the work represented by these plans.

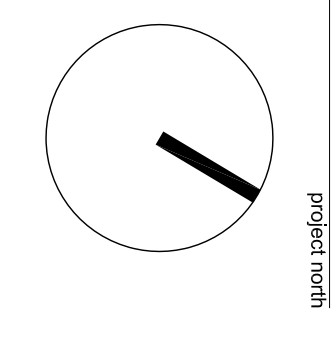
No. Issuance Date (YYYY-MM-DD)  
 01 SITE PLAN APPLICATION 2017-07-27  
 02 SITE PLAN APPLICATION 2017-07-27  
 03 SITE PLAN APPLICATION 2018-05-16

No.	Issuance	Date (YYYY-MM-DD)
01	SITE PLAN APPLICATION	2017-07-27
02	SITE PLAN APPLICATION	2017-07-27
03	SITE PLAN APPLICATION	2018-05-16



**WALLMAN ARCHITECTS**

30 Dundas Street, Suite 202  
 Toronto, Ontario M5V 2G3  
 T 416 340 1870  
 F 416 340 1871  
 info@wallmanarchitects.com



project  
 485 RICHMOND ROAD  
 OTTAWA, ONTARIO

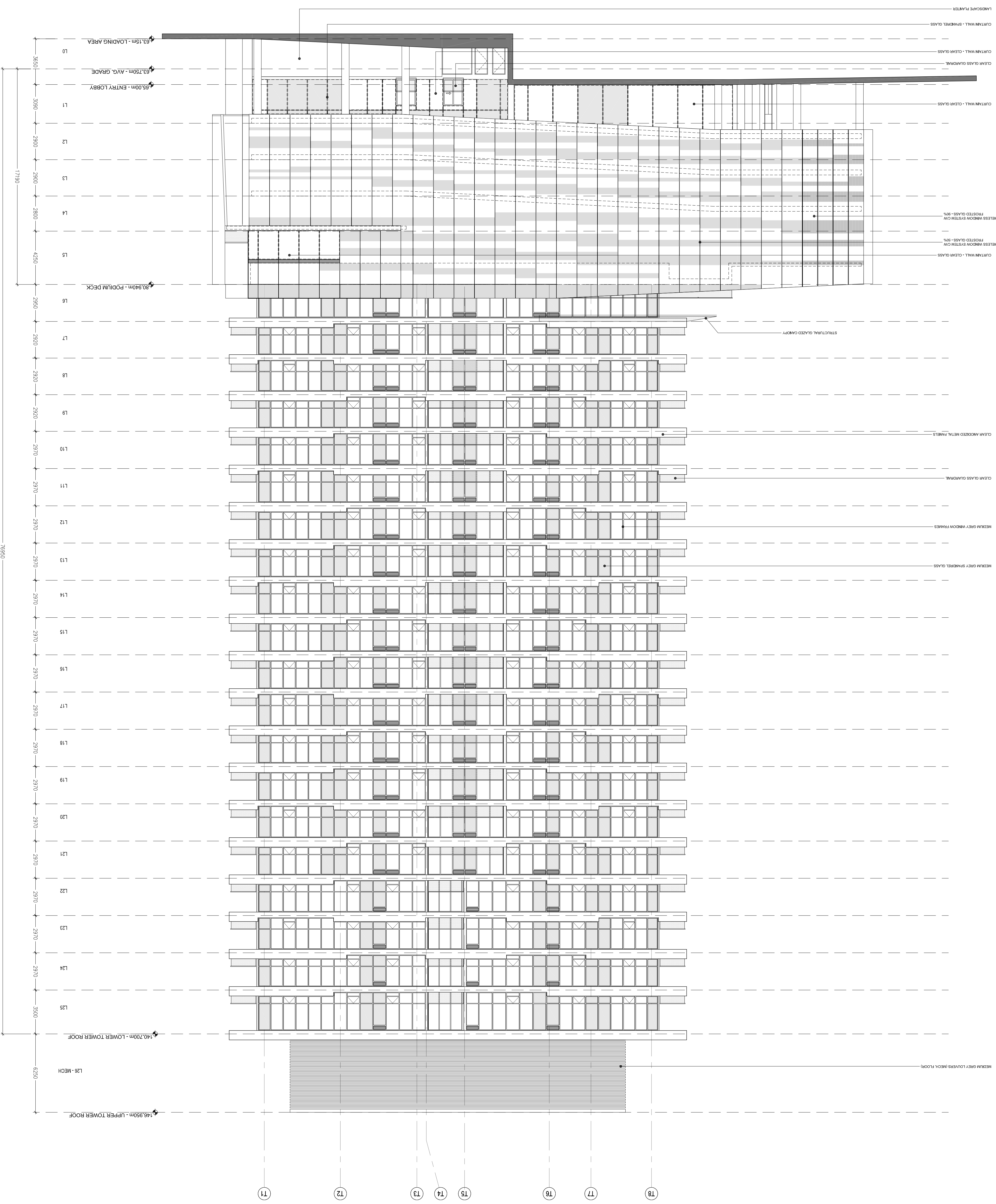
client  
 MINTO COMMUNITIES INC.

206-180 KENT ST. OTTAWA, ON K1P 0B8

site  
**EAST ELEVATION**

project number  
 XX-SS  
 2018.05.16  
 date  
 1:200 @ ARCH.D  
 scale  
 drawn by  
 sheet

**A3-02**



1. Copyright of this drawing is reserved by the Architect. The drawing is to be used only for the project and site for which it was prepared. It may not be reproduced in whole or in part without prior written permission of the Architect.

2. These Contract Documents are the property of the Architect. The Architect bears no responsibility for the interpretation of these documents or for any errors or omissions. The Architect will not be held responsible for any delays or cost overruns caused by the Contractor or any other party.

3. Drawings are not to be scaled for construction. The Contractor is to work and report and discrepancies with the Contract Documents to the Architect before commencing any work.

4. Portions of accepted finishes for mechanical or electrical devices, fittings and fixtures are indicated on architectural drawings. The location shown on the architectural drawing governs over the mechanical and electrical drawings. The Architect's drawings shall be scaled as indicated by the Architect.

5. These drawings are not to be used for construction unless noted below as "Issued for Construction".

6. All work is to be carried out in conformance with the Code and Bylaws of the Province of Ontario.

7. The Architect of these plans and specifications gives no warranty or representation when bidding and it is the responsibility of the Contractor to verify all dimensions and quantities. All contractors or subcontractors must satisfy themselves when bidding and it is their responsibility to ensure that they can properly construct the work represented by these plans.

8. The Architect is not responsible for any errors or omissions in the drawings or for any delays or cost overruns caused by the Contractor or any other party.

9. The Architect is not responsible for any errors or omissions in the drawings or for any delays or cost overruns caused by the Contractor or any other party.

10. The Architect is not responsible for any errors or omissions in the drawings or for any delays or cost overruns caused by the Contractor or any other party.

11. The Architect is not responsible for any errors or omissions in the drawings or for any delays or cost overruns caused by the Contractor or any other party.

12. The Architect is not responsible for any errors or omissions in the drawings or for any delays or cost overruns caused by the Contractor or any other party.

13. The Architect is not responsible for any errors or omissions in the drawings or for any delays or cost overruns caused by the Contractor or any other party.

14. The Architect is not responsible for any errors or omissions in the drawings or for any delays or cost overruns caused by the Contractor or any other party.

15. The Architect is not responsible for any errors or omissions in the drawings or for any delays or cost overruns caused by the Contractor or any other party.

16. The Architect is not responsible for any errors or omissions in the drawings or for any delays or cost overruns caused by the Contractor or any other party.

17. The Architect is not responsible for any errors or omissions in the drawings or for any delays or cost overruns caused by the Contractor or any other party.

18. The Architect is not responsible for any errors or omissions in the drawings or for any delays or cost overruns caused by the Contractor or any other party.

19. The Architect is not responsible for any errors or omissions in the drawings or for any delays or cost overruns caused by the Contractor or any other party.

20. The Architect is not responsible for any errors or omissions in the drawings or for any delays or cost overruns caused by the Contractor or any other party.

21. The Architect is not responsible for any errors or omissions in the drawings or for any delays or cost overruns caused by the Contractor or any other party.

22. The Architect is not responsible for any errors or omissions in the drawings or for any delays or cost overruns caused by the Contractor or any other party.

23. The Architect is not responsible for any errors or omissions in the drawings or for any delays or cost overruns caused by the Contractor or any other party.

24. The Architect is not responsible for any errors or omissions in the drawings or for any delays or cost overruns caused by the Contractor or any other party.

25. The Architect is not responsible for any errors or omissions in the drawings or for any delays or cost overruns caused by the Contractor or any other party.

26. The Architect is not responsible for any errors or omissions in the drawings or for any delays or cost overruns caused by the Contractor or any other party.

27. The Architect is not responsible for any errors or omissions in the drawings or for any delays or cost overruns caused by the Contractor or any other party.

28. The Architect is not responsible for any errors or omissions in the drawings or for any delays or cost overruns caused by the Contractor or any other party.

29. The Architect is not responsible for any errors or omissions in the drawings or for any delays or cost overruns caused by the Contractor or any other party.

30. The Architect is not responsible for any errors or omissions in the drawings or for any delays or cost overruns caused by the Contractor or any other party.

31. The Architect is not responsible for any errors or omissions in the drawings or for any delays or cost overruns caused by the Contractor or any other party.

32. The Architect is not responsible for any errors or omissions in the drawings or for any delays or cost overruns caused by the Contractor or any other party.

33. The Architect is not responsible for any errors or omissions in the drawings or for any delays or cost overruns caused by the Contractor or any other party.

34. The Architect is not responsible for any errors or omissions in the drawings or for any delays or cost overruns caused by the Contractor or any other party.

35. The Architect is not responsible for any errors or omissions in the drawings or for any delays or cost overruns caused by the Contractor or any other party.

36. The Architect is not responsible for any errors or omissions in the drawings or for any delays or cost overruns caused by the Contractor or any other party.

37. The Architect is not responsible for any errors or omissions in the drawings or for any delays or cost overruns caused by the Contractor or any other party.

38. The Architect is not responsible for any errors or omissions in the drawings or for any delays or cost overruns caused by the Contractor or any other party.

39. The Architect is not responsible for any errors or omissions in the drawings or for any delays or cost overruns caused by the Contractor or any other party.

40. The Architect is not responsible for any errors or omissions in the drawings or for any delays or cost overruns caused by the Contractor or any other party.

41. The Architect is not responsible for any errors or omissions in the drawings or for any delays or cost overruns caused by the Contractor or any other party.

42. The Architect is not responsible for any errors or omissions in the drawings or for any delays or cost overruns caused by the Contractor or any other party.

43. The Architect is not responsible for any errors or omissions in the drawings or for any delays or cost overruns caused by the Contractor or any other party.

44. The Architect is not responsible for any errors or omissions in the drawings or for any delays or cost overruns caused by the Contractor or any other party.

45. The Architect is not responsible for any errors or omissions in the drawings or for any delays or cost overruns caused by the Contractor or any other party.

46. The Architect is not responsible for any errors or omissions in the drawings or for any delays or cost overruns caused by the Contractor or any other party.

47. The Architect is not responsible for any errors or omissions in the drawings or for any delays or cost overruns caused by the Contractor or any other party.

48. The Architect is not responsible for any errors or omissions in the drawings or for any delays or cost overruns caused by the Contractor or any other party.

49. The Architect is not responsible for any errors or omissions in the drawings or for any delays or cost overruns caused by the Contractor or any other party.

50. The Architect is not responsible for any errors or omissions in the drawings or for any delays or cost overruns caused by the Contractor or any other party.

51. The Architect is not responsible for any errors or omissions in the drawings or for any delays or cost overruns caused by the Contractor or any other party.

52. The Architect is not responsible for any errors or omissions in the drawings or for any delays or cost overruns caused by the Contractor or any other party.

53. The Architect is not responsible for any errors or omissions in the drawings or for any delays or cost overruns caused by the Contractor or any other party.

54. The Architect is not responsible for any errors or omissions in the drawings or for any delays or cost overruns caused by the Contractor or any other party.

55. The Architect is not responsible for any errors or omissions in the drawings or for any delays or cost overruns caused by the Contractor or any other party.

56. The Architect is not responsible for any errors or omissions in the drawings or for any delays or cost overruns caused by the Contractor or any other party.

57. The Architect is not responsible for any errors or omissions in the drawings or for any delays or cost overruns caused by the Contractor or any other party.

58. The Architect is not responsible for any errors or omissions in the drawings or for any delays or cost overruns caused by the Contractor or any other party.

59. The Architect is not responsible for any errors or omissions in the drawings or for any delays or cost overruns caused by the Contractor or any other party.

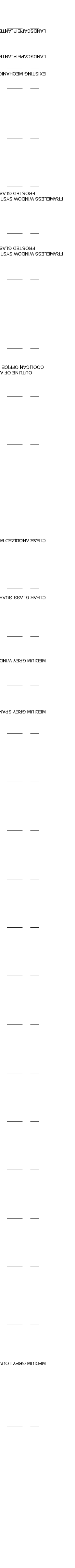
60. The Architect is not responsible for any errors or omissions in the drawings or for any delays or cost overruns caused by the Contractor or any other party.

61. The Architect is not responsible for any errors or omissions in the drawings or for any delays or cost overruns caused by the Contractor or any other party.

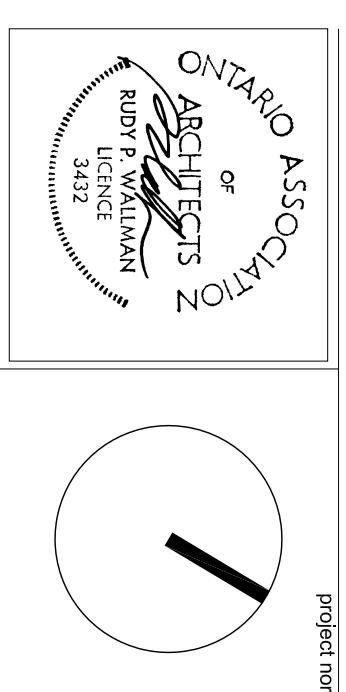
62. The Architect is not responsible for any errors or omissions in the drawings or for any delays or cost overruns caused by the Contractor or any other party.

63. The Architect is not responsible for any errors or omissions in the drawings or for any delays or cost overruns caused by the Contractor or any other party.

64. The Architect is not responsible for any errors or omissions in the drawings or for any delays or cost overruns caused by the Contractor or any other party.



**WALLMAN ARCHITECTS**  
30 Dundas Street, Suite 202  
Toronto, Ontario M5V 2C3  
T 416 340 1870  
F 416 340 1871  
info@wallmanarchitects.com



485 RICHMOND ROAD  
OTTAWA, ONTARIO

MINTO COMMUNITIES INC.

206-181 KENT ST. OTTAWA, ON K1P 0B8

WEST ELEVATION

project number: 2013.05.18  
date: 2013.05.18  
scale: 1:200 @ ARCH.D  
drawn by: [blank]  
sheet: A3-03

1. Copyright of this drawing is reserved by the Architect. The drawing is to be used only for the project and site for which it was prepared. It may not be reproduced in whole or in part without prior written permission of the Architect.

2. These Contract Documents are the property of the Architect. The Architect bears no responsibility for the interpretation of these documents by anyone other than the Architect. The Architect will provide appropriate clarification or supplementary information regarding the intent of the Contract Documents. The Architect will review Shop Drawings submitted by the Contractor for design compliance only.

3. Drawings are not to be scaled for construction. The Contractor is to work and report and discrepancies with the Contract Documents to the Architect before commencing any work.

4. Finishes of exposed finishes for mechanical or electrical service, fitting and fixtures are indicated on architectural drawings. The location shown on the architectural drawing governs over the mechanical and electrical drawings. Shop drawings for such items will be scaled as directed by the Architect.

5. These drawings are not to be used for construction unless noted below as "Issued for Construction".

6. All work to be carried out in conformance with the Code and Bylaws of the applicable governing jurisdiction.

7. The Architect of these plans and specifications gives no warranty or representation as to the accuracy of the information provided by others, or representatives when bidding and it all times ensure that they can properly construct the work represented by these plans.

No.	Revisions	Date (YYYY/MM/DD)
01	SITE PLAN APPLICATION	2017/07/27
02	SITE PLAN APPLICATION	2017/07/27
03	SITE PLAN APPLICATION	2018/05/18



**WALLMAN ARCHITECTS**

30 Dundas Street, Suite 202  
Toronto, Ontario M5V 2C3  
T 416 340 1870  
F 416 340 1871  
info@wallmanarchitects.com



485 RICHMOND ROAD  
OTTAWA, ONTARIO

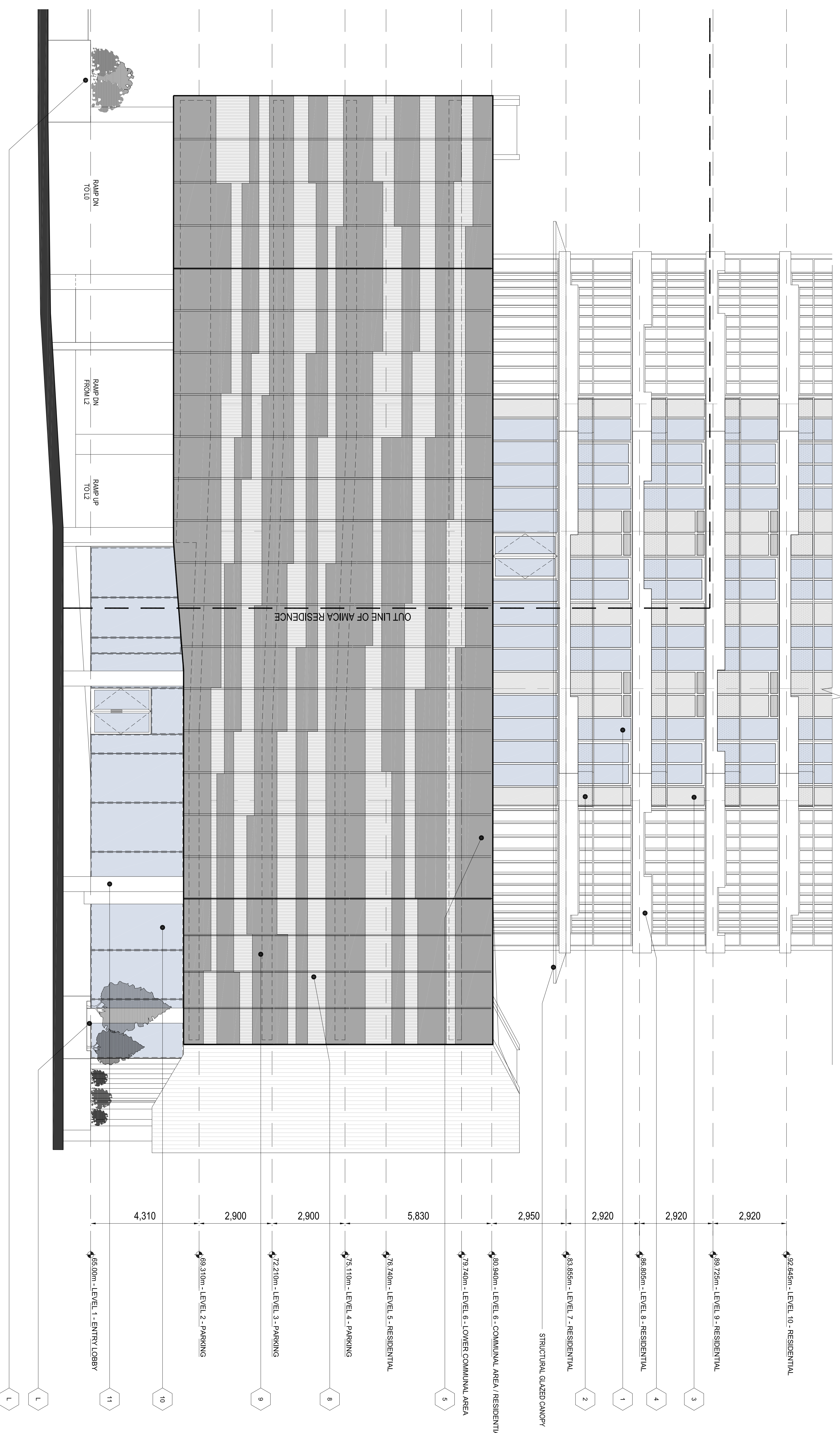
MINTO COMMUNITIES INC.

2004-180 KENT ST. OTTAWA, ON K1P 0B8

SOUTH (ENTRY) ELEVATION

project number: KX-SS  
date: 2018.05.18  
scale: 1/75 @ ARCH D  
drawn by: [blank]  
sheet: [blank]

A3-04



**MATERIAL LEGEND**

- 1 LIGHT GREY TINTED GLAZING
- 2 CLEAR TEMPERED GLASS GUARDRAIL
- 3 MEDIUM GREY SPANDREL GLASS
- 4 PRE-FINISHED CLEAR ANODIZED METAL PANELS
- 5 GLASS GUARDRAIL / 90% FROSTED GLASS (FRAMELESS WINDOW SYSTEM)
- 6 MEDIUM GREY SPANDREL OR FROSTED GLASS SPANDREL
- 7 LIGHT GREY TINTED GLAZING
- 8 50% FROSTED GLASS (FRAMELESS WINDOW SYSTEM)
- 9 90% FROSTED GLASS (FRAMELESS WINDOW SYSTEM)
- 10 CLEAR GLAZED CURTAIN WALL SYSTEM

01 RICHMOND ROAD (SOUTH) ENTRY ELEVATION

SCALE: 1/75

1. Copyright of this drawing is reserved by the Architect. The drawing is the property of the Architect and shall remain the property of the Architect. The drawing and its contents shall not be reproduced in whole or in part without prior written permission of the Architect.

2. These Contract Documents are the property of the Architect. The Architect bears no responsibility for the interpretation of these documents. The Architect shall not be held responsible for any errors or omissions in the drawings. The Architect will not be held responsible for any errors or omissions in the drawings. The Architect will not be held responsible for any errors or omissions in the drawings.

3. Drawings are not to be scaled for construction. The Contractor is to work and report and discrepancies with the Contract Documents to the Architect before commencing any work.

4. Portions of accepted finishes for mechanical or electrical devices, fittings and fixtures are indicated on architectural drawings. The location shown on the architectural drawing governs over the mechanical and electrical drawings. The Contractor shall verify the location of these devices and fixtures on the drawings and shall be held responsible for any errors or omissions in the drawings.

5. These drawings are not to be used for construction unless noted below as "Issued for Construction".

6. All work is to be carried out in conformance with the Code and Bylaws of the Province of Ontario.

7. The Architect of these plans and specifications gives no warranty or representation by them. All contractors or subcontractors must satisfy themselves when bidding and at all times ensure that they can properly construct the work represented by these plans.

No.	Revisions	Date (YYYY/MM/DD)
01	SITE PLAN APPLICATION	2017/07/27
02	SITE PLAN APPLICATION	2018/05/16
03	SITE PLAN APPLICATION	2018/05/16



**CANDEREL**

**WALLMANARCHITECTS**

30 Dundas Street, Suite 202  
Toronto, Ontario M5V 2C3  
T 416 340 1870  
F 416 340 1871  
info@wallmanarchitects.com

488 RICHMOND ROAD  
OTTAWA, ONTARIO

MINTO COMMUNITIES INC.

2004-180 KENT ST. OTTAWA, ON K1P 0B8

NORTH (PARKWAY) ELEVATION

project number: XXX-SS  
date: 2018.05.16  
scale: 1/75 @ ARCH D  
drawn by: [blank]  
sheet: [blank]

A3-05

