

**TREE LIST**

#	BOTANICAL NAME	COMMON NAME	CAUPEI (cm)	CONDITION	APPROXIMATE AGE	HIGH QUALITY TREE	RARE TREE	COMMENTS	TO BE PRESERVED
1	Quercus rubra	Red Oak	approx 10	Poor	15	NO	NO	Tree is well-maintained and in good condition. Canopy is damaged and half dead. Tree is off property.	YES
2	Gleditsia triacanthos	Honeylocust	11.5	Good	15-20	NO	NO	Tree is well-maintained and in good condition.	NO
3	Gleditsia triacanthos	Honeylocust	14.0	Good	15-20	NO	NO	Tree is well-maintained and in good condition.	NO
4	Pinus mugo	Mugo Pine	N/S	Moderate	30	NO	NO	Tree is very mature and very large for this species. One of the stems is injured, but overall the tree is healthy.	NO
5	Pinus mugo	Mugo Pine	MS(3) range from 8-15	Moderate	30	NO	NO	Tree is very mature, though in relatively good condition.	NO
6	Pinus mugo	Mugo Pine	MS(3) range from 8-15	Moderate	30	NO	NO	Tree is very mature, though in relatively good condition.	NO
7	Pinus mugo	Mugo Pine	MS(5) range from 10-15	Moderate	30	NO	NO	Tree is very mature, though in relatively good condition.	NO
8	Acer negundo	Manitoba Maple	MS(4) range from 25-37	moderate-good	30	NO	NO	The tree is leaning slightly, one stem having been removed already. The remaining base from the removed stem is decaying with some cavities. There are injuries on the remaining trunk.	NO
9	Acer negundo	Manitoba Maple	25.0	moderate-poor	20	NO	NO	Co-dominant stems are weakly joined, with the smaller of the two stems showing signs of injury. Tree is well-maintained and in good condition.	NO
10	Acer negundo	Manitoba Maple	MS(2) 33 and 29	moderate-poor	99	NO	NO		NO
11	Acer x freemanii	Freeman Maple	13.0	Good	15	NO	NO		NO

**VEGETATION NOTES:**

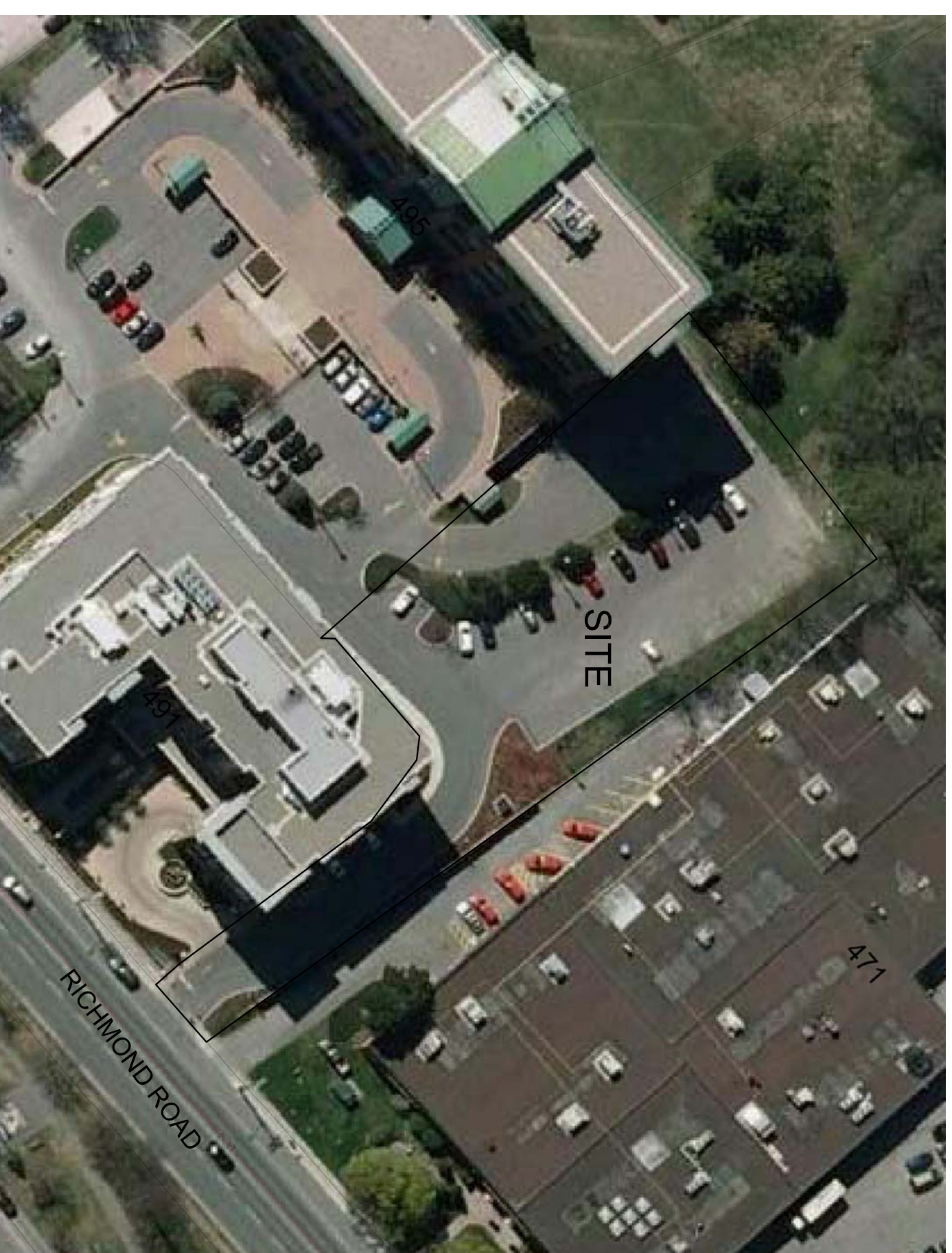
- A) LANDSCAPE SHRUBS ON ADJACENT PROPERTY. WELL-MAINTAINED.
- B) OVERGROWN HONEYSUCKLE BUSHES AND MANITوبا MAPLE VOLUNTEERS. OBSCURES TREE 4.
- C) WEEDY PERENNIAL/ ANNUALS. MANITوبا MAPLE VOLUNTEERS. THE CANOPY OF A LARGE ELM ON THE ADJACENT PROPERTY OVERHANGS THE SITE.
- D) THE CANOPY OF A LARGE MANITوبا MAPLE ON THE ADJACENT PROPERTY OVERHANGS THE SITE.
- E) 5 SMALL THUJA OCCIDENTALIS (ALL WITH DBH <10cm DBH), IN POOR CONDITION.
- F) LANDSCAPE SHRUBS IN MODERATE CONDITION. INCLUDING LILAC, RUGOSA ROSE.
- G) LANDSCAPE SHRUBS, IN GOOD CONDITION, INCLUDING PRIVET HEDGE, AND RUGOSA ROSE.

**SITE NOTES:**

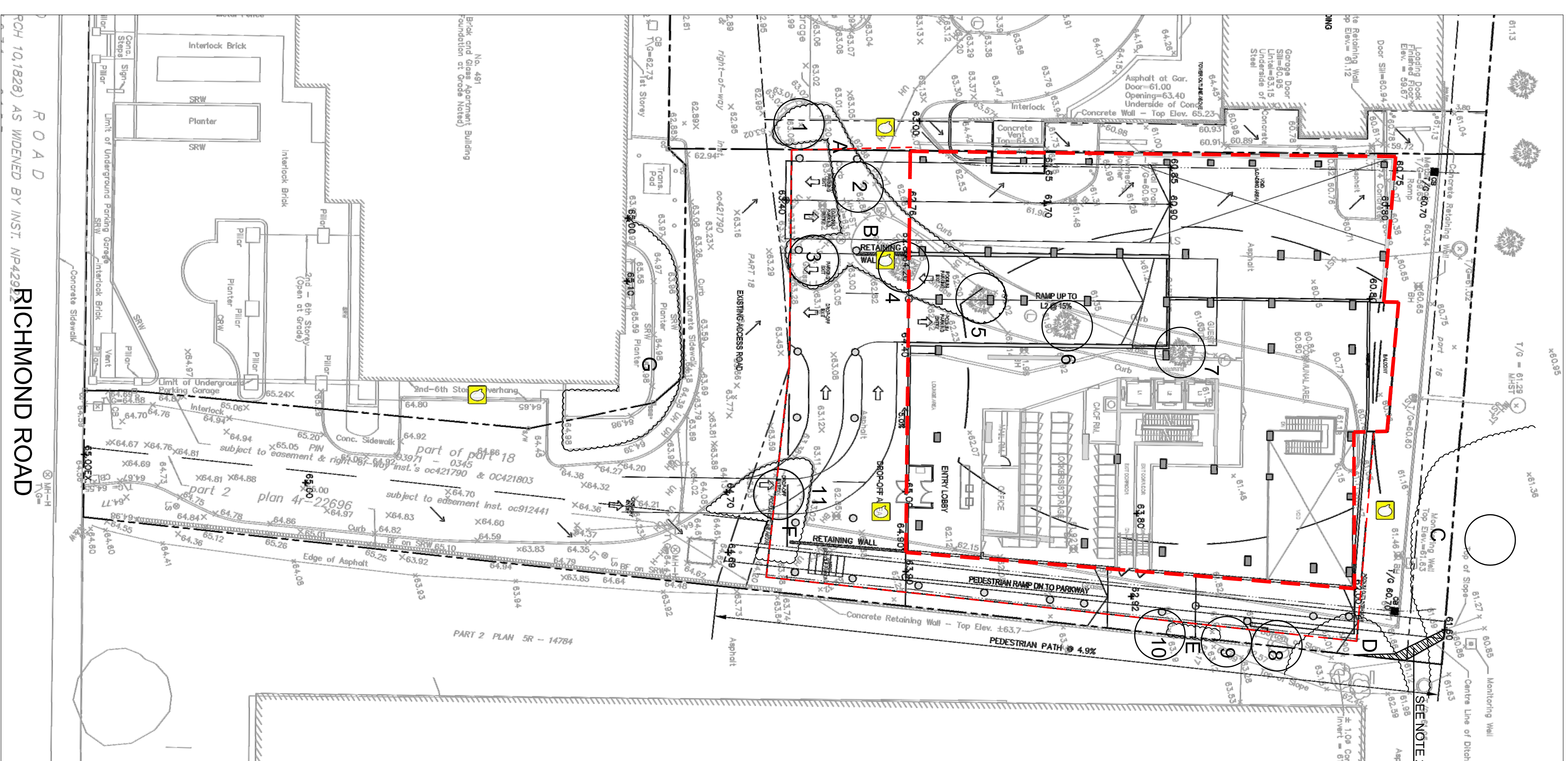
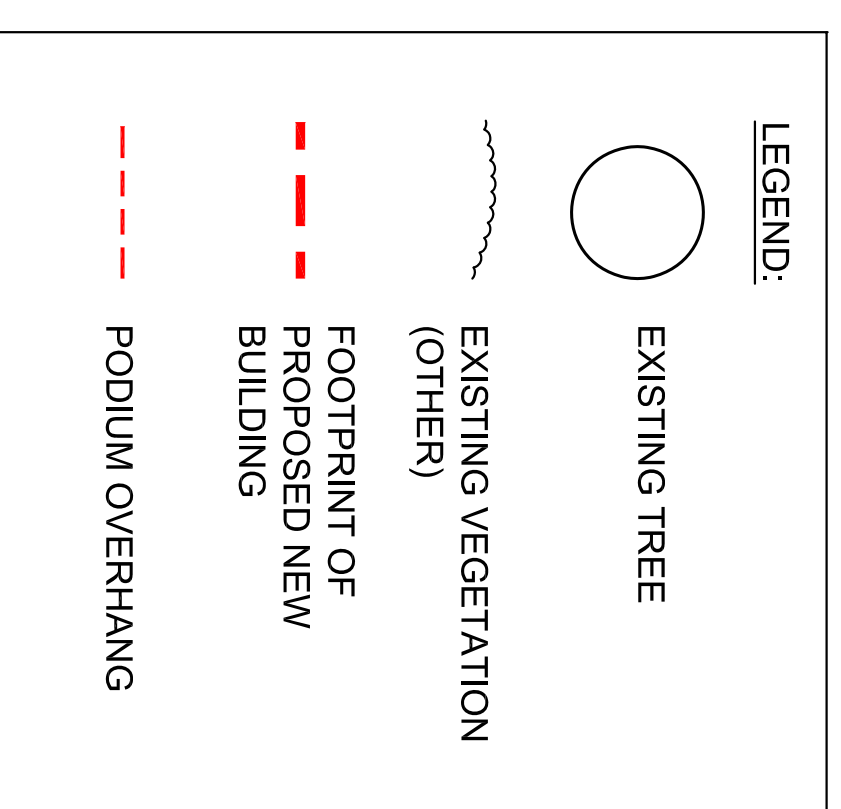
- 1) WHILE THE SITE IS NEAR TO A CONTRIBUTING GREENSPACE (AS PER MAP 1 OF THE OTTAWA GREENSPACE MASTER PLAN), THE TREES ON THE SITE AND THE SITE ITSELF ARE NOT PARTICULARLY VALUABLE. THE MAJORITY OF THE SITE IS CURRENTLY PAVED AND USED AS A PARKING LOT.
- 2) THERE IS A SMALL WATERCOURSE THAT CUTS ACROSS THE NORTH CORNER OF THE SITE, BETWEEN THE OVERHANGS IDENTIFIED IN VEGETATION NOTES 'C' AND 'D'. THE DRAIN PASSES THROUGH A LARGE CULVERT, AND IS NOT IDENTIFIED AS A MUNICIPAL DRAIN ON THE CITY OF OTTAWA EMAPS SITE.
- 3) THERE ARE CURRENTLY NO TREES ON THE SITE INTENDED TO BE PRESERVED (TREE # 1 IS ON THE ADJACENT SITE). THIS IS DUE TO THE INTENSITY OF THE DEVELOPMENT. THESE WILL BE REPLACED WITH 22 PROPOSED NEW TREES (REFER TO LANDSCAPE PLAN). THE NEW SPECIES WILL BE SELECTED BASED ON THEIR URBAN TOLERANCE, DUE TO THE INTENSITY OF THE PROPOSED DEVELOPMENT. THE DECIDUOUS TREE SELECTION WILL BE NATIVE TO NORTH AMERICA, AS THERE ARE SPECIES TOLERANT OF URBAN CONDITIONS AVAILABLE. HOWEVER THE CONIFEROUS SELECTIONS MAY BE ALLEN, BUT SELECTED FOR HARDINESS AND TOLERANCE.
- 4) IMPACT ON ADJACENT SITE WILL BE MINIMAL, DUE TO LITTLE CHANGE IN QUANTITY OF IMPERVIOUS SURFACES AND A NET GAIN IN TREE QUANTITY. REFER TO LANDSCAPE PLAN FOR PROTECTION OF BRANCHES FROM TREES ON ADJACENT PROPERTIES.

**ADDITIONAL INFORMATION**

- 1) OWNER: MINTO COMMUNITIES AND CANDEREL
- 2) APPLICANT: CSM, LTD. 1980 SCOTT ST, SUITE 200 OTTAWA, ON K1Z 8L8 613-729-4536
- 3) AUTHOR: LISA MACDONALD, B.L.A. CSLA, CERTIFIED ARBORIST (ON-1513A) CORUSH SUNDERLAND WRIGHT, LTD. 1980 SCOTT ST, SUITE 200 OTTAWA, ON K1Z 8L8 613-729-4536 X 228
- 4) CONTRACTOR: MINTO COMMUNITIES
- 5) MUNICIPAL ADDRESS OF THE SITE: 485 RICHMOND RD. OTTAWA, ON
- 6) OFFICIAL PLAN & ZONING DESIGNATION: GENERAL URBAN AREA TM1517 FC.31 S149
- 7) SITE APPLICATION NO.: N/A
- 8) SCHEDULE: FALL 2013
- 9) FUTURE APPLICATIONS: THIS DEVELOPMENT WILL NOT BE PHASED.



**AERIAL PHOTO**



**WALLMAN ARCHITECTS**  
 30 Duncan Street, Suite 202  
 Toronto, Ontario M5V 2C3  
 T 416 340 1870  
 F 416 340 1871  
 info@wallmanarchitects.com

Landscape Architecture  
 Urban Design  
 Site Planning  
 Recreation and Park Planning

THE SEAL: 30th June 2006, Ottawa, Canada 01283  
 TR: (3) 729-4536

No.	Date	Drawn
Revised for Site Plan Approval	2012.02.22	

**ASSOCIATION OF LANDSCAPE ARCHITECTS OF ONTARIO**

**ARBORIST REPORT**

485 RICHMOND ROAD  
 OTTAWA, ONTARIO

MINTO COMMUNITIES INC.

client

project

15774A

2012/02/20

1:200

ARB-1