

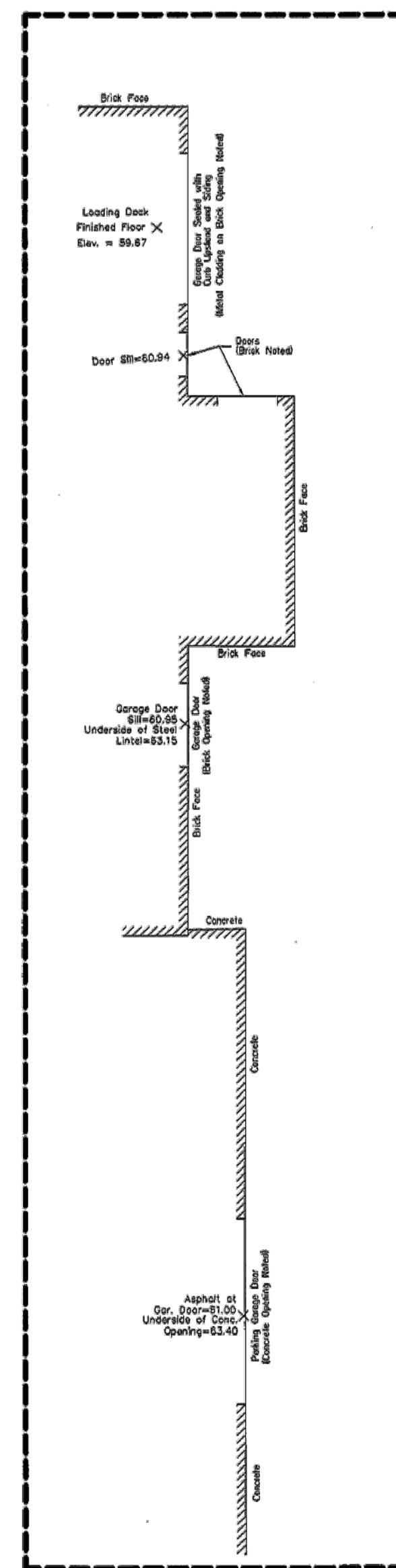
**TOPOGRAPHICAL PLAN OF
PART OF LOT 29
CONCESSION 1
(Ottawa Front)
Geographic Township of Nepean
CITY OF OTTAWA**

Prepared by
Annis, O'Sullivan, Vollebek Ltd.
Date: Nov 30 2010
E.H. Hervey O.L.S.

Scale 1 : 300
Metric
DISTANCES SHOWN ON THIS PLAN ARE IN METRES AND
CAN BE CONVERTED TO FEET BY DIVIDING BY 0.3048

Notes & Legend

(P)	Plan 4R-19996
(D)	Deciduous Tree
(C)	Coniferous Tree
(F)	Fire Hydrant
(H)	Hydrant Valve
(M-S)	Maintenance Hole (Storm Sewer)
(M-B)	Maintenance Hole (Sanitary)
(M-T)	Maintenance Hole (Bell Telephone)
(M-H)	Maintenance Hole (Hydro)
(M-U)	Maintenance Hole (Undersified)
(S)	Underground Storm Sewer
(U)	Overhead Utility Wires
(P)	Underground Power
(CB)	Catch Basin
(B)	Borehole
(M)	Gas Meter
(H)	Handhole
(B)	Boiler
(S)	Sign
(P)	Post Pedestal
(CLF)	Chain Link Fence
(BF)	Board Fence
(PO-W)	Wood Pole
(UP)	Utility Pole
(AN)	Anchor
(LS)	Light Standard
(D)	Diameter
(E)	Location of Elevations
(T/G)	Top of Grade
(CAL)	Centreline
(P)	Property Line
(CRW)	Concrete Retaining Wall
(SRW)	Stone Retaining Wall



Bottom face of curb elevations noted typically.

**BOUNDARY INFORMATION COMPILED FROM
PLAN 4R-19996.**

ELEVATION NOTES
1. Elevations shown are referred to geoidless datum.
2. It is the responsibility of the user of this information to verify that the job benchmark has not been altered or disturbed and that its relative elevation and description agrees with the information shown on this drawing.

UTILITY NOTES
1. This drawing cannot be accepted as acknowledging all of the utilities and it will be the responsibility of the user to contact the respective utility authorities for confirmation.
2. Only visible surface utilities were located.
3. A field location of underground plant by the pertinent utility authority is mandatory before any work involving breaking ground, probing, excavating etc.

ANNIS, O'SULLIVAN, VOLLEBEK LTD.
14 Concourse Drive, Suite 500
Nepean, Ont. K2B 7R8
Phone: (613) 727-0850 / Fax: (613) 727-1079
www.aovll.com

- Copyright of this drawing is reserved by the Architect. The drawing, and all associated documents are instruments of service by the Architect. The drawing, and the information contained therein, may not be reproduced in whole or in part without prior written permission of the Architect.
- These Contract Documents are the property of the Architect. The Architect bears no responsibility for the interpretation of these documents by the Contractor. Upon written application the Architect will provide written clarification or supplementary information regarding the intent of the Contract Documents. The Architect will review Shop Drawings submitted by the Contractor for design conformance only.
- Drawings are not to be scaled for construction. The Contractor is to verify all existing conditions and dimensions required to perform the work and report and discrepancies with the Contract Documents to the Architect before commencing any work.
- Positions of exposed finishes for mechanical or electrical devices, fitting and fixtures are indicated on architectural drawings. The location shown on the architectural drawing govern over the mechanical and electrical drawings. Those items not clearly located will be located as directed by the Architect.
- These drawings are not to be used for construction unless noted below as "Issued for Construction".
- All work is to be carried out in conformance with the Code and Bylaws of the Authorities having jurisdiction.
- The Architect of these plans and specifications gives no warranty or representation to any party about the constructability of the building(s) represented by them. All contractors or subcontractors must satisfy themselves when bidding and at all times ensure that they can properly construct the work represented by these plans.

No. Issuance Date (YYYYMMDD)
01 SITE PLAN APPLICATION 2012.07.27



CANDEREL
WALLMANARCHITECTS

30 Duncan Street, Suite 202
Toronto, Ontario M5V 2C3
t 416 340 1870
f 416 340 1871
info@wallmanarchitects.com



485 RICHMOND ROAD
OTTAWA, ONTARIO

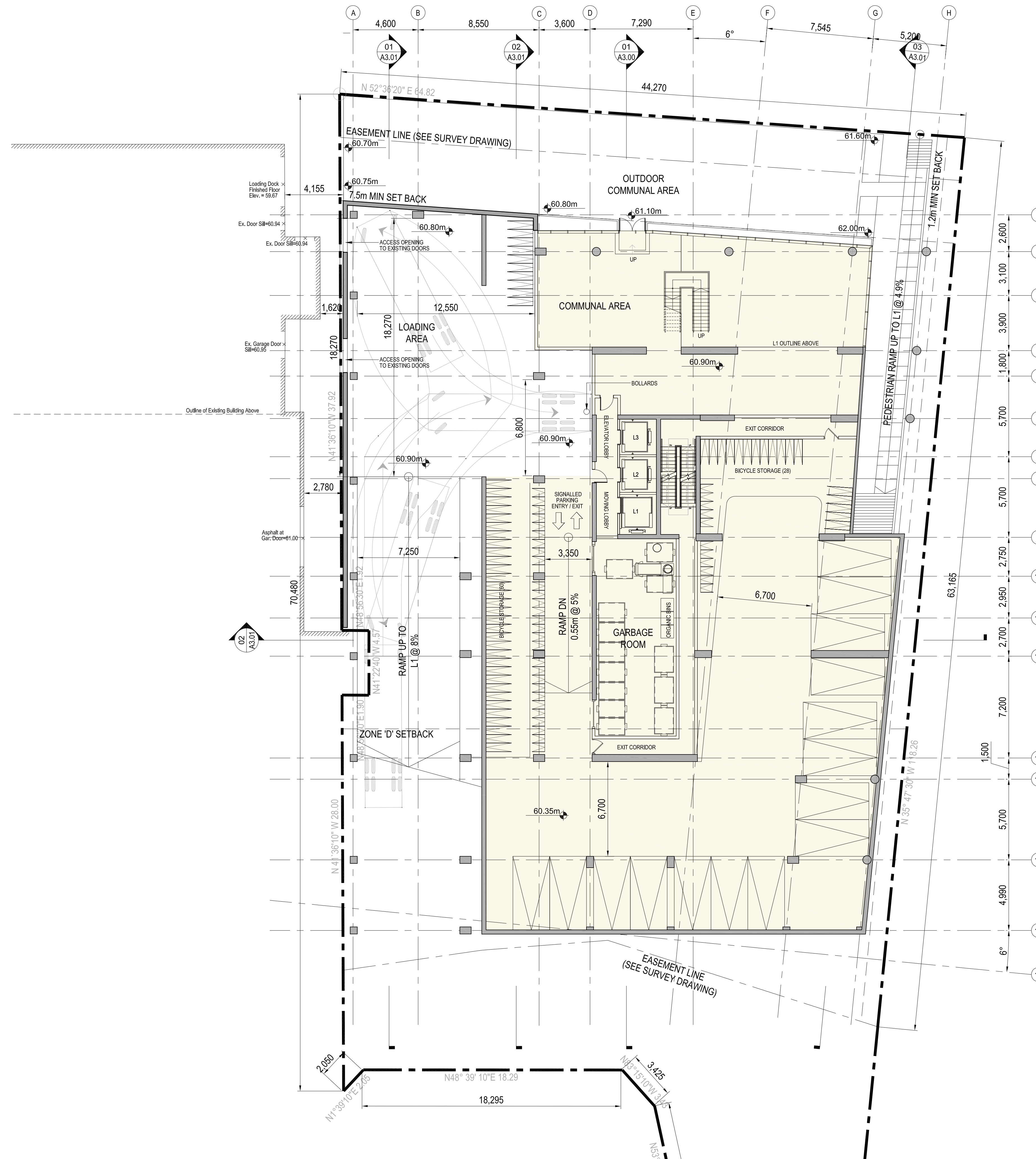
MINTO COMMUNITIES INC.

200-180 KENT ST. OTTAWA, ON, K1P 0B6

EXISTING SITE SURVEY

XX-SS project number
2012.07.27 date
NTS scale
drawn by
sheet

A1.00



1. Copyright of this drawing is reserved by the Architect. The drawing, and all associated documents are instruments of service by the Architect. The drawing, and the information contained therein, may not be reproduced in whole or in part without prior written permission of the Architect.

2. These Contract Documents are the property of the Architect. The Architect bears no responsibility for the interpretation of these documents by the Contractor. Upon written application the Architect will provide written clarification or supplementary information regarding the intent of the Contract Documents. The Architect will review Shop Drawings submitted by the Contractor for design conformance only.

3. Drawings are not to be scaled for construction. The Contractor is to verify all existing conditions and dimensions required to perform the work and report and discrepancies with the Contract Documents to the Architect before commencing any work.

4. Positions of exposed finishes for mechanical or electrical devices, fitting and fixtures are indicated on architectural drawings. The location shown on the architectural drawing govern over the mechanical and electrical drawings. Those items not clearly located will be located as directed by the Architect.

5. These drawings are not to be used for construction unless noted below as "Issued for Construction".

6. All work is to be carried out in conformance with the Code and Bylaws of the Authorities having jurisdiction.

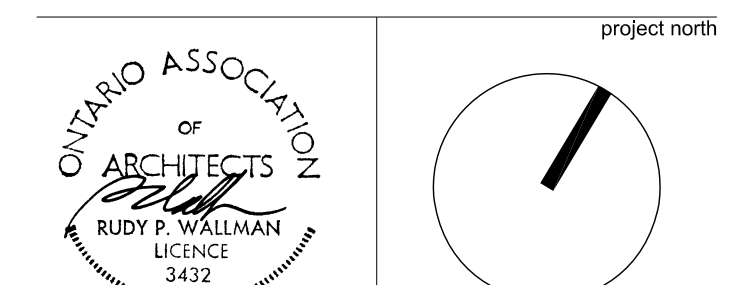
7. The Architect of these plans and specifications gives no warranty or representation to any party about the constructability of the building(s) represented by them. All contractors or subcontractors must satisfy themselves when bidding and at all times ensure that they can properly construct the work represented by these plans.

No.	Issuance	Date (YYYY.MM.DD)
01	SITE PLAN APPLICATION	2012.07.27



CANDEREL
WALLMANARCHITECTS

30 Duncan Street, Suite 202
Toronto, Ontario M5V 2C3
t 416 340 1870
f 416 340 1871
info@wallmanarchitects.com



485 RICHMOND ROAD
OTTAWA, ONTARIO

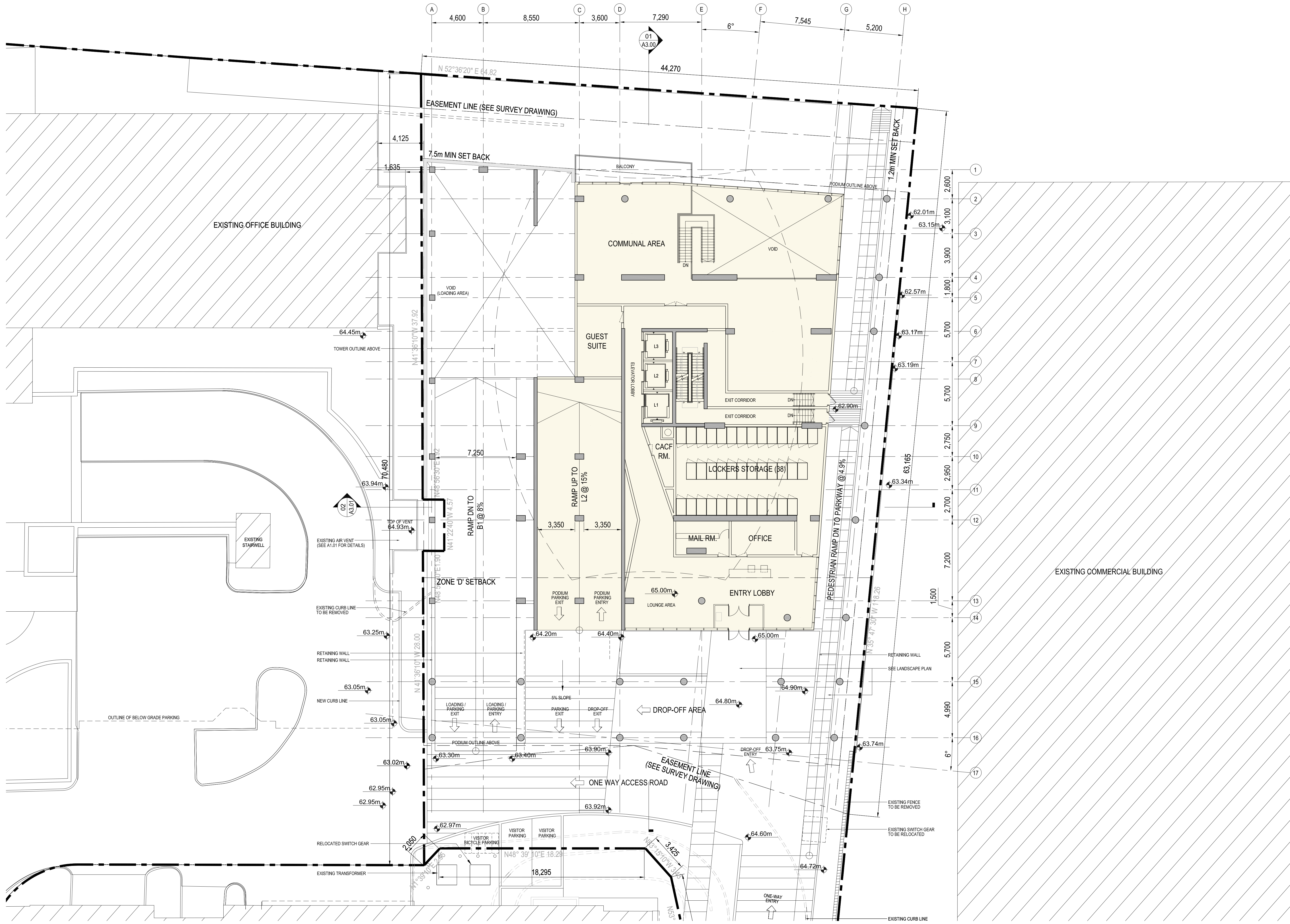
MINTO COMMUNITIES INC.

200-180 KENT ST. OTTAWA, ON, K1P 0B6

BASEMENT LEVEL (B1)
FLOOR PLAN

XX-SS	project number
2012.07.27	date
1:150 @ ARCH D	scale
	drawn by
	sheet

A2.00



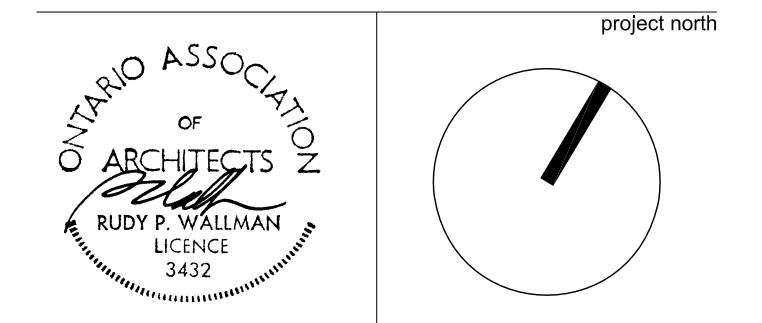
- Copyright of this drawing is reserved by the Architect. The drawing, and all associated documents are instruments of service by the Architect. The drawing, and the information contained therein, may not be reproduced in whole or in part without prior written permission of the Architect.
- These Contract Documents are the property of the Architect. The Architect bears no responsibility for the interpretation of these documents by the Contractor. Upon written application the Architect will provide written clarification or supplementary information regarding the intent of the Contract Documents. The Architect will review Shop Drawings submitted by the Contractor for design conformance only.
- Drawings are not to be scaled for construction. The Contractor is to verify all existing conditions and dimensions required to perform the work and report and discrepancies with the Contract Documents to the Architect before commencing any work.
- Positions of exposed finishes for mechanical or electrical devices, fitting and fixtures are indicated on architectural drawings. The location shown on the architectural drawing governs over the mechanical and electrical drawings. Those items not clearly located will be located as directed by the Architect.
- These drawings are not to be used for construction unless noted below as "Issued for Construction".
- All work is to be carried out in conformance with the Code and Bylaws of the Authorities having jurisdiction.
- The Architect of these plans and specifications gives no warranty or representation to any party about the constructability of the building(s) represented by them. All contractors or subcontractors must satisfy themselves when bidding and at all times ensure that they can properly construct the work represented by these plans.

No.	Issuance	Date (YYYY.MM.DD)
01	SITE PLAN APPLICATION	2012.07.27



CANDEREL
WALLMANARCHITECTS

30 Duncan Street, Suite 202
 Toronto, Ontario M5V 2C3
 t 416 340 1870
 f 416 340 1871
 info@wallmanarchitects.com



485 RICHMOND ROAD
 OTTAWA, ONTARIO
 .
 .
 MINTO COMMUNITIES INC., client
 200-180 KENT ST. OTTAWA, ON, K1P 0B6
 .
 .
 title

**GROUND FLOOR PLAN (L1)
 FLOOR PLAN**

XX-SS project number
 2012.07.27 date
 1:150 @ ARCH D scale
 drawn by
 sheet

A2.01



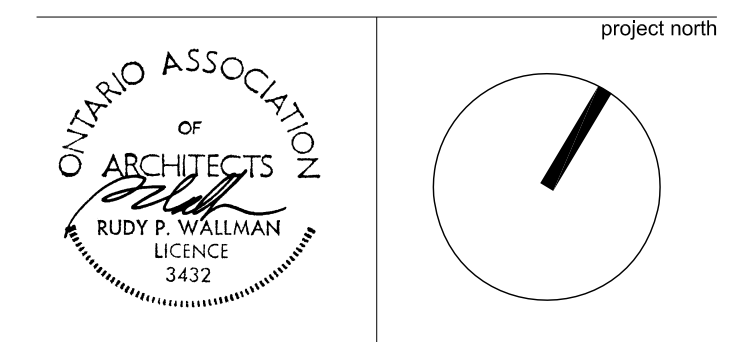
- Copyright of this drawing is reserved by the Architect. The drawing, and all associated documents are instruments of service by the Architect. The drawing, and the information contained therein, may not be reproduced in whole or in part without prior written permission of the Architect.
- These Contract Documents are the property of the Architect. The Architect bears no responsibility for the interpretation of these documents by the Contractor. Upon written application the Architect will provide written/graphic clarification or supplementary information regarding the intent of the Contract Documents. The Architect will review Shop Drawings submitted by the Contractor for design conformance only.
- Drawings are not to be scaled for construction. The Contractor is to verify all existing conditions and dimensions required to perform the work and report and discrepancies with the Contract Documents to the Architect before commencing any work.
- Positions of exposed finishes for mechanical or electrical devices, fitting and fixtures are indicated on architectural drawings. The location shown on the architectural drawing govern over the mechanical and electrical drawings. Those items not clearly located will be located as directed by the Architect.
- These drawings are not to be used for construction unless noted below as "Issued for Construction".
- All work is to be carried out in conformance with the Code and Bylaws of the Authorities having jurisdiction.
- The Architect of these plans and specifications gives no warranty or representation to any party about the constructability of the building(s) represented by them. All contractors or subcontractors must satisfy themselves when bidding and at all times ensure that they can properly construct the work represented by these plans.

No.	Issuance	Date (YYYY-MM-DD)
01	SITE PLAN APPLICATION	2012.07.27



CANDEREL
WALLMANARCHITECTS

30 Duncan Street, Suite 202
Toronto, Ontario M5V 2C3
t 416 340 1870
f 416 340 1871
info@wallmanarchitects.com



485 RICHMOND ROAD
OTTAWA, ONTARIO

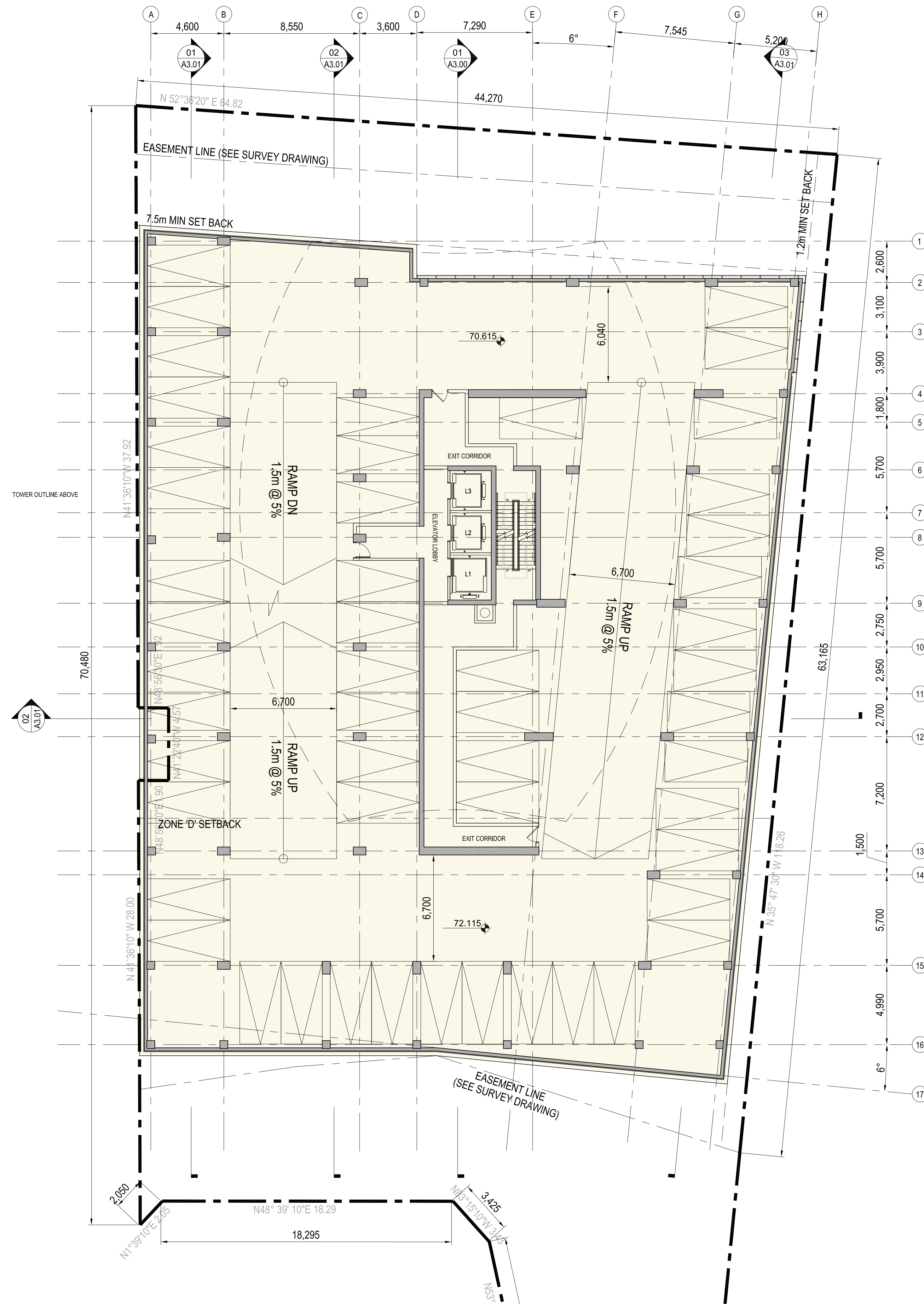
MINTO COMMUNITIES INC.

200-180 KENT ST. OTTAWA, ON, K1P 0B6

PODIUM LEVEL 2 (L2)
FLOOR PLAN

XX-SS	project number
2012.07.27	date
1:150 @ ARCH D	scale
	drawn by
	sheet

A2.02



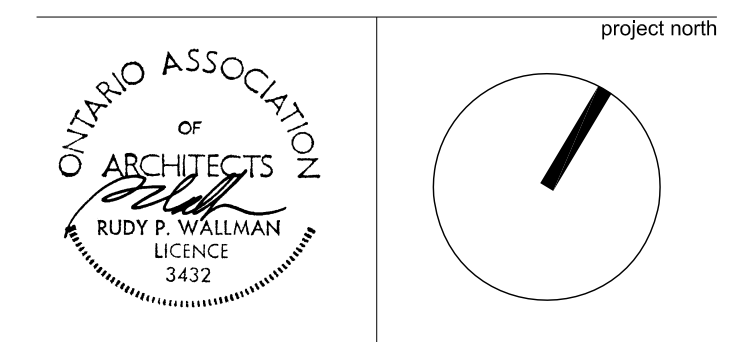
- Copyright of this drawing is reserved by the Architect. The drawing, and all associated documents are instruments of service by the Architect. The drawing, and the information contained therein, may not be reproduced in whole or in part without prior written permission of the Architect.
- These Contract Documents are the property of the Architect. The Architect bears no responsibility for the interpretation of these documents by the Contractor. Upon written application the Architect will provide written clarification or supplementary information regarding the intent of the Contract Documents. The Architect will review Shop Drawings submitted by the Contractor for design conformance only.
- Drawings are not to be scaled for construction. The Contractor is to verify all existing conditions and dimensions required to perform the work and report and discrepancies with the Contract Documents to the Architect before commencing any work.
- Positions of exposed finishes for mechanical or electrical devices, fitting and fixtures are indicated on architectural drawings. The location shown on the architectural drawing govern over the mechanical and electrical drawings. Those items not clearly located will be located as directed by the Architect.
- These drawings are not to be used for construction unless noted below as "Issued for Construction".
- All work is to be carried out in conformance with the Code and Bylaws of the Authorities having jurisdiction.
- The Architect of these plans and specifications gives no warranty or representation to any party about the constructability of the building(s) represented by them. All contractors or subcontractors must satisfy themselves when bidding and at all times ensure that they can properly construct the work represented by these plans.

No.	Issuance	Date (YYYY-MM-DD)
01	SITE PLAN APPLICATION	2012.07.27



CANDEREL
WALLMANARCHITECTS

30 Duncan Street, Suite 202
Toronto, Ontario M5V 2C3
t 416 340 1870
f 416 340 1871
info@wallmanarchitects.com



485 RICHMOND ROAD
OTTAWA, ONTARIO

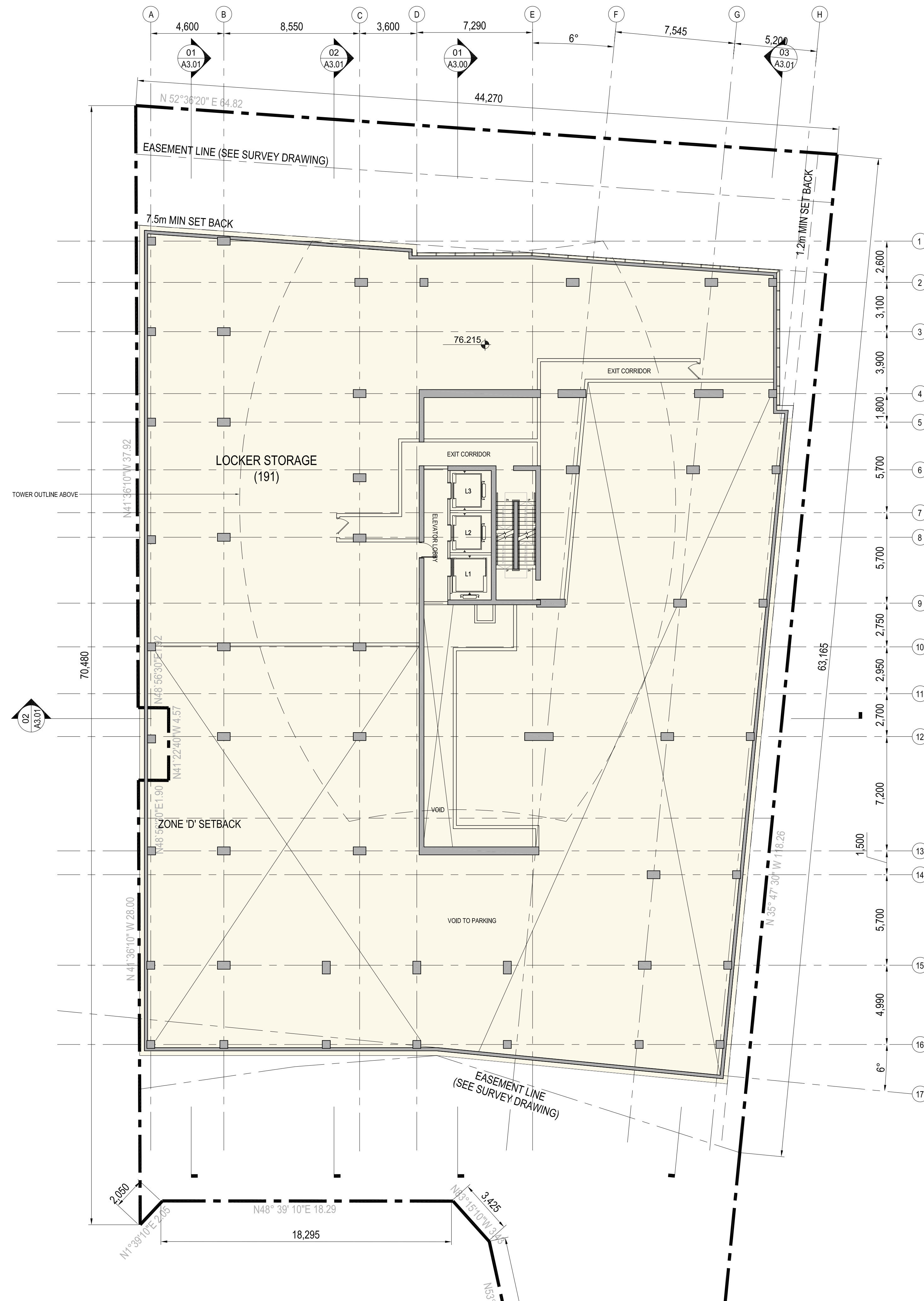
MINTO COMMUNITIES INC.

200-180 KENT ST. OTTAWA, ON, K1P 0B6

PODIUM LEVEL 3 (L3)
FLOOR PLAN

XX-SS	project number
2012.07.27	date
1:150 @ ARCH D	scale
	drawn by
	sheet

A2.03



1. Copyright of this drawing is reserved by the Architect. The drawing, and all associated documents are instruments of service by the Architect. The drawing, and the information contained therein, may not be reproduced in whole or in part without prior written permission of the Architect.
2. These Contract Documents are the property of the Architect. The Architect bears no responsibility for the interpretation of these documents by the Contractor. Upon written application the Architect will provide written/graphic clarification or supplementary information regarding the intent of the Contract Documents. The Architect will review Shop Drawings submitted by the Contractor for design conformance only.
3. Drawings are not to be scaled for construction. The Contractor is to verify all existing conditions and dimensions required to perform the work and report and discrepancies with the Contract Documents to the Architect before commencing any work.
4. Positions of exposed finishes for mechanical or electrical devices, fitting and fixtures are indicated on architectural drawings. The location shown on the architectural drawing govern over the mechanical and electrical drawings. Those items not clearly located will be located as directed by the Architect.
5. These drawings are not to be used for construction unless noted below as "Issued for Construction".
6. All work is to be carried out in conformance with the Code and Bylaws of the Authorities having jurisdiction.
7. The Architect of these plans and specifications gives no warranty or representation to any party about the constructability of the building(s) represented by them. All contractors or subcontractors must satisfy themselves when bidding and at all times ensure that they can properly construct the work represented by these plans.

No.	Issuance	Date (YYYY.MM.DD)
01	SITE PLAN APPLICATION	2012.07.27



CANDEREL
WALLMANARCHITECTS

30 Duncan Street, Suite 202
Toronto, Ontario M5V 2C3
t 416 340 1870
f 416 340 1871
info@wallmanarchitects.com



485 RICHMOND ROAD
OTTAWA, ONTARIO

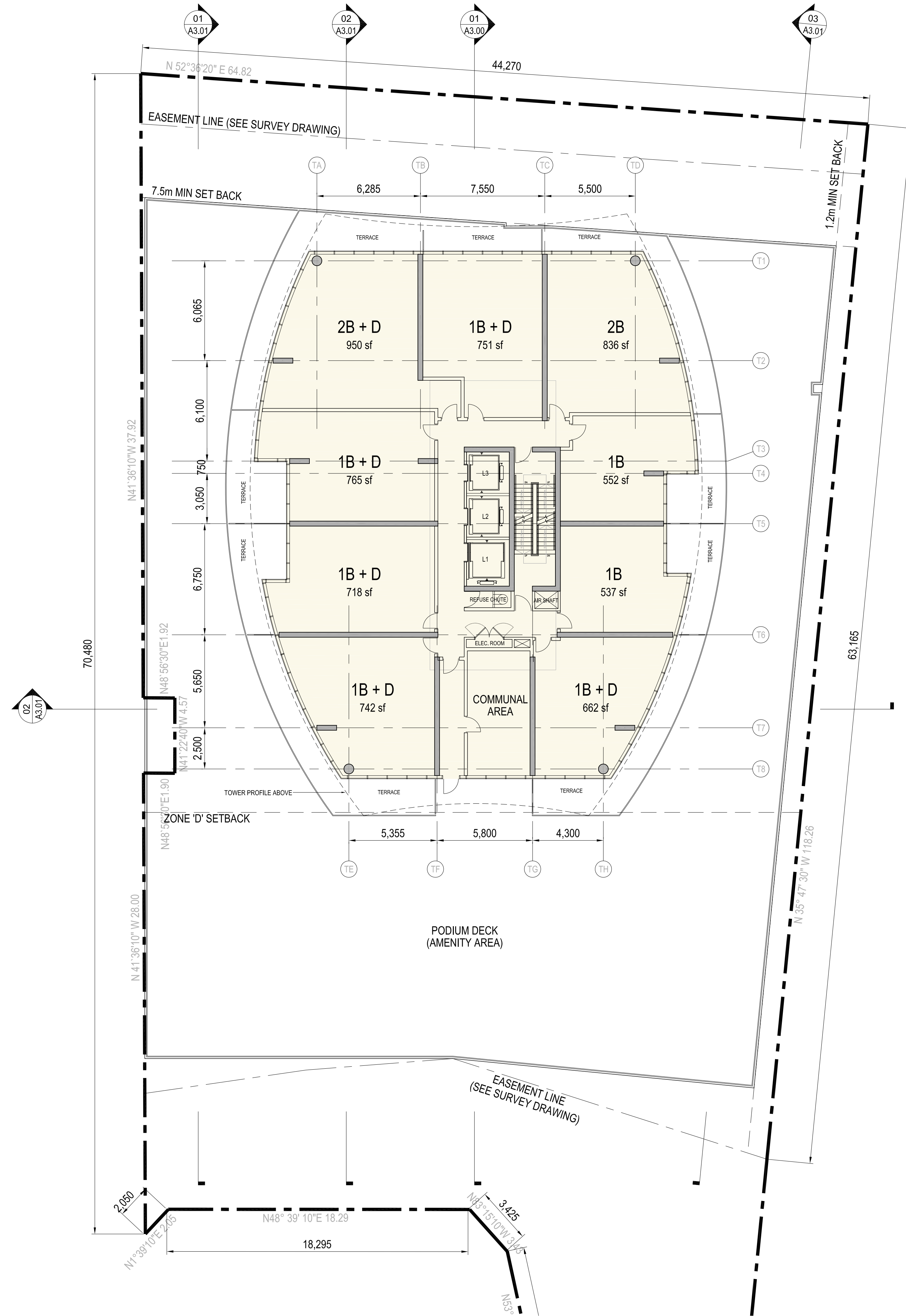
MINTO COMMUNITIES INC.

200-180 KENT ST. OTTAWA, ON, K1P 0B6

LOCKER STORAGE (L5)
FLOOR PLAN

XX-SS	project number
2012.07.27	date
1:150 @ ARCH D	scale
	drawn by
	sheet

A2.05



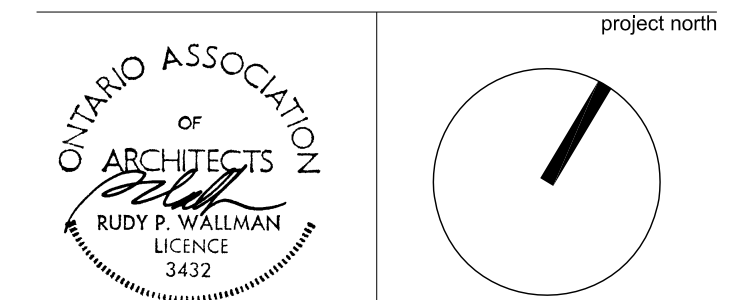
1. Copyright of this drawing is reserved by the Architect. The drawing, and all associated documents are instruments of service by the Architect. The drawing, and the information contained therein, may not be reproduced in whole or in part without prior written permission of the Architect.
2. These Contract Documents are the property of the Architect. The Architect bears no responsibility for the interpretation of these documents by the Contractor. Upon written application the Architect will provide written clarification or supplementary information regarding the intent of the Contract Documents. The Architect will review Shop Drawings submitted by the Contractor for design conformance only.
3. Drawings are not to be scaled for construction. The Contractor is to verify all existing conditions and dimensions required to perform the work and report and discrepancies with the Contract Documents to the Architect before commencing any work.
4. Positions of exposed finishes for mechanical or electrical devices, fitting and fixtures are indicated on architectural drawings. The location shown on the architectural drawing govern over the mechanical and electrical drawings. Those items not clearly located will be located as directed by the Architect.
5. These drawings are not to be used for construction unless noted below as "Issued for Construction".
6. All work is to be carried out in conformance with the Code and Bylaws of the Authorities having jurisdiction.
7. The Architect of these plans and specifications gives no warranty or representation to any party about the constructability of the building(s) represented by them. All contractors or subcontractors must satisfy themselves when bidding and at all times ensure that they can properly construct the work represented by these plans.

No.	Issuance	Date (YYYY.MM.DD)
01	SITE PLAN APPLICATION	2012.07.27



CANDEREL
WALLMANARCHITECTS

30 Duncan Street, Suite 202
 Toronto, Ontario M5V 2C3
 t 416 340 1870
 f 416 340 1871
 info@wallmanarchitects.com



485 RICHMOND ROAD
 OTTAWA, ONTARIO

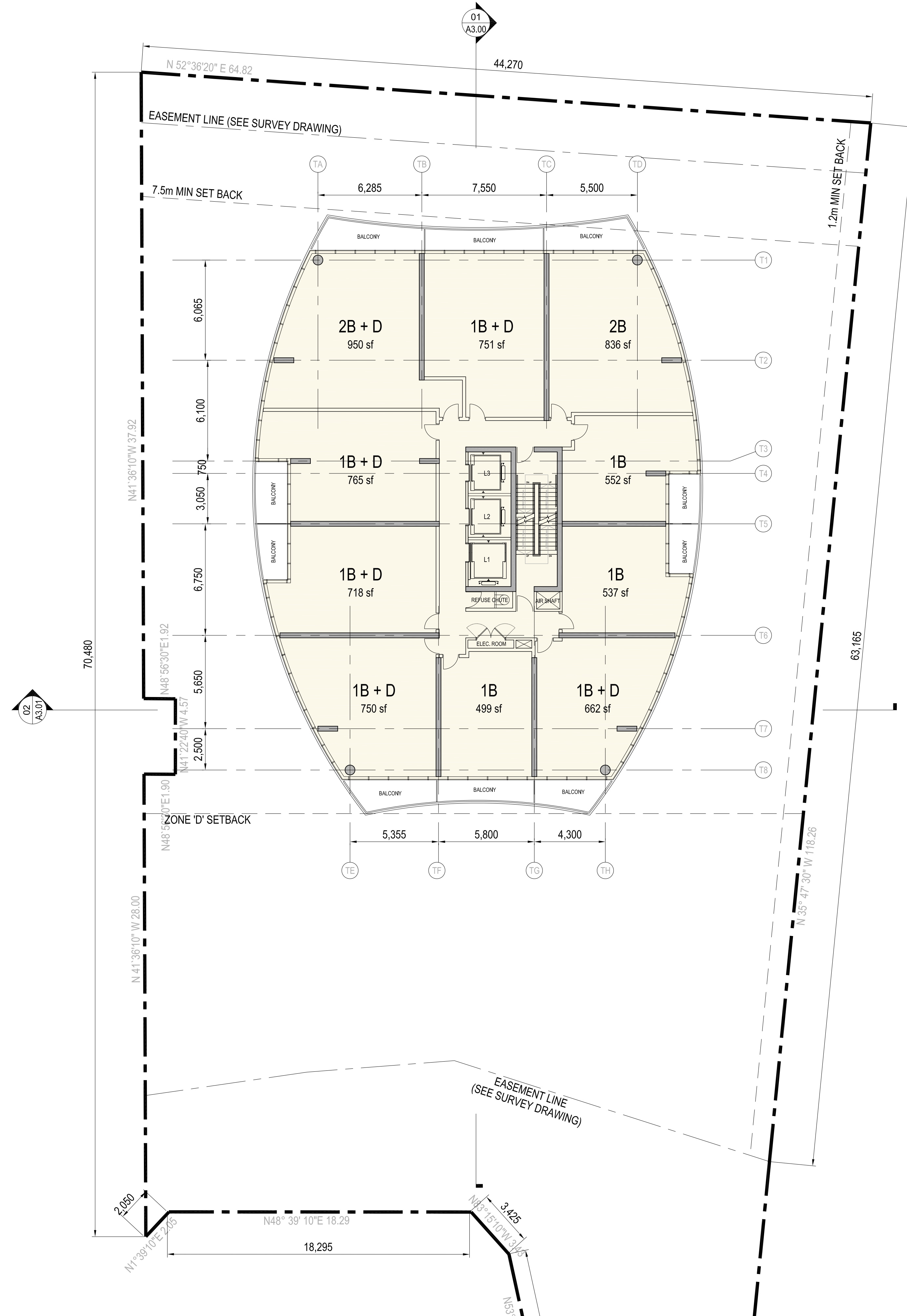
MINTO COMMUNITIES INC.

200-180 KENT ST. OTTAWA, ON, K1P 0B6

PODIUM DECK LEVEL (L6)
 FLOOR PLAN

XX-SS	project number
2012.07.27	date
1:150 @ ARCH D	scale
	drawn by
	sheet

A2.06



1. Copyright of this drawing is reserved by the Architect. The drawing, and all associated documents are instruments of service by the Architect. The drawing, and the information contained therein, may not be reproduced in whole or in part without prior written permission of the Architect.

2. These Contract Documents are the property of the Architect. The Architect bears no responsibility for the interpretation of these documents by the Contractor. Upon written application the Architect will provide written clarification or supplementary information regarding the intent of the Contract Documents. The Architect will review Shop Drawings submitted by the Contractor for design conformance only.

3. Drawings are not to be scaled for construction. The Contractor is to verify all existing conditions and dimensions required to perform the work and report and discrepancies with the Contract Documents to the Architect before commencing any work.

4. Positions of exposed finishes for mechanical or electrical devices, fitting and fixtures are indicated on architectural drawings. The location shown on the architectural drawing governs over the mechanical and electrical drawings. Those items not clearly located will be located as directed by the Architect.

5. These drawings are not to be used for construction unless noted below as "Issued for Construction".

6. All work is to be carried out in conformance with the Code and Bylaws of the Authorities having jurisdiction.

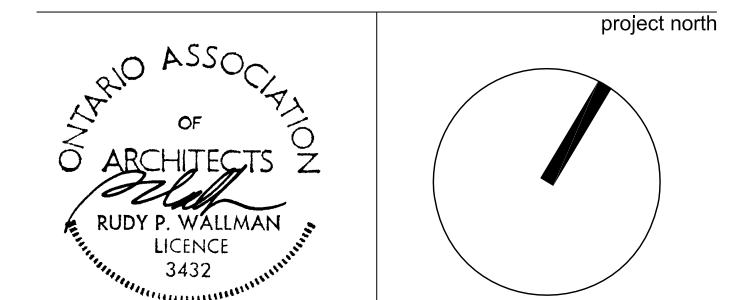
7. The Architect of these plans and specifications gives no warranty or representation to any party about the constructability of the building(s) represented by them. All contractors or subcontractors must satisfy themselves when bidding and at all times ensure that they can properly construct the work represented by these plans.

No. Issuance Date (YYYY-MM-DD)
01 SITE PLAN APPLICATION 2012.07.27



CANDEREL
WALLMANARCHITECTS

30 Duncan Street, Suite 202
Toronto, Ontario M5V 2C3
t 416 340 1870
f 416 340 1871
info@wallmanarchitects.com



485 RICHMOND ROAD
OTTAWA, ONTARIO

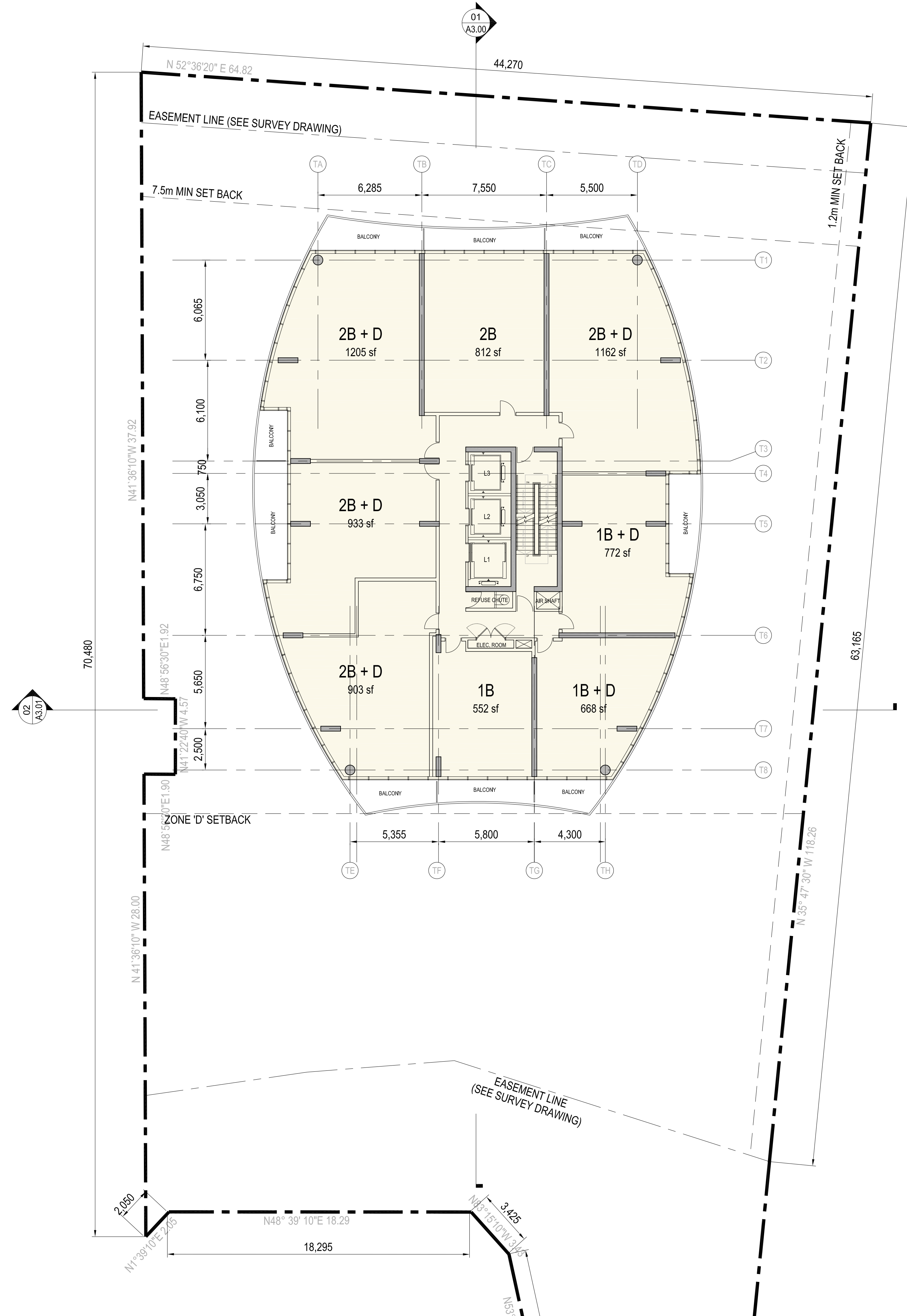
MINTO COMMUNITIES INC.

200-180 KENT ST. OTTAWA, ON, K1P 0B6

TYP. TOWER LEVEL (L7 - 21)
FLOOR PLAN

XX-SS project number
2012.07.27 date
1:150 @ ARCH D scale
drawn by
sheet

A2.07



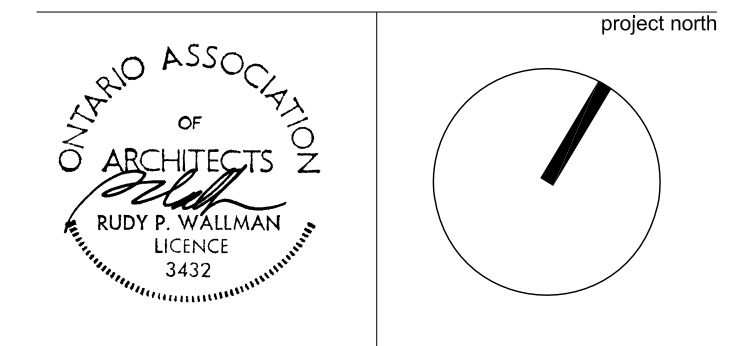
- Copyright of this drawing is reserved by the Architect. The drawing, and all associated documents are instruments of service by the Architect. The drawing, and the information contained therein, may not be reproduced in whole or in part without prior written permission of the Architect.
- These Contract Documents are the property of the Architect. The Architect bears no responsibility for the interpretation of these documents by the Contractor. Upon written application the Architect will provide written clarification or supplementary information regarding the intent of the Contract Documents. The Architect will review Shop Drawings submitted by the Contractor for design conformance only.
- Drawings are not to be scaled for construction. The Contractor is to verify all existing conditions and dimensions required to perform the work and report and discrepancies with the Contract Documents to the Architect before commencing any work.
- Positions of exposed finishes for mechanical or electrical devices, fitting and fixtures are indicated on architectural drawings. The location shown on the architectural drawing govern over the mechanical and electrical drawings. Those items not clearly located will be located as directed by the Architect.
- These drawings are not to be used for construction unless noted below as "Issued for Construction".
- All work is to be carried out in conformance with the Code and Bylaws of the Authorities having jurisdiction.
- The Architect of these plans and specifications gives no warranty or representation to any party about the constructability of the building(s) represented by them. All contractors or subcontractors must satisfy themselves when bidding and at all times ensure that they can properly construct the work represented by these plans.

No.	Issuance	Date (YYYY.MM.DD)
01	SITE PLAN APPLICATION	2012.07.27



CANDEREL
WALLMANARCHITECTS

30 Duncan Street, Suite 202
Toronto, Ontario M5V 2C3
t 416 340 1870
f 416 340 1871
info@wallmanarchitects.com



485 RICHMOND ROAD
OTTAWA, ONTARIO

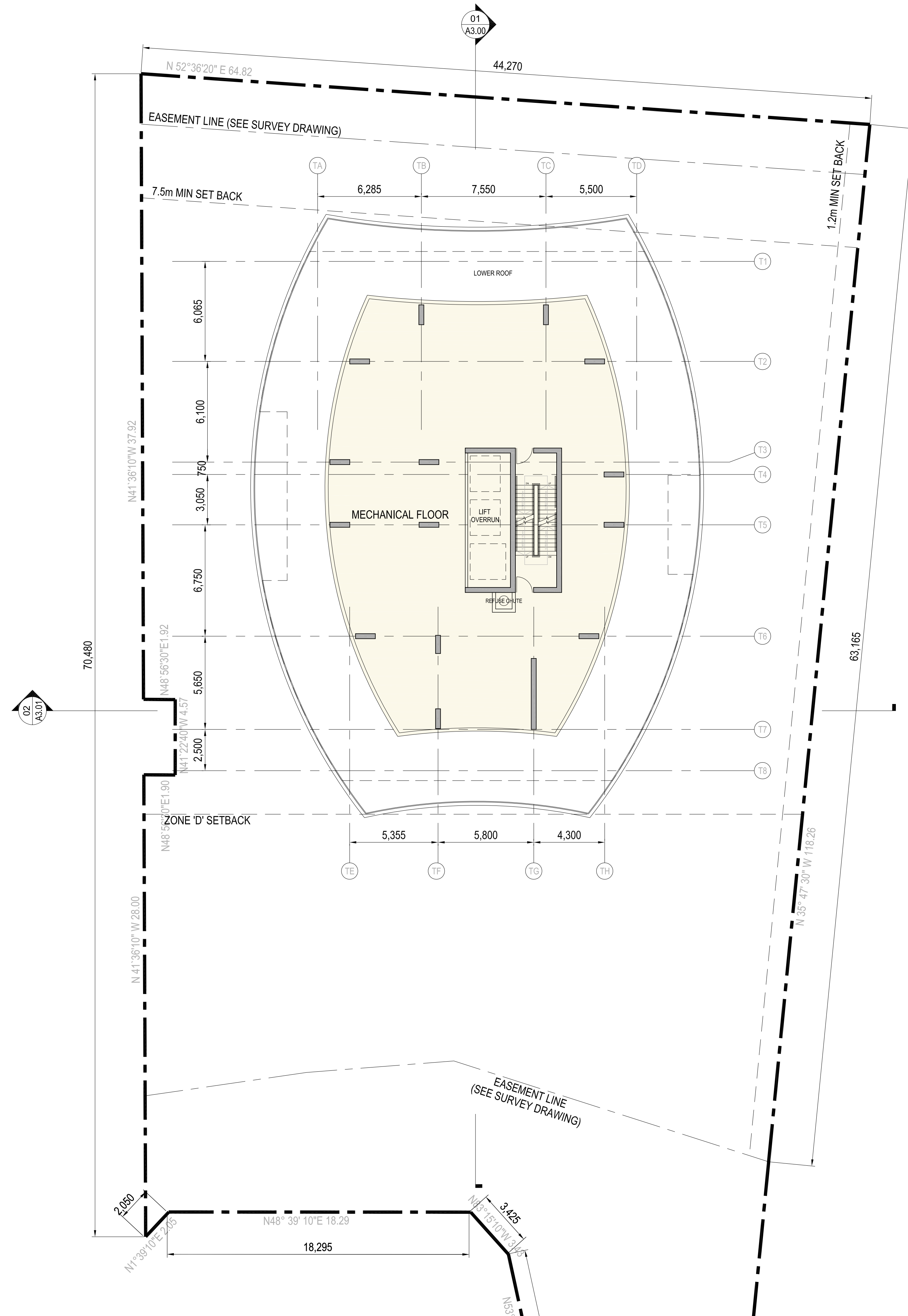
MINTO COMMUNITIES INC.

200-180 KENT ST. OTTAWA, ON, K1P 0B6

TYP. UPPER TOWER LEVEL (L22-25)
FLOORPLAN

XX-SS	project number
2012.07.27	date
1:150 @ ARCH D	scale
	drawn by
	sheet

A2.08



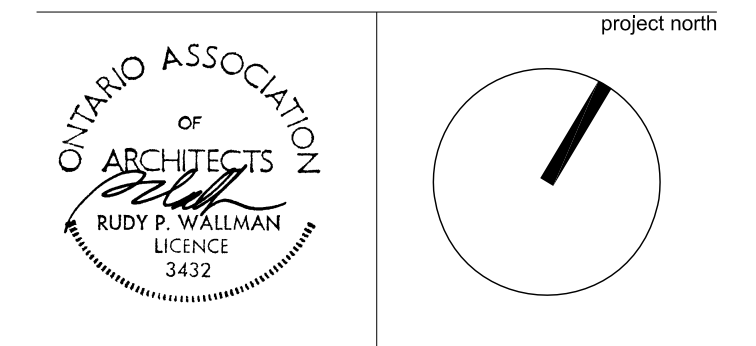
- Copyright of this drawing is reserved by the Architect. The drawing, and all associated documents are instruments of service by the Architect. The drawing, and the information contained therein, may not be reproduced in whole or in part without prior written permission of the Architect.
- These Contract Documents are the property of the Architect. The Architect bears no responsibility for the interpretation of these documents by the Contractor. Upon written application the Architect will provide written clarification or supplementary information regarding the intent of the Contract Documents. The Architect will review Shop Drawings submitted by the Contractor for design conformance only.
- Drawings are not to be scaled for construction. The Contractor is to verify all existing conditions and dimensions required to perform the work and report and discrepancies with the Contract Documents to the Architect before commencing any work.
- Positions of exposed finishes for mechanical or electrical devices, fitting and fixtures are indicated on architectural drawings. The location shown on the architectural drawing govern over the mechanical and electrical drawings. Those items not clearly located will be located as directed by the Architect.
- These drawings are not to be used for construction unless noted below as "Issued for Construction".
- All work is to be carried out in conformance with the Code and Bylaws of the Authorities having jurisdiction.
- The Architect of these plans and specifications gives no warranty or representation to any party about the constructability of the building(s) represented by them. All contractors or subcontractors must satisfy themselves when bidding and at all times ensure that they can properly construct the work represented by these plans.

No.	Issuance	Date (YYYY.MM.DD)
01	SITE PLAN APPLICATION	2012.07.27



CANDEREL
WALLMANARCHITECTS

30 Duncan Street, Suite 202
Toronto, Ontario M5V 2C3
t 416 340 1870
f 416 340 1871
info@wallmanarchitects.com



485 RICHMOND ROAD
OTTAWA, ONTARIO

MINTO COMMUNITIES INC.

200-180 KENT ST. OTTAWA, ON, K1P 0B6

**MECHANICAL FLOOR (L26)
FLOOR PLAN**

XX-SS	project number
2012.07.27	date
1:150 @ ARCH D	scale
	drawn by
	sheet

A2.09

1. Copyright of this drawing is reserved by the Architect. The drawing, and all associated documents are instruments of service by the Architect. The drawing, and the information contained therein, may not be reproduced in whole or in part without prior written permission of the Architect.

2. These Contract Documents are the property of the Architect. The Architect bears no responsibility for the interpretation of these documents by the Contractor. Upon written application the Architect will provide written clarification or supplementary information regarding the intent of the Contract Documents. The Architect will review Shop Drawings submitted by the Contractor for design conformance only.

3. Drawings are not to be scaled for construction. The Contractor is to verify all existing conditions and dimensions required to perform the work and report and discrepancies with the Contract Documents to the Architect before commencing any work.

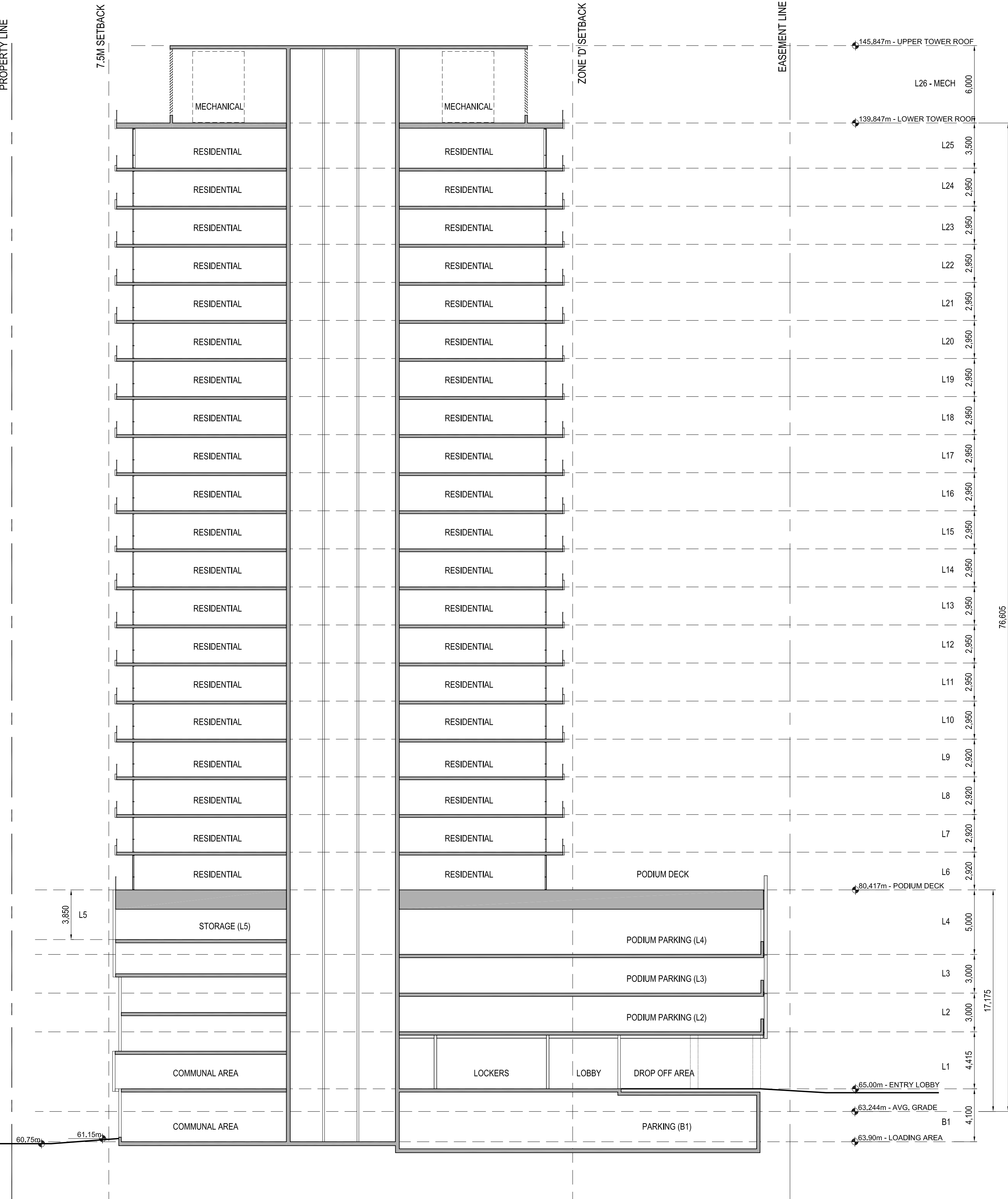
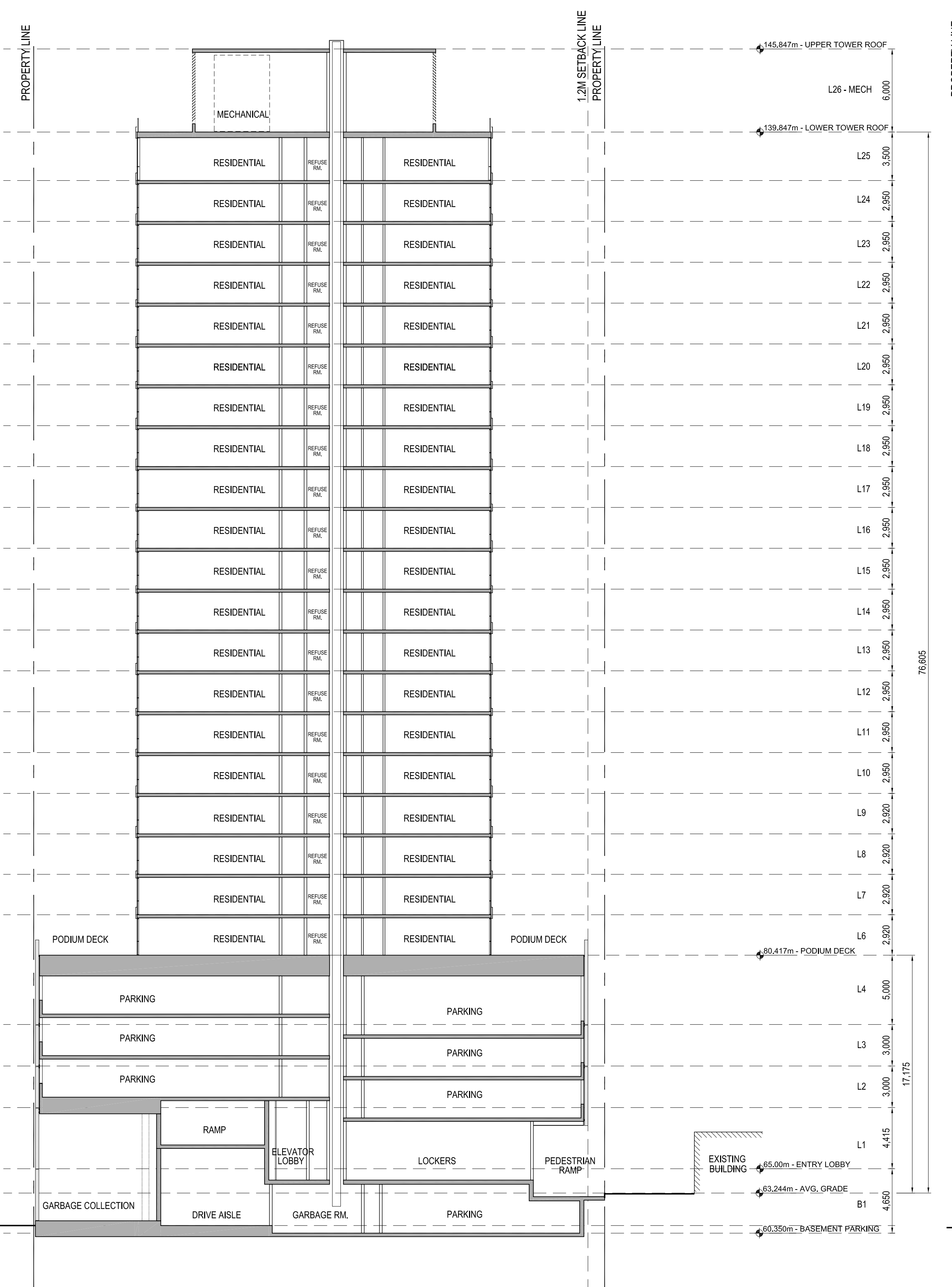
4. Positions of exposed finishes for mechanical or electrical devices, fitting and fixtures are indicated on architectural drawings. The location shown on the architectural drawing governs over the mechanical and electrical drawings. Those items not clearly located will be located as directed by the Architect.

5. These drawings are not to be used for construction unless noted below as "Issued for Construction".

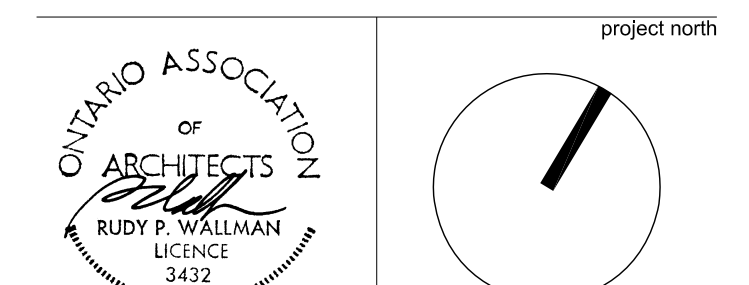
6. All work is to be carried out in conformance with the Code and Bylaws of the Authorities having jurisdiction.

7. The Architect of these plans and specifications gives no warranty or representation to any party about the constructability of the building(s) represented by them. All contractors or subcontractors must satisfy themselves when bidding and at all times ensure that they can properly construct the work represented by these plans.

No. Issuance Date (YYYY.MM.DD)
01 SITE PLAN APPLICATION 2012.07.27



30 Duncan Street, Suite 202
Toronto, Ontario M5V 2C3
t 416 340 1870
f 416 340 1871
info@wallmanarchitects.com



485 RICHMOND ROAD
OTTAWA, ONTARIO

MINTO COMMUNITIES INC.

200-180 KENT ST. OTTAWA, ON, K1P 0B6

TOWER SECTIONS

XX-SS project number
2012.07.27 date
1:150 @ ARCH D scale
drawn by sheet

A3.00

1. Copyright of this drawing is reserved by the Architect. The drawing, and all associated documents are instruments of service by the Architect. The drawing, and the information contained therein, may not be reproduced in whole or in part without prior written permission of the Architect.

2. These Contract Documents are the property of the Architect. The Architect bears no responsibility for the interpretation of these documents by the Contractor. Upon written application the Architect will provide written clarification or supplementary information regarding the intent of the Contract Documents. The Architect will review Shop Drawings submitted by the Contractor for design conformance only.

3. Drawings are not to be scaled for construction. The Contractor is to verify all existing conditions and dimensions required to perform the work and report and discrepancies with the Contract Documents to the Architect before commencing any work.

4. Positions of exposed finishes for mechanical or electrical devices, fitting and fixtures are indicated on architectural drawings. The location shown on the architectural drawing governs over the mechanical and electrical drawings. Those items not clearly located will be located as directed by the Architect.

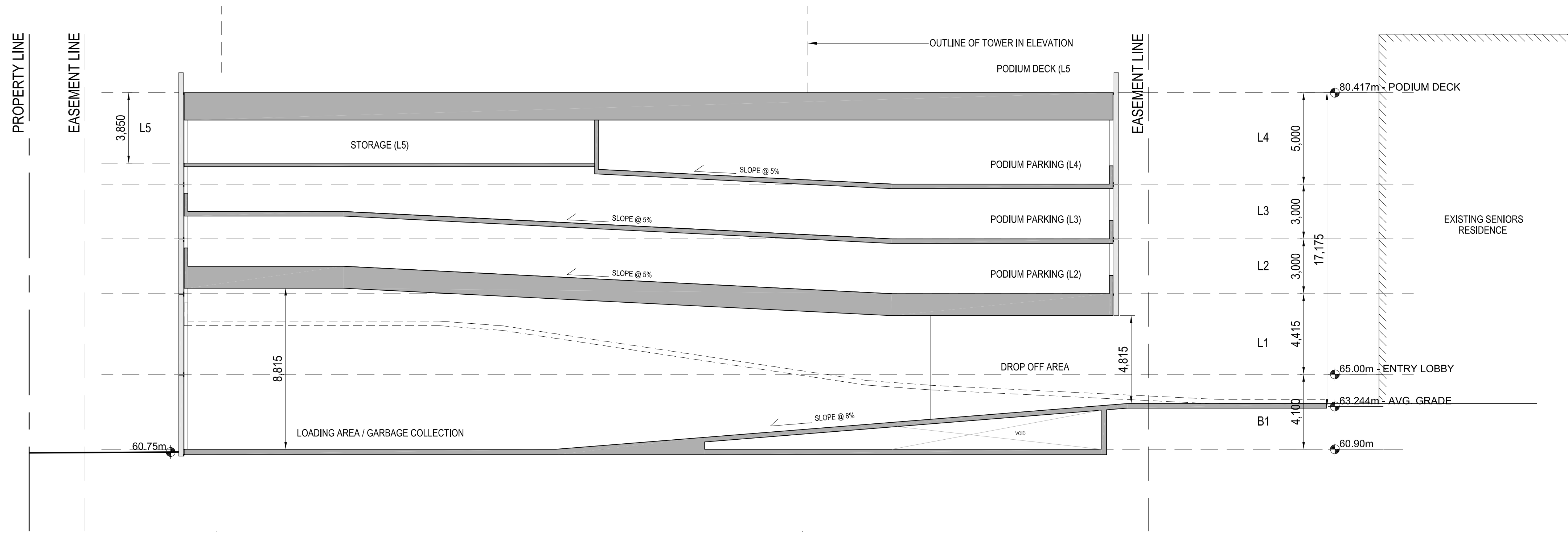
5. These drawings are not to be used for construction unless noted below as "Issued for Construction".

6. All work is to be carried out in conformance with the Code and Bylaws of the Authorities having jurisdiction.

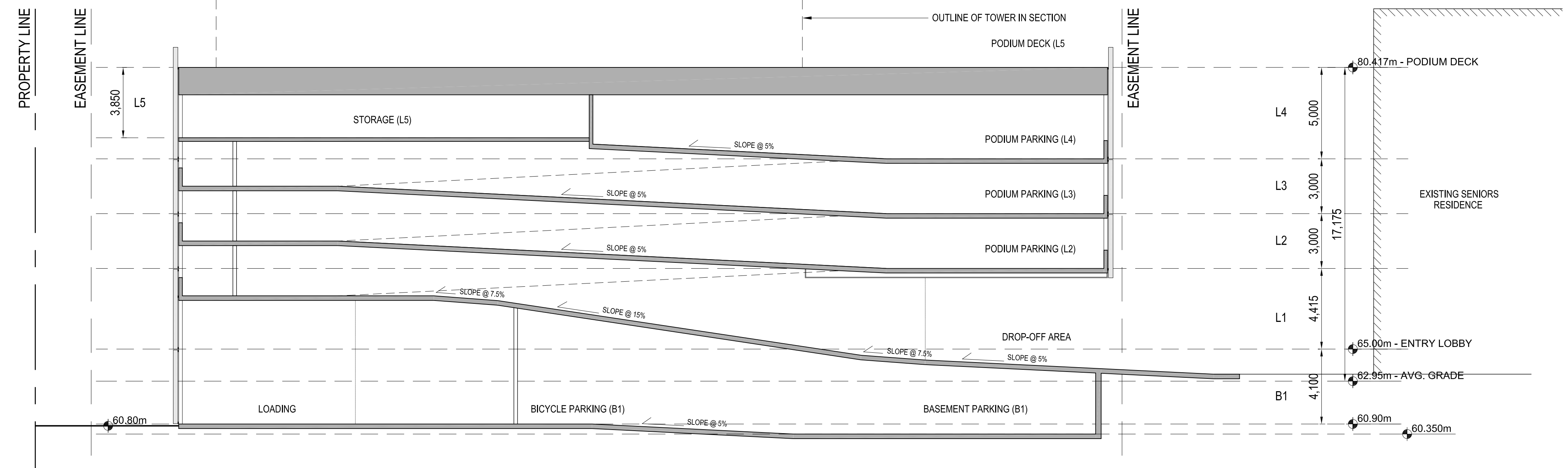
7. The Architect of these plans and specifications gives no warranty or representation to any party about the constructability of the building(s) represented by them. All contractors or subcontractors must satisfy themselves when bidding and at all times ensure that they can properly construct the work represented by these plans.

No. Issuance Date (YYYY-MM-DD)
01 SITE PLAN APPLICATION 2012.07.27

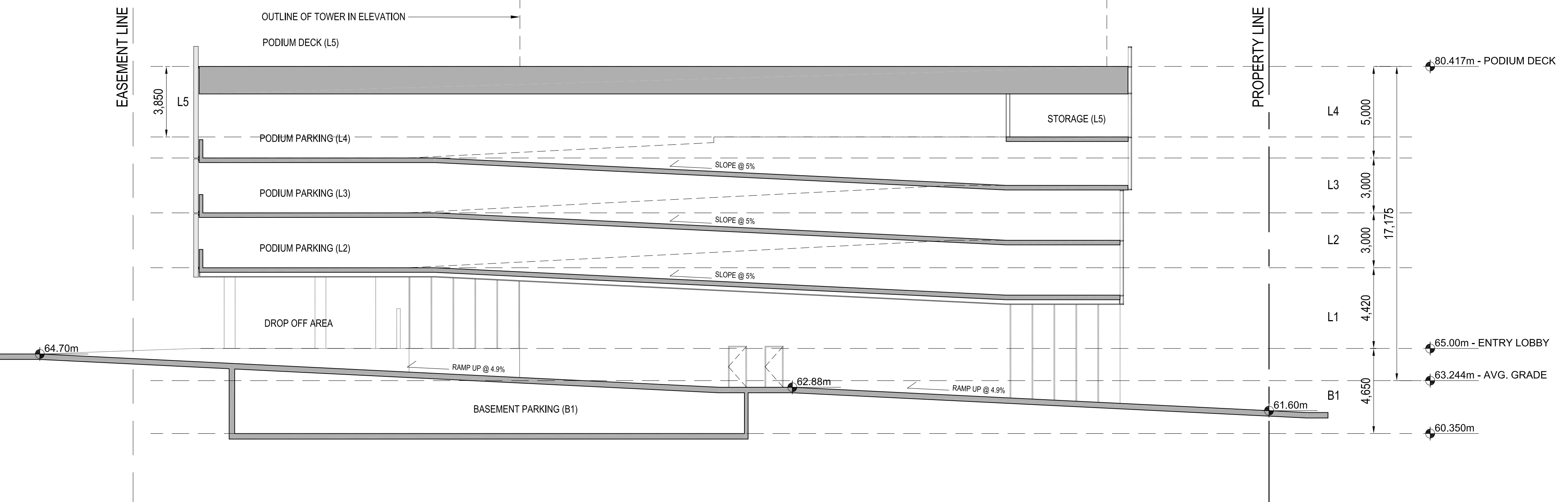
01 SECTION 03
SCALE: 1/150



02 SECTION 04
SCALE: 1/150

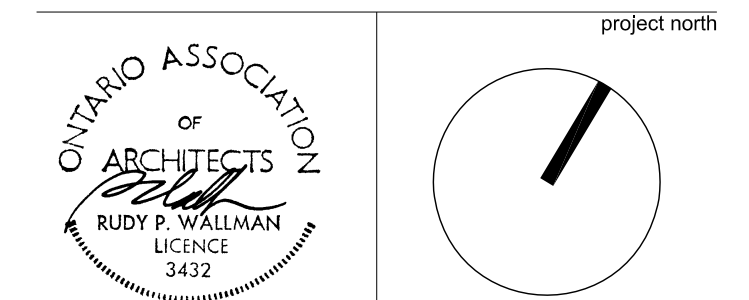


03 SECTION 05
SCALE: 1/150



WALLMANARCHITECTS

30 Duncan Street, Suite 202
Toronto, Ontario M5V 2C3
t 416 340 1870
f 416 340 1871
info@wallmanarchitects.com



485 RICHMOND ROAD
OTTAWA, ONTARIO

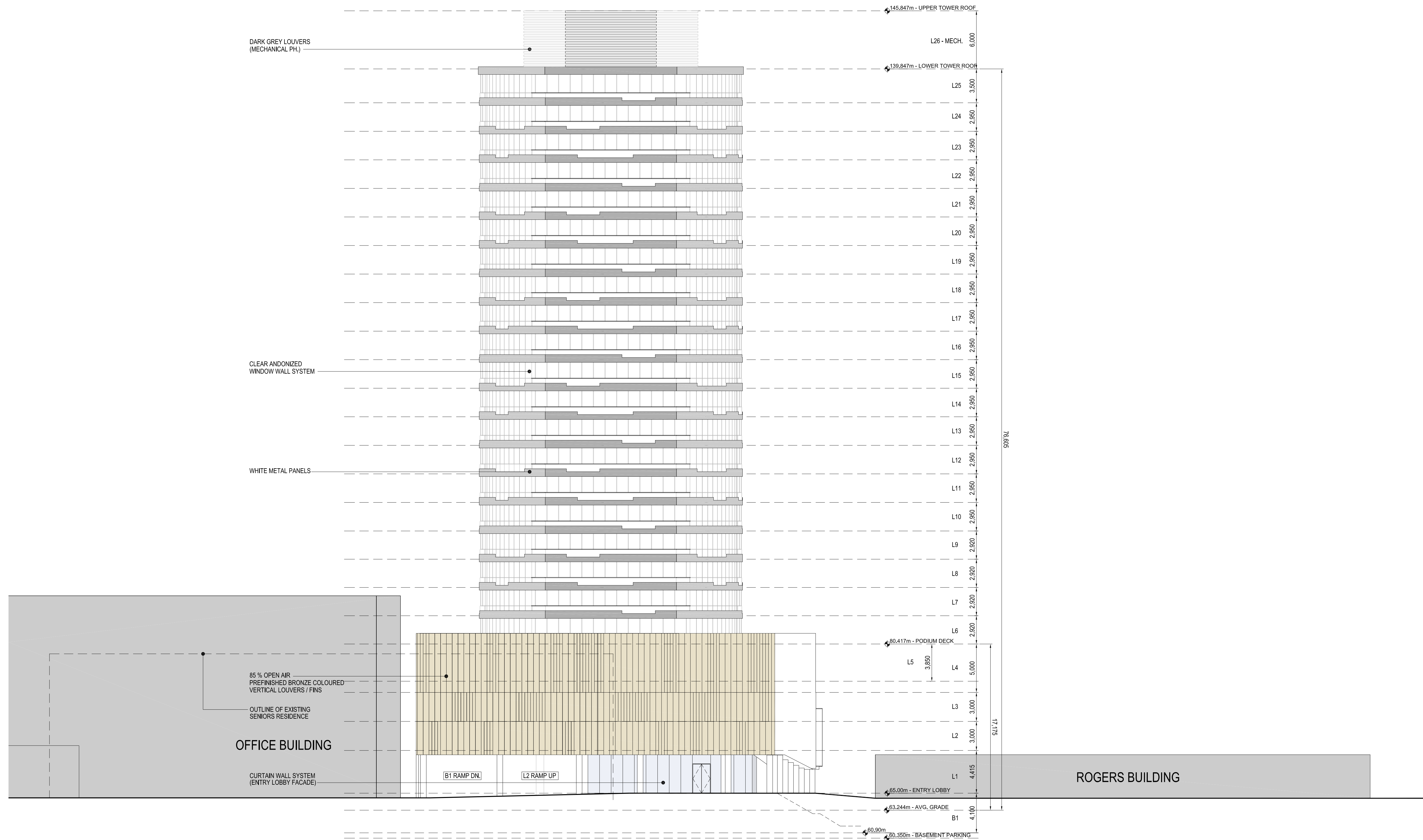
MINTO COMMUNITIES INC.

200-180 KENT ST. OTTAWA, ON, K1P 0B6

PODIUM SECTIONS

XX-SS project number
2012.07.27 date
1:150 @ ARCH D scale
drawn by
sheet

A3.01



01 RICHMOND ROAD (SOUTH) ELEVATION
SCALE: 1/200

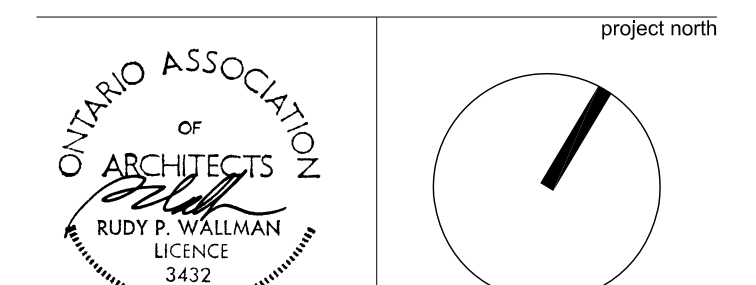
- Copyright of this drawing is reserved by the Architect. The drawing, and all associated documents are instruments of service by the Architect. The drawing, and the information contained therein, may not be reproduced in whole or in part without prior written permission of the Architect.
- These Contract Documents are the property of the Architect. The Architect bears no responsibility for the interpretation of these documents by the Contractor. Upon written application the Architect will provide written clarification or supplementary information regarding the intent of the Contract Documents. The Architect will review Shop Drawings submitted by the Contractor for design conformance only.
- Drawings are not to be scaled for construction. The Contractor is to verify all existing conditions and dimensions required to perform the work and report and discrepancies with the Contract Documents to the Architect before commencing any work.
- Positions of exposed finishes for mechanical or electrical devices, fitting and fixtures are indicated on architectural drawings. The location shown on the architectural drawing governs over the mechanical and electrical drawings. Those items not clearly located will be located as directed by the Architect.
- These drawings are not to be used for construction unless noted below as "Issued for Construction".
- All work is to be carried out in conformance with the Code and Bylaws of the Authorities having jurisdiction.
- The Architect of these plans and specifications gives no warranty or representation to any party about the constructability of the building(s) represented by them. All contractors or subcontractors must satisfy themselves when bidding and at all times ensure that they can properly construct the work represented by these plans.

No.	Issuance	Date (YYYY.MM.DD)
01	SITE PLAN APPLICATION	2012.07.27



CANDEREL
WALLMANARCHITECTS

30 Duncan Street, Suite 202
Toronto, Ontario M5V 2C3
t 416 340 1870
f 416 340 1871
info@wallmanarchitects.com



485 RICHMOND ROAD
OTTAWA, ONTARIO

MINTO COMMUNITIES INC.

200-180 KENT ST. OTTAWA, ON, K1P 0B6

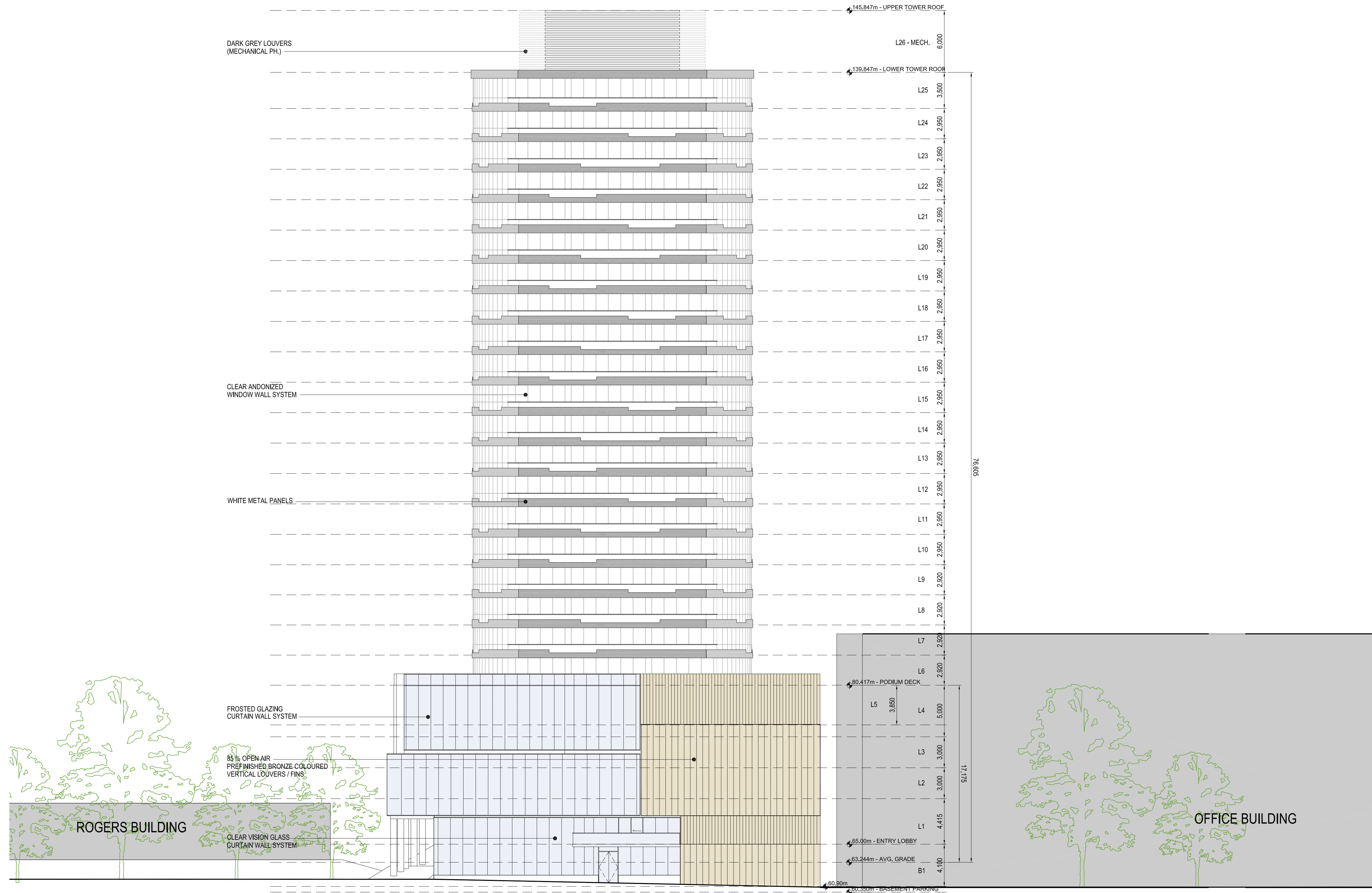
ELEVATION

XX-SS	project number
2012.07.27	date
1:200 @ ARCH D	scale
	drawn by
	sheet

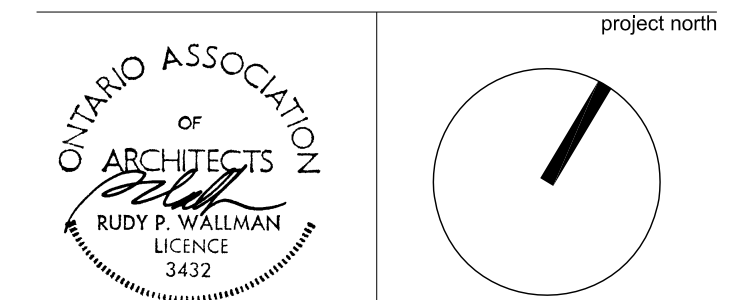
A4.00

1. Copyright of this drawing is reserved by the Architect. The drawing, and all associated documents are instruments of service by the Architect. The drawing, and the information contained therein, may not be reproduced in whole or in part without prior written permission of the Architect.
2. These Contract Documents are the property of the Architect. The Architect bears no responsibility for the interpretation of these documents by the Contractor. Upon written application the Architect will provide written/graphic clarification or supplementary information regarding the intent of the Contract Documents. The Architect will review Shop Drawings submitted by the Contractor for design conformance only.
3. Drawings are not to be scaled for construction. The Contractor is to verify all existing conditions and dimensions required to perform the work and report and discrepancies with the Contract Documents to the Architect before commencing any work.
4. Positions of exposed finishes for mechanical or electrical devices, fitting and fixtures are indicated on architectural drawings. The location shown on the architectural drawing govern over the mechanical and electrical drawings. Those items not clearly located will be located as directed by the Architect.
5. These drawings are not to be used for construction unless noted below as "Issued for Construction".
6. All work is to be carried out in conformance with the Code and Bylaws of the Authorities having jurisdiction.
7. The Architect of these plans and specifications gives no warranty or representation to any party about the constructability of the building(s) represented by them. All contractors or subcontractors must satisfy themselves when bidding and at all times ensure that they can properly construct the work represented by these plans.

No.	Issuance	Date (YYYY.MM.DD)
01	SITE PLAN APPLICATION	2012.07.27



30 Duncan Street, Suite 202
Toronto, Ontario M5V 2C3
t 416 340 1870
f 416 340 1871
info@wallmanarchitects.com



485 RICHMOND ROAD
OTTAWA, ONTARIO

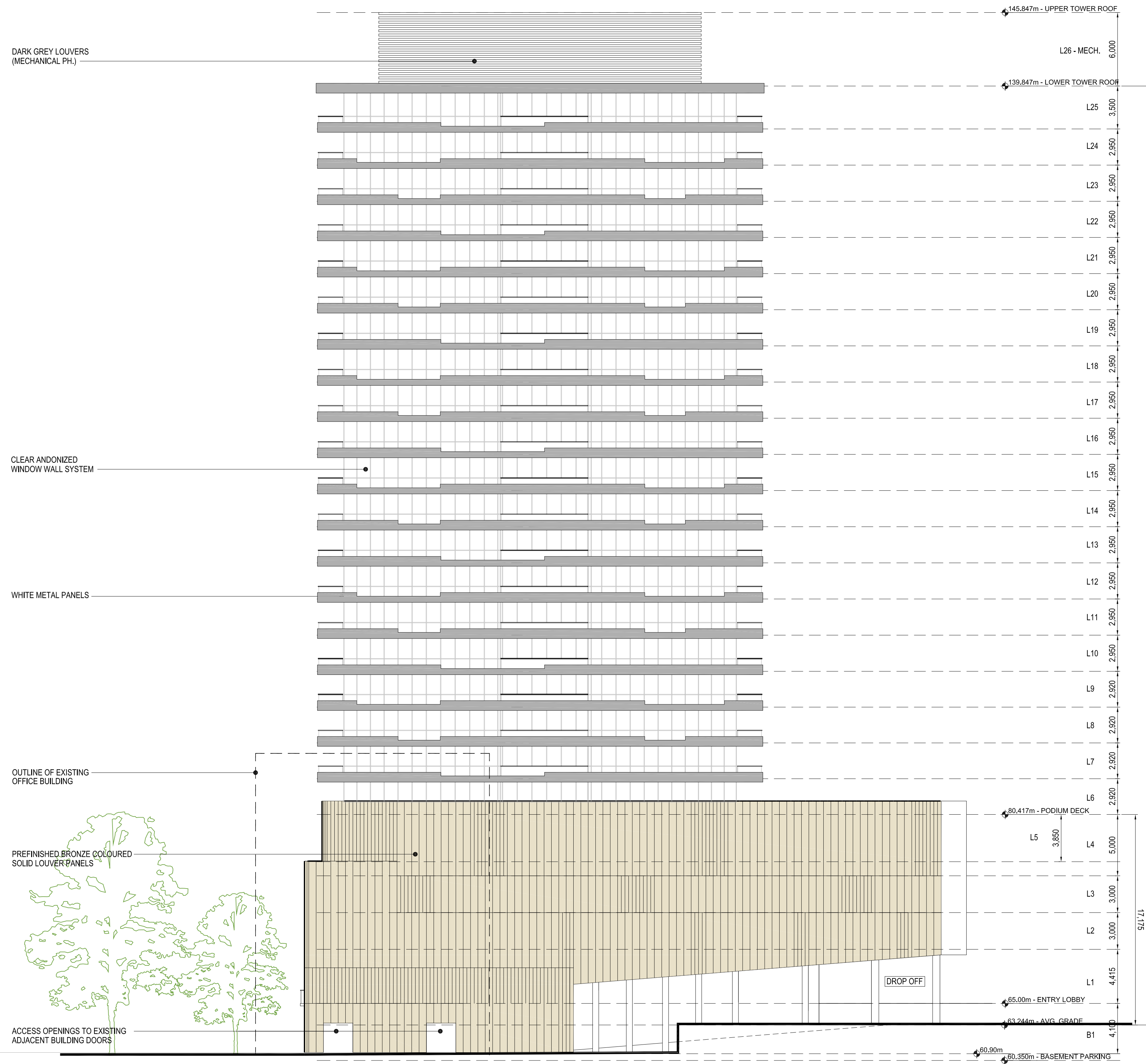
MINTO COMMUNITIES INC.

200-180 KENT ST. OTTAWA, ON, K1P 0B6

ELEVATION

XX-SS	project number
2012.07.27	date
1:200 @ ARCH D	scale
	drawn by
	sheet

A4.01

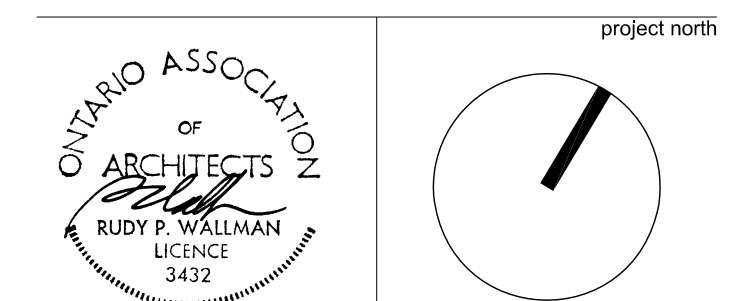


- Copyright of this drawing is reserved by the Architect. The drawing, and all associated documents are instruments of service by the Architect. The drawing, and the information contained therein, may not be reproduced in whole or in part without prior written permission of the Architect.
- These Contract Documents are the property of the Architect. The Architect bears no responsibility for the interpretation of these documents by the Contractor. Upon written application the Architect will provide written clarification or supplementary information regarding the intent of the Contract Documents. The Architect will review Shop Drawings submitted by the Contractor for design conformance only.
- Drawings are not to be scaled for construction. The Contractor is to verify all existing conditions and dimensions required to perform the work and report and discrepancies with the Contract Documents to the Architect before commencing any work.
- Positions of exposed finishes for mechanical or electrical devices, fitting and fixtures are indicated on architectural drawings. The location shown on the architectural drawing govern over the mechanical and electrical drawings. Those items not clearly located will be located as directed by the Architect.
- These drawings are not to be used for construction unless noted below as "Issued for Construction".
- All work is to be carried out in conformance with the Code and Bylaws of the Authorities having jurisdiction.
- The Architect of these plans and specifications gives no warranty or representation to any party about the constructability of the building(s) represented by them. All contractors or subcontractors must satisfy themselves when bidding and at all times ensure that they can properly construct the work represented by these plans.

No.	Issuance	Date (YYYY.MM.DD)
01	SITE PLAN APPLICATION	2012.07.27



30 Duncan Street, Suite 202
Toronto, Ontario M5V 2C3
t 416 340 1870
f 416 340 1871
info@wallmanarchitects.com



485 RICHMOND ROAD
OTTAWA, ONTARIO

MINTO COMMUNITIES INC.

200-180 KENT ST. OTTAWA, ON, K1P 0B6

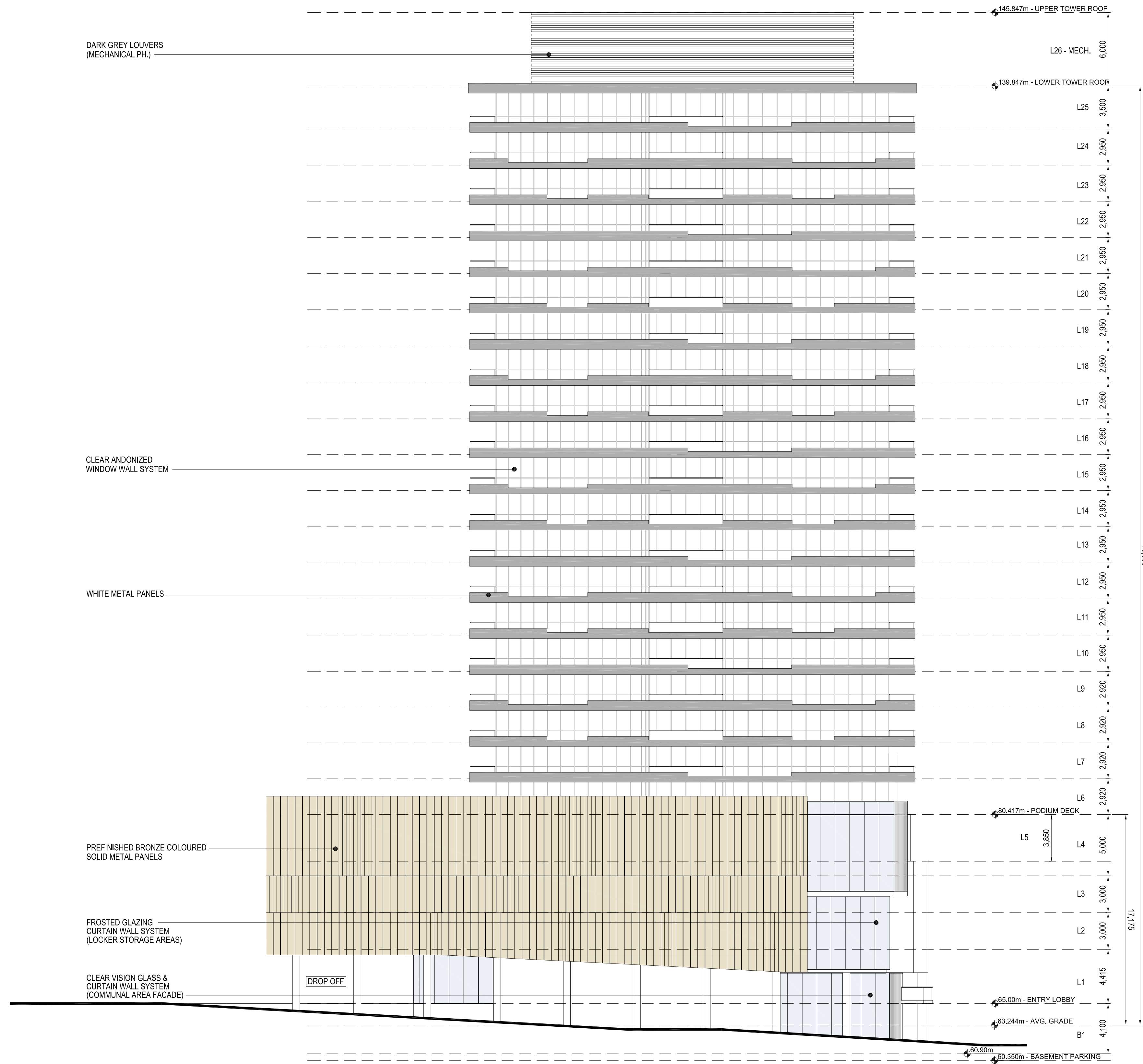
ELEVATION

XX-SS	project number
2012.07.27	date
1:200 @ ARCH D	scale
	drawn by
	sheet

A4.02

1. Copyright of this drawing is reserved by the Architect. The drawing, and all associated documents are instruments of service by the Architect. The drawing, and the information contained therein, may not be reproduced in whole or in part without prior written permission of the Architect.
2. These Contract Documents are the property of the Architect. The Architect bears no responsibility for the interpretation of these documents by the Contractor. Upon written application the Architect will provide written clarification or supplementary information regarding the intent of the Contract Documents. The Architect will review Shop Drawings submitted by the Contractor for design conformance only.
3. Drawings are not to be scaled for construction. The Contractor is to verify all existing conditions and dimensions required to perform the work and report and discrepancies with the Contract Documents to the Architect before commencing any work.
4. Positions of exposed finishes for mechanical or electrical devices, fitting and fixtures are indicated on architectural drawings. The location shown on the architectural drawing govern over the mechanical and electrical drawings. Those items not clearly located will be located as directed by the Architect.
5. These drawings are not to be used for construction unless noted below as "Issued for Construction".
6. All work is to be carried out in conformance with the Code and Bylaws of the Authorities having jurisdiction.
7. The Architect of these plans and specifications gives no warranty or representation to any party about the constructability of the building(s) represented by them. All contractors or subcontractors must satisfy themselves when bidding and at all times ensure that they can properly construct the work represented by these plans.

No.	Issuance	Date (YYYY.MM.DD)
01	SITE PLAN APPLICATION	2012.07.27

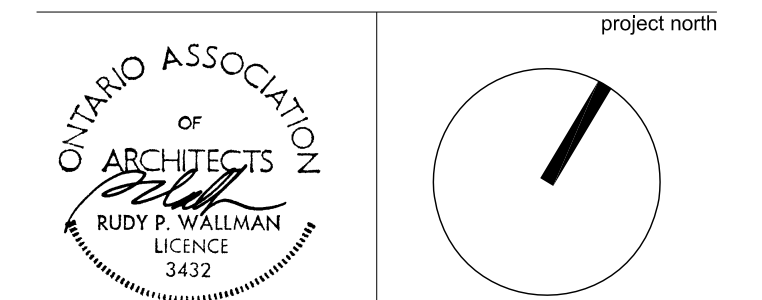


01 EAST ELEVATION
SCALE: 1/200



WALLMANARCHITECTS

30 Duncan Street, Suite 202
Toronto, Ontario M5V 2C3
t 416 340 1870
f 416 340 1871
info@wallmanarchitects.com



485 RICHMOND ROAD
OTTAWA, ONTARIO

MINTO COMMUNITIES INC.

200-180 KENT ST. OTTAWA, ON, K1P 0B6

ELEVATION

XX-SS	project number
2012.07.27	date
1:200 @ ARCH D	scale
	drawn by
	sheet

A4.03