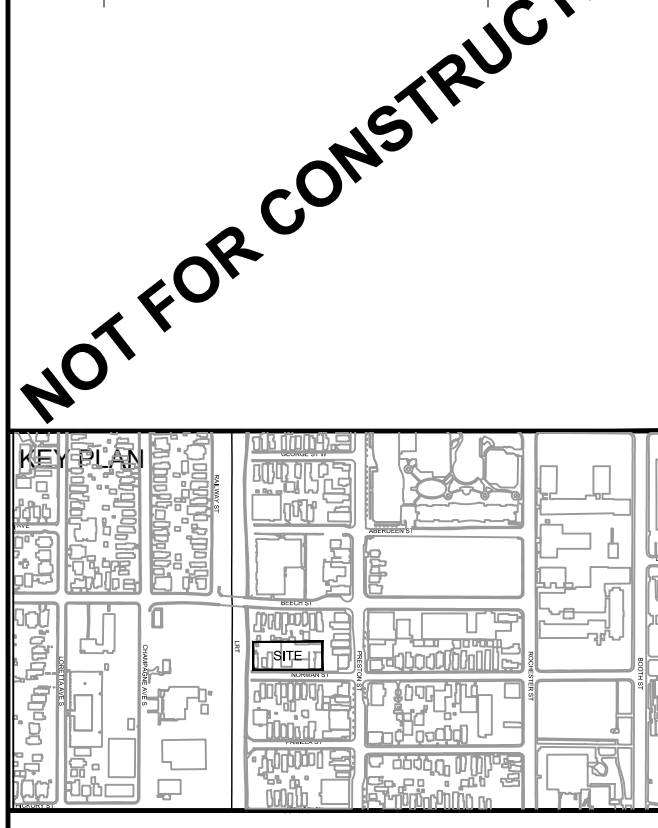


CLIENT  
**TAMARACK HOMES**

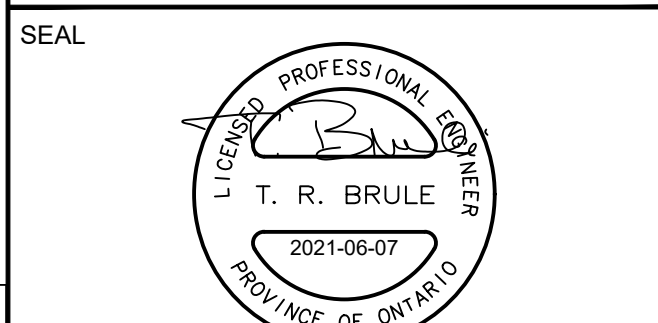
3187 ALBION ROAD SOUTH

COPYRIGHT  
This drawing has been prepared solely for the intended use. Any reproduction or distribution for any purpose other than authorized by IBI Group is forbidden. When dimensions shall have precedence over scaled dimensions, the job, and IBI Group shall be responsible for any variations from the dimensions and conditions shown on the drawing. Shop drawings shall be submitted to IBI Group for general conformance before proceeding with fabrication.  
IBI Group Professional Services (Canada) Inc.  
is a member of the IBI Group of companies.

ISSUES		
No.	DESCRIPTION	DATE
1	ISSUED FOR CITY REVIEW	2021-03-05
2	REVISED PER CITY COMMENTS	2021-03-05



CONSULTANTS  
Project Coordinator  
Tamarack Homes  
Architect:  
RLA Architecture  
Landscape:  
Lashley + Associates  
Surveyor:  
Stantec Geomatics Ltd.  
Geotech:  
Paterson Group



IBI GROUP  
Suite 400 - 333 Preston Street  
Ottawa ON K1S 5N4 Canada  
Tel: 613 225 1311 / 613 241 3300 Fax: 613 225 9868  
ibigroup.com

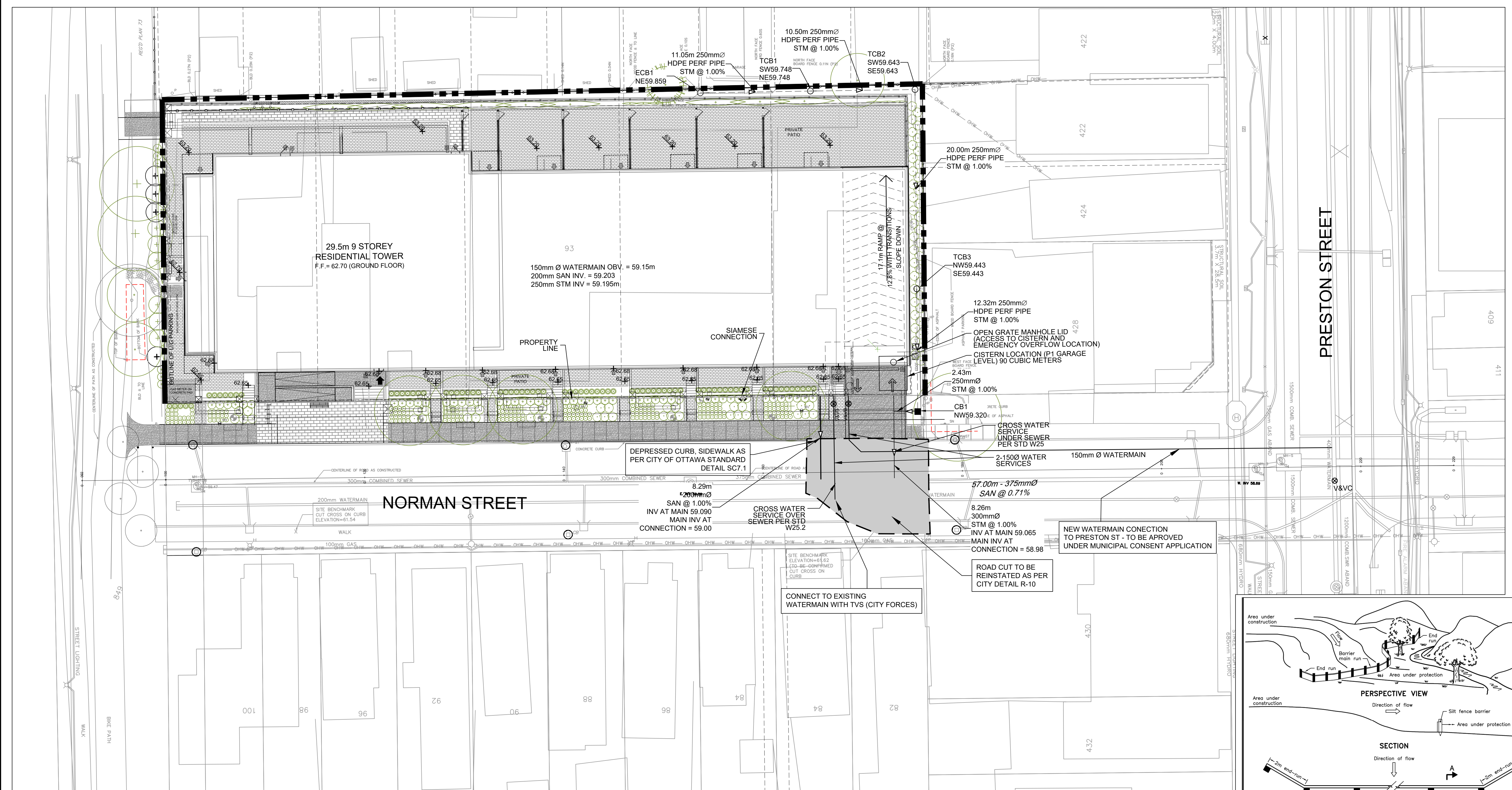
PROJECT  
**93 NORMAN STREET**

PROJECT NO:  
132469  
DRAWN BY:  
D.D.  
PROJECT MGR:  
T.R.B.  
CHECKED BY:  
J.B.  
APPROVED BY:  
T.R.B.

SHEET TITLE  
**EROSION AND  
SEDIMENTATION CONTROL  
PLAN**

SHEET NUMBER  
**C-900**  
ISSUE  
**2**

CITY PLAN No. xxxxx

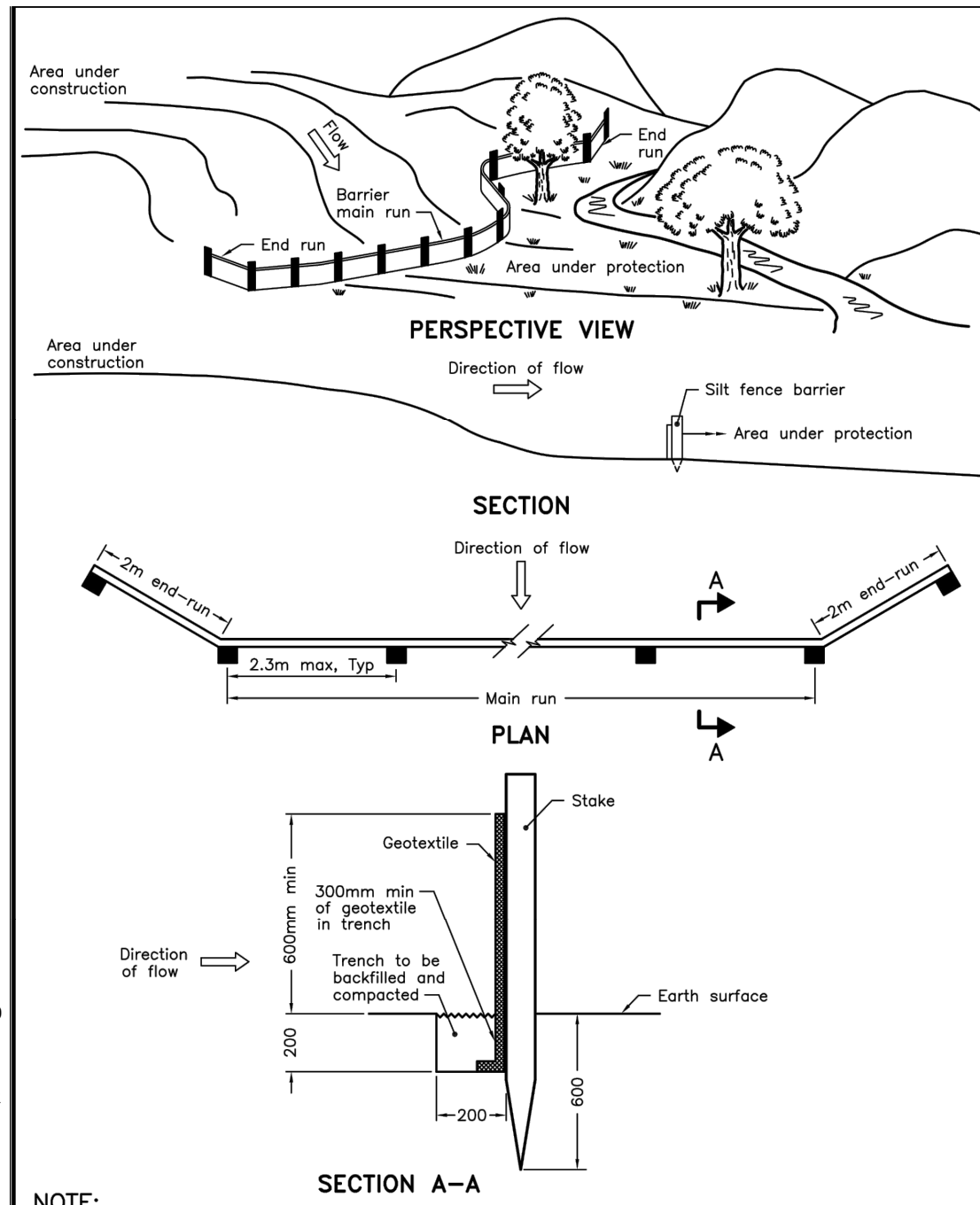


**NOTES:**

- SILT FENCE TO BE ERECTED PRIOR TO EARTH WORKS BEING COMMENCED. SILT FENCE TO BE MAINTAINED UNTIL VEGETATION IS ESTABLISHED AND CONSTRUCTION COMPLETE.
- SILT SACK TO BE PLACED AND MAINTAINED UNDER COVER OF ALL CATCHBASINS. GEOTEXTILE SILT SACK IN STREET C&S TO REMAIN UNTIL ALL CURBS ARE CONSTRUCTED. GEOTEXTILE FABRIC IN RYCBs TO REMAIN UNTIL VEGETATION IS ESTABLISHED. ALL CATCHBASINS TO BE REGULARLY INSPECTED AND CLEANED, AS NECESSARY, UNTIL SOD AND CURBS ARE CONSTRUCTED.
- CONTRACTOR TO PROVIDE DETAILS ON LOCATION(S) AND DESIGN OF DEWATERING TRAP(S) PRIOR TO COMMENCING WORK. CONTRACTOR ALSO RESPONSIBLE FOR MAINTAINING TRAP(S) AND ADJUSTING SIZE(S) IF DEEMED REQUIRED BY THE ENGINEER DURING CONSTRUCTION.

**LEGEND**

- LIGHT DUTY SILT FENCE AS PER OPSD-219.110
- SNOW FENCE
- STRAW BALE CHECK DAM AS PER OPSD-219.180
- ROCK CHECK DAM AS PER OPSD-219.210
- SILT SACK PLACED UNDER EXISTING CB COVER
- TEMPORARY MUD MAT 0.15m THICK 50mm CLEAR STONE ON NON WOVEN FILTER CLOTH



NOTE:  
A All dimensions are in millimetres unless otherwise shown.

ONTARIO PROVINCIAL STANDARD DRAWING  
Nov 2006 Rev 1  
**LIGHT-DUTY  
SILT FENCE BARRIER**  
OPSD 219.110



CITY FILE No. D07-XX-XX-XXXX  
Scale Check  
File Location: J:\132469\_93\_Norman\7\_0\_Production\02\_Design\04\_Civil\Sheets\C-900 EROSION AND SEDIMENTATION CONTROL PLAN.dwg  
Printed: Monday, June 7, 2021 2:43:10 PM by Denis Dore