

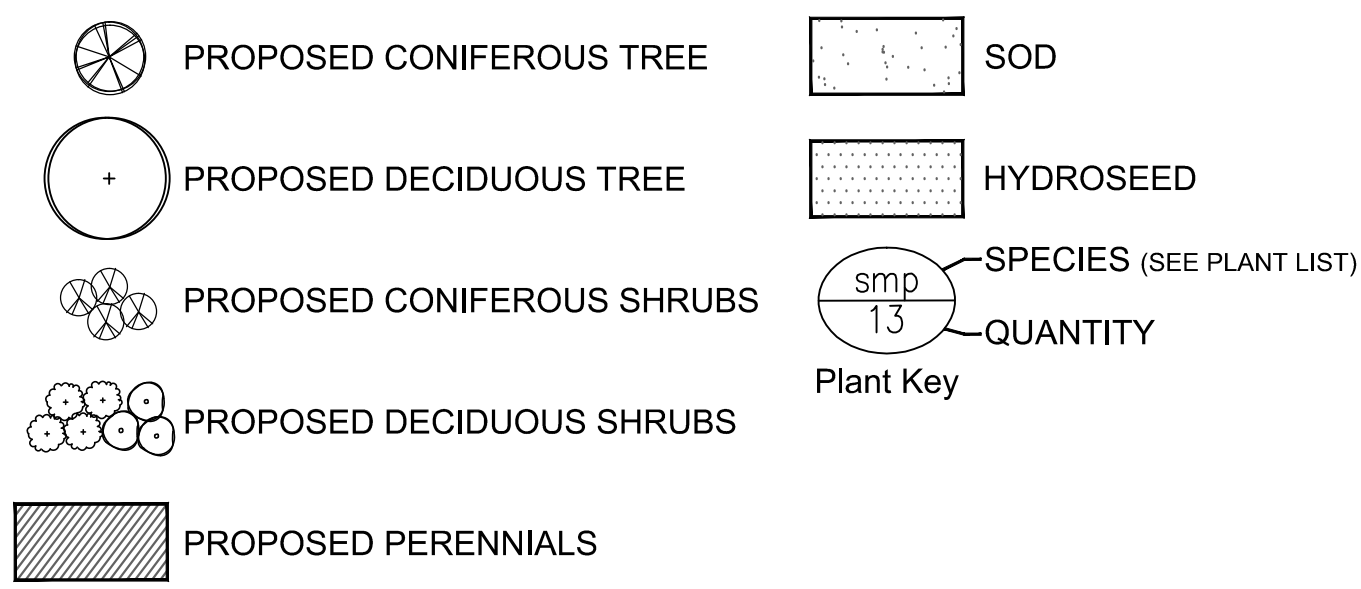
**PLANTING NOTES**

- This drawing shall be read in conjunction with all relevant Architectural Engineering and related drawings and documents.
- Refer to Engineering Drawings for Grading. Provide drainage as indicated in grading plan. Round smoothly all tops and toes of slopes. Compact all areas to 95% Standard Proctor Density unless otherwise noted.
- Refer to Architectural Drawings for site layout.
- Refer to Engineering Drawings for site servicing. Contractor must contact utility companies for stake outs prior to excavation or planting.
- Plant material shall be No. 1 Grade and shall comply with Canadian Standards for Nursery Stock (latest edition) published by the Canadian Nursery Landscape Association. All trees and shrubs shall be container grown, potted, S/B or B/B. Bare root planting will only be acceptable for certain species and as approved by the Landscape Architect. Plant material substitutions shall not be permitted without the written approval from the consultant prior to ordering plant material.
- Plant locations are schematic / approximate only. Contractor shall stake out locations on site for approval by the landscape architect prior to installation. Required plant material quantities shall be the number of plants indicated on the PLANTING PLAN. Any discrepancies between the number indicated on the PLANTING PLAN and the Quantity (QTY) indicated on the PLANT LIST shall be reported to the Landscape Architect.
- Shrubs shall be planted in a continuous prepared bed of 450mm depth approved planting soil mix covered with a Weed Control Fabric "Green Line" Landscape Fabric by Triac-LINC and 75mm depth composted pine mulch to finish grade.
- Perennials, Ornamental Grasses, Vines and Groundcovers shall be planted in a continuous prepared bed of 450mm depth approved planting soil mix covered over with 75mm depth composted pine mulch to finish grade unless otherwise noted. DO NOT PLACE WEED CONTROL FABRIC IN PERENNIAL, ORNAMENTAL GRASS, VINE, OR GROUND COVER beds.
- Sod areas to receive 125mm depth topsoil mix as specified and shall be No. 1 Kentucky Bluegrass Sod grown from minimum mixture of 3 Kentucky Bluegrass cultivars. Quality and source shall comply with Canadian Standards for Nursery Stock, Section 17, (latest edition) published by the Canadian Nursery Landscape Nursery Landscape Association.
- Apply the following mineral fertilizer unless modified by results of soil tests. Sodded areas - (11-8-4) 11% Nitrogen, 8% Phosphorus, 4% Potash at a rate of 450kg/ha - Planting Beds - (7-7-7) - 7% Nitrogen, 7% Phosphorus, 7% Potash at a rate of 0.9kg/m<sup>2</sup> of planting soil.
- Reinstatement all areas damaged or disturbed beyond the limit of Work.
- The contractor shall maintain the plant material according to accepted horticultural practice and shall warrant that as itemized on the plant list will remain free of defects for a minimum period of one (1) full year from completion acceptance and commencement of the warranty period. Throughout the warranty period, the Contractor, at his own expense, shall replace plant material of the same size and species as specified, if found dead, unhealthy, in an unsatisfactory growing condition or does not meet the requirements of the specifications as determined by the Landscape Architect. The Landscape Architect reserves the right to extend the Contractor's warranty for an additional one (1) year if, at the end of the warranty period, leaf development and growth is not sufficient to ensure future survival.
- Existing trees to be retained shall be protected according to the detail on this plan.
- Topsoil shall be high quality, Grade A, containing a maximum of 70% sandy loam and 10-15% organic matter and comply with the Canadian System of Soil Classification. pH value should be 5.5 to 7.5, and it should not contain toxic or growth prohibiting elements. Soil shall be free of stones greater than 25mm dia., and course vegetative material shall not exceed more than 2% of the volume. Topsoil will be stockpiled and inspected on site by the landscape architect prior to installation. The landscape architect may require testing by a certified company that can recommend measures to improve soil quality.

**PLANT LIST for 113023**

KEY	QTY	BOTANICAL NAME	COMMON NAME	SIZE	CONDITION	SPACING
<b>CONIFEROUS TREES</b>						
PBB	3	PICEA PUNGENS 'BABY BLUE EYES'	BABY BLUE EYES COLORADO SPRUCE	150cm WB	WB	AS SHOWN
PD	7	PICEA GLAUKA	WHITE SPRUCE	175cm WB	WB	AS SHOWN
TON	7	PICEA OMORICA	SERBIAN SPRUCE	175cm WB	WB	AS SHOWN
TON	17	THUJA OCCIDENTALIS 'NIGRA'	BLACK CEDAR	175cm WB	WB	AS SHOWN
<b>DECIDUOUS TREES</b>						
AC	2	AMELANCHIER CANADENSIS (SINGLE TRUNK)	DOWNY SERVICEBERRY	50mm WB	WB	AS SHOWN
AR	2	ACER RUBRUM	RED MAPLE	60mm WB	WB	AS SHOWN
ARA	10	ACER RUBRUM 'ARMSTRONG'	ARMSTRONG RED MAPLE	60mm WB	WB	AS SHOWN
AXB	4	AMELANCHIER X GRANDIFLORA 'BALLERINA'	BALLERINA SERVICEBERRY	45mm WB	WB	AS SHOWN
CC	5	CARPINUS CAROLINIANA	BLUE BEECH	60mm WB	WB	AS SHOWN
GTS	9	CLEODIPATRIS VAR. NERIMS 'SHADEMASTER'	SHADEMASTER HONEYLOCUST	60mm WB	WB	AS SHOWN
MHG	2	MALUS 'HARVEST GOLD'	HARVEST GOLD CRABAPPLE	50mm WB	WB	AS SHOWN
QR	11	QUERCUS RUBRA	RED OAK	60mm WB	WB	AS SHOWN
<b>CONIFEROUS SHRUBS</b>						
jb	10	JUNIPERUS CHINENSIS 'BAKAUREA'	GOLD STAR	40cm spnd	POTTED	120 cm O.C.
pc	24	JUNIPERUS CHINENSIS 'PFAFFERIANA COMPACTA'	COMPACT PFIFFER	40cm spnd	POTTED	80 cm O.C.
sm	59	SPINES MUGO 'SLOWMOUND'	SLOWMOUND MUGHO PINE	50cm spnd	POTTED	80 cm O.C.
<b>DECIDUOUS SHRUBS</b>						
cab	18	CLETHRANALFOLIA 'HUMMINGBIRD'	HUMMINGBIRD WHITE SUMMERSWEET	40cm ht	POTTED	120 cm O.C.
hes	56	HYDRANGEA MAC 'ENDLESS SUMMER'	ENDLESS SUMMER HYDRANGEA	60cm ht	POTTED	80 cm O.C.
pbb	70	POTENTILLA FRUTICOSA 'PINK BEAUTY'	PINK BEAUTY POTENTILLA (PINK)	40cm ht	POTTED	80 cm O.C.
rr	22	ROSARUGOSA	RUGOSA ROSE	40cm ht	POTTED	100 cm O.C.
rb	22	ROSARUGOSA 'BONICA'	BONICA SHRUB ROSE	40cm ht	POTTED	80 cm O.C.
sw	42	SPRAEA JAPONICA 'ANTHONY WATERER'	ANTHONY WATERER SPREA	50cm ht	POTTED	60 cm O.C.
smc	52	SPRAEA JAPONICA 'MAGIC CARPET'	MAGIC CARPET SPREA	50cm ht	POTTED	60 cm O.C.
sm	71	SYRINGA MEYERI 'PALIBI'	DWARF KOREAN LILAC	40cm ht	POTTED	100 cm O.C.
sss	32	SORBARIA SORBIFOLIA 'SEM'	SEM FALSE SPREA	40cm ht	POTTED	100 cm O.C.
<b>PERENNIALS</b>						
Hgg	161	HEMEROCALLIS 'GENTLE SHEPHERD'	GENTLE SHEPHERD DAYLILY	1g	POTTED	30 cm O.C.
Hso	161	HEMEROCALLIS 'STELLA D'ORO'	STELLA D'ORO DAYLILY	1g	POTTED	30 cm O.C.
<b>ORNAMENTAL GRASSES</b>						
Ckt	145	CALAMAGROSTIS ACU 'KARL FOERSTER'	FOERSTER'S FEATHER REED GRASS	1g	POTTED	60 cm O.C.
Her	127	HELICTOTRICHON SEMPERVIRENS 'SAPPHIRE'	SAPPHIRE BLUE OAT GRASS	1g	POTTED	60 cm O.C.

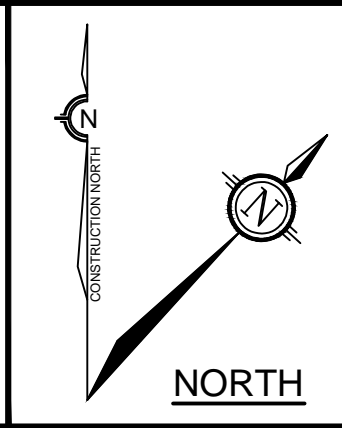
**LANDSCAPE LEGEND**



**List of Landscape Details on L-2**

- D1 - Deciduous Tree Planting
- D2 - Coniferous Tree Planting
- D3 - Shrub/Perennial Planting
- D4 - Brick Veneer Columns
- D5 - Decorative Metal Fencing
- D6 - Retaining Wall
- D7 - Maglin Bike Rack - MBR 100-S/Typical Bike Rack Layout

**NOTE:**  
THE POSITION OF ALL POLE LINES, CONDUITS, WATERMANS, SEWERS AND OTHER UNDERGROUND AND OVERGROUND UTILITIES AND STRUCTURES IS NOT NECESSARILY SHOWN ON THE CONTRACT DRAWINGS, AND WHERE SHOWN, THE ACCURACY OF THE POSITION OF SUCH UTILITIES AND STRUCTURES IS NOT GUARANTEED. BEFORE STARTING WORK, DETERMINE THE EXACT LOCATION OF ALL SUCH UTILITIES AND STRUCTURES AND ASSUME ALL LIABILITY FOR DAMAGE TO THEM.



No.	REVISION	DATE	BY
7.	REVISED PER CITY COMMENTS	JAN 6/15	RJ
6.	ISSUED FOR FINAL SITE PLAN SUBMISSION	DEC 12/14	RJ
5.	ISSUED FOR OMB ORDER	NOV 20/14	RJ
4.	REVISED PER CITY COMMENTS	OCT 31/14	ML
3.	GENERAL REVISIONS	JUNE 13/14	ML
2.	ISSUED FOR SITE PLAN APPLICATION	DEC 20/13	JF
1.	ISSUED FOR CLIENT REVIEW	DEC 19/13	JF

SCALE	FOR REVIEW ONLY
1:250	CHECKED: JF
1:250	DESIGNED: RJ
1:250	DRAWN: ML
1:250	CHECKED: RJ
1:250	APPROVED: MS

**NOVATECH**  
Engineers, Planners & Landscape Architects  
Suite 200, 240 Michael Cowpland Drive  
Ottawa, Ontario, Canada K2M 3P6  
Telephone: (613) 254-9643  
Facsimile: (613) 254-5867  
Website: www.novatech-eng.com

LOCATION  
401 MARCH ROAD  
STARBANK DEVELOPMENT  
DRAWING NAME  
LANDSCAPE PLAN

PROJECT NO.  
113023  
REV  
REV # 07  
DRAWING NO.  
113023-L1