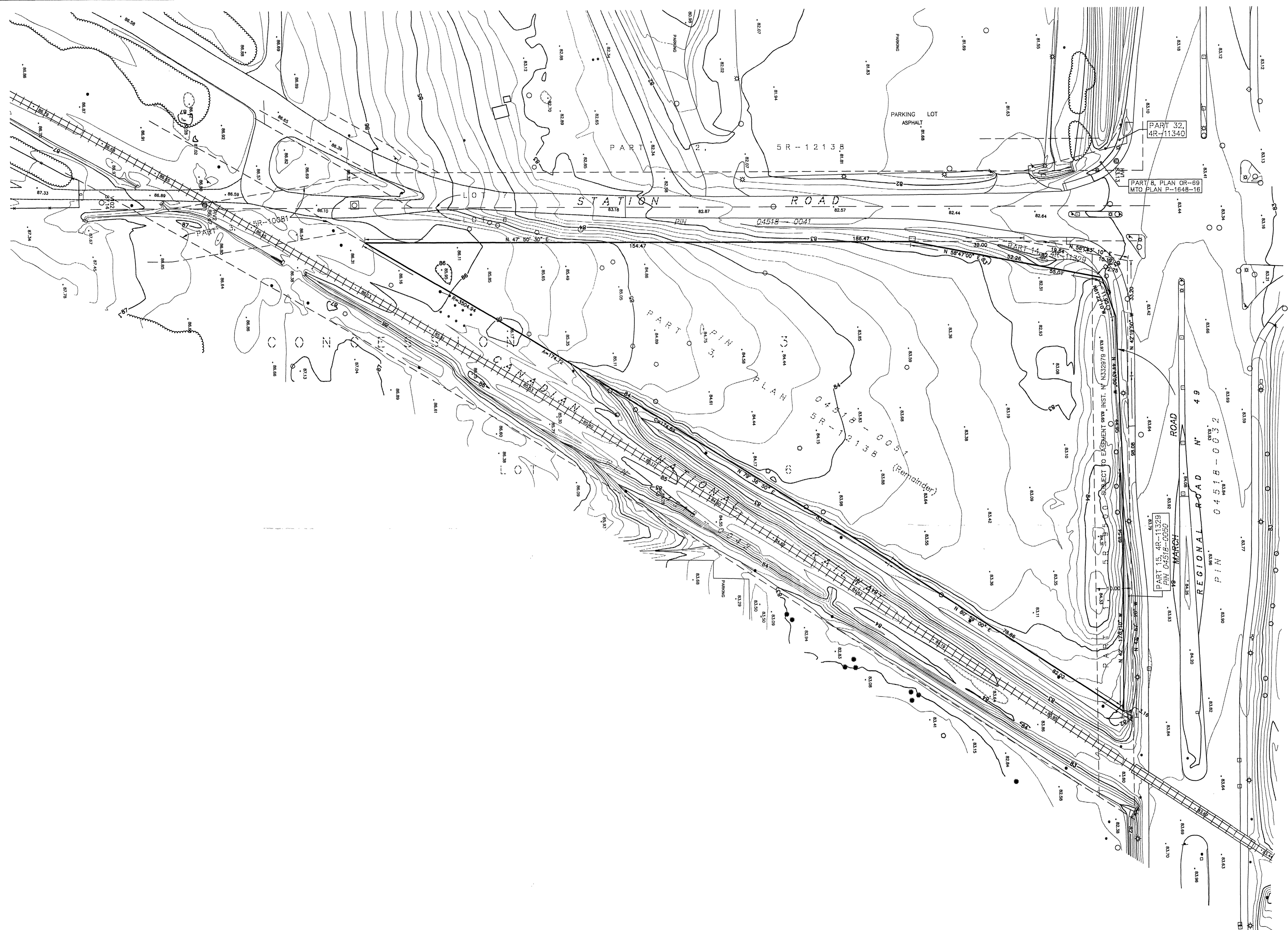
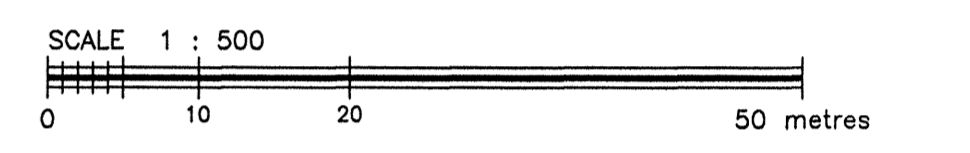


MBTRIC DISTANCES SHOWN ON THIS PLAN ARE IN METRES AND CAN BE CONVERTED TO FEET BY DIVIDING BY 0.3048



PLAN OF  
PART OF LOT 6  
CONCESSION 3  
TOWNSHIP OF MARCH  
Now In The CITY OF KANATA  
REGIONAL MUNICIPALITY OF OTTAWA-CARLETON



FAIRHALL, MOFFATT & WOODLAND LIMITED  
ONTARIO LAND SURVEYORS

**BEARING NOTE**  
BEARINGS ARE GRID BEARINGS AND ARE REFERRED TO THE CENTRAL MERIDIAN OF ZONE 9 OF THE ONTARIO COORDINATE SYSTEM, LONGITUDE 76° 30' W.

- NOTES**
1. TOPOGRAPHICAL DETAIL WAS DERIVED BY DIGITAL PHOTOGRAMMETRIC COMPILATION USING 1:2400 AERIAL PHOTOGRAPHY DATED NOVEMBER 14, 1998.
  2. UNLESS OTHERWISE INDICATED, WALKWAYS AND PARKING LOTS ARE ASPHALT.
  3. NOT ALL SMALL SIGNS HAVE BEEN SHOWN.
  4. BOUNDARY INFORMATION WAS COMPILED FROM LAND REGISTRY OFFICE RECORDS.

- ELEVATION NOTES**
1. ELEVATIONS SHOWN HEREON ARE REFERRED TO GEODETIC DATUM (CGVD28).
  2. CONTOUR INTERVAL IS 0.25 METRE.

**LEGEND**

● POLE	===== PAVED ROAD
○ POST	----- LOOSE ROAD
✱ LIGHT STANDARD	===== PAVED DRIVE
┌ CULVERT	----- LOOSE DRIVE
○ MANHOLE	- - - - - DITCH / STREAM
□ CATCH BASIN	SHORELINE
⊕ FIRE HYDRANT	PILES
● ○ TREE CONIF/DECID	INDEX CONTOUR
WOODED AREA	125
123.4 SPOT ELEVATION	INTERMEDIATE CONTOUR

THIS IS NOT  
A VALID COPY  
UNLESS EMBOSSED  
WITH SEAL

**Fairhall  
Moffatt &  
Woodland**  
LIMITED  
ONTARIO LAND SURVEYORS

OTTAWA KANATA

JOB No. B 4 6 2 0 0  
FILE No.  
REFERENCE No. 195 - 3 - MARCH  
S:\085B46200 13/11/2000 B46200.dwg (1)

© COPYRIGHT 2000. REPRODUCTION, ALTERATION OR DISTRIBUTION OF THIS PLAN WITHOUT THE WRITTEN CONSENT OF FAIRHALL, MOFFATT & WOODLAND LIMITED IS PROHIBITED.