

**Copyright Reserved**  
 The Contractor shall verify and be responsible for all dimensions. The drawings are the property of A. Dagenais & Assoc., Inc. without license. The drawings are the property of A. Dagenais & Assoc., Inc. without license. The drawings are the property of A. Dagenais & Assoc., Inc. without license. The drawings are the property of A. Dagenais & Assoc., Inc. without license.

**12 Unit Apartment Building**  
 at 5574 Rockdale Road, Vars Ontario  
 Client: 23940711 ONTARIO INC.

WEST & NORTH ELEVATION

Drawn by: AL MB, BL  
 Revised by: MIA & DL  
 Date: July 2015  
 Scale: as shown  
 Folder #: 013-286

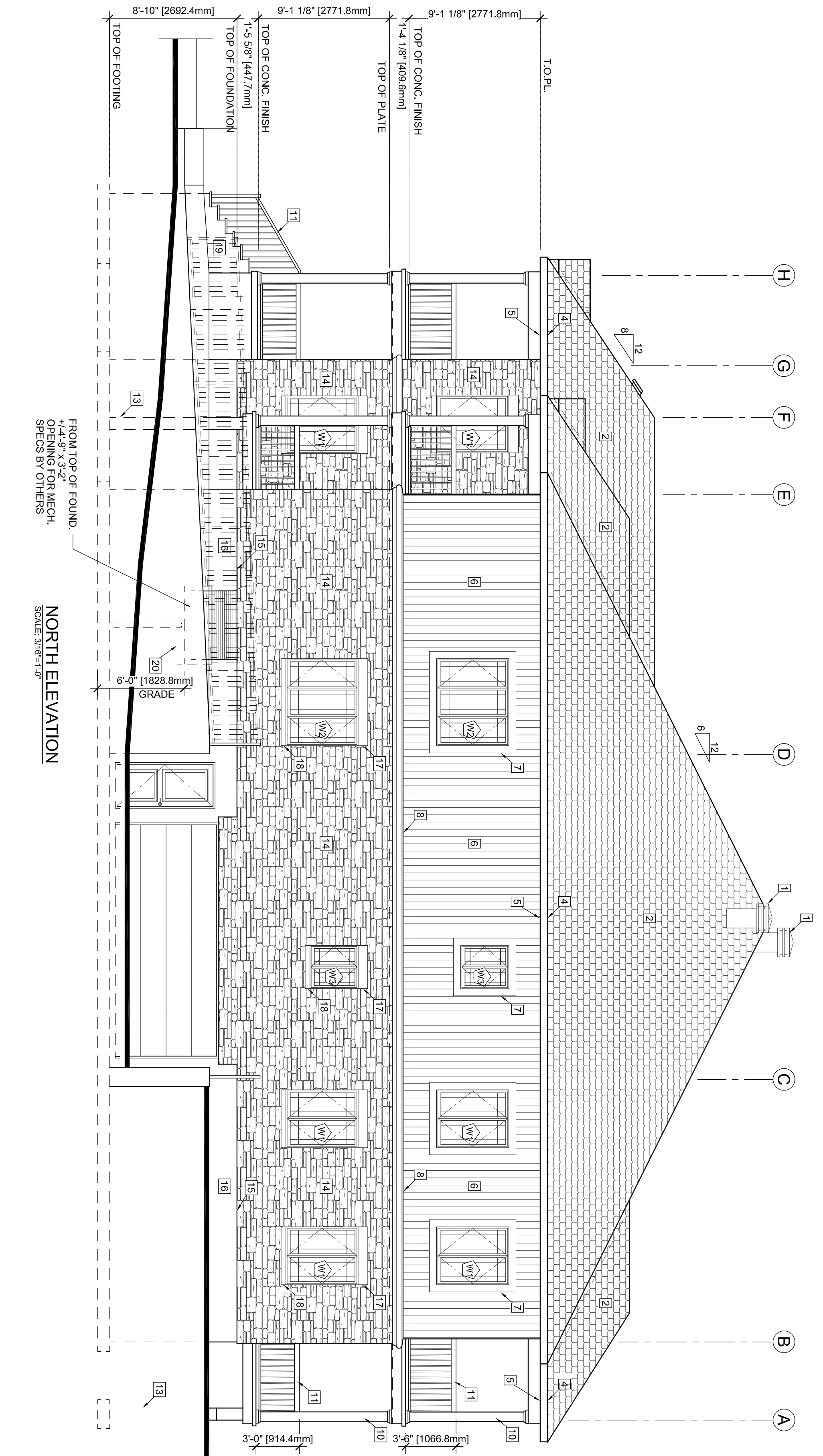
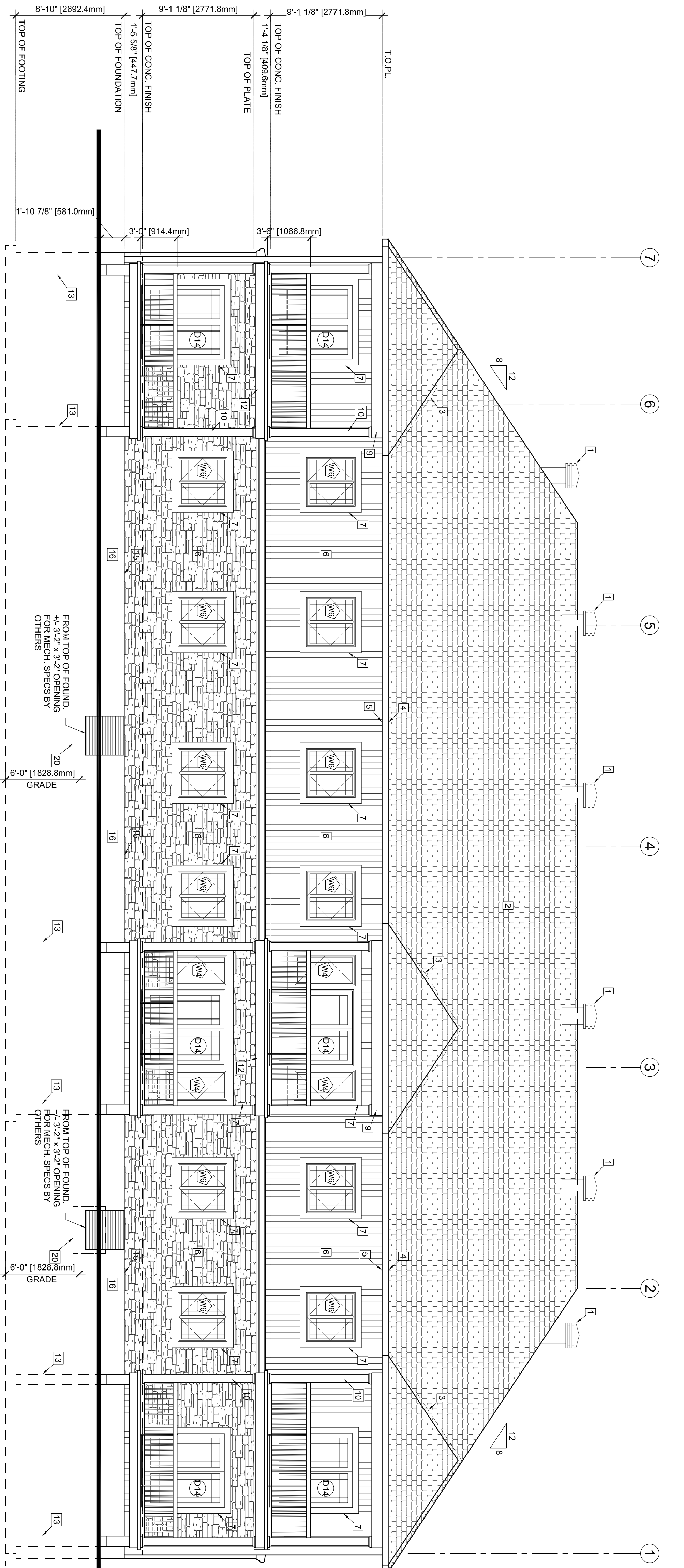
Stamp

Plan number: **A3.1**  
 OF  
**24**

**A. Dagenais & Assoc., Inc.**  
 CONSULTING ENGINEERS & ARCHITECT  
 INCORPORATED  
 931, Notre Dame, P.O. Box 160  
 Erin, Ontario, N0A 1W0  
 (513) 893-0700

**ONTARIO ASSOCIATION OF ARCHITECTS**  
 MICHELLE LANGRISH  
 0720

#5	For municipal approval	December 1, 2017
#4	For client review	Dec. 10, 2015
#3	For client review	July 29, 2015
#2	For client coordination meeting	December 9, 2015
#1	For client coordination meeting	December 9, 2015
No.	Revision	Date



**LEGEND:**

1. MAXIMUM ROOF VENT MODEL 301 OR EQUIVALENT
2. ASPHALT SHINGLES (25 YEARS MIN)
3. PRE-PAINTED FLASHING
4. ALUMINUM FASCIA ON 2x6
5. ALUMINUM VENTED SOFFIT
6. VERTICAL CANELED SIDING
7. 8" HIGH MOLDING SEE DETAIL 3044.0
8. WOOD BEAM BALDHEAD COVERED WITH ALUMINUM FLAT STOCK
9. 8"x8" ALUMINUM DECORATIVE COLUMN OVER WOOD POST
10. PRECAST CONCRETE (SIZES BY MANUFACTURER)
11. 12" DECK COVERED WITH ALUMINUM FLAT STOCK
12. 10"x10" REINFORCED CONCRETE PILLAR ON CONCRETE PAD (SEE FOUNDATION PLAN)
13. STONE VENEER
14. VERTICAL JOINTS @ 24" OC
15. VERTICAL JOINTS @ 24" OC
16. 4" HIGH PRECAST CONCRETE WINDOW SILL
17. REINFORCED CONCRETE STEPS AND PORCH (BROOM FINISH) SEE DETAILS
18. GALV. WINDOW WELL DRAIN VERT. 4"x6" DRAINAGE PERIMETER DRAIN BUT NOT CONNECTED TO IT.
19. GALV. WINDOW WELL DRAIN VERT. 4"x6" DRAINAGE PERIMETER DRAIN BUT NOT CONNECTED TO IT.
20. GALV. WINDOW WELL DRAIN VERT. 4"x6" DRAINAGE PERIMETER DRAIN BUT NOT CONNECTED TO IT.

**IMPORTANT NOTES:**

**MISCELLANEOUS**

- CALL OUT OVER AND AROUND ALL EXTERIOR OPENINGS USING NON-HARDENING CALKING COMPOUND
- FLASH ALL CHANGES OF MATERIALS ON EXTERIOR WALLS
- ALL SIDING TO BE A MINIMUM OF 8" (203mm) ABOVE FINISHED GRADE
- ABOVE GRADE MASONRY
- ALL ABOVE GRADE MASONRY IS TO CONFORM TO THE OUTRIB BUILDING CODE
- AT THE BRICK KICKER COUNTERSLASHING SHALL BE UP 8" (203mm) BEHIND THE BUILDING FELT FELT AND BELOW THE BOTTOM COURSE WITH VERTICAL JOINTS RAKED CLEAN. WEERHOLDS 24" (609mm) O.C.
- BRICK VENEER THE SPACING TO BE AT MAXIMUM VERTICAL SPACING OF 6" (152mm) AND A MAXIMUM HORIZONTAL SPACING OF 24" (609mm) AND A MAXIMUM VERTICAL SPACING OF 20" (508mm) TO COMBIDE WITH WALL STUDS SPACING.

**ROOFING**

- ALL ROOFING SHALL BE APPLIED ACCORDING TO THE MANUFACTURER'S RECOMMENDATIONS AND CONFORM TO OUTRIB BUILDING CODE
- TWO LAYERS OF FELT PAPER SHALL BE INSTALLED ON EAVES EXTENDING 30" (762mm) ON ROOF FROM THE INNER FACE OF THE EXTERIOR WALL
- FELT PAPER SHALL BE INSTALLED UNDER ROOF WALLS EXTENDING 48" ON BOTH SIDES ON JOINING ROOF.

**SHEET METAL**

- ALL REQUIRED FLASHINGS TO BE 28 GAUGE GALVANIZED METAL UNLESS OTHERWISE SPECIFIED ON PLANS
- ALL OVERHANG DIMENSIONS ARE FROM FACE OF STUD TO FACE OF FASCIA BOARD
- PROVIDE PROPER ATTIC VENTILATION 1:300 MIN. OF INSULATED CEILING AREA