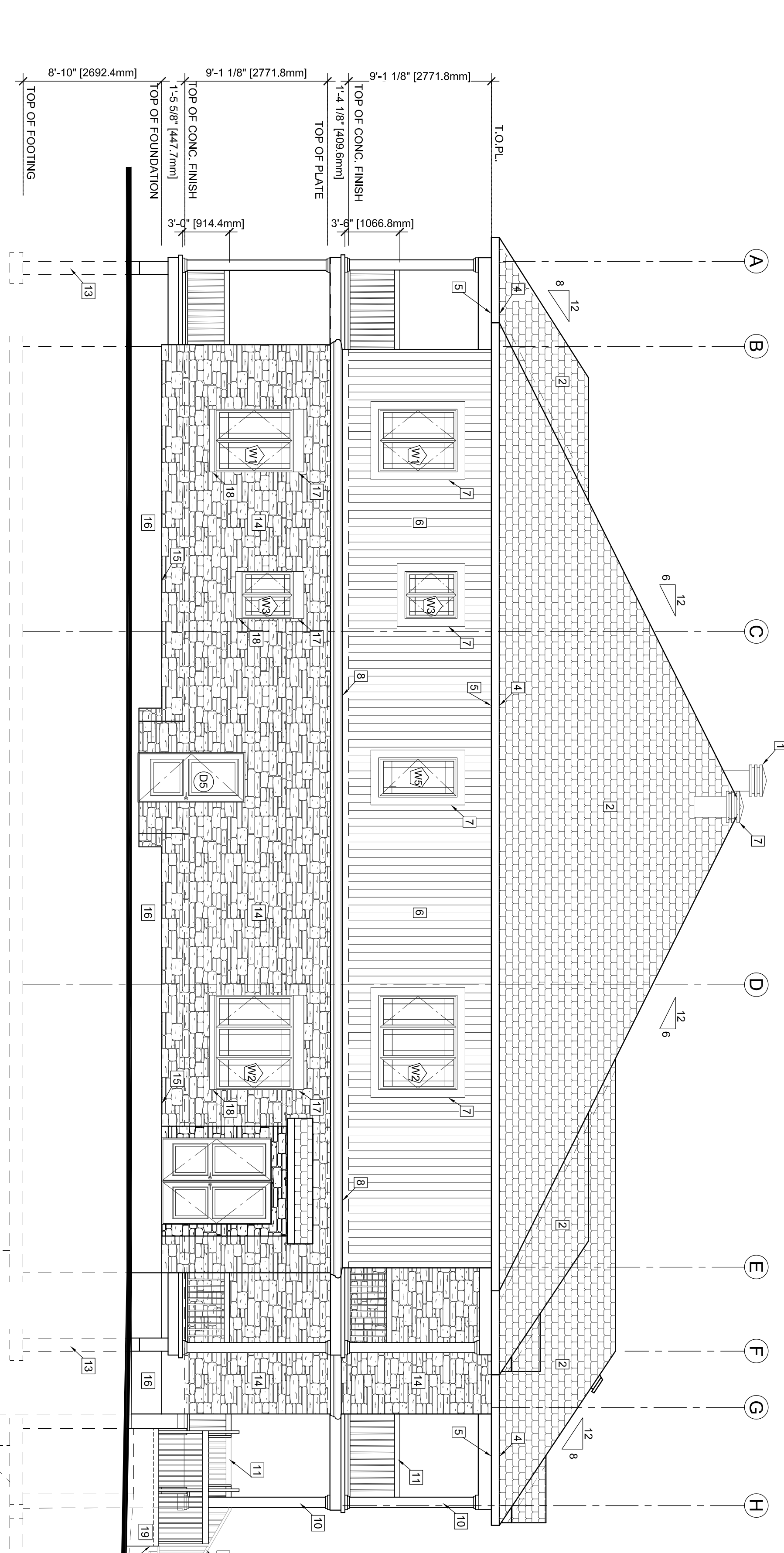


EAST ELEVATION
SCALE: 3/16"=1'-0"



SOUTH ELEVATION
SCALE: 3/16"=1'-0"

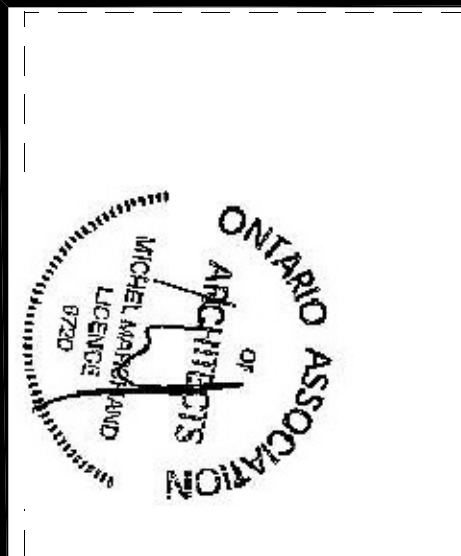
ALL W4, W5 WINDOWS SHALL BE PROTECTED BY A MINIMUM 1/2" (12.7mm) CLEARANCE FROM THE SASH TO NOT MORE THAN 100mm (4") SEE WINDOW SCHEDULES

- LEGEND:**
1. MAXIMUM ROOF VENT MODEL 301 OR EQUIVALENT
 2. ASPHALT SHINGLES (25 YEARS MIN)
 3. PRE-PAINTED FLASHINGS
 4. ALUMINUM FASCIA ON 2x6
 5. ALUMINUM VENTED SOFFIT
 6. VERTICAL CANEEL SIDING
 7. 8" WIDE VINYL TRIM (SEE DETAIL 3A4.0)
 8. WOOD BEAM BULKHEAD COVERED WITH ALUMINUM FLAT STOCK
 9. ALUMINUM FLAT STOCK
 10. 8"x8" ALUMINUM DECORATIVE COLUMN OVER WOOD POST
 11. PRE-FAB RAILING (SPICES BY MANUFACTURER)
 12. DECK COVERED WITH ALUMINUM FLAT STOCK
 13. 10"x10" REINFORCED CONCRETE PILLAR ON CONCRETE PAD (SEE FOUNDATION PLAN)
 14. STONE VENEER
 15. WEEPHOLES @ 24" o.c.
 16. PRECAST CONCRETE INTEL 8" HEIGHT
 17. PRECAST CONCRETE WINDOW SILL
 18. 4" HIGH PRECAST CONCRETE WINDOW SILL
 19. REINFORCED CONCRETE STEPS AND PORCH (ROOM FINISH) SEE DETAILS
 20. GALV. WINDOW WELL C/W VERT. 4" DIA. DRAINAGE PIPE FILLED W/ GALVANIZED STEEL DOWN TO ITS PERIMETER DRAIN BUT NOT CONNECTED TO IT.

IMPORTANT NOTES:

- MISCELLANEOUS**
- GULCH OVER AND AROUND ALL EXTERIOR OPENINGS USING NON-HARDENING CAULKING COMPOUND.
 - FLASH ALL CHANGES OF MATERIALS ON EXTERIOR WALLS.
 - ALL SIDING TO BE A MINIMUM OF 8" (203mm) ABOVE FINISHED GRADE.
- ABOVE GRADE MASONRY**
- ALL ABOVE GRADE MASONRY IS TO CONFORM TO THE ONTARIO BUILDING CODE.
 - AT THE BRICK VENEER COUNTERSPLASHING SHALL BE UP 8" (203mm) BEHIND THE BUILDING FELT FELT AND BELOW THE BOTTOM COURSE WITH VERTICAL JOINTS RAKED CLEAN. WEEPHOLES 2" (50mm) O.C.
- ROOFING**
- ALL ROOFING SHALL BE APPLIED ACCORDING TO THE MANUFACTURER'S RECOMMENDATIONS AND CONFORM TO ONTARIO BUILDING CODE.
 - TWO LAYERS OF FELT PAPER SHALL BE INSTALLED ON EAVES EXTENDING 3" (75mm) ON ROOF FROM THE INNER FACE OF THE EXTERIOR WALL.
 - FELT PAPER SHALL BE INSTALLED UNDER ROOF VALLEY EXTENDING 4" ON BOTH SIDES ON JOINING ROOF.
- SHEET METAL**
- ALL REQUIRED FLASHINGS TO BE 28 GAUGE GALVANIZED METAL UNLESS OTHERWISE SPECIFIED ON PLANS.
- ALL OVERHANG DIMENSIONS ARE FROM FACE OF STUD TO FACE OF FASCIA BOARD**
- PROVIDE PROPER ATTIC VENTILATION 1/300 MIN. OF INSULATED CEILING AREA

Contractor Release
The Contractor shall verify and be responsible for all dimensions, quantities and materials shown on these drawings. The Contractor shall be responsible for all dimensions, quantities and materials shown on these drawings. The Contractor shall be responsible for all dimensions, quantities and materials shown on these drawings.



45	For municipal approval	December 1, 2017
44	For client review	Dec. 10, 2015
43	For client review	July 29, 2015
42	For client coordination meeting	December 9, 2015
41	Revision	038

A. Dagenais & Assoc. Inc.
CONSULTING ENGINEERS & ARCHITECT
INDEPENDENT CONSULTANTS & ARCHITECTS
931, Notre Dame, P.O. Box 160
Erie, Ontario, N0A 1W0
(613) 683-0700

12 Unit Apartment Building
at 5574 Rockdale Road, Vars, Ontario
Client: 2394011 ONTARIO INC.
EAST & SOUTH ELEVATION
Drawn by: AL MB, BL
Revised by: MNA & DL
Date: July 2015
Scale: as shown
Folder #: 013-286

Stamp
Plan number: **A3.0**
OF
24