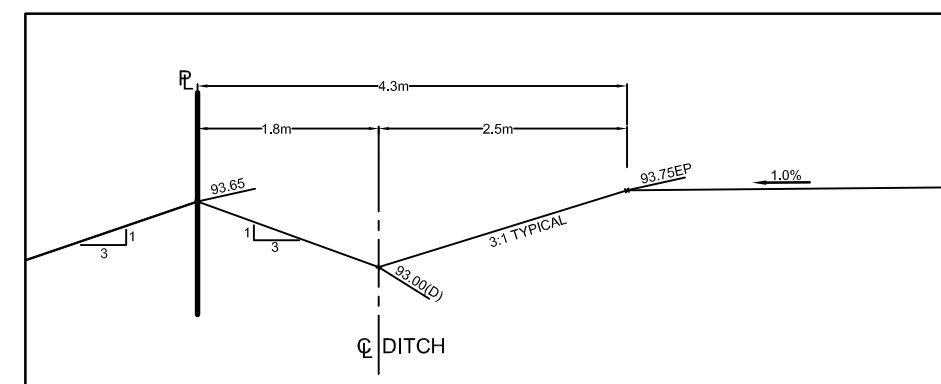
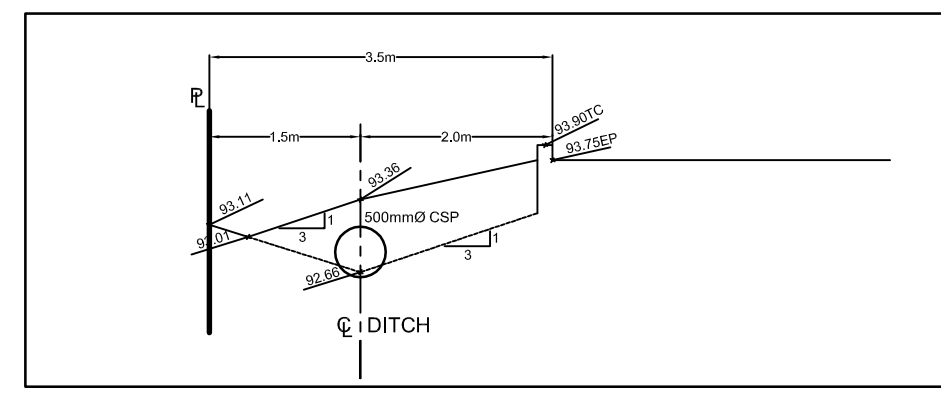


**GENERAL NOTES:**

- COORDINATE AND SCHEDULE ALL WORK WITH OTHER TRADES AND CONTRACTORS.
- DETERMINE THE EXACT LOCATION, SIZE, MATERIAL AND ELEVATION OF ALL EXISTING UTILITIES PRIOR TO COMMENCING CONSTRUCTION. PROTECT AND ASSUME RESPONSIBILITY FOR ALL EXISTING UTILITIES WHETHER OR NOT SHOWN ON THIS DRAWING.
- OBTAIN ALL NECESSARY PERMITS AND APPROVALS FROM THE CITY OF OTTAWA AND CONSERVATION AUTHORITY BEFORE COMMENCING CONSTRUCTION.
- BEFORE COMMENCING CONSTRUCTION OBTAIN AND PROVIDE PROOF OF COMPREHENSIVE. ALL RISK AND OPERATIONAL LIABILITY INSURANCE FOR \$5,000,000.00. INSURANCE POLICY TO NAME OWNERS AND ENGINEERS AND ARCHITECTS AS CO-INSURED.
- RESTORE ALL DISTURBED AREAS ON-SITE AND OFF-SITE, INCLUDING TRENCHES AND SURFACES ON PUBLIC ROAD ALLOWANCES TO EXISTING CONDITIONS OR BETTER TO THE SATISFACTION OF THE CITY OF OTTAWA AND ENGINEER.
- REMOVE FROM SITE ALL EXCESS EXCAVATED MATERIAL, ORGANIC MATERIAL AND DEBRIS UNLESS OTHERWISE INSTRUCTED BY ENGINEER. EXCAVATE AND REMOVE FROM SITE ANY CONTAMINATED MATERIAL. ALL CONTAMINATED MATERIAL SHALL BE DISPOSED OF AT A LICENSED LANDFILL FACILITY.
- ALL ELEVATIONS ARE GEODETIC.
- REFER TO ARCHITECT'S AND LANDSCAPE ARCHITECT'S DRAWINGS FOR BUILDING AND HARDSURFACE AREAS AND DIMENSIONS.
- REFER TO SERVICING AND STORMWATER REPORT(R-2013-039) PREPARED BY NOVATECH ENGINEERING CONSULTANTS LTD.
- SAW CUT AND KEY GRIND ASPHALT AT ALL ROAD CUTS AND ASPHALT TIE IN POINTS AS PER CITY OF OTTAWA STANDARDS (R10).
- PROVIDE LINE/PARKING PLAN.
- CONTRACTOR TO PROVIDE THE CONSULTANT WITH A GRADING PLAN INDICATING AS-BUILT ELEVATIONS OF ALL DESIGN GRADES SHOWN ON THIS PLAN.

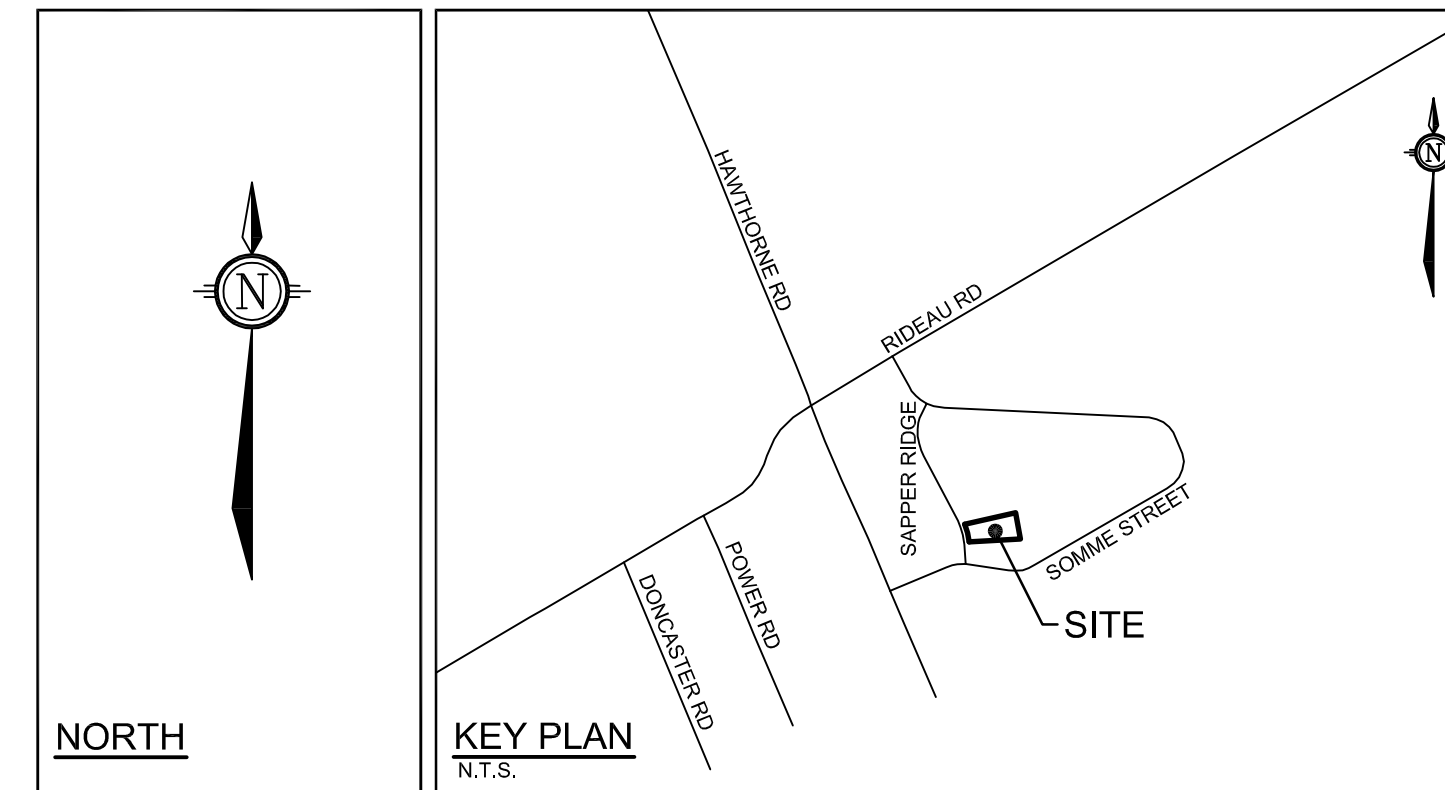
**GEOTECHNICAL NOTES:**

- REFER TO GEOTECHNICAL INVESTIGATION REPORT (MAY 2013), PREPARED BY HOULE CHEVRIER ENGINEERING, FOR SUBSURFACE CONDITIONS, CONSTRUCTION RECOMMENDATIONS, AND GEOTECHNICAL INSPECTION REQUIREMENTS. THE GEOTECHNICAL CONSULTANT IS TO REVIEW ON-SITE CONDITIONS AFTER EXCAVATION PRIOR TO PLACEMENT OF THE GRANULAR MATERIAL.
- ALL TOPSOIL, ORGANIC OR DELETERIOUS MATERIAL MUST BE ENTIRELY REMOVED FROM BENEATH THE PROPOSED PARKING LOT AND SEPTIC AREA AS DIRECTED BY THE SITE ENGINEER OR GEOTECHNICAL ENGINEER.
- EXPOSED SUBGRADE IN PROPOSED PAVED AREAS SHOULD BE PROOF ROLLED WITH A LARGE STEEL DRUM ROLLER AND INSPECTED BY THE GEOTECHNICAL ENGINEER PRIOR TO THE PLACEMENT OF GRANULARS.
- ANY SOFT AREAS EVIDENT FROM THE PROOF ROLLING SHOULD BE SUB-EXCAVATED AND REPLACED WITH SUITABLE EARTH BORROW APPROVED BY THE GEOTECHNICAL ENGINEER.
- THE GRANULAR BASE SHOULD BE COMPACTED TO AT LEAST 95% OF THE STANDARD PROCTOR MAXIMUM DRY DENSITY VALUE. ANY ADDITIONAL GRANULAR FILL USED BELOW THE PROPOSED PAVEMENT SHOULD BE COMPACTED TO AT LEAST 95% OF THE STANDARD PROCTOR MAXIMUM DRY DENSITY VALUE.
- THE SUBGRADE SHOULD BE SHAPED AND CROWNED TO PROMOTE DRAINAGE OF THE ROADWAY GRANULARS.
- FOR AREAS OF THE PARKING LOT THAT REQUIRE THE SUBGRADE TO BE RAISED. ANY MATERIALS PROPOSED FOR THIS USE MUST BE APPROVED BY THE GEOTECHNICAL ENGINEER BEFORE PLACEMENT.
- GEOTECHNICAL INSPECTION OF SUBGRADE AND CONFIRMATION OF PAVEMENT STRUCTURE IS REQUIRED BEFORE PLACEMENT OF ANY GRANULAR MATERIAL.
- GRANULAR MATERIALS (GRANULAR 'A' AND GRANULAR 'B') SHOULD BE COMPACTED IN ACCORDANCE WITH THE GEOTECHNICAL INVESTIGATION REPORT.



**LEGEND**

- DITCH AND DIRECTION OF FLOW
- - - ASPHALT EDGE (PERMALOC - SEE 112034-D1 FOR DETAILS)
- PROPOSED ELEVATION
- EXISTING ELEVATION
- PROPOSED DITCH ELEVATION
- PROPOSED TOP OF GRATE ELEVATION
- TOP OF CURB
- BARRIER CURB
- DEPRESSED CURB
- MOUNTABLE CURB
- MAXIMUM 3:1 SIDESLOPE
- GRADE AND DIRECTION
- PROPOSED DRY HYDRANT
- PROPOSED TOP OF BOTTOM FLANGE
- PROPOSED DITCH INLET CATCHBASIN
- EXISTING WELL (APPROXIMATE LOCATION)
- TEST PIT
- SANITARY MAINTENANCE HOLE GRATE
- PROPOSED RIP RAP



**GRADING NOTES:**

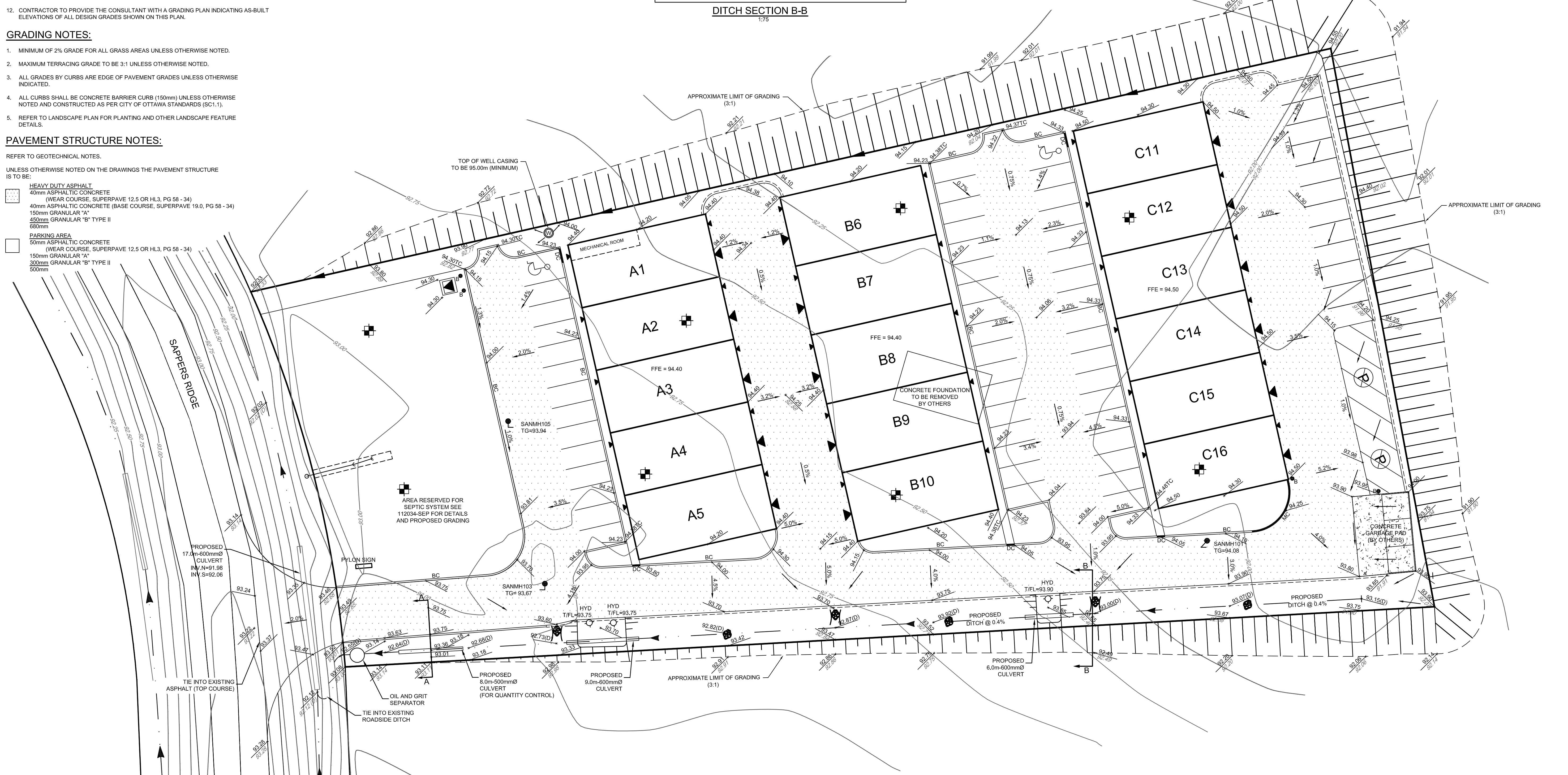
- MINIMUM OF 2% GRADE FOR ALL GRASS AREAS UNLESS OTHERWISE NOTED.
- MAXIMUM TERRACING GRADE TO BE 3:1 UNLESS OTHERWISE NOTED.
- ALL GRADES BY CURBS ARE EDGE OF PAVEMENT GRADES UNLESS OTHERWISE INDICATED.
- ALL CURBS SHALL BE CONCRETE BARRIER CURB (150mm) UNLESS OTHERWISE NOTED AND CONSTRUCTED AS PER CITY OF OTTAWA STANDARDS (SC1.1).
- REFER TO LANDSCAPE PLAN FOR PLANTING AND OTHER LANDSCAPE FEATURE DETAILS.

**PAVEMENT STRUCTURE NOTES:**

REFER TO GEOTECHNICAL NOTES.

UNLESS OTHERWISE NOTED ON THE DRAWINGS THE PAVEMENT STRUCTURE IS TO BE:

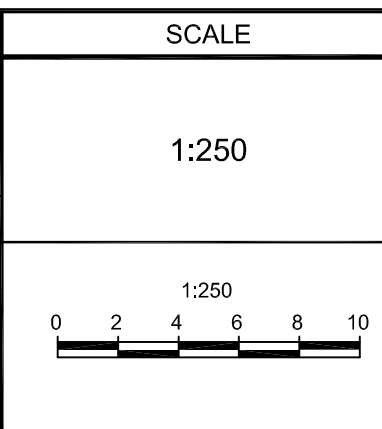
- HEAVY DUTY ASPHALT
- 40mm ASPHALTIC CONCRETE (WEAR COURSE, SUPERPAVE 12.5 OR HL3, PG 58 - 34)
- 40mm ASPHALTIC CONCRETE (BASE COURSE, SUPERPAVE 19.0, PG 58 - 34)
- 150mm GRANULAR 'A'
- 450mm GRANULAR 'B' TYPE II
- 680mm
- PARKING AREA
- 50mm ASPHALTIC CONCRETE (WEAR COURSE, SUPERPAVE 12.5 OR HL3, PG 58 - 34)
- 150mm GRANULAR 'A'
- 300mm GRANULAR 'B' TYPE II
- 500mm



**NOTE:**  
THE POSITION OF ALL POLE LINES, CONDUITS, WATERMANS, SEWERS AND OTHER UNDERGROUND AND OVERGROUND UTILITIES AND STRUCTURES IS NOT NECESSARILY SHOWN ON THE CONTRACT DRAWINGS, AND WHERE SHOWN, THE ACCURACY OF THE POSITION OF SUCH UTILITIES AND STRUCTURES IS NOT GUARANTEED. BEFORE STARTING WORK, DETERMINE THE EXACT LOCATION OF ALL SUCH UTILITIES AND STRUCTURES AND ASSUME ALL LIABILITY FOR DAMAGE TO THEM.

REFER TO DETAIL PLANS 112034-D1, 112034-D2 & EROSION AND SEDIMENT CONTROL PLAN 112034-ESC FOR ADDITIONAL NOTES AND DETAILS

No.	REVISION	DATE	BY
2.	ISSUED FOR SITE PLAN APPROVAL	FEB 11/14	LAB
1.	ISSUED FOR DISCUSSION	MAY 1/13	DJC



DESIGN: LAB  
CHECKED: SMG  
DRAWN: DJC  
CHECKED: LAB  
APPROVED: SMG

**FOR REVIEW ONLY**

LICENSED PROFESSIONAL ENGINEER  
A. BOWLEY  
10081118  
Feb 10 2014  
PROVINCE OF ONTARIO

LICENSED PROFESSIONAL ENGINEER  
S.M. GORDON  
Feb 10 2014  
PROVINCE OF ONTARIO

**NOVATECH**  
ENGINEERING CONSULTANTS LTD.  
ENGINEERS & PLANNERS  
Suite 200, 240 Michael Cowpland Drive  
Ottawa, Ontario, Canada  
K2M 1P6  
Telephone: (613) 254-9643  
Facsimile: (613) 254-5867  
Email: novainfo@novatech-eng.com

CITY OF OTTAWA  
35 SAPPERS RIDGE - APEX SOUTH BUSINESS CENTRE

**GRADING PLAN**

PROJECT NO.: 112034B-1  
REV: REV # 2  
DRAWING NO.: 112034-GR

M:\2011\112034\CAD\Design\112034-GR.dwg GR, Feb 12, 2014, 12:22pm, lbowley