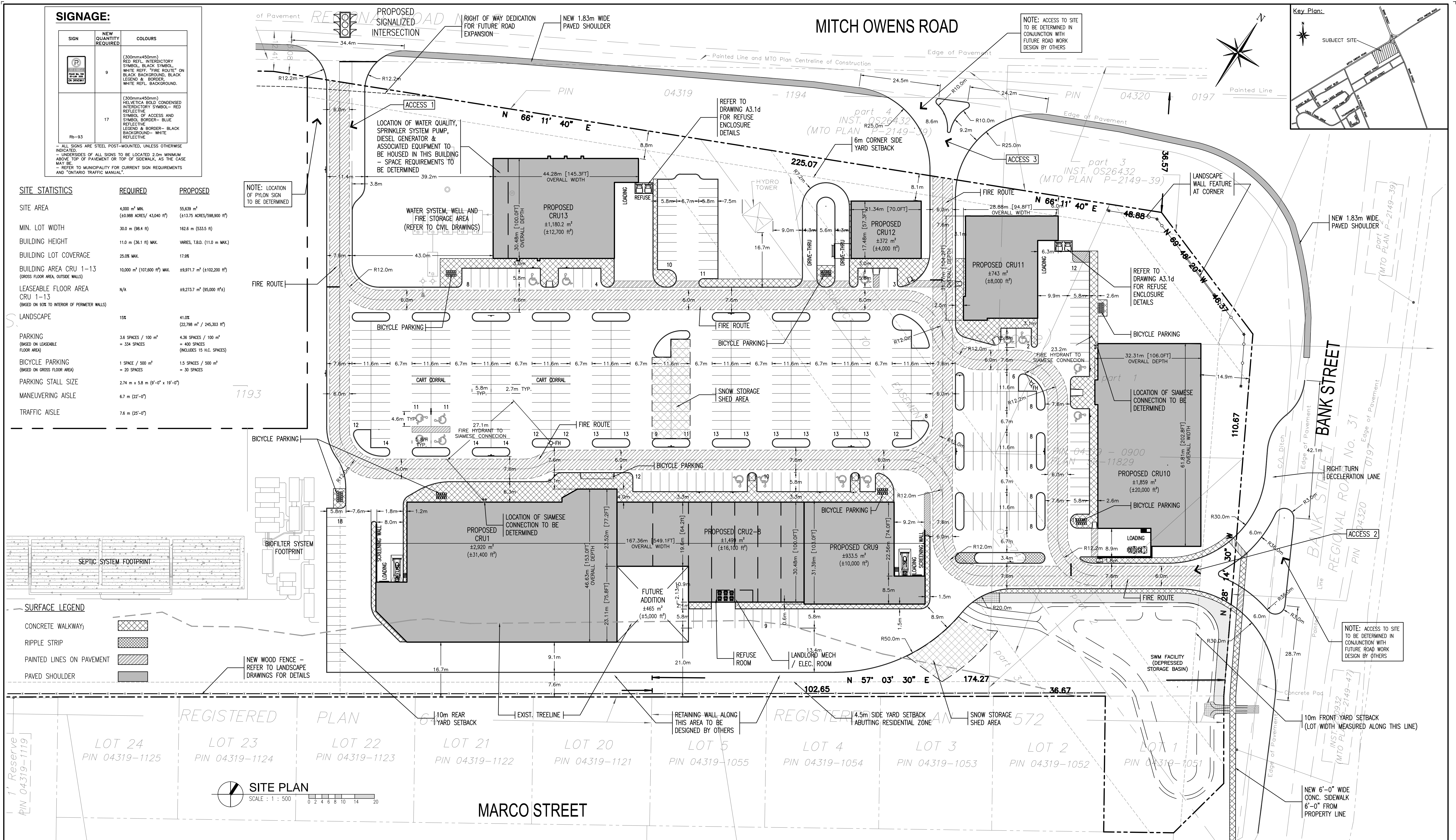


**SIGNAGE:**

SIGN	NEW QUANTITY REQUIRED	COLOURS
	9	(300mmx450mm) RED REFL. INTERIOCTORY SYMBOLS, BLACK SYMBOL, WHITE REFL. "FIRE ROUTE" ON BLACK BACKGROUND, BLACK LEGEND & BORDER, WHITE REFL. BACKGROUND.
	17	(300mmx450mm) HELVETICA BOLD CONDENSED INTERIOCTORY SYMBOL- RED REFLECTIVE SYMBOL OF ACCESS AND SYMBOL BORDER- BLUE REFLECTIVE LEGEND & BORDER- BLACK BACKGROUND- WHITE REFLECTIVE

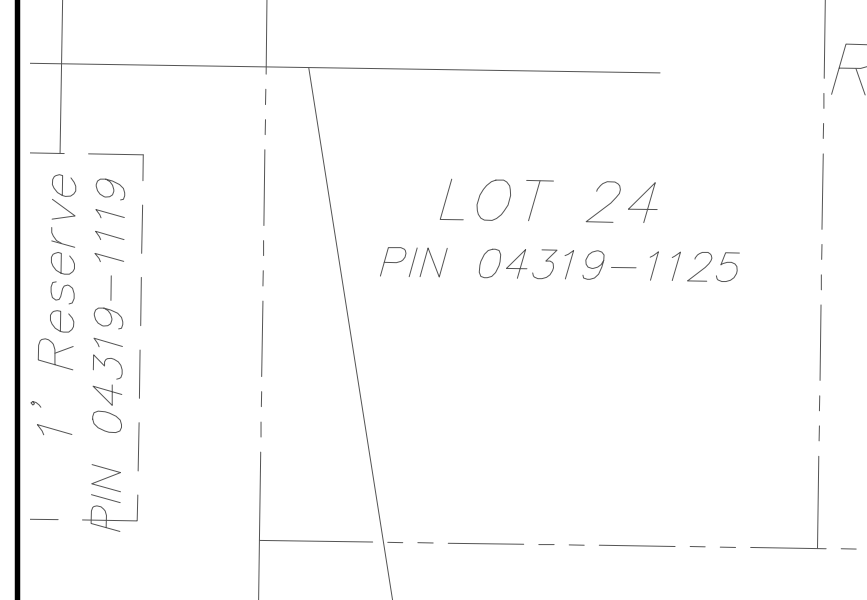
ALL SIGNS ARE STEEL POST-MOUNTED, UNLESS OTHERWISE INDICATED.  
 UNDERSIDES OF ALL SIGNS TO BE LOCATED 2.0m MINIMUM ABOVE TOP OF PAVEMENT OR TOP OF SIDEWALK, AS THE CASE MAY BE.  
 REFER TO MUNICIPALITY FOR CURRENT SIGN REQUIREMENTS AND "ONTARIO TRAFFIC MANUAL".

SITE STATISTICS	REQUIRED	PROPOSED
SITE AREA	4,000 m <sup>2</sup> MIN. (10.988 ACRES/ 43,040 ft <sup>2</sup> )	55,639 m <sup>2</sup> (133.75 ACRES/ 598,900 ft <sup>2</sup> )
MIN. LOT WIDTH	30.0 m (98.4 ft)	162.6 m (533.5 ft)
BUILDING HEIGHT	11.0 m (36.1 ft) MAX.	VARES, T.B.D. (11.0 m MAX.)
BUILDING LOT COVERAGE	25.0% MAX.	17.9%
BUILDING AREA CRU 1-13 (GROSS FLOOR AREA, OUTSIDE WALLS)	10,000 m <sup>2</sup> (107,600 ft <sup>2</sup> ) MAX.	49,971.7 m <sup>2</sup> (539,200 ft <sup>2</sup> )
LEASEABLE FLOOR AREA CRU 1-13 (BASED ON 93% TO INTERIOR OF PERIMETER WALLS)	N/A	49,273.7 m <sup>2</sup> (530,000 ft <sup>2</sup> )
LANDSCAPE	15%	41.0% (22,798 m <sup>2</sup> / 245,303 ft <sup>2</sup> )
PARKING (BASED ON LEASEABLE FLOOR AREA)	3.6 SPACES / 100 m <sup>2</sup> = 334 SPACES	4.36 SPACES / 100 m <sup>2</sup> = 400 SPACES (INCLUDES 15 H.C. SPACES)
BICYCLE PARKING (BASED ON GROSS FLOOR AREA)	1 SPACE / 500 m <sup>2</sup> = 20 SPACES	1.5 SPACES / 500 m <sup>2</sup> = 30 SPACES
PARKING STALL SIZE	2.74 m x 5.8 m (9'-0" x 19'-0")	
MANEUVERING AISLE	6.7 m (22'-0")	
TRAFFIC AISLE	7.6 m (25'-0")	



**SURFACE LEGEND**

CONCRETE WALKWAY	
RIPPLE STRIP	
PAINTED LINES ON PAVEMENT	
PAVED SHOULDER	



**architectural design associates inc. architect**

1880 assumption street, suite 100  
 windsor ontario canada n8y 1c4  
 ph 519.254.3430 fax 519.254.3642  
 email - info@ada-architect.ca www.ada-architect.ca

stamp:

date (mm/dd/yy):	issued for:
02/11/14	SITE PLAN CONTROL SUBMISSION
12/06/13	REVISED SITE PLAN
09/16/13	REVISED SITE PLAN
09/10/13	REVISED SITE PLAN
08/27/13	REVISED SITE PLAN
07/31/13	REVISED SITE PLAN CRU9,11,13 SPACES
07/18/13	REVISED SITE PLAN CRU1-CRU12 SPACES
06/13/13	REVISED SITE PLAN FOR TRUCK ACCESS

**general notes:**

- THIS PRINT IS AN INSTRUMENT OF SERVICE ONLY AND IS THE PROPERTY OF THE ARCHITECT.
- DRAWINGS SHALL NOT BE SCALED.
- CONTRACTORS SHALL VERIFY AND BE RESPONSIBLE FOR ALL DIMENSIONS AND CONDITIONS ON THE JOB AND THIS OFFICE MUST BE NOTIFIED OF ANY VARIATIONS FROM THE DRAWINGS.
- ATTENTION IS DIRECTED TO PROVISIONS IN THE GENERAL CONDITIONS REGARDING CONTRACTOR'S RESPONSIBILITIES IN REGARD TO SUBMISSION OF SHOP DRAWINGS.
- IN THE EVENT THE ARCHITECT IS REQUIRED TO REVIEW SHOP DRAWINGS, SUCH REVIEW IS ONLY TO CHECK FOR CONFORMANCE WITH DESIGN CONCEPT AND WITH THE INFORMATION GIVEN IN THE CONTRACT DOCUMENTS.
- CONTRACTORS SHALL PROMPTLY NOTIFY THE ARCHITECT IN WRITING OF THE EXISTENCE OF ANY OBSERVED VARIATIONS BETWEEN THE CONTRACT DOCUMENTS AND ANY APPLICABLE CODES OR BY-LAWS.
- THE ARCHITECT IS NOT RESPONSIBLE FOR THE CONTRACTOR'S MEANS, METHODS AND OR TECHNIQUES IN THE CONSTRUCTION OF THIS FACILITY.

**project:** COMMERCIAL DEVELOPMENT, MITCH OWENS RD. & BANK ST., GREELY (OTTAWA), ONT.

**client:** OTIS GROUP OF COMPANIES

**drawing title:** SITE PLAN

**scale:** AS SHOWN

**drawn by:** TC

**checked by:** SMB / TC

**date:** FEB. 2014

**comm. no.:** 2010-060

sheet no.: **A1.1**