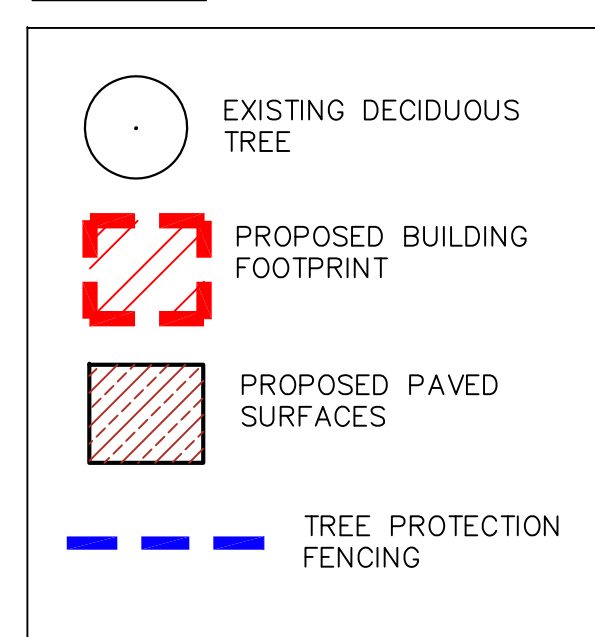


LEGEND:



SITE DESCRIPTION:

THE SITE IS OF MODERATE-TO-LOW VALUE ENVIRONMENTALLY. THE MAJORITY OF THE SITE HAS BEEN CLEARED OF VEGETATION FOR ITS FORMER USE AS A GRAVEL QUARRY. THE MAJORITY OF THE VEGETATION ON THE SITE IS ALONG THE SOUTH BORDER OF THE PROPERTY, ADJACENT TO A RESIDENTIAL AREA. THIS VEGETATED AREA IS GROWING ALONG A VERY STEEP SLOPE, AND IS LIKELY A FACTOR IN STABILIZING THE SURFACE SOILS OF THE SLOPE.

THE MAJORITY OF THE TREES ON THE SITE ARE ROBINIA PSEUDOACACIA, BLACK LOCUST, IDENTIFIED AS AN INVASIVE SPECIES BY THE CITY OF OTTAWA.

THERE IS SURFACE WATER IDENTIFIED ON THE SITE ON GEOTTAWA, BUT NONE WAS IN EVIDENCE IN MAY OF 2014 WHEN THE INSPECTION FOR THIS REPORT TOOK PLACE.

NOTES:

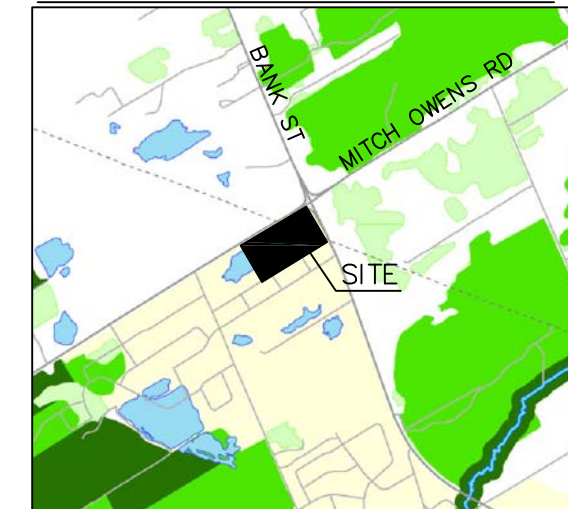
THE PROPOSED LOSS OF VEGETATION FOR THIS PHASE OF DEVELOPMENT WILL BE AS FOLLOWS:
 - APPROXIMATELY 92 TREES OVER 10CM DBH WITH APPROXIMATELY 3000 SQ M. OF SHRUBBY VEGETATED AREAS AND IMMATURE TREES. THE MAJORITY OF THESE WILL BE REMOVED FOR THE INSTALLATION OF A RETAINING WALL TO STABILIZE THE SLOPES TO THE SOUTH OF THE SITE - SEE ENGINEERING DRAWINGS AND REPORTS.

THERE WILL BE AN INCREASE OF 9300 M2 IN AREA OF THE SITE TO BE OCCUPIED BY BUILDING FOOTPRINT. THERE WILL BE AN INCREASE OF 22,000 M2 IN AREA OF THE SITE TO BE PAVED WITH IMPERVIOUS SURFACES.

THE MAJORITY OF THE TREES TO BE REMOVED ARE OF LIMITED VALUE DUE TO SPECIES AND CONDITION. THE GREATEST CHANGE TO THE SITE WILL BE WITH REGARD TO THE CHANGE IN PERMEABLE SURFACES, WHICH WILL BE FAIRLY SIGNIFICANTLY DECREASED.

PLEASE REFER TO THE LANDSCAPE PLAN FOR NEW PLANTINGS.

GREENSPACE LINKAGES:



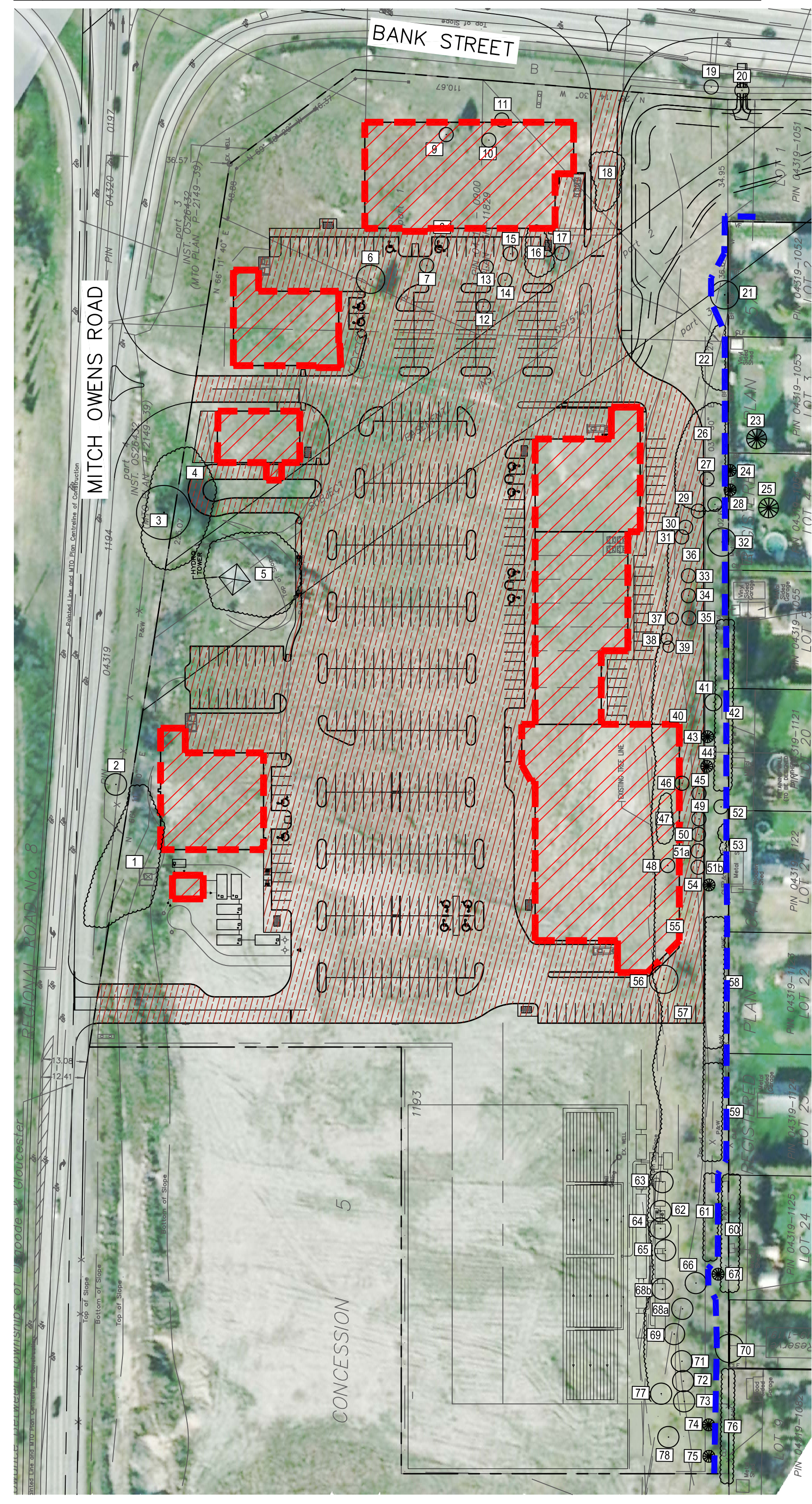
FROM: Ottawa Greenspace Master Plan, Map 1
 ■ PRIMARY AREAS
 ■ SUPPORTING AREAS
 ■ CONTRIBUTING AREAS

COMMENTS:
 THE SITE IS NOT IDENTIFIED AS SIGNIFICANT IN THE OTTAWA GREENSPACE MASTER PLAN. IT IS VERY CLOSE TO AREAS OF SIGNIFICANCE, HOWEVER IS UNLIKELY TO CONTRIBUTE TO THESE AREAS IN ITS CURRENT CONDITION.

TR EE #	BOTANICAL NAME	COMMON NAME	CALIPER	CONDITION	TO BE PRESERVED	COMMENTS
1	Rhus typhina, Ulmus pumila, various shrubs	Sumac, slippery elm, various shrubs	all <10cm	MODERATE	NO	A grouping of immature trees, sumac and woody plant material.
2	Ulmus pumila	Slippery Elm	31.5	MODERATE-POOR	NO	The tree is poorly formed, with many suckering branches. The tree has damage, and approximately 10% of the crown is composed of dead branches.
3	Acer negundo	Manitoba Maple	Multi-stem (6) Each Approx. 35-45	POOR	NO	The tree is very large and mature, and each stem has failed to some extent, some lying prostrate. Approximately 20% of the crown is dead. There are several injuries and cavities throughout the stems.
4	Rhus typhina (many)	Staghorn Sumac (many)	All <10	GOOD	NO	This area is colonized by sumac. They are for the most part in good condition, particularly those further away from tree #3.
5	Populus sp, Acer negundo, various shrubs	Poplars, Manitoba Maple and various shrubs	All <10	GOOD	NO	This is a group of healthy open-grown saplings and shrubs.
6	Salix sp.	Willow	MS (10) Approx. 20 each	POOR	NO	The tree is dense with many stems growing in very close proximity. The tree is in poor condition, with approximately 30% of the crown dead and some hangers present.
7	Populus tremuloides	Trembling Aspen	13.7	GOOD	NO	The tree is healthy, and typically formed for an open-grown volunteer.
8	Populus tremuloides	Trembling Aspen	12.4	GOOD	NO	The tree is healthy, and typically formed for an open-grown volunteer.
9	Populus tremuloides	Trembling Aspen	17.9	GOOD	NO	The tree is healthy, and typically formed for an open-grown volunteer.
10	Ulmus pumila	Siberian Elm	12.3	GOOD	NO	The tree is healthy, and typically formed for an open-grown volunteer.
11	Populus tremuloides	Trembling Aspen	19.1	GOOD	NO	The tree is healthy, and typically formed for an open-grown volunteer.
12	Robinia pseudoacacia	Black Locust	MS (3) 11.5-14.8	GOOD	NO	The tree is healthy, and typically formed for an open-grown volunteer.
13	Populus tremuloides	Trembling Aspen	14.6	GOOD	NO	The tree is healthy, and typically formed for an open-grown volunteer.
14	Populus tremuloides	Trembling Aspen	14.2	GOOD	NO	The tree is healthy, and typically formed for an open-grown volunteer.
15	Robinia pseudoacacia	Black Locust	14.3	GOOD	NO	The tree is healthy, and typically formed for an open-grown volunteer.
16	Populus tremuloides (11)	Trembling Aspen (11)	11.2-16.0	GOOD	NO	This is a group of Aspen, all growing in fairly close proximity. They are all moderately well-formed and appear healthy.
17	Populus tremuloides	Trembling Aspen	14.3	GOOD	NO	The tree is healthy, and typically formed for an open-grown volunteer.
18	Populus tremuloides and Robinia pseudoacacia (several)	Trembling Aspen and Black locust (several)	All <10	MODERATE	NO	The trees are all immature, and growing in close proximity to each other, with shrubby undergrowth throughout.
19	Fraxinus pennsylvanica	Green Ash	10.9	MODERATE	NO	The tree is moderately well formed and appears healthy, though has some moderate salt damage.
20	Acer platanoides	Norway Maple	19.4	MODERATE	NO	The tree is moderately well formed and appears healthy, though has some moderate salt damage.
21	Acer negundo	Manitoba Maple	MS (2) Approx. 30-35	MODERATE-POOR	YES	The tree is poorly formed, with a poor union between stems, despite ample reaction wood. There are multiple dead branches and some hangers.
22	Rhus typhina & Robinia pseudoacacia	Staghorn Sumac and Black Locust	All <10	GOOD	NO	This area is colonized with Sumac and there are several small Black Locusts also growing in the area.
23	Pinus strobus	White Pine	Approx. 30	MODERATE	YES	This tree is on private property. This white pine is healthy, though the double leader may be a structural flaw.
24	Picea glauca	White Spruce	Approx. 25	GOOD	YES	The tree is very the property line. The tree is dense and healthy, but leaning slightly.
25	Picea glauca	White Spruce	Approx. 25	GOOD	YES	The tree is very the property line. The tree is dense and healthy.
26	Robinia pseudoacacia (80%) & Populus tremuloides (20%)	Black Locust and Trembling Aspen	1 - 11.8 dbh, rest <10	GOOD	NO	This area is colonized by Black locust and Trembling Aspen. The trees are spaced on average approximately 1-2m O.C. They are generally in good health, and frequently multi-stemmed.
27	Robinia pseudoacacia	Black Locust	38.4	MODERATE	NO	The tree was formerly multi-stemmed with the other stem having died and been removed. The remaining stem appears healthy, but has a moderate injury on the trunk. There are multiple dead branches in the crown, and multiple dead branches littered throughout the area.
28	Populus nigra 'Italica'	Lombardy Poplar	32.6	MODERATE-POOR	NO	Planted on the property line, the tree is in moderate to poor condition, with multiple dead branches and many dead branches littered throughout the area.
29	(3) Robinia pseudoacacia	3 Black Locusts	15.0, 12.1 & 15.9	MODERATE	NO	The trees appear healthy and are moderately formed.
30	(3) Robinia pseudoacacia	3 Black Locusts	1 dead, 12.4 & 12.5	MODERATE	NO	The trees appear healthy and are moderately formed.
31	Robinia pseudoacacia	Black Locust	20.0	MODERATE-POOR	NO	The tree was formerly multi-stemmed with the other stem having died and been removed. The remaining stem appears healthy, but has a moderate injury on the trunk. There are multiple dead branches in the crown, and multiple dead branches littered throughout the area.
32	1 - Acer negundo, 5 Robinia pseudoacacia	1 Manitoba Maple, 5 Black Locusts	AN - 12.4, RP - 8 to 15.6	MODERATE	NO	The trees are all growing very closely together, and appear healthy, though are not particularly well-formed.
33	Robinia pseudoacacia	Black Locust	34.6	MODERATE-POOR	NO	The area around the tree is has been cleared and maintained by the neighbouring homeowner. The tree is somewhat poorly formed, with minor included bark at the union of the stems. The tree has approximately 10% dead wood in the crown, and there are sunken patches on the trunk.
34	Robinia pseudoacacia	Black Locust	MS (3) 18.9 to 33.8	MODERATE-POOR	NO	The area around the tree is has been cleared and maintained by the neighbouring homeowner. The tree is poorly formed, with severely included bark at the union of the stems. The tree has approximately 10% dead wood in the crown, and there are sunken patches on the trunk.
35	Robinia pseudoacacia	Black Locust	MS (3) Approx. 20-35	MODERATE-POOR	NO	This area is populated with dense, shrubby undergrowth and immature Black locusts, generally in poor condition. The tree have dead limbs and are poorly formed, and many are grown-over with vines.
36	Robinia pseudoacacia (immature), and undergrowth	Black Locust and undergrowth	All <10	MODERATE-POOR	NO	The tree is poorly formed but appears healthy.
37	Robinia pseudoacacia	Black Locust	MS (3) 18.9 - 25.8	MODERATE	NO	The tree is poorly formed but appears healthy.
38	Robinia pseudoacacia	Black Locust	Approx 20	MODERATE	NO	The tree is poorly formed but appears healthy.
39	Acer negundo	Manitoba Maple	MS (2) 23.0 - 23.2	MODERATE	NO	The tree is moderately formed, with a healthy union between the stems. The tree appears healthy.
40	Robinia pseudoacacia, Acer negundo and undergrowth	Black Locust, Manitoba Maple and undergrowth.	All <10	MODERATE-POOR	NO	This area is populated with dense, shrubby undergrowth and immature Black Locusts and Manitoba Maples, generally in poor condition. The tree have dead limbs and are poorly formed, and many are grown-over with vines.
41	Acer negundo	Manitoba Maple	13.4	GOOD	NO	The tree is growing near the cedar hedge, and is healthy and well-formed.
42	Thuja occidentalis	Cedar Hedge	2m HT	GOOD	NO	The hedge is dense and well-established. There are several Manitoba Maples growing up from within the hedge. The hedge is straddling the property line.
43	Pinus strobus	White Pine	16.4	POOR	NO	The tree is contorted and poorly formed, with sparse foliage.
44	Pinus strobus	White Pine	17.7	POOR	NO	The tree is contorted and poorly formed, with sparse foliage.

45	Acer negundo	Manitoba Maple	Approx. 50	POOR	NO	The tree is very large, and has several large dead and broken branches and hangers. There are multiple suckers and there are dense shrubs growing around the tree.
46	Robinia pseudoacacia	Black Locust	Approx 25	MODERATE	NO	The tree is somewhat poorly formed, with several secondary branches growing up the length of the trunk, some of which are poorly attached. The tree appears healthy.
47	1 - Robinia pseudoacacia, 1 - Acer negundo and 1 - Ulmus sp.	1 - Black Locust, 1 - Manitoba Maple and 1 - Elm	RP - Approx. 30, AN - Approx. 20, Elm - MS (2) Approx. 40 & 40	MODERATE	NO	The trees are growing on a very steep slope and are generally poorly formed. The Black Locust and Maple have several broken branches and the multiple stems of the Elm have severely included bark. The trees are generally healthy.
48	Acer negundo	Manitoba Maple	MS (2) Approx. 30 and 35	MODERATE	NO	The tree has dominant stems which are poorly attached at the base. The tree is growing on a very steep slope and appears healthy.
49	Robinia pseudoacacia	Black Locust	MS (3) Approx. 20-25	MODERATE	NO	The tree is poorly formed, with the three stems growing very closely together, with severely included bark. There are several dead branches, but the tree appears otherwise healthy.
50	Robinia pseudoacacia	Black Locust	28.4	MODERATE	NO	The tree is relatively well-formed, but there is a large cavity in the trunk at approximately 1m above grade.
51a	Robinia pseudoacacia	Black Locust	MS (2) 36.4 & 20.7	MODERATE	NO	The tree is somewhat poorly formed, with several secondary branches growing up the length of the trunk, some of which are poorly attached. The smaller of the two stems is leaning moderately. There is some evidence of decay (discolouration) at the union of the two stems.
51b	Robinia pseudoacacia	Black Locust	MS (2) 28.6 & 21.0	MODERATE	NO	The tree is somewhat poorly formed, with severely included bark between the two stems. The smaller of the two stems is leaning moderately. The tree appears healthy.
52	Robinia pseudoacacia	Black Locust	MS (2) Approx. MS & 25	POOR	NO	The tree is growing from the property line, and is surrounded by dense, thorny underbrush. Both stems of the tree are leaning severely with no correction for the lean in the growth of the tree.
53	3 Acer negundo	3 Manitoba Maples	1 - Approx 25.2 - MS (3) Approx 15-20	MODERATE	NO	Located on the property line, these trees are growing up very close to the existing shed. The first and third are in relatively good condition, though the second has a major decay in the trunk, signs of advanced decay. Furniture, logs and debris have been piled up against the trees and around the building.
54	Pinus strobus	White Pine	13.4	MODERATE	NO	The tree's foliage is quite sparse, likely from insufficient light and from competition. The leader is dead, but another appears to be forming.
55	Robinia pseudoacacia (many)	Black Locust (many)	Generally <10, 6 - approx 15-20	MODERATE	NO	This area is colonized with Black Locust, the majority of which are immature and less than 10cm dbh. There are 6 trees which are approximately 15-20cm dbh, which are all growing on very steep slopes and have a good deal of brush (old and freshly cut) piled against their trunks. None of the trees are well formed, generally poorly branched from proximity and competition, though they all appear somewhat healthy.
56	Ulmus sp.	Elm	Approx. 30	MODERATE	NO	The tree is located on a very steep slope, with brush, trash, car parts and large rusted metal poles piled around it. The tree appears relatively healthy, and well-formed.
57	Robinia pseudoacacia, Ulmus sp, Acer negundo, (many)	Black Locust, Elm and Manitoba Maple	<10 to Approx. 20	MODERATE-POOR	NO	This area is largely bare of trees, due to the extremely steep slope, however there are occasional trees, with 4 Elm, 2 Manitoba Maple and 1 Black locust all between 10 and 20 cm dbh. The area is overgrown with tangled shrubs and vines, piled with brush and trash and is quite difficult to navigate.
58	16 Robinia pseudoacacia	16 Black Locust	25-40	MODERATE	NO	Here there is an even row of Black Locusts planted in this location, the trees are large and mature, and all have some degree of dead wood or deterioration. There are 3 trees which are in good condition and well-formed. There are 3 trees in poor condition, all of which are multi-stemmed (with 7 stems) and which have significant dead branches and signs of decay. The remainder are in fair condition, with 10-20% of dead branches in the canopy, and moderate to well-formed. There is a gap where between 2 and 3 other trees were likely formerly planted, with one highly decayed stump remaining. There are several immature Black locusts and Manitoba Maples growing up nearby, although in some areas, neighbouring property owners have kept the areas around the trees clear of brush.
59	Robinia pseudoacacia, Ulmus sp, Acer negundo, (many)	Black Locust, Elm and Manitoba Maple	<10 to Approx. 20	MODERATE-POOR	NO	This area is even more densely overgrown with shrubs and scattered with brush and trash. There are many immature trees densely covering the area (approx. 1m OC), with 4 Manitoba Maples at approximately 20cm dbh, 2 Elms at approximately 15cm dbh, and 1 Black Locust at approximately 20cm dbh. The trees are poorly formed due to competition and proximity, but appear moderately healthy. There are several dead trees in the thicket, one of which is covered with fungal conks which appear to be Cerrena unicolor.
60	Thuja occidentalis	Cedar Hedge	2.5m HT	GOOD	YES	The hedge is dense and well-established. There are several Manitoba Maples growing up from within the hedge. The hedge is straddling the property line.
61	6 Robinia pseudoacacia	6 Black Locusts	15-25	MODERATE-POOR	NO	This appears to be a continuation of the trees described in # 58, however the trees are smaller and in poorer condition due to competition as the area has not been cleared and maintained as in the other location. The trees are all Multi-stemmed, and several show signs of decay.
62	Robinia pseudoacacia, Ulmus sp, Acer negundo, (many)	Black Locust, Elm and Manitoba Maple	<10	MODERATE-POOR	NO	This area is very densely overgrown with shrubs and scattered with brush and trash. There are several immature trees throughout the area as well as shrubs including Honeysuckle (Lonicera). There are 11 trees between 15 and 20cm dbh, including 6 Manitoba Maple, 4 Black locust and 1 Elm. The trees are poorly formed due to competition and proximity, but appear moderately healthy.
63	Acer negundo	Manitoba Maple	MS (2) Approx 15 & 30	MODERATE-POOR	NO	The tree is poorly formed with several dead branches, but appears fairly healthy. The area has a good deal of brush and immature trees growing nearby, including Manitoba Maple, Willow and woody shrubs.
64	2 Acer negundo	2 Manitoba Maples	1 - MS (2) Approx 15 & 25, 2 - Approx. 30	MODERATE-POOR	NO	The trees are poorly formed with several dead branches, but appear fairly healthy. The area has a good deal of brush and immature trees growing nearby, including Manitoba Maple, Willow and woody shrubs.
65	Acer negundo	Manitoba Maple	MS (2) Approx 20 & 25	MODERATE-POOR	NO	The tree is poorly formed with several dead branches, but appears fairly healthy. The area has a good deal of brush and immature trees growing nearby, including Manitoba Maple, Willow and woody shrubs.
66	Robinia pseudoacacia	Black Locust	MS (3) 14.4 - 17.3	MODERATE	NO	The tree is poorly formed, with poor unions at the stems. It appears otherwise healthy.
67	Pinus strobus	White Pine	28.7	MODERATE-POOR	YES	The tree is poorly formed, the leader clearly having died at some point and a new one developing. The foliage is healthier than other pines in the area, but still sparse.
68a	Robinia pseudoacacia	Black Locust	25.8	POOR	NO	The tree is fairly well-formed, however there is a large cavity on the south side, near grade, approx. 50cm tall. The tree appears otherwise healthy.
68b	Robinia pseudoacacia	Black Locust	Approx. 20	MODERATE-POOR	NO	The tree is growing on a very steep slope, and is relatively well-formed and appears healthy. There are several immature trees growing nearby as well as dense shrub growth.
69	Acer negundo	Manitoba Maple	MS (2) Approx. 30 & 40	POOR	NO	The tree is fairly poorly formed, with one stem fairly straight but the other (to the north) leaning out over the bank. The lower stem is densely branched with a large secondary branch leaning out still further over the bank, but appears healthy. The northern stem is in very poor condition, beginning to fall with several major secondary branches breaking off, and a large cavity with advanced decay open on the trunk.
70	Acer negundo	Manitoba Maple	Approx 60-70	MODERATE-POOR	YES	The tree is on private property and is being maintained by the property owners dead branches and suckers pruned. It is somewhat poorly formed but appears healthy.

71	Acer negundo	Manitoba Maple	Approx 35	MODERATE-POOR	NO	The tree is fairly well formed, although it once had a secondary stem, which has died. It is densely branched from the base, and appears healthy.
72	Acer negundo	Manitoba Maple	MS (2) Approx 25 & 40	MODERATE	NO	The tree is somewhat well-formed, with ample reaction wood at the union of the two stems, though the tree is suckering severely. The tree appears healthy.
73	Acer negundo	Manitoba Maple	MS (2) Approx 20 & 25	MODERATE-POOR	NO	Both stems of the tree are leaning, one moderately and the larger one severely. There is some correction in the tree's growth, however not sufficiently to correct for the degree of the lean. The tree appears healthy.
74	Pinus strobus	White pine	28.5	MODERATE-POOR	NO	The tree is well-formed, however most of the branches on the east side are stunted, missing or dead. There is no obvious cause for this. The foliage on the rest of the tree appears healthy.
75	Pinus strobus	White pine	28.9	GOOD	NO	The tree is healthy and well-formed.
76	Thuja occidentalis & Acer rubrum	Cedar Hedge with Red Maple	2.5m HT	GOOD	YES	The hedge is dense and well-established. There is one large Red Maple growing in or very near the hedge on the property to the south. It appears to be in good condition.
77	Acer negundo	Manitoba Maple	MS (3) Approx 30 & 40	MODERATE	NO	The tree is somewhat poorly formed, with three dominant stems diverging at approximately 1.2m above grade. The tree appears healthy, and is growing on a steep slope.
78	Robinia pseudoacacia	Black Locust	Approx. 30	MODERATE	NO	The tree is somewhat poorly formed, and is growing on a very steep slope, but appears otherwise healthy.



ADDITIONAL INFORMATION:

- 1) OWNER: OTIS GROUP OF COMPANIES 3338 DUFFERIN STREET TORONTO, ON M6A 3A4
- 2) APPLICANT: FOTENN CONSULTANTS 223 MCLEOD STREET OTTAWA, ON K2P 0Z8 613-730-5709
- 3) AUTHOR: LISA MACDONALD, BLA, OALA CERTIFIED ARBORIST (ON-1513A) FOTENN CONSULTANTS 223 MCLEOD STREET OTTAWA, ON K2P 0Z8 613-730-5709 X 240
- REVISION No. 1. & 2. PREPARED BY: JEFFERY GOETTLING, BLA, OALA, CSLA CERTIFIED ARBORIST (ON-1717A) CSW LANDSCAPE ARCHITECTS LTD. 1960 SCOTT STREET, SUITE 200, OTTAWA, ON K1Z 8L8 613-729-4536 X 240
- 4) MUNICIPAL ADDRESS OF THE SITE: 7107 MARCO STREET, 5640 BANK STREET, 7041 MITCH OWENS ROAD
- 5) OFFICIAL PLAN & ZONING DESIGNATION CURRENT ZONES OF SITE: RC[753]

REVISION No. 1. & 2. UPDATE(S) PREPARED BY CSW LANDSCAPE ARCHITECTS INCLUDES:
 1. PROPOSED BUILDING DELINEATIONS;
 2. PAVED SURFACE DELINEATIONS;
 3. CIVIL INFRASTRUCTURE IMPROVEMENTS.

NO FURTHER ONSITE INVESTIGATION OCCURRED. ORIGINAL TCR WAS CREATED BY FOTENN CONSULTANTS IN MAY OF 2014.

CSW Landscape Architecture
 Urban Design
 Site Planning
 Recreation and Park Planning
 Project Management

1960 Scott Street, Suite 200, Ottawa, Ontario K1Z 8L8
 Tel: (613) 729-4536 Fax: (613) 729-3018

3.	RE-SUBMITTED FOR SPA	2015-10-27
2.	RE-SUBMITTED FOR SPA	2015-01-30
1.	SUBMITTED FOR SPA	2014-05-12

NO. ISSUE & REVISIONS: DATE:

- 1. The General Contractor shall verify all conditions in the field and report any discrepancies to the Landscape Architect prior to construction.
- 2. Any areas outside the limit of work damaged by the General Contractor shall be restored by the General Contractor to the satisfaction of the contract administrator at no additional cost to the Owner.
- 3. All underground utilities to be located by the General Contractor prior to the commencement of any work.
- 4. This drawing is a portion of a complete project and shall be read in conjunction with all other drawings, specifications and tender documents related to the project, regardless of origin.
- 5. All measurements in millimeters unless otherwise noted.
- 6. Do not scale drawing.
- 7. This Drawing may not be used for construction until signed by the Landscape Architect.

SEAL: PROJECT NORTH:

FOTENN

PROJECT:
 GREELY COMMERCIAL CENTRE
 7107 MARCO ST, 5640 BANK ST, 7041 MITCH OWENS RD, OTTAWA, ON

DRAWING:
 TREE CONSERVATION REPORT

SCALE:	1:1000	DRAWING NO.	ARB-1
DRAWN:	LM/JG	CHECKED:	ML
DATE:	2013-10-27	REVISION NO.	2.