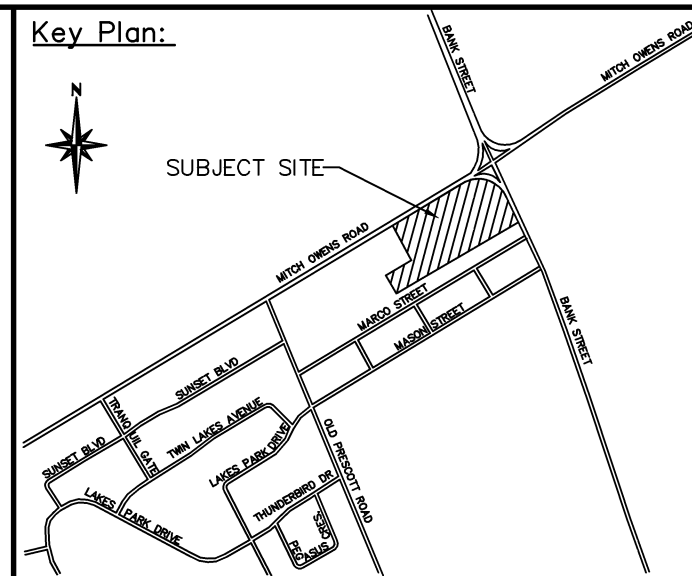
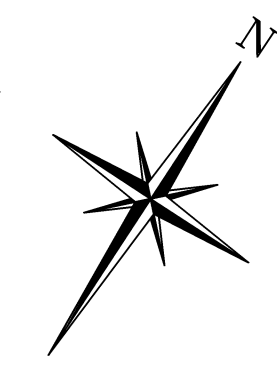
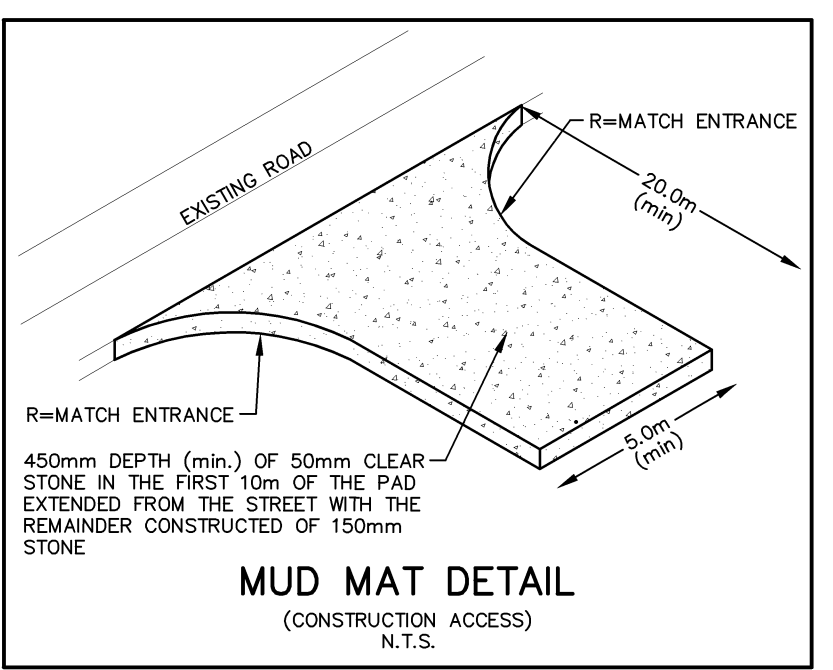
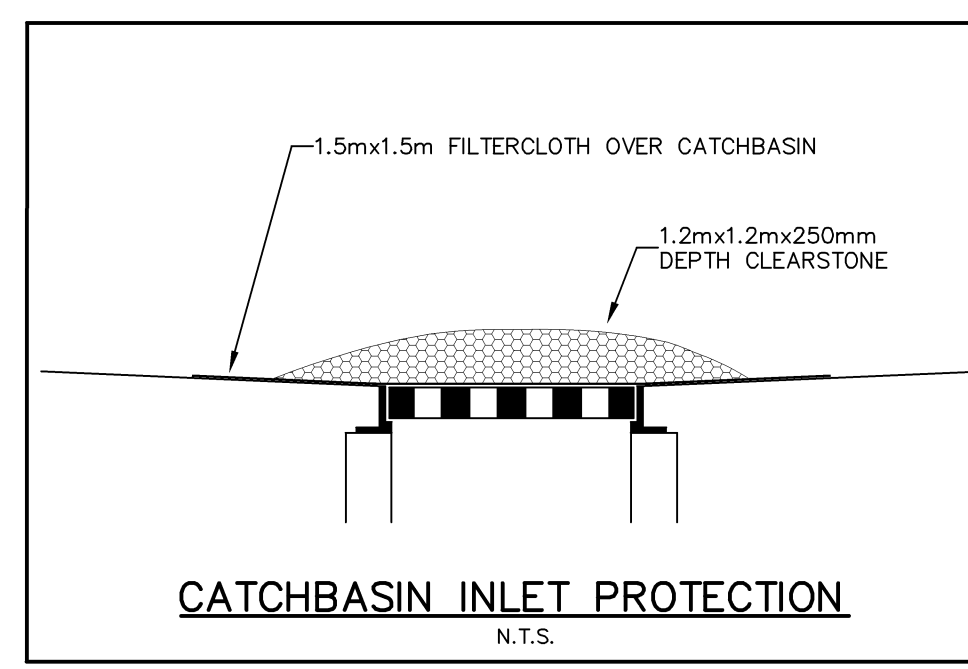


MITCH OWENS ROAD



CAUTION
CONTRACTOR TO DETERMINE
LOCATION OF EXISTING UTILITIES
PRIOR TO CONSTRUCTION.



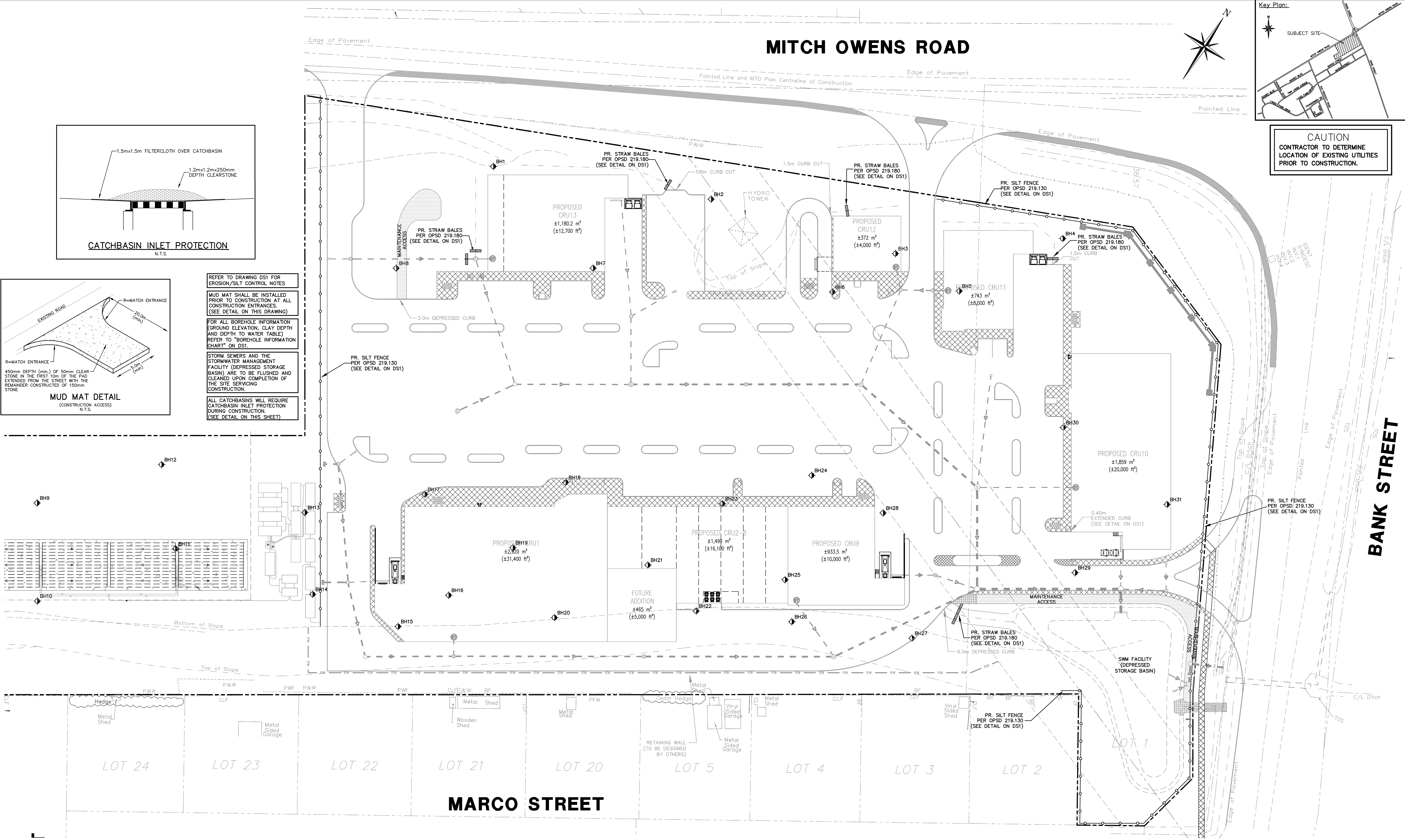
REFER TO DRAWING DSI FOR
EROSION/SILT CONTROL NOTES

MUD MAT SHALL BE INSTALLED
PRIOR TO CONSTRUCTION AT ALL
CONSTRUCTION ENTRANCES.
(SEE DETAIL ON THIS DRAWING)

FOR ALL BOREHOLE INFORMATION
(GROUND ELEVATION, CLAY DEPTH
AND DEPTH TO WATER TABLE)
REFER TO "BOREHOLE INFORMATION
CHART" ON DSI.

STORM SEWERS AND THE
STORMWATER MANAGEMENT
FACILITY (DEPRESSED STORAGE
BASIN) ARE TO BE FLUSHED AND
CLEANED UPON COMPLETION OF
THE SITE SERVICING
CONSTRUCTION.

ALL CATCHBASINS WILL REQUIRE
CATCHBASIN INLET PROTECTION
DURING CONSTRUCTION.
(SEE DETAIL ON THIS SHEET)



Notes:

- Unless noted otherwise, the measurements and distances shown on this drawing are shown in meters.
- Do not scale drawings.
- It is the contractor's responsibility to verify all dimensions, levels and datums on site and report any discrepancies or omissions to WMI & Associates Ltd. prior to construction.
- This drawing is to be read and understood in conjunction with all other relevant documents applicable to this project.
- This drawing is the exclusive property of WMI & Associates Ltd. and the reproduction of any part of this document without prior written consent is strictly prohibited.

Benchmark: 113.99

#3 CONCRETE MONUMENT (001196530377).
NORTH SIDE OF MITCH OWENS ROAD
APPROXIMATELY 250m WEST OF THE
INTERSECTION OF MITCH OWENS ROAD AND
BANK STREET.



No.	Issue / Revision	Date
1	1st Submission	Feb. 4, 2014
2	1st Submission (updated)	May 14, 2014

Greely Commercial Center
**SEDIMENT & EROSION
CONTROL PLAN**

Client:
Alium Investments Ltd.
3338 Dufferin Street
Toronto, Ontario
M6A 3A4

WMI & Associates Limited
119 Collier Street
Barrie, Ontario
L4M 1H5
Ph 705-797-2027
www.wmiengineering.ca

Drawn By: TG
Checked By: JWL
Scale: 1:500
Project No: 11-183
Drawing No: SED