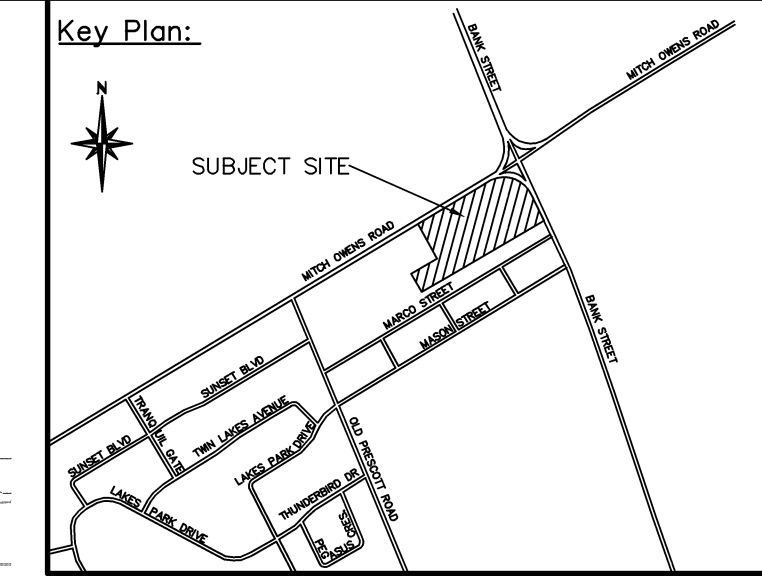
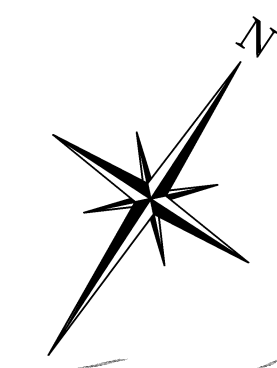


NOTE:  
ALL PROPOSED RESTAURANT TYPE USES REQUIRE OIL/GREASE INTERCEPTORS.

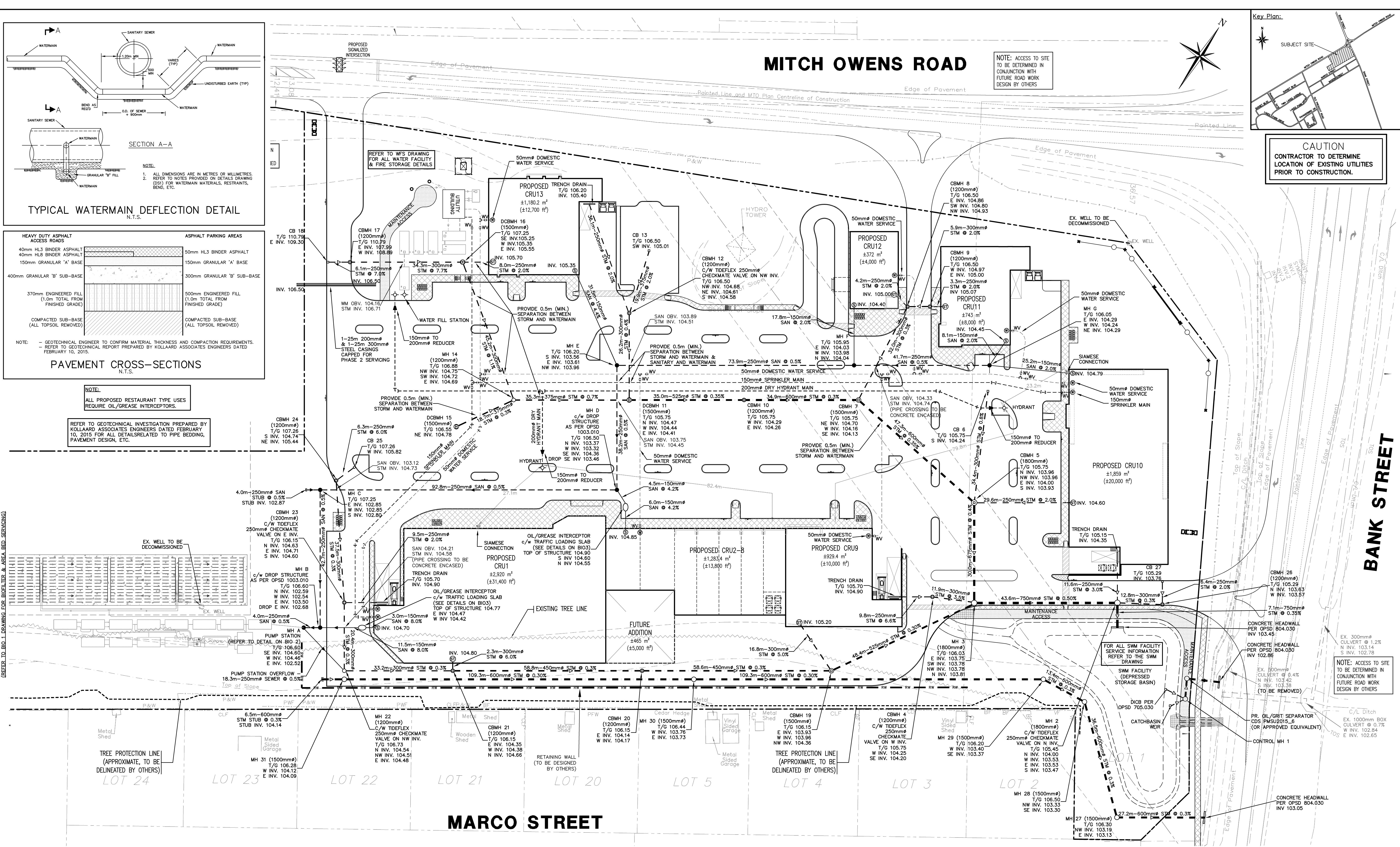
REFER TO GEOTECHNICAL INVESTIGATION PREPARED BY KOLLAARD ASSOCIATES ENGINEERS DATED FEBRUARY 10, 2015 FOR ALL DETAILS RELATED TO PIPE BEDDING, PAVEMENT DESIGN, ETC.

# MITCH OWENS ROAD

NOTE: ACCESS TO SITE TO BE DETERMINED IN CONJUNCTION WITH FUTURE ROAD WORK DESIGN BY OTHERS



**CAUTION**  
CONTRACTOR TO DETERMINE LOCATION OF EXISTING UTILITIES PRIOR TO CONSTRUCTION.



**Notes:**

- Unless noted otherwise, the measurements and distances shown on this drawing are shown in meters.
- Do not scale drawings.
- It is the contractor's responsibility to verify all dimensions, levels and datums on site and report any discrepancies or omissions to WMI & Associates Ltd. prior to construction.
- This drawing is to be read and understood in conjunction with all other relevant documents applicable to this project.
- This drawing is the exclusive property of WMI & Associates Ltd. and the reproduction of any part of this document without prior written consent is strictly prohibited.

**Benchmark:** 113.99

#3 CONCRETE MONUMENT (001196530377), NORTH SIDE OF MITCH OWENS ROAD APPROXIMATELY 250m WEST OF THE INTERSECTION OF MITCH OWENS ROAD AND BANK STREET.



No.	Issue / Revision	Date
1	1st Submission	Feb. 4, 2014
2	2nd Submission	May 22, 2015

**Client:** Alium Investments Ltd.  
3338 Dufferin Street  
Toronto, Ontario  
M6A 3A4

**Greely Commercial Center**  
**SITE SERVICING PLAN**

**wmi** WMI & Associates Limited  
119 Collier Street  
Barrie, Ontario  
L4M 1H5  
Ph 705-797-2027  
www.wmiengineering.ca

Drawn By: TG  
Checked By: JWL  
Scale: 1:500  
Project No: 11-183  
Drawing No: SS